

Microtek Scanner Installation Guide for ScanMaker V636



Basic Requirements

- IBM-PC 486, Pentium, or compatibles
- Microsoft Windows 95, NT or Windows 3.1x
- CD-ROM drive (internal or external)
- 16MB RAM depending on installed software components
- At least 800MB hard disk with 100MB available
- SuperVGA Color display with 256 colors or better

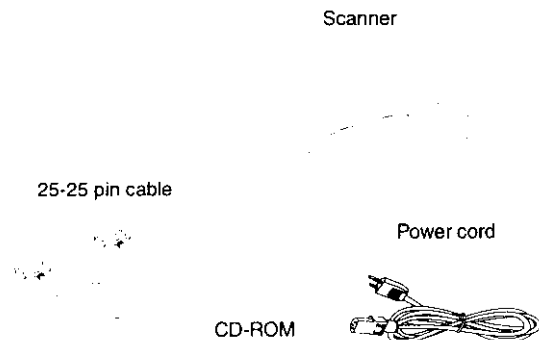
Important Note: Before using the scanner and software, you should read this Microtek Scanner Installation Guide first.

Installing under Windows 95

1. Unpack your scanner and check components

Open your scanner package and check the components as stated in your packing list. Do Not install any of the software until the hardware has been installed.

Before proceeding any further, check that you have all the following items:



Contents

Installing under Windows 95

Step 1 Unpack your scanner and check components	1
Step 2 Connect the scanner to your computer	2
Step 3 Install the scanner software	3
Step 4 Test your scanner	4
Installing under Windows 3.1x	5
Installing under Windows NT 4.0	6
Specifications	7

2. Connect the scanner to your computer

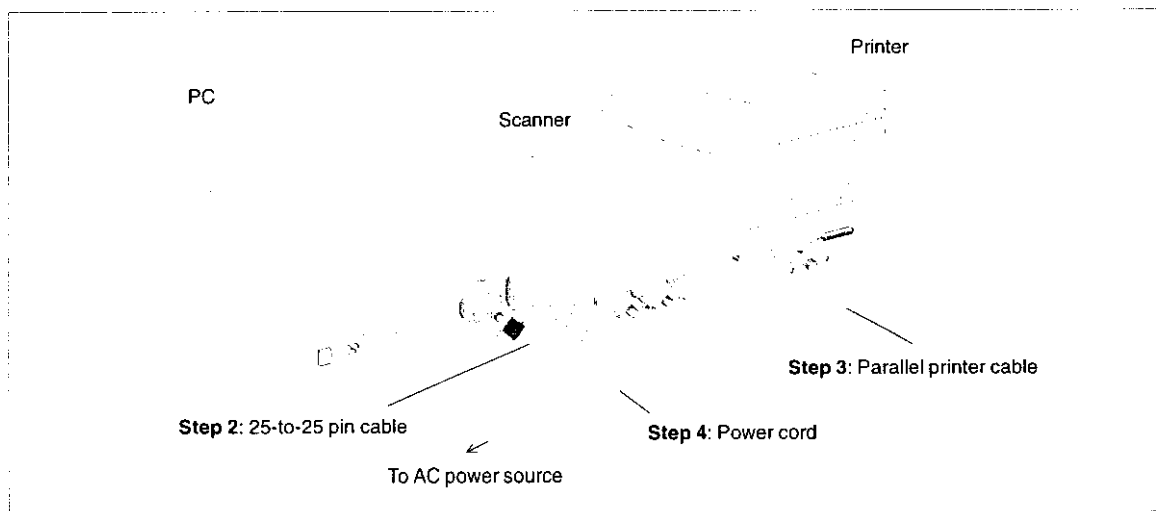
1. Turn off your computer and printer, and remove the parallel printer cable or any device (e.g. Keypro) from the computer's parallel port and connect it to the **Port A** of your scanner.
2. Connect the 25-to-25 pin cable at both the scanner's 25-pin **Port A** and your computer's parallel port.
3. Connect your original parallel printer cable to the scanner's 25-pin socket port (labeled **PRINTER**) and your printer jack.
4. Plug one end of the power cord to the power connector at the back panel of the scanner and the other end of the connector to your AC power source.
5. Power up your scanner. The Ready indicator (green light) on the front panel of the scanner flashes briefly. After a few seconds, the Ready indicator stops blinking and stays lit, the scanner is ready.
6. Turn on your computer, and check to make sure that your computer is configured as an EPP mode. Refer to the BIOS section of your PC's user manual.

Most computers allow you to quickly press the *Del* key several times while powering up. Then the screen displays 3 mode selections: ECP, EPP, and Standard. Choose EPP mode, then restart your computer to activate the settings you have made.

Technical Note: For fastest scanning, your parallel port should be set for EPP (Enhanced Parallel Port) mode. This is usually configured in your system BIOS. If you encounter communication problems using the EPP setting, try changing this to bi-directional or Compatible mode. Please see the documentation that came with your computer for more information about checking or changing BIOS settings.

7. When your computer is restarted, Windows 95 is launched as well.

Note: When running Windows 95, **Always** turn on the scanner before the computer. If you don't, Windows will not be able to "see" your scanner.



3. Install the Scanner software

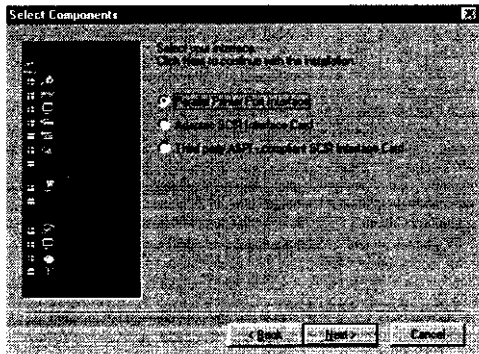
Insert the Microtek CD-ROM disc into your CD-ROM drive. The *Microtek Scanner Software* installer should come up automatically. Select the language you wish to use (not all software may be available in all languages), and the setup program will list the software available for you. Click on each software program in the order they appear on your screen to install all of the components.

*Note: If the Microtek Scanner Software is not automatically displayed on the screen, click **Start**, select **Run** and type `d:\cdsetup` (where `d:` is your CD-ROM drive).*

Before you begin installing software, make sure your scanner is connected to the computer with the included 25-to-25 pin cable, and that the scanner power is turned on.

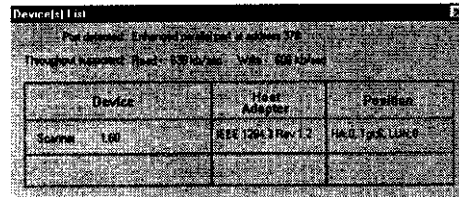
Step 1 Install Microtek ScanWizard

1. Click **Install Microtek ScanWizard**, then follow the instructions on the screen to start installation.
2. During installation, choose "**Parallel Printer Port Interface**" as your interface type.



3. If you have HP series printer driver in your system, click **Yes** to accept printer in daisy chain with the parallel printer port device.

4. Click **Yes** to check the peripheral environment related to your scanner. The result of the check is displayed, as shown below.



Make sure the **Tgt** option displays a SCSI ID number between 1 and 6, then continue.

5. Click **Yes** to let SwissKnife utility to detect if you want to.
6. When installation is complete, the **Microtek ScanWizard for Windows 95** group appears as a folder in the Programs menu.

*Note: The SwissKnife utility program checks the status of your scanner. To check your scanner at any time, simply press the **Start** button, and choose **SwissKnife** from the **Microtek ScanWizard for Windows 95** folder. SwissKnife supports Windows 95 and NT only, and is not compatible with Windows 3.1.*

Step 2 Install software applications

The bundled image editing, OCR, and other applications you receive depend on the scanner model you purchased. Click each option in the installer screen to install the software.

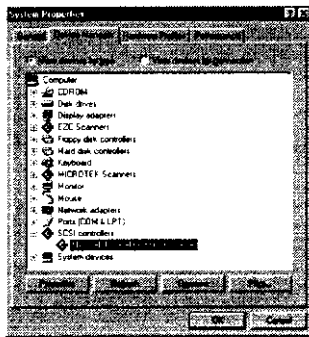
Note: When installing Caere OmniPage Limited Edition, select "Microtek ScanWizard" as your source.

Step 3 Install documentation reader

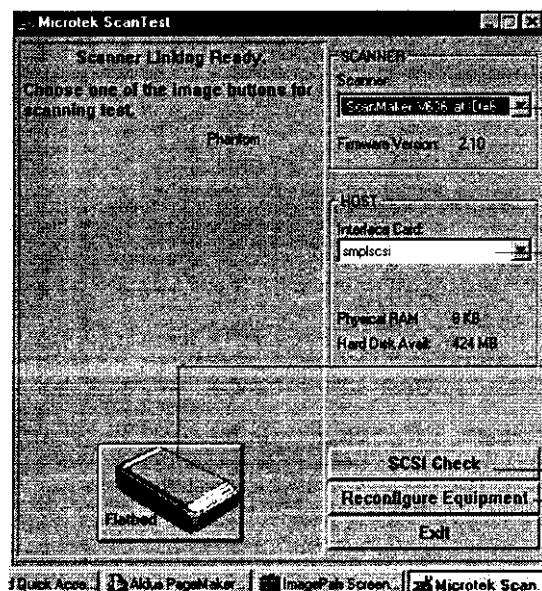
Click **Install Adobe Acrobat Reader**, then follow screen instructions until installation is completed. Acrobat Reader is necessary for reading the manuals on your CD-ROM.

4. Test your scanner

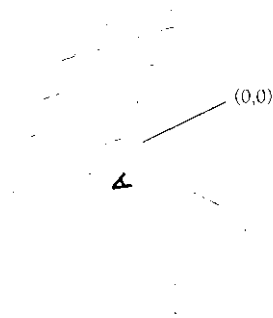
1. Restart Windows 95. Click Start, Settings, and select Control Panel.
2. Double-click on the System icon in Control Panel, then select Device Manager from the top.
3. Double-click on "SCSI controllers"; you should find "Microtek Parallel Port Host Adapter" listed.



4. Start up Scanner Test from Microtek ScanWizard for Windows 95 folder in Programs menu. When started up successfully, the screen appears.



5. Place your document face down on the scanner glass. The top left corner of the document should be at the "0,0" position on the ruler guides running along-side the scanner.



6. Click the Flatbed button on the Microtek ScanTest program screen. A grayscale preview of your image will be displayed in the Microtek ScanTest window. This indicates the Scanner Test was successful and that the scanner is now ready to be used.
7. Close and exit Microtek Scanner Test program.

The detected scanner and its SCSI ID number. (depending on the scanner model you have)

The "smplscsi" means you are using Scanner Interface EPP Cable interface.

Flatbed button.

The SCSI Check feature acts as a SCSI probe to verify the location of your scanner and the scanner ID.

The Reconfigure Equipment feature allows the system to update its own internal reference file and is useful when you have changed your setup or reconfigured your system.

Installing under Windows 3.1x

The instructions below pertain to installation of the software that came in your scanner under Windows 3.1x. Before doing this, however, you need to take the following steps:

1. Unpack your scanner and check components
2. Connect the scanner to your computer

Only when you have completed the above steps should you proceed with installing the software. See the previous sections of this document for instructions on performing the above.

Installing the scanner software

Before you begin installing software, make sure your scanner is connected to the computer with the included 25-to-25 pin cable and that the scanner power is turned on.

1. Insert the **Microtek CD-ROM** into your CD-ROM drive.
2. Launch Windows, then choose **File, Run** from Program Manager. Type *d:\cdsetup.exe* (where *d:* is the drive letter of your CD-ROM). The *Microtek Scanner Software* installer will come up. Select the language you wish to use (not all software is available in all languages), and the setup program will list the software available for you to install. Click on each software program in the order they appear on your screen to install all of the components.

Step 1 Install Microtek ScanWizard

1. Click **Install Microtek ScanWizard**, then follow screen instructions to start installation.
2. During installation, choose "**Parallel Printer Port Interface**" option as your interface type.

When installation is complete, the **Microtek ScanWizard for Windows** group is created and the CONFIG.SYS file is modified accordingly.

Step 2 Install software application

The bundled image editing, OCR, and other applications you receive depends on the scanner model you purchased. Click each option in the installer screen to install the software.

Step 3 Install documentation reader

Click **Install Adobe Acrobat Reader**, then follow screen instructions until installation is completed. Acrobat Reader is necessary for reading the manuals on your CD-ROM.

Test your scanner

Restart your computer, and start up **Scanner Test** from the **Microtek ScanWizard for Windows** group. The scanner test reports the detected scanner model and the interface, **smplscsi**. You can also test your scanner and any connections by running the *scsiutil.exe* program from the *c:\microtek* directory. Make sure you quit Windows before you do this.

Installing under Windows NT 4.0

The instructions below pertain to installation of the software that came in your scanner under Windows NT 4.0. Before doing this, however, you need to take the following steps:

1. Unpack your scanner and check components
2. Connect the scanner to your computer

Only when you have completed the above steps should you proceed with installing the software. See the previous sections of this document for instructions on performing the above.

Installing the scanner software

Before you begin installing software, make sure your scanner is connected to the computer with the included 25-to-25 pin cable and that the scanner power is turned on.

1. Launch Windows NT 4.0, log in as Administrator.
2. Insert the Microtek CD-ROM disc into your CD-ROM drive. The *Microtek Scanner Software* installer should come up automatically. Select the language you wish to use (not all software may be available in all languages), and the setup program will list the software available for you. Click on each software program in the order they appear on your screen to install all of the components.

Note: If the *Microtek Scanner Software Installer* is not automatically displayed on the screen, click **Start**, select **Run** and type `d:\cdsetup` (where *d*: is the drive letter of your CD-ROM).

Step 1 Install Microtek ScanWizard

1. Click Microtek **ScanWizard**, then follow screen instructions to start installation.

2. During installation, choose "**Parallel Printer Port Interface**" as your interface type.
3. Follow screen instructions to complete installation. When installation is complete, **Microtek ScanWizard for Windows NT** appears as a folder on the Programs menu.

Step 2 Install software applications

The bundled image editing, OCR, and other applications you receive depend on the scanner model you purchased. Click each option in the installer screen to install the software.

Step 3 Install documentation reader

Click **Install Adobe Acrobat Reader**, then follow screen instructions until installation is completed. Acrobat Reader is necessary for reading the manuals on your CD-ROM.

Test your scanner

Restart your computer, and start up **Scanner Test** from the **Microtek ScanWizard for Windows NT** in the programs menu. The Scanner Test reports the detected scanner model and the interface card, **smplscsi**. You can also run the **SwissKnife** utility from the Microtek ScanWizard group in order to test the scanner and cabling.

Specifications

Media:
Reflective color or black-and-white originals.

Image Sensor:
Linear array CCD with daylight fluorescent lamp.

Scanning Modes:
Single scanning pass; 36-bit color internal process (30-bit color external process); 12-bit grayscale internal process (10-bit grayscale external process); 1-bit black and white; 12 built-in halftones.

Scan Frame:
8.5" x 11.7"

Optical Resolution:
600 dpi horiz. x 1200 dpi vert.

Interpolated Resolution:
9600 dpi horiz. x 9600 dpi vert.

Scan Frame Selections:
From 1/8" to 13" in 2-pixel increments

Image Controls Brightness Settings:
From -100% to +100% in 1% increment.

Contrast Settings:
From -42% to +49% in 7% increments.

Exposure Time Selections:
From -18% to +747% in 3% increments.

Resolution Settings:
From 6 dpi to 600 dpi in 6-dpi increment;
600 dpi to 1200 dpi in 12-dpi increments;
1200 dpi to 2400 dpi in 24-dpi increments;
2400 dpi to 4800 dpi in 48-dpi increments;
4800 dpi to 9600 dpi in 96-dpi increments.

Scanning Speed:
In speed mode, 4.8 milliseconds per line for linear, gray, and color

Voltage:
AC 100V to 240V

Power Consumption:
AC 100V to 240V: 1A Max.;
47 to 63 Hz; 30 watts

Dimensions (L x W X H):
17.3" x 11.5" x 3.2"

Environment:
Operating temperature: 10° to 40°C (50° to 104°F)
Storage temperature: -10° to 60°C (14° to 140°F)
Relative humidity: 20% to 80%

Federal Communications Commission (FCC) Statement

This equipment has been tested and found to comply with the limits for a Class B digital device, pursuant to Part 15 of the FCC Rules. These limits are designed to provide reasonable protection against harmful interference in a residential installation. This equipment generates, uses and can radiate radio frequency energy and, if not installed and used in accordance with the instructions, may cause harmful interference to radio communications. However, there is no guarantee that interference will not occur in a particular installation. If this equipment does cause harmful interference to radio or television reception, which can be determined by turning the equipment off and on, the user is encouraged to try to correct the interference by one or more of the following measures:

- Reorient/relocate the receiving antenna.
- Increase the separation between the equipment and receiver.
- Connect the equipment into an outlet on a circuit different from that to which the receiver is connected.
- Consult the dealer or an experienced radio/TV technician for help.

Note: A shielded interface cable with ferrite cord installed on scanner connector end must be used with this equipment.

Trade Name
ScanMaker V636

Model Name
MRS-1200VX6P

CAUTION

Changes or modifications not expressly approved by the manufacturer responsible for compliance could void the user's authority to operate the equipment.