

Microtek Scanner Installation Guide for ScanMaker X6EL

Built-in
EPP

Basic Requirements

- IBM-PC 486, Pentium, or compatibles with built-in plug-and-play BIOS system
- Microsoft Windows 95, NT 4.0 or Windows 3.1x
- CD-ROM drive (internal or external)
- 16MB RAM
- At least 800MB hard disk with 100MB available
- Super VGA Color display with 256 colors or better

Important Note: Before using the scanner and software, you should read this *Microtek Scanner Installation Guide* first.

Installing under Windows 95

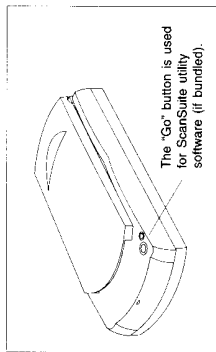
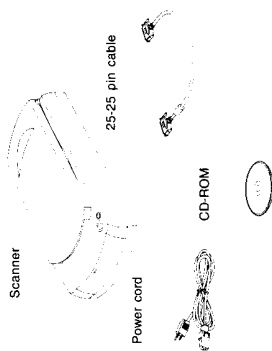
Contents

Installing under Windows 95	
Step 1 Unpack your scanner and check components	1
Step 2 Connect the scanner to your computer	2
Step 3 Install the scanner software	3
Step 4 Test your scanner	4
Installing under Windows 3.1x	5
Installing under Windows NT 4.0	6
Specifications	7

1. Unpack your scanner and check components

Open your scanner package and check the components as stated in your packing list. Do Not install any software until the hardware has been installed.

Before proceeding any further, check to make sure that you have all the illustrated items below.



2. Connect the scanner to your computer

1. Turn off your computer and printer, and remove the parallel printer cable or any device (e.g. Keypiro) from the computer's parallel port.
2. Connect the 25-to-25 pin cable at both the scanner's 25-pin **Port A** and your computer's parallel port.
3. Connect your original parallel printer cable to the scanner's 25-pin socket port (labeled **PRINTER**) and your printer jack.
4. Plug one end of the power cord to the power connector at the back panel of the scanner and the other end of the connector to your AC power source.
5. Power up your scanner. The Ready indicator (green light) on the front panel of the scanner flashes briefly. After a few seconds, the Ready indicator stops blinking and stays lit, the scanner is ready.
6. Turn on your computer, and check to make sure that your computer is configured as an EPP mode. Refer to the BIOS section of your PC's user manual.

Most computers allow you to quickly press the Del key several times while powering up. Then the screen displays 3 mode selections: ECP, EPP, and Standard. Choose EPP mode, then restart your computer to activate the settings you have made.

Technical Note For fastest scanning, your parallel port should be set for EPP (Enhanced Parallel Port) mode. This is usually configured in your system BIOS. If you encounter communication problems using the EPP setting, try changing this to bi-directional or Compatible mode. Please see the documentation that came with your computer for more information about checking or changing BIOS settings.

7. When your computer is restarted, Windows 95 is launched as well.

Note: When running Windows 95, Always turn on the scanner before the computer. If you don't, Windows will not be able to "see" your scanner.

3. Install the scanner software

Before you begin installing software, make sure your scanner is connected to the computer with the 25-to-25 pin cable and that the scanner power is turned on.

1. Insert the Microtek CD-ROM disc into your CD-ROM drive. The Microtek Scanner Software installer should come up automatically and list the software available for you.
2. Click on each software program in the order they appear on your screen to install all of the components.

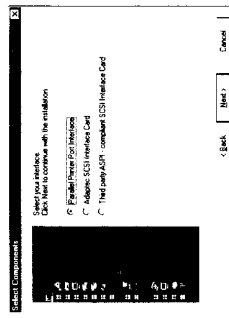
Note: If the Microtek Scanner Software installer is not automatically displayed on the screen, click **Start**, select **Run**, and type *d:\vsetup* (where *d:* is your CD-ROM drive).

Step 1 Install Microtek ScanWizard

Microtek ScanWizard is the twin driver used for the scanner to communicate with various applications. Microtek ScanWizard cannot be used by itself and requires another program in order to work.

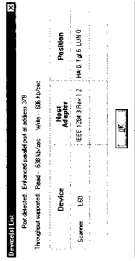
1. Click **Install Microtek ScanWizard**, then follow the instructions on the screen to start installation.

2. In the "Select Components", choose "Parallel Printer Interface" as your interface type.



3. If you have HP series printer driver in your system, click **Yes** to accept printer in daisy chain with the parallel printer port device.

4. Click **Yes** to check the peripheral environment related to your scanner. The result of the check is displayed, as shown below.



Make sure the **Tgt** option displays a SCSI ID number between 1 and 6, then continue.

5. Click **Yes** to let Swissknife utility to detect, if you want to.
6. When installation is complete, the **Microtek ScanWizard for Windows 95** group appears as a folder in the Programs menu.

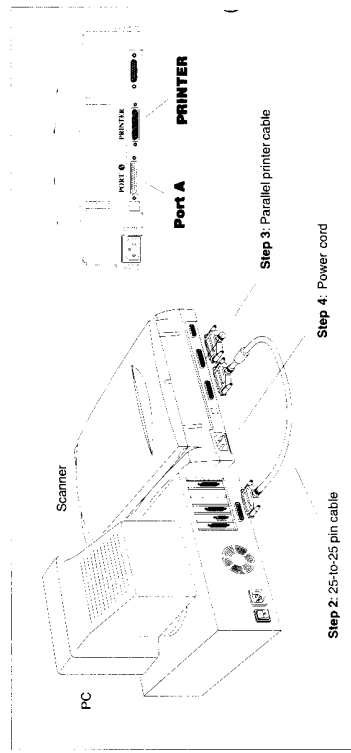
Note: The Swissknife utility program checks the status of your scanner. To check your scanner at any time, simply press the **Start** button, and choose **Swissknife** from the **Microtek ScanWizard for Windows 95** folder. Swissknife supports Windows 95 and NT only and is not compatible with Windows 3.1.

Step 2 Install software applications

Install each software application by clicking on the individual program options.

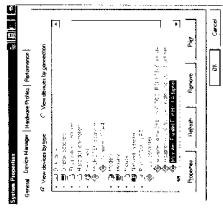
Step 3 Install documentation reader

Click **Install Adobe Acrobat Reader**, then follow screen instructions until installation is completed. Acrobat Reader is necessary for reading the manuals on your CD-ROM.

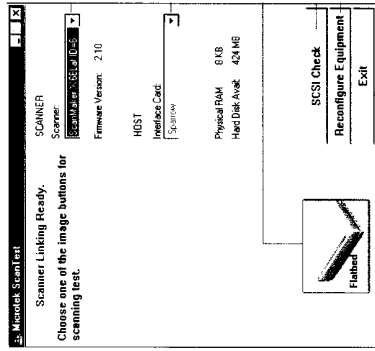


4. Test your scanner

1. Restart Windows 95. Click Start, Settings, and select Control Panel.
2. Double-click on the System icon in Control Panel, then select Device Manager from the top.
3. Double-click on "SCSI controllers", you can find "Microtek Parallel Port Host Adapter" list here. The scanner is ready to scan.



4. Start up Scanner Test from the Microtek Scan Wizard for Windows 95 folder in the Programs menu. When started up successfully, the screen below appears.



The deleted scanner and its SCSI ID number (depending on the scanner model you have)

The "smipicsr" means you are using Parallel Port interface.

The Flatbed button

The **SCSI Check** feature acts as a SCSI probe to verify the location of your scanner and the scanner ID.

The **Reconfigure Equipment** feature allows the system to update its own internal reference file and is useful when you have changed your setup or reconfigured your system.

Installing under Windows 3.1x

The instructions below pertain to installation of the software that came in your scanner under Windows 3.1x. Before doing this, however, you need to take the following steps:

1. Unpack your scanner and check components
2. Connect the scanner to your computer

Only when you have completed the above steps should you proceed with installing the software. See the previous sections of this document for instructions on performing the above.

Install the scanner software

Before you begin installing software, make sure your scanner is connected to the computer with the included 25-to-25 pin cable and that the scanner power is turned on.

1. Insert the Microtek CD-ROM into your CD-ROM drive
2. Launch Windows, then choose **File, Run** from Program Manager. Type *d:\setup.exe* (where *d:* is the drive letter of your CD-ROM). The **Microtek Scanner Software** installer will come up and list the software available for you. Click on each software program in the order they appear on your screen to install all of the components.

Step 1 Install Microtek ScanWizard

Microtek ScanWizard is the Scan driver used for the scanner to communicate with various applications. Microtek ScanWizard cannot be used by itself and requires another program in order to work.

1. Click **Install Microtek ScanWizard**, then follow screen instructions to start installation.

In the "Select Components", choose **Parallel Printer Port Interface** option as your interface.

3. When installation is complete, the **Microtek ScanWizard for Windows** group is created and the **CONFIG.SYS** file is modified accordingly.

Step 2 Install software applications

Install each software application by clicking on the individual program options.

Step 3 Install documentation reader

Click **Install Adobe Acrobat Reader**, then follow screen instructions until installation is completed. Acrobat Reader is necessary for reading the manuals on your CD-ROM.

Test your scanner

Restart your computer, and start up **Scanner Test** from the **Microtek ScanWizard for Windows** group. The scanner test reports the detected scanner model and the interface, **smipicsr**. You are now ready to scan.

Installing under Windows NT 4.0

The instructions below pertain to installation of the software that came in your scanner under Windows NT 4.0. Before doing this, however, you need to take the following steps:

1. Unpack your scanner and check components
2. Connect the scanner to your computer

Only when you have completed the above steps should you proceed with installing the software. See the previous sections of this document for instructions on performing the above.

Install the scanner software

Before you begin installing software, make sure your scanner is connected to the computer with the included 25-to-25 pin cable and that the scanner power is turned on.

1. Launch Windows NT 4.0, log in as Administrator.
2. Insert the Microtek CD-ROM disc into your CD-ROM drive, the Microtek Scanner Software installer should come up automatically and list the software available for you. Click on each software program in the order they appear on your screen to install all of the components.

Note: If the Microtek Scanner Software Installer is not automatically displayed on the screen, click **Start**, select **Run** and type: *d:\setup* (where *d* is the drive letter of your CD-ROM).

Step 1 Install Microtek ScanWizard

Microtek ScanWizard is the Twain driver used for the scanner to communicate with various applications. Microtek ScanWizard cannot be used by itself and requires another program in order to work.

1. Click Microtek **ScanWizard**, then follow screen instructions to start installation.
2. In the "Select Components" choose "Parallel Printer Port Interface" option as your interface.

Specifications

Media

Reflective color or black-and-white originals

Image Sensor

Linear array CCD with daylight fluorescent lamp.

Scanning Modes

Single scanning pass; 36-bit color internal process (36-bit color external process); 12-bit grayscale internal process (12-bit grayscale external process); 1-bit black and white; 12 built-in halftones.

Scan Frame

8.5" x 14"

Optical Resolution

600 dpi horiz. x 1200 dpi vert.

Interpolated Resolution

9600 dpi horiz. x 9600 dpi vert.

Image Controls Brightness Settings

From -100% to +100% in 1% increments

Contrast Settings

From -42% to +49% in 7% increments

Exposure Time Selections

From -18% to +747% in 3% increments

Resolution Settings

From 600 dpi to 6000 dpi in 6-dpi increments;

600 dpi to 1200 dpi in 12-dpi increments;

1200 dpi to 2400 dpi in 24-dpi increments;

2400 dpi to 4800 dpi in 48-dpi increments;

4800 dpi to 9600 dpi in 96-dpi increments

Scanning Speed

4.8 milliseconds per line for line-art, gray, and color (in speed mode); 6.5 milliseconds per line for line-art, gray, and color (in quality mode)

Voltage

AC 100V to 240V

Power Consumption

AC 100V to 240V: 1A Max.;

47 to 63 Hz; 30 watts

Dimensions (L x W x H)

21.5" x 11.9" x 2.76"

Environment

Operating temperature: 10° to 40°C (50° to 104°F)

Storage temperature: -10° to 60°C (14° to 140°F)

Relative humidity: 20% to 80%

Federal Communications Commission (FCC) Statement

This equipment has been tested and found to comply with the limits for a Class B digital device, pursuant to Part 15 of the FCC Rules. These limits are designed to provide reasonable protection against harmful interference in a residential installation. This equipment generates, uses and can radiate radio frequency energy and, if not installed and used in accordance with the instructions, may cause harmful interference to radio communications. However, there is no guarantee that interference will not occur in a particular installation. If this equipment does cause harmful interference to radio or television reception, which can be determined by turning the equipment off and on, the user is encouraged to try to correct the interference by one or more of the following measures:

- Reorient/relocate the receiving antenna.
- Increase the separation between the equipment and receiver.
- Connect the equipment into an outlet on a circuit different from that to which the receiver is connected.
- Consult the dealer or an experienced radio/TV technician for help.

Note: A shielded interface cable with ferritic core installed on scanner connector end must be used with this equipment.

Trade Name
ScanMaker X6EL

Model Name
MRS-1200Y6P

CAUTION

Changes or modifications not expressly approved by the manufacturer responsible for compliance could void the user's authority to operate the equipment.