

INSTRUCTIONS MANUAL  
FEDERAL COMMUNICATIONS COMMISSION  
INTERFERENCE STATEMENT

This equipment has been tested and found to comply with the limits for a Class B digital device, pursuant to Part 15 of the FCC Rules. These limits are designed to provide reasonable protection against harmful interference in a residential installation. This equipment generates, uses and can radiate radio frequency energy and, if not installed and used in accordance with the instructions, may cause harmful interference to radio communications. However, there is no guarantee that interference will not occur in a particular installation. If this equipment does cause harmful interference to radio or television reception, which can be determined by turning the equipment off and on, the user is encouraged to try to correct the interference by one or more of the following measures:

- Reorient or relocate the receiving antenna.
- Increase the separation between the equipment and receiver.
- Connect the equipment into an outlet on a circuit different from that to which the receiver is connected.
- Consult the dealer or an experienced radio/TV technician for help.

CAUTION:

To assure continued FCC compliance:

- (1) Any changes or modifications not expressly approved by the grantee of this device could void the user's authority to operate the equipment.

FCC Label Compliance Statement:

This device complies with Part 15 of the FCC Rules. Operation is subject to the following two conditions: (1) this device may not cause harmful interference, and (2) this device must accept any interference received, including interference that may cause undesired operation.

# Microtek Scanner Installation Guide for the ScanMaker® 4700



**Version**  
for PC (Windows 98)  
& Mac (Apple iMac / G3 / G4 with  
built-in USB ports)

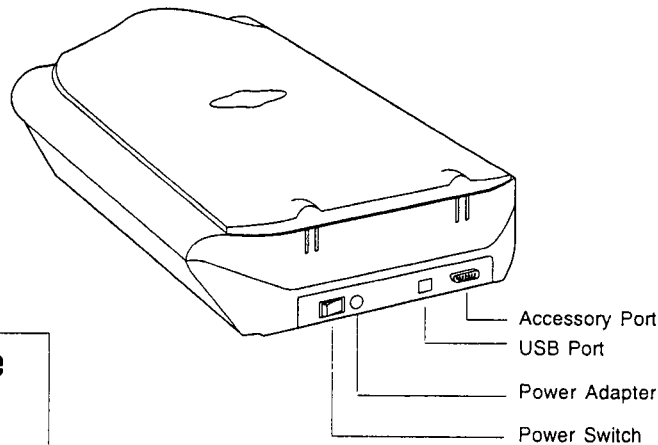
This document provides information on how to install your Microtek scanner on a PC or Mac using the scanner's Universal Serial Bus (USB) interface. For PC USB installation, see pages 1 to 5. For Mac USB installation, see pages 6 to 8.

## USB Installation on the PC


### 1. Unpack scanner

Open your scanner package and check the components as stated in your packing list. Install the software first, then the hardware. Before proceeding any further, check that you have the items listed on the packing list. If any item is missing, contact Microtek.

Your Microtek ScanMaker scanner comes with an USB built-in interface. For installation, use the scanner's USB port. See the graphic below to locate the different ports on the back of the scanner, including the scanner accessory port.



**Energy Star Notice**



As an ENERGY STAR Partner, Microtek International, Inc. has determined that this scanner meets the ENERGY STAR guidelines for energy efficiency.

## USB Installation on the PC

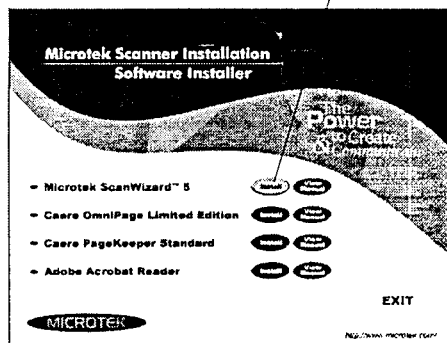
### 2. Install software

1. Turn on your computer.
2. Insert the Microtek CD-ROM into your CD-ROM drive. The Microtek Software Installer screen should automatically come up.

*Note: If the Microtek Software Installer screen does not come up automatically, double-click "My Computer" on your Windows desktop, then double-click the CD-ROM icon to start the installer program.*

3. When the Microtek Software Installer screen appears, click on each software program in the order that it appears on the screen to install all software components.

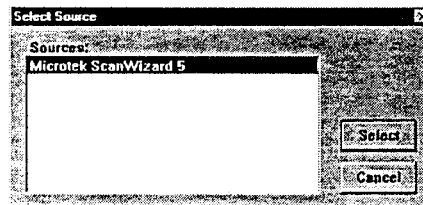
Click the "Install" button for each software on the list to install.



For each software, follow the on-screen instructions during installation. Default values are specified at every point during installation; simply accept these values to continue installation until you finish.

In some applications, auxiliary information (such as the Readme file) may be displayed after that particular program finishes installing. Simply click the "X" close box at the upper right corner of the displayed window to return to the Microtek Software Installer. **Do not restart your computer until all the software has been installed.**

- a) **Microtek ScanWizard 5.** This is your scanner controller program for capturing images from your scanner. Follow the on-screen instructions during installation. After ScanWizard 5 finishes installing, you will be prompted to restart your computer. Select **No** to continue installing the rest of the software.
- b) **Caere OmniPage Limited Edition.** This is your OCR text-scanning software. During installation of OmniPage Limited Edition, you will be asked to select your "Source". Make sure **Microtek ScanWizard 5** is selected. At the end of installing OmniPage Limited Edition, select "No, I will restart my computer later" (not "Restart your computer").

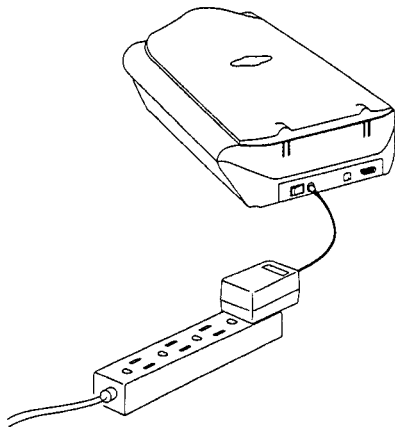


- c) **Caere PageKeeper Standard.** This is your document management program.
  - d) **Adobe Acrobat Reader.** This is your documentation reader for reading and printing the manuals on the CD-ROM.
4. After all the software has been installed, click **EXIT** at the bottom left of the Microtek Software Installer screen.

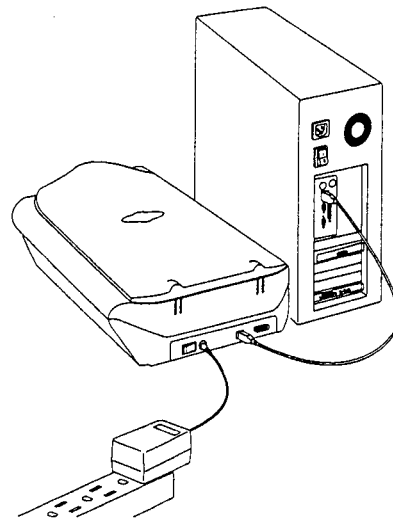
## USB Installation on the PC

### 3. Connect scanner

1. Turn off your computer.
2. Plug the power adapter into the back of the scanner, and plug the other end into a wall outlet or power source. **Make sure no other cable is connected to the scanner except the power adapter at this point.**
3. Connect one end of the USB cable to your computer, and connect the other end of the cable to the scanner's USB port.



This will turn on the scanner. The green light on the front of the scanner will blink for a few seconds and then stay on solid.

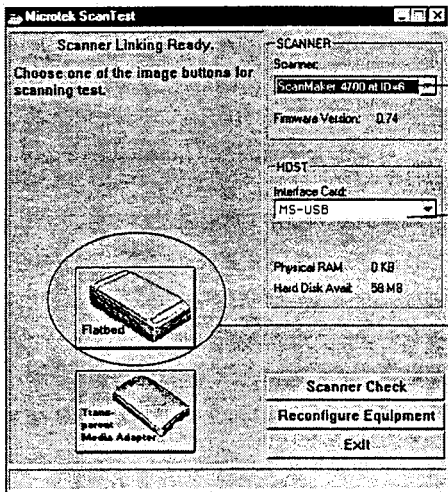


4. Turn on your computer. The system will find your scanner automatically.

## USB Installation on the PC

### 4. Test your scanner

1. In Windows, click Start, Settings, and select **Control Panel**. Double-click the **System** icon in Control Panel, then select **Device Manager** from the top.
2. Double-click **Imaging Device** or **Microtek Scanners**. Verify that your scanner is listed here. Click "OK" to close all dialog boxes.
3. In Windows, go to "Start, Programs, Microtek ScanWizard 5 for Windows", and select **Scanner Test**. When started successfully, the screen below appears.

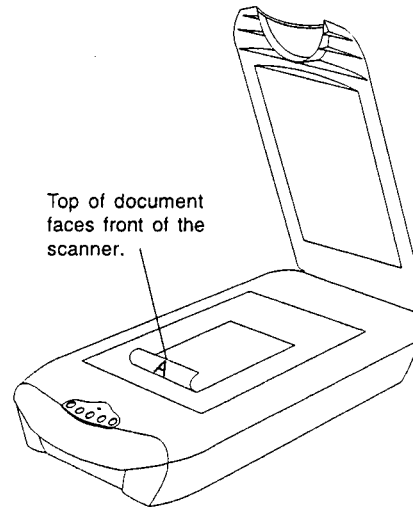


Detected scanner

Detected Interface

Click the "Flatbed" button to preview

4. Place your document face down on the scanner glass, and click on the **Flatbed** button in the Microtek ScanTest window.



5. A preview of your image will be displayed in the Microtek ScanTest window. Click **OK**, and exit Microtek ScanTest; you are now ready to scan.

If you encounter problems with the scan test, see the digital file *USB\_Troubleshootingpc.pdf* in the *Techinfo* folder on your Microtek CD-ROM.

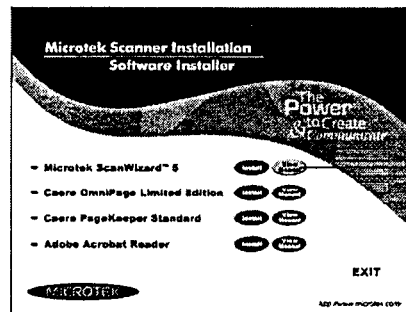
## USB Installation on the PC

### 5. Scanning an Image

1. Place the image to be scanned on your scanner.
2. Double-click the **ScanWizard 5** icon on the desktop, or click the **Scan** button in the ScanWizard 5 Assistant Toolbox to launch ScanWizard 5.
3. When ScanWizard 5 launches, it automatically performs a fast preview of the material on your scan bed and displays it in the preview area.
4. In the preview window, you can resize the floating dotted line around the image by dragging on the edge or corner of the scan frame to determine the final size of the actual scan.
5. To make adjustments to the image, use the tool buttons. To scan the image, click the **Scan to** button. The image is then scanned and saved to a file. Aside from saving, you may also deliver the saved image to an image-editing software, an e-mail editor, or a web browser.

### 6. Reading the documentation

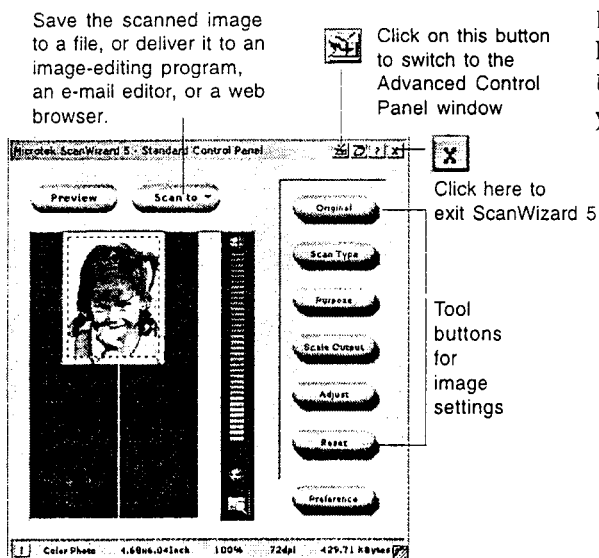
1. Insert the Microtek CD-ROM into your CD-ROM drive.
2. When the Microtek Software Installer comes up on your screen, click the **View Manual** button that corresponds to the manual you wish to read. This will launch Adobe Acrobat Reader, and you can then read or print the manual.



Click the "View Manual" button to see the manuals

### 7. Troubleshooting

If you encounter problems with software or hardware installation, see the digital file *USB\_Troubleshootingpc.pdf* in the *Techinfo* folder on your Microtek CD-ROM.



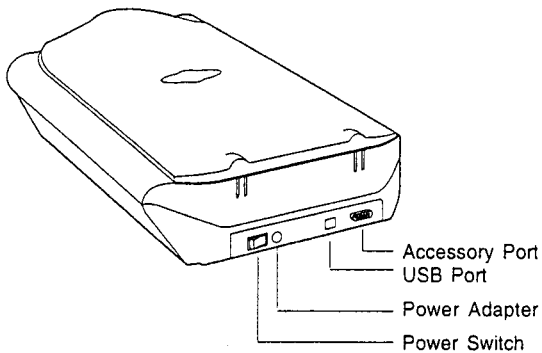
Resize dotted line for size of the actual scan

## USB Installation on the Macintosh

### 1. Unpack scanner

Open your scanner package and check the components as stated in your packing list. Install the software first, then the hardware. Before proceeding any further, check that you have the items listed on the packing list. If any item is missing, contact Microtek.

Your Microtek ScanMaker scanner comes with an USB built-in interface. For installation, use the scanner's USB port. See the graphic below to locate the different ports on the back of the scanner, including the scanner accessory port.



### 2. Install software

1. Turn on your computer.
2. Install the image-editing application that came with your scanner.
3. Insert the Microtek CD-ROM into your CD-ROM drive, and double-click the CD-ROM when it appears on your Macintosh desktop to open it.

*Note: For iMac users, please visit Apple's web site at <http://www.apple.com> to download and install any iMac updates you may need.*

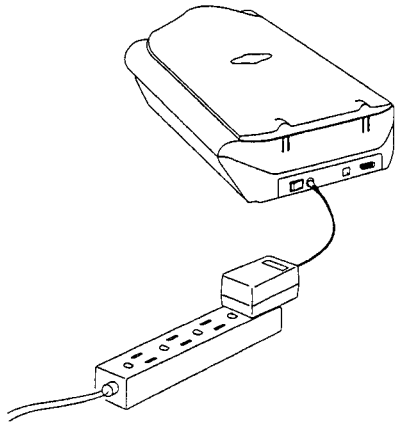
4. Next, install the software on your Microtek CD-ROM, including the following:
  - **Caere OmniPage Limited Edition.** This is your OCR text-scanning software.
  - **Microtek ScanWizard 5.** This is your scanner controller program for capturing images from your scanner and delivering it to your image-editing application. ScanWizard 5 requires System 8.1 or later.
  - **Adobe Acrobat Reader.** This is your documentation reader for reading and printing the manuals on the CD-ROM.

To install each software, open the software program's folder and then click the "Installer" icon in that program's folder. Follow screen instructions until installation is completed.

## USB Installation on the Macintosh

### 3. Connect scanner

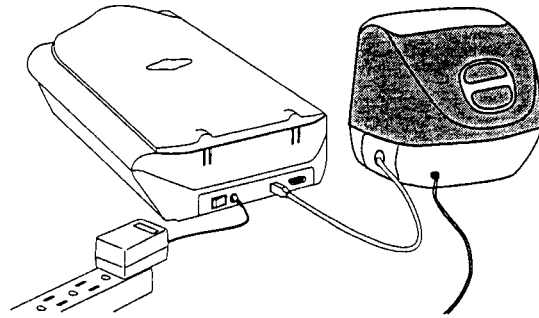
1. Turn off your computer.
2. Plug the power adapter into the back of the scanner, and plug the other end into a wall outlet or power source. **Make sure no other cable is connected to the scanner except the power adapter at this point.**



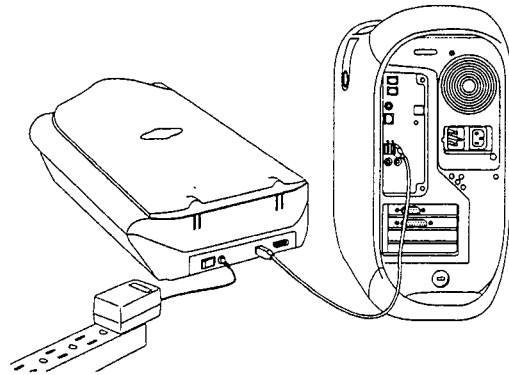
This will turn on the scanner. The green light on the front of the scanner will blink for a few seconds and then stay on solid.

3. Connect one end of the USB cable to your computer, and connect the other end of the cable to the scanner's USB port.

#### A. Connecting to an Apple iMac



#### B. Connecting to a Power Mac G3 with built-in USB ports



4. Turn on your computer. The system will find your scanner automatically.



## USB Installation on the Macintosh

### 4. Scanning an image

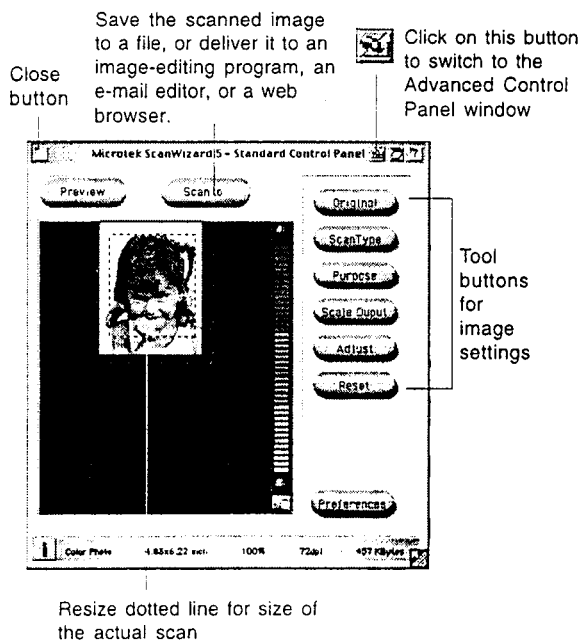
1. Place the image to be scanned on your scanner.
2. Double-click the ScanWizard 5 icon on the desktop, or click the **Scan** button in the ScanWizard 5 Assistant Toolbox to launch ScanWizard 5.
3. When ScanWizard 5 launches, it automatically performs a fast preview of the material on your scan bed and displays it in the preview area.
4. In the preview window, you can resize the floating dotted line around the image by dragging on the edge or corner of the scan frame to determine the final size of the actual scan.
5. To make adjustments to the image, use the tool buttons. To scan the image, click the **Scan to** button. The image is then scanned and saved to a file. Aside from saving, you may also deliver the saved image to an image-editing software, an e-mail editor, or a web browser.

### 5. Reading the documentation

1. Insert the Microtek CD-ROM into your CD-ROM drive.
2. Launch the Adobe Acrobat Reader program. From the File menu, choose the **Open** command, and open the file for the manual that you wish to view; manuals have a *.pdf* extension to their file name. The manual is then ready to be viewed or printed.

### 6. Troubleshooting

If you encounter problems with software or hardware installation, see the digital file *USB\_Troubleshooting.pdf* in the *Techinfo* folder on your Microtek CD-ROM.



## Federal Communications Commission Interference Statement

This equipment (Trade Name: ScanMaker 4700, Model Name: MRS-2400G12U) has been tested and found to comply with the limits for a Class B digital device, pursuant to Part 15 of the FCC rules. These limits are designed to provide reasonable protection against harmful interference in a residential installation. This equipment generates, uses and can radiate radio frequency energy and, if not installed and used in accordance with the instructions, may cause harmful interference to radio communications. However, there is no guarantee that interference will not occur in a particular installation. If this equipment does cause harmful interference to radio or television reception, which can be determined by turning the equipment off and on, the user is encouraged to try to correct the interference by one or more of the following measures:

- Reorient/relocate the receiving antenna.
- Increase the separation between the equipment and receiver.
- Connect the equipment into an outlet on a circuit different from that to which the receiver is connected.
- Consult the dealer or an experienced radio/TV technician for help.

**FCC Caution:** To assure continued compliance, (example — use only shielded interface cables when connecting to computer or peripheral devices). Any changes or modifications not expressly approved by the party responsible for compliance could void the user's authority to operate this equipment.

This device complies with Part 15 of the FCC Rules. Operation is subject to the following two conditions: (1) This device may not cause harmful interference, and (2) this device must accept any interference received, including interference that may cause undesired operation.

Responsible Party: Microtek Lab, Inc.  
3715 Doolittle Drive  
Redondo Beach, CA 90278-1226  
U.S.A.  
Telephone No: 1-310-297-5000

---

## Federal Communications Commission Statement

This equipment (Trade name: ScanMaker 4700, Model name: MRS-2400G12U) has been tested and found to comply with the limits for a Class B digital device, pursuant to Part 15 of the FCC Rules. These limits are designed to provide reasonable protection against harmful interference in a residential installation. This equipment generates, uses and can radiate radio frequency energy and, if not installed and used in accordance with the instructions, may cause harmful interference to radio communications. However, there is no guarantee that interference will not occur in a particular installation. If this equipment does cause harmful interference to radio or television reception, which can be determined by turning the equipment off and on, the user is encouraged to try to correct the interference by one or more of the following measures:

- Reorient/relocate the receiving antenna.
- Increase the separation between the equipment and receiver.
- Connect the equipment into an outlet on a circuit different from that to which the receiver is connected.
- Consult the dealer or an experienced radio/TV technician for help.

*Note: A shielded interface cable with ferrite core installed on the scanner connector end must be used with this equipment.*

### CAUTION

Changes or modifications not expressly approved by the manufacturer responsible for compliance could void the user's authority to operate the equipment.

## ScanMaker 4700 Specifications

Media	Reflective color or black-and-white originals
Scanning Modes	Color, grayscale, and black & white in a single scanning pass 42-bit true color Approximately 68.7 billion colors 12-bit grayscale 4096 shades of gray 1-bit black & white 64 shades of gray simulated Halftone selections 12 built-in halftone patterns
Scanning area	8.5" x 11.7" / 215.9mm x 297.18mm (A4 size)
Resolution	Optical resolution: 1200 dpi x 2400 dpi Maximum resolution: 9600 dpi
Voltage	AC 100V to 240V
Dimensions (L x W X H)	20" x 11.4" x 4.6" (510mm x 290mm x 117mm)
Weight	8.1lbs / 3.6kg
Environment	Operating temperature: 10° to 40°C (50° to 104°F) Relative humidity: 20% to 85%
Interface	USB

---