

FCC ID: EF9MRS-2400 TPFU

Installing and Getting Started for the ScanMaker® 8700



Version
FireWire - Win98 SE, Win 2000, Mac G3/G4 and iMac DV
USB - Win98, Win 2000, Mac G3/G4 and iMac

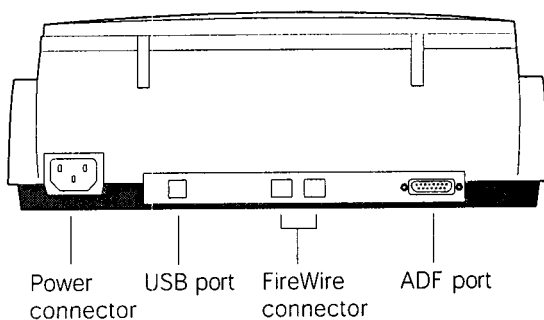
This document provides information on how to install your Microtek scanner on a PC or Mac using the scanner's FireWire or USB interface and describes the features of the scanning.

Installation for PC and Macintosh

1. Unpack scanner

Open your scanner package and check major components as shown in this section. For a complete listing of components, refer to the Packing List. If any item is missing, contact Microtek Customer Service.

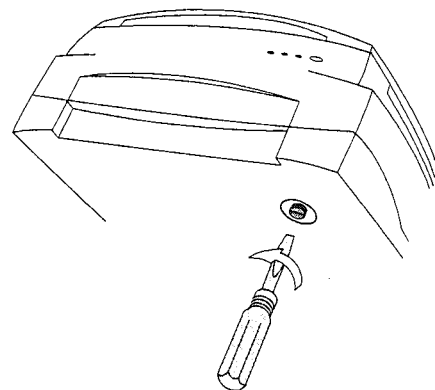
Your Microtek ScanMaker 8700 scanner comes with **FireWire** and **USB** built-in interfaces. See the graphic below to locate the different ports on the back of the scanner, including the scanner's ADF port.



2. Unlock the carriage

With the scanner turned off, unlock the carriage by using a screwdriver or a coin into the locking screw located at the bottom of the scanner.

Turn the locking screw counterclockwise to unlock it. When successfully unlocked, the screw will push out a little, becoming nearly even with the back of the scanner. This indicates the scanner carriage has been released, and the scanner is ready to be used.



Energy Star Notice



As an ENERGY STAR Partner, Microtek International, Inc. has determined that this scanner meets the ENERGY STAR guidelines for energy efficiency.

Trademarks

Microtek®, ScanMaker®, and ScanWizard® are registered trademarks of Microtek International Inc. Adobe®, Acrobat®, and PhotoDeluxe™ are trademarks or registered trademarks of Adobe Systems Incorporated. Caere®, OmniPage®, and PageKeeper® are registered trademarks of Caere Corporation. Trellix™ and Trellix Web™ are trademarks of Trellix Corporation. Ulead® and PhotoImpact® are registered trademarks of Ulead Systems, Inc. Macintosh®, Apple®, FireWire® and FireWire logo are trademarks or registered trademarks of Apple Computer, Inc. Windows® is a registered trademark of Microsoft Corporation. All other products or name brands are trademarks of their respective holders.

3. Install software

For PC Users

1. Turn on your computer.
2. Insert the Microtek CD-ROM into your CD-ROM drive. This includes your scanner controller program for capturing images from your scanner. The Microtek Software Installer screen should automatically come up.

Note: If the Microtek Software Installer screen does not come up automatically, double-click the following in succession: "My Computer" on your Windows desktop; the CD-ROM icon; and cdsetup.exe to start the installer program.

3. When the Microtek Software Installer screen appears, click each software program in the order that it appears on the screen to install all software components. (Your software includes programs for image editing, OCR text editing, document management, and the Adobe Acrobat Reader program for reading documentation).

For each software, follow the on-screen instructions during installation. Default values are specified at every point during installation; simply accept these values to continue installation until you finish.

Note: You may be prompted to restart the computer at this point. Do not restart your computer until all the software has been installed.

In some applications, auxiliary information (such as the Readme file) may be displayed after that particular program finishes installing. Simply click the "X" close box at the upper right corner of the displayed window to return to the Microtek Software Installer.

4. After all the software has been installed, click **EXIT** on the Microtek Software Installer screen
5. If any other image-editing software is bundled with your scanner, install them now.

Note: The software may be on a separate CD-ROM.

6. Restart your computer.

For Macintosh Users

1. Turn on your computer.
2. Install the image-editing software, which is a separate CD-ROM included with your scanner package.
3. Install all the software on your Microtek CD-ROM. To install each software, open the software program's folder, and then click the "Installer" icon. Follow the screen instructions until installation is completed.

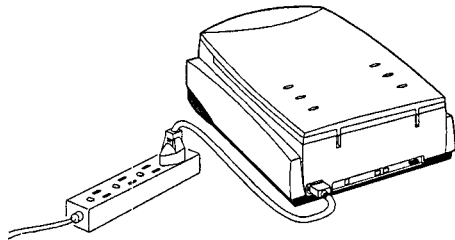
- Microtek ScanWizard 5 is the scanner controller program for capturing images from your scanner and delivering it to your image-editing application.

Note: For iMac users, please visit Apple's web site at <http://www.apple.com> to download and install any iMac updates you may need.

- Install the software documentation reader for reading and printing the manuals on the CD-ROM.
4. Restart your computer.

4. Connect scanner

1. Plug the power cord into the back of the scanner, and plug the other end into a wall outlet or power source. **Make sure no other cable is connected to the scanner except the power cord at this point.**



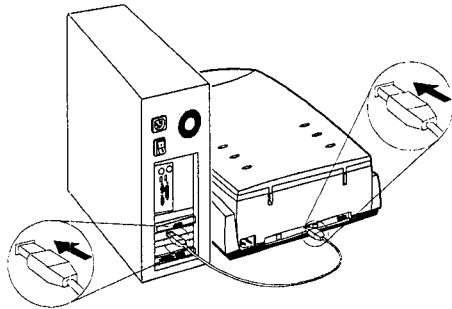
2. Connect either the **FireWire** or the **USB** cable to your computer and scanner. (You can use only one interface at a time.)

A. FireWire cable connections


If your system is FireWire-ready, connect one end of the FireWire cable to your computer, and connect the other end of the cable to the scanner's FireWire connector.

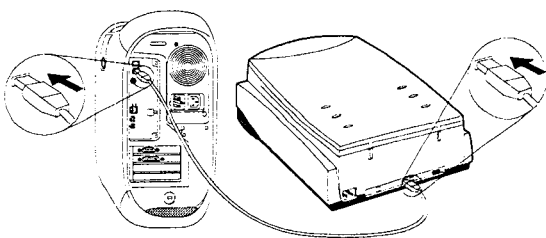
If your system is not FireWire-ready, you will need to install a FireWire card. For more details on how to install the FireWire card, please refer to the *FireWire Installation Guide* on a separate sheet included with the FireWire card.

PC



Mac

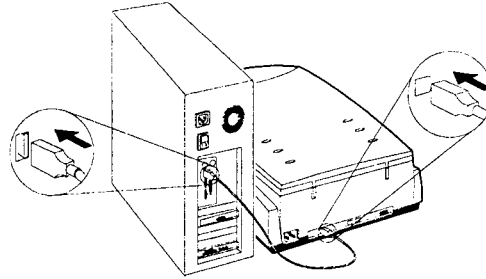
Before connecting, plug the cable connector into the computer's port labeled FireWire  logo.




B. USB cable connections

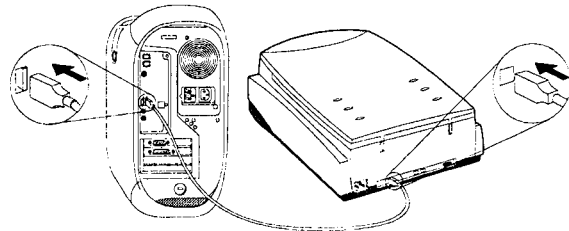
Connect one end of the USB cable to your computer, and connect the other end of the cable to the scanner's USB port.

PC



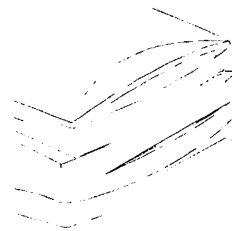
Mac

Before connecting, plug the cable connector into the computer's port labeled FireWire  logo.



3. Press the scanner's power button to turn on your scanner.

The green light on the front of the scanner will blink for a few seconds and then stay on solid.



Power button

Press the scanner's power button to turn the scanner on/off.

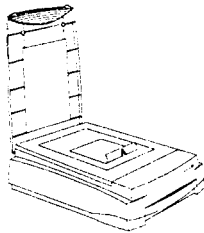
4. The system will detect your scanner automatically.

*Note: If the system is unable to detect your scanner, see the Troubleshooting file in the **Techinfo** folder on your Microtek CD-ROM.*

5. Scanning an image

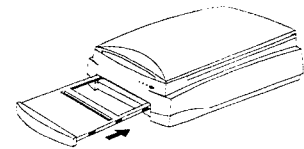
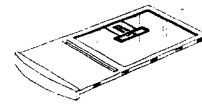
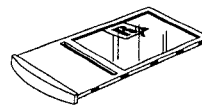
To scan photos:

1. Position the photo to be scanned on the scanner bed.
2. Double-click the **ScanWizard 5** icon on your desktop to launch the ScanWizard 5 - Standard Control Panel. When ScanWizard 5 launches, it automatically performs a fast preview of the material and displays it in the preview area.
3. In the preview window, you can resize the scan frame (floating dotted line) around the image by dragging on the edge or corner of the scan frame to determine the final size of the actual scan.
4. Click the **Original** button, then select **Photo**.
5. To scan the image, click the **Scan to** button. The image is then scanned and saved to a file. Aside from saving, you may also deliver the scanned image to an image-editing software, an e-mail editor, or a web browser.

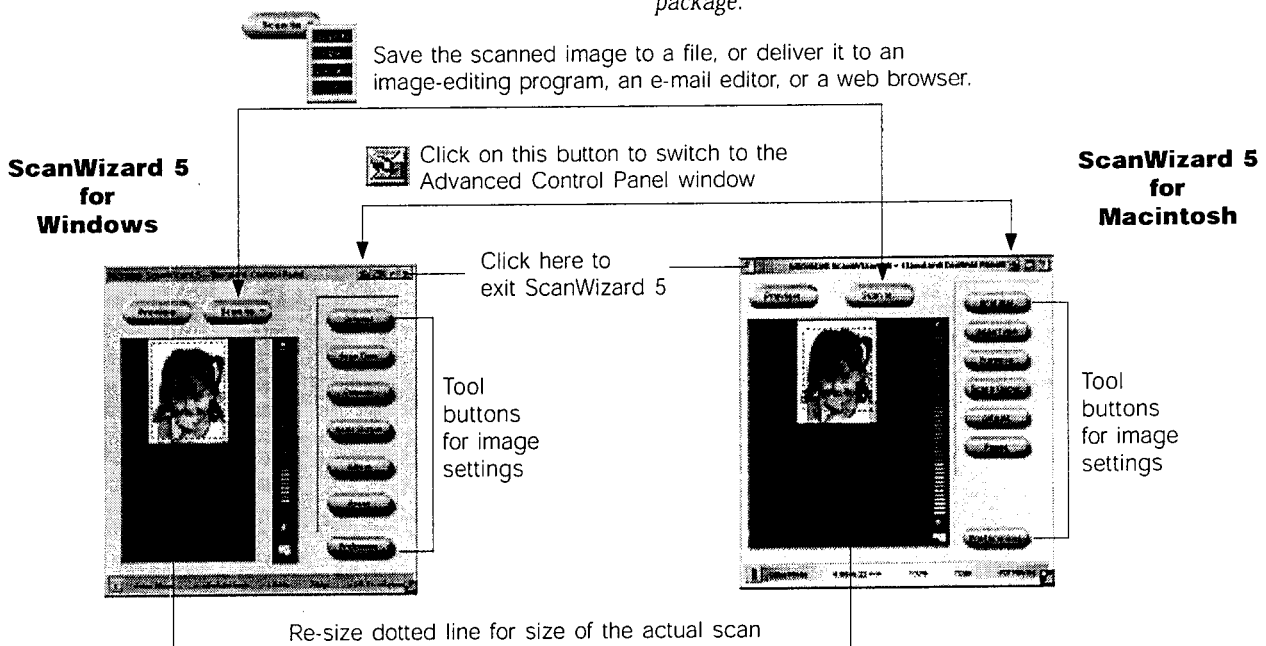


To scan slides and filmstrips:

1. To scan slides or filmstrips, you will need to install an accessory like the 8" x 10" Glass Film Holder, the Main Staging Template, the 35mm Mounted Film Template, etc. Refer to a separate document on how to install the accessories. Here is a sample to install the Glass Holder for scanning.
 - a) Place the film on top of the Glass Film Holder, then place the vinyl strip on the edges outside the film to secure the film to the holder.
 - b) Install the Glass Film Holder by gently pushing the transparency tray back in.
2. Follow (Steps 2, 3, and 5) the procedures in scanning a photo. For Step 4, select **Positive** (for scanning slides) and **Negative** (for scanning negative film).



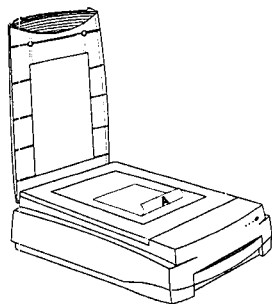
Note: For more details on scanning, please refer to Microtek's Step-by-Step Tutorial guide included in your package.



6. How to do OCR in ScanWizard 5

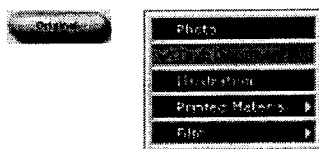
The Optical Character Recognition (OCR) is an application that converts scanned documents into text that can be edited from your word processing application.

1. Place a text document to be scanned on the scanner bed, then launch ScanWizard 5.



2. Click the following buttons and select the following options if you are scanning a black & white text document for OCR purposes:

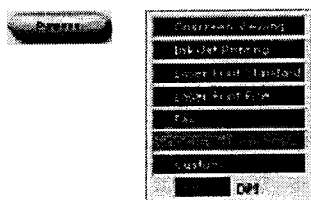
Original: Select *Text Document*.



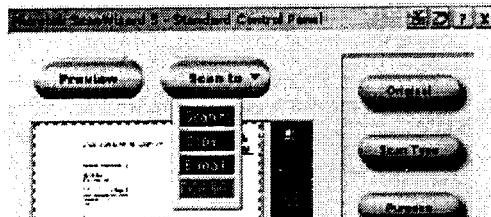
Scan Type: Only *Black & White* option is available if you selected *Text Document* as your Original (previous step).



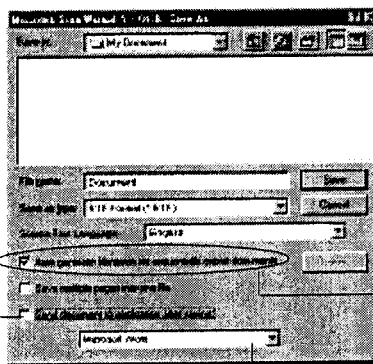
Purpose: Select *OCR Text*.



3. Click the *Scan to* button, then hold down your mouse for a moment. When the options menu appears, select *OCR*.



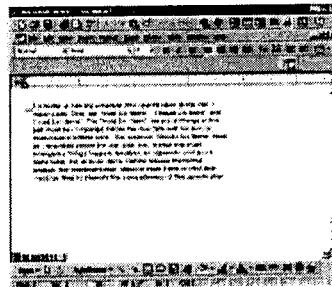
4. When the OCR Save As dialog box appears, use the default "Document" file name or key in your preferred name, and select *.rtf* or *.txt* as the export file format. Click *Save* to deliver the scanned image directly to your chosen folder.



Selecting this check box will add specified file name with serial numbers to generate multiple file names for the scanned and saved images in continuous sequence.

From Combo box, choose one word processing application for text editing.

If you select the check box "Send documents to application after saving", the saved file can be opened in your word processing application and is ready to be edited.



7. Reading the documentation

For PC users

1. Insert the Microtek CD-ROM into your CD-ROM drive.
2. When the Microtek Software Installer comes up on your screen, click the *View Manual* button that corresponds to the manual you wish to read. This will launch Adobe Acrobat Reader, and you can then read or print the manual.

For Macintosh users

1. Insert the Microtek CD-ROM into your CD-ROM drive.
2. Launch the Adobe Acrobat Reader program. From the File menu, choose the *Open* command, and open the file for the manual that you wish to view; manuals have a *.pdf* extension to their file name. The manual is then ready to be viewed or printed.

Federal Communications Commission Interference Statement


This equipment has been tested and found to comply with the limits for a Class B digital device, pursuant to Part 15 of the FCC rules. These limits are designed to provide reasonable protection against harmful interference in a residential installation. This equipment generates, uses and can radiate radio frequency energy and, if not installed and used in accordance with the instructions, may cause harmful interference to radio communications. However, there is no guarantee that interference will not occur in a particular installation. If this equipment does cause harmful interference to radio or television reception, which can be determined by turning the equipment off and on, the user is encouraged to try to correct the interference by one or more of the following measures:

- Reorient or relocate the receiving antenna.
- Increase the separation between the equipment and receiver.
- Connect the equipment into an outlet on a circuit different from that to which the receiver is connected.
- Consult the dealer or an experienced radio/TV technician for help.

FCC Caution: To assure continued compliance, (example - use only shielded interface cables when connecting to computer or peripheral devices). Any changes or modifications not expressly approved by the party responsible for compliance could void the user's authority to operate this equipment.

This device complies with Part 15 of the FCC Rules. Operation is subject to the following two conditions: (1) This device may not cause harmful interference, and (2) this device must accept any interference received, including interference that may cause undesired operation.

Responsible Party: Loi Han
 3715 Doolittle Drive
 Redondo Beach, CA 90278-1226
 U.S.A.
 Telephone No: 1-310-297-5000

Trade Name	Model Number
ScanMaker 8700	MRS-2400TPFU
Tested to Comply With FCC Standards	
	
FOR HOME OR OFFICE USE	

8. Troubleshooting

If you encounter problems with the installation, see the troubleshooting file in the *Techinfo* folder on your Microtek CD-ROM.

Federal Communications Commission Interference Statement

This equipment (Model: MRS-2400TPFU) has been tested and found to comply with the limits for a Class B digital device, pursuant to Part 15 of the FCC Rules. These limits are designed to provide reasonable protection against harmful interference in a residential installation. This equipment generates, uses and can radiate radio frequency energy and, if not installed and used in accordance with the instructions, may cause harmful interference to radio communications. However, there is no guarantee that interference will not occur in a particular installation. If this equipment does cause harmful interference to radio or television reception, which can be determined by turning the equipment off and on, the user is encouraged to try to correct the interference by one or more of the following measures:

- Reorient or relocate the receiving antenna.
- Increase the separation between the equipment and receiver.
- Connect the equipment into an outlet on a circuit different from that to which the receiver is connected.
- Consult the dealer or an experienced radio/TV technician for help.

Note: 1) A shielded of USB interface cable with ferrite core installed on the scanner connector end must be used with this equipment. 2) AC adapter with ferrite core installed on the scanner connector end must be used with this equipment.

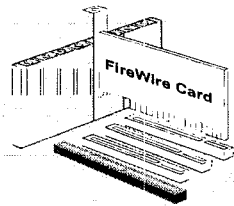
CAUTION

Changes or modifications not expressly approved by the manufacturer responsible for compliance could void the user's authority to operate the equipment.

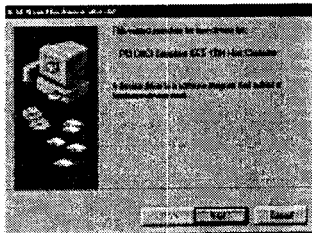
IEEE 1394 (FireWire) Host Adapter Installation Guide

Windows 98 SE

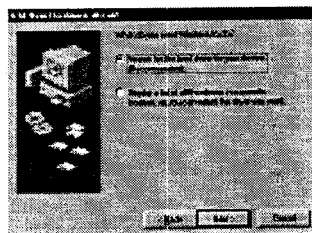
1. Turn off your computer.
2. Remove the computer cover and insert the **FireWire card** into the available PCI slot. Push the card in to make sure it's seated all the way in slot.



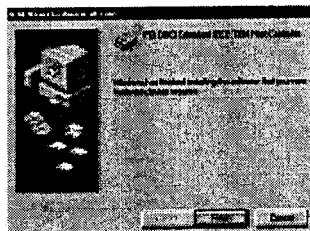
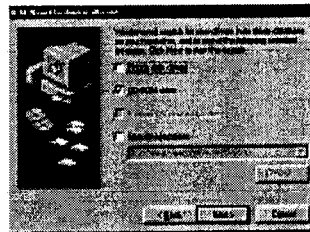
3. Restart your computer.
4. Windows 98 SE will start to locate the device. When the **Found New Hardware Wizard** appears, click **Next** to start the installation process.



5. The **Add New Hardware Wizard** dialog box appears. Select "**Search for the best driver**" option, then click **OK**. Follow the on-screen instructions by clicking **Next** until you have finished installing.



6. Windows will automatically detect the Operating System driver location; search for the **FireWire card**. You may be prompted to insert the **Windows 98 SE CD-ROM** into the CD-ROM drive. Insert the disk, then click **Next** consecutively to continue until Windows has finished installing the device.



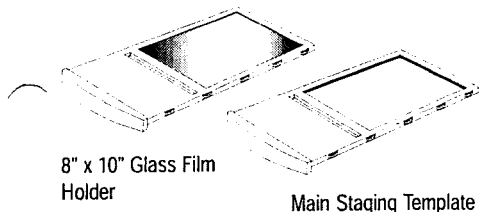
Windows 2000

1. Turn off your computer.
2. Remove the computer cover and insert the **FireWire card** to the available PCI slot.
3. Restart your computer.
4. Windows 2000 will automatically detect the **FireWire card** device and will inform you when it is ready for use.

How to Install Your Scanner Transparency Accessories

How to install the various scanner transparency accessories that come with dual-bed scanners featuring the E.D.I.T technology.

Before proceeding any further with installation or use, check first to see that your package includes the following.

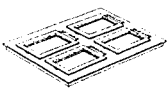


8" x 10" Glass Film Holder

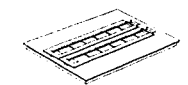
Main Staging Template



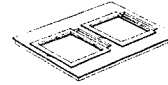
35mm Mounted Slide Template



6 x 9 cm Film Template



35mm Filmstrip Template



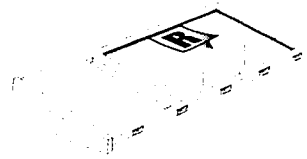
4" x 5" Film Template

There are two ways to scan transparent film.

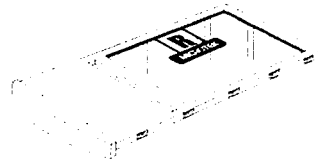
- By using the 8" x 10" Glass Film Holder, which is used to scan non-standard-sized transparent film.
- By using the Main Staging Template, which is used together with the individual templates to scan a particular type of standard-sized transparent film, such as individual 35mm slides, 35mm filmstrips, 6 x 9 cm film, or 4" x 5" film.

Using the 8" x 10" Glass Film Holder

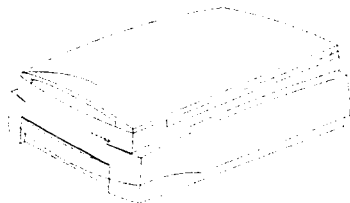
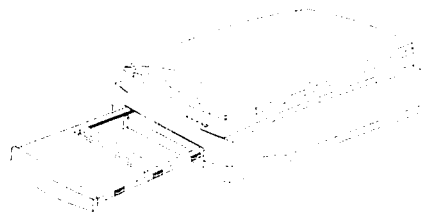
1. Place the film on top of the Glass Film Holder.



2. Place the vinyl strip on the edges outside the film to secure the film to the holder.



3. Place the Glass Film Holder into the transparency tray of the scanner.

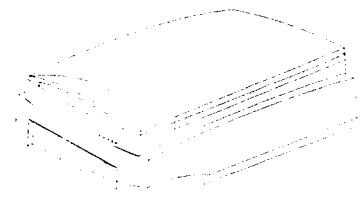
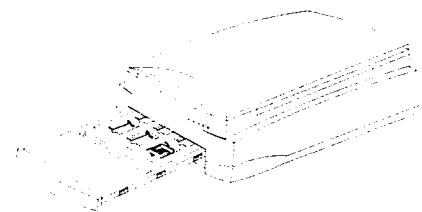
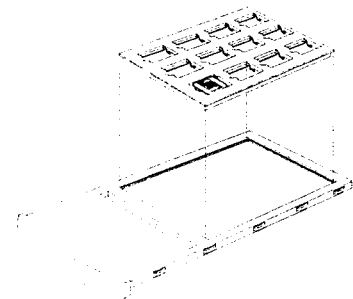


Using the 35mm Mounted Slide Template

1. Insert the individual 35mm slides to be scanned into the 35mm Mounted Slide Template.



2. Place the 35mm Mounted Slide Template in the Main Staging Template, then put this assembly in the transparency tray of the scanner.



English

Deutsch

Français

Italiano

Español

English

Deutsch

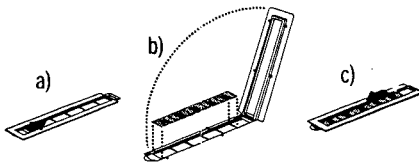
Français

Italiano

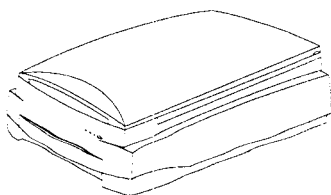
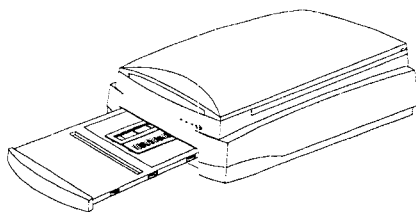
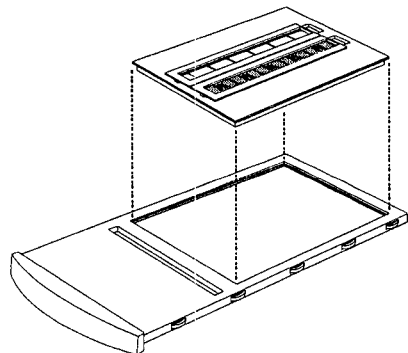
Español

Using the 35mm Filmstrip Template

1. Push to open the 5-piece 35mm Filmstrip Template.
2. Place the 35mm filmstrip to be scanned in the 35mm Filmstrip Template.
3. Pull to close the 5-piece 35mm Filmstrip Template.

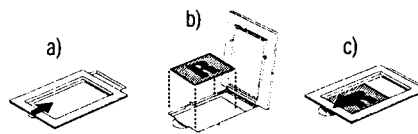


4. Place the 35mm Filmstrip Template in the Main Staging Template, then put this assembly in the transparency tray of the scanner.

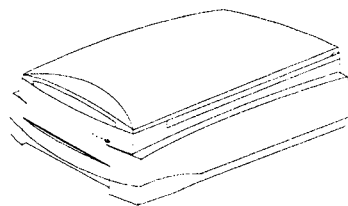
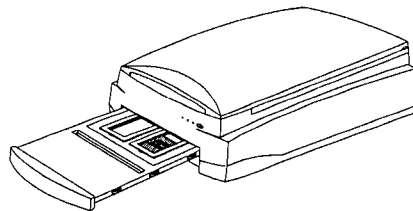
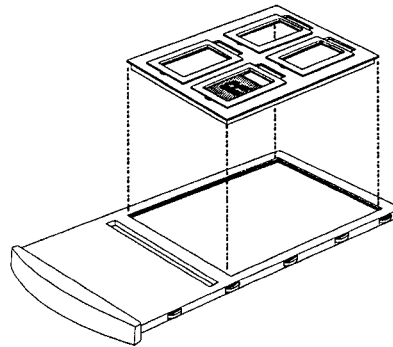


Using the 6 x 9 cm Film Template

1. Push to open the 6 x 9 cm Film Template.
2. Place the film to be scanned in the 6 x 9 cm Film Template.
3. Pull to close the template.

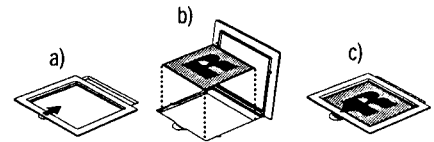


4. Place the 6 x 9 cm Film Template in the Main Staging Template, then put this assembly in the transparency tray of the scanner.

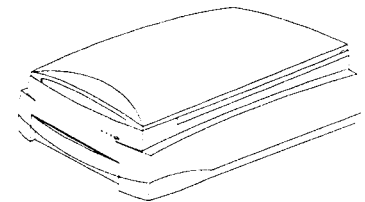
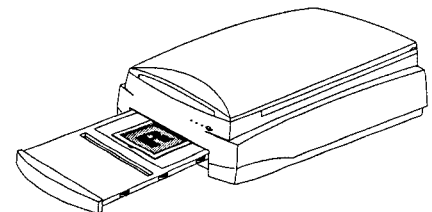
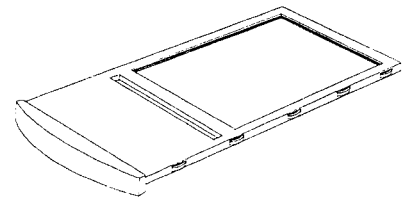
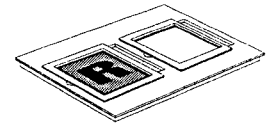


Using the 4" x 5" Film Template

1. Push to open the 4" x 5" Film Template.
2. Place the films to be scanned in 4" x 5" Film Template.
3. Pull to close the template.



4. Place the 4" x 5" Film Template in the Main Staging Template, then put this assembly in the transparency tray of the scanner.



Note: When the installation is done, you can refer to a separate printed document (*Installing and Getting Started* or *Step-by-Step Tutorial*) included in your scanner package for a more detailed scanning procedures.

Federal Communications Commission Interference Statement

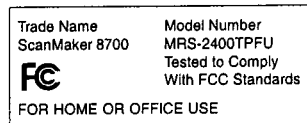
This equipment has been tested and found to comply with the limits for a Class B digital device, pursuant to Part 15 of the FCC rules. These limits are designed to provide reasonable protection against harmful interference in a residential installation. This equipment generates, uses and can radiate radio frequency energy and, if not installed and used in accordance with the instructions, may cause harmful interference to radio communications. However, there is no guarantee that interference will not occur in a particular installation. If this equipment does cause harmful interference to radio or television reception, which can be determined by turning the equipment off and on, the user is encouraged to try to correct the interference by one or more of the following measures:

- Reorient or relocate the receiving antenna.
- Increase the separation between the equipment and receiver.
- Connect the equipment into an outlet on a circuit different from that to which the receiver is connected.
- Consult the dealer or an experienced radio/TV technician for help.

FCC Caution: To assure continued compliance, (example - use only shielded interface cables when connecting to computer or peripheral devices). Any changes or modifications not expressly approved by the party responsible for compliance could void the user's authority to operate this equipment.

This device complies with Part 15 of the FCC Rules. Operation is subject to the following two conditions: (1) This device may not cause harmful interference, and (2) this device must accept any interference received, including interference that may cause undesired operation.

Responsible Party: Loi Han
3715 Doolittle Drive
Redondo Beach, CA 90278-1226
U.S.A.
Telephone No: 1-310-297-5000



Federal Communications Commission Interference Statement

This equipment (Model: MRS-2400TPFU) has been tested and found to comply with the limits for a Class B digital device, pursuant to Part 15 of the FCC Rules. These limits are designed to provide reasonable protection against harmful interference in a residential installation. This equipment generates, uses and can radiate radio frequency energy and, if not installed and used in accordance with the instructions, may cause harmful interference to radio communications. However, there is no guarantee that interference will not occur in a particular installation. If this equipment does cause harmful interference to radio or television reception, which can be determined by turning the equipment off and on, the user is encouraged to try to correct the interference by one or more of the following measures:

- Reorient or relocate the receiving antenna.
- Increase the separation between the equipment and receiver.
- Connect the equipment into an outlet on a circuit different from that to which the receiver is connected.
- Consult the dealer or an experienced radio/TV technician for help.

Note: 1) A shielded of USB interface cable with ferrite core installed on the scanner connector end must be used with this equipment. 2) AC adapter with ferrite core installed on the scanner connector end must be used with this equipment.

Caution: Changes or modifications not expressly approved by the manufacturer responsible for compliance could void the user's authority to operate the equipment.

FCC ID: EF9MRS-2400TPFU

ScanMaker 8700 Specifications

Scanning Modes	Color, grayscale and black & white in a single scanning pass 42-Bit Color input and output (approx. 4.3 trillion colors) 14-Bit Grayscale (approx. 16,384 shades of gray) 1-Bit Black & White (64 shades of gray simulated) Halftone Selections 12 built-in halftone patterns
Scanning area	8.5" x 14" / 216 mm x 356 mm (reflective) 8" x 10" / 203 mm x 254 mm (transparency)
Resolution	Optical: 2400 dpi x 1200 dpi Interpolated: 9600 dpi x 9600 dpi
Dimensions (L x W x H)	24" x 15.2" x 7" (620 mm x 386 mm x 177 mm)
Weight	25.5 lbs / 11.6 kg
Voltage	AC 100V to 240V 47-63 Hz
Environment	Operating Temperature: 10° to 40°C (50° to 104°F) Relative Humidity: 20% to 85%
1394 signal cable	A ferrite cord bonded