

# Microtek Scanner Installation Guide for the ScanMaker® series

**SCSI** 

**Version**  
for PC (Windows® 95/98/NT4.0)  
& Mac (OS 8.1 or later)

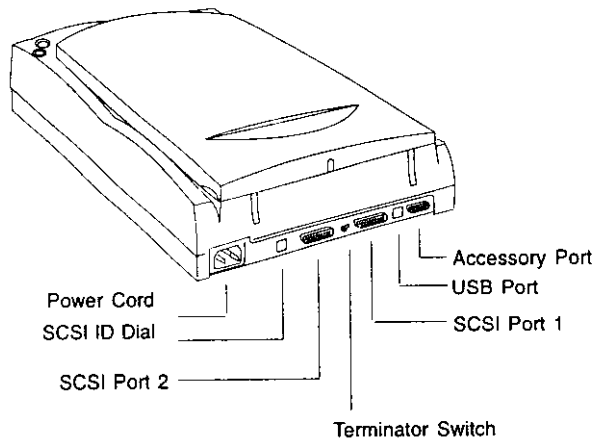
This document provides information on how to install your Microtek scanner on a PC or Mac using the scanner's SCSI interface. For PC SCSI installation, see pages 1 to 5. For Mac SCSI installation, see pages 6 to 8.

## SCSI Installation on the PC


### 1. Unpack scanner

Open your scanner package and check the components as stated in your packing list. You should install software first, then install hardware. Before proceeding any further, check that you have the items listed on the packing list. If any item is missing, contact Microtek.

Your Microtek ScanMaker scanner comes with two built-in interfaces: SCSI and USB. To operate your scanner, you may choose either, not both, interface. See the graphic below to locate the different ports on the back of the scanner, as well as the SCSI ID dial and the scanner accessory port.



**Energy Star Notice**



As an ENERGY STAR Partner, Microtek International, Inc. has determined that this scanner meets the ENERGY STAR guidelines for energy efficiency.

*Note: Make sure the SCSI ID number for your scanner, which is preset to 6, does not conflict with the SCSI IDs of the other devices on your SCSI chain. If you need to change the SCSI ID on your scanner, turn the dial and choose a SCSI ID number from 0 to 6 (do not use 7, 8, or 9).*

## SCSI Installation on the PC

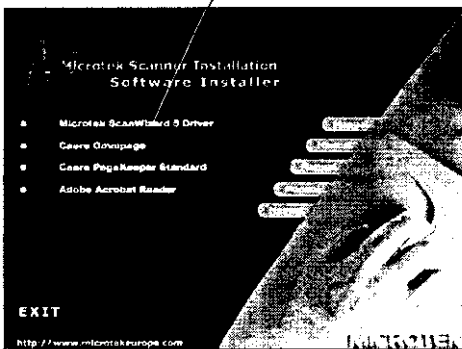
### 2. Install software

1. Turn on your computer. If you are using Windows NT 4.0, log in as "Administrator" in order to install the software.
2. Insert the Microtek CD-ROM into your CD-ROM drive. The Microtek Software Installer screen should automatically come up.

*Note: If the Microtek Software Installer screen does not come up automatically, double-click "My Computer" on your Windows desktop, then double-click the CD-ROM icon to start the installer program.*

3. When the Microtek Software Installer screen appears, click on each software program in the order that it appears on the screen to install all software components.

Click software on the list to install.



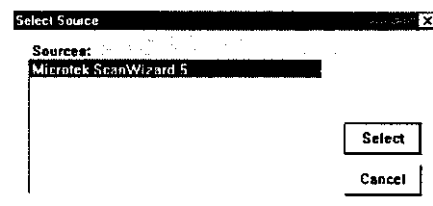
For each software, follow the on-screen instructions during installation. Default values are specified at every point during installation; simply accept these values to continue installation until you finish.

In some applications, auxiliary information (such as the Readme file) may be displayed after that particular program finishes installing. Simply click the "X" close box at the upper right corner of the displayed window to return to the Microtek Software Installer. Do not restart your computer until all the software has been installed.

- a) **Microtek ScanWizard 5.** This is your scanner controller program for capturing images from your scanner and delivering it to your image-editing application. Follow the on-screen instructions during installation. After ScanWizard 5 finishes installing, you will be prompted to restart your computer. Select **No** to continue installing the rest of the software.

- b) **Caere PageKeeper Standard.** This is your document management program.

- c) **Caere OmniPage Limited Edition,** your OCR text-scanning software: During installation of OmniPage Limited Edition, you will be asked to select your "Source". Make sure **Microtek ScanWizard 5** is selected. At the end of installing OmniPage Limited Edition, select "No, I will restart my computer later" (not "Restart your computer").



- d) **Adobe Acrobat Reader.** This is your documentation reader for reading and printing the manuals on the CD-ROM.

4. After all the software has been installed, click **EXIT** at the bottom left of the Microtek Software Installer screen.


## SCSI Installation on the PC

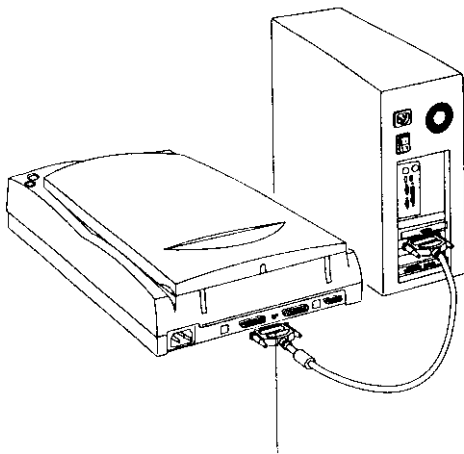
### 3. Connect scanner

1. Turn off your computer.

*Note: Before performing the next step, you must have an ASPI-compliant SCSI interface card already installed in your computer and working properly. If you need help in setting up the ASPI-compliant SCSI interface card in your computer, please view the digital file (Installation\_SCSI.pdf) in the tech-info folder on your Microtek CD-ROM.*

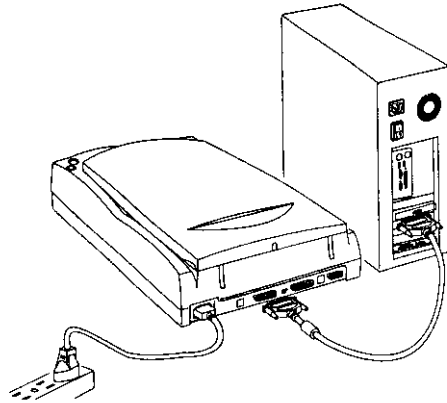
2. Connect the SCSI cable from one of the scanner's SCSI ports to the SCSI interface card on the back of your computer. Then set the terminator switch to the "ON" position.

**Important:** Make sure you connect to the SCSI card on the back of your computer — not to the parallel printer port. The SCSI port may be indicated by this symbol: 

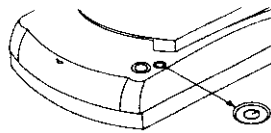


ON OFF

3. Plug the power cord into the back of the scanner, and plug the other end into a wall outlet or power source.



4. Press the scanner's power button, this will turn on the scanner. The green light on the front of the scanner will blink for a few seconds and then stay on solid.



**Power button**

Press the scanner's power button to turn on/off the scanner.

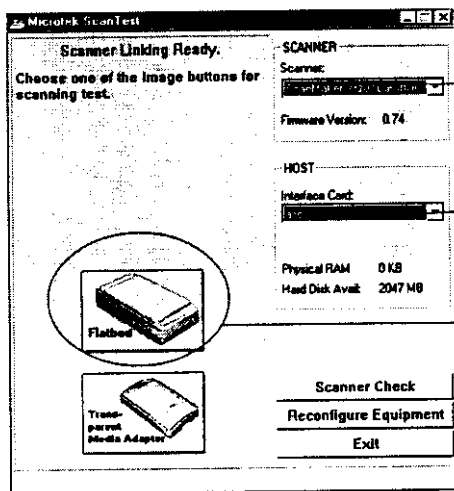
5. Turn on your computer. The system will find your scanner automatically.

## SCSI Installation on the PC

### 4. Test your scanner

1. Click Start, Settings, and select **Control Panel**. Double-click the **System** icon in Control Panel, then select **Device Manager** from the top.
2. Double-click **Imaging Device** or **Microtek Scanners**. Verify that your scanner is listed here. Click "OK" to close all dialog boxes.
3. In Windows, go to "Start, Programs, Microtek ScanWizard 5 for Windows", and select **Scanner Test**. When started successfully, the screen below appears.
4. Place your document with faced down on the scanner glass, and click on the **Flatbed** button.

Top of document faces front of the scanner.



Detected scanner

Detected Interface

Click the "Flatbed" button to preview

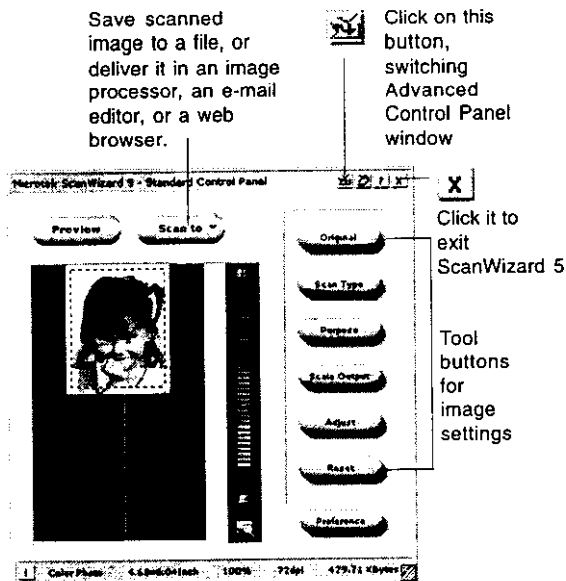
5. A preview of your image will be displayed in the Microtek ScanTest window. Click **OK**, and exit Microtek ScanTest; you are now ready to scan.

If trouble happens in the proceeding scan test, see the digital file (*Troubleshooting\_SCSI.pdf*) in the *Techinfo* folder on your Microtek CD-ROM.

## SCSI Installation on the PC

### 5. Scanning an Image

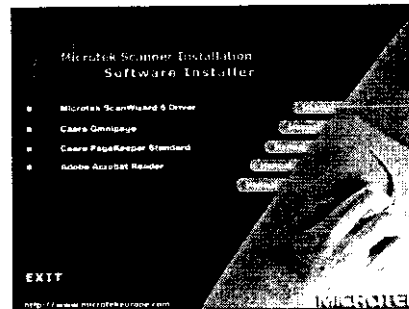
1. Place the image to be scanned on your scanner.
2. Press the scanner's push button, or double-click ScanWizard 5 icon on the desktop to launch ScanWizard 5.
3. When ScanWizard 5 is launched, it automatically performs a pre-scan on the material and places it in the preview area.
4. In preview window, you can resize the floating dotted line around the image by dragging on the edges or corners of the frame to determine the final size of the actual scan.
5. Make adjustments using tool buttons, then click the **Scan to** button. The image is then scanned and save to a file. Other than file saving, you may also choose to deliver saved image to an image-editing software, an e-mail editor, or a web browser.



Resize dotted line for size of the actual scan

### 6. Reading the documentation

1. Insert the Microtek CD-ROM into your CD-ROM drive.
2. When the Microtek Software Installer comes up on your screen, click the **Manual** check box that corresponds to the manual you wish to read. This will launch Adobe Acrobat Reader, and you can then read or print the manual.



Click the "Manual" button to see the manuals

### 7. Troubleshooting

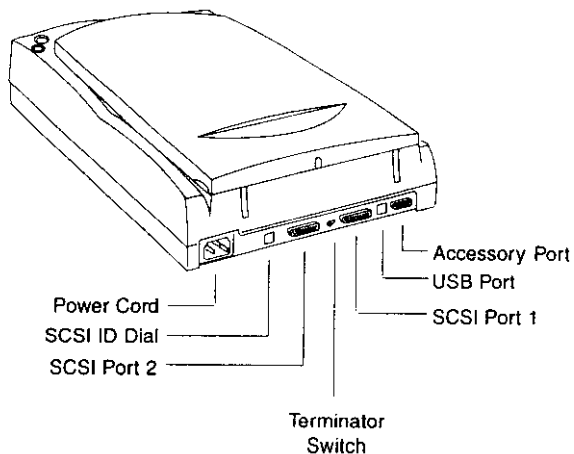
You might encounter problems on the software and hardware installation. To solve the problems, see the digital file (*Troubleshooting\_SCSI.pdf*) in the *Techinfo* folder on your Microtek CD-ROM.

## SCSI Installation on the Macintosh

### 1. Unpack scanner

Open your scanner package and check the components as stated in your packing list. You should install software first, then install hardware. Before proceeding any further, check that you have the items listed on the packing list. If any item is missing, contact Microtek.

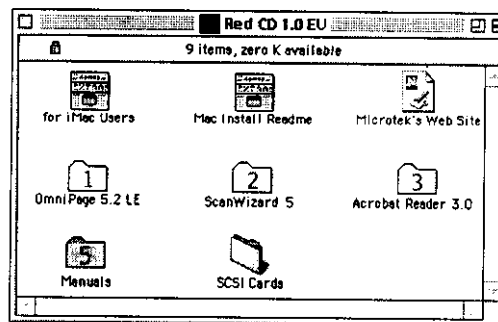
Your Microtek ScanMaker scanner comes with two built-in interfaces: SCSI and USB. To operate your scanner, you may choose either, not both, interface. See the graphic below to locate the different ports on the back of the scanner, as well as the SCSI ID dial and the scanner accessory port.



*Note: Make sure the SCSI ID number for your scanner, which is preset to 6, does not conflict with the SCSI IDs of the other devices on your SCSI chain. If you need to change the SCSI ID on your scanner, turn the dial and choose a SCSI ID number from 0 to 6 (do not use 7, 8 or 9).*

### 2. Install software

1. Turn on your computer.
2. Install the image-editing application that came with your scanner.
3. Insert the Microtek CD-ROM into your CD-ROM drive, and double-click the CD-ROM when it appears on your Macintosh desktop to open it.



4. Install the software on your Microtek CD-ROM, including the following:
  - **Microtek ScanWizard 5.** This is your scanner controller program for capturing images from your scanner and delivering it to your image-editing application.
  - **Caere OmniPage Limited Edition.** This is your OCR text-scanning software.
  - **Adobe Acrobat Reader.** This is your documentation reader for reading and printing the manuals on the CD-ROM.

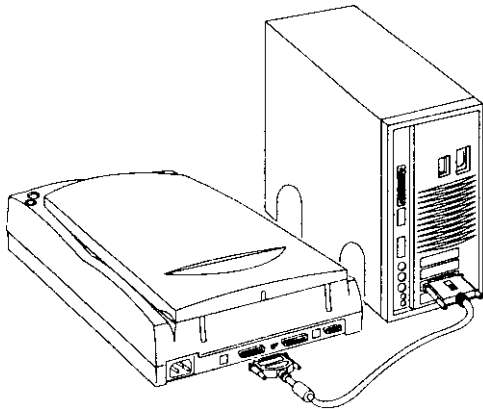
To install each software, open the software program's folder and then click the "Installer" icon in that program's folder. Follow the on-screen instructions until installation is completed.

# SCSI Installation on the Macintosh

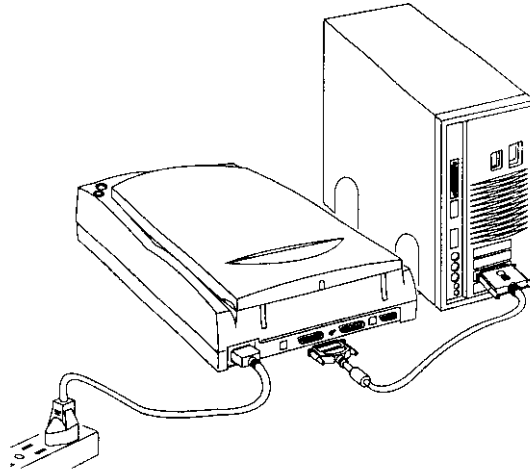
## 3. Connect scanner

1. Turn off your computer.
2. Get the SCSI cable. Connect one end of the SCSI cable to your computer, and connect the other end of the cable to the SCSI port on the scanner. Then set the terminator switch to the "ON" position.

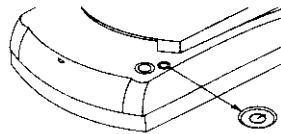
*Note: If your computer is a Power Mac G3, you must have an ASPI-compliant SCSI card already installed in your computer and working properly before connecting. If you need help in setting up the ASPI-compliant SCSI interface card in your computer, please view the digital file (Troubleshooting\_G3.pdf) in the Techinfo folder on your Microtek CD-ROM.*



3. Plug the power cord into the back of the scanner, and plug the other end into a wall outlet or power source.



4. Press the scanner's power button, this will turn on the scanner. The green light on the front of the scanner will blink for a few seconds and then stay on solid.



**Power button**  
Press the scanner's power button to turn on/off the scanner.

5. Turn on your computer. The scanner can be found by the system automatically.

# SCSI Installation on the Macintosh

## 4. Scanning an image

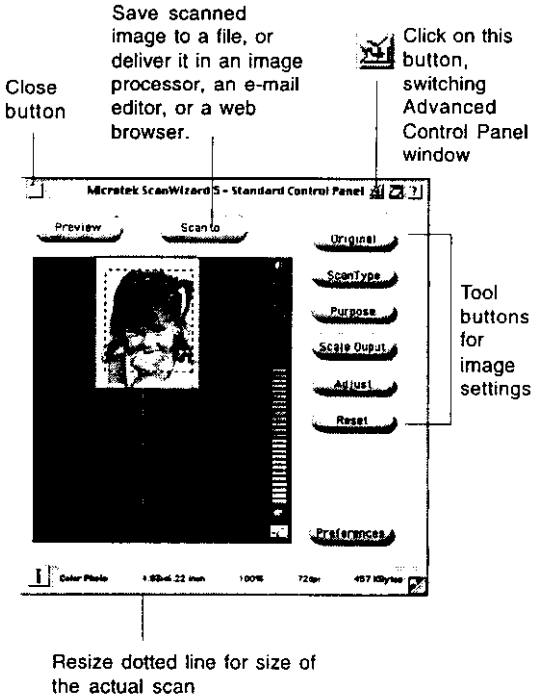
1. Place the image to be scanned on your scanner.
2. Press the scanner's push button to launch ScanWizard 5.
3. When ScanWizard 5 is launched, it automatically performs a pre-scan on the material and place it in the preview area.
4. In preview window, you can resize the floating dotted line around the image by dragging on the edges or corners of the frame to determine the final size of the actual scan.
5. Make adjustments using tool buttons, then click the **Scan to** button. The image is then scanned and save to a file. Other than file saving, you may also choose to deliver saved image to an image-editing software, an e-mail editor, or a web browser.

## 5. Reading the documentation

1. Insert the Microtek CD-ROM into your CD-ROM drive.
2. Launch the Adobe Acrobat Reader program. From the File menu, choose the **Open** command, and open the manual file you wish to view; manuals have a *.pdf* extension to their file name. The manual is then ready to be viewed or printed.

## 6. Troubleshooting

You might encounter problems on the software and hardware installation. To solve the problems, see the digital file (*Troubleshooting\_SCSI.pdf*) in the *Techinfo* folder on your Microtek CD-ROM.





## Specifications

Media	Reflective color or black-and-white originals.
Image Sensor	Linear array CCD with daylight fluorescent lamp.
Scanning Modes	Single scanning pass; 42-bit color; 14-bit grayscale; 1-bit black and white; 12 built-in halftones.
Scanning area	8.5" x 14"/215.9 mm x 355.6 mm (Legal paper size)
Resolution	Optical resolution: 1200 dpi x 2400 dpi Interpolated resolution: Unlimited
Image Controls Brightness Settings	From -100% to +100% in 1% increment.
Contrast Settings	From -42% to +49% in 7% increments.
Exposure Time Selections	From 0% to +512% in 2% increments.
Resolution Settings	From 1 dpi to 800 dpi in 1-dpi increment
Scanning Speed	5 milliseconds per line for line-art, halftone; 10 milliseconds per line for gray; 20 milliseconds per line for color (speed measured at 400 dpi).
Voltage	AC 100V to 240V
Power Consumption	AC 100V to 240V: 1.5A Max.; 47 to 63 Hz; 40 watts
Dimensions (L x W X H)	21.4" x 11.9" x 2.8" (544.5 mm x 302.4 mm x 70 mm)
Weight	12.1 LBS/5.5 KG
Environment	Operating temperature: 10° to 40°C (50° to 104°F) Relative humidity: 20% to 85%

FCC ID: EF9MRS-2400X12US

## **Federal Communications Commission (FCC) Statement**

This equipment (Trade name: ScanMaker X12USL, Model name: MRS-2400X12US) has been tested and found to comply with the limits for a Class B digital device, pursuant to Part 15 of the FCC Rules. These limits are designed to provide reasonable protection against harmful interference in a residential installation. This equipment generates, uses and can radiate radio frequency energy and, if not installed and used in accordance with the instructions, may cause harmful interference to radio communications. However, there is no guarantee that interference will not occur in a particular installation. If this equipment does cause harmful interference to radio or television reception, which can be determined by turning the equipment off and on, the user is encouraged to try to correct the interference by one or more of the following measures:

- Reorient/relocate the receiving antenna.
- Increase the separation between the equipment and receiver.
- Connect the equipment into an outlet on a circuit different from that to which the receiver is connected.
- Consult the dealer or an experienced radio/TV technician for help.

*Note: A shielded interface cable with ferrite core installed on scanner connector end must be used with this equipment.*

### **CAUTION**

Changes or modifications not expressly approved by the manufacturer responsible for compliance could void the user's authority to operate the equipment.

# Microtek Scanner Installation Guide for the ScanMaker® series



**Version**  
for PC (Windows98)  
& Mac (Apple iMac / G3 with  
built-in USB ports)

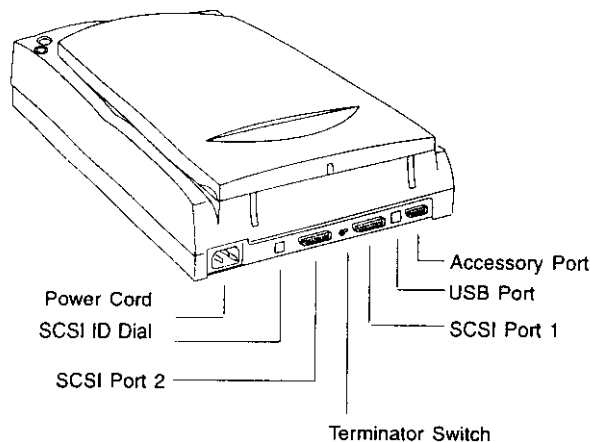
This document provides information on how to install your Microtek scanner on a PC or Mac using the scanner's Universal Serial Bus (USB) interface. For PC USB installation, see pages 1 to 5. For Mac USB installation, see pages 6 to 8.

## USB Installation on the PC


### 1. Unpack scanner

Open your scanner package and check the components as stated in your packing list. You should install software first, then install hardware. Before proceeding any further, check that you have the items listed on the packing list. If any item is missing, contact Microtek.

Your Microtek ScanMaker scanner comes with two built-in interfaces: SCSI and USB. To operate your scanner, you may choose either, not both, interface. See the graphic below to locate the different ports on the back of the scanner, including the scanner accessory port.



**Energy Star Notice**



As an ENERGY STAR Partner, Microtek International, Inc. has determined that this scanner meets the ENERGY STAR guidelines for energy efficiency.

## USB Installation on the PC

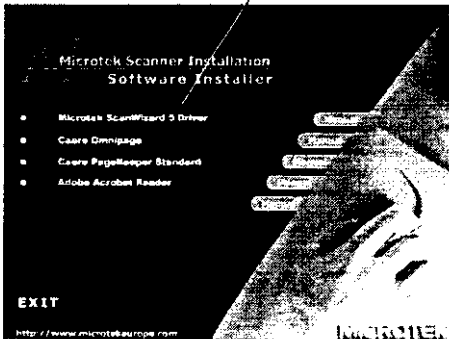
### 2. Install software

1. Turn on your computer.
2. Insert the Microtek CD-ROM into your CD-ROM drive. The Microtek Software Installer screen should automatically come up.

*Note: If the Microtek Software Installer screen does not come up automatically, double-click "My Computer" on your Windows desktop, then double-click the CD-ROM icon to start the installer program.*

3. When the Microtek Software Installer screen appears, click on each software program in the order that it appears on the screen to install all software components.

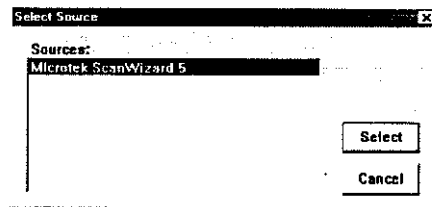
Click software on the list to install.



For each software, follow the on-screen instructions during installation. Default values are specified at every point during installation; simply accept these values to continue installation until you finish.

In some applications, auxiliary information (such as the Readme file) may be displayed after that particular program finishes installing. Simply click the "X" close box at the upper right corner of the displayed window to return to the Microtek Software Installer. Do not restart your computer until all the software has been installed.

- a) **Microtek ScanWizard 5.** This is your scanner controller program for capturing images from your scanner and delivering it to your image-editing application. Follow the on-screen instructions during installation. After ScanWizard 5 finishes installing, you will be prompted to restart your computer. Select **No** to continue installing the rest of the software.
- b) **Caere PageKeeper Standard.** This is your document management program.
- c) **Caere OmniPage Limited Edition,** your OCR text-scanning software: During installation of OmniPage Limited Edition, you will be asked to select your "Source". Make sure **Microtek ScanWizard 5** is selected. At the end of installing OmniPage Limited Edition, select "No, I will restart my computer later" (not "Restart your computer").

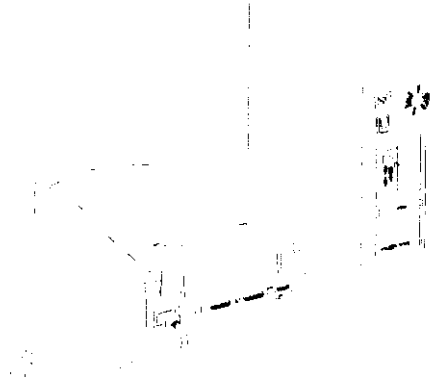
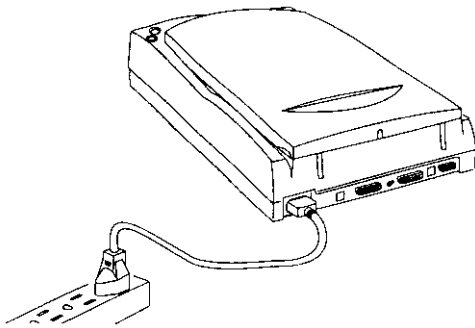


- d) **Adobe Acrobat Reader.** This is your documentation reader for reading and printing the manuals on the CD-ROM.
4. After all the software has been installed, click **EXIT** at the bottom left of the Microtek Software Installer screen.

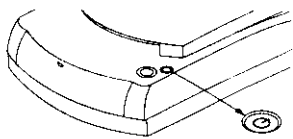
## USB Installation on the PC

### 3. Connect scanner

1. Turn off your computer.
2. Plug the power cord into the back of the scanner, and plug the other end into a wall outlet or power source. **Make sure no other cable is connected to the scanner except the power cord at this point.**
4. Connect one end of the USB cable to your computer, and connect the other end of the cable to the scanner's USB port.



3. Press the scanner's power button, this will turn on the scanner. The green light on the front of the scanner will blink for a few seconds and then stay on solid.
5. Turn on your computer. The system will find your scanner automatically.

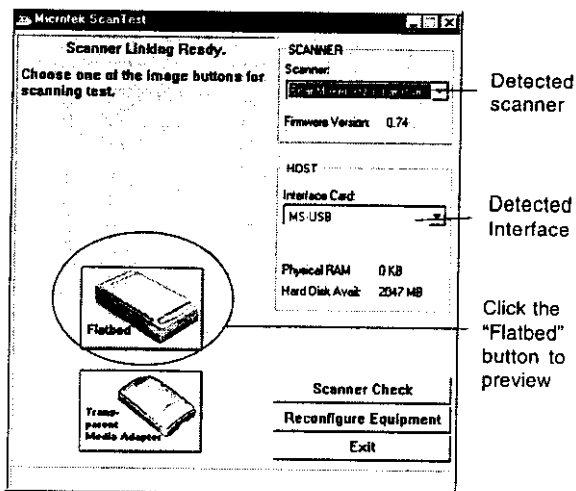


**Power button**  
Press the scanner's power button to turn on/off the scanner.

## USB Installation on the PC

### 4. Test your scanner

1. Click Start, Settings, and select **Control Panel**. Double-click the **System** icon in Control Panel, then select **Device Manager** from the top.
2. Double-click **Imaging Device** or **Microtek Scanners**. Verify that your scanner is listed here. Click "OK" to close all dialog boxes.
3. In Windows, go to "Start, Programs, Microtek ScanWizard 5 for Windows", and select **Scanner Test**. When started successfully, the screen below appears.



4. Place your document with faced down on the scanner glass, and click on the **Flatbed** button.

Top of document  
faces front of the  
scanner.

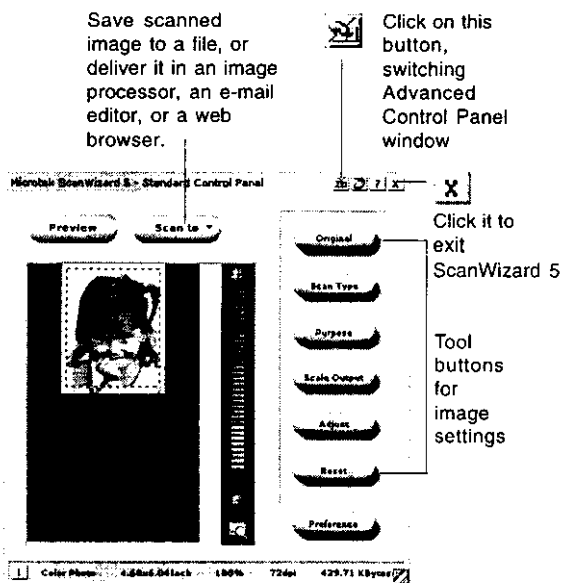
5. A preview of your image will be displayed in the Microtek ScanTest window. Click **OK**, and exit Microtek ScanTest; you are now ready to scan.

If trouble happens in the proceeding scan test, see the digital file (*Troubleshooting\_USB.pdf*) in the *Techinfo* folder on your Microtek CD-ROM.

## USB Installation on the PC

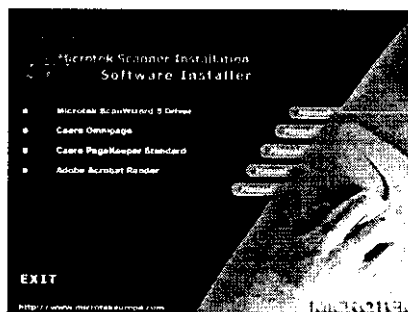
### 5. Scanning an Image

1. Place the image to be scanned on your scanner.
2. Press the scanner's push button, or double-click ScanWizard 5 icon on the desktop to launch ScanWizard 5.
3. When ScanWizard 5 is launched, it automatically performs a pre-scan on the material and places it in the preview area.
4. In preview window, you can resize the floating dotted line around the image by dragging on the edges or corners of the frame to determine the final size of the actual scan.
5. Make adjustments using tool buttons, then click the **Scan to** button. The image is then scanned and save to a file. Other than file saving, you may also choose to deliver saved image to an image-editing software, an e-mail editor, or a web browser.



### 6. Reading the documentation

1. Insert the Microtek CD-ROM into your CD-ROM drive.
2. When the Microtek Software Installer comes up on your screen, click the **Manual** check box that corresponds to the manual you wish to read. This will launch Adobe Acrobat Reader, and you can then read or print the manual.



Click the "Manual" button to see the manuals

### 7. Troubleshooting

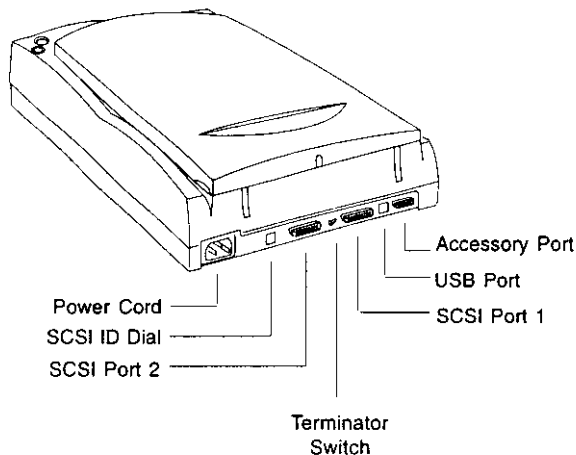
You might encounter problems on the software and hardware installation. To solve the problems, see the digital file (*Troubleshooting\_USB.pdf*) in the *Techinfo* folder on your Microtek CD-ROM.

## USB Installation on the Macintosh

### 1. Unpack scanner

Open your scanner package and check the components as stated in your packing list. You should install software first, then install hardware. Before proceeding any further, check that you have the items listed on the packing list. If any item is missing, call Microtek.

Your Microtek ScanMaker scanner comes with two built-in interfaces: SCSI and USB. To operate your scanner, you may choose either, not both, interface. See the graphic below to locate the different ports on the back of the scanner, including the scanner accessory port.



### 2. Install software

1. Turn on your computer.
2. Install the image-editing application that came with your scanner.
3. Insert the Microtek CD-ROM into your CD-ROM drive, and double-click the CD-ROM when it appears on your Macintosh desktop to open it.

*Note: If you are using an Apple iMac with System 8.1: Install the iMac update driver. To do this, open the iMac update folder, then double-click the Installer icon. When the software license agreement dialog box appears, click the "Agree" button. Another dialog box (Install iMac Update) will appear; click the "Install" button.*

4. Next, install the software on your Microtek CD-ROM, including the following:
  - **Microtek ScanWizard 5.** This is your scanner controller program for capturing images from your scanner and delivering it to your image-editing application.
  - **Caere OmniPage Limited Edition.** This is your OCR text-scanning software.
  - **Adobe Acrobat Reader.** This is your documentation reader for reading and printing the manuals on the CD-ROM.

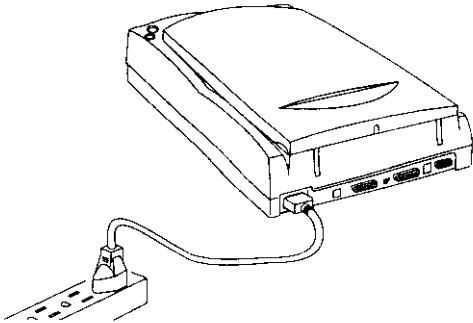
To install each software, open the software program's folder and then click the "Installer" icon in that program's folder. Follow screen instructions until installation is completed. Restart your Macintosh when software installation is done.



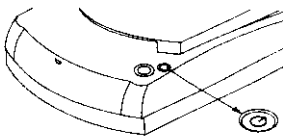
## USB Installation on the Macintosh

### 3. Connect scanner

1. Turn off your computer.
2. Plug the power cord into the back of the scanner, and plug the other end into a wall outlet or power source. **Make sure no other cable is connected to the scanner except the power cord at this point.**



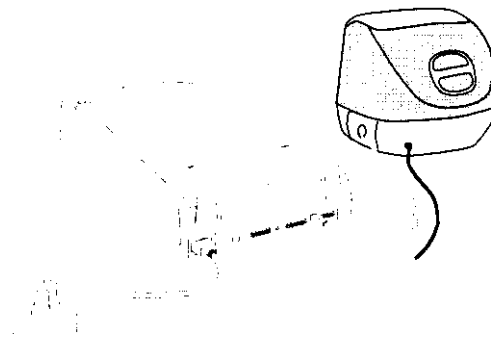
3. Press the scanner's power button, this will turn on the scanner. The green light on the front of the scanner will blink for a few seconds and then stay on solid.



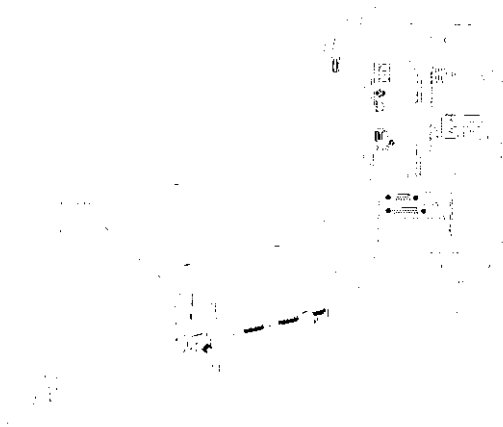
**Power button**  
Press the scanner's power button to turn on/off the scanner.

4. Connect one end of the USB cable to your computer, and connect the other end of the cable to the scanner's USB port.

#### A. Connecting to an Apple iMac



#### B. Connecting to a Power Mac G3 (like the model indicated) with built-in USB ports



5. Turn on your computer. The system will find your scanner automatically.

## USB Installation on the Macintosh

### 4. Scanning an image

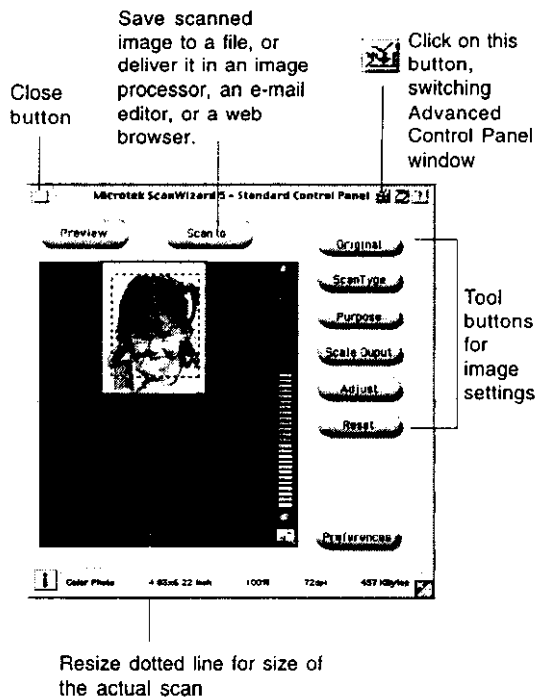
1. Place the image to be scanned on your scanner.
2. Press the scanner's push button to launch ScanWizard 5.
3. When ScanWizard 5 is launched, it automatically performs a pre-scan on the material and places it in the preview area.
4. In preview window, you can resize the floating dotted line around the image by dragging on the edges or corners of the frame to determine the final size of the actual scan.
5. Make adjustments using tool buttons, then click the **Scan to** button. The image is then scanned and save to a file. Other than file saving, you may also choose to deliver saved image to an image-editing software, an e-mail editor, or a web browser.

### 5. Reading the documentation

1. Insert the Microtek CD-ROM into your CD-ROM drive.
2. Launch the Adobe Acrobat Reader program. From the File menu, choose the **Open** command, and open the manual file you wish to view; manuals have a *.pdf* extension to their file name. The manual is then ready to be viewed or printed.

### 6. Troubleshooting

You might encounter problems on the software and hardware installation. To solve the problems, see the digital file (*Troubleshooting\_USB.pdf*) in the *Techinfo* folder on your Microtek CD-ROM.



## Specifications

Media	Reflective color or black-and-white originals.
Image Sensor	Linear array CCD with daylight fluorescent lamp.
Scanning Modes	Single scanning pass; 42-bit color; 14-bit grayscale; 1-bit black and white; 12 built-in halftones.
Scanning area	8.5" x 14"/215.9 mm x 355.6 mm (Legal paper size)
Resolution	Optical resolution: 1200 dpi x 2400 dpi Interpolated resolution: Unlimited
Image Controls Brightness Settings	From -100% to +100% in 1% increment.
Contrast Settings	From -42% to +49% in 7% increments.
Exposure Time Selections	From 0% to +512% in 2% increments.
Resolution Settings	From 1 dpi to 800 dpi in 1-dpi increment
Scanning Speed	5 milliseconds per line for line-art, halftone; 10 milliseconds per line for gray; 20 milliseconds per line for color (speed measured at 400 dpi).
Voltage	AC 100V to 240V
Power Consumption	AC 100V to 240V: 1.5A Max.; 47 to 63 Hz; 40 watts
Dimensions (L x W X H)	21.4" x 11.9" x 2.8" (544.5 mm x 302.4 mm x 70 mm)
Weight	12.1 LBS/5.5 KG
Environment	Operating temperature: 10° to 40°C (50° to 104°F) Relative humidity: 20% to 85%

## **Federal Communications Commission (FCC) Statement**

This equipment (Trade name: ScanMaker X12USL, Model name: MRS-2400X12US) has been tested and found to comply with the limits for a Class B digital device, pursuant to Part 15 of the FCC Rules. These limits are designed to provide reasonable protection against harmful interference in a residential installation. This equipment generates, uses and can radiate radio frequency energy and, if not installed and used in accordance with the instructions, may cause harmful interference to radio communications. However, there is no guarantee that interference will not occur in a particular installation. If this equipment does cause harmful interference to radio or television reception, which can be determined by turning the equipment off and on, the user is encouraged to try to correct the interference by one or more of the following measures:

- Reorient/relocate the receiving antenna.
- Increase the separation between the equipment and receiver.
- Connect the equipment into an outlet on a circuit different from that to which the receiver is connected.
- Consult the dealer or an experienced radio/TV technician for help.

*Note: A shielded interface cable with ferrite core installed on scanner connector end must be used with this equipment.*

### **CAUTION**

Changes or modifications not expressly approved by the manufacturer responsible for compliance could void the user's authority to operate the equipment.