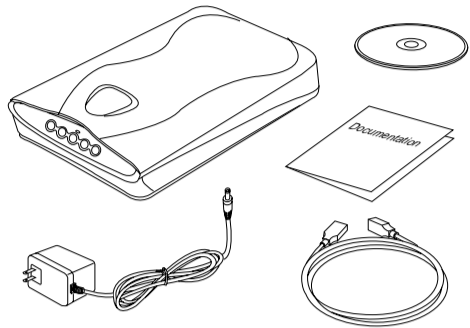


## Installing

### 1

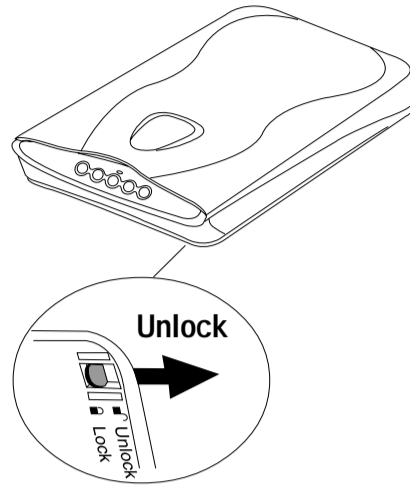


#### Unpack the scanner and check components

Unpack the scanner package and check for major components. Please refer to the enclosed Packing List for a detailed listing of your components.

- Microtek Scanner
- Power Adapter
- USB (Universal Serial Bus) Cable
- Documentation
- Microtek CD-ROM

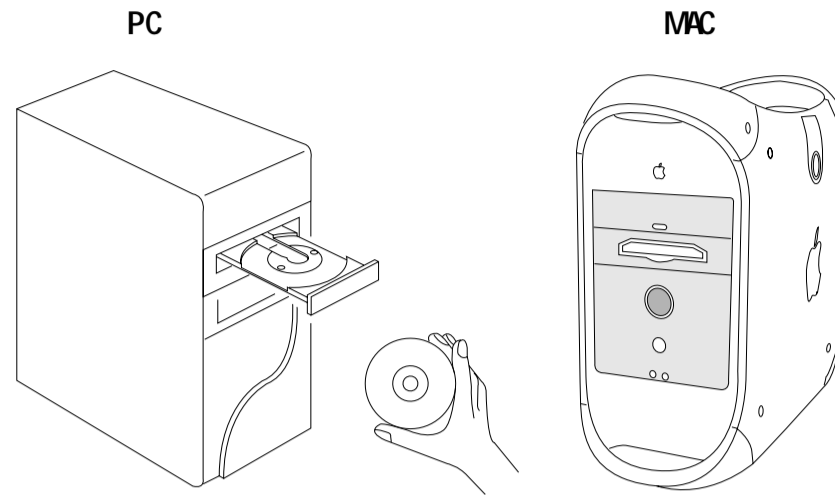
### 2



#### Unlock the scanner carriage

- With the scanner power switched off, lift the scanner front end and locate the carriage safety lock lever (located at the front-right corner of the scanner bottom).
- Slightly slide the lever to the right until you hear a "click", indicating that the scanner carriage has been unlocked.

### 3



#### Install the software

PC:

- Place the Microtek CD-ROM into the CD-ROM drive.
- Follow the on-screen instructions to install the driver and software. Do *not* turn off your computer until all the software has been installed.

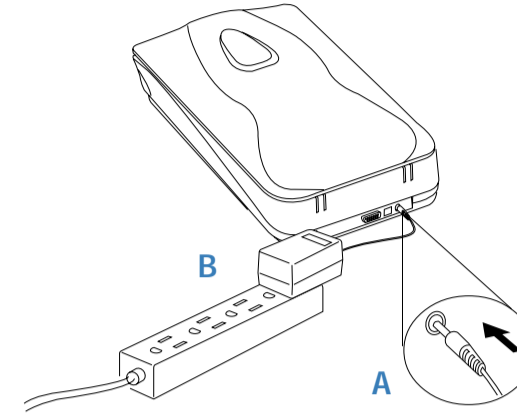
**NOTE:** If the Microtek Software Installer screen does not come up automatically, double-click the following in succession: "My Computer" on your Windows desktop; the CD-ROM icon; then cdsetup.exe to start the installer program.

- Install the image-editing software application that came with your scanner.
- Restart your computer.

MAC:

- Install the image-editing software application that came with your scanner.
- Place the Microtek CD-ROM into the CD-ROM drive and install all the software components.
- Restart your computer.

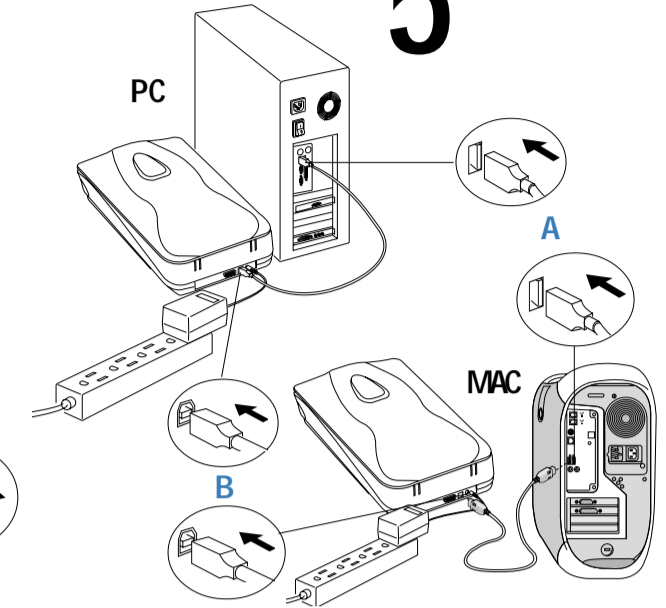
### 4



#### Connect the power adapter to a power source to apply power to scanner

- Connect the power adapter to the back of the scanner.
- Plug the power adapter into a wall outlet or power source and observe the green LED in the front panel lights up.

### 5



#### Connect the USB cable

- Connect the computer end of the USB cable to your computer.
- Connect the other end of the USB cable to the USB port of the scanner.

The system will detect your scanner automatically.

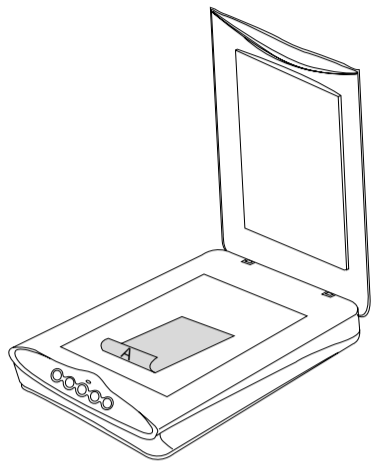
#### Energy Star Notice



As an ENERGY STAR Partner, Microtek International, Inc. has determined that this scanner meets the ENERGY STAR guidelines for energy efficiency.

## Getting Started

6



### Place the scan material

- Place the original to be scanned on the scanner bed.
- The top end of the original should be oriented towards the front end of the scanner with the surface to be scanned facing down.

7

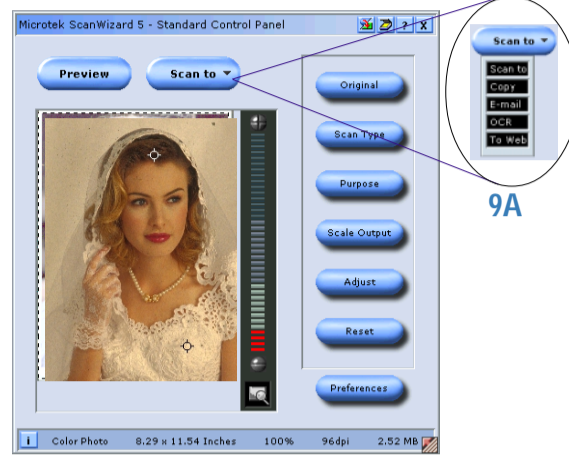


### Launch ScanWizard 5

To launch ScanWizard 5 as a stand-alone program, double-click the ScanWizard 5 icon on your desktop.

By default, the scanner will detect the settings under Original, Scan Type and Purpose; and automatically perform a "fast preview" of your image based on those settings.

8



### Select preferences

You can use the following tool buttons to change the settings according to your preferences.

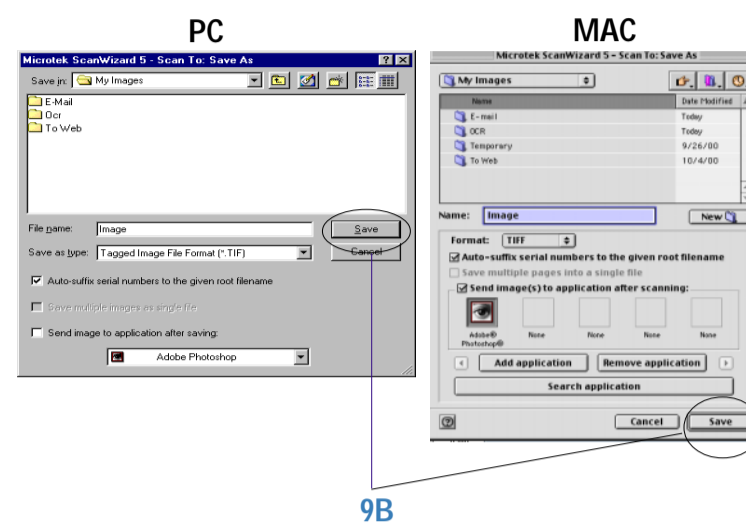
**Original** – defines category of the original (scan material).

**Scan Type** – selects output image type (color, gray, or B&W).

**Purpose** – defines image resolution to match your target application.

**NOTE:** Click the **Scale Output**, **Adjust**, and **Reset** buttons if you need to make further adjustments.

9



### Scan your material

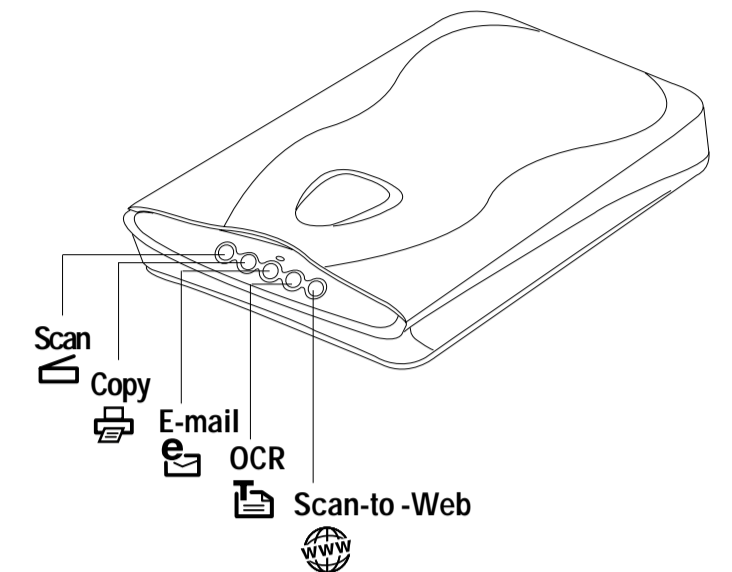
- Click the **Scan to** button from the ScanWizard 5 Control Panel.
- When the **Save As** dialog box appears, specify the folder location, a file name, and the format for the output image, then click **Save**. The image is then scanned and saved to the specified location.

**Send image to application after saving:** If this option is checked, the scanned image is saved first, then automatically delivered to an image-editing software, an e-mail editor, or a web browser as indicated in the destination box.

### Scanner Button Controls

The ScanMaker 3800 is equipped with five scanner buttons providing quick access to the most frequently used functions. These buttons are **Scan**, **Copy**, **E-mail**, **OCR**, and **Scan-to-Web**. The parameters for each button can be set through the Microtek Scanner Configuration (MSC) utility. (Note that you need to exit ScanWizard 5 before accessing the MSC utility).

To launch the MSC utility, you can either: (For PCs) Go through the Windows menu -- click Start, Programs, ScanWizard 5, MSC; or (For PCs or Macs) Double-click the MSC icon on your desktop. When the MSC panel appears, click any of the 5 tabs to specify the Scan settings accordingly. (For detailed information, refer to the online help in the Microtek Scanner Configuration Utility software).



**Scan**  
Captures images that can be saved as files or sent to an image editing application for further processing.

**Copy**  
Scans image and sends it to your printer.

**E-mail**  
Scans the image and delivers it directly to your e-mail editor.

**OCR**  
Scans a text document, convert and saves it as a text file format. File may be immediately edited if configured in the MSC utility.

**Scan-to-Web**  
Scans an image and sends output to a website. It opens your default browser and displays the captured image.

### For More Help...

If you experience problems with installation, refer to the Troubleshooting file in the *TechInfo* folder on your Microtek CD-ROM.

For more information on operating your scanner with ScanWizard 5, launch your Internet browser to further view the software manual (in HTML format). Alternatively, PC users can also view the same manual directly from the Microtek CD-ROM Installer window by simply double-clicking the "View Manual" button.



# Federal Communications Commission Interference Statement

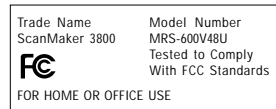
This equipment has been tested and found to comply with the limits for a Class B digital device, pursuant to Part 15 of the FCC rules. These limits are designed to provide reasonable protection against harmful interference in a residential installation. This equipment generates, uses and can radiate radio frequency energy and, if not installed and used in accordance with the instructions, may cause harmful interference to radio communications. However, there is no guarantee that interference will not occur in a particular installation. If this equipment does cause harmful interference to radio or television reception, which can be determined by turning the equipment off and on, the user is encouraged to try to correct the interference by one or more of the following measures:

- Reorient or relocate the receiving antenna.
- Increase the separation between the equipment and receiver.
- Connect the equipment into an outlet on a circuit different from that to which the receiver is connected.
- Consult the dealer or an experienced radio/TV technician for help.

**FCC Caution:** To assure continued compliance, (example - use only shielded interface cables when connecting to computer or peripheral devices). Any changes or modifications not expressly approved by the party responsible for compliance could void the user's authority to operate this equipment.

This device complies with Part 15 of the FCC Rules. Operation is subject to the following two conditions: (1) This device may not cause harmful interference, and (2) this device must accept any interference received, including interference that may cause undesired operation.

Responsible Party:   Loi Han  
3715 Doolittle Drive  
Redondo Beach, CA 90278-1226  
U.S.A.  
Telephone No:        1-310-297-5000



---

# Federal Communications Commission Interference Statement

This equipment (Model: MRS-600V48U) has been tested and found to comply with the limits for a Class B digital device, pursuant to Part 15 of the FCC Rules. These limits are designed to provide reasonable protection against harmful interference in a residential installation. This equipment generates, uses and can radiate radio frequency energy and, if not installed and used in accordance with the instructions, may cause harmful interference to radio communications. However, there is no guarantee that interference will not occur in a particular installation. If this equipment does cause harmful interference to radio or television reception, which can be determined by turning the equipment off and on, the user is encouraged to try to correct the interference by one or more of the following measures:

- Reorient or relocate the receiving antenna.
- Increase the separation between the equipment and receiver.
- Connect the equipment into an outlet on a circuit different from that to which the receiver is connected.
- Consult the dealer or an experienced radio/TV technician for help.

*Note: 1) A shielded of USB interface cable with ferrite core installed on the scanner connector end must be used with this equipment. 2) AC adapter with ferrite core installed on the scanner connector end must be used with this equipment.*

**Caution:** Changes or modifications not expressly approved by the manufacturer responsible for compliance could void the user's authority to operate the equipment.

## MRS-600V48U(ScanMaker 3800) Specifications

Scanning Modes	Color, grayscale and black & white in a single scanning pass 42-bit color input and output (approx. 281 trillion colors) 16-bit grayscale (approx. 65,536 shades of gray)
Scanning area	8.5" x 11.7" (216 mm x 297 mm)
Resolution	Optical: 600 dpi x 1200 dpi Interpolated: 9600 dpi x 9600 dpi
Dimensions (L x W X H)	17.1" x 11.5" x 3.4" (435 mm x 292 mm x 86 mm)
Weight	6 lbs / 2.7 kg
Voltage	AC 100V to 120V (U.S. and Canada) AC 200V to 240V (Europe and other parts) 50-60 Hz
Environment	Operating temperature: 10° to 40°C (50° to 104°F) Relative humidity: 20% to 85%