

PC PROGRAMMER MANUAL

1. INSTALLATION

(1) Insert diskette A into a driver and click Legacy PC Programmer.exe file.

(2) Installation wizard leads how to install the program.

NOTE: You can copy these installation diskettes to hard disk and click Legacy PC Programmer.exe.

(3) After installation is completed, the following will be displayed;

"To complete installation, system must be restarted.

Restart system now?

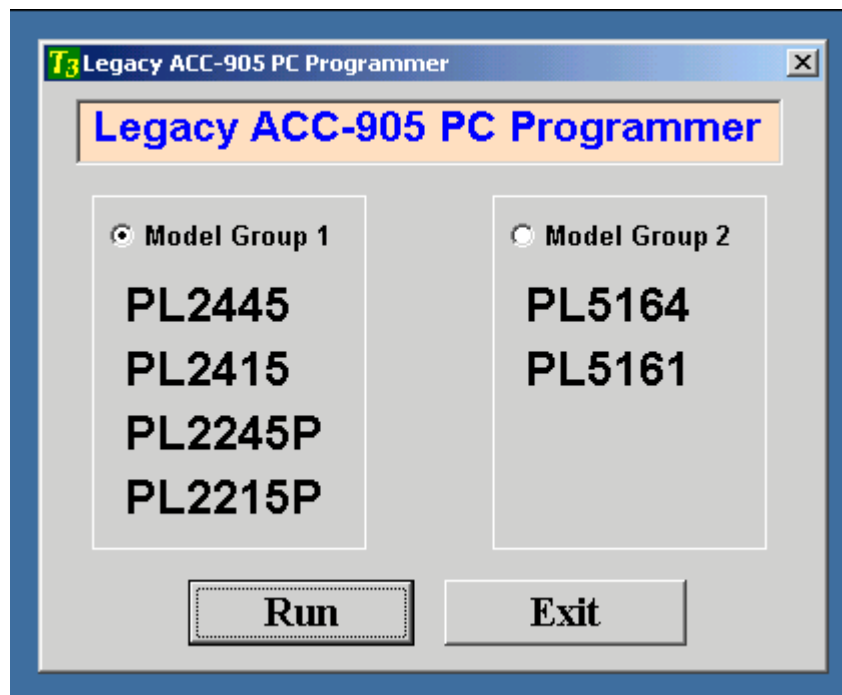
Yes

No"

Then, click yes to complete.

(4) After rebooting the system, "Installation of Legacy ACC-905 Programmer completed" will be shown on the display.

(5) After installation, when the program runs, the following window shows up.

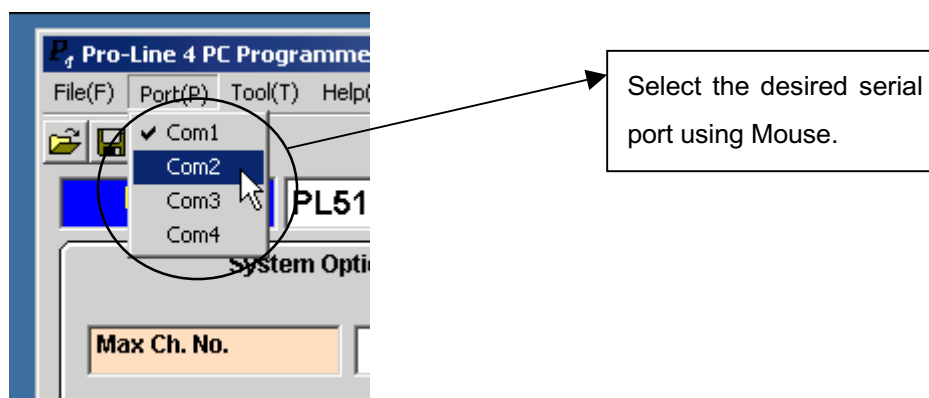


(6) Click the desired model group by mouse and click "Run" button. Then the program

window will show up to start programming.

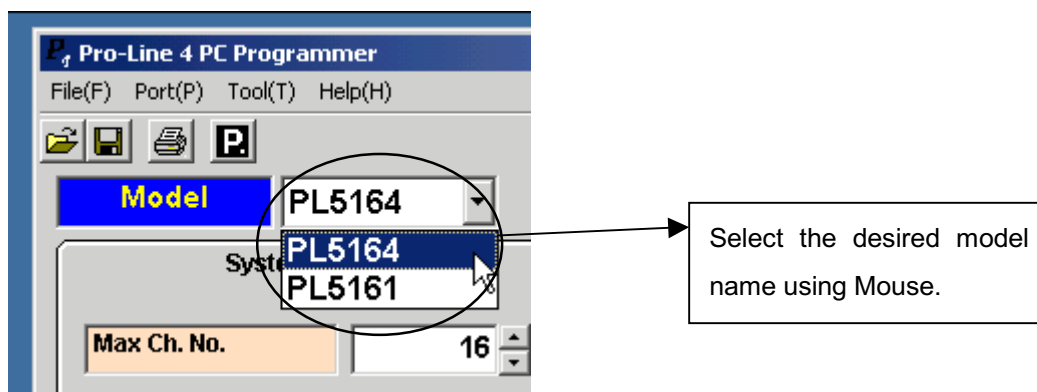
2. SERIAL PORT SETTING

- (1) When PROGRAMMER is executed, SERIAL PORT is set to COM1. If you want to connect the radio with COM2 PORT, you should select COM2 in the menu of Port(P) on the screen as under. (If port is changed, the contents is saved in file (port.txt))



3. RADIO SYSTEM OPTION SETTING

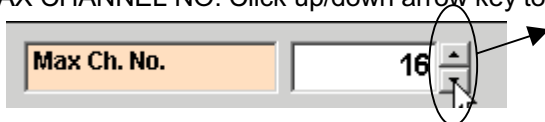
- (1) MODEL SELECTION



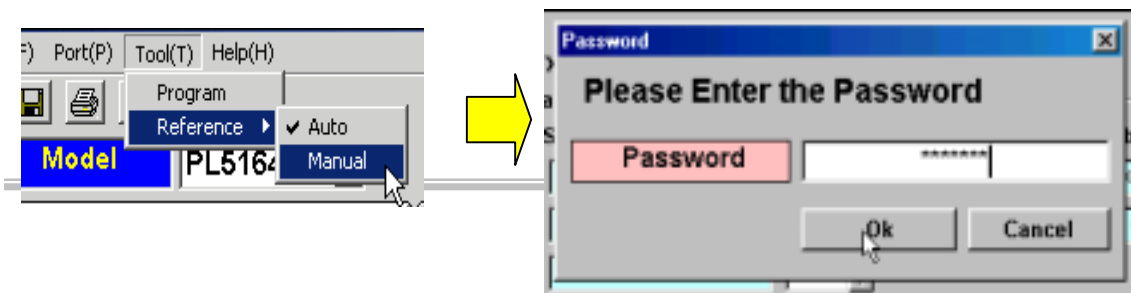
(2) SYSTEM OPTION SELECTION (the display may differ from Model by Model.)



1) MAX CHANNEL NO: Click up/down arrow key to select max channel number.



2) REFERENCE FREQUENCY TYPE SETTING: There are two type, Auto and Manual. This can be selected in Reference of Tool(T) menu by mouse click. When changing the current type, the small window pops up to confirm password. If the correct password is input, the current reference type is changed. (PASSWORD: 1546214)



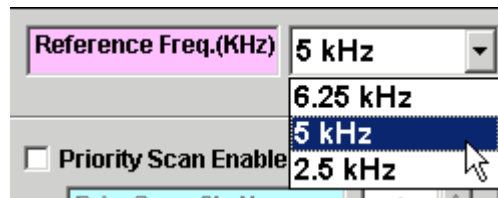
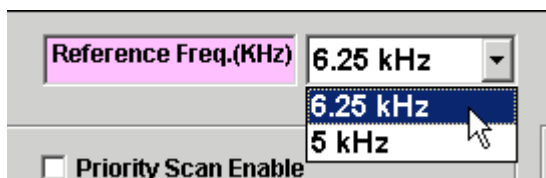
3) AUTO REFERENCE FREQUENCY: In UHF, one of reference out of 6.25kHz/5kHz(In case of VHF 6.25kHz/5kHz/2.5kHz) will be input automatically. If two reference can be used, the higher reference frequency such as 6.25kHz will be set automatically.

In this case, there is no "REFERENCE FREQUENCY SELECT window".

4) MANUAL REFERENCE FREQUENCY: When reference frequency is selected manually,



"REFERENCE FREQUENCY SELECT window" will be displayed. When a reference frequency is selected, it applies to all channels. In case of UHF, the reference can be set either 6.25 or 5kHz. In case of VHF, the reference can be selected either 6.25kHz or 5kHz or 2.5kHz.



NOTE: Setting method of the other setting is same as the above. But if there are arrow keys by input column you cannot input directly but change by clicking the arrow buttons.

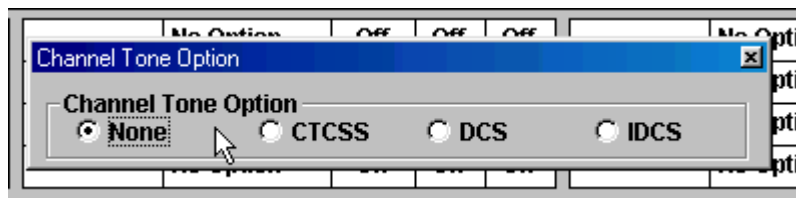
4. RADIO CHANNEL DATA SETTING (The display may differ from model by model.)

(1) Frequency Input

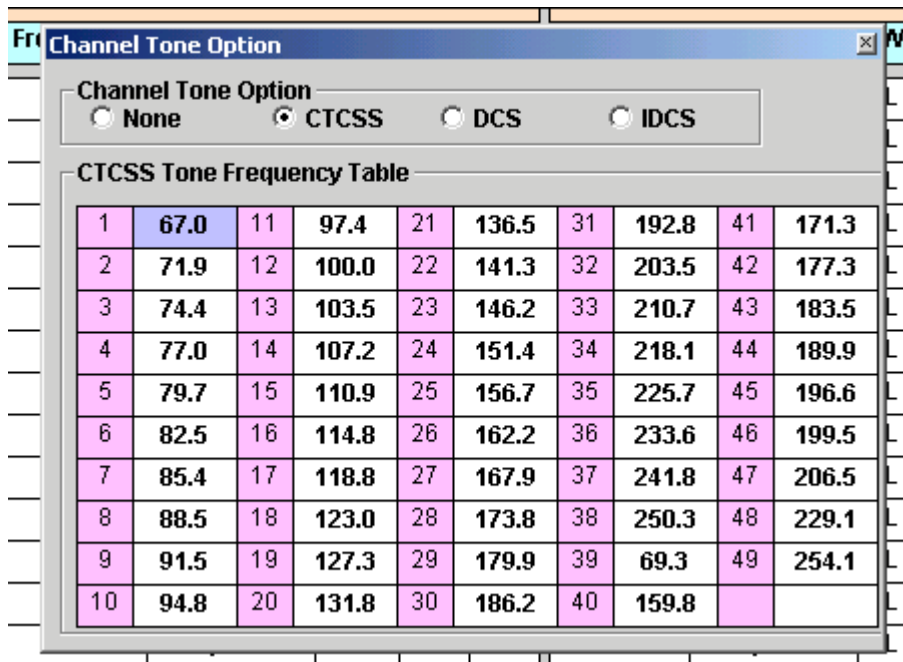
The screenshot shows a software interface with three main sections: System Option, Channel Data, and Two Tone. The Channel Data section contains a table with columns for CH, Name, Freq. (MHz), Tone Option, IND, G, S-G, TX FREQ., TX TONE, PWR, P-SC, SC, and B. The Freq. (MHz) and TX FREQ. columns are circled in red. A callout box with a white background and black border is overlaid on the table, containing the following text:

Press the left button of the Mouse to input or edit the frequency.
 The unit of frequency must be MHz. If the frequency is out of the range in which the selected model has, or character is input, the frequency or character cannot be input and it remains empty. Error Message is displayed.
 You can move to another field by direction keys or tab key or select option field by double click of Mouse or enter key.
 When field is moved by key or mouse the background color of field is changed.

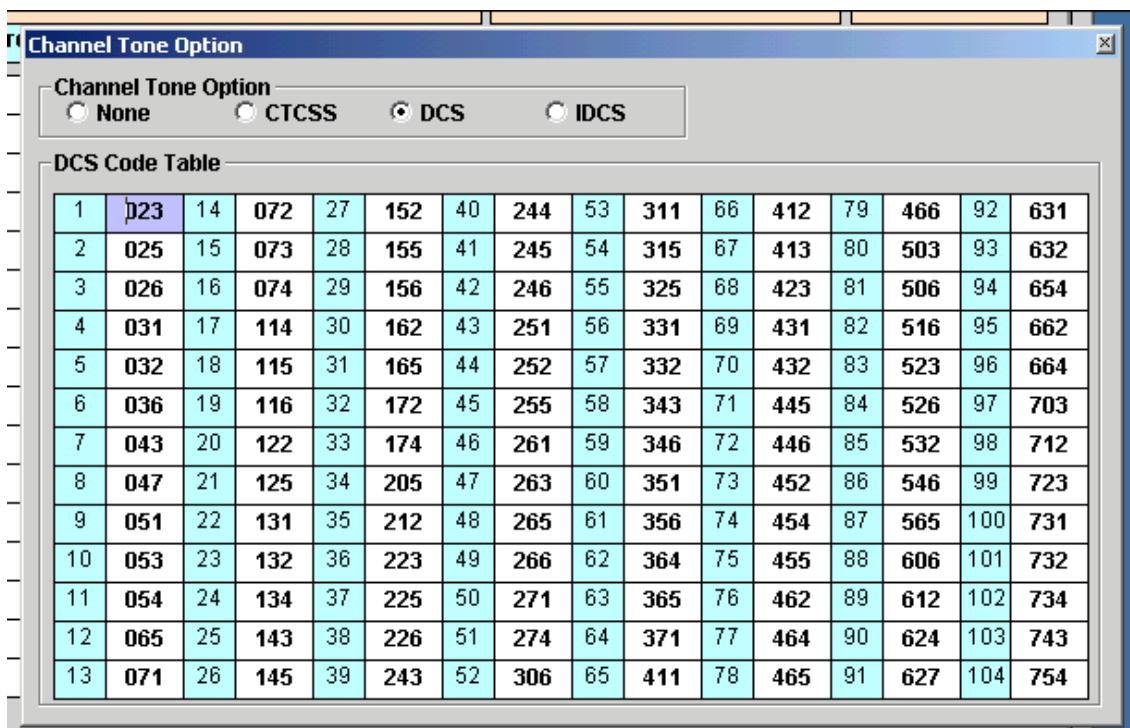
(2) TONE OPTION SETTING



- 1) When tone option column is clicked menu window as the above pops up.
- 2) Click the desired tone option, then the menu window is enlarged as under.



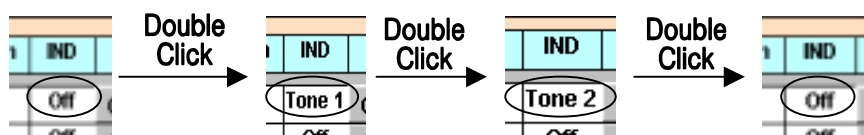
Choose the desired tone data and the tone option window disappear.
You can move to desired tone by direction keys and set by enter key too.



(3) THE OTHER CHANNEL OPTION SETTING

- 1) Place a pointer to option area you want to set and double click.
- 2) Whenever clicked the possible setting option is toggled in turn.

(EXAMPLE- INDIVIDUAL TWO TONE OPTION)



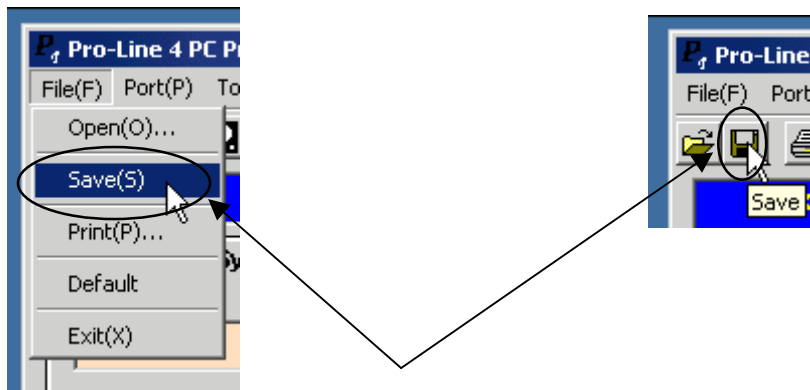
5. TWO TONE OPTION SETTING



- (1) Place a pointer to the desired data display area and click the mouse to edit the data.
- (2) 300Hz to 3000Hz can be input. You can input to a decimal point.
- (3) Each tone duration time can be input by 10msec and if it cannot be divided by 10msec, then it goes to the nearest whole number.

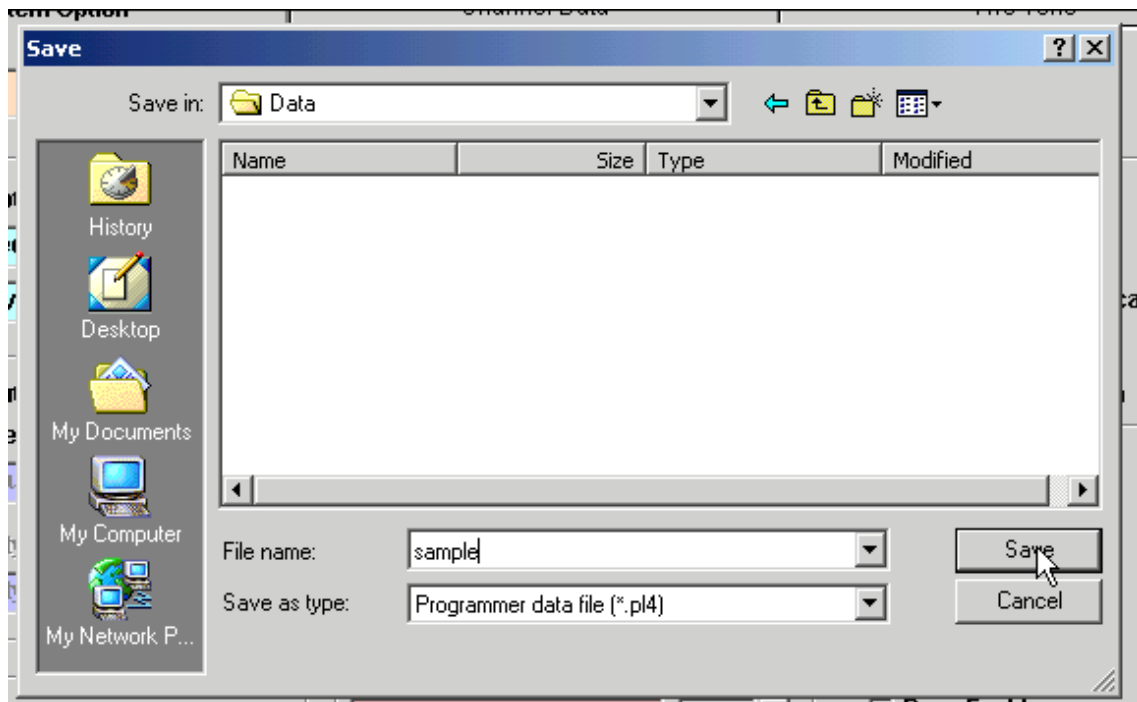
6. SAVE AND OPEN FILES

- (1) SAVE THE FILE



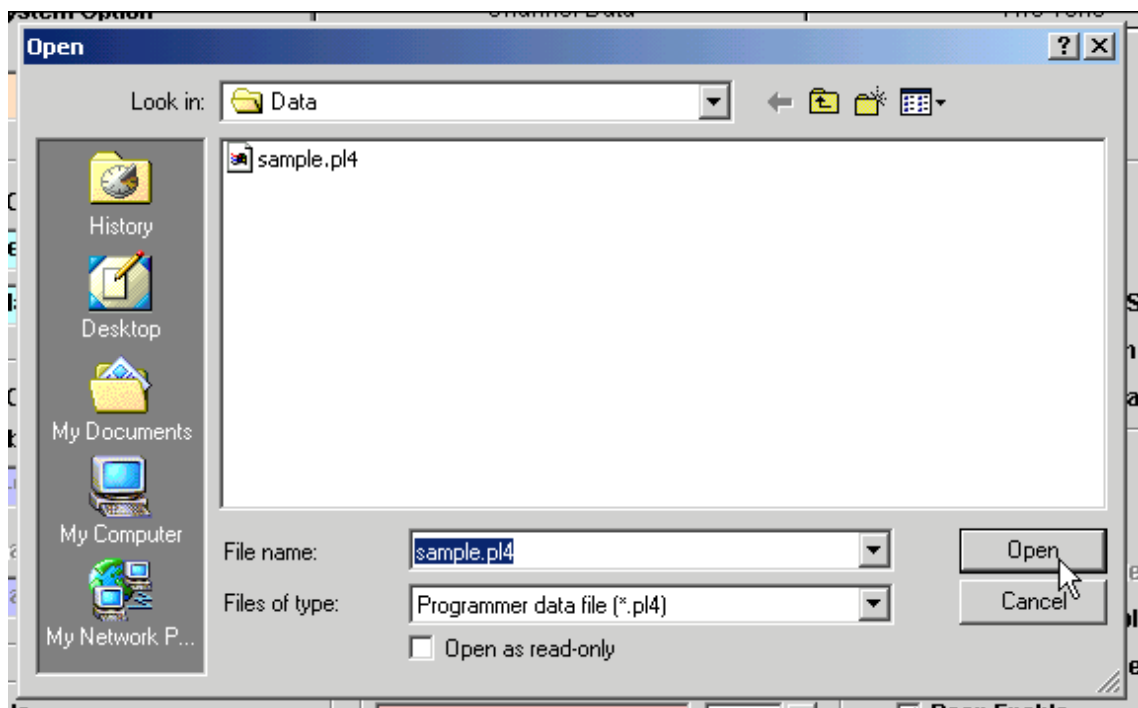
- 1) Select File(F) on the menu bar and click Save(S) in sub menu or select the icon of diskette to save the selected data.
- 2) Save window pops on and then write the file name and click save (S).
- 3) File extension is *.pl4 and it cannot be changed.

(In case of Model Group 1, File extension is *.chs and it cannot be changed.)



(2) OPEN FILES

- 1) Select File(F) on the menu bar and click Open(O) in sub menu or select the icon of open note to open the file.
- 2) Save window pops on and then designate the path in which the file is.
- 3) Select the file you want to open.

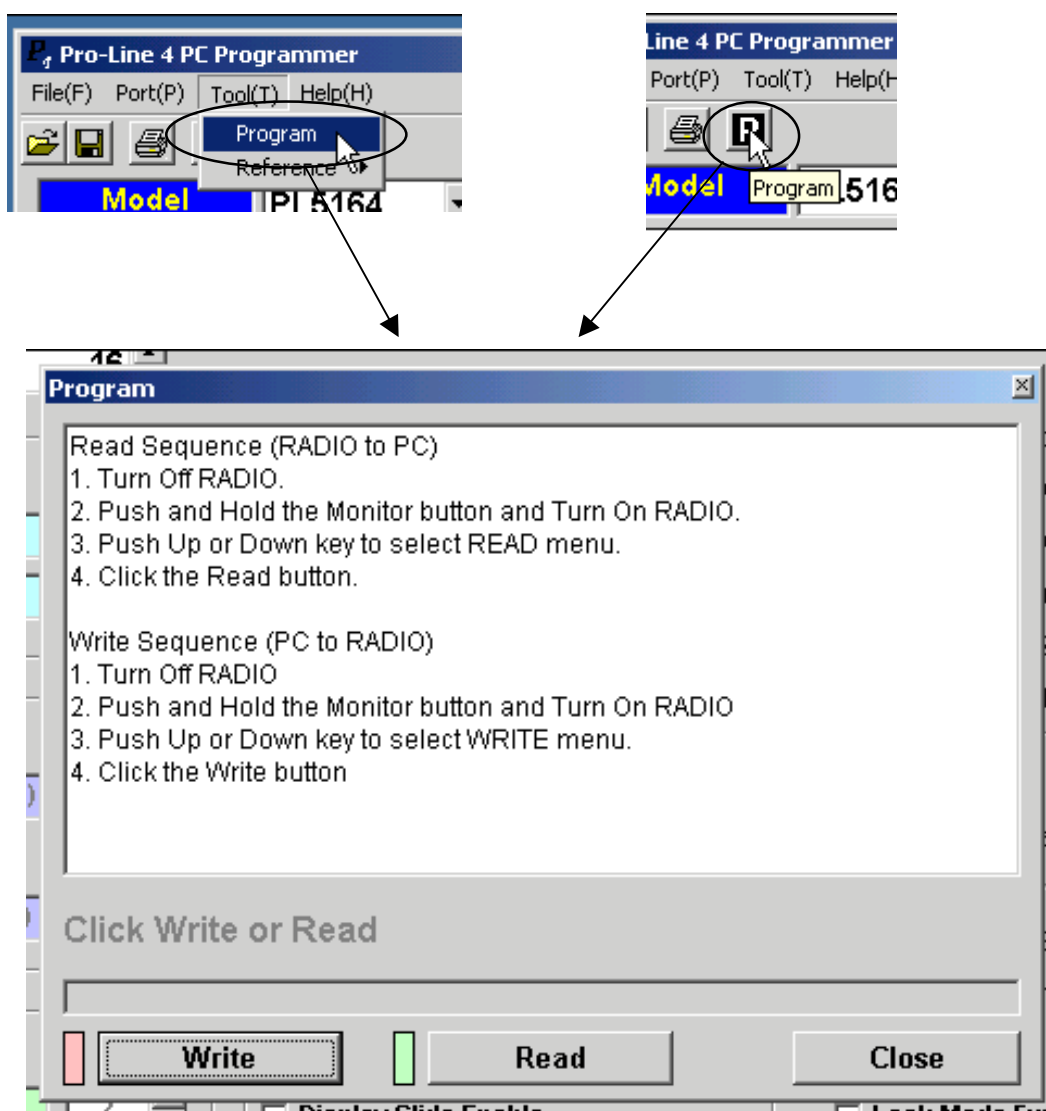


7. INTERFACE WITH RADIO

To download or upload, the radio is set in setting mode right. Please, refer to the manual of the radio and set the mode for download or upload and then link the radio to PC.

Select program menu or click program button in the tool bar. Then the process before link to PC will be displayed for your reference.

In menu bar, click "Tool(T)" and select "Program" in sub-menu. A window pops on as under. Click "Write" or "Read" by mouse.



(1) Transmit data to Radio.

- 1) Confirm if radio is set to download mode from PC and serial port is connected correctly.
Click "Write" button to be ready mode for download.
- 2) Press Mode Key to start download.
- 3) When writing starts properly, a red square of the left side of write buttons is blinking.
- 4) If writing works improperly, communication error message will be displayed. If there is not error message and progress bar doesn't work, please check if PC and radio are connected well. Then, restart.

(2) Receiving data from radio.

- 1) Confirm if radio is set to upload mode to PC and serial port is connected correctly. Click "Read" button to be ready mode for upload.
- 2) Press Mode Key to start upload.
- 3) When reading starts properly, a green square of the left side of reading buttons is blinking.

NOTE1: If interface is not good so that data turns to be invalid, communication error message is displayed. And then, uploading or downloading is terminated.

NOTE2: In downloading, if model is not proper, error message is displayed and downloading is terminated.