

HANDHELD COMPUTER
DA05 Pocket PC
Quick Start Guide

Copyright © 2007

All rights reserved. No part of this publication may be reproduced, transmitted, transcribed, stored in a retrieval system, or translated into any language, or computer language, in any form, or by any means, electronic, mechanical, magnetic, optical, chemical, or other, without the prior written permission of the manufacturer.

The manufacture reserves the right to revise this publication and to make changes from time to time in the contents hereof without obligation to notify any person of such revision or changes.

The manufacturer makes no representations or warranties, either expressed or implied, with respect to the contents hereof and specifically disclaims any warranties as to merchantability or fitness for any particular purpose. Any of the manufacturer's software described in this manual is sold or licensed "as is". Should the programs prove defective following their purchase, the buyer (and not the manufacturer, its distributor, or its dealer), assumes the entire cost of all necessary servicing, repair and any incidental or consequential damages resulting from any defect in the software.

Trademark Acknowledgments

IBM, PC are registered trademarks of International Business Machines Corp.

Microsoft, Windows CE, Pocket PC, and Windows Mobile are registered trademarks of Microsoft Corp.

Intel, Bulverde are the registered trademarks of Intel Corp.

All product and company names are trademarks or registered trademarks of their respective holders.

EMC and Safety Notice

Federal Communications Commission Radio Frequency Interference Statement

This equipment generates, uses, and can radiate radio frequency energy and if not installed and used in accordance with the instructions, may cause interference to radio communications. This equipment has been tested and found to comply with the limits for a class B digital device, pursuant to part 15 of the FCC Rules. These limits are designed to provide reasonable protection against harmful interference in a residential installation.

This equipment generates, uses and can radiate radio frequency energy and, if not installed and used in accordance with the instructions, may cause harmful interference to radio communications. However, there is no guarantee that interference will not occur in a particular installation. If this equipment does cause harmful interference to radio or television reception, which can be determined by turning the equipment off and on, the user is encouraged to try to correct the interference by one or more of the following measures:

- Reorient or relocate the receiving antenna.
- Increase the separation between the equipment and receiver.

---Connect the equipment into an outlet on a circuit different from that to which the receiver is connected.

---Consult the dealer or an experienced radio/TV technician for help.

This Transmitter must not be co-located or operating in conjunction with any other antenna or transmitter.

Any changes or modifications (including the antennas) made to this device that are not expressly approved by the manufacturer may void the user's authority to operate the equipment.

This equipment complies with FCC RF radiation exposure limits set forth for an uncontrolled environment. To maintain compliance with FCC RF exposure compliance requirements, avoid direct contact to the transmitting antenna during transmitting.

Countermeasures if interference occurs

You are encouraged to do the following if interference occurs while you are operating the device:

1. Turn OFF the unit and unplug the AC adapter from the outlet to see if the interference disappears.
2. Connect the AC adapter to the outlet in another room and check if the interference still exists.
3. Use an outlet that is far away from the interfered appliance.
4. Re-orient your computer in respect to the interfered appliance to see if there is improvement.

If all of these failed, please call your dealer for help.

CE

This equipment complies with the requirements set out in the Council Directive on the Approximation of the laws of the Member States relating to Electromagnetic Compatibility (89/336/EEC). For the evaluation regarding the electromagnetic compatibility, the following standards were applied:

EN55022 +A2:2003 Class B EMI Conduction and Radiation
EN61000-3-2 Harmonics
EN61000-3-3 +A1:2001 Flicker (Voltage fluctuation)

EN55024 EMS

EN61000-4-2 +A2:2001 ESD

EN61000-4-3 +A1:2002 RS

EN61000-4-4 +A2:2001 EFT

EN61000-4-5 +A1:2001 Surge

EN61000-4-6 +A1:2001 CS

EN61000-4-8 Power-Frequency Magnetic Field

EN61000-4-11 +A1:2001 Voltage Dips and Voltage Interruptions

LVD EN60950-1 :2001

ETSI EN301 489-01 V1.4.1 EMC Standards for Radio Equipment

ETSI EN 301 489-17 1.2.1 EMC Standards for 2.4GHz Wideband Transmission
Systems)

ETSI EN 300 328-2 V1.2.1 EMC Standards for Using Spread Spectrum
Modulation Techniques

UL, TÜV

AC Adapter (EN60950 LVD is included in TÜV)

E-Mark

Registered e13

Material Safety and Recycling Notice

All materials used in the construction of this unit are recyclable or environmentally friendly. No mercury, cadmium, CFC or related materials were used in the manufacturing process or inside the product.

Please recycle the packing materials, and at the end of the unit's life, all other materials in accordance with the local regulations.

Please refer “**Materials and Recycling**” for the contents of the materials.

CONTENTS

GETTING STARTED.....	1
UNPACKING.....	1
QUICK CHECK	2
CONTROLS, INDICATORS, AND PORTS.....	3
OPERATING ENVIRONMENT AND RUGGEDNESS	10
COMPONENTS AND FUNCTIONS	11
AC ADAPTER.....	11
BATTERY	11
CHARGE BATTERY	12
SWAP BATTERY.....	13
OPTIONAL DEVICES.....	14
CRADLE (OPTIONAL)	14
PCMCIA SLOT	18
SD SLOT	18
BASIC OPERATION	20

GET HELP	20
CALIBRATE TOUCH SCREEN.....	20
ADJUST VOLUME	20
SET YOUR OWN BUTTON FUNCTIONS	20
TODAY SCREEN	21
FIND A FILE.....	21
REMOVE PROGRAMS.....	21
MANAGE CERTIFICATES.....	21
INPUT	22
MENUS.....	22
OWNER INFORMATION	22
PASSWORD.....	22
SOUNDS & NOTIFICATIONS	22
CLOCK	23
MEMORY	23
POWER.....	23
BACK TO THE FACTORY SETTING (CLEAN THE PERSONAL DATA).....	23
USING WIRELESS LAN (OPTION).....	26
USING GSM/GPRS (OPTION).....	31

USING BLUETOOTH (OPTION)	37
SPECIFICATIONS	59
CPU	59
MEMORY	59
DISPLAY	59
TOUCH SCREEN	59
I/O PORTS	60
SYSTEM UNIT DIMENSIONS AND WEIGHT	60
AC ADAPTER	60
BATTERY	61
MATERIALS AND RECYCLING	62
ENVIRONMENTAL RATINGS	63
MAINTENANCE / SERVICE	64
CLEANING	64
TROUBLESHOOTING	64
RMA SERVICE	65

GETTING STARTED

Unpacking

The following components come with your handheld computer.

If anything is missing or damaged please notify the dealer immediately.

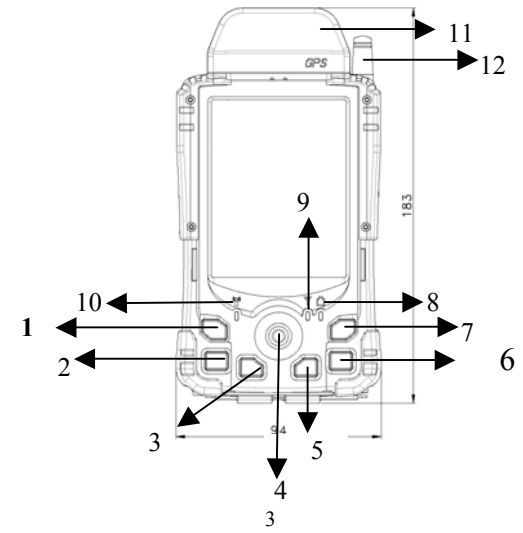
1. Handheld computer unit
2. AC adapter
3. AC power cord
4. User's guide
5. Companion CD
6. Data sync cable (USB)
7. Spare stylus(with tether)



Quick Check

- Attach the AC adapter to AC outlet. The adapter LED indicates the power is ready.
- Insert the battery and then plug in the adapter to handheld computer. Orange charge LED will light up till the battery is full charged. Charging time will be about 4 hours. **, It's recommended the battery is full charged before setting up.**
- Press the power button momentarily to turn on this device.
- Follow up the instruction on screen to finish the basic setting.
- Press power button momentarily to turn OFF computer.

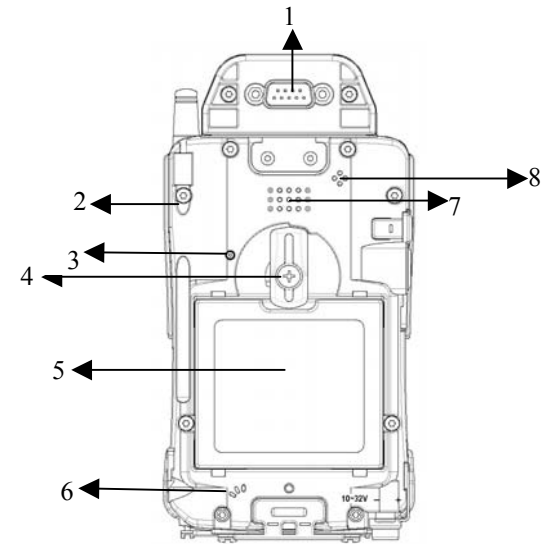
Controls, Indicators, and Ports

Front:



-
1. **Wireless ON/OFF** (Flight or button 3)
Turn ON/OFF the wireless device
(Option: WiFi, Bluetooth, Phone, GPS) Please turn it OFF at locations with wireless control (hospital, onboard airplane, etc.)
 2. **Button (User programmable)(Dial button in Phone edition)**
 3. **Button (User programmable)**
 4. **Navigator button**
[Left], [Right], [Up], [Down] 4 directions
[Enter] at the center
 5. **Button (User programmable)**
 6. **Button 4 (User programmable) (Hang up button in Phone edition)**
 7. **Power Button**
Suspend or Wake up the system.
 8.  **Battery charging status** indicator(Charging: orange, Full: No light)
 9.  **GSM/GPRS status indicator** (On: green))
 10. WLAN/Bluetooth indicator(ON: blue)
 11. GPS antenna(Option)
 12. GSM antenna(Option)

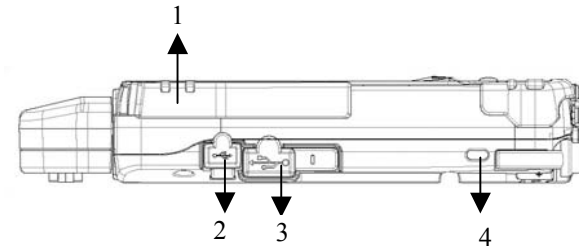
Rear:



- 1. DB9 Connector
- 2. Stylus

-
3. Reset Button
 4. Battery knob
 5. Battery
 6. Microphone
 7. Speaker (under hand strap)
 8. Phone receiver

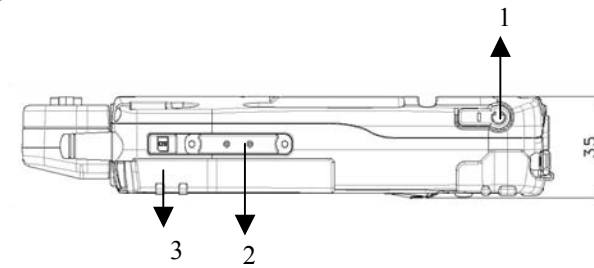
Left:



1. Wireless device antenna
2. USB client port
Data sync with the computer.

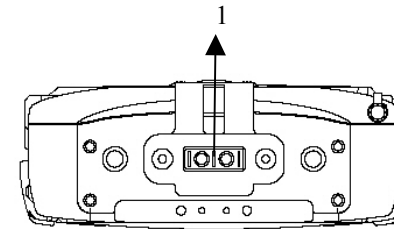
-
3. USB Host port
For Keyboard, USB Flash storage.
 4. Kensington lock slot

Right:



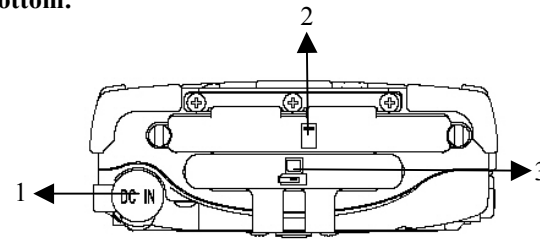
1. Microphone/Earphone jack
2. SD I/O slot (Secured Digital card and device)
3. 2nd antenna (optional)

Top:



1. Serial port or GPS antenna

Bottom:



- 1 DC jack
- 2 PCMCIA slot
One PCMCIA type II slot
CF (Compact Flash card) will be available by PCMCIA-to-CF adapter
- 3 Cradle docking connector
Connection to cradle

Operating Environment and Ruggedness

A clean and moisture-free environment is preferred.

If it is necessary to work in a hostile environment, please make sure all ports are well protected from dust, moisture, or water. Proper isolation from extreme hazardous exposure is recommended.

The computer is designed with rugged features of vibration, shock, dust, and rain/water protection. However, it is still necessary to provide appropriate protection while exposing to harsh environments.

All connectors will decay or corrode if exposed to water or moisture. Corrosion is accelerated if the power is ON. Please take proper water-resistant measures for cable connections.

The DC jack is sealed type which may be operated with water splashing while DC power cord attached. All other port caps should be in place when no cable is attached.

Regularly maintain the computer by cleaning dust, water, etc. will help keeping it in optimal condition.

*Warning: There is no isolated compartment in SD slot, PCMCIA slot, and docking.
These ports must be tightly sealed while working with dust/water.*

COMPONENTS AND FUNCTIONS

AC adapter

When using the AC adapter:

- Use a properly grounded AC outlet.
- Use one AC outlet exclusively for the computer. Having other appliances on the same line may cause interference.
- Use a power strip with built-in surge protection.

The AC adapter automatically detects the AC line voltage (110V or 220V) and adjusts accordingly.

Battery

The computer will automatically switch to battery power when the external power source (AC adapter) is disconnected.

Battery Power Saving Tips

- Turn OFF the LCD backlight when it is visible with external light
- Lower the intensity of the backlight

-
- Shut down the computer when not to use for a longer time

Battery Low

When the battery is nearly exhausted, the computer prompts a window warning. Once the Battery Low warning occurs, please do either or all of the following:

1. Save and close the files you are currently working on
2. Plug in the AC adapter to recharge the battery
3. Swap a charged battery

Charge Battery

1. Plug in AC adapter will charge the battery automatically. If the battery is already full, the system will stop charge automatically.
2. Dock to optional cradle + adapter will charge battery, too. Cradle has a battery slot to charge another battery solely.
3. Connect USB client cable to laptop or PC to charge battery but it needs 15 hours above.
4. The USB client connector on cradle has not battery charging function.

Swap Battery

To swap the battery:

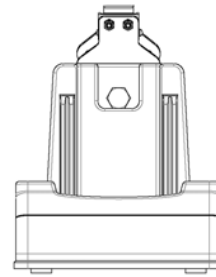
1. Turn power OFF
2. Turn the battery knob counterclockwise to loose the battery
3. Remove battery from compartment
4. Insert a new battery
5. Press the battery down and turn battery knob clockwise to lock it
6. Press power button to turn ON the computer

Optional Devices

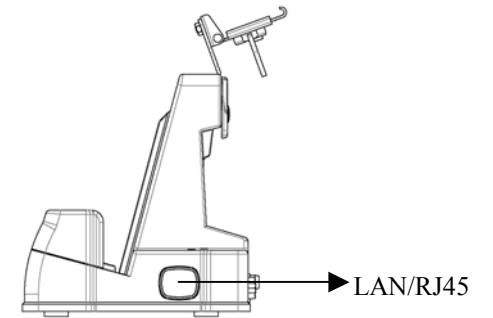
Cradle (optional)

Cradle is the device for docking, port extension, and battery charging. AC adapter may attach directly to cradle and charges the computer battery as well as spare battery. There is a battery slot on the back of cradle to mount spare battery.

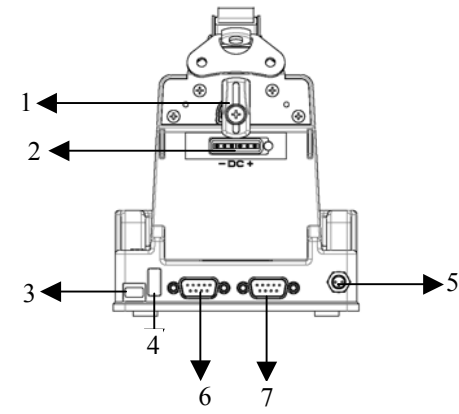
Front:



Right



Rear



-
1. Battery Lock
 2. Spare battery charger
 3. USB Client
 4. USB Host
 5. DC IN
 6. COM port
 7. Optional COM port

Mount the cradle:

1. Computer may dock either power is ON or OFF (recommend OFF)
2. Open the rubber cap on the docking connector
3. Align the computer with cradle docking connector
4. Firmly push the computer down to engage the docking connector
5. Turn rotary latch to fix the computer

Remove from the cradle:

1. Turn loose the rotary latch to release computer

2. Pull away the computer either power is ON or OFF

Mount spare battery: (spare battery is optional)

Perform the same procedure as mounting primary battery on computer. Cradle will charge computer and spare battery simultaneously.

PCMCIA Slot

The computer accepts one type-II PCMCIA card. Insert the card firmly into the slot and fix the rubber cover for water/dust protection.

To remove the card, push the eject button to pop out the card. The eject button can hide into the compartment by pushing it inward gently.

It may be necessary to load PCMCIA card driver to enable the function.

Note: If the computer is working with dust, moisture, or water, to be sure to fix the PCMCIA rubber cap tightly with screws.

SD Slot

The computer accepts one SD card (Secured Digital Card).

Insert the card firmly into the slot and fix the rubber cover for water/dust protection.

To remove the card, push the eject button to release it.

Note: If the computer is working with dust, moisture, or water, be sure to fix the SD rubber cap tightly with screws.

BASIC OPERATION

Get Help


Tap **Start** → **Help**

Get the needed information from the list or the bundled CD.

Calibrate Touch Screen

Tap **Start** → **Settings** → **System** → **Screen** → **Align Screen** to calibrate.

Adjust Volume

Tap speaker icon  on the top bar and adjust the volume level as desired.

Set Your Own Button Functions

Tap **Start** → **Settings** → **Personal** → **Buttons**

Define the button functions from the selection list

Today Screen

The today screen displays information of today's appointments and status icons, etc. Tap the information listed on today screen to execute the associated program. Tap **Start → Today** to enter Today screen.

Find a File

Tap **Start → Find**

In **Find**, enter the file name, word, or other information you want to search for, If you have looked for this item before, tap the **Find** arrow and select the item from the list.

In **Type**, select a data type to help narrow your search. Tap **Go**, My document folder and subfolder are searched in the results list.

Remove Programs

Tap **Start → Settings → System → Remove Programs** and follow the prompts to delete.

Manage Certificates

Tap **Start → Settings → System → Certificates**

Input your certificates. To delete a certificate, tap and hold it in the list, and then tap **Delete**.

Input

Tap **Start → Settings → Personal → Input**
Select the input method and option you want.

Menus

Tap **Start → Settings → Personal → Menus** and select the items you want to appear on Start Menu.

Owner Information

Tap **Start → Settings → Personal → Owner Information** and follow the descriptions. On the identification tab, enter your personal information. Select “**Show information when device is turn on**” your information will be displayed at power ON.

Password

Tap **Start → Settings → Personal → Password** and follow the descriptions.

Sounds & Notifications

Tap **Start → Settings → Personal → Sound & Notification** and set your favorite notifications.

Clock

Tap **Start** → **Settings** → **System** → **Clock**.

Memory

Tap **Start** → **Settings** → **System** → **Memory** and follow the descriptions.

The main tab displays the amount of memory the system has allocated to file and data storage versus the available memory.

The storage card tab displays how much memory is available on a storage card that is inserted in your device.

The running programs tab displays the list of the currently active programs. You can stop a program by selecting it in the list and tapping stop.

Power

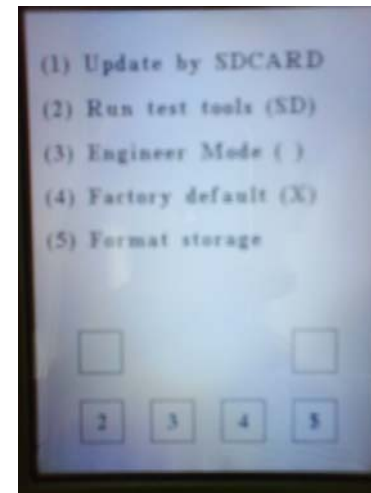
Tap **Start** → **Settings** → **System** → **Power**

The Battery tab displays the amount of battery power remaining.

Back to the factory setting (Clean the personal data)



1. Press and Hold Key4 and use stylus to tap reset button (on the rear).System will enter Eboot mode.
2. Press Key5 to format Storage.
3. Use stylus to tap rest button(on the rear) to reboot System

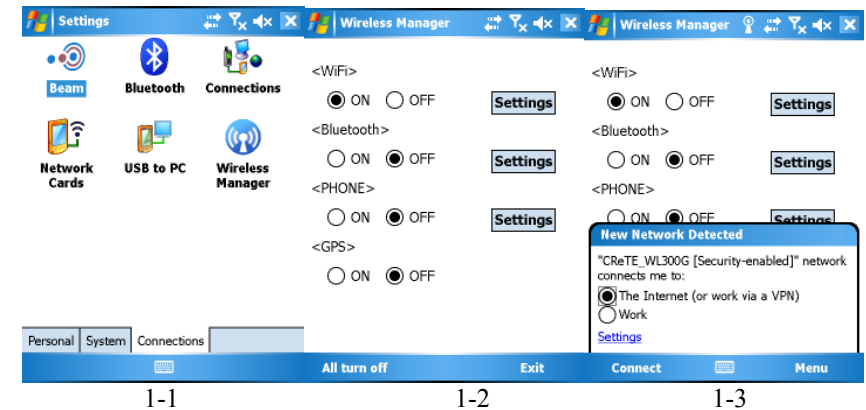


Using Wireless LAN (option)

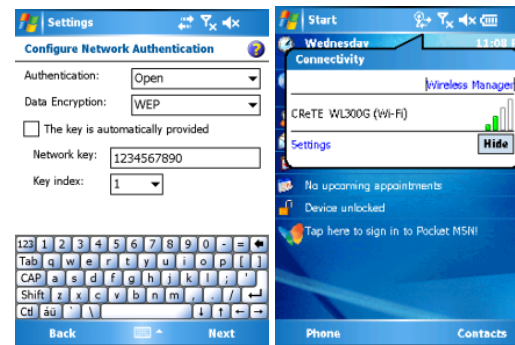
1. Connect to Internet:

Turn on the Wireless Signals.

- 1.1 Tap “Start”->”Settings”-> “Connection” tab.
- 1.2 Tap “Wireless Manager” and select “<WiFi>” item then select checkbox to “ON”. (Figure 1-1 & 1-2)
- 1.3 Wireless function has been enabled. (Figure 1-3)



- 1.4 To input network authentication keys. (Figure 1-4)
- 1.5 If network keys are ok then you can see the Wireless works correctly. (Figure 1-5)
- 1.6 Open Internet Explorer, now you can use Wireless function to connect to interne



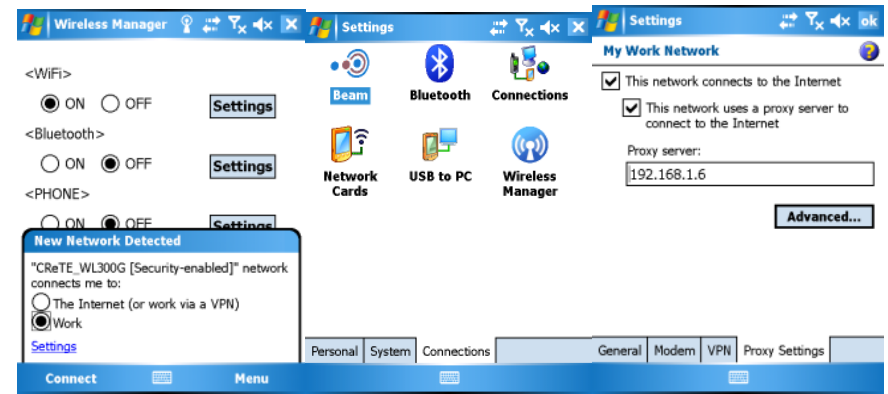
1-4

1-5

2. Connect to Intranet Network:

- 2.1 Please refer to step 1.1 ~ step 1.3
- 2.2 Select “Work” option need to set the proxy later. (Figure 2-1).
- 2.3 if the connection needs network key, the screen will promptly pop up a Network key input Just type a correct network keys. (Figure 1-4)

-
- 2.4 Tap “Start”->”Settings”-> “Connection” tab and tap “Connections”. (Figure 2-2)
 - 2.5 Select “Set up my proxy server” to setup proxy and other relative settings etc. (Figure 2-3 & 2-4)
 - 2.6 Tap “Start”->”File Explorer” , select “Menu”->”Open Path”->”New Path” , it will pop up a dialog to prompt you enter your intranet path. (Figure 2-5)
 - 2.7 If you enter user name and password are correctly that you should be able to see intranet paths and files appear.



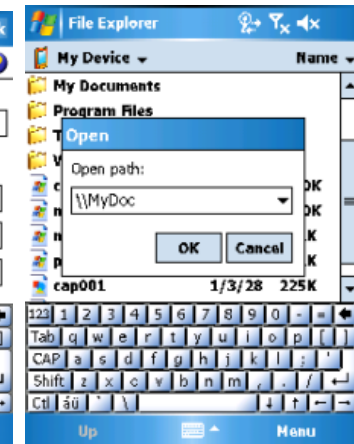
2-1

2-2

2-3



2-4



2-5

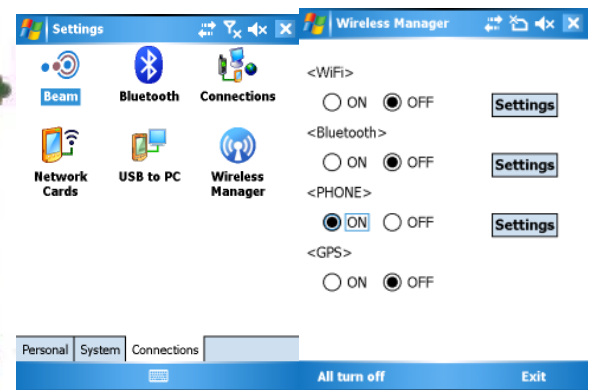
Using GSM/GPRS (option)

3. GSM

- 3.1 Firstly, to unplug the battery from DA05 rear and put SIM card into SIM slot.
- 3.2 Make sure the SIM card is connected correctly then put the battery back to DA05. (Figure 3-1)
- 3.3 Tap “Start”->”Settings”-> “Connection” tab
- 3.4 Tap “Wireless Manager” and select “<PHONE>” item then select checkbox to “ON”. (Figure 3-2 &3-3)
- 3.5 Press “GSM” button on the DA05 keypad and screen will pop up a dial-up dialog. (Note: If you have a SIM code that you must input the code to enable phone function.) (Figure 3-4 & 3-5)
- 3.6 Now you can dial phone number connect with other phone device.



3-1

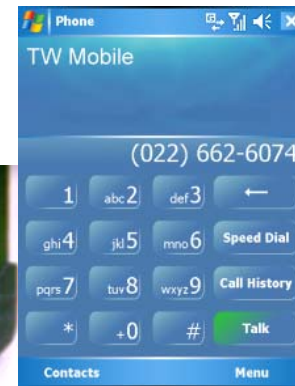


3-2

3-3



3-4

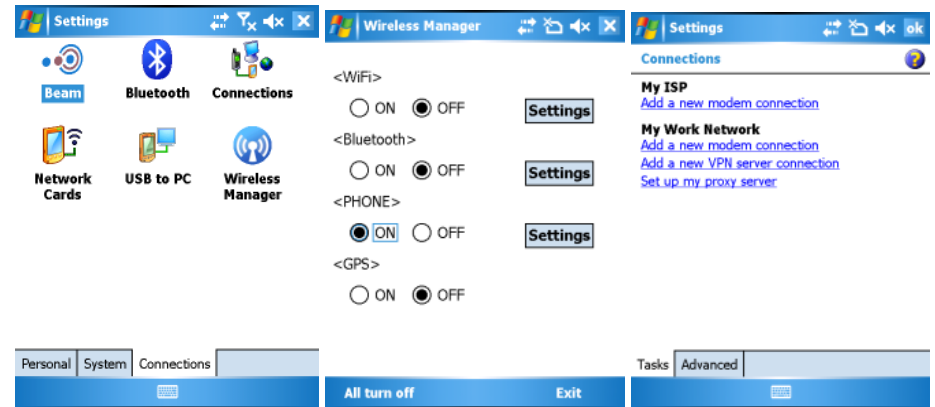


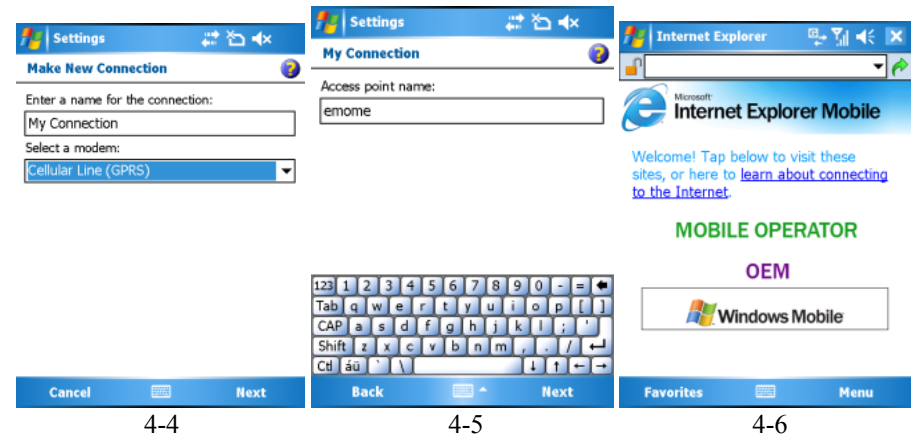
3-5

4 GPRS

4.1 Please refer to step 3.1 ~ step 3.4.

-
- 4.2 Tap “Start”->”Settings”->”Connections” and select “Add a new modem connection” under “My ISP” item. (Figure 4-3)
 - 4.3 select modem type to "Cellular Line(GPRS)", tap Next, then enter the Access Point Name(APN) (Note: It is most important to enter this name, and the APN is different for each ISP provider). Tap Next, enter user Name and Password, then GPRS settings will be done. (Figure 4-4 & 4-5)
 - 4.4 Open Internet explorer, enter a URL for browse, the GPRS will connect automatically and the status will become Connected. (Figure 4-6)



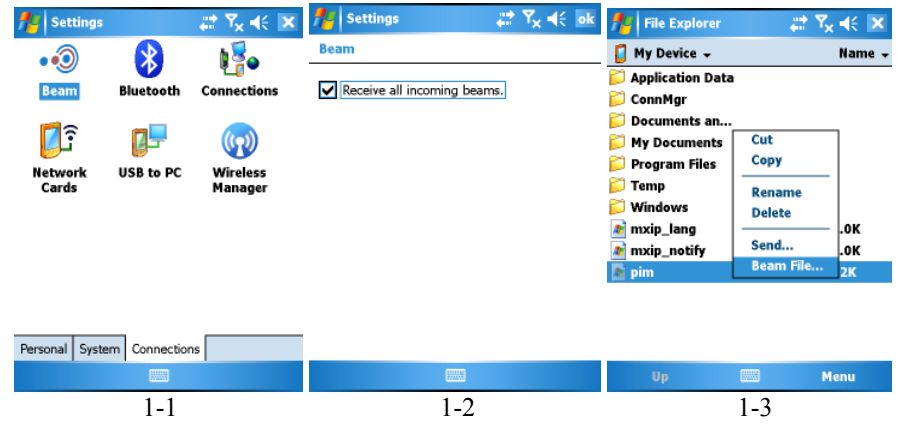


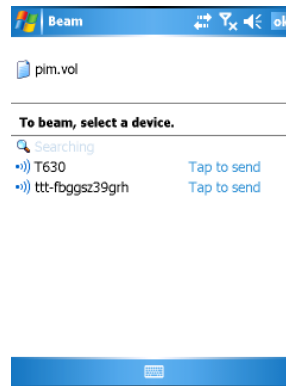
Using Bluetooth (option)

1. Beam File function:

Turn on bluetooth signals.

- 1.1 Tap “Start”->”Settings”->”Connections”. (Figure 1-1)
- 1.2 Tap Beam and make sure that the “Receive all incoming beams” option is checked. (Figure 1-2)
- 1.3 Tap “Start”->”Program”->”File Explorer”, tap and hold the file name to be copied and then tap “Beam File” on the pop-up menu. (Figure 1-3)
- 1.4 Then you will see discoverable devices like following screen and tap then send this file to target device. (Figure 1-4)



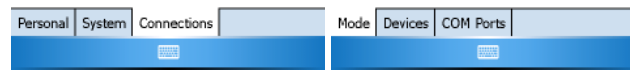
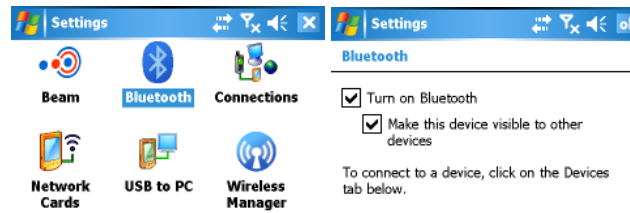


1-4

2 OBEX Profile :

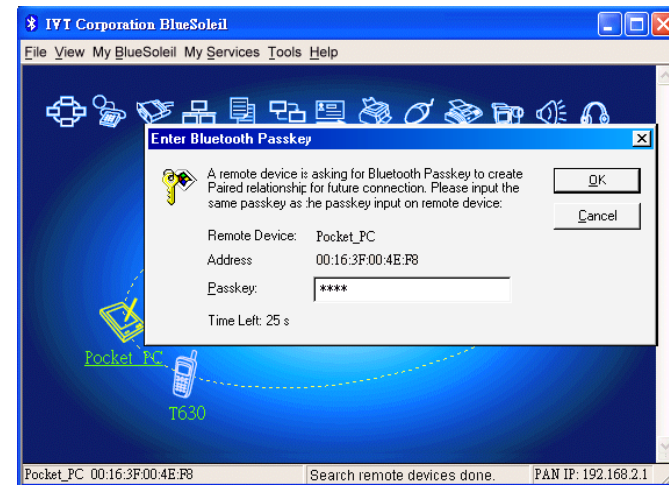
2.1 Tap “Start”->”Settings”->”Connections”. (Figure 2-1)

-
- 2.2 Tap BlueTooth and make sure that both “Turn on Bluetooth” and “Make this device visible to other devices” options are checked. (Figure 2-2)
 - 2.3 Execute IVT Soleil Bluetooth program from PC. (Figure 2-3)
 - 2.4 Click Pocket_PC icon and click right mouse button then choice pairing option.
 - 2.5 To input pairing password with connected device.(Note: pairing password must same as remote device)(Figure 2-3)
 - 2.6 Meanwhile, device side will appear pairing password dialog as figure B2.4 and input password same as PC side. (Figure 2-4)
 - 2.7 Tap highlight icon “OBEX Service” from PC’s IVT Soleil program then transfor Naming card to device. (Figure 2-5)
 - 2.8 Finally, the device will appeared a message to prompt you want to save the data to contact list or not. (Figure 2-6)



2-1

2-2



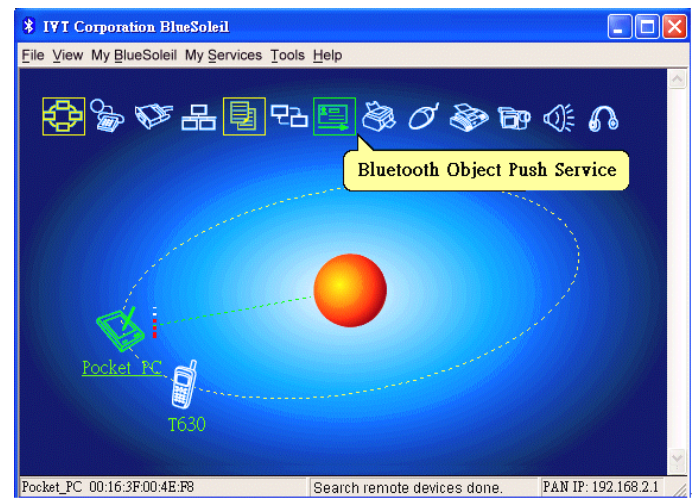
2-3



2-4



2-6



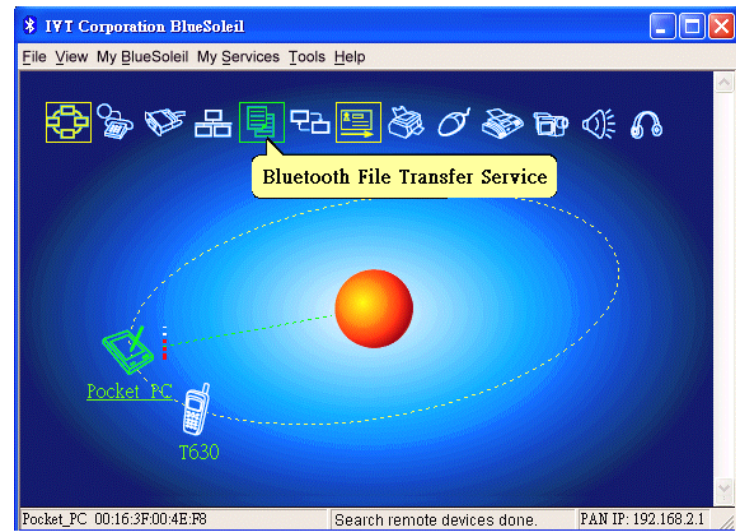
2-5

3 **FTP Profile :**

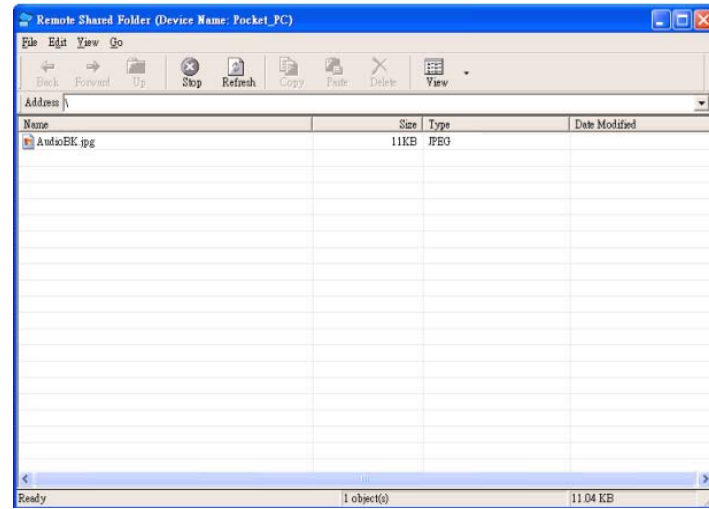
3.1 Please refer to step 2.1 ~ step 2.6.

3.2 Tap highlight icon “FTP Service” from PC’s IVT Soleil program then transfer Naming card to device. (Figure 3-1)

3.3 Finally, drag target file from File Explorer and drop to “Remote share folder” then file transfer will be done. (Figure 3-2).



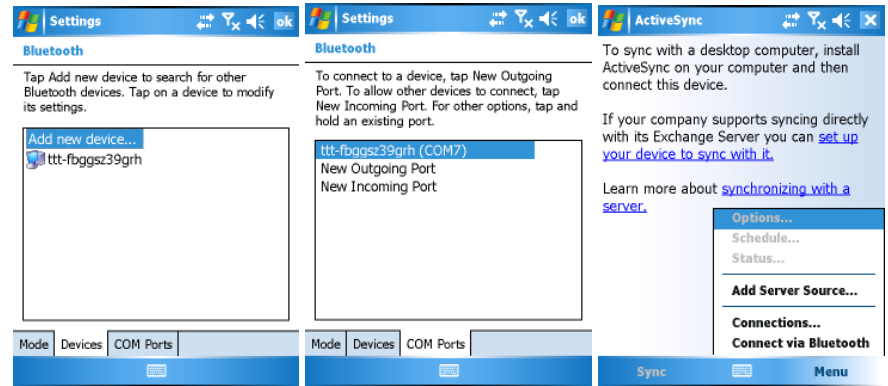
3-1



3-2

4 ActiveSync Profile :

- 4.1 Tap “Start”->”Settings”->”Connections”. (Figure 2-1)
- 4.2 Tap “BlueTooth” -> “Device”->”Add new device” to search PC bluetooth host devices. (Figure 4-1)
- 4.3 Tap “COM Ports” ->”New Outgoing Port” and tap target device like “ttt-fbggsz39grh” , tap “Next” and choice virtual com port. Here it assumed is “COM7” for we need. (Figure 4-2)
- 4.4 Tap Start->Programs->ActiveSync and choice “Connect via Bluetooth” option. (Figure 4-3)
- 4.5 Execute Microsoft ActiveSync from your PC and make sure select “COM7” option to made a bluetooth activesync connection. (Figure 4-4)



4-1

4-2

4-3



4-4

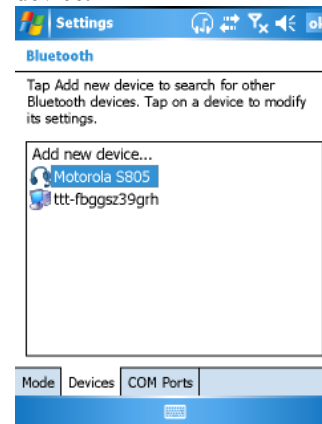
5 A2DP Profile :

5.1 Tap "Start"->"Settings"->"Connections". (Figure 2-1)

5.2 Tap “BlueTooth” -> “Device”->”Add new device” to search Bluetooth A2DP device. (Figure 5-1)

5.3 To input the pairing password is “0000” and task bar will appear headset icon.

5.4 Now you could play music or video file and heard sound from connected device.



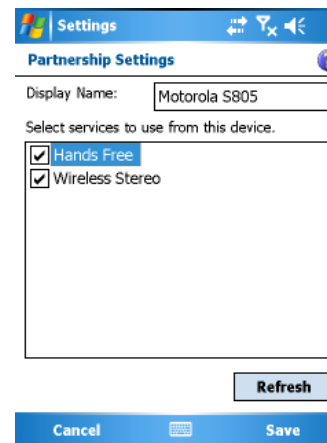
6 Hand-Free Profile :

6.1 Tap “Start”->”Settings”->”Connections”. (Figure 2-1)

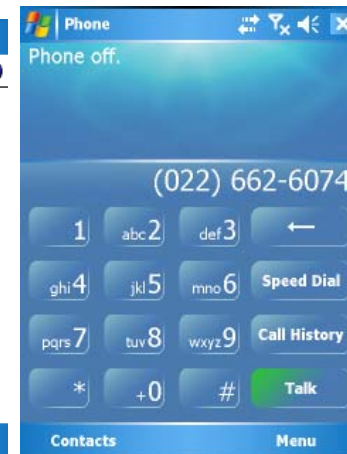
6.2 Tap “BlueTooth” -> “Device”->”Add new device” to search Hand-Free device. (Figure 5-1)

6.3 To input the pairing password is “0000” and task bar will appear headset icon.

6.4 Now you could press Hand-Free button from remote device and see phone’s dial-up dialog appear for your operate. (Figure 6-1 & 6-2)



6-1



6-2

7 **SPP Profile :**

7.1 Tap “Start”->”Settings”->”Connections”. (Figure 2-1)

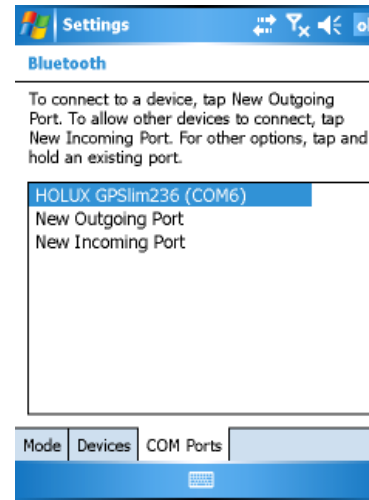
7.2 Tap “BlueTooth” -> “Device”->”Add new device” to search SPP device.
(Figure 7-1)

7.3 Tap “New Outgoing Port” to

7.4 To input the pairing password is “0000”.

7.5 Select a “Virtual Com Port” like “COM6” for your implemented.

7.5 Now you could use Bluetooth GPS device to receive GPS data. (Figure 7-1 & 7-2)



7-1



7-2

8 **HID Profile :**

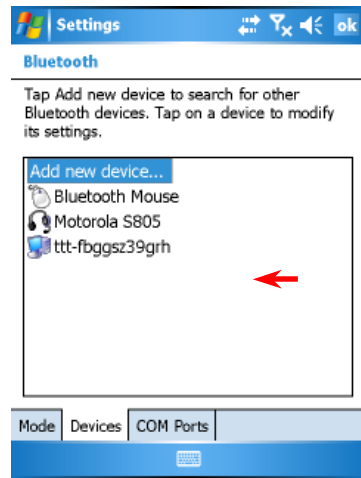
8.1 Tap “Start”->”Settings”->”Connections” (Figure 2-1)

8.2 Tap “BlueTooth” -> “Device” tab and tap “Add new device” to search Bluetooth HID Mouse device. (Figure 8-1)

8.3 To input the pairing password is “0000”.

8.4 Now you could use Bluetooth HID Mouse to move mouse position and click focus something.

PS: Bluetooth HID Keyboard is same as Bluetooth HID Mouse settings and will be used for user input.



8-1

SPECIFICATIONS

CPU

Intel Bulverde PXA270
CPU speed 624MHz

Memory

RAM 128MB
ROM 128MB

Display

Type: 4" Active TFT Transflective Color LCD
Resolution: 480 x 640 pixels
Color: 64K
Backlight: LED

Touch Screen

Type: Resistive

Interface: Serial

I/O ports

USB 2.0 port

USB client port

Serial port

Audio ports (Microphone/Earphone)

PCMCIA slot (type II x 1)

SD slot

System Unit Dimensions and Weight

Width: 90mm (W 3.5")

Depth: 150mm (H 5.9")

Height: 33mm (D 1.3")

Weight: 450g (15 oz.)

AC Adapter

Voltage: AC 100~240 V

Frequency: 50/60 Hz
Output Voltage: DC 12V 3.75A
Maximum Power: 45 Watts
Dimension: 108mm (4.2" W) x 56mm (2.2" D) x 34mm (1.3" H)
Weight: 270 g (9.5 oz.)

Battery

Type: Lithium Ion
Capacity: 3.7V 3900mAH
Dimension: 71mm (W 2.8") x 64mm (D 2.5") x 12.3mm (H 0.5")
Weight: 108 g (3.8 oz.)

Materials and Recycling

Materials of the computer are as follows:

Cabinet:	Aluminum alloy ADC-12 or A380, Magnesium alloy AZ91D, UL grade PC+ABS GE C6200 or TN-3813BW
Bracket:	Aluminum 5052 Steel with Nickel plating Stainless Steel S304
Cushion pad:	Nature rubber
PCB:	FR-4, UL 94V0
Battery:	Rechargeable Lithium Ion
Packing:	Carton: Unbleached paper User's Guide: Recycled/Recyclable paper

Please recycle the parts according to local regulations.

Environmental Ratings

Temperature:	DA05I: 0°C ~ 45°C (32°F ~ 113°F) operating -20°C ~ 60°C (-4°F ~ 140°F) storage
	DA05M: -20°C ~ 50°C (-4°F ~ 140°F) operating -40°C ~ 70°C (-40°F ~ 158°F) storage
Humidity:	5 ~ 95% Non-condensing operating 95% maximum storage
Altitude:	0 ~ 12,180 meters (0 ~ 40,000 feet) operating and storage

MAINTENANCE / SERVICE

Cleaning

Always turn OFF the power, unplug the power cord and remove the battery before cleaning.

The exterior of the system and display may be wiped with a clean, soft, and lint-free cloth. If there is difficulty removing dirt, apply non-ammonia, non-alcohol based glass cleaner to the cloth and wipe.

An air gun is recommended for cleaning water and dust. For salty water please wipe with fresh water then blow-dry with an air gun. Close all caps tightly before water cleaning.

Troubleshooting

Should the computer fail to function properly, you may try the following troubleshooting steps: (Please backup your data before troubleshooting)

- Check AC adapter, battery, and the power source.
- Press hardware reset to re-boot the computer.
- Turn OFF the master switch for a while then turn ON and re-boot.

-
- Remove the software suspected.

RMA Service

If troubleshooting is unsuccessful, please consult your dealer for service

If it is necessary to send in the computer for repairs, please follow the dealer's instructions for RMA# procedure.

Shipping instructions:

1. Use the original shipping container and packing materials, if possible.
2. If the original packing materials are not available, wrap the equipment with soft material (e.g., PU/ PE form) then put the wrapped equipment into a hard cardboard shipping box.
3. Include a sheet with the following information: (Note: please keep a copy for your record)
 - Name
 - Address
 - Unit serial number
 - Place and date of purchase or the original invoice number
 - Date of failure

-
- A DETAILED description of the problems you have encountered
 - A list of the hardware/software configuration, if applicable.
4. Clearly mark the outside of the shipping box with the RMA number. This will facilitate faster processing and avoid faulty return.
 5. Unless prior arrangements have been made, the customer is responsible for all shipping costs. Unauthorized use of the company's shipping accounts is not permitted.

Recycled / Recycleable
Printed in Taiwan