



Mio  
**Moov** 380

# User Manual



Rev.: R00  
(2008/5)

**Trademarks**

All brand and product names are trademarks or registered trademarks of their respective companies.

**Disclaimer**

Specifications and documents are subject to change without notice. Mio Technology does not warrant this document is error-free. Mio Technology assumes no liability for damage incurred directly or indirectly from errors, omissions, or discrepancies between the device and the documents.

**Notes**

Not all models are available in all regions.

Depending upon the specific model purchased, the color and look of your device and accessories may not exactly match the graphics shown in this document.

The screenshots and other presentations shown in this document are for reference only. They may differ from the actual screens and presentations generated by the actual product.

---

# Table of Contents

---

Getting to know your Mio .....	3
Installing your SIM card.....	4
Charging the battery.....	5
Charging using the charger .....	5
Charging via the USB cable.....	5
Using your Mio in a vehicle.....	7
Operating basics .....	8
Turning on and off .....	8
Turning on for the first time .....	8
Suspended state.....	8
Turning off.....	8
Navigating on the screen .....	8
Main Menu .....	10
Reference .....	11
Inserting a memory card .....	11
Troubleshooting.....	11
Caring for your Mio .....	12
Regulatory information .....	13
Regulations statements.....	13
Europe .....	13
USA.....	13
Canada.....	14
Safety precautions.....	14
About charging .....	14
About the charger .....	14
About the battery .....	15
About SAR information.....	15
About the electrostatic discharge.....	15
About the phone .....	15



# Getting to know your Mio



	Name	Description
1	Power button	Press and hold this button to turn on and off the device.
2	Car Antenna connector	This connector (under rubber dust cover) allows use of an optional external antenna with magnetic mount, which may be positioned on top of the car for better signal reception in areas with poor reception.
3	Charge indicator	Indicates the level of battery charge: <b>Green</b> - battery full <b>Amber</b> - battery charging.
4	Signal indicator	Flashes in green when a mobile phone network is available.
5	Touch screen	Displays the output of your device. Tap the screen with the stylus to select menu commands or enter information.
6	Earphone connector	Connects to a pair of stereo earphones.
7	SIM card slot	Accepts a SIM card for you to use the phone feature.
8	Mini-USB connector	Connects to the charger or USB cable.
9	Memory card slot	Accepts a Micro SD card for accessing data such as additional maps.
10	Microphone	Receives sounds and voices.
11	Speaker	Sends out sounds and voices.

---

## Installing your SIM card

After applying for an account with a mobile phone service provider, you will be provided a SIM (Subscriber Identification Module) card. This card contains your mobile phone account details, contacts that can be stored and any additional services to which you have subscribed.

You must install a SIM card before you can use the phone feature.

To install a SIM card, open the SIM card slot cover and then insert the card with its golden contacts facing down (note the orientation of the card).



To remove a card, slightly push the top edge of the card to release it, and then pull it out of the slot.

---

# Charging the battery

## Charging using the charger

1. Plug the converter to the charger (❶).
2. Connect the mini-USB end of the charger to the mini-USB connector of your mio (❷).
3. Plug the other end of the charger into a wall outlet (❸).



4. The charge indicator glows amber when charging is in progress. When the battery is fully charged, the indicator turns green.

---

**CAUTION:** For optimal performance of the lithium battery:

- Do not charge the battery where the temperature is high (e.g. in direct sunlight).
- There is no need to fully discharge the battery before charging. You can charge the battery before it is discharged.
- When storing the product for a long period of time, be sure to fully charge the battery at least once every two weeks. Over discharge of the battery can affect the charging performance.

---

## Charging via the USB cable

If you intend to charge your Mio in this way, turn off your Mio so that it takes less time to charge the battery.

1. Turn on the computer.
2. Connect the mini-USB end of the USB cable to your Mio and the other end to a USB port on your computer.



3. The charge indicator glows amber when charging is in progress. When the battery is fully charged, the indicator turns green.

**Note:** When the Mio is connected to a computer, it is recognized as an external mass storage device. Do not delete any files pre-installed in the Mio. Deleting files of which the function is unknown can cause programs or features to malfunction.

**Note:** If your Mio is on when charging via the USB cable, the Mio will automatically restart when the USB cable is disconnected.

**Note:** When your Mio is on and connected to your computer, a screen appears to prevent you from using your Mio.

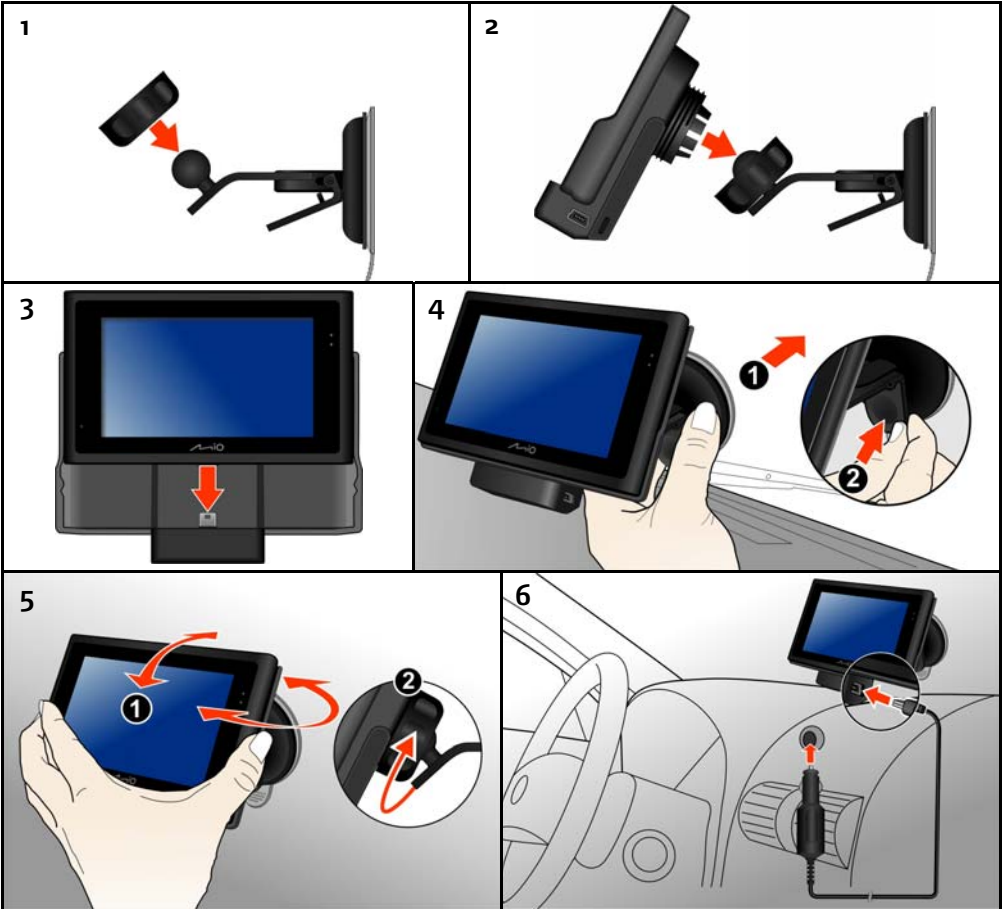
**Note:** If your Mio is on and you place it in the cradle when charging via the USB cable (see the later section for information on using the cradle), a screen appears for you to choose to play the pictures on the Mio or to transfer files between the Mio and the computer. If you choose to transfer files, a screen appears to prevent you from using your Mio.



# Using your Mio in a vehicle

**CAUTION:**

- Select an appropriate location for mounting the Mio in a vehicle. Never place the Mio where the driver's field of vision is blocked.
- If the car's windscreen is tinted with a reflective coating, it may be athermic and impact the GPS reception. In this instance, please mount your Mio where there is a "clear area."
- To protect your Mio against sudden surges in current, connect the car charger only after the car engine has been started.



---

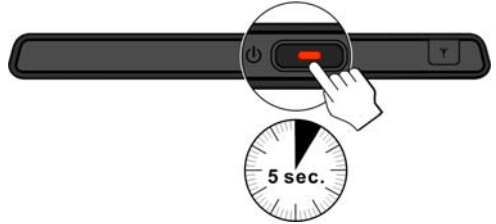
# Operating basics


## Turning on and off

### Turning on for the first time

1. Press and hold the power button for 5 seconds to turn on your Mio.

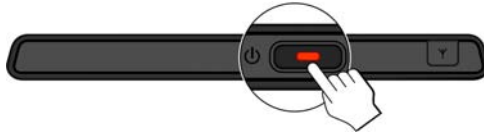
**Note:** When the Mio enters a suspended state, press the power button to resume the Mio.



2. Follow the prompts. Tap  to save your settings.
3. The Main Menu will display. You can now use your Mio.

### Suspended state

For normal operation, your Mio enters a suspended state when you press the power button. To use it again, press the power button again. Your Mio will be back to where you left off.



**Note:** The screen you see after resuming depends on the program you were using when you suspended the device. Some programs will be closed when you suspend the device, meaning you can only see the Home screen after resuming.

### Turning off

If you are not using the Mio, press and hold the Power button for 5 seconds to turn it off.

### Navigating on the screen

To operate your Mio, touch the screen with your fingertip. You can perform the following actions:

- **Tap**  
Touch the screen once with your fingertip to open items or select onscreen buttons or options.
- **Drag**  
Hold your fingertip on the screen and drag up/down/left/right or across the screen. (This is not supported by all applications.)



---

## Main Menu

After you turn on the Mio, the Main Menu appears. The Main Menu is your starting place for various tasks. Tap a button to start a program or open another menu. When you exit a program, you are back to the Main Menu.

---

# Reference

## Inserting a memory card

---

**CAUTION:** Do not apply pressure to the centre of the memory card.

---

Hold the card (Micro SD) by the edges and gently insert it into the slot with the label facing the back of the Mio.



To remove a card, gently push the top edge of the card inwards to release it, and pull it out of the slot.

## Troubleshooting

**Note:** If you encounter a problem you cannot solve, contact an authorized service center for assistance.

Problems	Solutions
Power does not turn on when using battery power.	The remaining battery power may be too low to run your Mio. Charge the battery.
Screen responds slowly.	Make sure that your Mio is not running out of battery power. If the problem still persists, reset your Mio.
Screen freezes.	Reset your Mio.
Screen is hard to read.	Make sure that the backlight of the display is set to a high-enough brightness.
Cannot establish a connection with a computer.	Make sure that your Mio and your computer are both turned on before trying to establish a connection.
	Make sure that the cable is securely plugged into the USB port on your computer and on the Mio. Connect the USB cable directly to your computer—do not run the cable through a USB hub.
	Reset your Mio before connecting the cable. Always disconnect your Mio before you restart your computer.

---

## Caring for your Mio

Taking good care of your Mio will ensure trouble-free operation and reduce the risk of damage to your Mio.

- Keep your Mio away from excessive moisture and extreme temperatures.
- Avoid exposing your Mio to direct sunlight or strong ultraviolet light for extended periods of time.
- Do not place anything on top of your Mio or drop objects on your Mio.
- Do not drop your Mio or subject it to severe shock.
- Do not subject your Mio to sudden and severe temperature changes. This could cause moisture condensation inside the unit, which could damage your Mio. In the event of moisture condensation, allow the Mio to dry out completely before use.
- The screen surface can easily be scratched. Avoid touching it with sharp objects. Non-adhesive generic screen protectors designed specifically for use on portable devices with LCD panels may be used to help protect the screen from minor scratches.
- Never clean your Mio with it powered on. Use a soft, lint-free cloth to wipe the screen and the exterior of your Mio.
- Do not use paper towels to clean the screen.
- Never attempt to disassemble, repair or make any modifications to your Mio. Disassembly, modification or any attempt at repair could cause damage to your Mio and even bodily injury or property damage and will void any warranty.
- Do not store or carry flammable liquids, gases or explosive materials in the same compartment as your Mio, its parts or accessories.

---

# Regulatory information

**Note:** For regulatory identification purposes, your Mio is assigned a model number of N171.

**Note:** Regulatory reports do not cover the performance effectiveness and accuracy of this device and physiological effects on users.

## Regulations statements

### Europe

Products with the CE marking comply with Radio & Telecommunication Terminal Equipment Directive (R&TTE) (1999/5/EEC), the Electromagnetic Compatibility Directive (89/336/EEC) and the Low Voltage Directive (2006/95/EC) – as amended by Directive 93/68/ECC - issued by the Commission of the European Community.

Compliance with these directives implies conformity to the following European Standards:

1999/5/EEC	Radio & Telecommunication Terminal Equipment Directive (R&TTE) EN 301 511 / EN 300 328 Specific Absorption Rate (SAR) Standard: EN 50360, EN 50361
2006/95/EC	Low Voltage Directive (LVD) IEC 60950-1:2001 EN60950-1/A11:2004
89/336/EEC	Electromagnetic Compatibility (EMC-Directive) Standard: EN 301489-1/7/17

The manufacturer cannot be held responsible for modifications made by the User and the consequences thereof, which may alter the conformity of the product with the CE Marking.

Hereby, Mio Technology Limited, declares that this N171 is in compliance with the essential requirements and other relevant provisions of Directive 1999/5/EC.

### USA

#### Federal Communications Commission Radio Frequency Interference Statement

##### NOTE:

This equipment has been tested and found to comply with the limits for a Class B digital device pursuant to Part 15 of the FCC Rules. These limits are designed to provide reasonable protection against harmful interference in a residential installation. This equipment generates, uses, and can radiate radio frequency energy and, if not installed and used in accordance with the instructions, may cause harmful interference to radio communications. However, there is no guarantee that interference will not occur in a particular installation. If this equipment does cause harmful interference to radio or television reception, which can be determined by turning the equipment off and on, the user is encouraged to try to correct the interference by one or more of the following measures:

- Reorient or relocate the receiving antenna.
- Increase the separation between the equipment and receiver.
- Connect the equipment into an outlet on a circuit different from that to which the receiver is connected.
- Consult the dealer or an experienced radio/TV technician for help.

This device complies with Part 15 of the FCC Rules. Operation is subject to the following two conditions: (1) This device may not cause harmful interference, and (2) this device must accept any interference received, including interference that may cause undesired operation.

---

Any changes or modifications not expressly approved by the manufacturer could void the user's authority to operate the equipment.

**IMPORTANT NOTE:**

This device is designed and manufactured not to exceed the emission limits for exposure to radio frequency (RF) energy set by the Federal Communications Commission of the U.S. Government.

The exposure standard for wireless mobile phones employs a unit of measurement known as the Specific Absorption Rate (SAR). This device meets the government's requirements for exposure to radio waves. While there may be differences between the SAR levels of various phones and at various positions, they all meet the government requirement.

For body worn operation, this device has been tested and meets the FCC RF exposure guidelines for use with an accessory that contains no metal and the positions the handset a minimum of 1.5 cm from the body. Use of other enhancements may not ensure compliance with FCC RF exposure guidelines. If you do not use a body-worn accessory and are not holding the device at the ear, position the handset a minimum of 1.5 cm from your body when the device is switched on.

**Canada**

**IC Radiation Exposure Statement**

This device is compliance with SAR for general population/uncontrolled exposure limits in IC RSS-102 and had been tested in accordance with the measurement methods and procedures specified in IEEE 1528. This equipment should be installed and operated with minimum distance 1.5cm between the radiator and your body.

**Safety precautions**

- Prolonged listening of music in maximum volume can damage the ears.
- This device is not for life saving. Use the device in ways that will not cause accidents, personal injury or property damage.

**About charging**

- Use only the charger supplied with your device. Use of another type of charger will result in malfunction and/or danger.
- This product is intended to be supplied by a LISTED Power Unit marked with "LPS", "Limited Power Source" and output rated + 5 V dc / 1.0 A".
- Use a specified battery in the equipment.

**About the charger**

- Do not use the charger in a high moisture environment. Never touch the charger when your hands or feet are wet.
- Allow adequate ventilation around the charger when using it to operate the device or charge the battery. Do not cover the charger with paper or other objects that will reduce cooling. Do not use the charger while it is inside a carrying case.
- Connect the charger to a proper power source. The voltage requirements are found on the product case and/or packaging.
- Do not use the charger if the cord becomes damaged.



- 
- Do not attempt to service the unit. There are no serviceable parts inside. Replace the unit if it is damaged or exposed to excess moisture.

### About the battery

- Use a specified battery in the equipment.
- **CAUTION:** This unit contains a non-replaceable internal Lithium Ion battery. The battery can burst or explode, releasing hazardous chemicals. To reduce the risk of fire or burns, do not disassemble, crush, puncture, or dispose of in fire or water.
- Important instructions (for service personnel only)
  - **Caution:** Risk of explosion if battery is replaced by an incorrect type. Dispose of used batteries according to the instructions.
  - Replace only with the same or equivalent type recommended by the manufacturer.
  - The battery must be recycled or disposed of properly.
  - Use the battery only in the specified equipment.

### About SAR information

The highest SAR value for the device as reported to the FCC and CE when tested for use is 0.694 W/kg for PCS1900, 0.933 W/kg for GSM900, 0.368 W/kg for DCS1800, and when worn on the body is 0.694 W/kg for PCS1900, 0.933 W/kg for GSM900 and 0.368 W/kg for DCS1800. (Body-worn measurements differ among device models, depending upon available enhancements and FCC requirements.)

To reduce the effects of the radio frequency energy on the human body, use the phone feature with care. For example, make short calls as possible as you can.

### About the electrostatic discharge

Electrostatic discharges can interfere with the normal functioning of the electronic devices. Your equipment can behave abnormally owing to such an event, resulting in the possible data corruption or loss of unsaved data. To recover from this, reset your equipment.

To avoid losing data due to electrostatic discharges or other types of events, it is recommended that you regularly save and backup data.

### About the phone

- Use a phone headset or pull over your car first if using the device when driving.
- Your device is a low-power RF (radio frequency) device. It receives and sends out RF signals when the phone feature is turned on. Therefore, be careful of the following:
  - Most RF devices are shielded from RF signals. However, the device may still interfere with or get interfered by nearby devices, such as a TV set, radio, or computer.
  - Turn off the phone feature where posted notices are set up to avoid interference or danger.
  - Turn off the phone feature near hospitals or medical equipment (such as pacemakers or hearing aids) to avoid interference.
  - Turn off the phone feature near gas stations, fuel depots, chemical factories, or blasting areas.
  - Turn off the phone feature on an aircraft to avoid interference with the flight instruments for possible danger.