

Quick Start Guide

Part 1: Hardware Installation

1

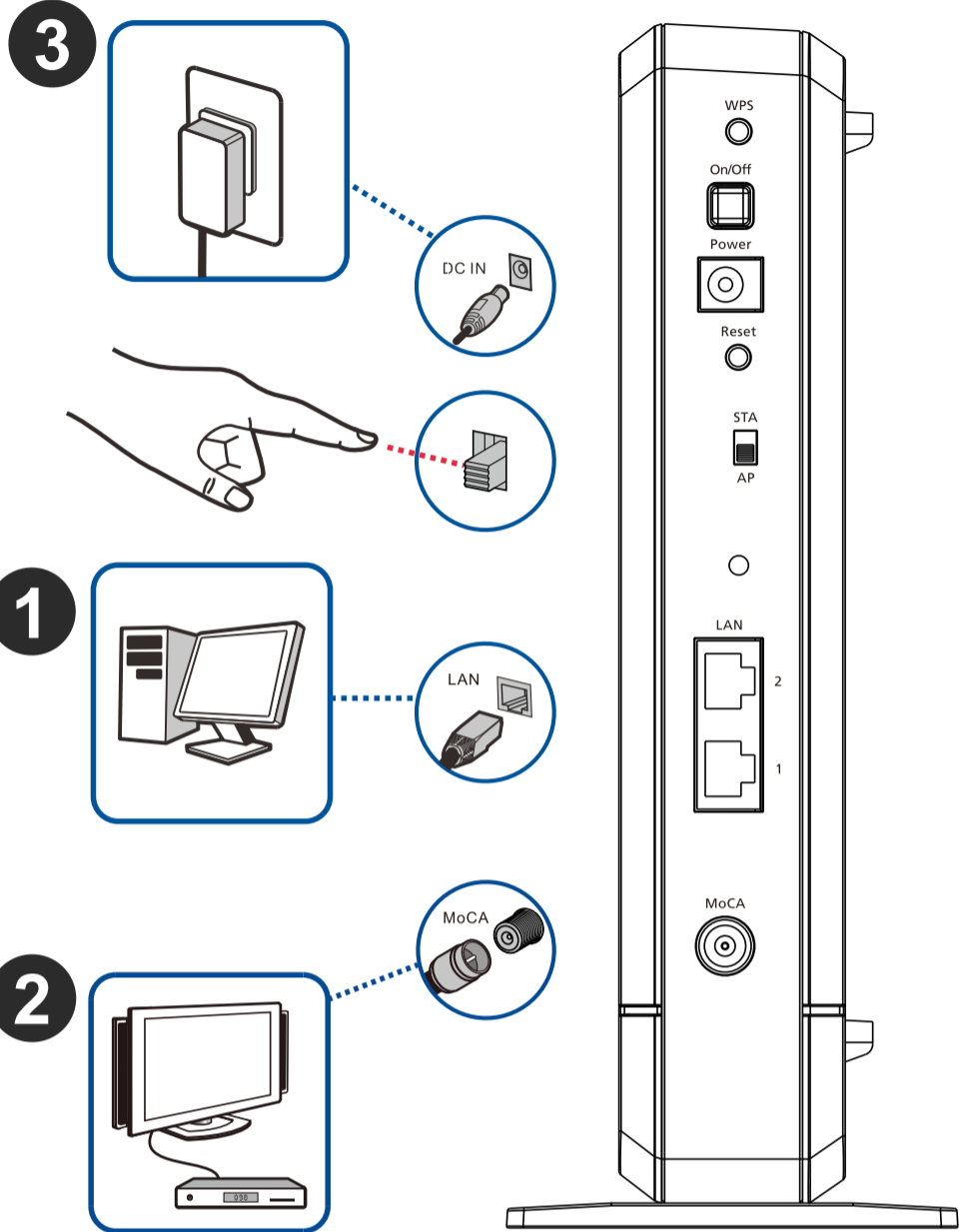
Connect one end of the provided Ethernet cable to a LAN port on the MoCA Bridge and the other end to a computer, hub, or switch.

2

Connect a coaxial cable to the MoCA port on the MoCA Bridge.
Connect to a cable modem or a cable port in your home or office for a WAN connection.
Or connect to a device such as a set-top box for a LAN connection.

3

Connect the provided power adapter to the MoCA Bridge and plug it into a power source.
Press the On/Off button to the On position and ensure the power LED comes on.



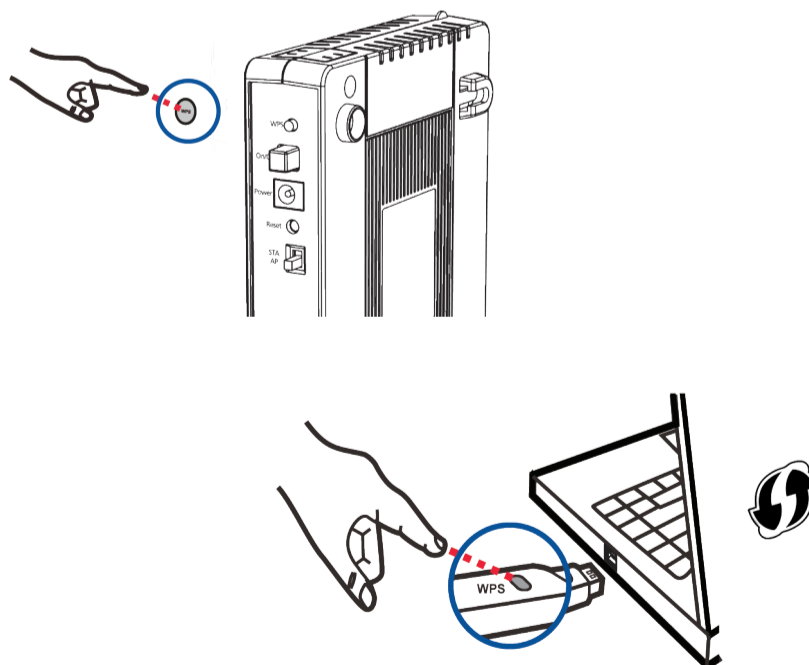
Part 2: Connecting Wireless Device with WPS Button

1

Press the WPS button on the MoCA Bridge.

2

Within 2 minutes, press your preferred wireless device's WPS button.



Part 3: Wall Mounting

1

Rotate the stand 90 degrees clockwise or counterclockwise.

2

Use a hammer to tap the screw anchors into the holes.

3

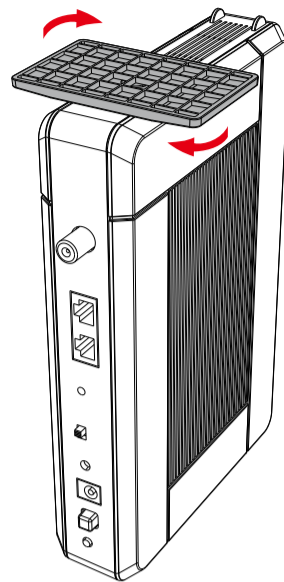
Insert and slowly screw the screws into the anchors (or the holes if you are not using anchors). Make sure the screws are snugly fastened to the wall. They need to hold the weight of the MoCA Bridge with the connection cables. Do not screw the screws all the way into the wall. Leave a small gap of about 0.5 cm between the heads of the screws and the wall.

4

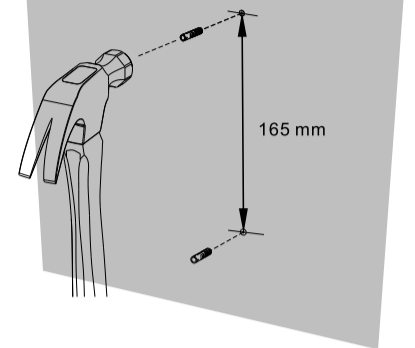
Align the holes on the back of the MoCA Bridge with the screws on the wall.

Hang the MoCA Bridge on the screws.

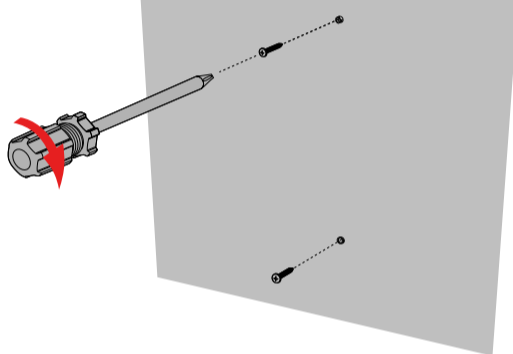
1



2



3



4

