

BEFORE OPERATION

PRINTER SETUP PROCEDURE

Before printing, follow the printer setup listed below.

Position the adjustable paper guides.	(See page 10.)
↓	
Install the print paper to this printer.	(See pages 11 to 12.)
↓	
Install the ink ribbon to this printer.	(See pages 13 to 14.)

↓	
Connect the printer to a personal computer.	(See page 16.)

Make sure to close the printing unit when the setup procedure is completed.

PRECAUTIONS

FEATURES

PREPARATION

TROUBLE-SHOOTING

OTHERS

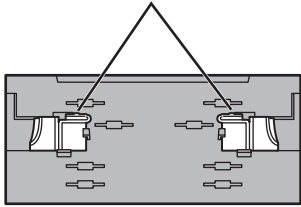
CONTENTS

BEFORE OPERATION

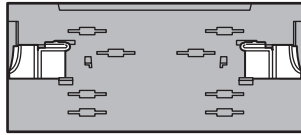
POSITIONING OF ADJUSTABLE PAPER GUIDE

Adjust the paper guides according to the paper width.

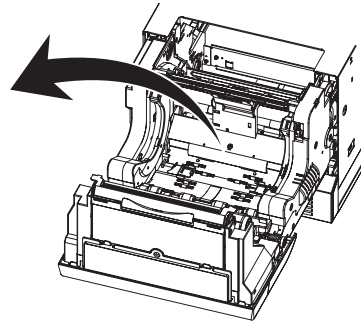
Adjustable paper guides



For 9x13(3.5x5") or 13x18(5x7") size paper (5"-width)

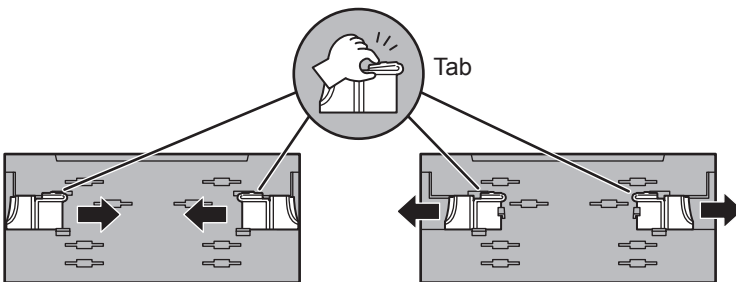


For 10x15(4x6"), 15x20(6x8") or 15x23(6x9") size paper (6"-width)



■ HOW TO SET THE ADJUSTABLE PAPER GUIDES

- 1 Pinch the tab on the adjustable paper guide and slide it right or left.



- 2 Slide the paper guide until it stops. The paper guide will snap into place.

- 3 Slide other paper guide in the similar way.

NOTE

- Make sure to set the adjustable paper guides to the size of the paper width. When they are not positioned properly, a malfunction such as paper jam and misaligned printing position may occur.

NOTE

- When you use 10x15 (4x6"), 15x20 (6x8") or 15x23 (6x9") size paper (having width of 152 mm) after using 9x13 (3.5x5") or 13x18 (5x7") size paper (having width of 127 mm) for a long time or printing such paper in large quantities, thermal head cleaning may be required. For cleaning of the thermal head, see page 21. In some cases, the print quality is not improved though thermal head cleaning is carried out. In this case, replacement of the thermal head is required. For detail, consult your dealer.

PRECAUTIONS

FEATURES

PREPARATION

TROUBLE-SHOOTING

OTHERS

CONTENTS

PRINT PAPER INSTALLATION

PRECAUTIONS

FEATURES

PREPARATION

TROUBLE-SHOOTING

OTHERS

CONTENTS

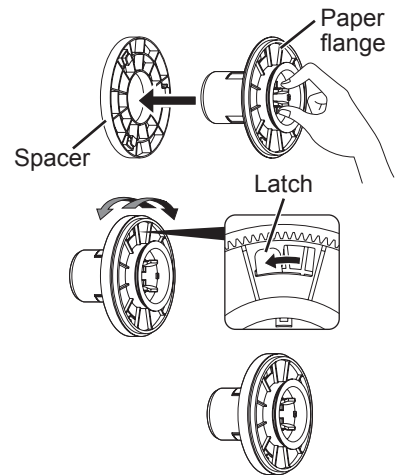
Spacers

■ See the Quick Setup Guide on how to use the spacers.

How to attach the spacers

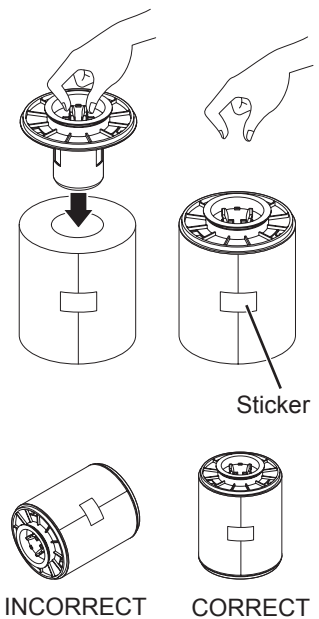
1. Insert the spacer with the paper flange's stoppers retracted.
2. Turn the spacer until the latches are locked.

When you remove the spacers from the paper flanges, follow the above procedure in reverse.



1 Attach the supplied paper flanges to both sides of the print paper.

When you pinch the latches on the paper flange, the stoppers retract into the shaft. Attach the flanges to the print paper with the stoppers retracted. Make sure that the flanges are attached to the print paper securely, and release the latches.



NOTE

- Take care not to pinch your fingers.
- Do not remove the sticker on the print paper roll yet.
- Do not loosen the paper roll. Any slack in the print paper may degrade the print quality.

CAUTION

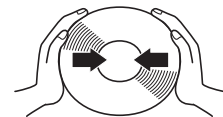
- When placing the print paper, keep the print paper upright.
- When you put the print paper sideways, it may roll and fall. This may cause injury.

NOTE

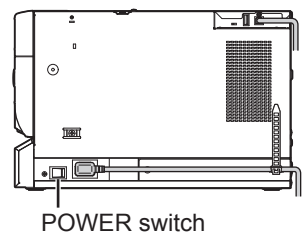
- Fingerprints or dust on the paper's surface may degrade print quality and cause paper jams.

NOTE

- When the paper flange cannot be attached due to the deformation of the print paper, reshape the print paper manually before attaching the flange.

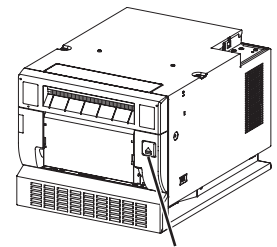


2 Press the POWER switch on the right side panel to turn on the power.



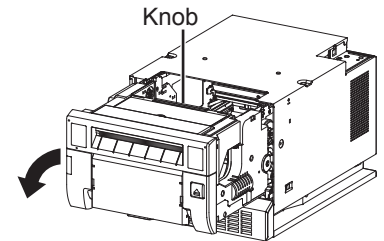
BEFORE OPERATION

- 3 After the POWER indicator's color has changed from orange to green, press the OPEN button to release the printing unit out.



OPEN button

- 4 Remove the paper strip bin and then pull the knob to open the door.



Knob

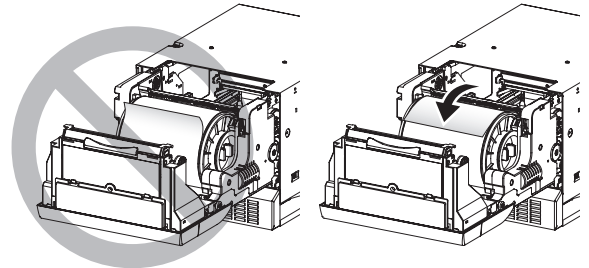
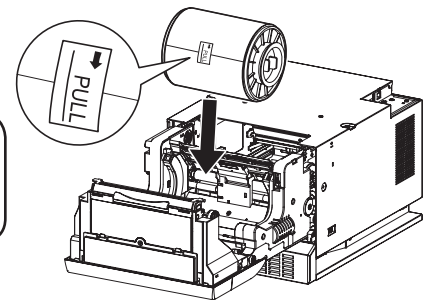
- 5 Install the print paper into the unit.
Place the printing paper in the correct orientation.
Make sure the paper roll is firmly installed.

CAUTION

- Do not push down on the printing unit or the door. If you push down on the printing unit or the door when they are open, this unit may fall and it can cause damage or injury.

NOTE

- Make sure to turn on the power before installing the print paper. Otherwise, a paper jam may occur.
- Load the paper roll slowly into the unit. If it is dropped along the ditches, the unit or accessories may be damaged.



Direction of paper insertion

- 6 Remove the sticker and insert the print paper between the roller and guide as shown right to feed it. When the buzzer sounds, stop the paper feeding.

Remove the sticker before inserting the print paper between roller and guide. Make sure to insert the paper straight.
Buzzer continues to sound until the printing unit is closed.

NOTE

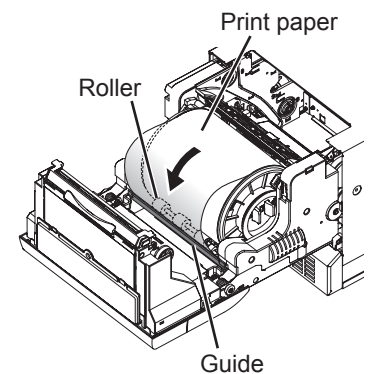
- Keep the rollers clean. Dirt on the rollers may produce poor print quality.

NOTE

- When taking the print paper out, pull it up toward you by holding the paper flanges.
- Make sure to turn on the power before replacing the print paper.
- Make sure to eliminate any slack from the print paper. If you carry out the following steps without eliminating the slack, the print paper may be damaged.

NOTE

- If you continue to feed the print paper inward after the buzzer sounds, it may cause a paper jam.



- 7 Close the door.

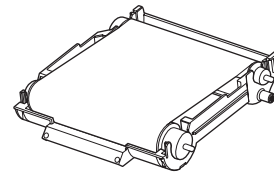
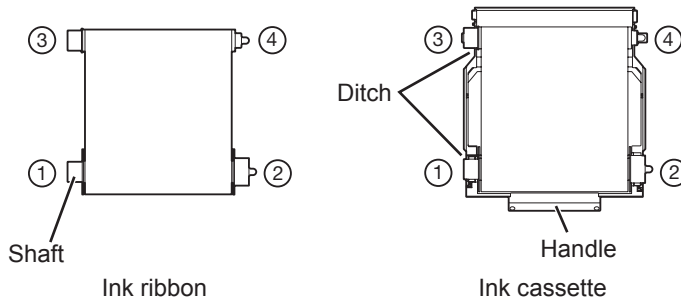
INK RIBBON INSTALLATION

After installing the print paper, install the ink cassette into this unit.
Before installing the ink cassette into this unit, load the ink ribbon in the ink cassette.

NOTE

- Place the ink cassette on a flat surface, when loading the ink ribbon.
- Select a place that is free of dust when loading the ink ribbon. Dust or dirt settling on the ink ribbon results in poor print quality.
- Make sure that the shafts of the ink ribbon fit into the ink cassette firmly.

- 1 Load the ink ribbon in the ink cassette as shown below.**
Make sure to load it in the correct position.



Make sure to set the ink ribbon roller to the ditches firmly.
Turn the shaft to eliminate any slack.


- 2 Place the ink cassette containing the ink ribbon in the position as shown in the illustration.**

To insert the ink cassette, align the protrusions on both sides of the cassette with the right and left guides inside the printing unit and slide it in a slanting direction.
Mount the ink cassette to the back firmly by holding the handle.


NOTE

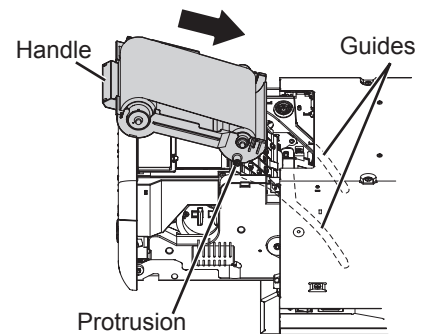
- Do not touch the thermal head. Fingerprints or dust on the thermal head will degrade the print quality.

CAUTION

-  Do not touch the thermal head right after printing because it is extremely hot. Otherwise you may get burned or injured.

NOTE

-  Note that the thermal head is quite sensitive to static electricity. When you touch the thermal head while carrying static electricity on your body, the thermal head may be damaged.

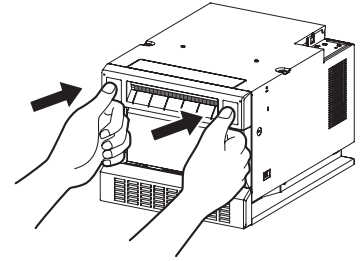


BEFORE OPERATION

3 Push the printing unit to close.

Close the printing unit by pushing the right and left sides of the unit from the front with both hands.

When a new paper is loaded and the printing unit is closed with the power turned on, the paper will be automatically fed and cut.



CAUTION

- When closing the printing unit, be careful not to get your hands caught between the printer and the printing unit. Otherwise, you may get injured.

NOTE

- When closing the printing unit, push it until a click is heard.
- If the PAPER RIBBON indicator illuminates when the printing unit is closed, the print paper may have not been installed correctly. In this case, open the printing unit to make sure that the print paper has been installed correctly. Then close the printing unit again.
- When the paper roll is reinstalled more than three times, the print paper may be used up earlier than the ink ribbon.

Installation of the print paper and the ink ribbon is completed.

NOTE

- Make sure to replace the print paper and the ink ribbon simultaneously.
- Empty the paper strip bin frequently to prevent jamming the strips at the print outlet. Whenever you replace the paper and ink ribbon, make sure to throw away the paper strips in the paper strip bin.
- Whenever you replace the print paper and the ink ribbon, clean the thermal head and the platen roller. For the cleaning procedures, see ["CLEANING"](#) (on pages 21 and 22).

PRECAUTIONS

FEATURES

PREPARATION

TROUBLE-
SHOOTING

OTHERS

CONTENTS

HANDLING OF PAPER / INK RIBBON SET

BEFORE PRINTING

- Fingerprints or dust on the paper printing surface may produce poor print quality and cause paper jams.
- When the print paper or ink ribbon is abruptly transferred from a cool place to a hot place, vapor or dew is generated on the surface, which causes paper jams or degraded print quality. Leave the print paper in the room to stabilize its temperature before use.
- If you repeat the PRINT PAPER INSTALLATION procedure more than the designated number of times, the indicated number of prints may not be made. In addition, if you replace the print paper before it is used up, the indicated number of prints may not be made.

AFTER PRINTING

- If the paper absorbs nonvolatile organic solvents (alcohol, ester, ketone, etc.) the print may be discolored.
- Discoloration of prints is accelerated if the print paper comes into contact with soft vinyl chloride such as transparent tape.
- Avoid storing prints in direct sunlight or places with high humidity.

STORAGE OF PAPER / INK RIBBON SET

- Do not store the print paper and ink ribbon in the container made of soft polyvinyl chloride. They may be discolored because of chemical reaction.
- Store the print paper and ink ribbon out of direct sunlight and away from heating appliances in a cool, dark place where the temperature is 5°C to 30°C and the humidity is 20% to 60% RH.

PRECAUTIONS
FEATURES
PREPARATION
TROUBLE-SHOOTING
OTHERS
CONTENTS