

**Using ICC ETH-1000
EtherNet/IP Interface with
Mitsubishi iQ PLC**

Quick
Start Guide



Contents

| | |
|--|-------|
| Contents | i |
| FURTHER READING REFERENCE LIST | ii |
| Chapter 1 Introduction | 1-1 |
| Chapter 2 System Overview | 2-1 |
| Chapter 3 Connecting Devices to the Network | 3-1 |
| 3.1 Changing the IP Address of the ControlLogix System | 3-1 |
| 3.2 Changing the IP Address of the ICC ETH-1000 Module | 3-3 |
| 3.3 Changing the IP Addresses of the iQ PLC Built-in Ethernet Port | 3-6 |
| 3.4 Configuring the External Ethernet Module in the iQ System | 3-8 |
| Chapter 4 ControlLogix PLC Project Configuration | 4-1 |
| 4.1 Adding the 1756 ENBT Module | 4-1 |
| 4.2 Adding the ICC Module | 4-4 |
| Chapter 5 ETH-1000 Configuration | 5-1 |
| 5.1 Configuring the EtherNet/IP Implicit Messaging Communication | 5-1 |
| 5.2 Configuring the MELSEC Protocol | 5-3 |
| 5.2.1. Configuring Connection Objects | 5-3 |
| 5.2.2. Configuring Service Objects | 5-4 |
| 5.2.3. Configuring the Connection Object for QJ71E71 Ethernet Module | 5-8 |
| 5.2.4. Calculating the ICC ETH-1000 DB Addresses | 5-9 |
| Chapter 6 Using EtherNet/IP Explicit Messaging | 6-1 |
| Chapter 7 Terminology | 7-1 |
| Revisions | Rev-1 |

FURTHER READING REFERENCE LIST

Mitsubishi

Q Corresponding MELSEC Communication Protocol Reference Manual SH(NA)-080008-K

QnUCPU User's Manual Communication via Built-in Ethernet Port SH(NA)-080811ENG-B

Q Corresponding Ethernet Interface Module User's Manual (Basic) SH (NA)-080009-N

ICC

Instruction Manual: ETH-1000 Multiprotocol Ethernet / RS-485 Gateway

This Page is intentionally left blank!

Chapter 1 Introduction

This document provides instructions and examples on how to configure a system consists of Rockwell ControlLogix PLC, an ICC ETH-1000 Gateway, and Mitsubishi iQ PLC system. An Example of the system configuration is shown in Figure 1 below.

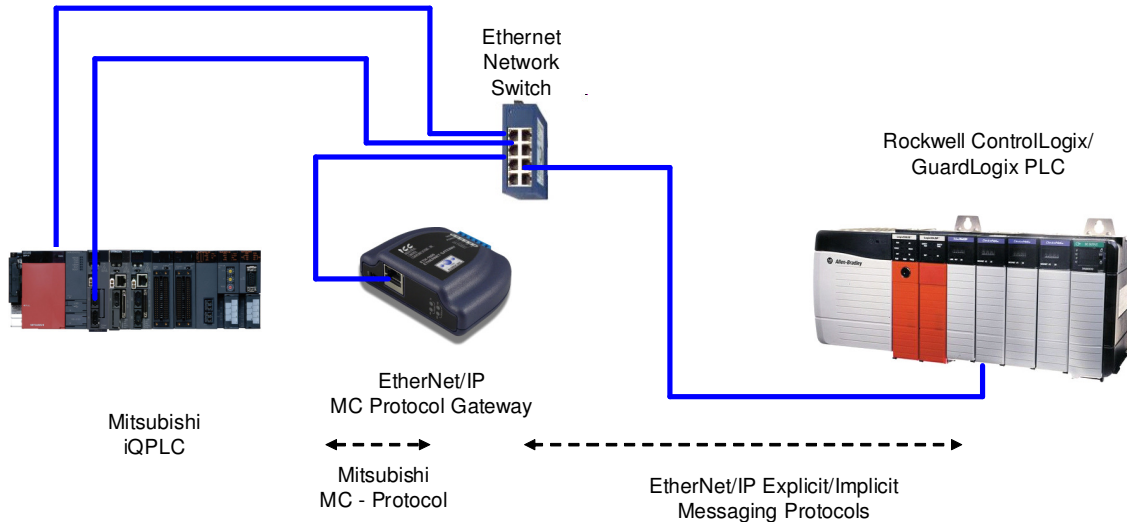


Figure 1 EtherNet/IP Connectivity – Rockwell PLC to Mitsubishi iQ PLC

The system configurations enable Rockwell PLCs to read and write both bit and register data of Mitsubishi iQ PLC using either EtherNet/IP Implicit or Explicit Messaging protocols. Both the built-in Ethernet port on an iQ CPU and an external Ethernet module can be used for this communication.

ICC ETH-1000 Gateway module is used to convert the EtherNet/IP protocol to Mitsubishi MELSEC Communication (MC) Protocol that is supported by Mitsubishi iQ PLCs.

It is assumed that the user of this guide is familiar with the Rockwell RSLogix5000 environment, the operation of Mitsubishi iQ PLCs, and has sufficient knowledge of the ICC ETH-1000 Gateway. It is critical for the users to refer to the manuals when setting up the system parameters for EtherNet/IP applications.

| | |
|---|--|
| 1 | Introduction |
| 2 | System Overview |
| 3 | Devices to the Network |
| 4 | ControlLogix PLC Project Configuration |
| 5 | ETH-1000 Configuration |
| 6 | Using EtherNet/IP Explicit Messaging |
| 7 | Terminology |

Chapter 2 System Overview

A Verification System is used as a test bed for verifying the steps documented in this Quick Start guide. The Verification System is shown in Figure 2 below with the IP address assignments of all the devices.

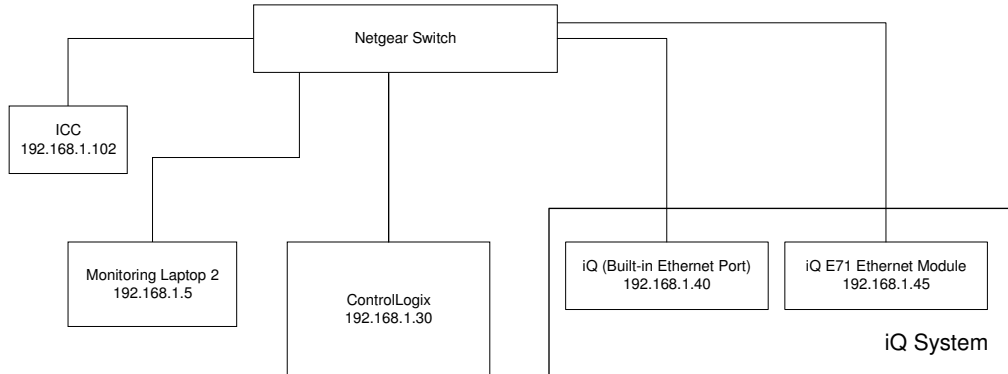


Figure 2 Architecture of an Example Verification System

The Verification System consists of one monitoring PC (e.g. Monitoring Laptop 1), a ControlLogix system, an ICC ETH-1000 module, and one Mitsubishi Q13UDEH PLC system.

The following list contains high-level steps to establish proper EtherNet/IP communication of this Verification System. Each of these steps will be further detailed in subsequent chapters

1. Connect the programming/monitoring PC, Rockwell PLC, ICC ETH-1000, and Mitsubishi PLC system to the Ethernet network
 - a. Configure all devices to have proper IP addresses and subnet masks as shown above.
 - b. Ensure that RSLogix5000, ICC Gateway Configuration Utility, and Mitsubishi GX Works2 or GX Developer software packages are installed on the programming PC.
2. Create a project using the RSLogix5000 software to interface with the Mitsubishi PLC.
 - a. Add the ICC ETH-1000 as a Generic Ethernet Module in the RSLogix5000 project.
3. Configure ICC ETH-1000
 - a. Configure EtherNet/IP Parameters
 - b. Map the ControlLogix Tags for the ETH-1000 to the internal ETH-1000 database locations
 - c. Map ICC ETH-1000 internal database locations to proper controller register and/or bit locations for the PLC.
4. Configure iQ system
 - a. Configure the Built-in Ethernet port on the iQ CPU
 - b. Configure the Ethernet port on an external Q71E71 module if necessary

Chapter 3 Connecting Devices to the Network

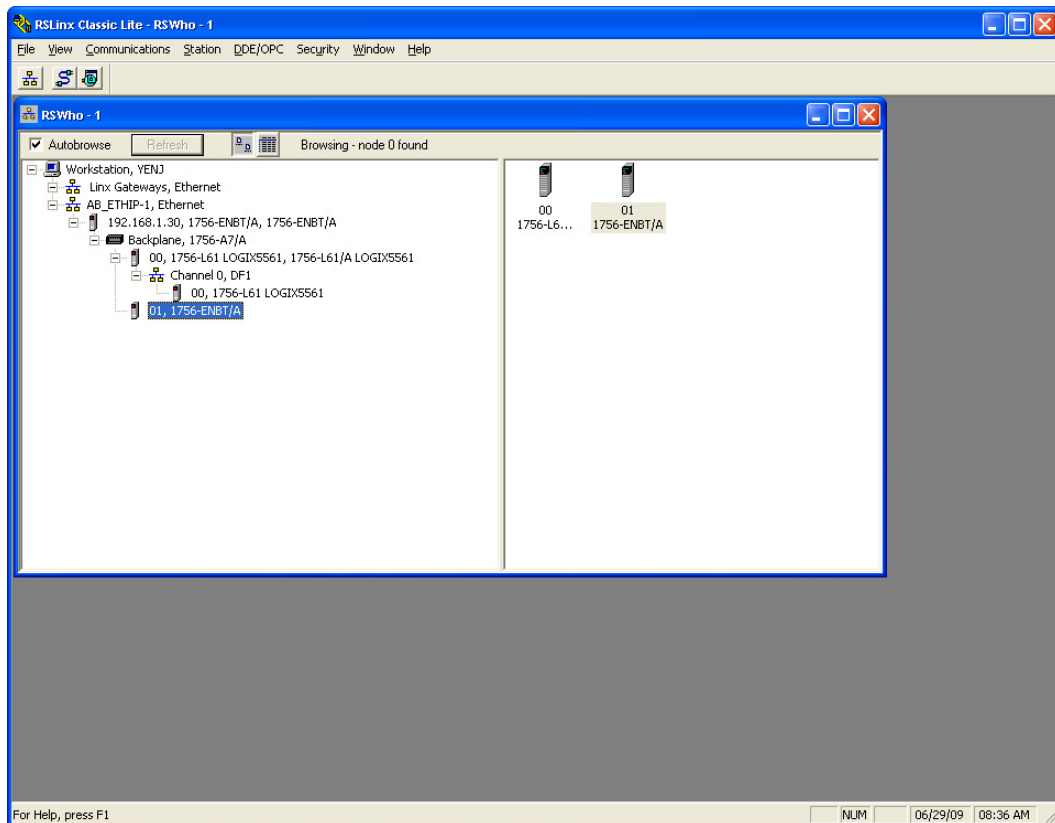
The steps of configuring the IP addresses of the ControlLogix PLC system, the ICC ETH-1000 module, and the PLC are documented in this chapter.

3.1 Changing the IP Address of the ControlLogix System

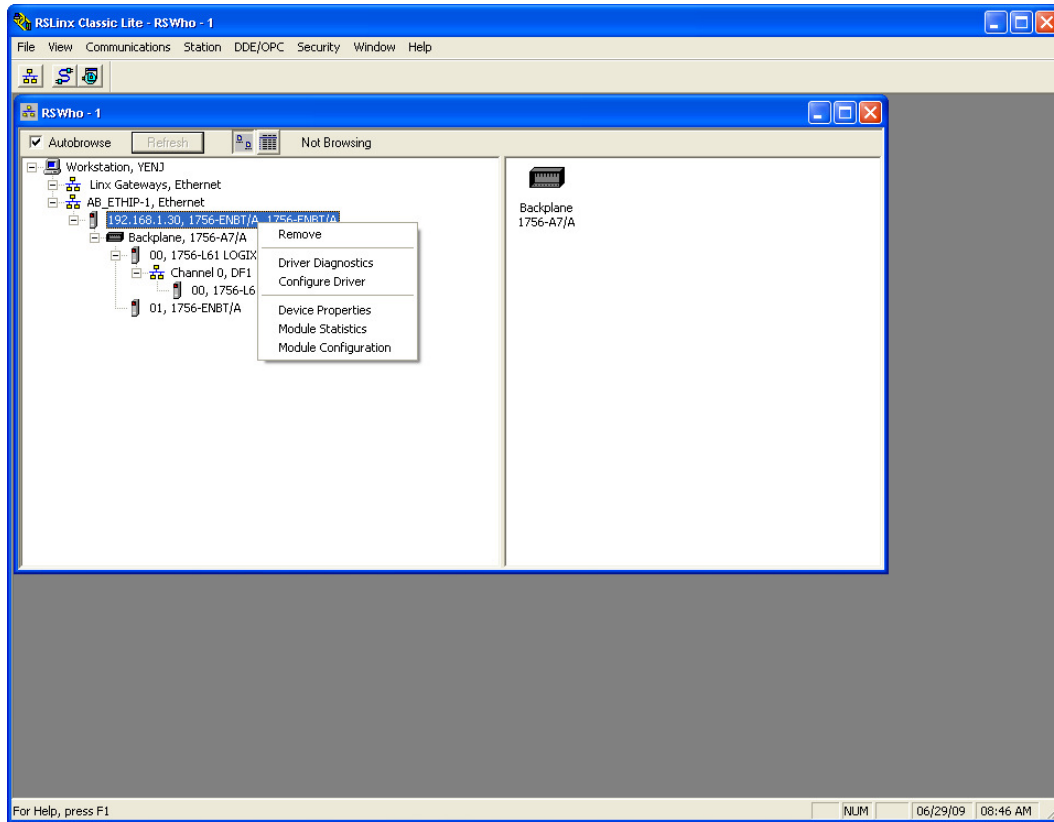
The minimum configuration of a ControlLogix system consists of a ControlLogix chassis (e.g. 1756-A7), a power supply (e.g. 1756-PA72), a ControlLogix Controller (e.g. 1756-L61), and an EtherNet/IP module (e.g. 1756-ENBT).

The steps here document the procedure to modify the IP address of a 1756-ENBT module to add the ControlLogix system on the same network with the Mitsubishi PLC and the ICC ETH-1000 module. It is assumed that there is already an IP address assigned to the ENBT module. If configuring a brand new ENBT module is necessary, please consult the user manual of the Rockwell ENBT module.

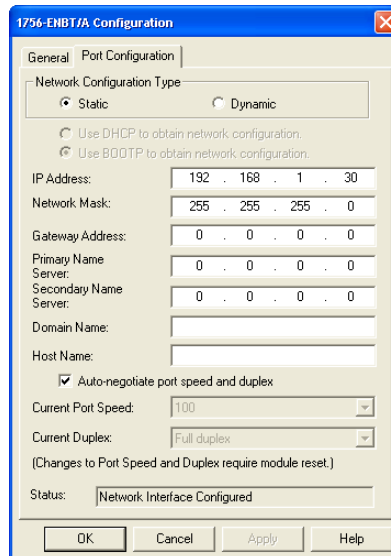
1. Power on the Rockwell system and monitor the display scrolling across the front of the ENBT module. If the module is working properly, the message “OK Rev x.x.x IP1.IP2.IP3.IP4” should scroll across the display. Rev x.x.x is the revision number of the module firmware, and IP1.IP2.IP3.IP4 forms the current IP address of the module. For example, the message is “OK Rev 2.3.1 192.168.1.30”
2. Connect a configuration PC on the network. Change the IP address of the PC to be in the same subnet as the 1756 ENBT module.
 - *Note: it is assumed that changing the IP address on a PC is known by the users of this manual. If required, please consult Windows OS Help File.*
3. Open the RSLinx Classic on the configuration PC and select Communications -> RSWho and expand the tree to see the following screen showing the system configuration:



4. Right-Click on the ENBT Module and select “Module Configuration” from the drop down list:



5. Under the “Port Configuration” tab, select the Network Configuration Type to be “Static”, and one can modify the IP address and the Network Mask to the desired values. Click “OK” and save the new IP address configuration. The new IP address should scroll across the front of the ENBT module.



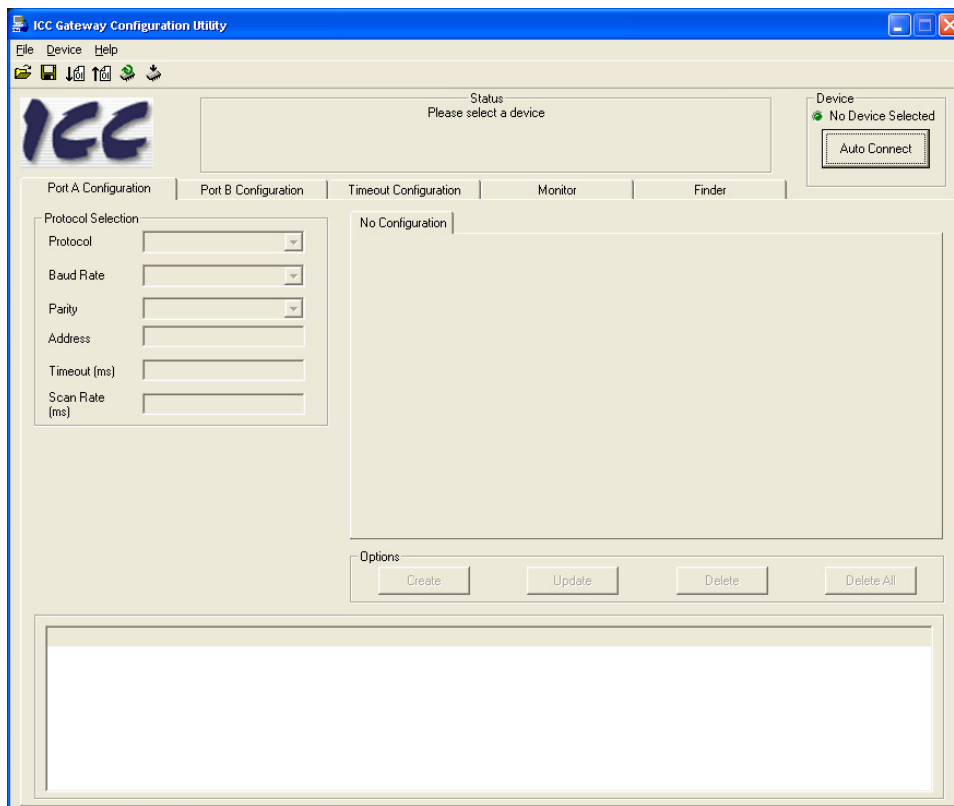
- Once the new IP address is set, it is very likely (depending on what IP address and Network mask were assigned to the ENBT module) that the Configuration PC will no longer be able to communicate with the ENBT module. The IP address of the Configuration PC will need to be changed to be in the same subnet of the ENBT module before the communication can be re-established.

3.2 Changing the IP Address of the ICC ETH-1000 Module

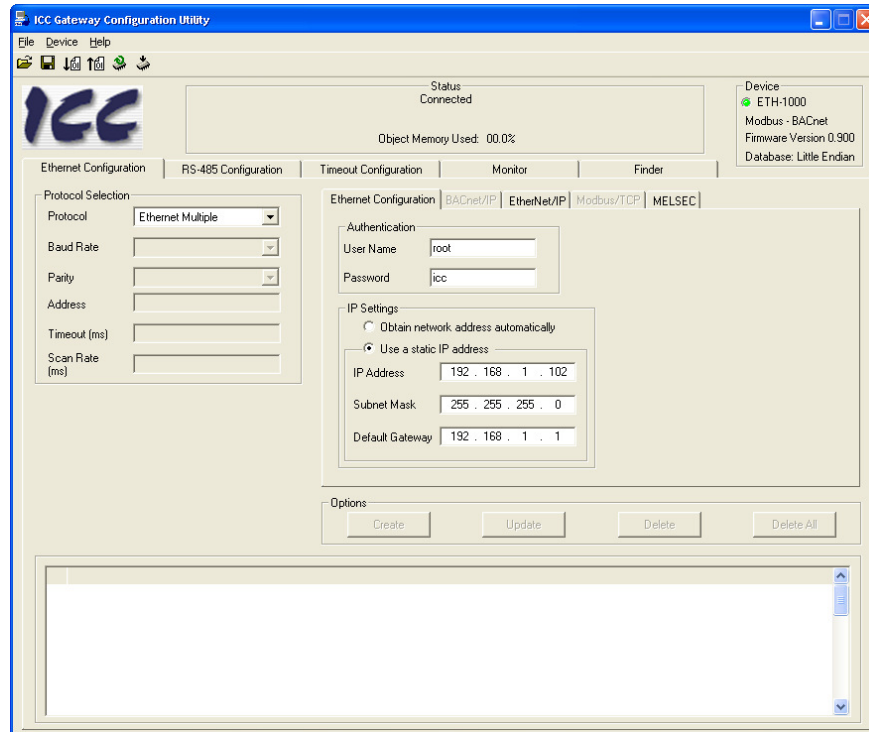
The “ICC Gateway Configuration Utility” should be loaded on a Configuration PC that is used to configure the ICC ETH-1000. The ETH-1000 module can be powered using an USB connection, a Power Over Ethernet (POE) connection or an external 7- 24V power supply.

Using the USB connection between the Configuration PC and the ICC ETH-1000 is the most straightforward method to perform the initial configuration of the ICC Module.

- Launch the “ICC Gateway Configuration Utility” on the Configuration PC and connect a USB cable to the ICC device.

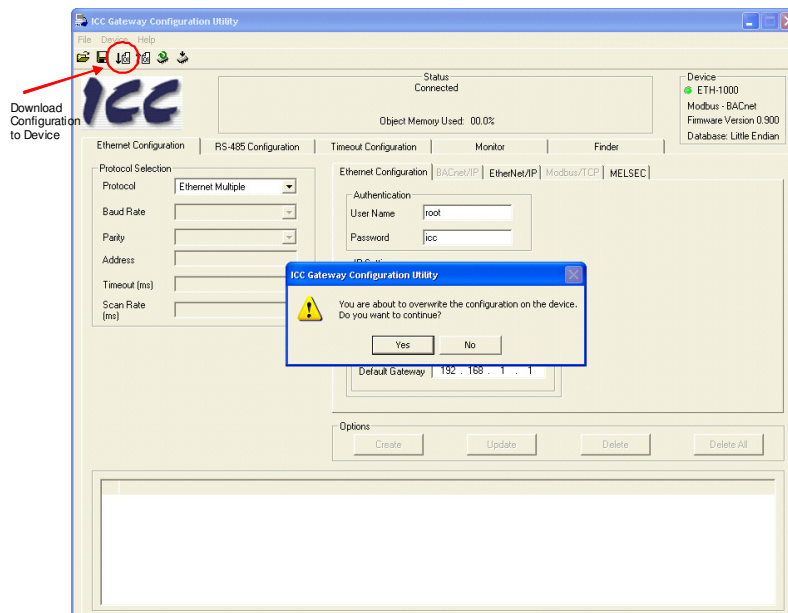


- Click the “Auto Connect” button, and the ETH-1000 module will be connected, and the screen will be populated with the current information:

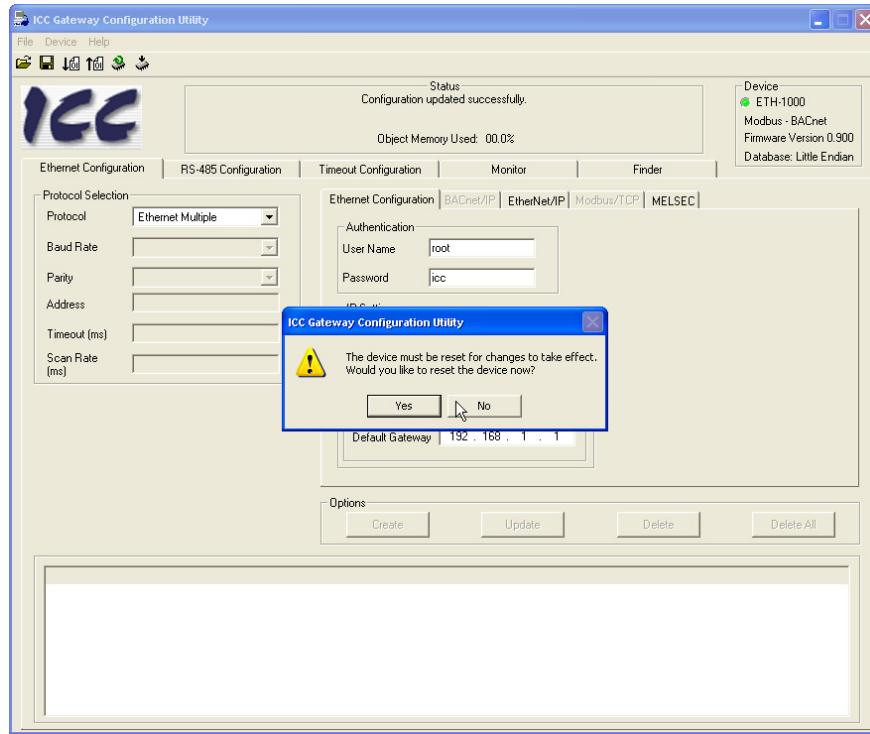


The proper device type is shown with a green LED lit showing the connection has been established. The firmware type, version, and Database type are also shown on the screen.

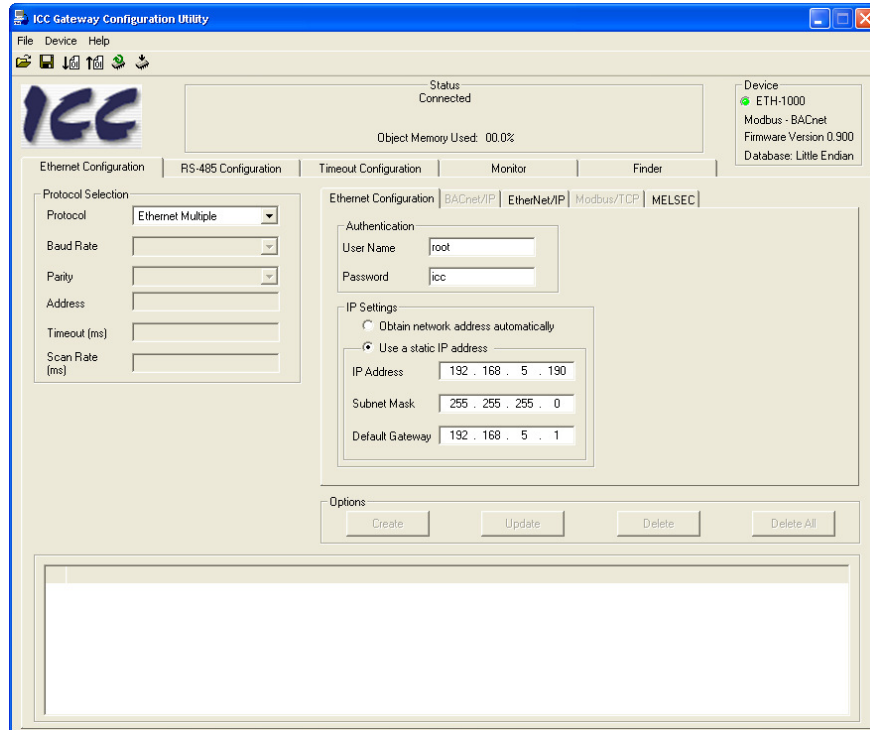
- The user can modify the IP address and Subnet Mask information on this screen.
- After making the changes, select the Download Configuration to Device button to load the new configuration to the ETH-1000. A warning message will pop-up, select OK to continue download the new IP address



- After the download, the system will need to be reset for the changes to take effect. Click “Yes” to the pop-up message and the ETH-1000 will go through the reset sequence



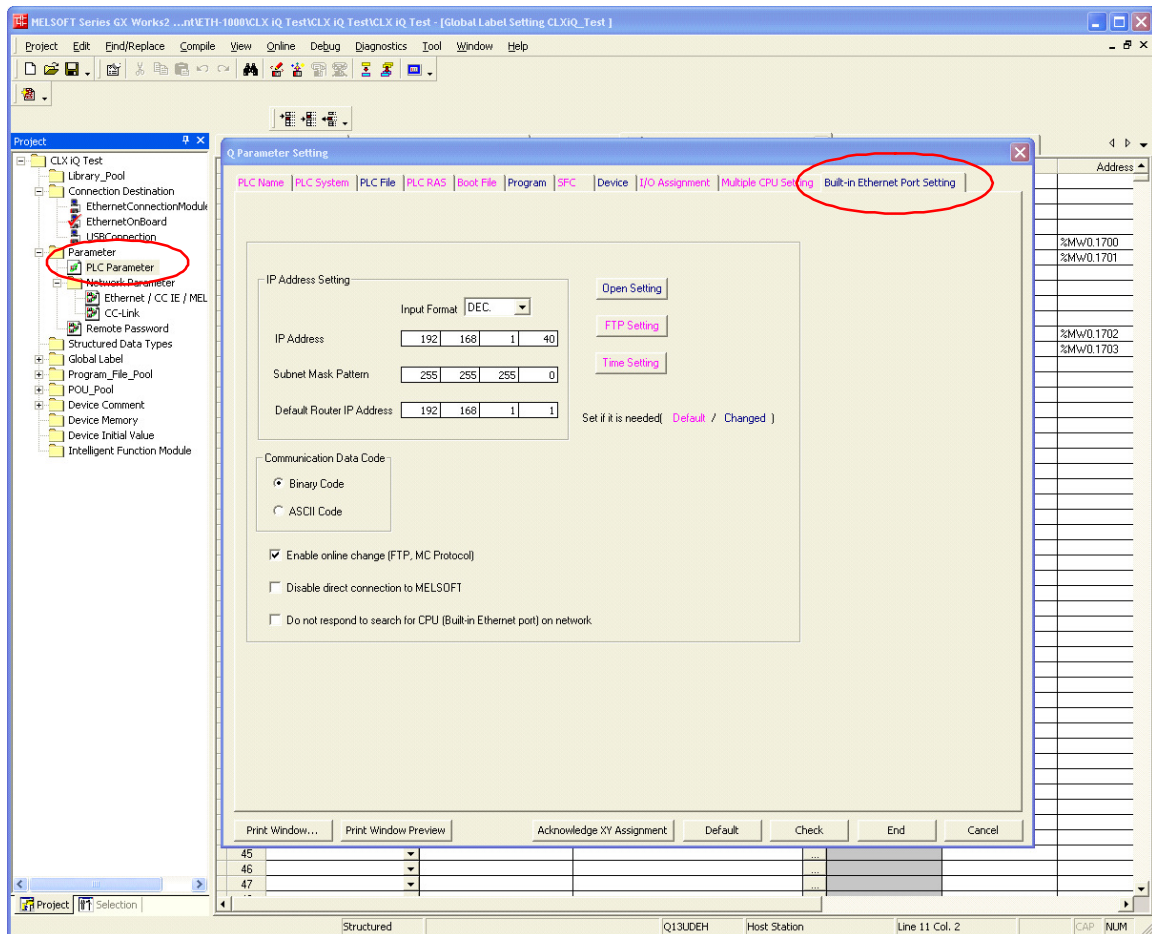
- After the ETH-1000 system reboot, the screen should show the new IP address. In this example, the IP address was changed to 192.168.5.190.



3.3 Changing the IP Addresses of the iQ PLC Built-in Ethernet Port

The following are steps to change the IP address of the iQ PLC Built-in Ethernet Port:

1. Open the GX Works2 on the Configuration PC and create a new project for the appropriate CPU Module (e.g. Q13UDEH in this example).
2. Select the PLC Parameter on the Project Tree which will open the “Q Parameter Setting” window. Then select the “Built-in Ethernet Port Setting” tab.
 - a. Configure the IP address, Subnet Mask and Default Router IP address to the desired settings.
 - b. Change the IP address to the desired address and then select the Enable Online Change (FTP, MC Protocol) Check box.



- c. Click the Open Setting box and enter the first channel as MC Protocol with a proper Host Station Port number (In this example, the Port Number is set at Hex 5001)

Built-in Ethernet Port Open Setting

| | Protocol | Open System | TCP Connection | Host Station Port No. | Destination IP Address | Destination Port No. |
|----|----------|--------------------|----------------|-----------------------|------------------------|----------------------|
| 1 | TCP | MC Protocol | | 5001 | | |
| 2 | TCP | MELSOFT Connection | | | | |
| 3 | TCP | MELSOFT Connection | | | | |
| 4 | TCP | MELSOFT Connection | | | | |
| 5 | TCP | MELSOFT Connection | | | | |
| 6 | TCP | MELSOFT Connection | | | | |
| 7 | TCP | MELSOFT Connection | | | | |
| 8 | TCP | MELSOFT Connection | | | | |
| 9 | TCP | MELSOFT Connection | | | | |
| 10 | TCP | MELSOFT Connection | | | | |
| 11 | TCP | MELSOFT Connection | | | | |
| 12 | TCP | MELSOFT Connection | | | | |
| 13 | TCP | MELSOFT Connection | | | | |
| 14 | TCP | MELSOFT Connection | | | | |
| 15 | TCP | MELSOFT Connection | | | | |
| 16 | TCP | MELSOFT Connection | | | | |

Host station port No., destination port No: Please input in HEX.

End Cancel

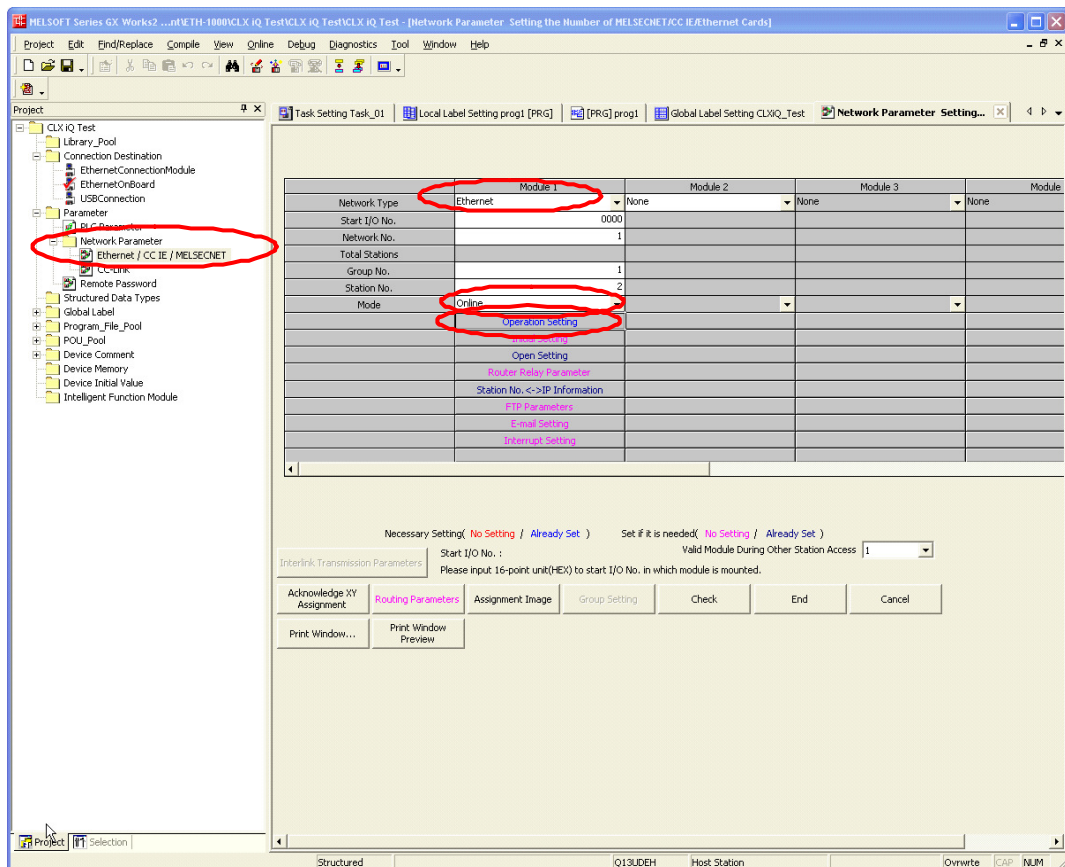
- 3. Download the parameter settings to the PLC.

| | |
|----------|--|
| 1 | Introduction |
| 2 | System Overview |
| 3 | Devices to the Network |
| 4 | ControlLogix PLC Project Configuration |
| 5 | ETH-1000 Configuration |
| 6 | Using EtherNet/IP Explicit Messaging |
| 7 | Terminology |

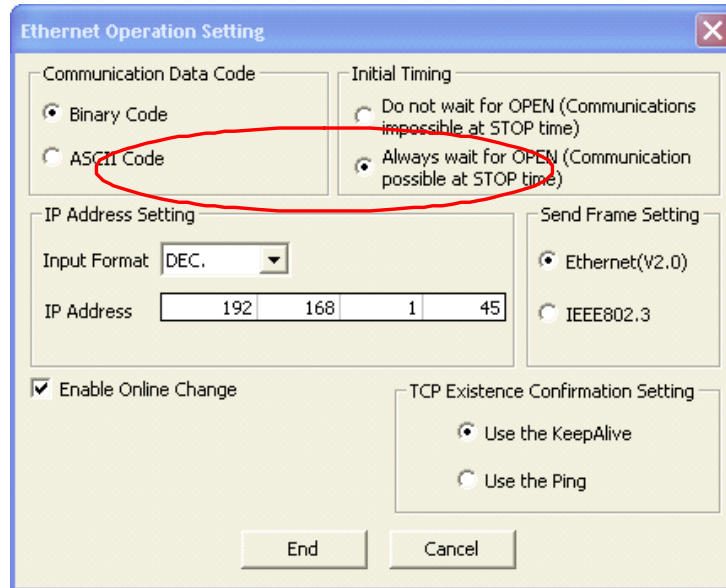
3.4 Configuring the External Ethernet Module in the iQ System

When application requires, an external Ethernet module can be added to the system and communicating to the iQ CPU. This section describes the configuration of a QJ71E71-100 module to be used in the communication with a CLX through the ICC ETH-1000 gateway.

1. Select the Network Parameter-> Ethernet/CC IE/MELSECNET on the Project Tree which will open the parameter setting window.
 - a. Select the Network Type to be "Ethernet."
 - b. Set up appropriate Network, Group, and Station numbers depending on the application network topology. In the verification system, the Network Number is set to be 1, the Group Number is set to 1, and the Station Number is set to 2.
 - c. Set the Mode to "On Line."
 - d. Click "Operation Setting" to go to the next steps.



2. At the “Ethernet Operation Setting window”, one can configure the IP address of the Ethernet module.
 - a. Set the Communication Data Code to Binary
 - b. Check the “Enable Online Change” checkbox
 - c. Select the “Initial Timing” to be Always wait for OPEN (Communication possible at STOP time). **This is a critical step to ensure proper communication between the Ethernet module and the ICC ETH-1000.**
 - d. Select the “Use the KeepAlive” function.
 - e. Click “End” to return to the Network Parameter Setting Window



3. At the Network Parameter Setting window, click “Open Setting” and open the window below and enter the parameters as shown:
 - a. Configure the Host Station Port Number to match the Connection Object port number configured in the ICC ETH-1000.

| | Protocol | Open System | Fixed Buffer | Fixed Buffer Communication Procedure | Pairing Open | Existence Confirmation | Host Station Port No. | Destination IP Address | Destination Port No. |
|----|----------|-------------|--------------|--------------------------------------|--------------|------------------------|-----------------------|------------------------|----------------------|
| 1 | TCP | Unpassive | Receive | Procedure Exist | Disable | No Confirm | 5001 | | |
| 2 | | | | | | | | | |
| 3 | | | | | | | | | |
| 4 | | | | | | | | | |
| 5 | | | | | | | | | |
| 6 | | | | | | | | | |
| 7 | | | | | | | | | |
| 8 | | | | | | | | | |
| 9 | | | | | | | | | |
| 10 | | | | | | | | | |
| 11 | | | | | | | | | |
| 12 | | | | | | | | | |
| 13 | | | | | | | | | |
| 14 | | | | | | | | | |
| 15 | | | | | | | | | |
| 16 | | | | | | | | | |

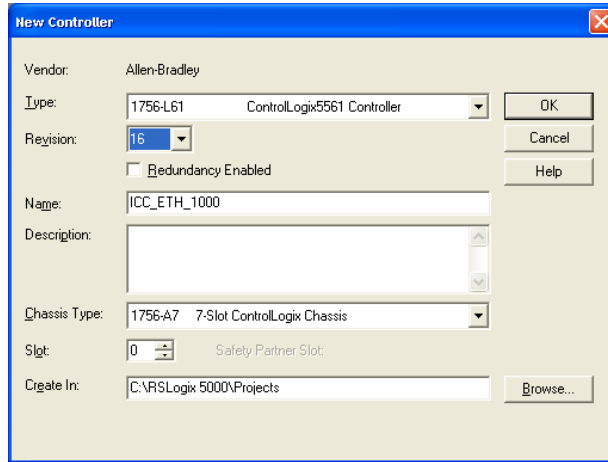
Host station port No, destination port No: Please input in HEX.

Chapter 4 ControlLogix PLC Project Configuration

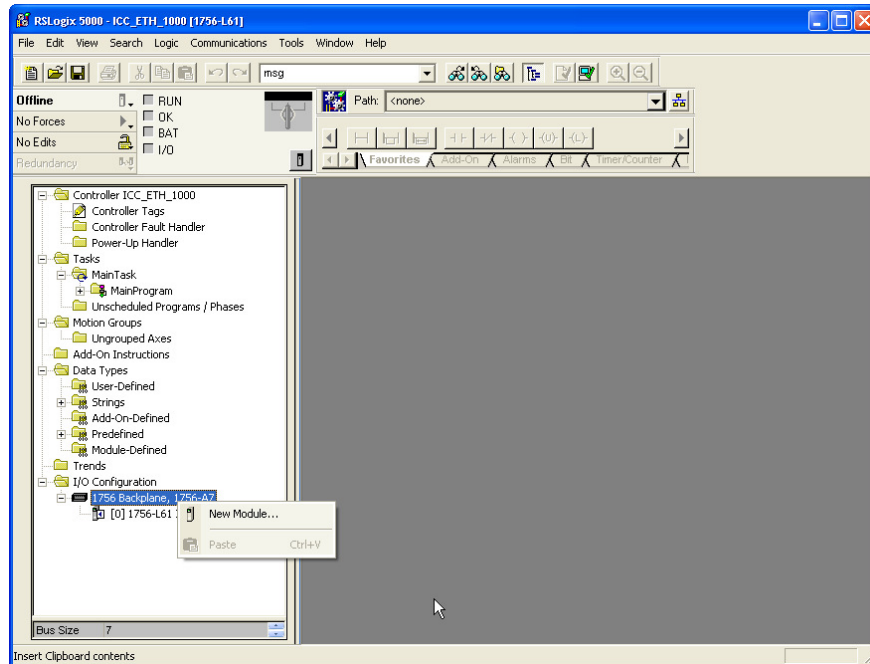
The configuration steps of a ControlLogix project are described this Chapter. These steps are used to communicate with an ICC ETH-1000 module. It is assumed that the user has basic knowledge in using RSLogix5000 software to perform the basic configuration steps.

4.1 Adding the 1756 ENBT Module

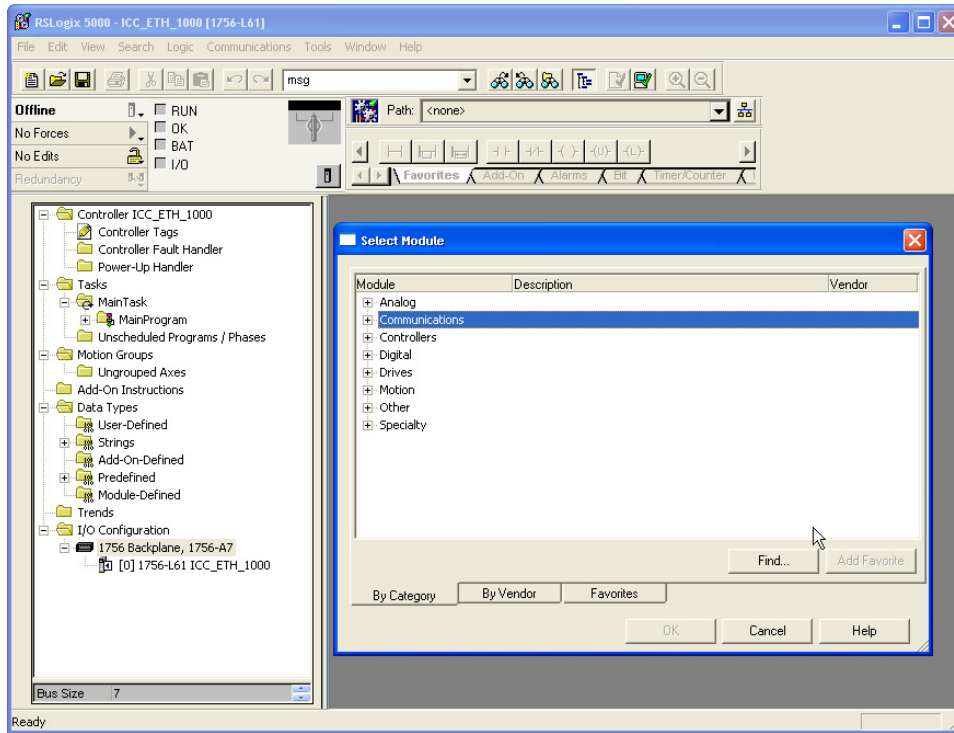
1. Create a new project in the RSLogix5000 using the proper revision level as the ControlLogix controller. In this example, the revision level is 16.



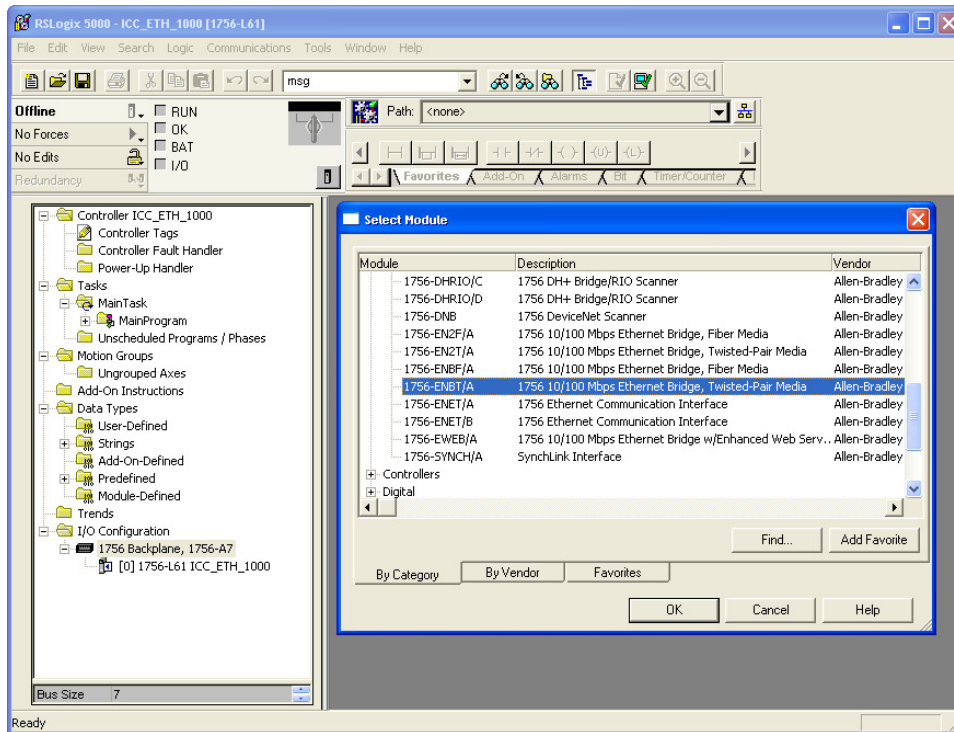
2. Right Click on the 1756 Backplane Selection and choose “New Module...”



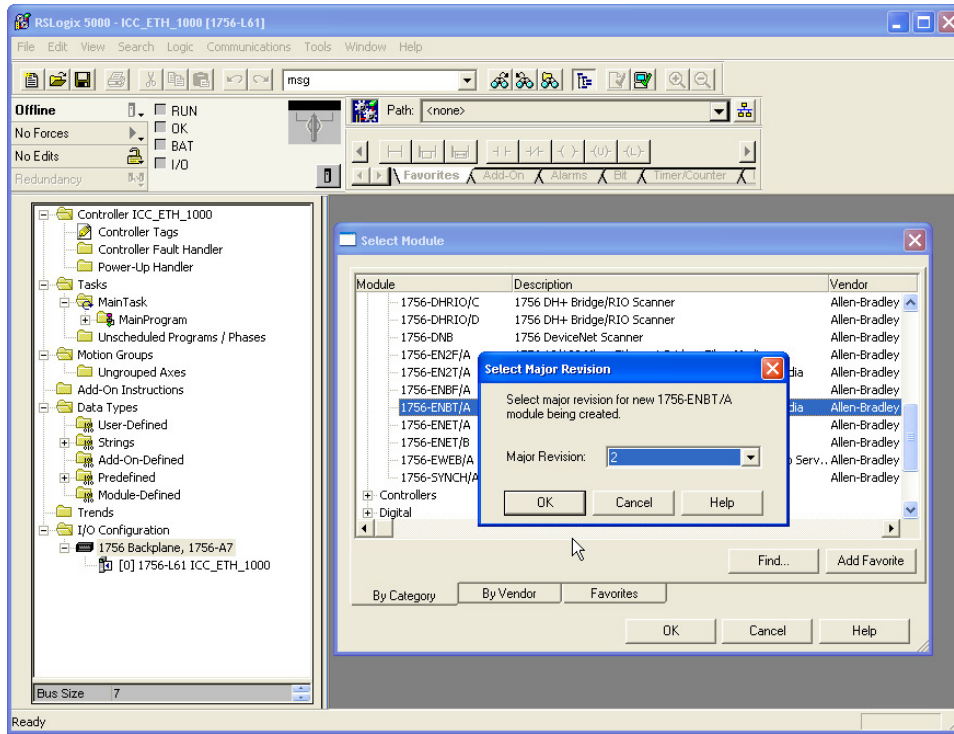
3. In the “Select Module” pop-up window, choose the “Communications”



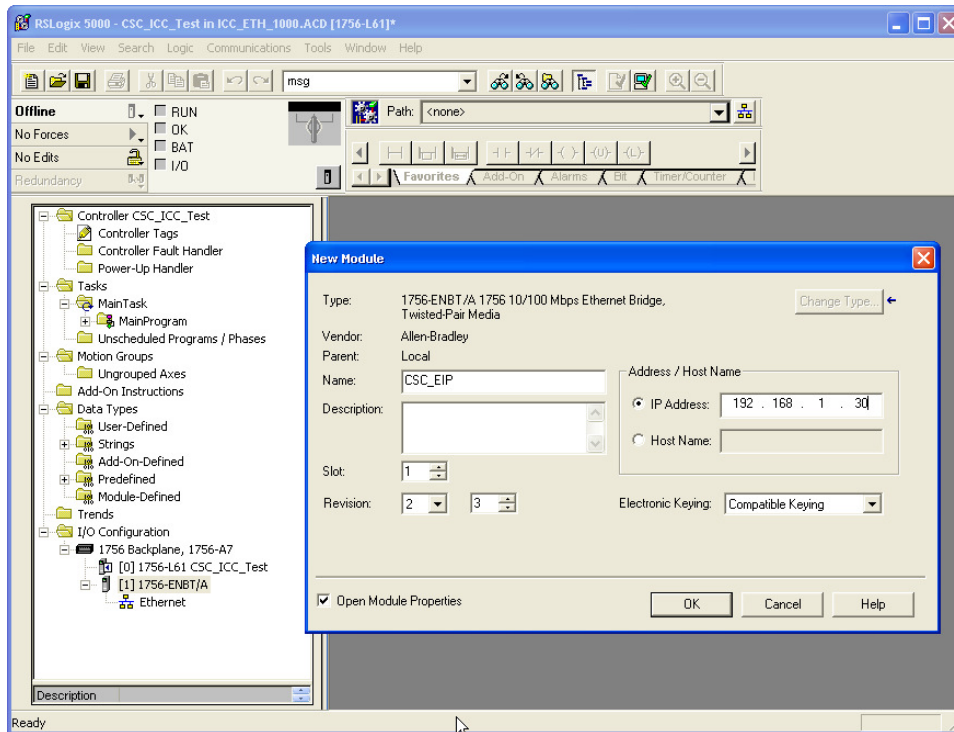
4. Then select the proper module 1756 ENBT



- Then select the Major Revision level of the ENBT firmware. In the Verification System, the major revision level of the ENBT module is 2.



- Enter the proper Name, Slot Location, Revision Level and IP Address of the ENBT module. In the Verification System, the module name is set at CSC_EIP, the revision firmware level is 2.3, the module is in Slot 1 of the ControlLogix Chassis, and the IP address is set at 192.168.1.30, matching the previous configuration.

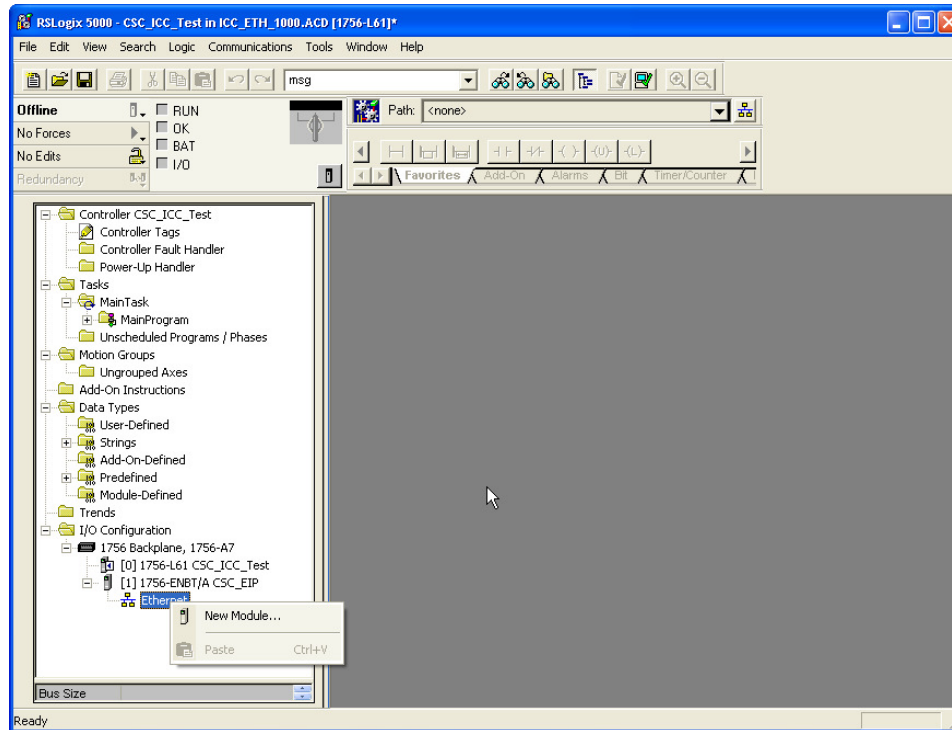


- Click “OK” to accept the configuration and make no additional configuration changes to the “Connection” tab. Simply click “OK” again to accept the configuration.

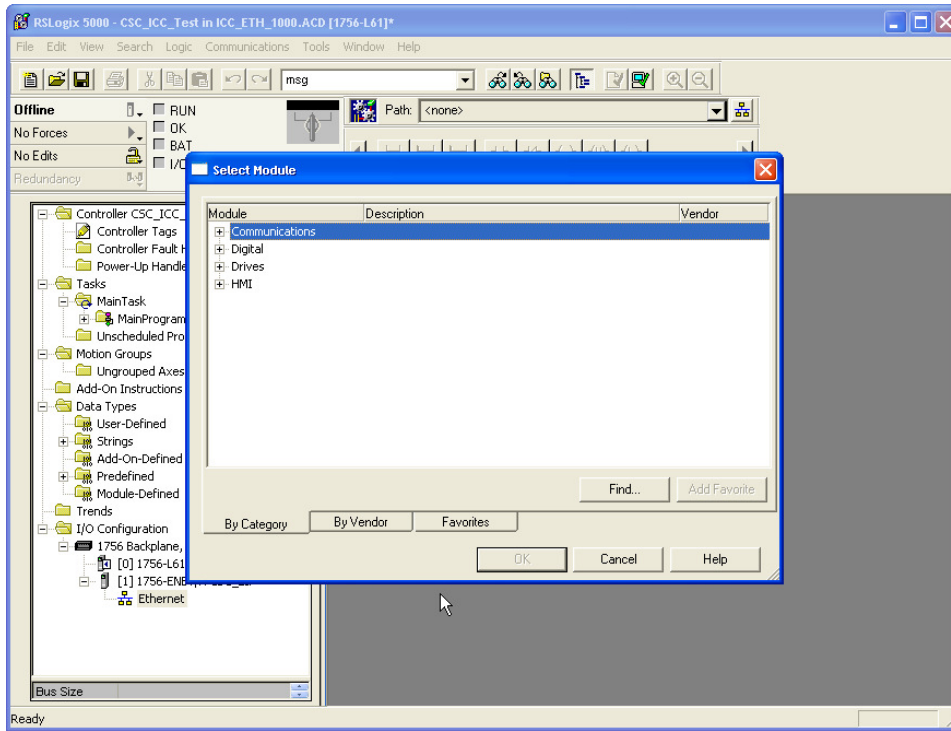
4.2 Adding the ICC Module

The following steps are used to add the ICC module for communication using I/O Messaging (or Implicit Messaging method).

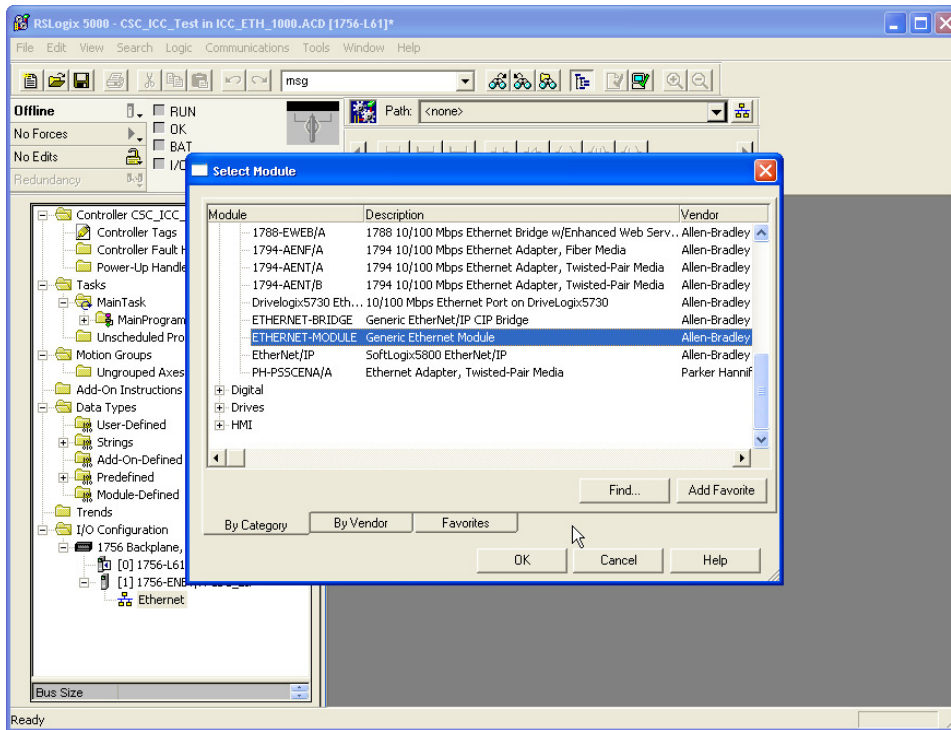
- Right click on the “Ethernet” icon under the ENBT module which is added to the project and select “New Module...”



2. Select the “Communications” and expand the tree for additional selection.

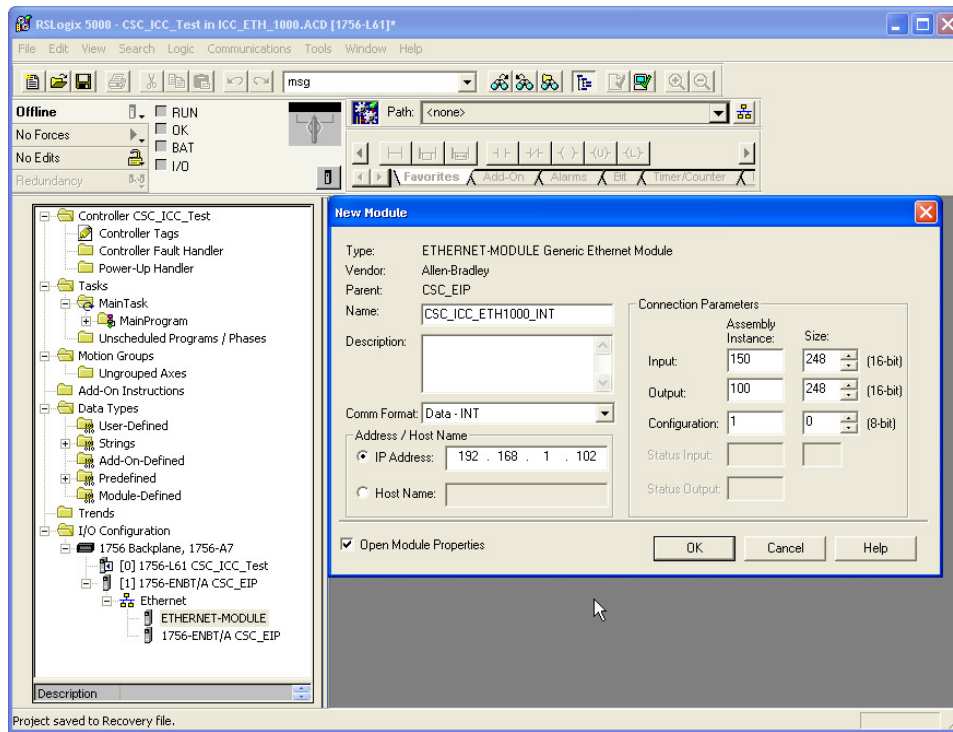


3. Choose the Ethernet-Module Generic Ethernet Module



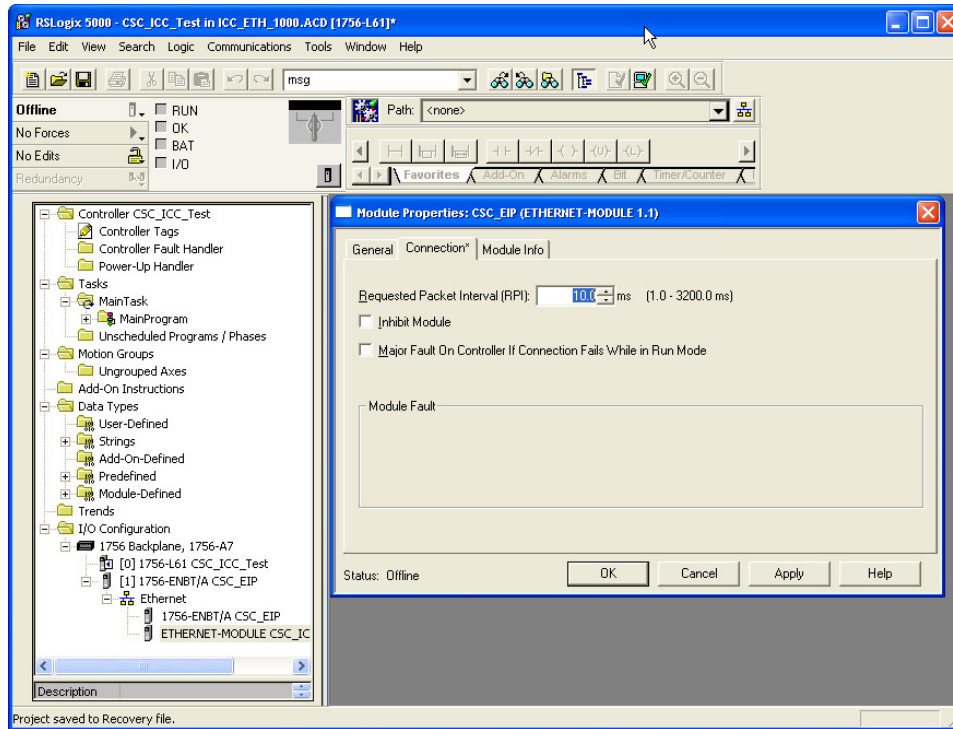
| | |
|---|---|
| 1 | Introduction |
| 2 | System Overview |
| 3 | Devices to the Network |
| 4 | ControlLogix PLC Project Configuration |
| 5 | ETH-1000 Configuration |
| 6 | Using EtherNet/IP Explicit Messaging |
| 7 | Terminology |

4. Double Click on the selection and configure the ICC module accordingly. **This is a critical configuration step to ensure the ETH-1000 will work properly in the system as the application requires.** Please also consult the ICC ETH-1000 User's Manual carefully about the configuration of these items.

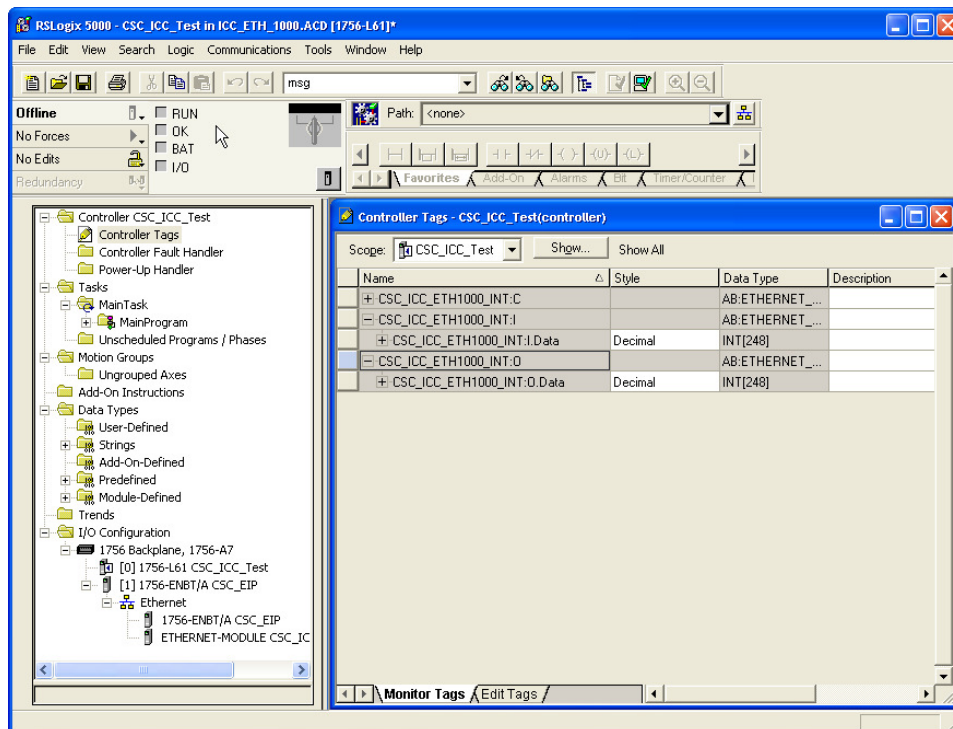


- a. Configure the “Comm Format” as “Data-INT” for the overall system to work best with the ICC module and the controller registers. This will allow the transfers to be done in 16 bit integers.
 - *Note: For each application, the data type should be configured to match the requirements of the particular application.*
- b. Set the IP Address of the generic Ethernet module to the IP address assigned to the ICC module earlier. For example, the IP address of the ICC module is set at 192.168.1.102 In the Verification System.
- c. Configure the “Connection Parameters” as follow:
 - The “Input” Assembly Instance should be set at “150.” The size of the Input Assembly buffers should be set at the size appropriate for the application. In the verification system, the buffer is set at 248 16-bit words.
 - The “Output” Assembly Instance should be set at “100.” The size of the Input Assembly buffers should be set at the size appropriate for the application. In the verification system, the buffer is set at 248 16-bit words.
 - The “Configuration” is not used and should be set at “1” as the Assembly Instance and 0 buffer size.
- d. Check the “Open Module Properties” box and click “OK” to accept the configuration.

- Configure the RPI to 10.0 ms.



- Select "OK" to accept the configuration and complete the ICC Module Configuration.
- Double click on the "Controller Tags" selection, and the following tags are automatically created for the ICC ETH-1000 module:



- a. 248 integer tags were created for CSC_ICC_ETH1000_INT:I. These are the tag locations where ICC will transfer the data to the ControlLogix using Implicit Message protocol every RPI.
- b. 248 integer tags were created for CSC_ICC_ETH1000_INT:O. These are the tag locations where data will be sent to ICC ETH-1000 through Implicit Messaging Protocol every RPI.
- c. The locations in the ICC Database where the data will be written to and read from will be configured using the steps described in the following Chapter.

Chapter 5 ETH-1000 Configuration

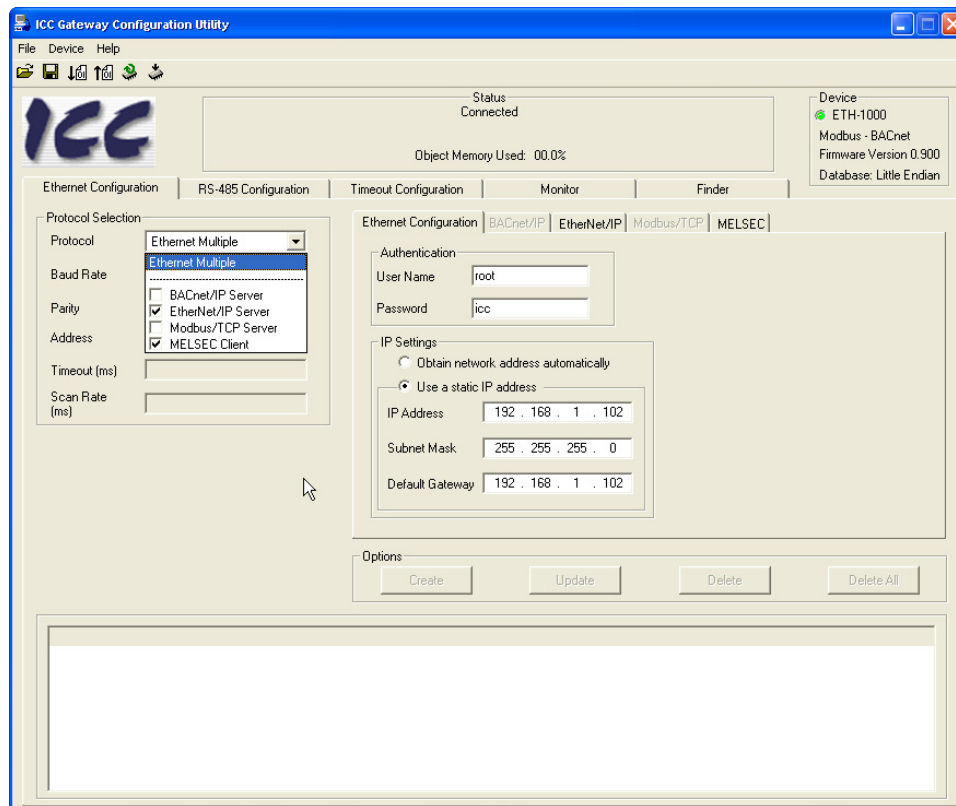
The steps to configure the ETH-1000 module to work with the ControlLogix PLC using EtherNet/IP Implicit Messaging and Mitsubishi controllers using MC Protocol are documented.

Configuring the Validation System as shown in Figure 2 is used as the example. Some parameters will need different values to properly reflect the actual system a user is configuring. However, the example configuration can be used to simplify the overall configuration effort.

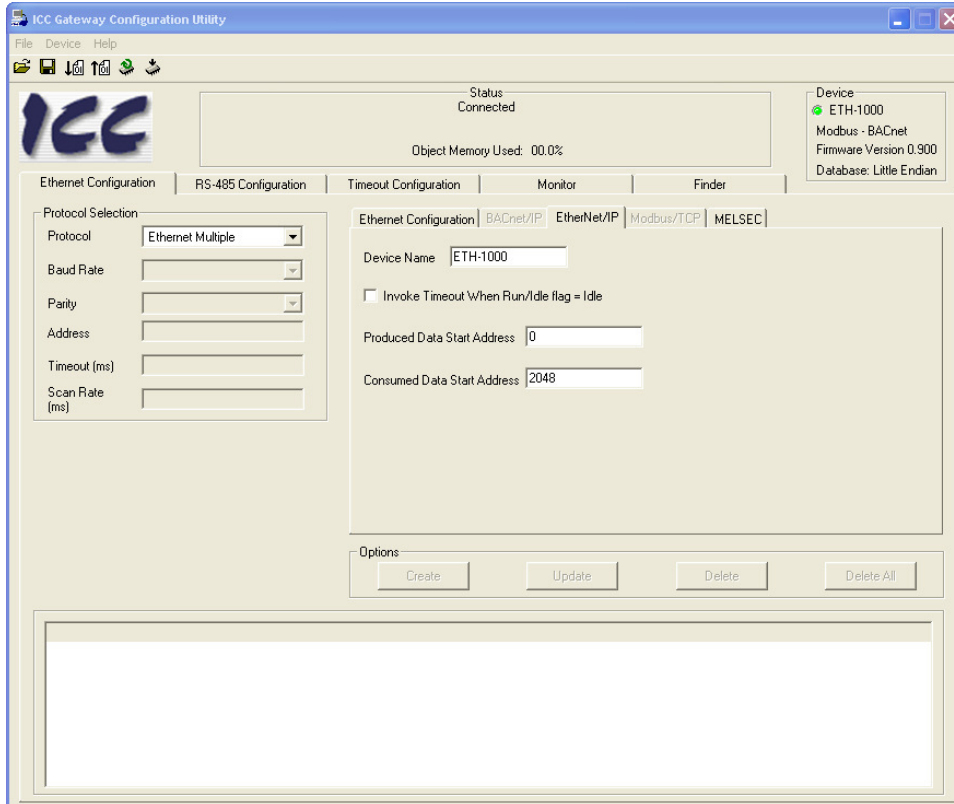
The user should have gone through the configuration steps as shown in Section 3.2 of this document.

5.1 Configuring the EtherNet/IP Implicit Messaging Communication

1. Select the “Ethernet Multiple” Protocol Selection box and check “EtherNet/IP Server” and “MELSEC Client” selections. Selecting these two check boxes allow the EtherNet/IP and MELSEC tabs to become active. The screen also shows the current IP Address of the ICC Module and the Authentication User Name and Password if they are needed.



2. Select the EtherNet/IP tab of the ICC Configuration screen and define the ICC Database locations where data items will be exchanged between the ControlLogix PLC and the ICC module through the Implicit Messaging protocol.



In this example, the “Produce Data Start Address” of the ICC module is set at Database Location 0 and the “Consume Data Start Address” at 2048. These addresses are referring to the database in the ICC module that will be used to transfer data between ICC and the ControlLogix tags. The “Produced” and “Consumed” terms are from the ICC Module perspective. The following diagram is helpful to explain how the data items are assigned and transferred.

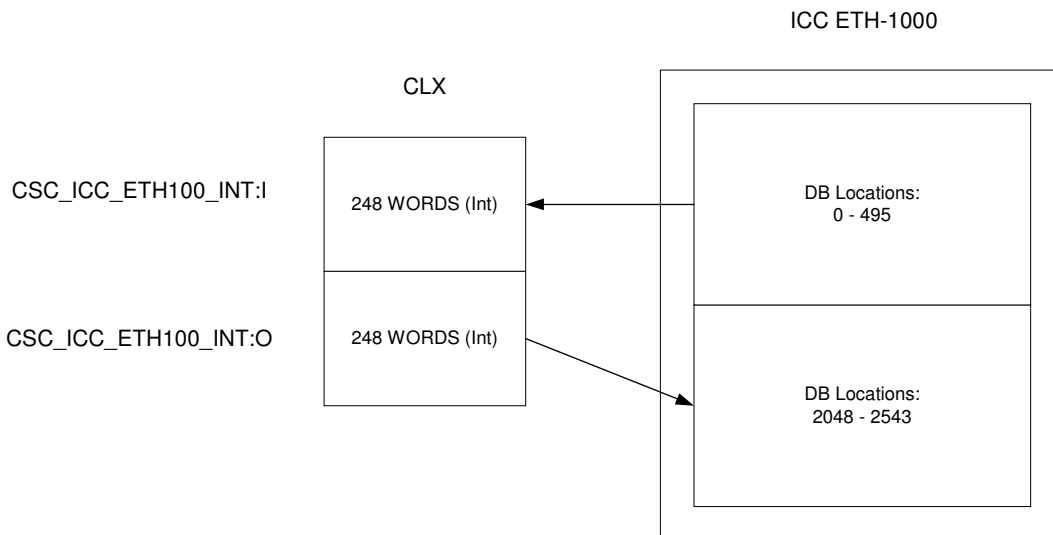
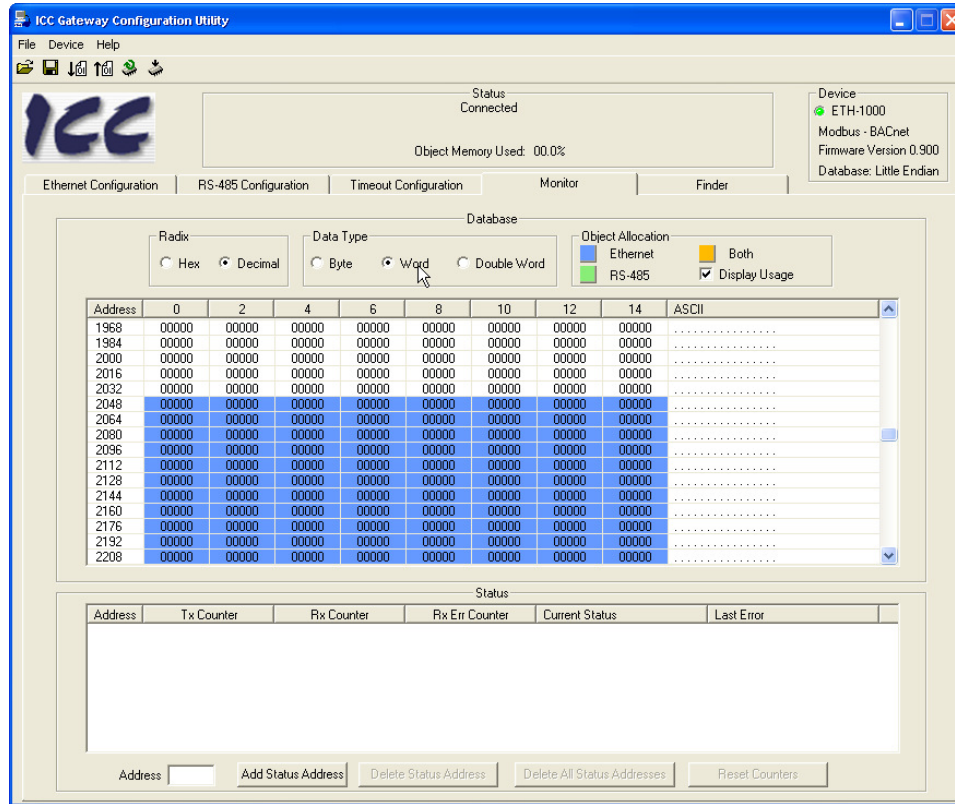


Figure 3 Mapping CLX Data to ICC Database Locations

The database addresses in the ICC are used to address “byte” data locations. Thus, 248 words will take up 496 database addresses.

3. Select the “Monitor” tab and check the “Display Usage” checkbox to show the DB memory locations that are configured for use by both the Produced and Consumed data.



5.2 Configuring the MELSEC Protocol

The steps to properly configure the MELSEC Protocol in the ICC ETH-1000 are documented in this section. However, the user should realize that the steps here are examples for a particular configuration to establish the Verification System architecture as shown in Figure 2. [For a particular application, the Connection Objects and Service Objects configured in this manual may not work properly without modifications.](#) A user should consult the ICC ETH-1000 manual and understand the information required to be transfer to and from Mitsubishi controllers and the timing requirements.

The critical steps are the configuration of a MELSEC Connection Object and the services that need to be accomplished using this Connection Object. A Connection Object can be configured to represent a physical connection between an ICC ETH-1000 and a Mitsubishi controller. However, this does not have to be the case since a physical connection can support multiple “logical” connections using multiple connection objects depending on the application requirements.

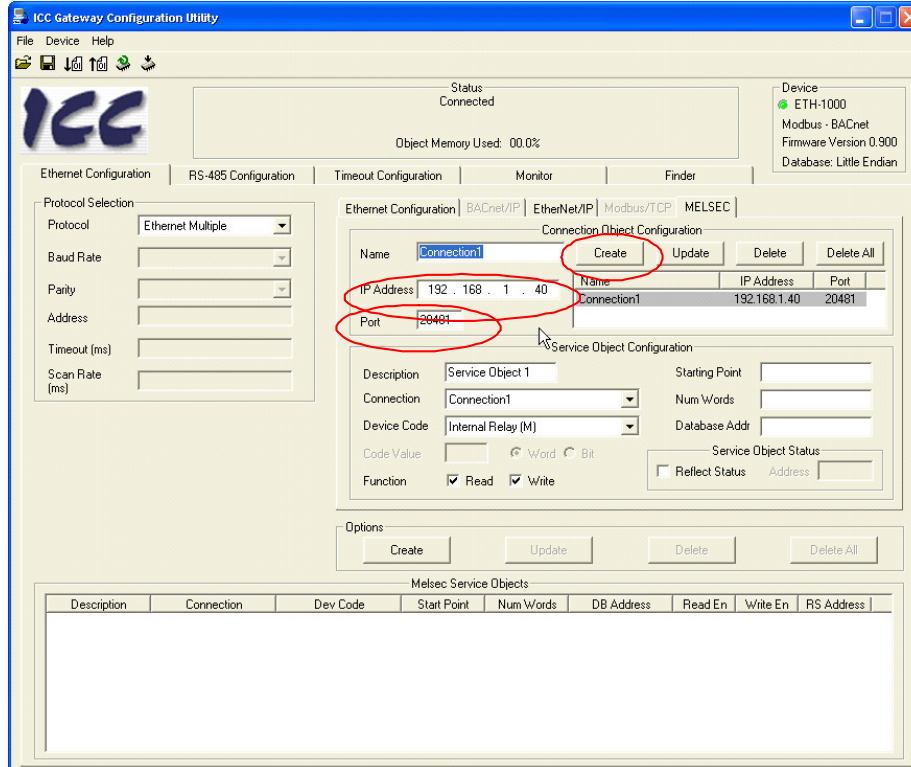
After a Connection Object is configured, multiple Service Objects can be configured for this Connection Object. Each service object defines the tasks that need to be accomplished, for example read 20 words of controller D registers starting from D12287, write 10 words to controller Internal Relay.

5.2.1. Configuring Connection Objects

The following steps are used to create a Connection Object to communicate with a iQ PLC with the IP address 192.168.1.40 using TCP port 0x5001 (e.g. Decimal 20481)

1. Create a name for this Connection Object. The name is “Connection1” for this example.

2. Enter the IP address of the controller that will be connected. The IP is 192.168.1.40 for this example
3. Enter the Port Number in decimal. The Port is 20481 or 0x5001 for this example.
4. Hit “Create” after the information is entered and the Connection Object is shown as below.



5.2.2. Configuring Service Objects

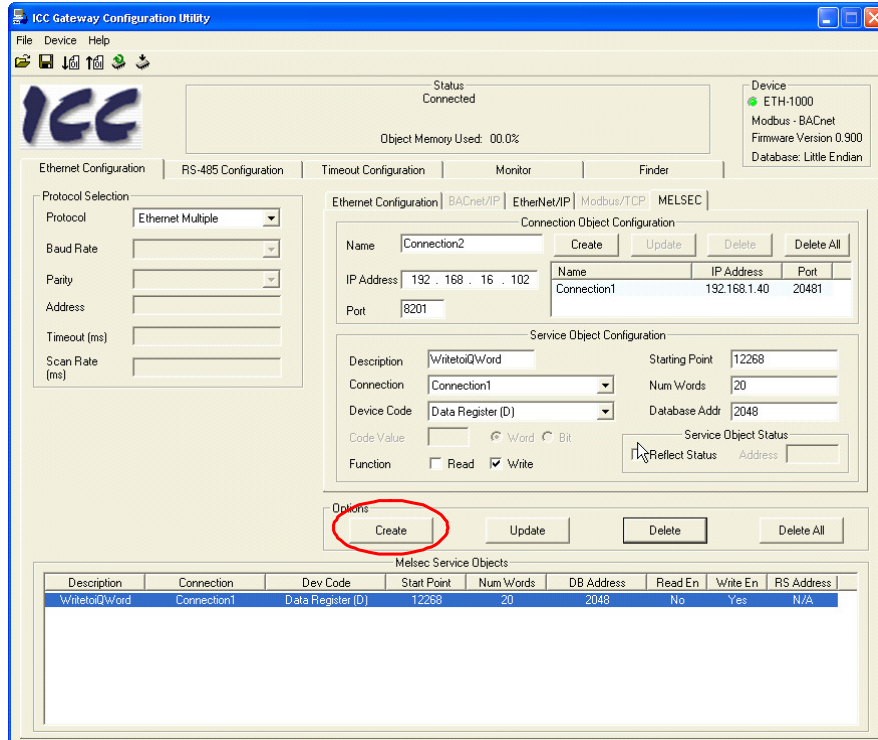
In the Verification System architecture, four service objects were created for each connection to a controller that is defined:

- Write 20 words from ICC DB to Data Register 12268 – Data Register 12287
- Read 20 words from Data Register 12248 – Data Register 12267 to ICC DB
- Write 10 words (160 bits) from ICC DB to Internal Relay M7841 – M8000
- Read 10 words (160 bits) from Internal Relay M7681 – M7840 to ICC DB

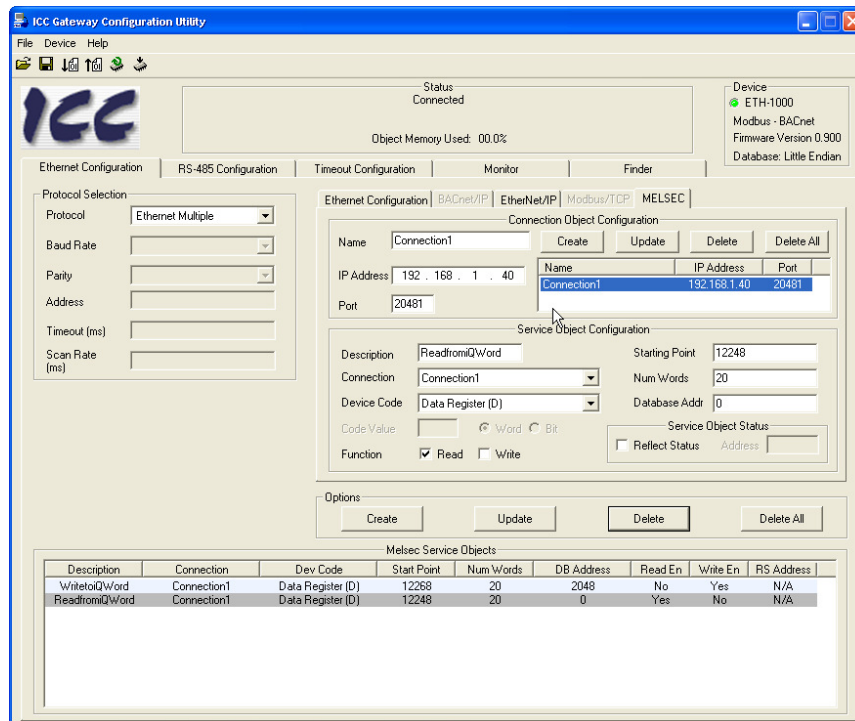
Following are the steps to configure a service object to write 20 words from ICC DB to Data Registers 12268 - 12287:

1. Select “Connection 1” on the Connection Object Configuration list that has been defined in Section 5.2.1.
2. Enter the “Description” to describe this Service Object
3. Select the Device Code of the iQ PLC that the data will be transferred. For this example, select “Data Register (D).”
4. Check the appropriate checkbox(s) of Function selection. **It is important to know that the “Read” and “Write” functions are from the ICC ETH-1000 perspective.** In other words, selecting the “Write” checkbox enables the service object to transfer the data items from ICC DB to the designated data register locations using the MC Protocol. For this example, the “Write” checkbox is selected.

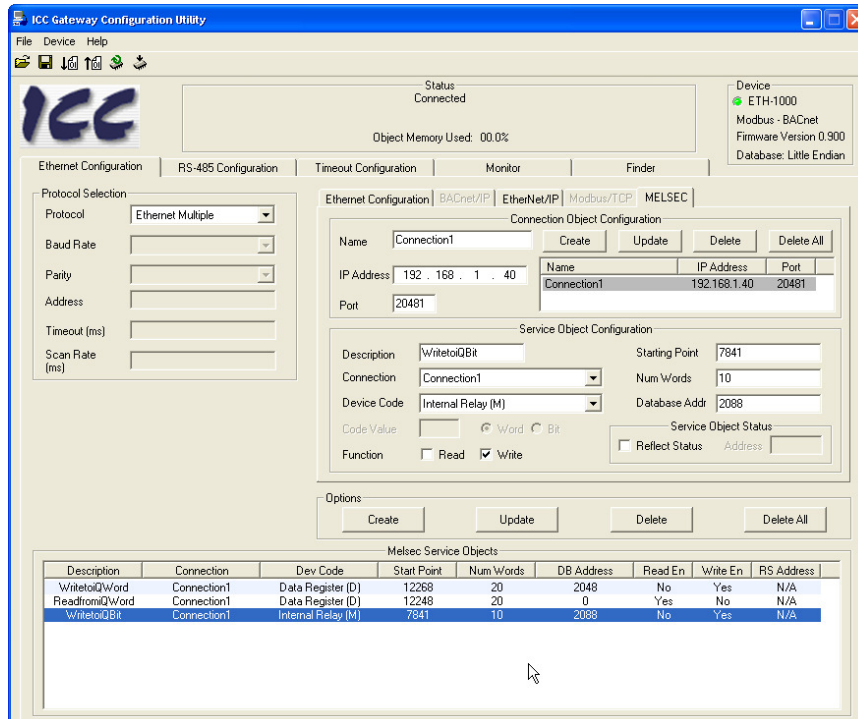
5. Enter the Starting Point of the Data Registers where the data items will be written into. In this example, the Starting Point is “12268.”
6. Enter the number of words to be transferred in the “Num Words” dialog box. In this example, the number of words is “20.”
7. Enter the Database Address (Database Addr.) of the ICC DB where data items are stored and will be written to the controller registers. In this example, the starting DB address is 2048.
8. Click the “Create” button to create this Service Object



9. Repeat the steps 1-8 to define the other three service objects to perform the transfers between ICC and iQ PLC.
 - a. Define the Service Object to read 20 Data Registers to ICC



- b. Define the Service Object to write 10 Words to Internal Relay



c. Define the Service Object to read 10 words of Link Relay to ICC

| Description | Connection | Dev Code | Start Point | Num Words | DB Address | Read En | Write En | RS Address |
|---------------|-------------|--------------------|-------------|-----------|------------|---------|----------|------------|
| WriteIQWord | Connection1 | Data Register (D) | 12268 | 20 | 2048 | No | Yes | N/A |
| ReadfromQWord | Connection1 | Data Register (D) | 12248 | 20 | 0 | Yes | No | N/A |
| WriteIQBit | Connection1 | Internal Relay (M) | 7841 | 10 | 2088 | No | Yes | N/A |
| ReadfromQBit | Connection1 | Internal Relay (M) | 7681 | 10 | 40 | Yes | No | N/A |

5.2.3. Configuring the Connection Object for QJ71E71 Ethernet Module

Repeat steps documented in Sections 5.2.1 and 5.2.2 to configure the Connection and Service objects to communicate to the external Ethernet module in the system.

1. Create a Connection Object first with name Connection2. Enter the IP address of the Ethernet module and the Port number (e.g. 20481 or Hex5001 as configured in Section 3.4 .
2. Create the Service Objects to read and write 20 words from and to D registers and 10 words from and to Internal Relays.

The screenshot shows the ICC Gateway Configuration Utility window. The status is 'Connected' and 'Object Memory Used: 00.0%'. The device is identified as 'ETH-1000' with 'Modbus - BACnet' protocol and 'Firmware Version 0.900'. The database is 'Little Endian'.

The 'Ethernet Configuration' tab is active, showing 'Protocol Selection' set to 'Ethernet Multiple'. The 'Connection Object Configuration' section shows a new object named 'Connection2' with IP Address '192.168.1.45' and Port '20481'. A table below lists existing connection objects:

| Name | IP Address | Port |
|-------------|--------------|-------|
| Connection1 | 192.168.1.40 | 20481 |
| Connection2 | 192.168.1.45 | 20481 |

The 'Service Object Configuration' section shows a new service object named 'WritetoQWordEport' with 'Starting Point' 12228, 'Connection' set to 'Connection2', 'Num Words' 20, and 'Device Code' 'Data Register (D)'. The 'Database Addr' is 2128. The 'Function' is set to 'Write'.

The 'Options' section includes 'Create', 'Update', 'Delete', and 'Delete All' buttons.

The 'Melsec Service Objects' table at the bottom lists the configured objects:

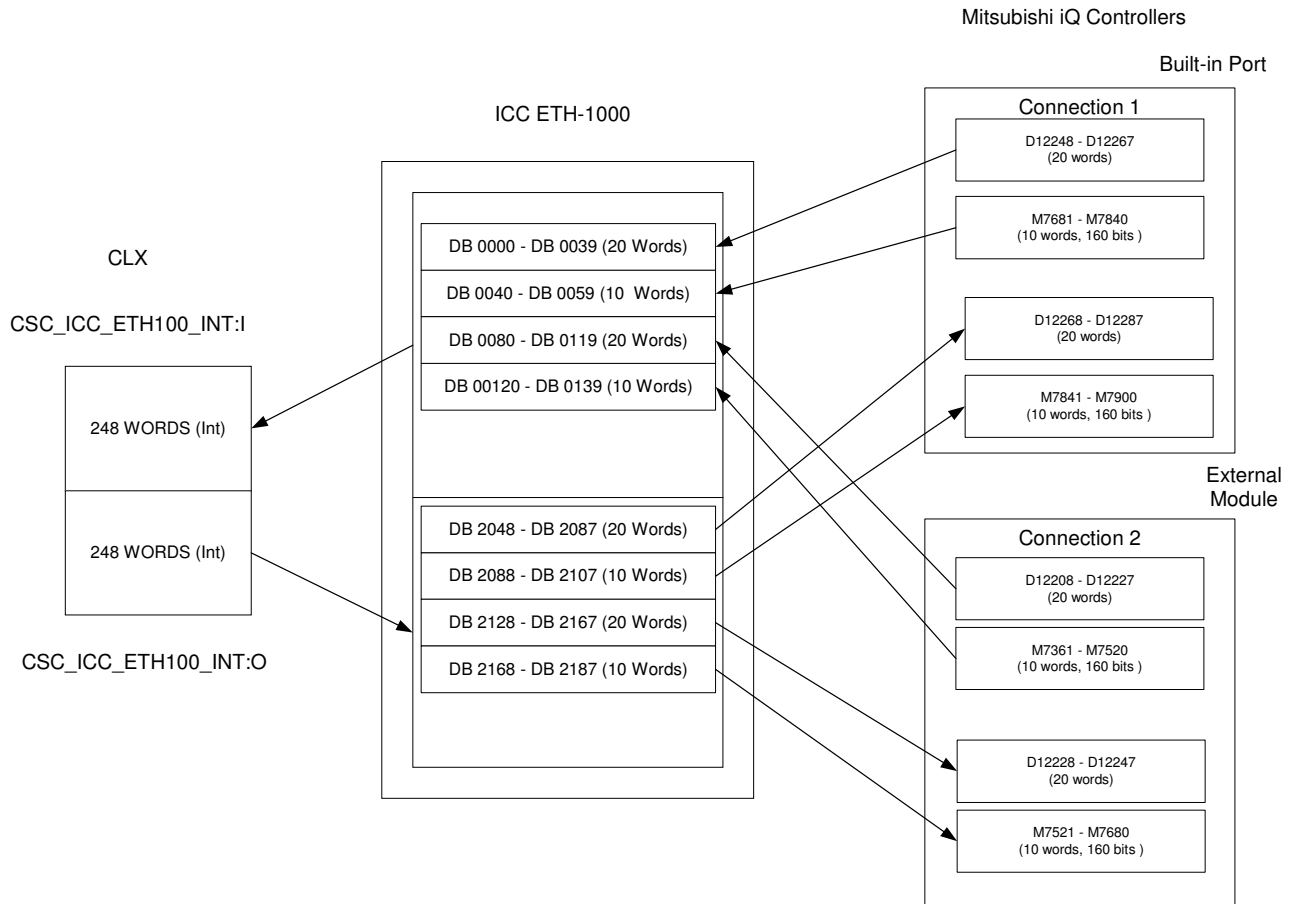
| Description | Connection | Dev Code | Start Point | Num Words | DB Address | Read En | Write En | RS Address |
|------------------|-------------|--------------------|-------------|-----------|------------|---------|----------|------------|
| WritetoQWord | Connection1 | Data Register (D) | 12268 | 20 | 2048 | No | Yes | N/A |
| ReadfromQWord | Connection1 | Data Register (D) | 12248 | 20 | 0 | Yes | No | N/A |
| WritetoQBit | Connection1 | Internal Relay (M) | 7841 | 10 | 2088 | No | Yes | N/A |
| ReadfromQBit | Connection1 | Internal Relay (M) | 7681 | 10 | 40 | Yes | No | N/A |
| WritetoQWordE... | Connection2 | Data Register (D) | 12228 | 20 | 2128 | No | Yes | N/A |
| ReadfromQWor... | Connection2 | Data Register (D) | 12208 | 20 | 80 | Yes | No | 300 |
| WritetoQBitEport | Connection2 | Internal Relay (M) | 7521 | 10 | 2168 | No | Yes | N/A |
| ReadfromQBitE... | Connection2 | Internal Relay (M) | 7361 | 10 | 120 | Yes | No | N/A |

5.2.4. Calculating the ICC ETH-1000 DB Addresses

One of the most important steps in configuring a service object is to determine the Database Address that needs to be entered. Since the ICC ETH-1000 DB is a “shared database” between EtherNet/IP and MELSEC protocols, one has to define carefully which way the data items will be written to and read from.

Figure 3 of this document in Section 5.1 shows the mapping of data from ControlLogix to the ICC DB. This mapping is then expanded to map from ICC DB to the Mitsubishi controllers connected to the ICC gateway in the system.

The following diagram illustrates an example of the mapping the ICC DB to Mitsubishi iQ system with an Built-in Ethernet port and an external Ethernet module. Each Ethernet port transfers 10 words of bit data and 20 words of word data.



The DB addresses configured in the MELSEL service objects are the beginning addresses of each block of data shown above. The ICC DB addresses are “Byte” addresses so that starting address locations need to be adjusted accordingly.

A Microsoft Excel-based database address calculation tool is available from Mitsubishi Electric Automation, Inc. upon request. The tool can be used to calculate the DB locations of MELSEC service objects to assist the configuration efforts. Please contact your MEAU representatives to obtain a copy of this tool.

| | |
|----------|--|
| 1 | Introduction |
| 2 | System Overview |
| 3 | Devices to the Network |
| 4 | ControlLogix PLC Project Configuration |
| 5 | ETH-1000 Configuration |
| 6 | Using EtherNet/IP Explicit Messaging |
| 7 | Terminology |

6

Chapter 6 Using EtherNet/IP Explicit Messaging

The ControlLogix PLC can communicate with the Mitsubishi iQ PLC using EIP Explicit Messaging format through the ICC ETH-1000 gateway.

The communication is accomplished through the use of MSG instructions in RSLogix5000. Refer to Sections 11.1.4.5, 11.1.4.6, 8.7.5.1 of the [“Instruction Manual: ETH-1000 Multiprotocol Ethernet / RS-485 Gateway”](#) for details on how to configure the MSG instructions properly for communicating with Mitsubishi controllers.

Chapter 7 Terminology

| | |
|----------------------------------|--|
| Implicit (I/O Data) Messaging | Connections are established to move application-specific I/O data at regular intervals. These connections often are set up as one-to-many relationships in order to take full advantage of the producer-consumer multicast model. Implicit messaging uses UDP/IP resources to make multicast data transfers over Ethernet a reality. |
| Explicit Messaging | Point-to-point relationships that are established to facilitate request-response transactions between two nodes. These connections are general purpose in nature and can be used to reach any network-accessible items within a device. Explicit messaging connections utilize TCP/IP services to move messages across Ethernet. |
| EtherNet/IP | EtherNet/IP is the name given to the Common Industrial Protocol (CIP), as implemented over standard Ethernet (IEEE 802.3 and the TCP/IP protocol suite). |
| User Defined Data Type | User-defined data types allow a user to organize the data to match a machine or process. This streamlines program development and creates self-documenting code that is easier to maintain. A user-defined data type stores all the data related to a specific aspect of a system. This keeps related data together and easy to locate, regardless of its data type. |
| Common Industrial Protocol (CIP) | The Common Industrial Protocol (CIP) is a media independent, connection-based, object-oriented protocol designed for automation applications. It encompasses a comprehensive set of communication services for automation applications: control, safety, synchronization, motion, configuration and information. |
| Connection Object | The CIP Connection Class allocates and manages the internal resources associated with both I/O and Explicit Messaging Connections. The specific instance generated by the Connection Class is referred to as a <i>Connection Instance</i> or a <i>Connection Object</i> . |
| Service Object | Service is a function supported by an object and/or object class. The Service Object configured for a particular ICC ETH-1000 to a Mitsubishi device connection is used to define what data transfer functions need to be executed. |

Revisions

July 2009 – Document created and Released, Version 1.0

October 2009 – Minor revision to wording throughout the document, Version 1.1