

# Setup Manual for the PARTNER-CTR

Read this guide before connecting the "PARTNER-CTR" series to your computer.

This manual describes how to connect the PARTNER-CTR to the computer, install device drivers for each OS and set up the system.

## Interfaces Described in This Manual

USB Interface

## OSs Described in This Manual

Windows XP

Windows Vista

Windows 7

-Please note that the content and specifications of this product may be modified without prior notice.

-Although every care has been taken in the production of this product, Kyoto Microcomputer Co., Ltd. cannot be held responsible for any consequences of the use of this product.

Kyoto Microcomputer Co., Ltd.

## Cautions

- Do not put heavy objects on the PARTNER-CTR main unit, or apply pressure to the unit.
- Do not drop the PARTNER-CTR or apply vibration or shock to it.
- Do not pull the cord when unplugging the cable.
- Exercise great care not to damage the PARTNER-CTR with static electricity.
- Do not use or store the unit in high temperature, high humidity, dusty areas or under direct sunlight.
- Avoid rapid change of temperature and humidity.
- Be careful not to spill drinks or other liquids on the PARTNER-CTR or its accessories.
- Be careful not to plug the connector into the wrong interface card.
- Do not use anything other than the power adapter and power cable provided specifically for the PARTNER-CTR hardware.

## Notice

- The module and the host must be operated with accessories which bear the FCC logo or comply with the relevant FCC/IC regulations. Following condition must be considered.

1. Example cables between monitor and host may be considered if not provided by the Monitor's manufacturer.

By Manufacturer: TechCraft                      Model: CDVI-MMDL2M

By Manufacturer: cablestogo                      Model: 40296

By Manufacturer: cable unlimited                      Model: PCM-2285-06

2. Classic KUMI C model RVL-005(-05) with the ferrite cores cable is included in the package with the host.

The accessories do not comply with the FCC/IC regulations, operated with the host. Or others than the listed cables and accessories could void the user's authority to operate the equipment.

module : DWM-W028(FCCID EW4DWMW028/IC 4250A-DWMW028)

host : PARTNER-CTR Debugger / Capture / CaptureDebugger

## Regulatory Statement

### **--- U.S.A & Canada ---**

- CAUTION: Changes or modifications not expressly approved by the party responsible for compliance could void the user's authority to operate the equipment.
- NOTE: This equipment has been tested and found to comply with the limits for a Class A digital device, pursuant to part 15 of the FCC Rules. These limits are designed to provide reasonable protection against harmful interference when the equipment is operated in a commercial environment. This equipment generates, uses, and can radiate radio frequency energy and, if not installed and used in accordance with the instruction manual, may cause harmful interference to radio communications. Operation of this equipment in a residential area is likely to cause harmful interference in which case the user will be required to correct the interference at his own expense.

This Class A digital apparatus complies with Canadian ICES-003.

Cet appareil numérique de la classe A est conforme à la norme NMB-003 du Canada.

- RF exposure compliance

1) To comply with FCC/IC RF exposure compliance requirements, a separation distance of at least 20 cm must be maintained between the antenna of this device and all persons.

2) This transmitter must not be co-located or operating in conjunction with any other antenna or transmitter.

- RSS-210 Low Power Device

Operation is subject to the following two conditions:

(1) this device may not cause interference, and

(2) this device must accept any interference, including interference that may cause undesired operation of the device.

- According to RSS-Gen 7.1.4,

This device has been designed to operate with the antennas listed below, and having a maximum gain of 2.62dB. Antennas not included in this list or having a gain greater than 2.62dB are strictly prohibited for use with this device.

The required antenna impedance is 50ohms.

Detachable antenna: DN57 2.4GHz SMA-PR

To reduce potential radio interference to other users, the antenna type and its gain should be so chosen that the equivalent isotropically radiated power (e.i.r.p.) is not more than that permitted for successful communication.

### **--- CE ---**

- We declare, under our solo responsibility, that the products identified in this declaration are in conformity with the requirements of Council Directive:

1999/05/EC on the harmonization of the laws of Member States relating to electrical

equipment designed for use within certain voltage limits.

2006/95/EC on the harmonization of the laws of the Member States relating to Low Voltage Directive

2002/96/EC on the approximation of the laws of the Member States relating to Waste Electrical and Electronic Equipment Directive.

2002/95/EC on the approximation of the laws of the Member States relating to the restriction of the use of certain hazardous substances in electrical and electronic equipment

**Safety** : EN60950-1:2006/A11:2009

**EMC** : EN 301 498-1 V1.8.1

EN 301 498-17 V2.1.1

EN 55022:2006+A1:2007

EN 61000-3-2:2006

EN 61000-3-3:1995+A1:2001+A2:2005

EN 55024:1998+A1:2001+A2:2003

**R&TTE** : ETSI EN 300 328 V1.7.1

**Manufacturer**

2-44 Oenakayama-cho, Nishikyo-ku, Kyoto-city, Kyoto, Japan

Phone: +81 75-335-1050 Fax: +81 75-335-1051

Kyoto Microcomputer Co., Ltd. (KMC)

- About destruction in EU within the region.:

The use of the WEEE symbol indicates that this product may not be treated as household waste. By ensuring this product is disposed of correctly, you will help protect the environment. For more detailed information about the recycling of this product, please contact your local authority, your household waste disposal service provider or the shop where you purchased the product.



--- Australia ---



ACN 060 566 083

# Table of Contents

1. Introduction .....	7
1.1. Accessories .....	7
1.2. PARTNER-CTR Panels.....	8
1.3. Changing Batteries .....	12
1.4. Setup Procedure .....	13
2. Setting up PARTNER-CTR.....	14
2.1. Connecting Controller .....	14
2.2. Connecting peripheral devices.....	15
2.3. Connecting to PC .....	18
3. Installing / Uninstalling PARTNER-CTR Software .....	20
3.1. How to Install the PARTNER-CTR Debugger .....	20
3.2. How to Uninstall the PARTNER-CTR Debugger .....	21
3.3. How to install the PARTNER-CTR Capture Software .....	22
3.4. How to Uninstall the PARTNER-CTR Capture Software .....	23
4. Starting PARTNER-CTR Software .....	24
4.1. Turning on the power of PARTNER-CTR.....	24
4.2. Installing PARTNER-CTR Debugger USB Driver .....	25
4.3. Installing PARTNER-CTR Capture USB Driver .....	27
4.4. Starting the PARTNER-CTR Debugger Software Using the Shortcut .....	29
4.5. Starting the PARTNER-CTR Capture Software Using the Shortcut.....	31
4.6. Terminating PARTNER-CTR .....	33
5. Appendix .....	34
5.1. Manual Installation of the USB Driver.....	34
5.2. If the PARTNER-CTR/S Debugger Software Does not Startup.....	38
6. Specification .....	40
6.1. Product Specification .....	40



# 1. Introduction

## 1.1. Accessories

The following accessories are supplied with the PARTNER-CTR. First, make sure you have all of these accessories.

1. PARTNER-CTR Setup Manual	1
2. PARTNER-CTR Main Unit	1
3. PARTNER-CTR Controller	1
4. Cable for the PARTNER-CTR Controller	2
5. Classic Controller for debugging (Classic KUMI Controller)	1 *1)
6. Radio aerial (DN57 2.4GHz SMA-PR)	1
7. Power Adapter	1
8. IrDA Module (+Connector, Extend Cable)	1
9. USB Cable	1 or 2 *2)
10. ferrite cores (RFC-4/KITAGAWA INDUSTRIES CO.,LTD.)	1 *1)

\*1) It is not included in PARTNER-CTR Capture.

\*2) 2 cables are included in PARTNER-CTR Capture Debugger.

**Note:** The PARTNER-CTR software is **NOT** bundled with the hardware. You will have to download the installer from the **DEVELOPER TOOL DOWNLOAD SITE**.

## 1.2. PARNER-CTR Panels

### Front Panel

The front panel contains switches, card slots, controller connectors and so on.

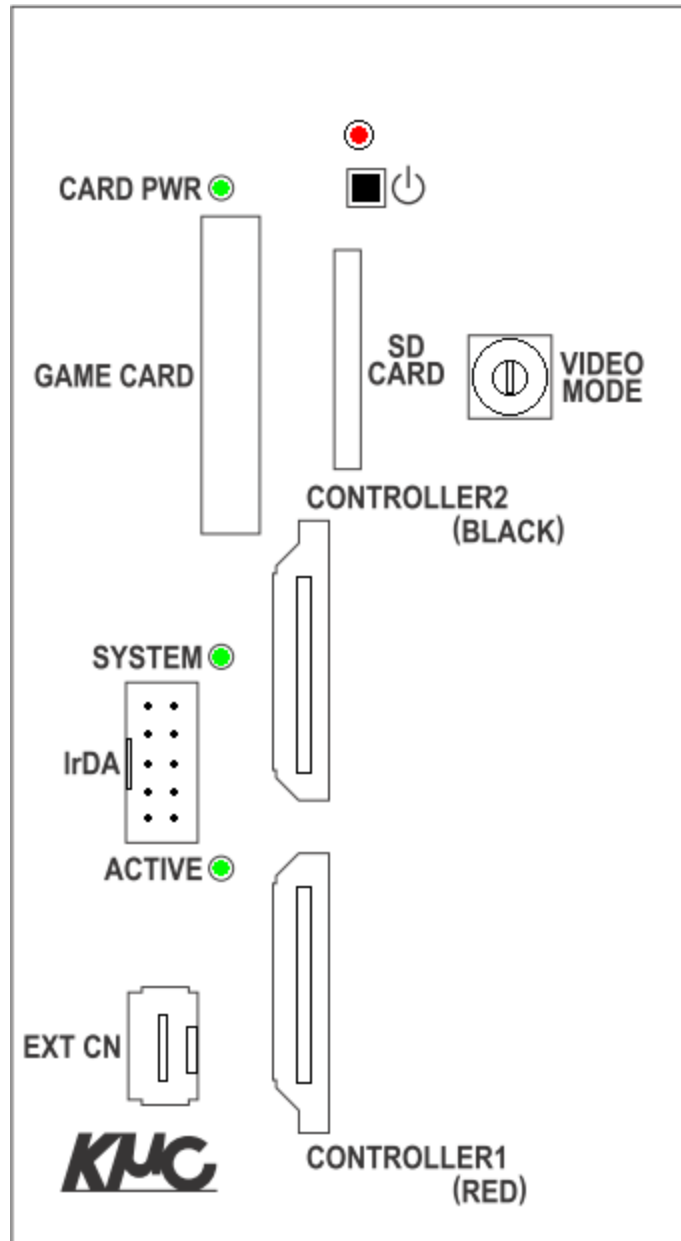


Figure 1 Front Panel

### Power LED (red)

Lights up while the unit is powered on.



### **Power Switch (⏻)**

The power switch is of the push-button type. Pressing this switch turns the power on.  
The power is turned off by a long press of the switch (about 3 to 8 seconds).

### **Card Power LED (CARD PWR)**

Lights up while the card is powered on.

### **Game Card Slot (GAME CARD)**

Insert CTR-compatible game cards.

### **SD Card Slot (SD CARD)**

Insert CTR-compatible SD cards.

### **Video Mode (VIDEO MODE) (Capture/Capture Debugger only)**

A rotary switch used when using the capture function. Rotate it to change the video format output to DV OUT1, DV OUT2 or AV OUT.

### **System LED (SYSTEM)**

Blinks while the PARTNER-CTR is in an abnormal state or the update process is running.

### **Active LED (ACTIVE)**

Blinks when the PC is accessing the unit.

### **Controller 1 Connector (CONTROLLER1 RED)**

Connect the controller to this connector using the included cable with red lines.

### **Controller 2 Connector (CONTROLLER2 BLACK)**

Connect the controller to this connector using the included cable with the black mark.

### **IrDA Connector (IrDA)**

Connect an IrDA module to this connector.

### **Debug Controller Connector (EXT CN) (Debugger/Capture Debugger only)**

Connect the Classic Controller for debugging.

## Rear Panel

The rear panel contains a USB connector for connecting the hardware to a host interface as well as DC jack for connecting the hardware to an external power source. PARTNER-CTR Capture and Capture Debugger also have a video output.

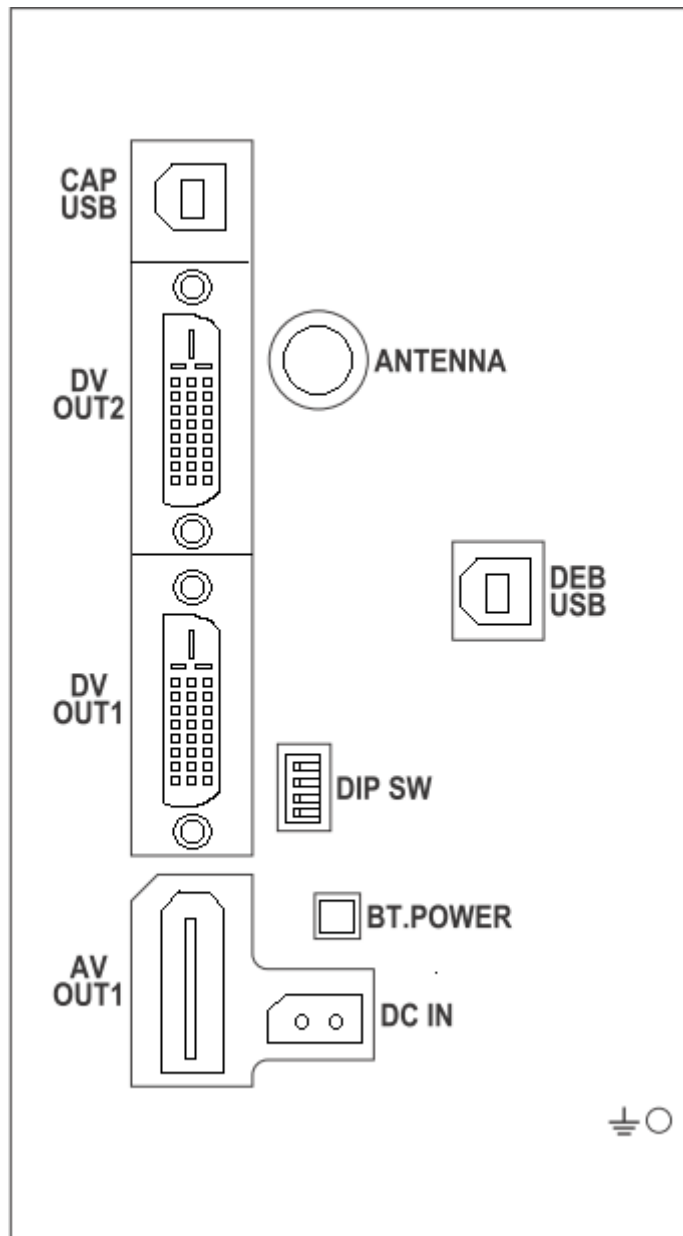


Figure 2 Rear Panel

### USB Connector for the Capture (CAP USB) (Capture/Capture Debugger only)

Connect a USB cable to this connector to use the capture function.

**Video Out 1 (DV OUT1)** (Capture/Capture Debugger only)

**Video Out 2 (DV OUT2)** (Capture/Capture Debugger only)

Connect a DV cable to output monitor signals.

**Analog/Audio Out (AV OUT1)** (Capture/Capture Debugger only)

Connect an analog/audio cable (AV cables for Nintendo Wii can be used).

**Antenna Connector (ANTENNA)**

Connect a wireless LAN antenna (DN57 2.4GHz SMA-PR) supplied with the product.

**USB Connector for the Debugger (DEB USB)** (Debugger/Capture Debugger only)

Connect a USB cable to this connector to use the debugger function.

**DIP Switches (DIP SW)**

All switches are OFF by default. Do not change the default settings at this point.


**Battery Power Switch (BT.POWER)**

If this switch is released, all power, including the backup power for the control processor of the game console, is turned OFF. If this switch is turned off while the main unit is powered on, the main unit will also be powered off. The stored backup data will also be initialized.

If the switch is pressed when it is OFF, the switch will be turned ON.

**Power Connector (DC IN)**

Connect the power adapter supplied with the product.

**Ground Connector (  )**

Connect a ground wire to this connector.

### 1.3. Changing Batteries

AA batteries are housed in the main unit to back up data. If these batteries run out, the main unit cannot be powered on and the backup data will be lost.

Typical battery life is between 1 and 1.5 years, but we recommend changing the batteries periodically.

To replace the batteries, loosen the screws on the left, right, front and rear panels (1 screw on each panel, 4 screws altogether), and then slide up the top cover. Replace the two AA batteries in the battery holder located inside with new ones, and then put the case back together.

**Note:** When powering off the main unit, make sure to turn it off correctly with a long key press of the power switch. If the power is turned off in an inappropriate way (e.g. by pulling out the power adapter), the internal batteries will be used up.

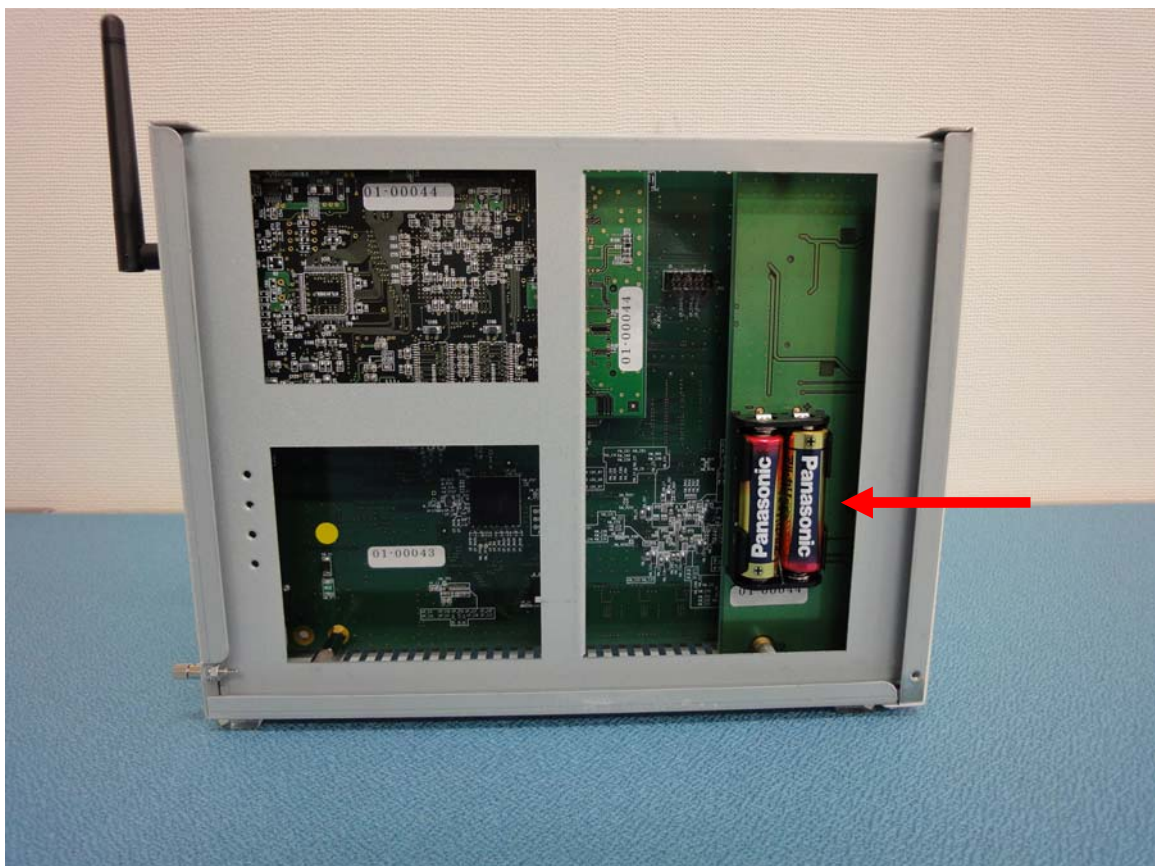


Figure 3 PARTNER-CTR Internal Battery

## 1.4. Setup Procedure

The following text describes the overview of the PARTNER-CTR setup procedure for first-time users. Follow the procedure below to set it up

### 1. Setting up PARTNER-CTR

Connect the PARTNER-CTR to peripheral devices, and to a PC via USB. In detail, please refer to “2. [Setting up PARTNER-CTR](#)”(page14)..

### 2. Setting up Software

For debugging, the debugger software should be installed. For capturing, the capture software should be installed. In detail, please refer to “3 [Installing/Uninstalling PARTNER-CTR Software](#)”(page20)..

### 3. Starting Software

To use debugger software or capture software, the driver should be installed. After that, they can start by shortcut in start menu. In detail, please refer to “4 [Starting PARTNER-CTR Software](#)”(page24)..

## 2. Setting up PARTNER-CTR

### 2.1. Connecting Controller

Connect the PARTNER-CTR controller to the PARTNER-CTR main unit with the supplied controller cable.

Connect the cable with red lines to the CONTROLLER1 (RED) connector, and connect the other end to the Controller RED. Use the other controller cable (with no red line) to connect the CONTROLLER2 (BLACK) to the Controller BLACK.

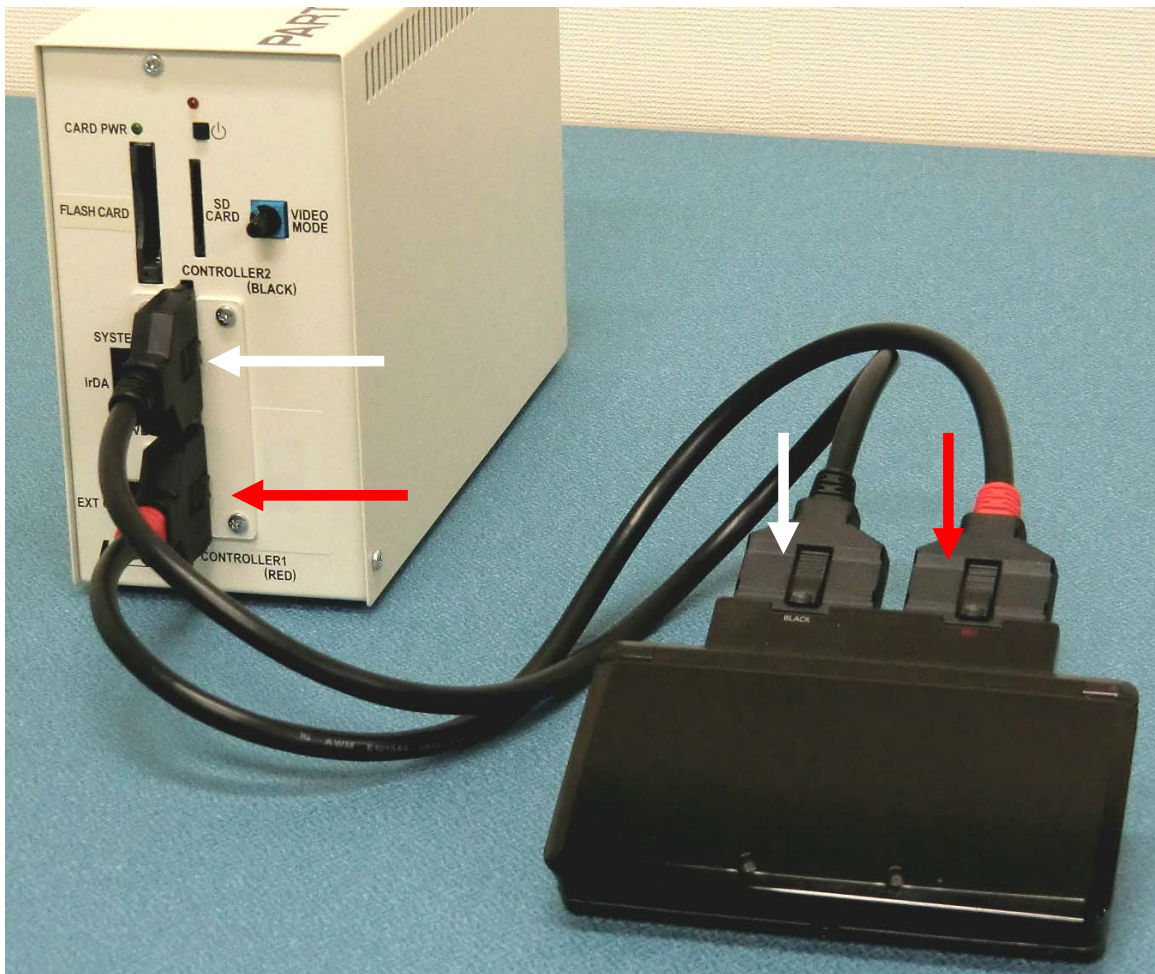


Figure 4 Connecting Controller

## 2.2. Connecting peripheral devices

### Connecting IrDA module

To use an IrDA module, connect the module to the IrDA connector using the provided cable.

The conversion connector is connected with the IrDA module in the state of the shipment. Please connect it with the IrDA connector as it is.

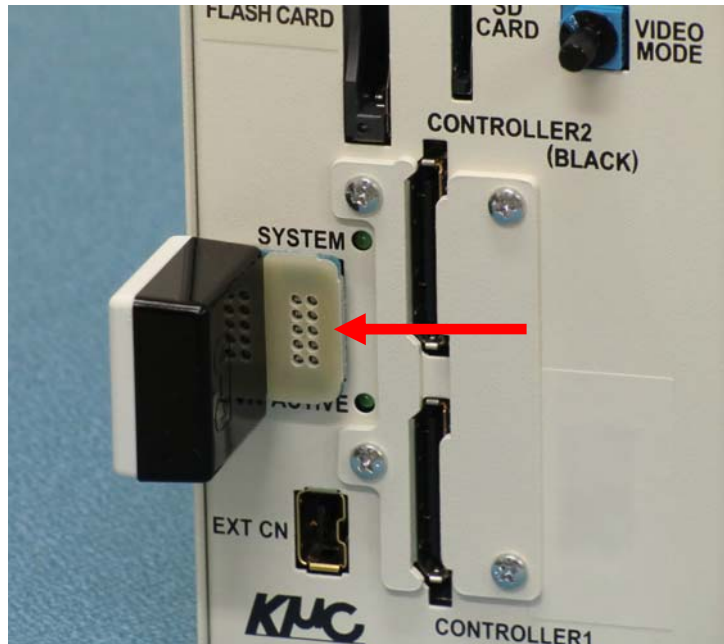


Figure 5 Connecting IrDA module

An extension cable is also bundled in PARTNER-CTR.

If you want to use IrDA module far from main unit, please remove the conversion connector from the IrDA module, connect the extension cable, and connect it with the IrDA connector.

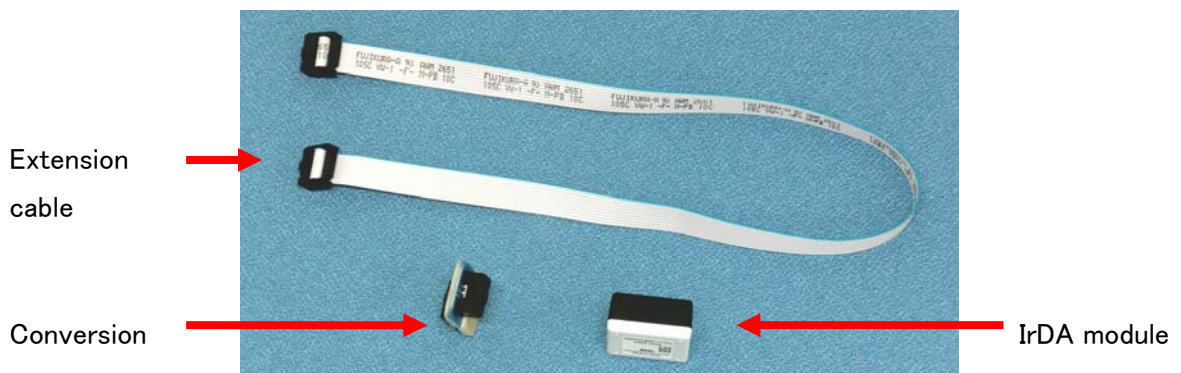


Figure 6 IrDA module, Conversion connector, and Extension cable

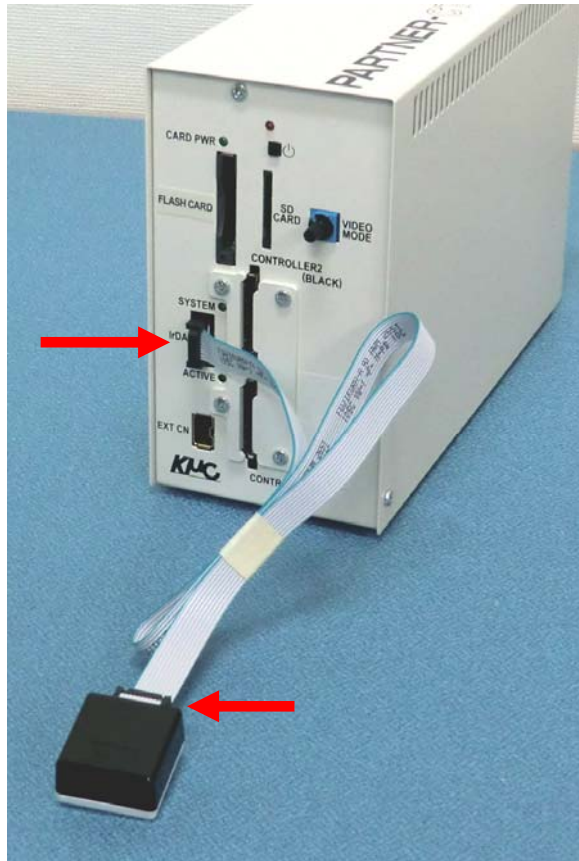


Figure 7 Connecting IrDA module with Extension cable

### Connecting Radio aerial

To use WLAN, connect the bundled radio aerial (DN57 2.4GHz SMA-PR) with the ANTENNA connector.



Figure 8 Connecting Radio aerial



### Connecting Classic Controller (Debugger / Capture Debugger only)

To use debug HID, connect the bundled classic controller with the EXT CN connector.

Attach the ferrite cores (made by KITAGAWA Corporation) to the cable on the classic controller.

The ferrite core is set up at the position of 20mm by the EXT CN connector. (see the Figure 9 Connecting Classic Controller)

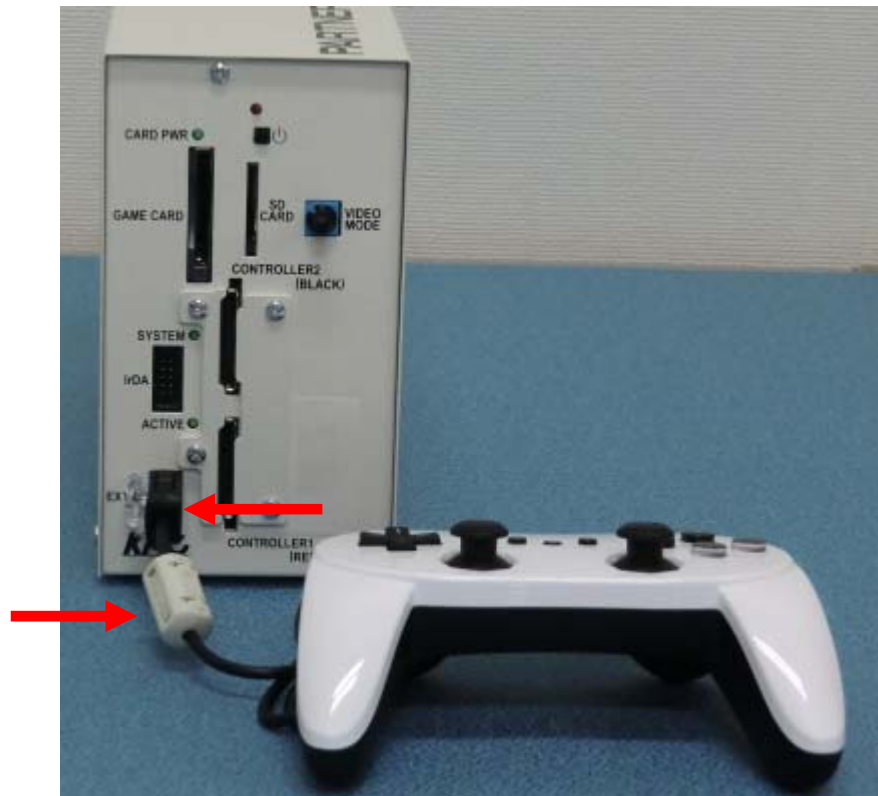


Figure 9 Connecting Classic Controller

## 2.3. Connecting to PC

### Connecting USB

For debugging, connect the USB cable with the DEB USB connector, and connect it with PC.

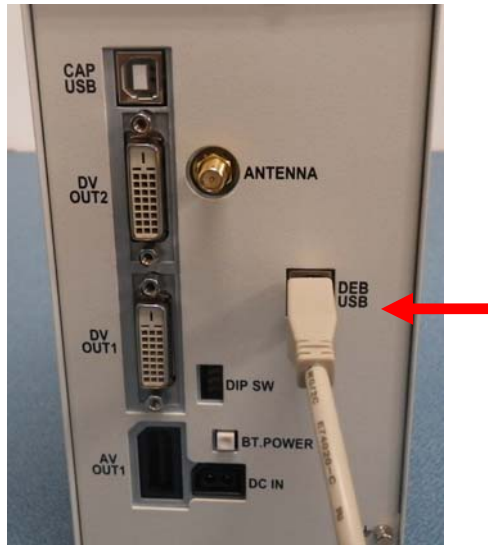


Figure 10 Connecting DEB USB

For capturing, connect the USB cable with the CAP USB connector, and connect it with PC.



Figure 11 Connecting CAP USB

### Connecting power supply

Plug in the power adapter, and connect it with the DC IN connector.

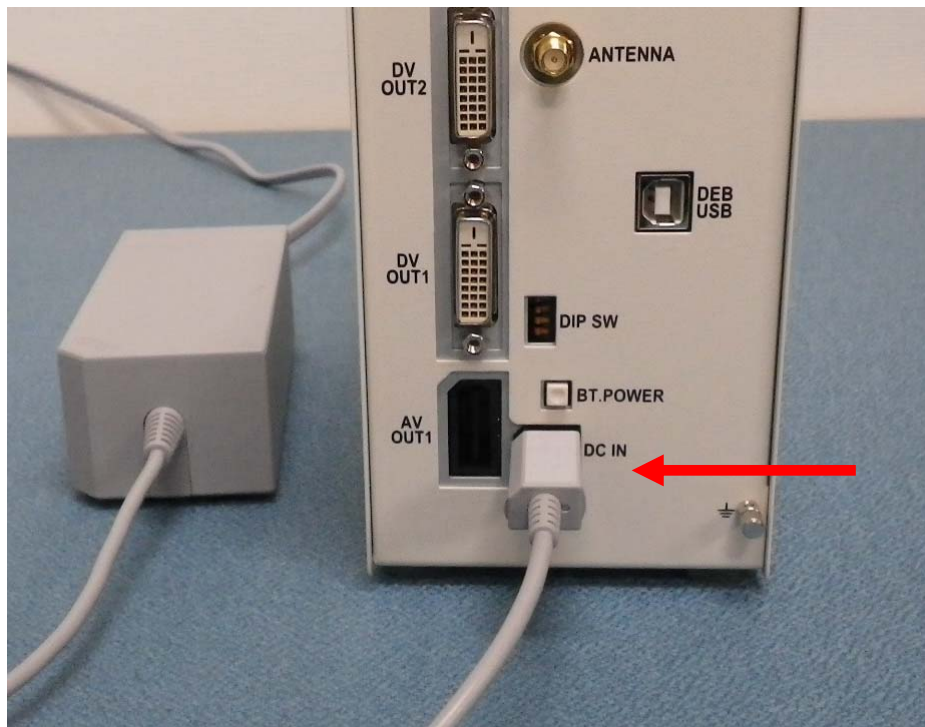


Figure 12 Connecting power supply

### 3. Installing / Uninstalling PARTNER-CTR Software

You will have to install the debugger software to perform source debugging, and the capture software to perform capturing on PARTNER-CTR.

#### 3.1. How to Install the PARTNER-CTR Debugger

Start up Windows XP/Vista/7 and install the PARTNER-CTR.

##### Downloading the Setup Program

The PARTNER-CTR/S software is **NOT** bundled with the hardware. You will have to download the setup program from the **DEVELOPER TOOL DOWNLOAD SITE**.

##### Starting the Setup Program

To install the PARTNER-CTR, run the setup program (PARTNER\_CTR\_XXX.EXE) that you downloaded in the previous step. (Refer to “Figure 13 Screen Displayed During Installation”.) Perform installation following the instructions given by the setup program. Once the installation process is complete, a shortcut icon for the PARTNER-CTR is created in the Start menu.

[Note] Be sure to store the PARTNER-CTR installer you used somewhere safe after the installation has completed.

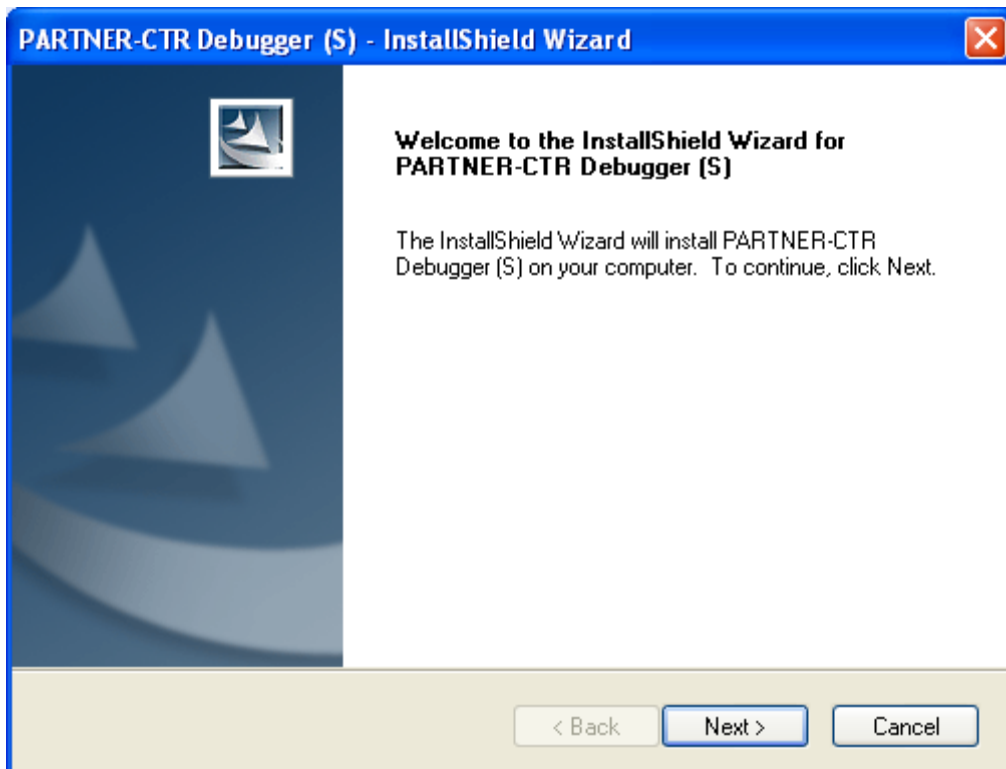


Figure 13 Screen Displayed During Installation

If the user performing the setup procedure does not have administrator rights, a message shown in "Figure 14 Message Displayed During Setup" may appear and the USB drivers may not be installed. To install the USB driver in such a case, refer to "5.1 [Manual Installation of the USB Driver](#)"(page34)



Figure 14 Message Displayed During Setup

### 3.2. How to Uninstall the PARTNER-CTR Debugger

Double-click the [Add or Remove Programs] icon in the Control Panel and select "PARTNER-CTR" from the list, then click "Remove".

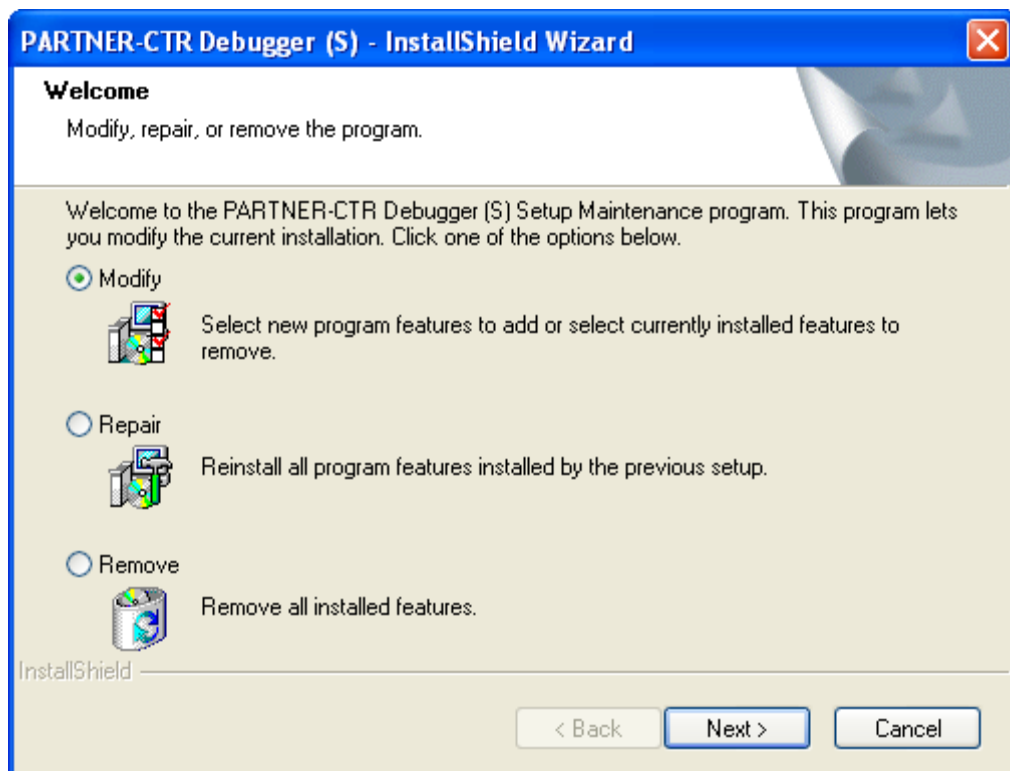


Figure 15 Screen Displayed During Uninstallation

### 3.3. How to install the PARTNER-CTR Capture Software

Start up Windows XP/Vista/7 and install the Capture software.

#### Downloading the Setup Program

The Capture software is **NOT** bundled with the hardware. You will have to download the installer from the **DEVELPER TOOL DOWNLOAD SITE**.

#### Starting the Setup Program

To install the PARTNER-CTR, run the setup program (PARTNER-CTR-CAPTURE\_XXXX.exe) that you downloaded in the previous step. (Refer to “Figure 16 Screen Displayed During installation”.) Perform installation following the instructions given by the setup program.

Once the installation process is complete, a shortcut icon for the Capture software is created in the Start menu.

[Note] Be sure to store the PARTNER-CTR Capture installer you used somewhere safe after the installations has completed.

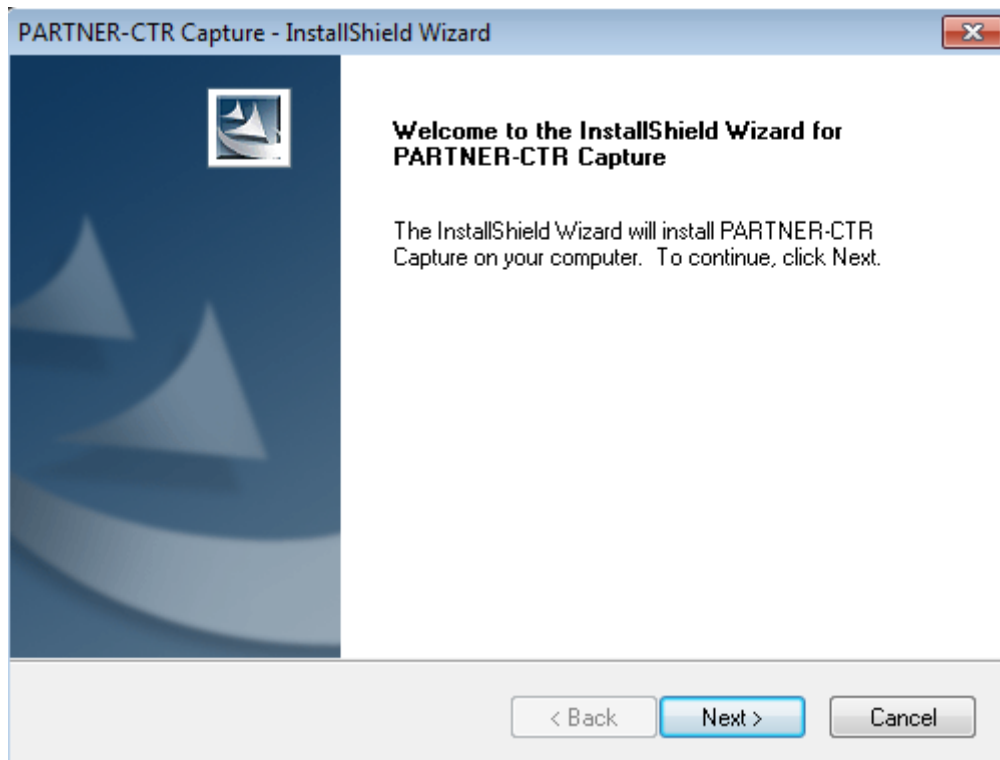


Figure 16 Screen Displayed During installation

If the user performing the setup procedure does not have administrator rights, a message shown in “Figure 17 Message Displayed During Setup” may appear and the USB drivers

may not be installed. To install the USB driver in such a case, refer to "5.1 [Manual Installation of the USB Driver](#)" (page34)

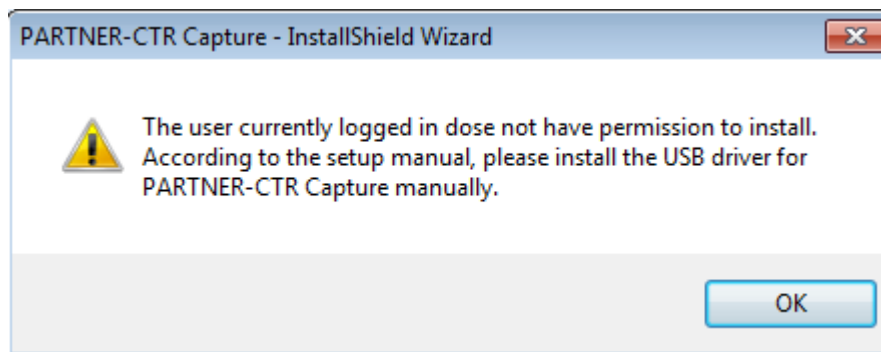


Figure 17 Message Displayed During Setup

### 3.4. How to Uninstall the PARTNER-CTR Capture Software

Double-click the [Add or Remove Programs] icon in the Control Panel and select "PARTNER-CTR Capture" from the list, then click "Remove".

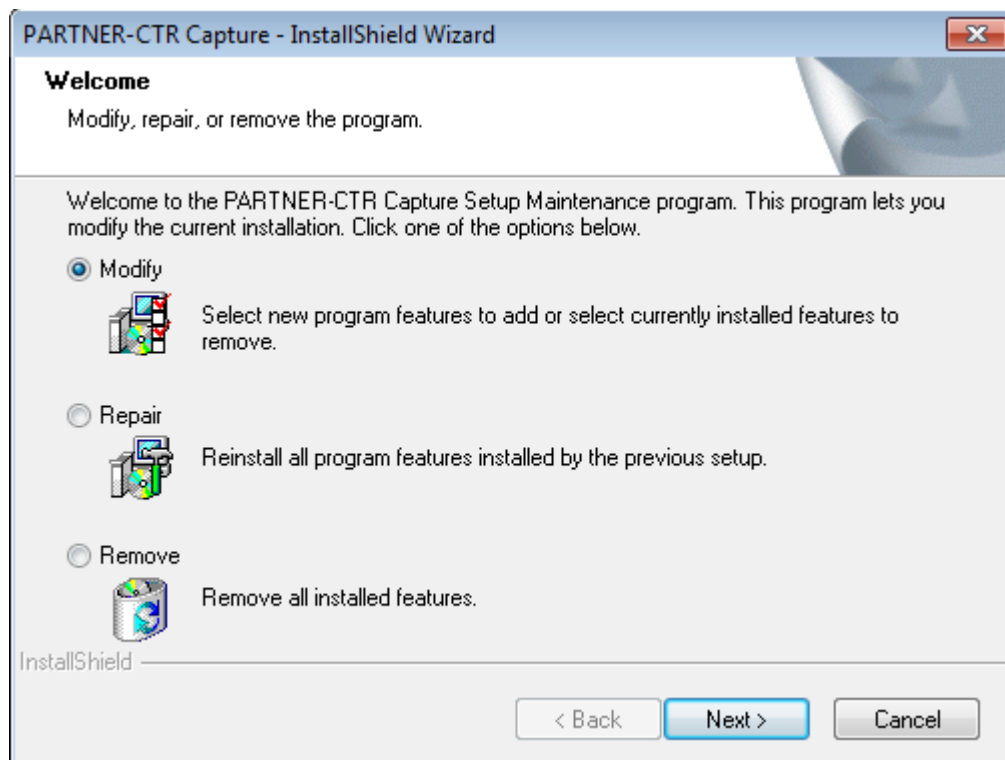


Figure 18 Screen Displayed During Uninstallation

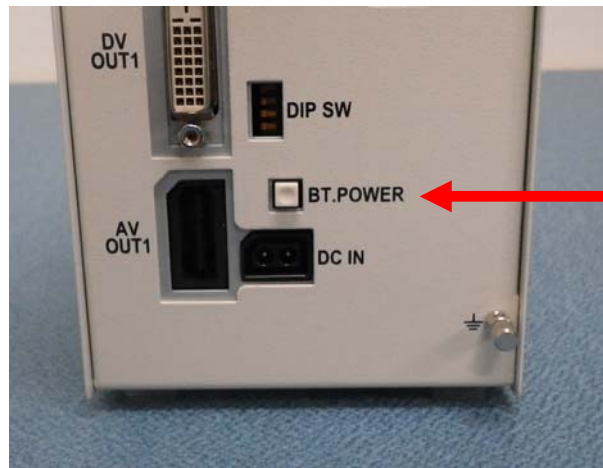
## 4. Starting PARTNER-CTR Software

### 4.1. Turning on the power of PARTNER-CTR

#### Checking BT.POWER

In the state of the shipment, BT.POWER is OFF (released).

To use PARTNER-CTR, turn on the BT.POWER.



Confirm BT. POWER is ON (pressed)

Figure 19 BT.POWER

#### POWER SW

Push the power switch, and confirm the power LED lights up.



Confirm power LED lights up

Figure 20 POWER SW

Pressing the power switch once again or the power switch on the controller will power on the entire system. When the debugger software or the capture software starts, the power of controller is automatically turned on.

If the main unit cannot be powered on, the controller cannot be powered on, or the debugger does not start up, please turn the BT.POWER switch on the rear panel from OFF to ON.



If the unit still does not function correctly, the batteries in the main unit may be dead. Refer to "1.3 [Changing Batteries](#)" (page12)

When PARTNER-CTR is turned on and it is the first time to connect with PC or newly connected with different USB port, the USB driver installation starts.

## 4.2. Installing PARTNER-CTR Debugger USB Driver

The PARTNER-CTR USB driver is automatically installed when the debugger setup procedure is performed using an administrator account.

If the setup procedure is performed using a non-administrator account, refer to "5.1 [Manual Installation of the USB Driver](#)" (page34) to install the driver.

### [Installation under Windows Vista, Windows 7]

The USB driver is automatically installed.

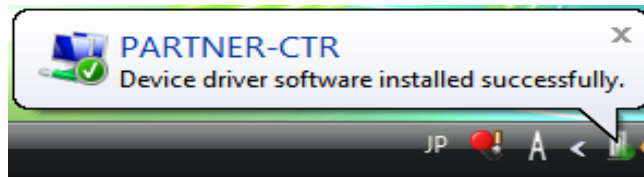


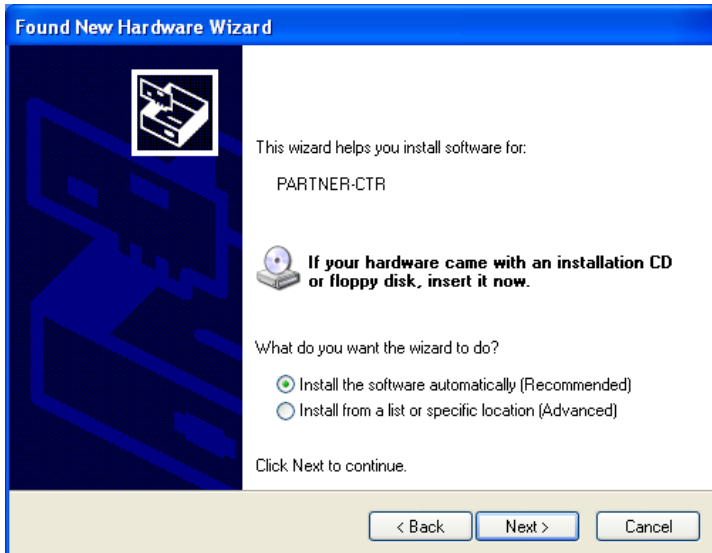
Figure 21 Installing the USB Driver

### [Installation under Windows XP]

Follow the procedure below to install the USB driver under Windows XP.



Select [No, not this time] and click [Next] to continue.



Select [Install the software automatically] and click [Next] to continue.



The USB driver installation is complete.

### 4.3. Installing PARTNER-CTR Capture USB Driver

The PARTNER-CTR Capture USB driver is automatically installed when the debugger setup procedure is performed using an administrator account.

If the setup procedure is performed using a non-administrator account, refer to "5.1 [Manual Installation of the USB Driver](#)" (page34) to install the driver.

#### [Installation under Windows Vista, Windows 7]

The USB driver is automatically installed.

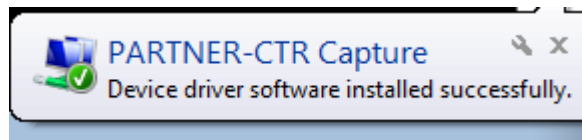


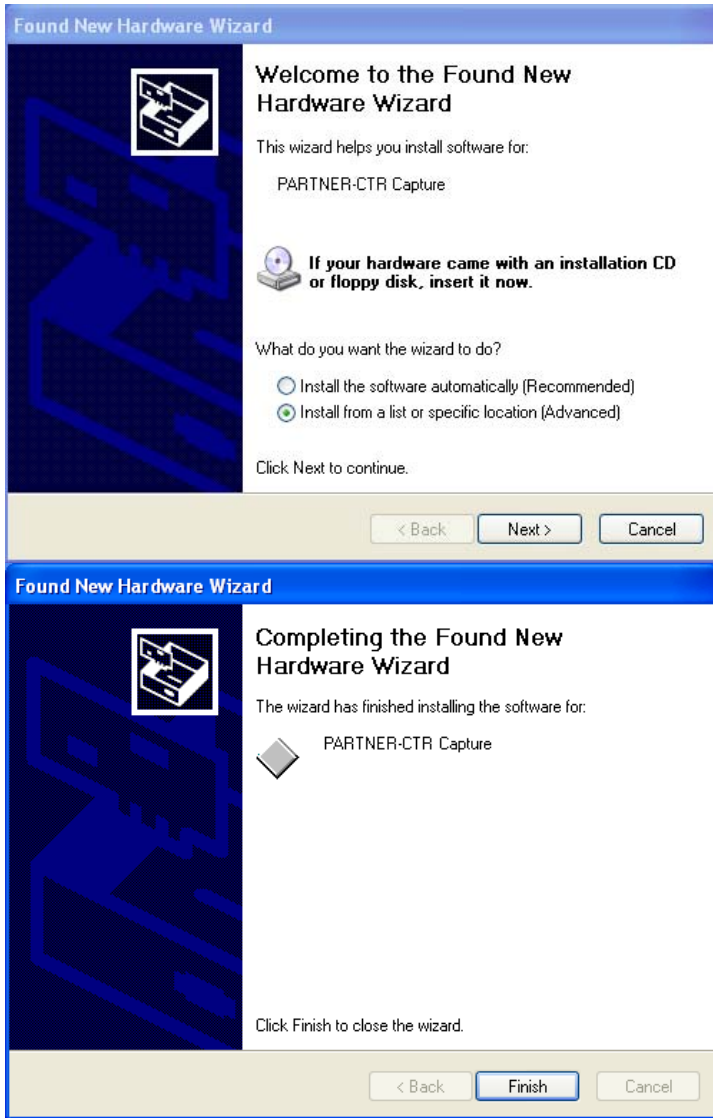
Figure 22 Installing the USB Driver

#### [Installation under Windows XP]

Follow the procedure below to install the USB driver under Windows XP.



Select [No, not this time] and click [Next] to continue.



Select [Install the software automatically] and click [Next] to continue.

The USB driver installation is complete.

#### 4.4. Starting the PARTNER-CTR Debugger Software Using the Shortcut

If single PARTNER-CTR device is connected to your computer, you can start the PARTNER-CTR /S debugger using a shortcut.

If multiple PARTNER-CTR devices are connected to a single PC, refer to the debugger appendix manual.

##### Starting the Shortcut

Select "PARTNER-CTR Debugger " from the Start menu to launch the software.

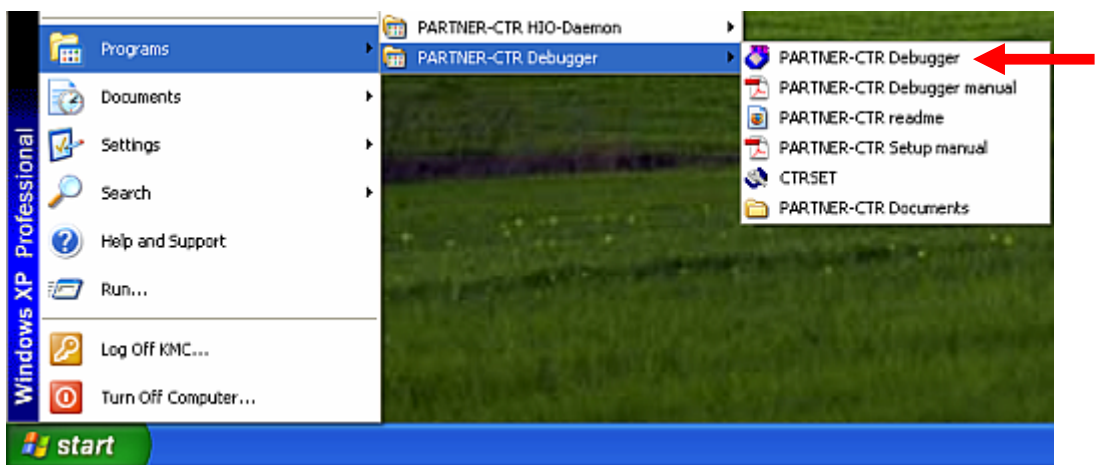


Figure 23 Shortcut Location

## PARTNER-CTR Debugger Startup Screen

Once the PARTNER-CTR debugger is launched, the following debug window will be displayed

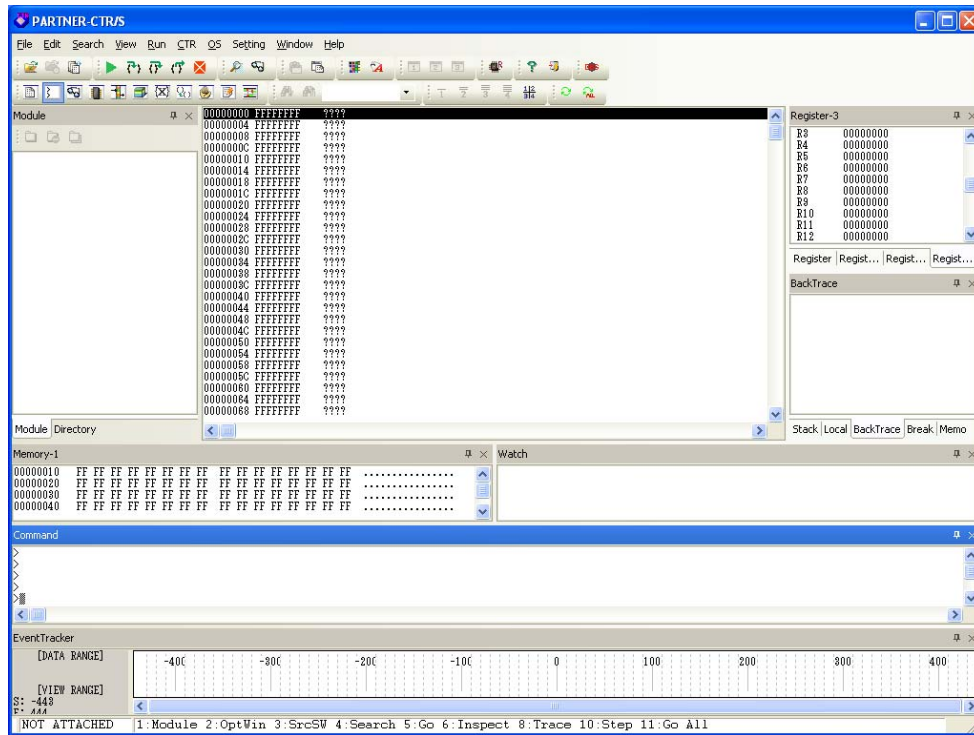


Figure 24 PARTNER-CTR Start up Screen

## 4.5. Starting the PARTNER-CTR Capture Software Using the Shortcut

### Starting the Shortcut

Select "PARTNER-CTR Capture" from the start menu to launch the software.

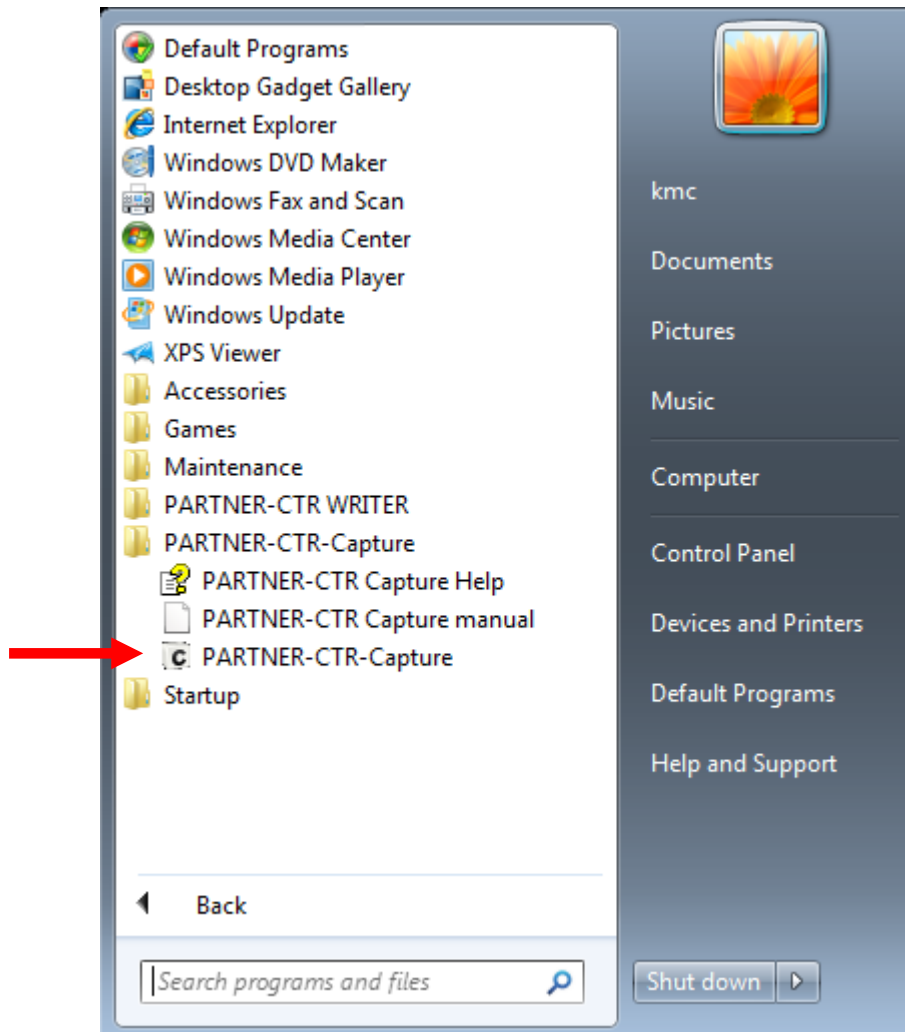


Figure 25 Shortcut Location

## PARTNER-CTR Capture Startup Screen

Once the PARTNER-CTR Capture is launched, the following capture window will be displayed

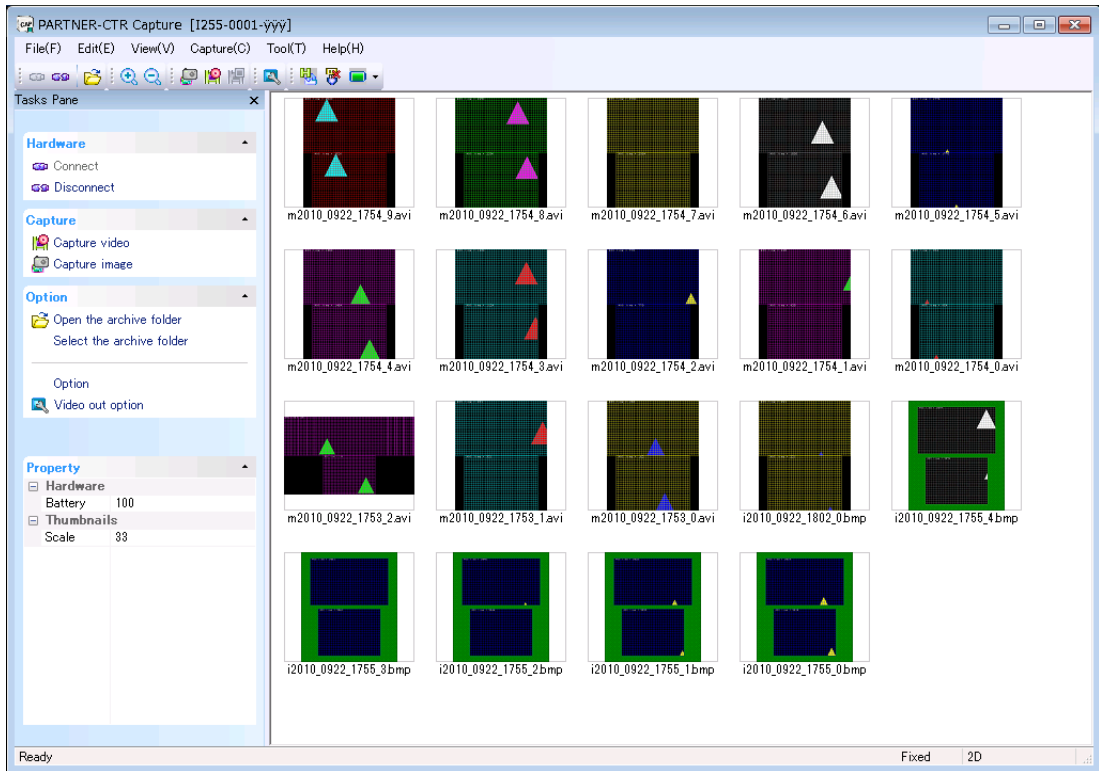


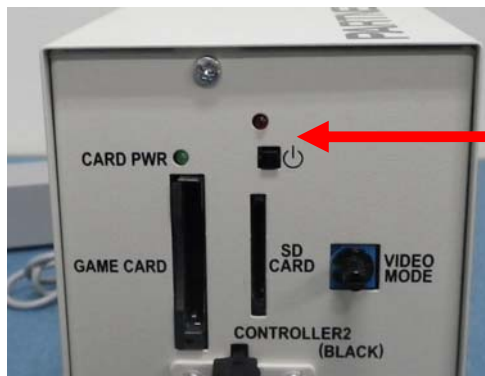
Figure 26 PARTNER-CTR Capture Start up Screen



## 4.6. Terminating PARTNER-CTR

Power off the PARTNER-CTR main unit after exiting the debugger and capture software except under abnormal conditions.

The power is turned off with a long press of the power switch (about 8 seconds).



Confirm the Power LED is turned off.

図 1 電源SWのOFF

**Notes:** Powering off the main unit in an inappropriate way (e.g. by pulling out the AC adapter) may cause the target to malfunction at next startup, because the power-off process is not carried out correctly by the target's control processor. This also uses up the batteries in the main unit.

There are cases where the unit cannot be powered off by a long press of the power switch (e.g. when the control processor in the game console goes out of control for some reason). In such cases, hold down the power switch for a longer time (about 15 seconds).

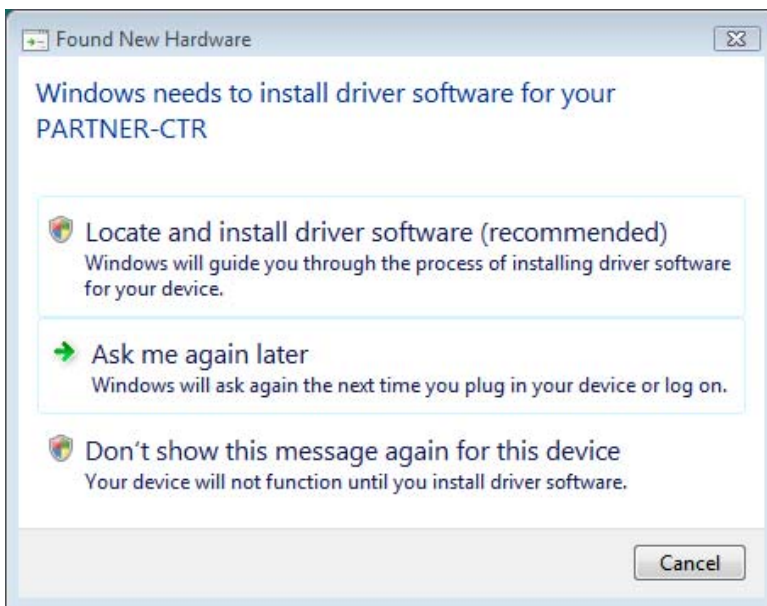
If the unit still cannot be powered off, use the BT.POWER switch on the rear panel to power off the unit.

## 5. Appendix

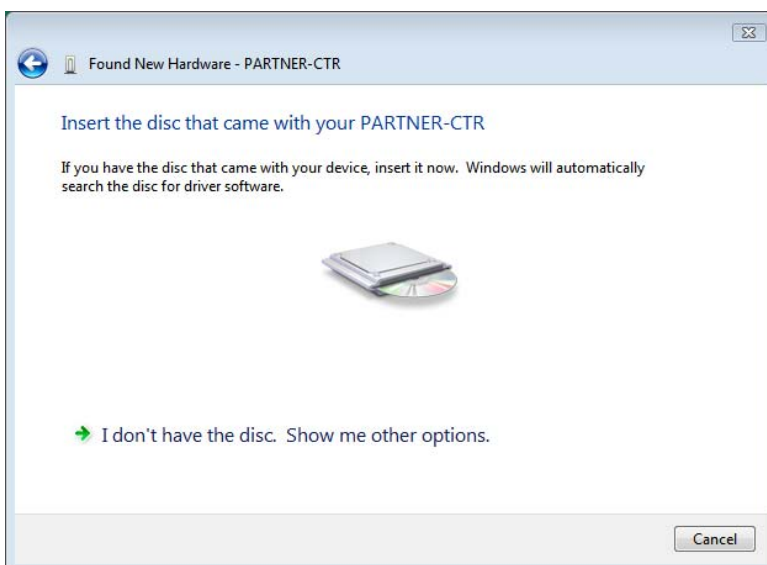
### 5.1. Manual Installation of the USB Driver

If the USB driver was not automatically installed, follow the procedure below to manually install the USB driver for the PARTNER-CTR. To start installer, connect the PARTNER-CTR to the PC with the USB cable using, "2 [Setting up PARTNER-CTR](#)" (page14) for reference, then power on the hardware.

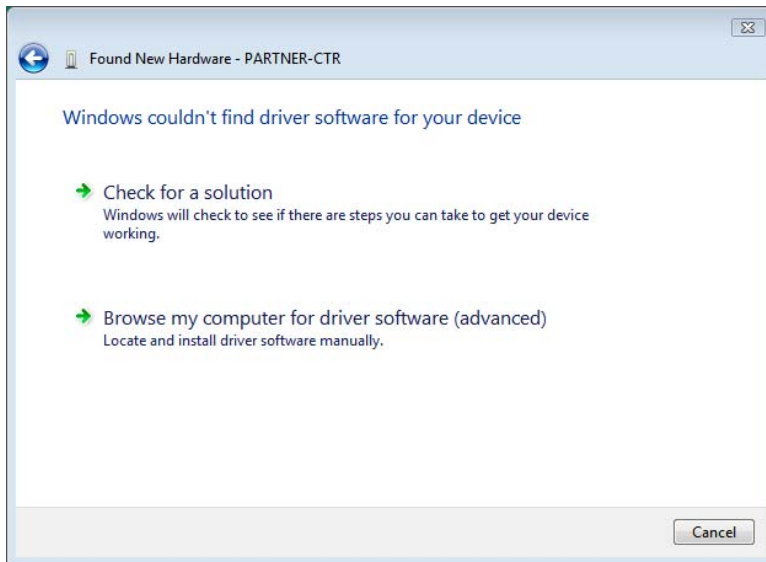
#### Installation Procedure for Windows Vista and Windows 7



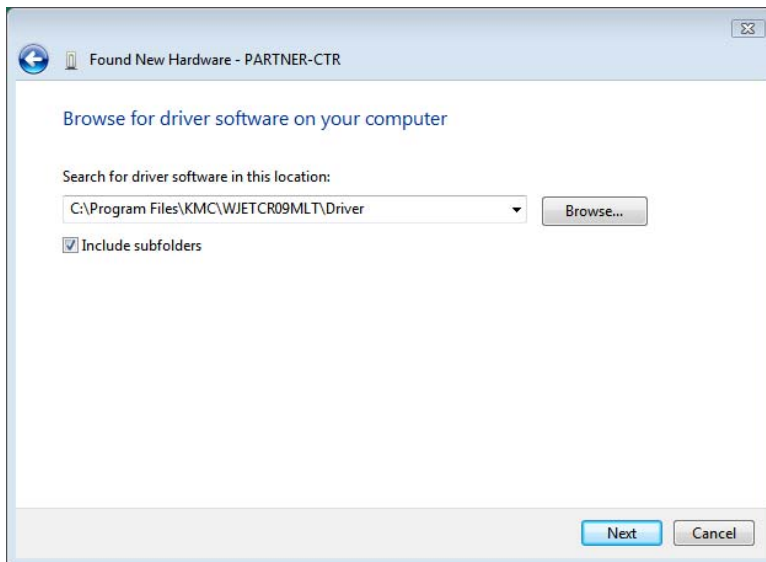
Once PARTNER-CTR is detected by the OS, the dialog shown on the left will be displayed. To Proceed, click [Locate and install driver software].



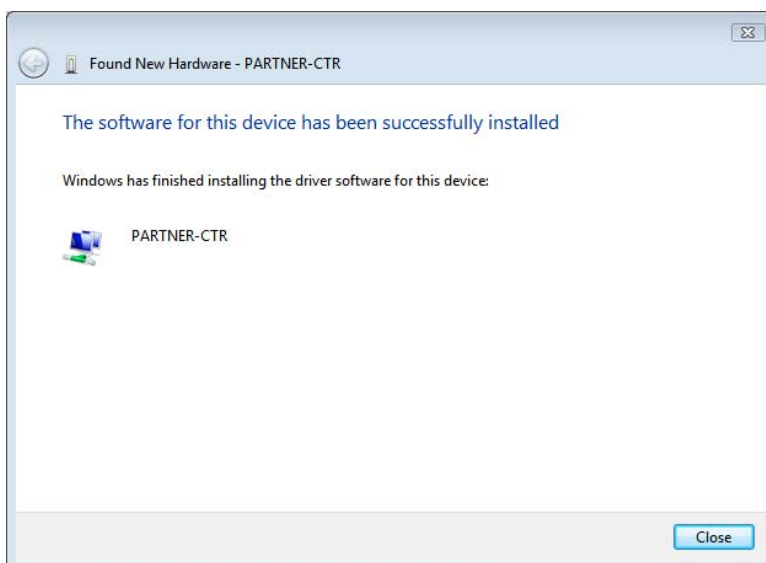
Select [I don't have the disc. Show me other options].



Click [Browse my computer for driver software (advanced)]



Specify the Driver folder\*1 that is located in the installation folder created in "Installing / Uninstalling PARTNER-CTR Software", then click [Next] to continue.



If the USB driver was installed successfully, you will see the screen shown on the left.

\*1 The default installation folder of the PARTNER-CTR/S and Capture software differs depending on the user account used during installation.

[Administrator Account]

PARTNER-CTR/S: C:\Program Files\KMC\WJETCTR09S

Capture Software: C:\Program Files\KMC\PTCTRCap

[Normal User Account]

PARTNER-CTR/S: C:\Users\*User Name*\AppData\Roaming\KMC\WJETCTR09S

Capture Software: C:\Users\*User Name*\AppData\Roaming\KMC\PTCTRCap

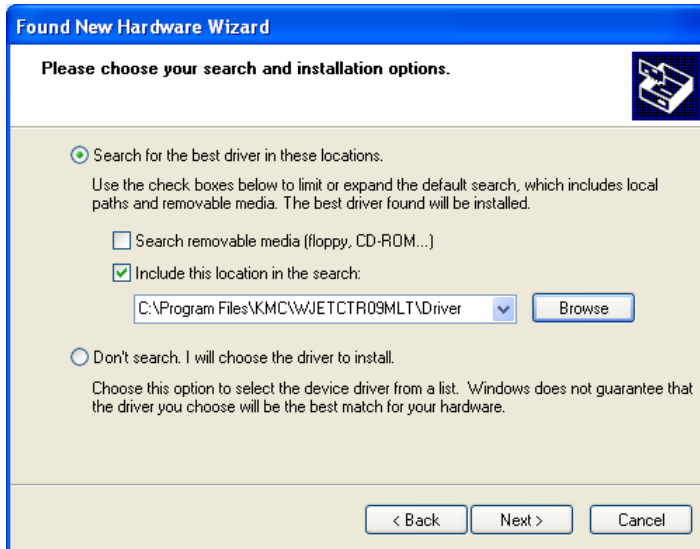
### Installation Procedure for Windows XP



Select [No, not this time] and click [Next] to continue.



Select [Install from a list or specific location] and then click the [Next] to continue.



Select [Search for the best driver in these locations], Then choose the [Include this location in the search] option. Specify the [Driver folder]\*2 within your PARTNER-CTR installation directory, then click the [Next] to continue.



If the USB driver was installed successfully, you will see the screen shown on the left.

\*2 The default installation folder of the PARTNER-CTR/S and Capture software differs depending on the user account used during installation.

[Administrator Account]

PARTNER-CTR/S: C:\Program Files\KMC\WJETCTR09S

Capture Software: C:\Program Files\KMC\PTCTRCap

[Restricted Account]

PARTNER-CTR/S: C:\Documents and Settings\User Name\Application Data\KMC\WJETCTR09S

Capture Software: C:\Documents and Settings\User Name\Application Data\KMC\PTCTRCap

## 5.2. If the PARTNER-CTR/S Debugger Software Does not Startup

If the PARTNER failed to start up, one of the messages below appears. Take an appropriate measure according to the message displayed. If no message is displayed and the PARTNER does not start up, power off the target and the PARTNER-CTR main unit, and then, power on the target and the PARTNER-CTR again to see if it starts up successfully.

### **Can't connect PARTNER-CTR**

If this message is displayed, set a longer timeout value (refer to the appendix of the debugger manual) or power the PARTNER-CTR off and back on again and restart the debugger.

### **Cannot find PARTNER-CTR on USB Bus. If exists, please press its reset switch.**

This is displayed if PARTNER-CTR could not be found on the PC's USB bus.

Make sure that the PARTNER-CTR is connected via USB, and that PARTNER-CTR is powered on.

Try restarting the debugger software either power cycling or pressing the reset switch.

If the serial number of the PARTNER-CTR is specified as PORT ADDRESS in the CFG file, make sure that the specified serial number corresponds to the actual serial number of the PARTNER-CTR main unit.

### **Wrong configuration file (JETCTR09.CFG) format**

This is displayed if there is an error with a field in the CFG file. The line in question will also be displayed. If this occurs, correct the field indicated by the message.

### **Not found Configuration file (JETCTR09.CFG)**

This indicates that a CFG file could not be found in the project directory. Normally, when a new project is created using the CTRSET\_S icon, JETCTR09.CFG will be copied to the project directory. Create a new project to restore the CFG file.

### **Can't Open JETCTR09S.JPX.**

This message is output when the project file (JETCTR09S.JPX) required by PARTNER-CTR/S could not be found in the project directory.

### **Not found hardware config-file (JET\_CTR09.HWF).**

This message is displayed when the hardware definition file (JET\_CTR09.HWF) could not be found in the same directory as the WJETCTR09S.EXE executable that was run. If this occurs, try reinstalling the PARTNER-CTR software.

### **Hardware configuration error.**

If this message is displayed, the hardware definition file (JET\_CTR09.HWF) might be corrupted.

If this message is displayed repeatedly, there might be a problem with your PARTNER-CTR hardware or the power supply.

**Hardware trouble. Please check DIPSW,CABLE,CONNECTOR and etc.**

If this message is displayed, try power cycling the PARTNER-CTR. If this message is displayed repeatedly, there might be a problem with your PARTNER-CTR hardware or the power supply. Contact support team.

## 6. Specification

### 6.1. Product Specification

Product name	PARTNER-CTR Debugger	PARTNER-CTR Capture	PARTER-CTR Capture Debugger
Slot	Game card slot x 1 / SD card slot x 1		
Video output	-	Digital: DVI x 2 Analog: NTSC x 1	
Host interface	USB2.0		USB2.0 x 2
Power source	DC12V		
Dimensions(Main unit)	Width 91.8mm x Depth 247.0mm x Height 165.3mm (Excluding projections)		
Dimensions(Controller)	Width 135mm x Depth 100mm x Height 20mm (Max) when folded		
Weight(Main unit)	2000g	2110g	2240g
Weight(Controller)	200g		
Usage environment (Main unit, controller)	Temperature 5 – 35 degrees C, Humidity 85% RH or below (no condensation)		
Cable length	100cm		
Applicable standards	FCC PART15 SUBPART B CLASS A FCC PART15 SUBPART C ICES-003 CLASS A EN301489-1 / EN301489-17 / ETSIEN300328 EN55022 / EN55024 / EN61000-3-2 / EN61000-3-3 EN60950-1 AS/NZS CISPR22 CLASS A		

Table 1 PARTNER-CTR product specification



# PARTNER-CTR Setup Manual

Second Edition, Issued in September 2010



Kyoto Microcomputer Co., Ltd.