

MobiFren GBH-S300 User Manual

GBH-S300

New Concept of Stereo Bluetooth Headset
GBH-S300
Stereo Bluetooth headset & MP3 player & Portable Disc
All in One!!!

* High sound quality

DSP tuning technology created by MobiFren's specialized DSP tuning technology.
Eliminating noise and echo by built-in DSP chip.
Optimizing the call condition and music sound quality.



* Multi point

Pairing up to 8 devices and can use 2 devices simultaneously.

New concept of stereo Bluetooth headset with MP3 player

* Proximity Auto Pairing

Automatic pairing system within 10cm to the device at proximity auto pairing mode.

* Portable Disc * Voice Prompts

* Ultra Power Save Mode

* Firmware upgrade



* Features

- Talk time : max. 6 hours
- Music play time : External device - max. 6 hours
- Standby time : max. 280 hours
- Standby time : max. 280 hours
- Ultra Power Save Mode : Up to one year
- Weight : about 11.5g
- Size : 65 X 18.5 X 9.2 mm
- Bluetooth specification : Version 2.1 + EDR



8 800221 530118

MADE IN KOREA



MobiSolution Co., Ltd. <http://www.mobifren.com>
648-16, Gajopyeong-Dong, Gumi-City, Gyeongbuk, KOREA
TEL : +82-54-474-2220 FAX : +82-54-474-2251
ISO 9001 Quality Management System Certified Company

MobiFren GBH-S300 User Manual Contents

• Components	
• Safety Instruction	
1 About your MobiFren GBH-S300	6
2 Features	7
3 Specifications	7
4 Getting started with your MobiFren	8
- Charging your MobiFren	
- Pairing your MobiFren with mobile phone	
- Changing mode	
- Turning your headset on and off	
- Using your MobiFren headset	
Mode change, Call, MP3, Ultra Power save mode, Multi point, etc.	
5 What does LED color mean?	14
6 Voice Prompts	14
7 Troubleshooting & FAQ	15
8 Handle MobiFren with care	15
9 Certification and safety approvals	16
10 Glossary	16
11 Warranty	17

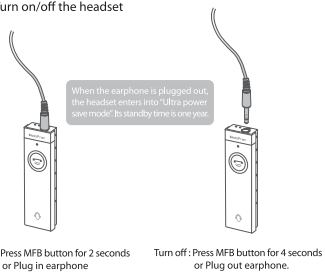
Premium HI-FI Stereo created by MobiFren's specialized DSP tuning technology.

Necklace or Clip style of Bluetooth stereo headset
Thank you for choosing MobiFren GBH-S300.
It is high quality stereo Bluetooth headset,
designed to provide you convenient and easy
way of using your mobile phone.
This instruction manual will get you started!

1

2

Fig.1 Turn on/off the headset



3

Fig.2 Changing mode (only at Standby mode)

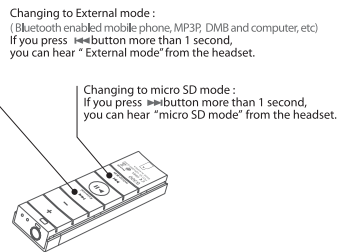
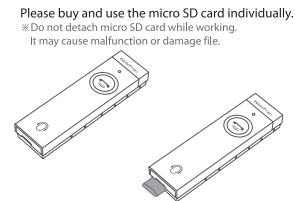
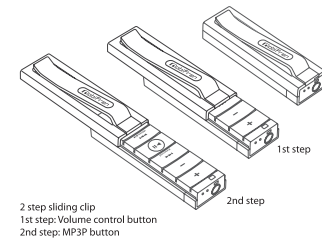


Fig.3 How to use micro SD



*MobiFren is not liable to any loss or recovery for the data and files in micro SD card.
*We recommend you to back up the important data all the time.

Fig.4 Detachable clip



4

Fig.5 Portable Disc / Charging
Connecting to PC USB



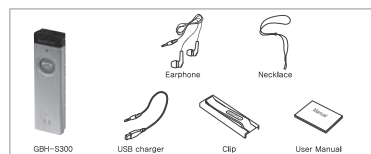
* It can be used as a charger and portable disc by connecting to PC by USB cable. (Portable disc will not be activated if you connect to PC by USB cable while you press MFB button.)

Fig.6 Clip-on / Necklace Style



5

Headset & Accessories



* The drawings and examples in manual are for better understanding to this product, so, it may be different from the real good.
Accessories and design can be changed without prior notice.

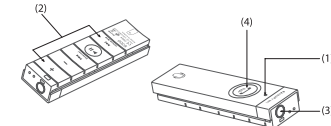
Safety Instruction

Road safety at all times
Using your mobile phone while driving can distract you and increase the possibility of an accident.
Do not use mobile phones while driving : Always drive safely and follow local laws.

1. About your MobiFren GBH-S300

- LED Light**
 - Blue indicates operating mode (connected, active or standby)
 - Red indicates battery condition (low level or charging status)
- Button**
 - MP3 mode
 - ▶ || : Play / Pause/ Stop
While playing music, if you press >|| button shortly for 3 times, the music returns to the first song. (only at micro SD mode)
 - ▶▶ : Next song (short press) / FF (long press)
While playing music ▶▶ button shortly for 2 times, the music moves to 10x forward. (only at micro SD mode)
 - ◀▶ : Previous song (short press) / RW (long press)
While playing music ◀▶ button shortly for 2 times, the music moves to 10x backward. (only at micro SD mode)
 - Volume up
- Volume down

- Talk mode
 - Volume up
 - Volume down
- (3) 3.50, 4 pole jack : Jack for earphone, charging and firmware upgrade
(4) Multi Function Button(MFB)
- Press to turn the headset on : Give MFB long press.
(Blue flash burst indicates success)
- Press and hold to turn headset off : Give MFB long press.
(Purple LED glitters and LED turns off.)
- Press to answer or end a call



6

2. Features

- Mode Changing
- Multi Point
- Ultra power save mode
- Answering a call
- Ending a call
- Rejecting a call
- Voice dialing
- Last number redialing
- Waiting a call
- Put calls on hold
- Control transmitting sound level
- Convert to call
- Play music
- Select previous song / next song
- Next song FF / Previous song RW
- Volume Control

* Functions of this product depend on your mobile phone's features. Check your mobile's user manual for further information.

7

3. Specification

- Play time : External device – Max. 6 hours
micro SD – Max. 10 hours
- Talk time : Max. 6 hours
- Standby time : Max. 200 hours
- Standby time at ultra power save mode : up to 1 year
- Battery charging time : 1 hour 30minutes.
- Battery for charging with PC USB
- Size : 65 × 16.5 × 9.2mm
- Weight : 11.5g
- Operating range : within 10M
- Support profiles : Headset Profile, Handsfree Profile, A2DP Profile, (Advanced Audio Distribution Profile) AVRCP Profile (Audio / Video Remote Control)

- Bluetooth specification : Version 2.1 + EDR (Please refer to glossary, page 16)

※ Playing and talk time may be different, depending on the devices or connecting conditions.

4. Getting started with your Mobifren

Mobifren GBH-S300 is very easy to use.

- **Charging your Mobifren GBH-S300**
Make sure that your Mobifren GBH-S300 is fully charged before you use it. Charge with USB charger, supplied together with GBH-S300.
- * The LED shows 'RED' during charging and will turn 'BLUE' when fully charged. While using USB hub, charging may not work well, due to low current.

- **Pairing your Mobifren with mobile phone :**
Before you use your Mobifren GBH-S300, you need to pair it with your mobile phone.

1. Set pairing mode in GBH-S300

- < Proximity Auto Pairing >
It's easy pairing way for the users. If you locate the device to the headset within 10cm, then, it pairs automatically.



* Some mobile phones may not support to this feature.

1-1) <Pairing on first purchasing : Initial pairing mode >

- If you press MFB button for 2 seconds after purchasing and turn on GBH-S300, it enters into Proximity Auto Pairing mode. The blue and red LED glitters alternately at 5-second intervals. Then, you can pair the headset to the device.

1-2) <Pairing again or pairing to other device>

- If you press MFB button for around 6 seconds at the status power-off, the headset is power-on. Then, the headset enters into Proximity Auto Pairing mode that you can pair the headset to the device, which the blue and red LED glitters alternately at 5-second intervals.

2) Proximity Auto pairing is effective within 45 seconds, and if the mobile phone request Pin code, press "0000".

- But, if the device fails Proximity Auto Pairing within 45 seconds, it changes to manual pairing. In this case, please pair it according to Manual pairing.

3) If the pairing is successful, the headset GBH-S300 changes to standby mode.

- ※ And, at the status of Proximity Auto Pairing, if you press MFB for 1 second, you can change it to manual pairing mode at any time. The blue LED is continuously on.

8

(Manual pairing)

[Going directly to manual pairing mode]

If you press MFB button for around 6 seconds at the status power-off, the headset is power-on. Then, the headset enters into Proximity Auto Pairing mode which the blue and red LED glitters alternately at 5-second intervals. At this time, if you press MFB button for 1 second, the headset enters into manual pairing mode which the blue LED is continuously on.

- 1) If you fail proximity auto pairing, or if you press MFB for 1 second at the Proximity Auto pairing, then, the headset enters into manual pairing. You can hear "Pairing mode" from the headset. The blue LED is continuously on.

- 2) Process the below "2. Now, Please prepare "Pairing mode" in your mobile", and search for Bluetooth devices according to its User manual instruction, and select GBH-S300 from the searched devices.

※ If you do not pair to mobile phone within 3 minutes, the headset will be out of pairing mode.

9

2. Now, please prepare "Pairing mode" in your mobile phone.

(in case of the headset is manual pairing mode.)



Pairing may be different from mobile models. Please refer to your mobile phone's manual.

- 1) Turn Bluetooth on your mobile phone and search for Bluetooth devices according to its User Manual Instructions. This usually involves going to 'Setup' menu, 'connect' or 'Bluetooth' menu on your phone and select 'find' or 'add' a new Bluetooth device. (Please refer to your Mobile manual)
- 2) Select the headset (it will appear as "Mobifren GBH-S300") from the searched devices.
- 3) Enter passkey (PIN) 0000 to pair the headset with your mobile phone. * Some mobile phones do not need to enter pin code.
- 4) When you enter pin code, blue light of the headset glitters 5 times, and the mobile phone shows that the headset is paired with mobile phone.
- 5) Your Mobifren is now ready to use. (Blue light glitters every 3 second.)
- 6) Depending on mobile phone, the pairing procedure may be different. (Please refer to your mobile's user manual for further information)

- Using as MP3 Player

GBH-S300 can be used as a MP3 Player

- 1) Insert micro SD card and press MFB button or plug the earphone into the headset to power on.
- 2) Like as Fig. 2, press micro SD button for 1 second, and change the mode. You can hear "micro SD mode" from the headset. The blue LED glitters 2 time every 3 second, then, it changes to micro SD mode.
- 3) Refer to page 12,13 and enjoy the music.

- Turning your headset on and off : (Fig. 1. Turn on/off the headset)

- To turn on your headset, press and hold the MFB for around 2 seconds, or plug the earphone into the headset. Then, the power is on and 'Blue' blinks on LED. On first purchasing, the headset enters pairing mode automatically when the power is on.
- To turn off your headset, press and hold the MFB for around 4 seconds or plug out the earphone. It enters into "Ultra power save mode". * Then, 'Red' blinks on LED and power is off.

< Setting Multi point >

Please pair the headset to the devices as you want to pair for multi point, according to the pairing procedure. (Refer to page. 8 and 9)

- To use multi point
- a. At the status of connecting two devices, if there's incoming call, press MFB to answer a call.
- b. At the status of connecting two mobile phones, if you press MFB, then, you can give a call to the number that was called recently.

3. Ultra power save mode

- Setting : When the earphone is plugged out, the headset enters into "Ultra power save mode". The standby time is one year.

- Releasing : When the earphone is plugged in, " Ultra power save mode " is released, and power is on.

4. Answering a call

- When receiving a call, you can answer the call by pressing MFB.

- While listening music, you can answer the call by pressing MFB. If the call is finished, the music plays again.

- While using headset during call, if you detach the earphone from the headset, the call converts to the mobile phone.

11

- While using mobile phone during call, if you plug in the earphone to the headset, the call converts to the headset.

5. Ending a call
- Press the MFB shortly to end a call
6. Making a call
- If you press "Send" button in mobile, some mobile will be connected to headset automatically, depending on mobile models or setting status.
- If the mobile does not support the above, then, after you press the number in mobile, give MFB button a long press.
7. Rejecting a call
- To reject an incoming call, give the MFB button a long press till the phone bell stops.
- Depending on your phone settings, the person who calls you may be forwarded to your voice-mail service or sent a busy signal.
8. Converting a call
- During call by mobile phone, if you press MFB button, the call converts to headset.
(To convert to mobile phone again, please follow your own phone menu.)
9. Voice Dialing
- Press the MFB shortly for 2 times, if your mobile phone supports this voice dialing feature. For best results, record the voice-dialing through your

headset. It depends on your mobile models. Please review your phone's user manual for more information about using this feature.

10. Redialing last number
- Give the MFB a long press for about 1 second, then, you can redial the last number.

- In some mobile phones, give the MFB a long press for about 1 second, then the last number will be shown in your mobile. Then, press the MFB one more time. (It may be different from mobile phone models.)

11. Adjusting Volume
- With (+) / (-) button, you can control the volume of receiving voice and music.
12. Shut off transmitting sound
- While talking, if you press (+) or (-) button for about 1 second, the transmitting sounds will be blocked.
- While transmitting sound is blocked, it will be released if you press (+) or (-) button for about 1 second.

13. Waiting a call and put a call on hold
- This feature allows you to put a call on hold during conversation and answer a waiting call.
- Give the MFB a long press (press approximately 1 second) to put an active call on hold and answer a waiting call.
- Give the MFB a long press to switch between two calls.
- Just press MFB shortly to end a call.

14. Controlling the microphone volume level

- On purchasing, the mic volume level is set in the middle from the 5 levels.
- Don't adjust too high or too low, not to cause sound quality poor.
- How to adjust
 - If you press (+) button for about 6 seconds, it increases one step higher, and if you do it again, it increases another one step.
 - If you press (-) button for about 6 seconds, it decreases one step lower, and if you do it again, it decreases another one step.

* LED status at controlling microphone sound level	
Two levels up	Blue LED blinks two times
One level up	Blue LED blinks one time
First setting	Purple LED blinks two times
One level down	Red LED blinks one time
Two levels down	Red LED blinks two times

15. Play MP3 (External Mode / micro SD mode)

- * To enjoy the best audio quality, please set 70 ~ 80 % from the max volume in your device.
- On first purchasing, the volume level is set in the middle (8 level) of all 15 levels. (Please adjust volume by (+)/(-) button in GBH-S300.)

12

- Button details for MP3 Play

- ▶▶ (short press) : Next song
- ▶▶▶ (long press) : Stop
- ▶▶▶▶ (long press) : FF
- ▶▶▶▶▶ (short press) : Previous song
- ▶▶▶▶▶▶ (long press) : RW
- ▶▶▶▶▶▶▶ (long press) : RW



16. Change music mode while playing MP3

- While listening music, if you press volume (+) button for about 4 seconds, the music mode will be changed to Default mode → 3D effect mode → Cinema mode.

- While listening music, if you press volume (-) button for about 4 seconds, the music mode will be changed to Cinema mode → 3D effect mode → Default mode.

- If you power off and power on again, the music starts from Normal (default) mode.

* The cinema mode works only at External mode.

* Cinema mode : You can enjoy the three-dimensional rich and high quality sound, especially when you enjoy movies in mobile phone or portable TV.

17. Back to first song in MP3 play (only at micro SD mode)

- While playing music, if you press >>> button shortly for 3 times, it goes to the first song in your SD card.

13

18. Forward / Backward 10x (only at micro SD mode)

- While playing music, if you press >>>> button shortly for 2 times, the music moves back to previous 10x song.

- While playing music, if you press <<<<< button shortly for 2 times, the music forwards to 10x song.

19. Sectional repeat (only at micro SD mode)

- **Setting starting point :** While playing music, press >>>> button shortly for 2 times where you want to start.

- **Setting ending point :** While playing music, press >>>> button shortly for 2 times when you want to end. Then, you can listen the designated section repeatedly. To finish the sectional repeat, press >>>> button shortly.

20. Add to My favorite 20 (only at micro SD mode)

- While playing music, press >>>> button and + button at the same time. Then, you can add this file to "My favorite". If you want delete the file from "My favorite", press >>>> button and (-) button at the same time while playing music. After selecting files, press >>>> button to play music. When you store or delete new files in micro SD card, "My favorite" mode will be disabled. If you want to listen all lists in micro SD card, press >>>> button.

21. Headset Initialization
- If you press Vol (+) ▶ Vol (-) ▶ Vol (+) ▶ Vol (-) shortly in order, then, press MFB button till the red LED glitters for 2 times. Then, you can initialize GBH-S300.

22. Connecting to the paired devices

- Auto connection : When you power on the headset, it connects to the device automatically which was connected to the latest. (Only handsfree profile)
- Simple connection : If it is already paired, but is not connected, just press MFB button to connect HFP(Handsfree), and press >>>> button for A2DP (MP3 player) in mobile phone at External mode.

23. Firmware upgrade

- If there are upgraded or modified features, the users can download firmware easily. (If you want to download firmware, please connect the headset to the computer when pressing >>>> button. Update is available only at www.mobifren.com)

5. What does LED color mean?

Status	LED indication
Active on a call Standby (External mode)	Blinks blue light every 8 second
micro SD mode	Blinks blue light every 3 second
battery is running low	Blinks red light
Charging	Red light ON
Fully charged	Blue light ON
Pairing mode	Blue light ON

6. Voice Prompts

Functions	Voice Prompts
Proximity Auto Pairing	Proximity pairing
Manual Pairing	Pairing mode
Play	Play
Stop	Stop
Mic volume 2 step up	two step higher
1 step up	One step higher
Default	Default
1 step Down	One Step below
2 step Down	Two Step below
MUSIC	
Default mode	Default
3D mode	3D Effect Mode
Cinema mode	Cinema Mode
External mode	External Mode
MP3 mode	Micro SD Mode

When you press play button if there's no micro SD card in GBH-S300, or no music in micro SD card : micro SD Card Error





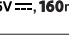
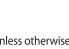
14

7. Troubleshooting & FAQ

- *1 Hear crackling noises
For the best audio quality, always wear your headset on the same side as your mobile phone.
- *2 I cannot hear anything
"Increase the volume on the headset."
"Make sure it's headset mode or not." (Refer to page. 3, 10. "Mode changing")
"Ensure that the headset is paired with the phone."
"Make sure that the phone is connected to the headset."
If the headset fails to connect either when you pressed MFB or through your mobile phone's Bluetooth menu, follow the pairing procedure.
- *3 I have problems with pairing even though my phone indicates otherwise.
Please delete the headset paired in your mobile and pair the headset again. Please refer to set up "Pairing mode", Page 8 and 9.
- *4 Will the MobiFren GBH-S300 work with other Bluetooth equipment?
The MobiFren GBH-S300 is designed to work with Bluetooth mobile, computer or portable audio devices which are built in. It can also work with other Bluetooth devices that are compliant with Bluetooth version 1.1/ 1.2/ 2.0/2.1-EDR and that support HSP, HFP, A2DP and AVRCP.
- *5 When you use the headset in the car, the handsfree can be affected by the internal noise.
- *6 The headset GBH-S300 can not read micro SD.
Make sure that the micro SD card was "Formatted".

15

8. Handle MobiFren with care

-  • Always store the MobiFren GBH-S300 with the power off and protect safely when it's not in use.
-  • Avoid storage at extreme temperature. (above 60°C / 140°F - including direct sunlight - or below -20°C/ -4°F) This can affect the MobiFren's battery life and may be the cause of malfunction. High temperature may also degrade performance.
-  • Do not expose the MobiFren GBH-S300 to rain or other liquids.
-  • Prevent children or pets to bite or suck this headset.
-  • Please do not disassemble at user's option.
-  • Please make sure to use certified charger. (Rated Voltage : 5V, 160mA)

5V $\bar{\text{---}}$, 160mA

9. Certification and safety approvals

FC UZCGBH-S300

This device complies with part 15 of the FCC Rules. Operation is subject to the following two conditions: This device may not cause harmful interference, and This device must accept any interference received, including interference that may cause undesired operation.

Made in Korea

CE 0984 5V $\bar{\text{---}}$, 160mA

In accordance with the R & TTE Directive 1999 / 5 / EC of 09. March 1999



10. Glossary

- 1) Bluetooth is a radio technology that connects devices, such as mobile phones and headsets, without wires or cords over a short distance (approximately 30 feet) Get more information at www.bluetooth.com
- 2) Bluetooth profiles are the different ways in which Bluetooth devices communicate with
HSP : Headset Profile
HFP : Hands Free Profile
A2DP / Advanced Audio Distribution Profile) : Stereo Profile
AVRCP (Audio / Video Remote Control Profile) : Remote Control Profile
- 3) Pairing of devices create a unique and encrypted link between two Bluetooth devices and let them communicate with each other. Bluetooth devices will not work if the devices are not paired.
- 4) Passkey or PIN is a code in numbers, which you have to enter on your mobile phone to pair it with your MobiFren GBH-S300. This makes your phone and the MobiFren GBH-S300 to recognize each other and automatically work together.
- 5) 'Standby Mode' is when the MobiFren GBH-S300 is passively waiting for a call. When you end a call on your mobile phone, the headset goes into standby mode.

16

11. Warranty

The conditions and our responsibilities under this warranty are as follows :

- The warranty is limited to the original purchaser.
- A copy of your receipt or other proof of purchase is required.
- The warranty is void if the serial number, date code label or product label is removed, or if the product has been subject to physical abuse, improper installation, modification, or repair by unauthorized third parties.
- The responsibility of MobiFren (MobiSolution) products shall be limited to the repair or replacement of the product at its sole discretion.
- Any implied warranty on MobiFren (MobiSolution) products is limited to one year from purchase on all parts, including any cord and connector.
- Specifically exempt from any warranty are limited-life consumable components subject to normal wear and tear, such as microphone windscreens, ear cushions, decorative finishes, batteries, and other accessories.
- MobiFren (MobiSolution) is not liable for any incidental or consequential damages arising from the use or misuse of any MobiFren (MobiSolution) product.
- This warranty gives you specific rights and you may have other rights which vary from area to area.

17

- Unless otherwise instructed in the User Manual, the user may not, under any circumstances, attempt to perform service, adjustments or repairs on this unit, whether in or out of warranty. It must be returned to the purchase point, factory or authorized service agency for all such work.
- MobiFren (MobiSolution) will not take any responsibility for any loss or damage incurred in shipping. Any repair work on MobiFren (MobiSolution) products by unauthorized third parties voids any warranty.

NOTE: This equipment has been tested and found to comply with the limits for a Class B digital device, pursuant to part 15 of the FCC Rules. These limits are designed to provide reasonable protection against harmful interference in a residential installation. This equipment generates, uses and can radiate radio frequency energy and, if not in-stalled and used in accordance with the instructions, may cause harmful interference to radio communications. However, there is no guarantee that interference will not occur in a particular installation. If this equipment does cause harmful interference to radio or television reception, which can be determined by turning the equipment off and on, the user is encouraged to try to correct the interference by one or more of the following measures:

- Reorient or relocate the receiving antenna.
- Increase the separation between the equipment and receiver.
- Connect the equipment into an outlet on a circuit different from that to which the receiver is connected.
- Consult the dealer or an experienced radio/TV technician for help.

CAUTION : Changes or modifications not expressly approved by the manufacturer responsible for compliance could void the user's authority to operate the equipment.

18