

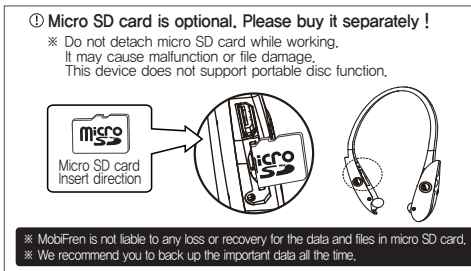
6. Using External Mode

- ※ To enjoy the best audio quality, please set 70~80% from the max volume in your device.
- On first purchasing, the volume sets in the middle (level 8) of all 15 levels. (Please adjust with \oplus/\ominus button)
- Button details for playing music
 - Play / Pause : Press \odot button shortly
 - Stop : Give a \odot button long press
 - Volume up : Press \oplus button shortly
 - Volume down : Press \ominus button shortly
 - Next song : Give a \oplus button long press
 - Previous song : Give a \ominus button long press

7. Using Micro SD mode

- ※ Play MP3 files with Micro SD
- Mode changing
 - To change mode between External mode (ex, mobile phone) and Micro SD mode, press (MFB) button and Volume (\oplus or \ominus) simultaneously.
- Button details for playing music
 - Play/Pause : Press \odot button shortly
 - Stop : Give a \odot button long press for about 2 seconds
(To release folder mode, you need to press stop button or it will be released when you receive a call.)
 - Random play : Press \odot button shortly for 2 times.
To play in order, press \odot button shortly for 2 times
 - Forward 10x track : Press \oplus button shortly for 2 times
 - Backward 10x track : Press \ominus button shortly for 2 times.

Fig. Micro SD Usage



8. Use speaker mode

- You can listen music or call with built in speaker
 - ※ For clear call quality, only the right sided speaker works when you call in speaker mode.
- To use Speaker Mode, press **(MFB)** button for more than 1 second.
If you press it again for more than 1 second, it converts to headset mode.

9. Changing EQ

- While playing music, if you press **(◀)** button and **(▶)** or **(⊖)** button at the same time for 1 second, the EQ will be changed in order.
(EQ is not available at speaker mode)
- MSTs™ Tuning technology together with lossless compression codec apt-X enables you to enjoy not only MobiFren sound but similar sound of various kinds of famous high end earphones and you can select it as your preference.
Now you will enjoy the music with the optimum sound quality like as CD in wireless.
 - **MOBIFREN Mode (Normal)** : MobiFren Sound
 - **K Mode** : for those who like AKG K3003 tune
 - **I Mode** : for those who like Sennheiser IE800 tune
 - **X Mode** : for those who like Sony MDR EX1000 tune
 - **S Mode** : for those who like Shure SE355 tune
- Customized EQ mode via Firmware Upgrade
GT Telecom supplies customized EQ mode, in addition to the above EQ mode.
It's for those who like bass. It will be supplied Bass boost and Ultra bass boost mode instead of X and S mode.
 - ※ Please visit our website for upgrade.

10. Anti phone loss mode

- If your mobile phone is out of some ranges from the headset, the headset alarms you with vibration for 1 minute to prevent phone loss.
- During alarm, press any button of **(MFB)**/**(▶)**/**(▶)**/**(⊖)** to stop vibration.

11. Using Android application

- ※ For more convenient and easy use of the headset, please download "MobiFren_S7" at Google play store.
- TTS caller ID
If you press **(▶)** or **(⊖)** button for 1 second when there's incoming call, you can listen the caller's name via mobile phone speaker.

- Message TTS
Please activate it at Setting menu of the application.
Then, it reads once you get message.
- Mobi Health
You can control Start/Stop and check walking steps, consumption calorie and walking distance with application like as pedometer.
(It recognizes steps, after you walk 7 steps at least.)
- SOS Mode (Urgent message)
Press **(MFB)** button shortly for 3 times to send SOS message.
You can request help to the pre-registered contact points (max. 3 people).
- Find my mobile
If you can not remember well where you placed your mobile phone, press **(MFB)** button and **(MFB)** button at the same time for about 1 second to find out your mobile phone. Then, the mobile phone will ring.
- Hot call (Urgent call)
Register one frequent call number and press Volume **(+)** button shortly for 2 times.
- Last Call (Direct call to the latest number)
Press **(-)** button for 2 times to use Last call.
The headset vibrates and it connects to call for the latest number.
- Camera Remote control
Press **(MFB)** button shortly to take a picture after run application.
It help you to take a picture more easily.
※ It needs additional camera application.
Please install it after searching MobiFren at Google play store.

5. What does LED color mean?

Status	LED indication
Active on a call	Blinks blue light every 8 second
Standby	LED OFF (If press button, blue LED blinks for 5 times)
Battery is running low	Blinks red light
Charging	Red light ON
Fully charged	Blue light ON
Pairing mode	Blue light ON

6. FAQ & Troubleshooting

*** I hear crackling noises**

- For the best audio quality, always locate your headset close to mobile phone.

*** I cannot hear anything**

- Increase the volume on the headset.
- Ensure that the headset is paired with the phone.
- Make sure that the phone is connected to the headset.
- If the headset fails to connect either when you pressed MFB or through your mobile phone's Bluetooth menu, follow the pairing procedure in Page 8.

*** I have problems with pairing even though my phone indicates otherwise.**

- Please delete the headset paired in your mobile and pair the headset again.
Please refer to set up "Pairing mode" in Page 8.

*** Will the MobiFren GBH-S700/S710 work with other Bluetooth equipment?**

- The MobiFren GBH-S500/S710 is designed to work with Bluetooth mobile, computer or portable audio devices which are built in. It can also work with other Bluetooth devices that are compliant with Bluetooth version 1.1/ 1.2/ 2.0/2.1+EDR/3.0/4.0 and that support HSP, HFP, A2DP and AVRCP.

*** Is the enclosed charging cable for only specified device?**

- It's compatible with all standardized micro usb charger, and in general, compatible with Android mobile phone charger.

*** When you use the headset in the car, the handsfree can be affected by the internal noise.**

7. Handle MobiFren with care

OFF

- Always store the MobiFren GBH-S700/S710 with the power off and protect safely when it's not in use.



- Avoid storage at extreme temperature, (above 60°C/140°F— including direct sunlight —or below -20°C /-4°F)
This can affect the MobiFren's battery life and may be the cause of malfunction.
High temperature may also degrade performance.



- Do not expose the MobiFren GBH-S700/S710 to rain or other liquids



- Prevent baby, children or pets to bite or suck this headset



- Please do not disassemble at user's option.

5V, 180mA

- Please make sure to use certified charger.
(Rated Voltage : 5V)

8. Certification and safety approvals

FCC ID : UZCGBH-S700

NOTE: This equipment has been tested and found to comply with the limits for a Class B digital device, pursuant to part 15 of the FCC Rules.

These limits are designed to provide reasonable protection against harmful interference in a residential installation.

This equipment generates, uses and can radiate radio frequency energy and, if not installed and used in accordance with the instructions, may cause harmful interference to radio communications.

However, there is no guarantee that interference will not occur in a particular installation. If this equipment does cause harmful interference to radio or television reception, which can be determined by turning the equipment off and on, the user is encouraged to try to correct the interference by one or more of the following measures:

- Reorient or relocate the receiving antenna.
- Increase the separation between the equipment and receiver.
- Connect the equipment into an outlet on a circuit different from that to which the receiver is connected.
- Consult the dealer or an experienced radio/TV technician for help.

CAUTION : Changes or modifications not expressly approved by the manufacturer responsible for compliance could void the user's authority to operate the equipment.

Made in Korea

In accordance with the R & TTE Directive 1999 / 5 / EC of 09. March 1999

9. Specifications

• Model	GBH-S700/S710
• Talk time (Earphone)	About 12 hrs
• Talk time (Speaker)	About 9 hrs
• Music play time (Earphone)	About 12 hrs
• Music play time (Speaker)	About 5 hrs
• Music play time at Micro SD mode (Earphone)	About 13 hrs
• Music play time at Micro SD mode (Speaker)	About 5 hrs
• Standby time	About 400 hrs
• Standby time at Mobi Health	About 160 hrs
• Charging time	About 1hr 30mins
• Size	160mm (W) x 162mm (L) x 14.5mm (T)
• Battery	Rechargeable Lithium Polymer
• Weight	About 43 g
• Operation range	Within 10m
• Supporting Bluetooth profile	Headset profile
	Handsfree profile
	A2DP
	AVRCP
	SPP
• Bluetooth Version	Ver. 4.0

※ Operation time may be variable, depending on connected device or setting status.

10. Warranty

※ The conditions and our responsibilities under this warranty are as follows :

- The warranty is limited to the original purchaser.
- A copy of your receipt or other proof of purchase is required.
- The warranty is void if the serial number, date code label or product label is removed, or if the product has been subject to physical abuse, improper installation, modification, or repair by unauthorized third parties.
- The responsibility of MobiFren products shall be limited to the repair or replacement of the product at its sole discretion.
- Any implied warranty on MobiFren products is limited to one year from the date of purchase on all parts, including any cord and connector. But, battery warranty is limited to 6 months.
- Specifically exempt from any warranty are limited-life consumable components subject to normal wear and tear, such as microphone windscreens, ear cushions, decorative finishes, batteries, and other accessories.
- MobiFren is not liable for any incidental or consequential damages arising from the use or misuse of any MobiFren product.
- This warranty gives you specific rights and you may have other rights which vary from area to area.
- Unless otherwise instructed in the User Manual, the user may not, under any circumstances, attempt to perform service, adjustments or repairs on this unit, whether in or out of warranty. It must be returned to the purchase point, factory or authorized service agency for all such work.
- MobiFren will not take any responsibility for any loss or damage incurred in shipping. Any repair work on MobiFren products by unauthorized third parties voids any warranty.

*"Contribute to our communities
with good technology and good product"*

: This device complies with part 15 of the FCC Rules.

Operation is subject to the following two conditions:

(1) This device may not cause harmful interference, and

(2) This device must accept any interference received, including interference that may cause undesired operation.

Caution: Any changes or modifications to the equipment not expressly approved by the party responsible for compliance could void user's authority to operate the equipment.

NobiFren





GT Telecom Co., Ltd.

848-16, Gupyeong-Dong, Gumi-City, Gyeongbuk, KOREA
TEL : 82-54-474-2220 FAX : 82-54-474-2251

ISO 9001 Quality Management System Certified Company



MSIP-CRM-GTT-GBH-S700



UZCGBH-S700

CE 0678 3.7V = , 180mA



MADE IN KOREA



For more easier use, please download GBH-S700/S710 manual
and Android application with the below QR codes.



Headset
Manual



안드로이드



Google play



Application