

Safety

In order to ensure the phone is used safely and correctly, please read the precautions below carefully before use.

1.1 General precaution

- Your phone is only suitable for the battery and charger approved by our company or else it may cause the battery to leak, overheat, explode or even catch fire.

- Do not knock, vibrate or throw the phone heavily to avoid malfunction, fire, overheating, explosion or fire.

- If there are abnormal phenomena, like temperature rising, color change or distortion during the usage, charging or storage of the battery, please stop using it and replace it with a new battery.

- It may burn the skin if liquid in the battery leaks onto skin or clothes. If this happens please flush with plenty of clean water immediately and go to a hospital at once.

- Please keep the battery away from fire to avoid fire and explosion if the battery leaks or emits a strange smell.

- Do not place exposed the battery to moisture or it may cause overheating, fumes and corrosion.

- Do not use or place the battery under direct sunlight, or in hot places or, it may cause leakage and overheating, thus reducing performance and shortening the lifespan.

- Do not charge the battery for over 24 hours continuously.

- Use careful with the earphone maybe possible excessive sound pressure from earphones and headphones can cause hearing loss

1.2 Precaution for the use of charger

- Do not cause short circuit to the charger, or it may cause electric shock, fumes and damage to the charger.

- Do not use the charger if the power wire is broken, or it may cause fire and electric shock.

- Please remove accumulated dust on the power plug.

- Do not put water containers next to the power supply to avoid overheating, fire, electric shock and malfunction in case they come into contact.

- Do not disassemble or tamper with the charger or it may cause personal injury, electric shock, fire and the damage of the charger.

- Do not use the charger in places of high humidity, like bathrooms, or it may cause electric shock, fire and damage of charger.

- Do not touch the charger, power cord or power plug with wet hands or it can cause electric shock.

- Do not put heavy objects on the power cord or change the power cord or it may cause electric shock and fire.

- Please unplug the power socket before cleaning and maintenance.

- Please hold the charger to unplug the socket as pulling the power cord may damage the power wire and cause electric shock and fire.

1.3 Cleaning and maintenance

- As the phone, battery and charger are not waterproof, do not use them in places of high humidity and avoid them being wet by rain.

- Please clean the battery and charger with a soft dry cloth.

- Never use alcohol, thinner or solutions, like benzene, to wipe the phone.
- Dirty sockets can cause poor contact and power down, and even make recharging unavailable. So, please clean them periodically.

1.4 Common Precaution

Mobile Phone:

- Please use the phone in an environment with temperature between -10°C- 40°C and humidity of $\leq 75\%$.

- Please use the phone far away from regular telephones, TV sets, radio sets and office automation equipment, to avoid affecting the normal use of these equipments and mobile phone.

Battery:

- Store the battery in cool and ventilated place without direct sunlight.

- The battery has a limited lifespan. The usage of battery will be shortened progressively due to frequent charging. Once the battery is out of use, it means that its lifespan has ended, and you will need to replace it with an approved new battery.

- Do not dispose of old batteries as household waste. Give them to specified disposal places and follow any stipulated instructions for disposal. CAUTION : RISK OF EXPLOSION IF BATTERY IS REPLACED BY AN INCORRECT TYPE. DISPOSE OF USED BATTERIES ACCORDING TO THE INSTRUCTIONS.

Charger:

- Do not charge under following conditions:

- places with direct sunlight

- places with ambient temperature less than -10°C or over 40°C, wet or dusty places with strong vibrations (it may cause malfunction);

- places near electrical appliances (it may affect the image and sound) like TV set, radio, etc.

- Adapter shall be installed near the equipment and shall be easily accessible. The plug considered as disconnect device of adapter

Environmentally friendly disposal

Old electrical appliances must not be disposed of together with the residual waste, but have to be disposed of separately. The disposal at the communal collecting point via private persons is for free. The owner of old appliances is responsible to bring the appliances to these collecting points or to similar collection points. With this little personal effort, you contribute to recycle valuable raw materials and the treatment of toxic substances.



Getting to know your touch phone



Starting up the device

To install the SIM card

- Open the SIM card and Memory card rubber.

- Locate the SIM card slot, and then insert the SIM card with its gold contacts facing up.

Note: The phone support one SIM card. The card will support 4G card, 3G card and 2G card. If you need to use 4G/3G operation, please insert a 4G/3G card in the card slot

To install a memory card

- Open the SIM card and Memory card rubber.

- Locate the Memory card slot, and then insert the Memory card with its gold contacts facing up.

Charging the Battery

New batteries are shipped partially charged. Before you start using your device, it is recommended that you install and charge the battery. Some batteries perform best after several full charge/discharge cycles.

Note: Only the AC adapter and USB sync cable provided with your device must be used to charge the device.

Connect the USB connector of the AC adapter to the sync connector on your device, and then plug in the AC adapter to an electrical outlet to start charging the battery.

As the battery is being charged while the device is on, a charging icon appears in the title bar of the Home screen. After the battery has been fully charged, a full battery icon appears in the title bar of the Home screen.

Warning:

- Do not remove the battery from the device while you are charging it using the AC or car adapter.

- As a safety precaution, the battery stops charging before it overheats.

Power on/off

To power off your phone, press & hold POWER. Or, release, the Phone options menu opens. Select 'Power off' and confirm.

To power on again, press & hold POWER.

SAR

This device complies with Part 15 of the FCC Rules. Operation is subject to the following two conditions:

(1) This device may not cause harmful interference.

(2) This device must accept any interference received, including interference that may cause undesired operation.

NOTE: Changes or modifications not expressly approved by the party responsible for compliance could void the user's authority to operate the equipment.

NOTE: This equipment has been tested and found to comply with the limits for a Class B digital device, pursuant to Part 15 of the FCC Rules. These limits are designed to provide reasonable protection against harmful interference in a residential installation. This equipment generates uses and can radiate radio frequency energy and, if not installed and used in accordance with the instructions, may cause harmful interference to radio communications. However, there is no guarantee that interference will not occur in a particular installation.

If this equipment does cause harmful interference to radio or television reception, which can be determined by turning the equipment off and on, the user is encouraged to try to correct the interference by one or more of the following measures:

- Reorient or relocate the receiving antenna.

- Increase the separation between the equipment and receiver.

- Connect the equipment into an outlet on a circuit different from that which the receiver is connected.

- Consult the dealer or an experienced radio/TV technician for help.

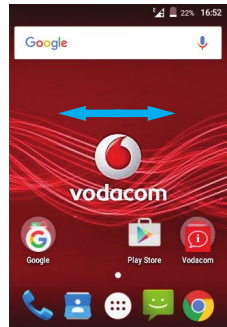
Body-worn Operation

This device was tested for typical body-worn operations. To comply with RF exposure requirements, a minimum separation distance of 1.5cm must be maintained between the user's body and the handset, including the antenna.

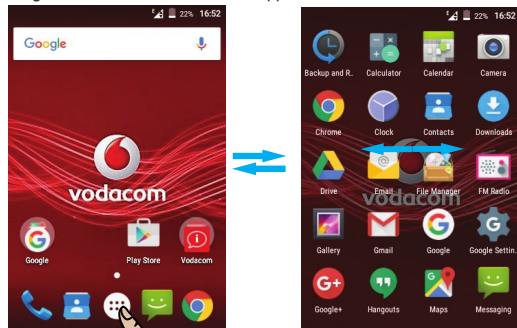
Third-party belt-clips, holsters, and similar including the antenna. Third-party belt-clips, holsters, and similar accessories used by this device should not contain any metallic components. Body-worn accessories that do not meet these requirements may not comply with RF exposure requirements and should be avoided.

1. Switch MainMenu style

(1) In default Home screen, slide your fingertip left and right along the screen to reveal the more home screen.



(2) On Home screen, click icon on the bottom of the screen (Main menu icon) to enter the main menu screen, slide your fingertip left and right along the screen to reveal the more applications.



2. Home screen

(1) Read your notifications

When you see a notification in the status bar, touch the bar and slide your finger down the screen to open the list of notifications displayed in the sliding window.

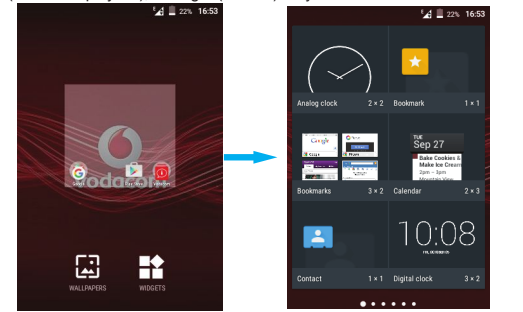
Ongoing notifications report activities such as call forwarding ON, current call status, song playing.

Notifications report the arrival of new messages, calendar events, and alarms. You can clear notifications list by selecting 'Clear' notifications at the top of the notifications window.

To open the message, reminder, or other notification, you can touch the items. To close the notifications window, slide your finger up the screen.

(2) Create Home screen shortcuts and widgets:

From the Home screen, touch and hold the blank screen, and select 'Widgets'. Enter the main menu screen, slide your fingertip left to reveal the widget, select a shortcut to some of your saved information (such as a play list), a widget (a clock) for your Home screen.



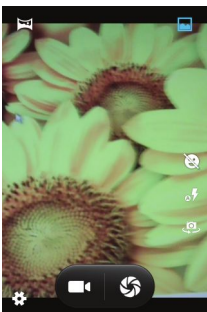
(3) Move objects on the Home screen

- To move an icon or other item on the Home screen, you must first touch & hold it to enter move mode. The object will magnify when it's ready to be moved.

- Without lifting your finger (or you'll drop out of move mode), drag the object to the new position. To move an item to a section of the Home screen not in view, move it to the edge of the screen and hold it there for a moment. The screen view will shift; position the object and release.

3. Camera

All the pictures you can capture or view on your phone are stored on a memory card, which is the phone storage or the installed SD card in your phone. Before you use the Camera or view pictures in Gallery, make sure you have a card installed.



4. GPRS/WLAN network

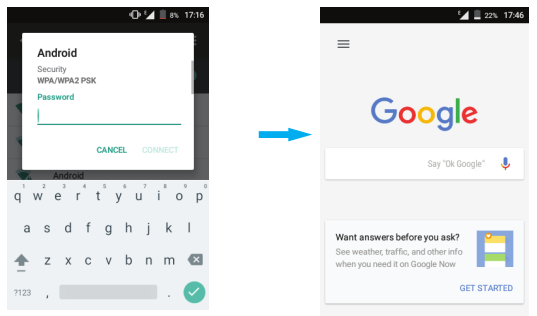
Your device's networking capabilities allow you to access the Internet or your corporate network through WLAN, GPRS, or WCDMA (if SIM card supported).

You can also add and set up a VPN or proxy connection.

To use WLAN on your device, you need access to a wireless access point or 'hotspot'.

Note: The availability and range of your device's WLAN signal depends on the number, infrastructure, and other objects through which the signal passes.

To open the Browser you need to be connected to a network.

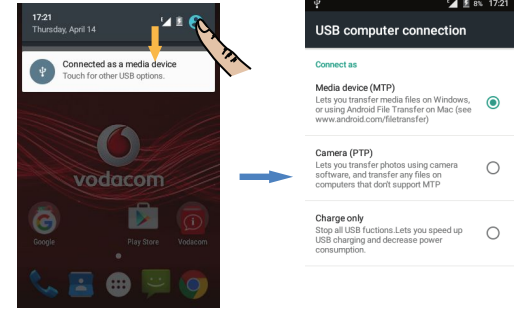


5. U-disk storage

This phone supports movable storage, i.e., the U-disk function.

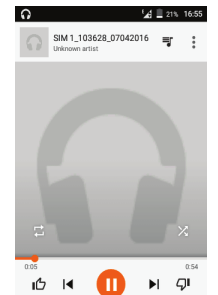
When the phone is switched on, you can see the icon in the status bar on the top of the screen when it's connected to a PC by a data line. Touch the bar and slide your finger down the screen to open the list of notifications displayed in the sliding window. Select [USB connected] and touch [Turn on USB storage] to confirm, then you can use the phone as a U-disk.

The product shall only be connected to a USB interface of version USB2.0



6. Music

Your music is organized into four categories: Artists, Albums, Songs and Playlists. Select a category to view the lists within each. Once in a category, keep selecting until you reach the music you want to play.



7. Bluetooth

The phone supports Bluetooth(BT) functions, you can establish a wireless connection between the phone with other compatible devices, and data transmission, you can establish a wireless connection between devices in the phone with a distance of up to 10 meters. Bluetooth connection may be interference by obstacles, such as walls or other electronic device.

1. Enter the setting menu. Touch the Bluetooth to open the function, idle screen will display BT icon in the status bar.

2. Open the BT discoverable, and other devices can search the phone.

3. Before using the phone as a Bluetooth device, you need to pair the phone with the target device as follows:

- Sure your phone has Bluetooth-enabled.
- Touch "Scan for devices." Bluetooth devices within the range of the phone will start scanning.

- Touch the device you want to pair, to confirm password to complete the pairing

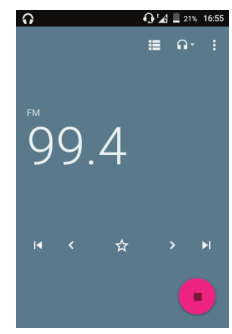
You can use Bluetooth to share the pictures, videos or music files with family and friends

8. MAPS

The phone supports GPS function and built in google maps app, maps can provide contain administrative zones and transportation, and business information of vector maps, satellite images of different resolution, and can be used to display the terrain and terrain contour view.

9. FM radio

The phone supports FM radio, but you need an earphone as antenna, please plug in earphone before searching for channels.



Technical Specification

Weight: 106g (Including battery)
Dimensions: 110.5*62.5*10.7mm
Band: GSM900MHz/DCS1800MHz/GSM850MHz/PCS1900MHz/
WCDMA900MHz/WCDMA2100MHz
Battery Type: Li-Ion
Battery Voltage: 3.7V
Battery Capacity: 1300mAh
Talk Time: about 6h
Standby Time: about 300h
Battery Time (No prior or separate notice is required for capacity changes)

Note: Actual operating conditions depend on the local network environment, SIM, and user behavior.

Warning: Any consequence caused by misuse, abuse, or not following any and all of the above-written suggestions and instructions shall not hold the producer in any way responsible to any degree.

Announcement: The manufacturer reserves the right to change or upgrade specifications or software versions without prior or separate notice. Trade marks mentioned or used in this material belong to their respective owners.



User Guide