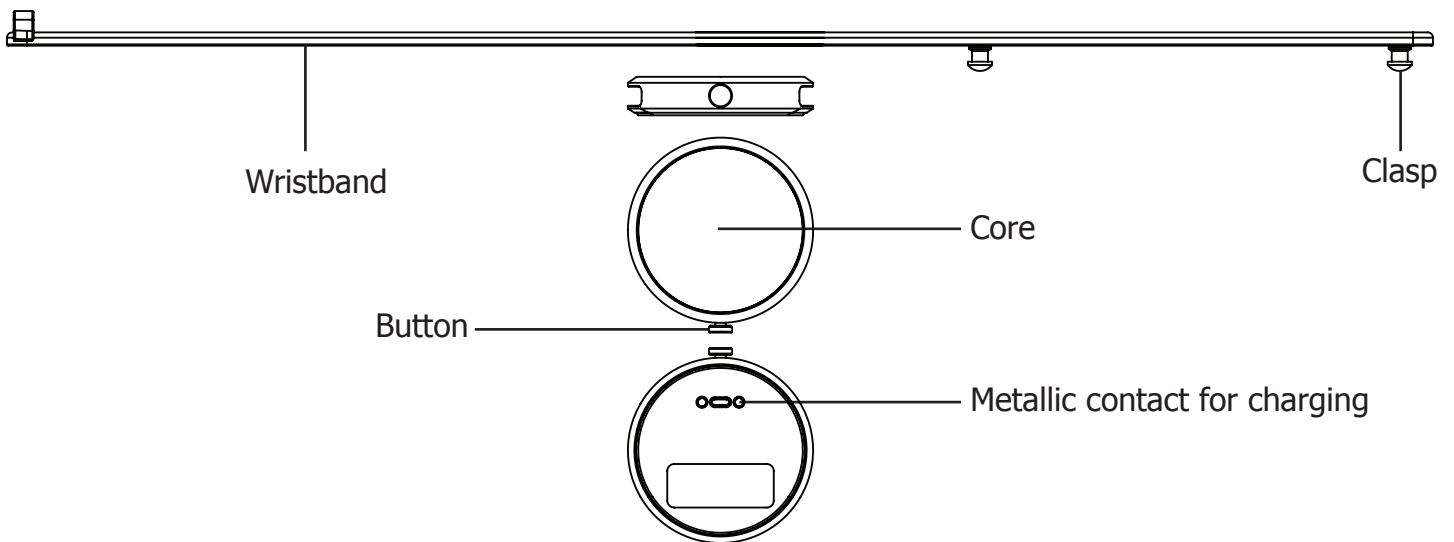


Device Overview



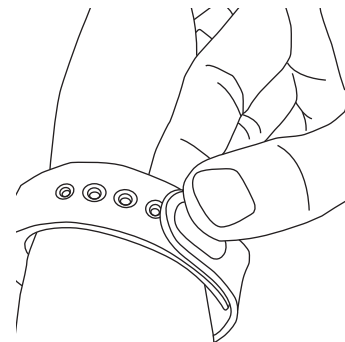
How to wear your Q-72 ?

1 Wear Q-72 on your wrist



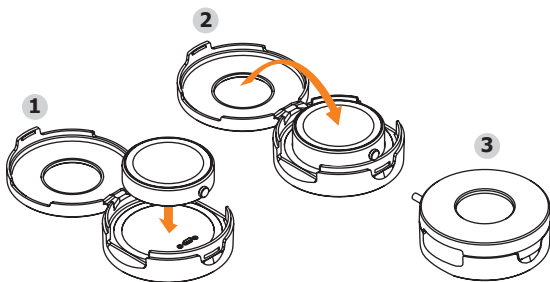
Put on the watch with the watch face facing up and wrap the band around your wrist. Align the clasp end with the holes on the band to measure the best fit on your wrist.

2 Fasten Q-72 with clasp



Fasten the clasp through the appropriate holes on the band. Try it out on your wrist for best fit and adjust accordingly.

3 Charge your Q-72



To charge your Q-72, place it in the charging box at the other end of the USB cable. Close the box afterwards, and make sure the Q-72 is securely covered. Plug the USB connector to either a PC or power adapter to start charging.

Get started with Q-72

1 Download and Install i-gotU Life app

Please download i-gotU Life app from Google Play or the App Store and have it installed on your smartphone:
<https://play.google.com/store/apps/details?id=com.mobileaction.ilife>
<http://appstore.com/igotulife>



Apk download: <http://global.mobileaction.com/download/apk>

Supported device

- Any Android smartphone (v4.3 and up) with built-in 4.0 Bluetooth connectivity; or
- iPhone 4s and later models, iPad 2 and later models, and iPod Touch (all with iOS version 7.0 and up).
- A complete list of supported smartphone or mobile devices can be found at:
<http://ww2.voiis.com/qband/devices.html>



3 Start Using Q-72

1. Switch between different function modes

1. Long-press the button on the Q-72 until you see 4 icons on the screen for mode selection.
2. Press the button to switch mode.
3. You'll be entering the selected mode in 3 seconds.

2. Change display information

Information shown on the screen will vary as you press the button on the Q-72 to toggle between screens.

3. Q-72 modes

- ⚙️ **Daily mode:** Analyzes your daily data, including steps taken and calories burned, and displays current UV index.
- 🌙 **Sleep mode:** Tracks your sleep pattern and quality.
- 🏃 **Sports mode:** Starts a workout and displays information including duration, steps taken, calories burned, UV-index and distance traveled during the workout.
- 🕒 **Nap mode:** Awakes you via vibration after a short nap.

4. Icon description

- 📶 Connection Status
- 🔋 Progress
- 🔋 Battery Status
- 🕒 UV – Index

2 Set up Q-72

Your Q-72 can be configured directly on the i-gotU Life app.

First time setup:

1. Open the i-gotU Life app.
2. A **Setup Wizard** will be launched automatically.
3. Follow the on-screen instructions to proceed with more settings.

Set up a new device from Settings:

1. Open the i-gotU Life app.
2. Tap the app icon at the upper left corner to open **function menu**.
3. Choose **Settings**.
4. Tap **Setup New Device** under **MORE DEVICE SETTINGS**.
5. Follow the on-screen instructions to continue.

Note

Your personal information is used to calculate your Base Metabolic Rate (BMR), which determines your calories burned.

4 Features of Q-72 & i-gotU Life App

Silent Alarm

Silent Alarm awakes you using gentle vibrations of the Q-72. You can dismiss the alarm by long-pressing the button on the Q-72. In case you miss the alarm, Q-72 will alert you again in 5 minutes. Alarms can be set up from: **i-gotU Life App Menu -> Silent Alarm**.

Notification

You will be notified with incoming calls, SMS, E-Mail, or alerts from the social apps via vibration. When notified about an incoming call on an Android smartphone, you may reject the call by long-pressing the button on Q-72. Notification can be set up from: **i-gotU Life App Menu -> Notification**.

Remote Display (Android only)

1. Please download **i-gotU Sports** app from Google Play and have it installed on your Android smartphone:
<https://play.google.com/store/apps/details?id=com.mobileaction.isports>
<http://global.mobileaction.com/download/apk>
2. After starting an activity on **i-gotU Sports** app, selected sports data from i-gotU Life app will be displayed on Q-72.
3. Remote Display can be set up from: **i-gotU Life App Menu ->Remote Display**.
4. The screen can be rotated by changing the settings from: **i-gotU Life App Menu ->Settings -> MORE DEVICE SETTINGS -> Screen Rotation**.



Online Help

Android: <http://ww2.voiis.com/igotu-life/help.html?language=en>
 iOS: <http://ww2.voiis.com/igotu-life/help.html?language=en&platform=ios>

Important Notice

1. Please make sure your Q-72 is fully charged when used for the first time. It takes about 2 hours before it is fully charged.
2. Please do not use under water.
3. Please do not use any corrosive chemical to clean the device.



WEEE

Note on environmental protection:

After the implementation of the European Directive 2002/96/EU in the national legal system, the following applies:
 Electrical and electronic devices may not be disposed of with domestic Waste. Consumers are obliged by law to return electrical and electronic devices at the end of their service lives to the public collecting points set up for this purpose or point of sale. Details to this are defined by the national law of the respective country. This symbol on the product, the instruction manual or the package indicates that a product is subject to these regulations. By recycling, reusing the materials or other forms of utilizing old devices, you are making an important contribution to protecting our environment.

Federal Communications Commission (FCC) Statement

15.21

You are cautioned that changes or modifications not expressly approved by the part responsible for compliance could void the user's authority to operate the equipment.

15.105(b)

This equipment has been tested and found to comply with the limits for a Class B digital device, pursuant to part 15 of the FCC rules. These limits are designed to provide reasonable protection against harmful interference in a residential installation. This equipment generates, uses and can radiate radio frequency energy and, if not installed and used in accordance with the instructions, may cause harmful interference to radio communications. However, there is no guarantee that interference will not occur in a particular installation. If this equipment does cause harmful interference to radio or television reception, which can be determined by turning the equipment off and on, the user is encouraged to try to correct the interference by one or more of the following measures:

- Reorient or relocate the receiving antenna.
- Increase the separation between the equipment and receiver.
- Connect the equipment into an outlet on a circuit different from that to which the receiver is connected.
- Consult the dealer or an experienced radio/TV technician for help.

**This device complies with Part 15 of the FCC Rules.
Operation is subject to the following two conditions:**

- 1) this device may not cause harmful interference and
- 2) this device must accept any interference received, including interference that may cause undesired operation of the device.

FCC RF Radiation Exposure Statement:

This equipment complies with FCC radiation exposure limits set forth for an uncontrolled environment. End users must follow the specific operating instructions for satisfying RF exposure compliance. This transmitter must not be co-located or operating in conjunction with any other antenna or transmitter.

Operating temperature	-10° to 65°C (14° to 149°F)
Charging temperature	0° to 45°C (32° to 113°F)
Power input type	DC 5V USB cable
Battery type	Rechargeable Li-Poly, 3.7 Vdc
Input	Maximum DC 5V, 0.1A