

Universal Headset



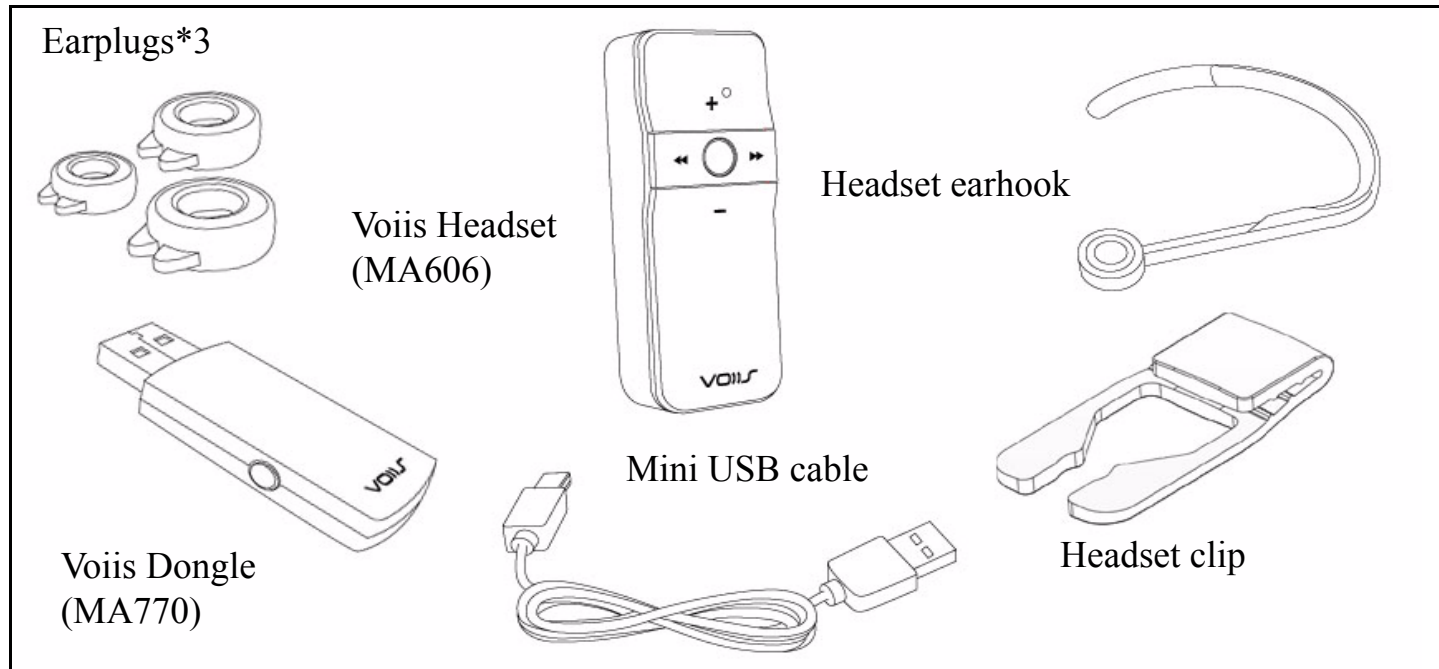
Your Voiis Headset Package

Voiis Headset lets you listen to stereo music through your Bluetooth stereo enabled mobile phone, while ensuring that you never miss a call.

The Voiis Headset (BV606) is compliant with Bluetooth v2.0 Compatible with all mobile phones that support Bluetooth headset, hands free, A2DP and AVRCP profiles. Furthermore, the Voiis Headset and Voiis Dongle (MA770) working together allow you to connect to two mobile phones and 1 PC simultaneously. You can use the Voiis Headset to listen to stereo music with remote control, make VoIP calls via Instant Messengers such as Skype, AOL, MSN, and answer/ make mobile phone calls at the same time.

Package Contents

The Voiis Headset package comes with 1 Voiis Headset, 1 Voiis Dongle, 3 different sizes of replaceable ear plugs and 2 wear appendages as illustrated below. Please contact your dealer immediately if anything is missing.

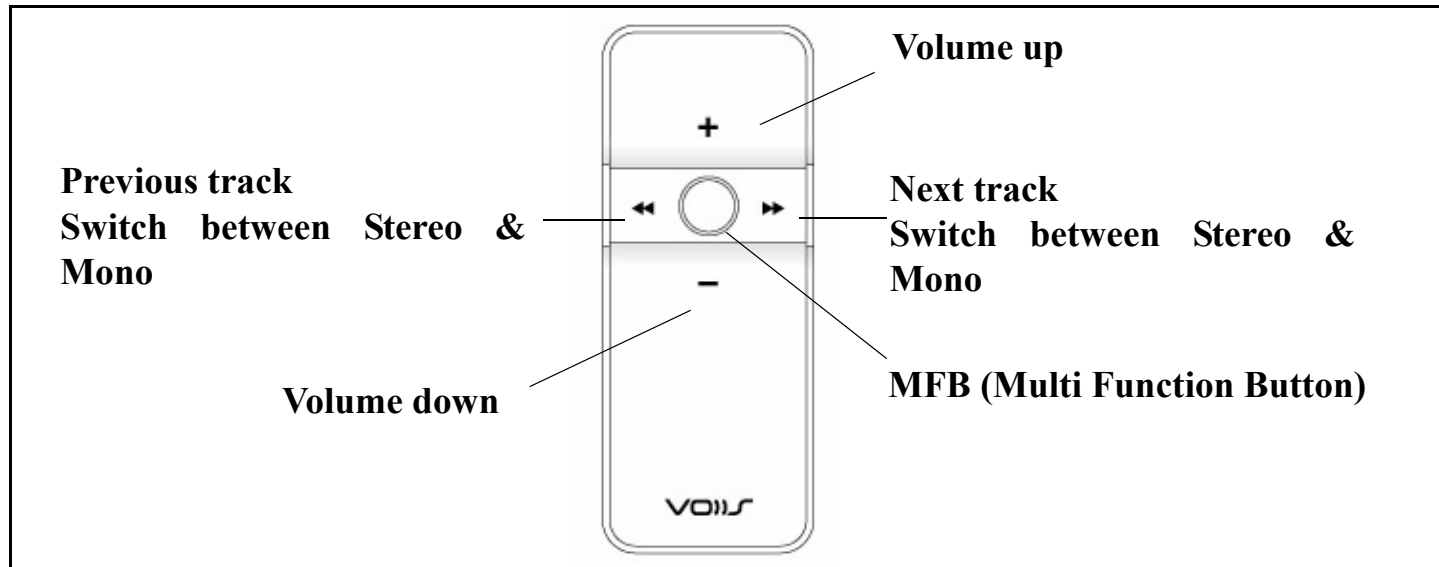


Get Prepared

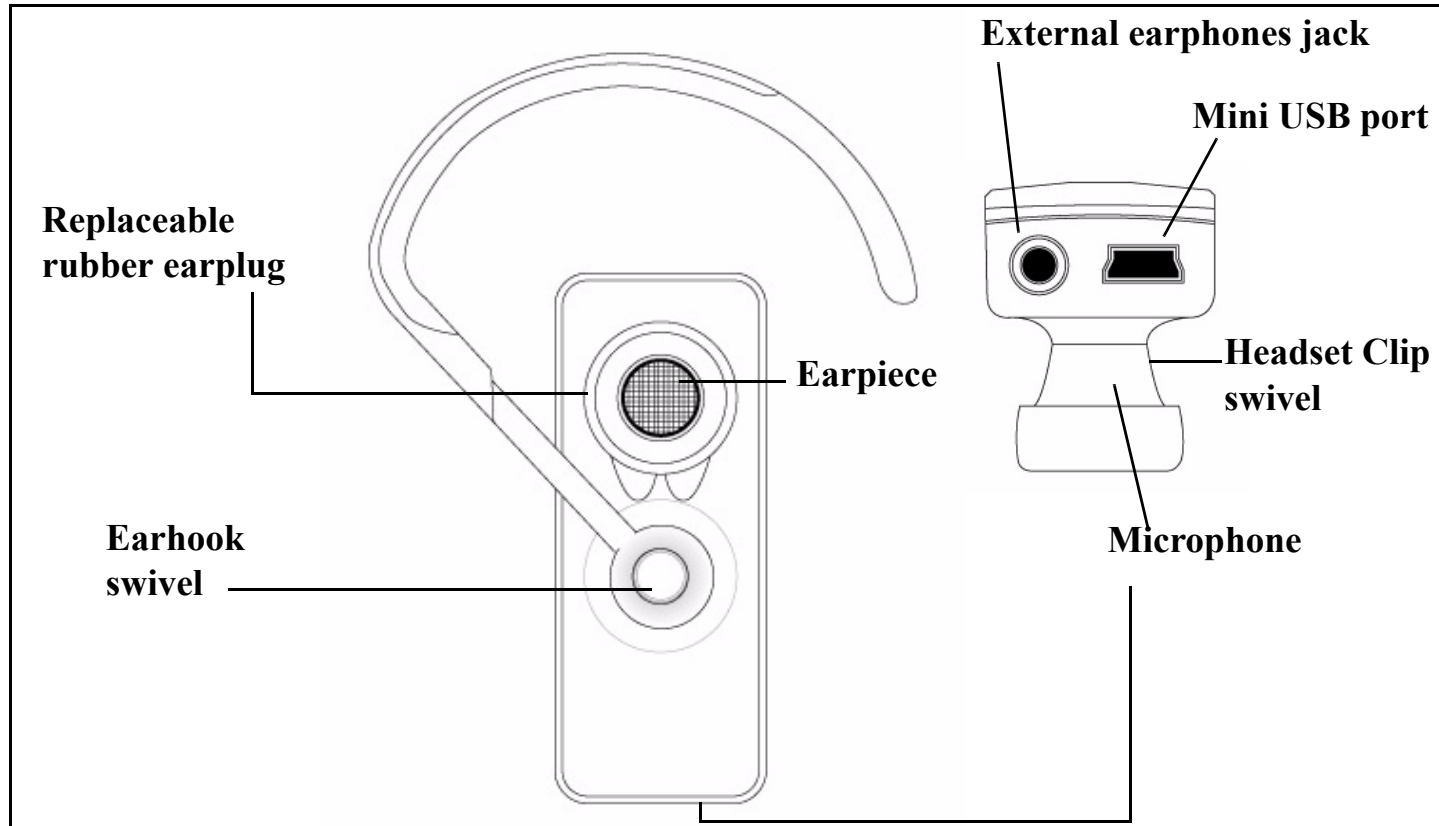
To use your Voiis Headset, please follow the steps below to get prepared.

A. Know your Voiis Headset

Front View

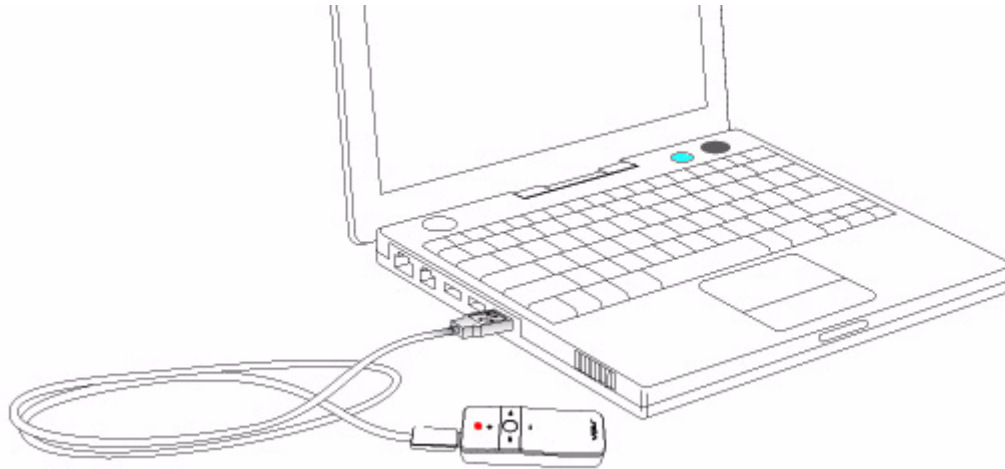


Rear & Top View



B. Charge your Voiis Headset

The Voiis Headset comes with a built-in rechargeable battery. Please use the provided mini-USB cable to charge the headset fully before using it.



Note:

1. Standard charging time is 2 hours. The red LED indicator will turn off when charging is complete. A fully charged Voiis Headset offers about 8 hours talk time & music playback time and up to 100 hours standby time.
2. Please make sure your computer is turned on when you charge the Voiis Headset.

C. Pair your Voiis Headset with Bluetooth-enabled devices.

a. Pair with a Bluetooth-enabled phone.

Please make sure the Voiis Headset is turned off before pairing.

1. Turn on the Bluetooth module of the phone.

2. Press the MFB (Multi-Function Button) to turn on the Voiis Headset.

The Voiis Headset goes into pairing mode (The red and blue LED indicators start flashing in turns.) right after it's turned on.

3. Some mobile phones require you to enter a passkey to complete the pairing. Please enter the default passkey "0000" and follow the instructions shown on your mobile phone to complete the pairing.

When pairing is complete, only the blue LED indicator remains flashing every 2 seconds.

Note: Once the Voiis Headset is paired with a mobile phone, you don't have to re-pair it next time when you use it. The Voiis Headset leaves the pairing mode once it's reconnected to a previously-paired device; therefore, turn off the power of the previously-paired devices when a new pairing is taken place.

b. Pair with a PC (both Windows & Mac compatible)

Please make sure the Voiis Headset is turned off before pairing.

1. Plug the Voiis Dongle into the USB port on the computer that you are going to pair. **The Voiis Dongle is an HID (Human Interface Device)-compatible device; therefore, no extra driver installation is needed.**

Note: The USB Sound Device appears under both **Human Interface Device** and **Sound, video and game controllers** in **Device Manager**. Please go to **My Computer -> Properties -> Hardware -> Device Manager** to make sure the installation is complete.

2. Press the MFB (Multi-Function Button) to turn on the Voiis Headset. The Voiis Headset goes into pairing mode (The red and blue LED indicators start flashing in turns) right after it's turned on.

3. Press and hold the button on the Voiis Dongle for 2 seconds to go into pairing mode (The flashes go slower when it's in pairing mode.) The pairing takes about 15 seconds to complete.

When pairing is complete, only the blue LED indicator on the Voiis Headset remains flashing every 2 seconds, and the LED indicator of the Voiis Dongle lights blue.

D. Wear your Voiis Headset - Earplug & Earhook

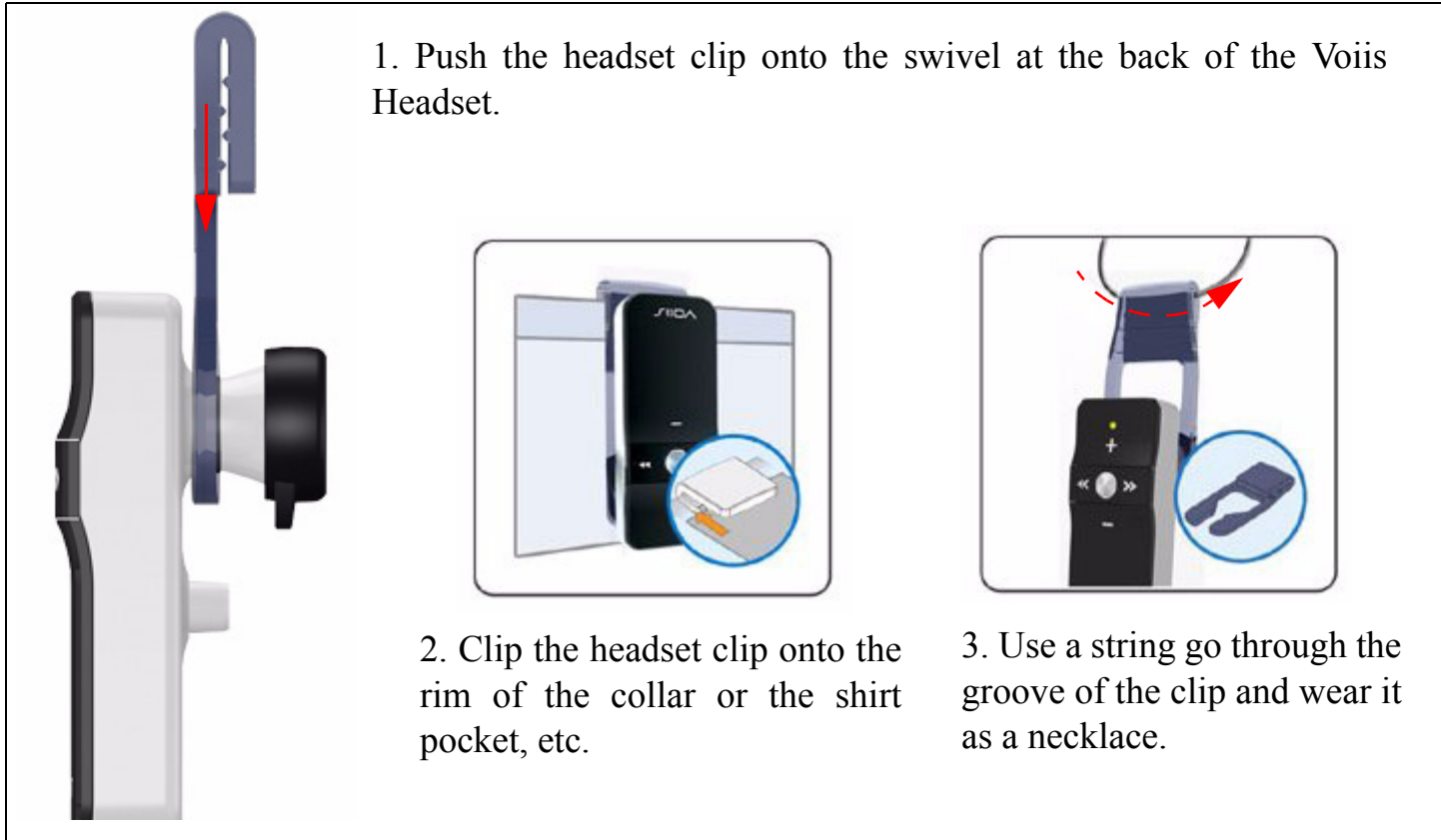


Apply the appropriate earplug that fits your ear onto the earpiece.



Seat the earhook onto the swivel and adjust it to a comfortable position.

Wear your Voiis Headset - Clip & Necklace



1. Push the headset clip onto the swivel at the back of the Voiis Headset.

2. Clip the headset clip onto the rim of the collar or the shirt pocket, etc.

3. Use a string go through the groove of the clip and wear it as a necklace.

Basic Operations and LED indicators

Please refer to the tables below for the basic operations and the information on the LED indicators.

The Voiis Headset

LED indicator status	Meaning the Voiis Headset is...
The blue LED indicator flashes every 5 seconds.	in standby mode.
The blue and red LED indicators flash in turns.	in pairing mode.
The blue and red LED indicators flash simultaneously every 2 seconds.	A2DP activated.
The blue indicator flashes every 2 seconds.	connected to the Bluetooth-enabled devices.
The red LED indicator flashes every 5 seconds.	battery low. (under 3.5 V) If detected under 3.0V upon power on, the Voiis Headset turns off automatically.
The red LED indicator flashes slowly. (breathing status)	is being charged.

MFB (Multi Function Button)

Power on: Press the MFB to power on the Voiis Headset.

Power off: Press and hold the MFB for 3 seconds to power off the Voiis Headset. The red LED indicator flashes once before the Voiis Headset is powered off.

Pair: The Voiis Headset goes into pairing mode when it's powered on. To go into the pairing mode when the Voiis Headset is powered on. Press and hold the MFB.

Reset: Press and hold the MFB for 15 seconds when the Voiis Headset is powered off. All the saved pairing devices records will be deleted after the reset.

Answer calls: Press the MFB to take a call.

End calls: Press the MFB to end a call.

Reject calls: Press the MFB for 3 seconds to reject an incoming call.

Play: Press the MFB to start playback when A2DP is activated.

Pause: Press the MFB to pause the playback during playback when A2DP is activated.

<< and >>

Next track: Press >> to go to the next track during playback.

Previous track: Press << to go to the previous track during playback.

Switch between mono and stereo: Press and hold << or >> for 3 seconds to switch between mono and stereo.

Re-connect to the previously-connected A2DP device: When Voiis Headset is no connected to the Voiis Dongle, press and hold << or >> to re-connect to the previously-connected A2DP device.

The Voiis Dongle

LED indicator status	Meaning the Voiis Dongle is...
The red LED indicator is stable on.	disconnected.
The blue and red LED indicators flash in turns.	in pairing mode.
The blue LED indicator is stable on.	is connected.
The red and blue LED indicator flashes simultaneously every 2 seconds.	A2DP activated.
The blue LED indicator flashes every 2 seconds.	is in talk mode.

Re-connect to a previously-paired device: Press the button to reconnect to a previously-paired device.

Pair: Press the button for 2 seconds to go into pairing mode.

Use Your Voiis Headset

A. Manage your calls

With paired mobile phones

Answer a call

Press the MFB to accept the call or answer the call via your mobile phone in the normal way. If a call comes in when you are listening to music, the playback will be automatically paused. When the call ends, press the MFB again to resume the playback.

Reject a call

Press the MFB for 3 seconds to reject an incoming call.

Make a call

1. Dial from Your Mobile phone

Make all your calls on your mobile phone in the normal way.

2. Dial from your Voiis Headset

Press the MFB on your headset twice to dial the last dialed number from your headset.

Note: The above functions are only applicable to the mobile phones with Bluetooth Handsfree profile. Functionality varies depending on the mobile phones. Please refer to your mobile phone user guide for more information.

Adjust Volume

Press + repeatedly to increase the volume or press - repeatedly to decrease the volume during active calls.

With a paired PC (VoIP calls)

The Voiis Headset also supports PC VoIP calls. Please follow the steps below to make VoIP calls via Skype, MSN, AOL, Google Talk, or Yahoo Messenger, etc.

Note: Please make sure the Voiis Dongle is plugged into the USB port on the PC and is paired with the Voiis Headset beforehand.

In general, to use the Instant Messengers above with your Voiis Headset, you have to select the USB Sound Device (Voiis Dongle) as the desired Audio device.

For example, if you want to talk via Skype with the Voiis headset.

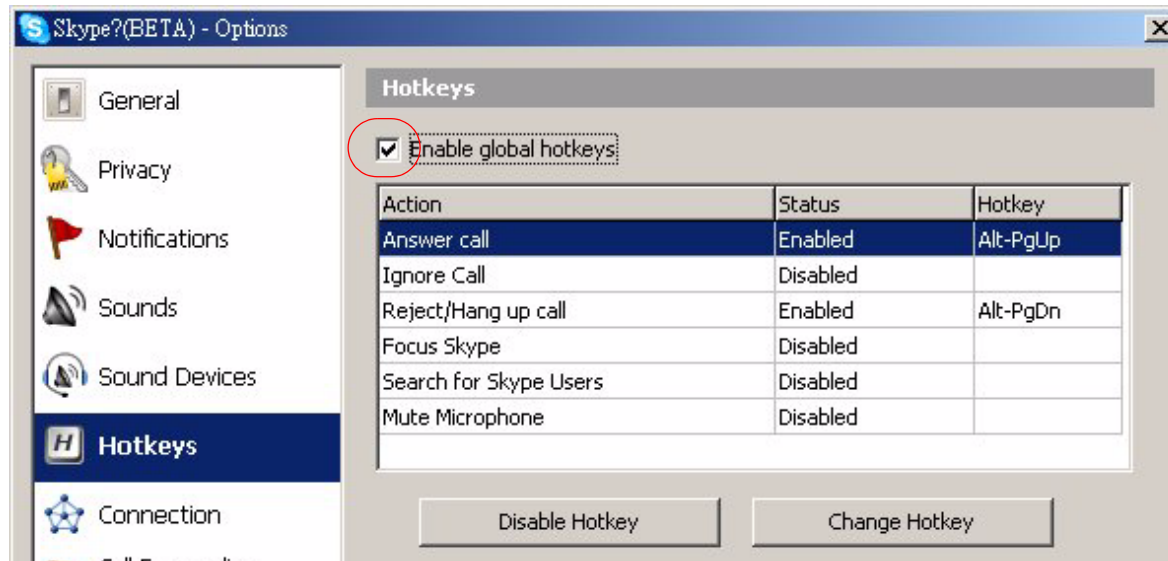
1. go to **Tools -> Options -> Sound Devices**,

2. select the USB Sound Device (Voiis Dongle) from the dropdown menu for both **Audio In** and **Audio Out** settings. Now all the sounds and voices coming from Skype go through the Voiis Headset to you, and vice versa.



Furthermore, to directly make/ take calls via your Voiis Headset, you can activate the A2DP (Advanced Audio Distribute Profile) of your Voiis Headset.

1. Please go to **Tools -> Hotkeys**.
2. Check the **Enable global hotkeys** box, as the illustration shown below.



Now you can take/ end calls and adjust volume directly from your Voiis Headset.

B. Listen to stereo music - Use the A2DP (Advanced Audio Distribute Profile) & the AVRCP (Audio/Video Remote Control Profile)

The A2DP Profile is a standard interface for stereo sound streaming. Your Voiis Headset supports not only stereo music playback but also remote control over HID-compatible applications on the paired PC.

From paired mobile phones

To activate A2DP profile, press and hold >> or << for 3 seconds until a beep sound is heard and the red and blue LED indicators start flashing simultaneously every 2 seconds.

Press the MFB to playback the music.

Press >> to go to the next track.

Press << to go to the previous track.

Press + and - to increase and decrease the playback volume.

The Voiis Headset switches to mono automatically when you take an incoming call during music playback. When the call ends, press and hold << or >> again for 3 seconds to switch back to stereo to continue the stereo playback.

From a paired PC

Note: Please make sure the Voiis Dongle is plugged into the USB port on the PC and is paired with the Voiis Headset beforehand.

To activate A2DP profile, press and hold >> or << for 3 seconds until a beep sound is heard and the red and blue LED indicators start flashing simultaneously every 2 seconds.

Furthermore, to operate the HID-compatible software, such as Windows Media Player, over the Voiis Dongle from your Voiis Headset (AVRCP), please follow the steps below to complete the settings.

Note: The AVRCP Profile is a standard interface for a single remote control (for example, the Voiis Headset), to control all the paired Bluetooth A/V equipments, such as Bluetooth mobile phones, PDAs, MP3 players and PC media Players.

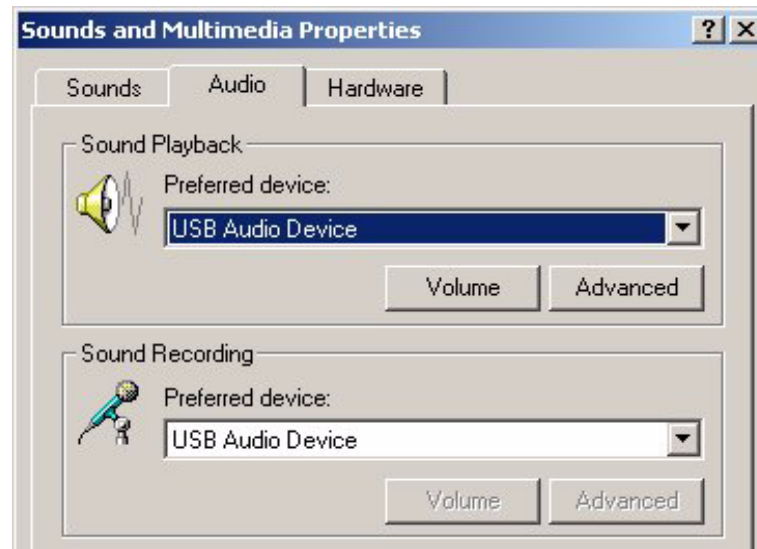
1. Go to **Windows Media Player Tools -> Options**, select **Speakers** under **Devices** tab, and click **Properties** to select **USB Sound Device** as the desired device.



2. Press << or >> to switch the Voiis Headset to the A2DP Profile first to enable the AVCRP Profile. Now you can use the Voiis Headset to remote control over Windows Media Players and perform basic operations, such as Play/ Pause, Forward/ Backward and Volume adjustments.

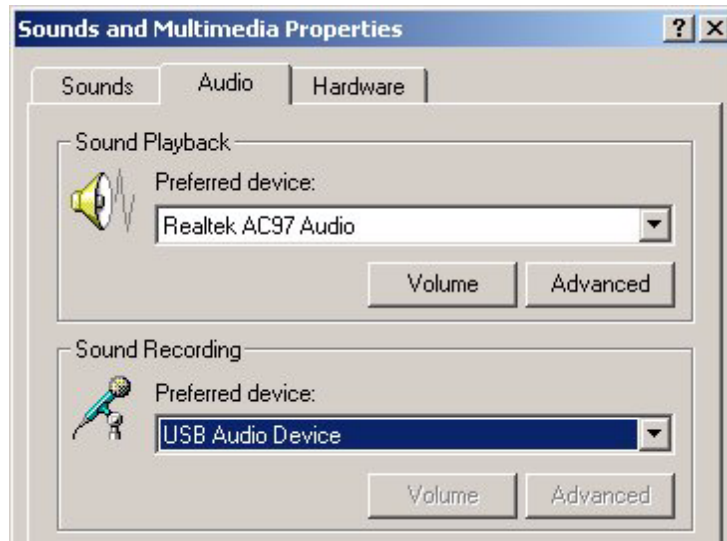
C. Advanced Setups: Manage the sounds between your PC and the Voiis Headset

When you plug the Voiis Dongle into the USB port on the PC, the PC recognizes it automatically and system sounds will reset immediately to use it as default device, as the illustration shown below.



This might cause all the sounds from the PC to come through your Voiis Headset, including all the undesired operations alerts.

To avoid this, please go to **Start -> Settings -> Control Panel -> Sounds and Multimedia**, and replace the USB Audio Device with other desired one under **Sound Playback -> Preferred device**, as the illustration shown below.



Safety information

Please follow the local laws regarding the use of mobile phones and headsets while driving.

Never allow children to play with the headset -small parts may be a choking hazard.

Observe all signs that require an electrical device or RF radio product to be switched off in designated areas, including hospitals, blasting areas, and potentially explosive environments.

Turn off your headset before boarding an aircraft.

Do not use your headset in an aircraft.

Never mount or store your headset over any air bag deployment area as serious injury may result when the air bag deploys.

No not open or mutilate the built-in battery.

Dispose of batteries according to local regulations.

Care and Maintenance

Headset

Consider turning your headset off before placing it in your pocket or bag. If the MFB is accidentally activated, your mobile phone may place an unintended call.

Do not expose the headset to liquid, moisture or humidity as it is not waterproof.

Do not use abrasive cleaning solvents to clean the headset.

Do not expose the headset to extreme temperature conditions.

The best storage temperature range is from -10 C to +60 C, or the life of the headset will be influenced.

Do not dispose of the headset in a fire as it this may result in an explosion.

Do not bring your headset into contact with sharp objects as this will cause scratches and damage.

Do not stick anything inside the headset as this may damage the internal components.

Do not attempt to disassemble the headset as it does not contain serviceable components.

If you do not use the headset for long periods, be sure to store it in a dry place, free from extreme temperature conditions and dust.

If storage over a month, please ensure the charging is in time to guarantee the functions of the battery and headset.

Built-in Battery

Do not attempt to replace the headset's battery yourself as it is built into the headset and is non-changeable.

Charge the battery in accordance with the instructions supplied with this user guide.

Troubleshooting

If you are unable to connect your headset and mobile phone, please try the following:

Ensure your headset is turned off and is properly charged.

Ensure the headset is paired with your mobile phone.

Ensure your mobile phone's Bluetooth feature is activated. Please refer to your mobile phone user guide for specific instruction.

Ensure the headset is within a 10 meter range of your mobile headset and there are no obstructions, such as walls or other electronic devices in between.

If the above steps do not solve your problem, please recharge the headset and remove your mobile phone battery for a short time.

FCC Compliance and Advisory Statement

This device complies with Part 15 of the FCC rules. Operation is subject to the following two conditions:(1) this device may not cause harmful interference, and (2) this device must accept any interference received, including interference that may cause undesired operation.

This equipment has been tested and found to comply with the limits for a Class B digital device, according to Part 15 of the FCC rules. These limits are designed to provide reasonable protection against harmful interference in a residential installation. This equipment generates, uses and can radiate radio frequency energy and if not installed and used in accordance with the instructions, may cause harmful interference to radio communications. However, there is no guarantee that interference will not occur in a particular installation. If this equipment does cause harmful interference to radio or television reception, which can be determined by turning the equipment off and on, the user is encouraged to try correct the interference by one or more of the following measures:

- 1.Reorient the receiving antenna.
- 2.Increase the separation between the equipment and receiver.
- 3.Connect the equipment into and outlet on a circuit different from that to which the receiver is connected.
- 4.Consult the dealer or an experienced radio/TV technician for help.

Any special accessories needed for compliance must be specified in the instruction manual.

Warning: A shielded-type power cord is required in order to meet FCC emission limits and also to prevent interference to the nearby radio and television reception. It is essential that only the supplied power cord be used. Use only shielded cables to connect I/O devices to this equipment.

CAUTION: Any changes or modifications not expressly approved by the party responsible for compliance could void your authority to operate the equipment.