

# BLUETOOTH USB DONGLE

## Federal Communications Commission (FCC) Statement

### RADIO FREQUENCY INTERFERENCE STATEMENT

This device complies with Part 15 of the FCC rules. Operation is subject to the following two conditions: 1) this device may not cause harmful interference, and 2) this device must accept any interference received, including interference that may cause undesired operation.

This equipment has been tested and found to comply with the limits for a Class B digital device, pursuant to Part 15 of the FCC rules. These limits are designed to provide reasonable protection against harmful interference in a residential installation. This equipment generates, uses and can radiate radio frequency energy and if not installed and used in accordance with the instructions, may cause harmful interference to radio communications. However, there is no guarantee that interference will not occur in a particular installation. If this equipment does cause harmful interference to radio or television reception, which can be determined by turning the equipment off and on, the user is encouraged to try correct the interference by one or more of the following measures:

- Reorient the receiving antenna.
- Increase the separation between the equipment and receiver.
- Connect the equipment into an outlet on a circuit different from that to which the receiver is connected.
- Consult the dealer or an experienced radio/TV technician for help.

Any special accessories needed for compliance must be specified in the instruction manual.

You are cautioned that changes or modifications not expressly approved by the party responsible for compliance could void your authority to operate this device.

The antenna(s) used for this transmitter must not be co-located or operating in conjunction with any other antenna or transmitter.

For quick and easy installation, it is strongly recommended that you install the software on the supplied CD before connecting the Bluetooth Dongle.

For more details on other operations, please refer to the electronic manual on the CD.

*Quick Guide*

## INSTALLATION

### 1. Insert USB Bluetooth Dongle Software CD

Please insert the supplied CD-ROM. The autorun screen will appear. Click **"Install Dongle Utility"** to install the USB Bluetooth Dongle software.

### 2. Welcome Screen

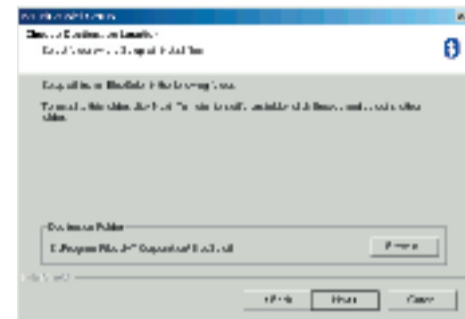
Click **"Next"** to continue.

### 3. License Agreement

Read the **"License Agreement"** carefully, click **"Yes"**.

### 4. Choose Destination Location

Click **"Next"** to continue; or click **"Browse"** and select another folder to install the software.



### 5. Installation complete

Select **"Yes, I want to restart my computer now"**, then click **"Finish"**.

- 1 -

## INITIAL SETUP

After installing the software successfully, please plug the USB Bluetooth Dongle into an available USB port.

### 1. Open BlueSoleil

Double-click the **"BlueSoleil"** icon on the desktop.



### 2. BlueSoleil Environment

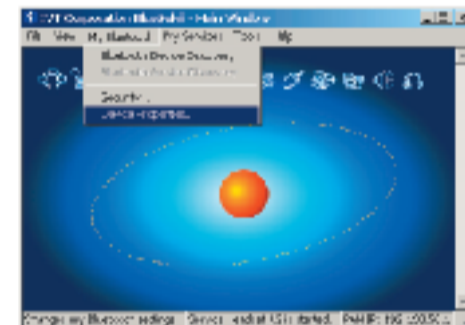
The BlueSoleil window will appear. BlueSoleil contains the following six menus:

- File Menu
- View Menu
- My Bluetooth Menu
- My Services Menu
- Tools Menu
- Help Menu

- 2 -

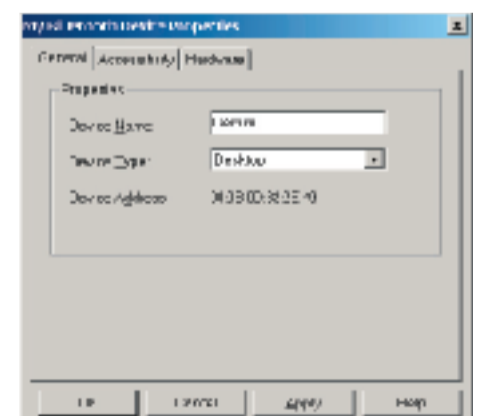
## PROPERTIES CONFIGURATION

Click **"My Bluetooth"** > **"Device Properties"**.



### General

- In **"Device Name"** field, enter a unique device name which will be shown on other bluetooth enabled devices.
- In **"Device Type"** field, select the device's type of your local computer.
- **Device Address:** The address of the local address.



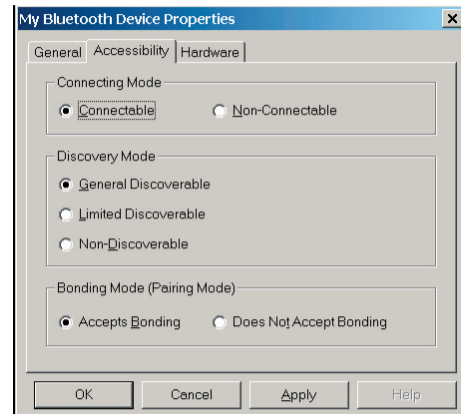
- 3 -

## SERVICE PROPERTIES

### Accessibility

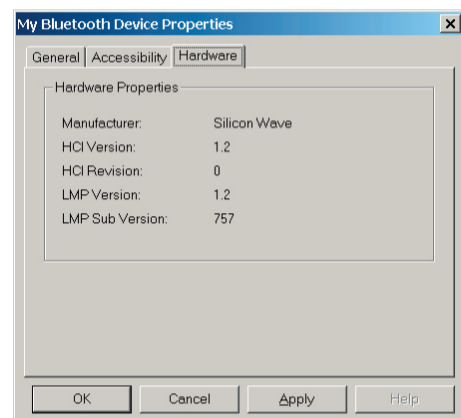
You may permit or prohibit other Bluetooth enabled devices to interact with your computer.

- **Connectable:** Permit.
- **Non-connectable:** Prohibit.



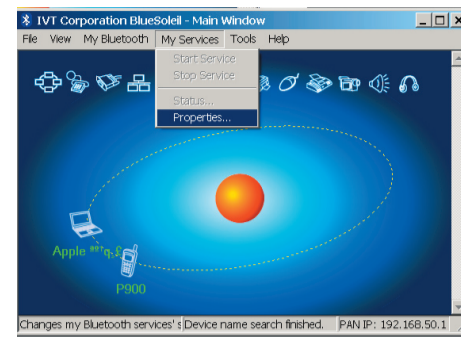
### Hardware

View information about your Bluetooth hardware.



- 4 -

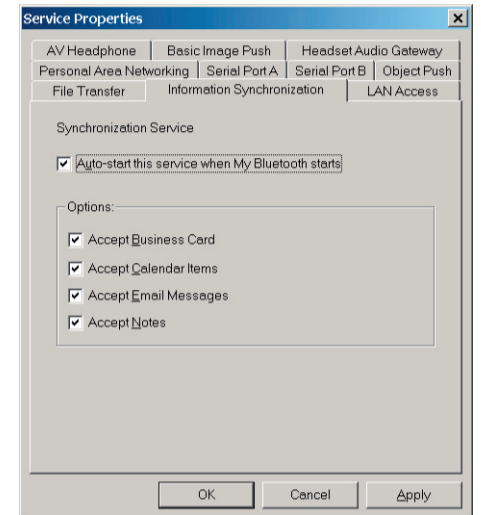
Click **"My Services"** ⇨ **"Properties"**.



### Information Synchronization

Click on the **"Information Synchronization"** tab, and enable the check box next to **"Auto-start this service when My Bluetooth starts"**.

Select the type of PIM (Personal Information Management) objects that you would like to synchronize.



- 5 -

## MY BLUETOOTH DEVICE

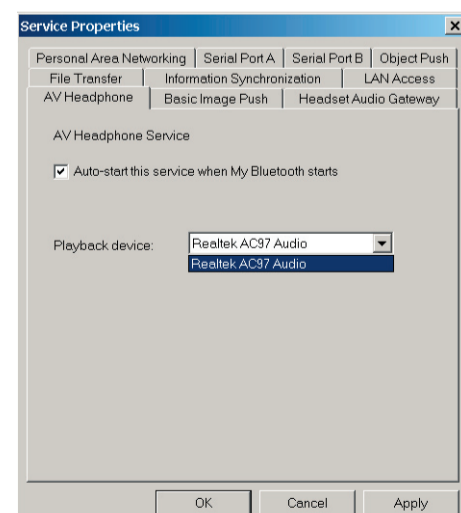
### Supported Outlook version

Operating System	Version
Windows 98SE/ME	MS Outlook 2002 (XP)
Windows 2000/XP	MS Outlook 2000, Outlook 2002 (XP), Outlook 2003

### AV Headphone

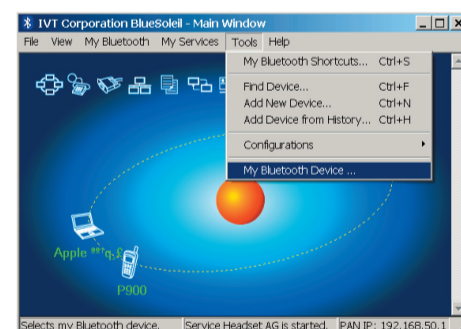
Click on the **"AV Headphone"** tab, and enable the check box next to **"Auto-start this service when My Bluetooth starts"**.

Then, select the proper item for the **"Playback device"** in the local computer.

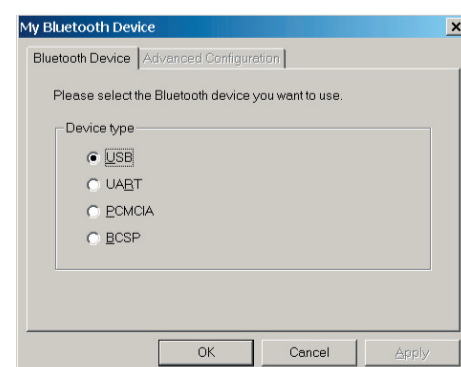


- 6 -

Click **"Tools"** ⇨ **"My Bluetooth Device"**.



In the **"Bluetooth Device"** tab, select the type of Bluetooth enabled device that you want to use. The default setting is **"USB"**. Other device type may not be supported by the bundled software.



- 7 -