



iRISPrint 1.0 Internal Installation Instructions

Rev 0

FCC Statement

WARNING! This module is to be installed only in Mobile Aspects end products by Mobile Aspects personnel, and shall not be offered to 3rd party OEM integrators or the general public.

Federal Communications Commission Interference Statement

This equipment has been tested and found to comply with the limits for a Class B digital device, pursuant to Part 15 of the FCC Rules. These limits are designed to provide reasonable protection against harmful interference in a residential installation. This equipment generates uses and can radiate radio frequency energy and, if not installed and used in accordance with the instructions, may cause harmful interference to radio communications. However, there is no guarantee that interference will not occur in a particular installation. If this equipment does cause harmful interference to radio or television reception, which can be determined by turning the equipment off and on, the user is encouraged to try to correct the interference by one of the following measures:

- Reorient or relocate the receiving antenna.
- Increase the separation between the equipment and receiver.
- Connect the equipment into an outlet on a circuit different from that to which the receiver is connected.
- Consult the dealer or an experienced radio/TV technician for help.

This device complies with Part 15 of the FCC Rules. Operation is subject to the following two conditions: (1) This device may not cause harmful interference, and (2) this device must accept any interference received, including interference that may cause undesired operation.

FCC Caution: Any changes or modifications not expressly approved by the party responsible for compliance could void the user's authority to operate this equipment.

The RF Module is labeled with its own FCC ID Number. If the FCC ID is not visible when the module is installed inside another device, then the outside of the device into which the module is installed must also display a label referring to the enclosed module. This exterior label can use wording such as the following:

Contains Transmitter Module FCC ID: R4FIRISPRINT10

or

Contains FCC ID: R4FIRISPRINT10

Table of Contents

1. INTRODUCTION.....	4
1.1 PURPOSE OF THE DOCUMENT	4
2. INSTALLATION INSTRUCTIONS.....	4
2.1 PRINTER MAIN CONTROLLER	4
2.2 PRINTER ANTENNA	5
2.3 CONSOLE TO PRINTER CONNECTION.....	6

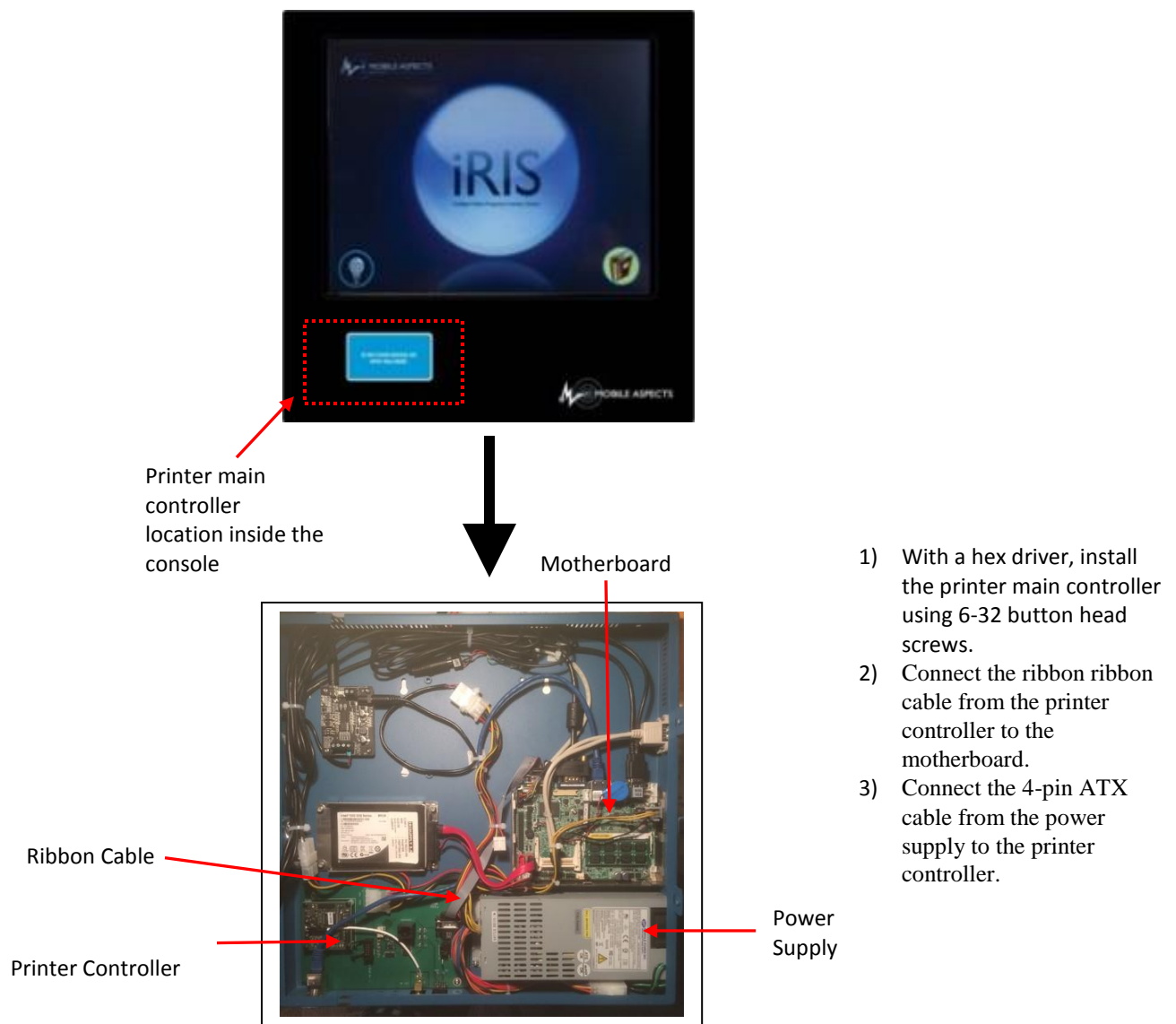
1. Introduction

1.1 Purpose of the document

The purpose of this internal document is to provide work instructions on how to install the printer main controller and printer antenna inside a console and printer.

2. Installation Instructions

2.1 Printer Main Controller



2.2 Printer Antenna

1) Install printer at this location inside the printer.



1) Attach the antenna cable at this this location in the back of the printer.



2.3 Console to Printer Connection

Connect the printer to the console as show below.

