

MobileDemand

Innovation everywhere. Productivity anywhere.



xTablet T1200 Rugged Tablet PC User's Guide

MobileDemand, LC

1501 Boyson

Square Drive

Suite 101

Hiawatha, IA

52233

U.S.A.

Phone: 877.784.4338

Fax: 319-363-4122

Web: www.RuggedTabletPC.com

No parts of this work may be reproduced in any form or by any means - graphic, electronic, or mechanical, including photocopying, recording, taping, or information storage and retrieval systems - without the written permission of the publisher.

While every precaution has been taken in the preparation of this document, the publisher and the author assume no responsibility for errors or omissions, or for damages resulting from the use of information contained in this document or from the use of programs and source code that may accompany it. In no event shall the publisher and the author be liable for any loss of profit or any other commercial damage caused or alleged to have been caused directly or indirectly by this document.

© 2009 - 2012 MobileDemand LC

Products that are referred to in this document may be either trademarks and/or registered trademarks of the respective owners. The publisher and the author make no claim to these trademarks.

MobileDemand is a registered trademark of MobileDemand, LC.

MobileDemand logos are registered trademarks of MobileDemand,

LC. Windows is a trademark of the Microsoft group of companies.

The Bluetooth word mark and logo are registered trademarks and are owned by the Bluetooth SIG, Inc.

Last Updated: 10/1/2012

Table of Contents

COPYRIGHT	5
REGULATORY STATEMENT	5
<i>Federal Communications Commission Statement</i>	5
<i>Declaration of Conformity</i>	5
<i>RF exposure warning</i>	6
<i>Canada, Industry Canada (IC) Notices</i>	6
<i>Battery Disposal</i>	7
<i>CLASS 1 LASER PRODUCT</i>	7

BEFORE YOU START 9

PACKAGE CONTENTS	9
FEATURES	10
COMPONENTS	11
<i>Front View</i>	11
<i>Bottom View</i>	<i>Error! Bookmark not defined.</i>
<i>Back View</i>	13
<i>Left View</i>	14
<i>Right View</i>	14
<i>Status Indicators</i>	15

GETTING STARTED 16

POWERING UP YOUR TABLET PC	16
<i>Connecting the AC Adapter</i>	16
<i>Using Battery Power</i>	16
INSTALLING THE BATTERIES	17
<i>Charging the Battery</i>	17
<i>Charging Time</i>	18
<i>When to replace the Battery Pack</i>	18
<i>Removing the Batteries</i>	19
STARTING YOUR TABLET PC.....	20
<i>Turning On Your Tablet PC</i>	20
<i>Changing the Display Orientation</i>	20
<i>Shutting Down Your Tablet PC</i>	20
USING THE STYLUS	21
<i>Calibrate the Screen</i>	21
USING THE MEMORY CARDS	22
<i>Inserting a Memory Card</i>	22
<i>Removing a Memory Card</i>	22
USING THE SMART CARD	23
<i>Inserting a Smart Card</i>	23
USING THE PC CARDS	24
<i>Inserting a PC Card</i>	24

MAKING CONNECTIONS	25
CONNECTING USB DEVICES	25
CONNECTING PERIPHERAL DEVICES.....	26
CONNECTING TO A LOCAL AREA NETWORK (LAN).....	27
CONNECTING HEADPHONES	28
POWER MANAGEMENT	29
USING THE POWER PLAN	29
USING THE POWER SAVING MODE	30
USING THE BIOS SETUP UTILITY.....	31
BIOS SETUP MENU	31
STARTING THE BIOS SETUP UTILITY	31
NAVIGATING AND ENTERING INFORMATION IN BIOS.....	32
MAIN MENU	33
ADVANCED MENU	33
BOOT MENU	34
SECURITY MENU	34
SAVE & EXIT MENU	35
SPECIFICATIONS	36

Copyright

Copyright© 2012. All rights reserved.

No part of this user manual may be transmitted, stored in a retrieval system, or translated into any language or computer language, in any form or by any means, without the prior written permission of the manufacturer. Information is subject to change without prior notice.

Regulatory Statement

Federal Communications Commission Statement

This equipment has been tested and found to comply with the limits for a Class B digital device, pursuant to Part 15 of the FCC Rules. These limits are designed to provide reasonable protection against harmful interference in a residential installation. This equipment generates, uses, and can radiate radio frequency energy and, if not installed and used in accordance with the instructions, may cause harmful interference to radio communications. However, there is no guarantee that interference will not occur in a particular installation. If this equipment does cause harmful interference to radio or television reception, which can be determined by turning the equipment off and on, the user is encouraged to try to correct the interference by one or more of the following measures:

- Reorient or relocate the receiving antenna.
- Increase the separation between the equipment and the receiver.
- Connect the equipment into an outlet on a circuit different from that to which the receiver is connected.
- Consult the dealer or an experienced radio/TV technician for help.

Shielded interconnect cables and shielded AC power cable must be employed with this equipment to insure compliance with the pertinent RF emission limits governing this device. Changes or modifications not expressly approved by the system's manufacturer could void the user's authority to operate the equipment.

Declaration of Conformity

This device complies with part 15 of the FCC rules. Operation is subject to the following conditions:

- This device may not cause harmful interference
- This device must accept any interference received, including interference that may cause undesired operation.

RF exposure warning

This equipment must be installed and operated in accordance with provided instructions and must not be co-located or operating in conjunction with any other antenna or transmitter. End-users and installers must be provided with antenna installation instructions and transmitter operating conditions for satisfying RF exposure compliance.

SAR Value: 0.317W/kg

This device is operation in 5.15 – 5.25GHz frequency range, then restricted in indoor use only, Outdoor operations in the 5150~5250MHz is prohibit.

This device is slave equipment, the device is not radar detection and not ad-hoc operation in the DFS band.

Canada, Industry Canada (IC) Notices

This Class B digital apparatus complies with Canadian ICES-003 and RSS-210. Operation is subject to the following two conditions: (1) this device may not cause interference, and (2) this device must accept any interference, including interference that may cause undesired operation of the device.

Radio Frequency (RF) Exposure Information

The radiated output power of the Wireless Device is below the Industry Canada (IC) radio frequency exposure limits. The Wireless Device should be used in such a manner such that the potential for human contact during normal operation is minimized.

This device has been evaluated for and shown compliant with the IC Specific Absorption Rate ("SAR") limits when installed in specific host products operated in portable exposure conditions.

Canada, avis d'Industry Canada (IC)

Cet appareil numérique de classe B est conforme aux normes canadiennes ICES-003 et RSS-210.

Son fonctionnement est soumis aux deux conditions suivantes : (1) cet appareil ne doit pas causer d'interférence et (2) cet appareil doit accepter toute interférence, notamment les interférences qui peuvent affecter son fonctionnement.

Informations concernant l'exposition aux fréquences radio (RF)

La puissance de sortie émise par l'appareil de sans fil est inférieure à la limite d'exposition aux fréquences radio d'Industry Canada (IC). Utilisez l'appareil de sans fil de façon à minimiser les contacts humains lors du fonctionnement normal.

Ce périphérique a été évalué et démontré conforme aux limites SAR (Specific Absorption Rate – Taux d'absorption spécifique) d'IC lorsqu'il est installé dans des produits hôtes particuliers qui fonctionnent dans des conditions d'exposition à des appareils portables.

Battery Disposal

THIS PRODUCT CONTAINS A LITHIUM-ION OR NICKEL-METAL HYDRIDE BATTERY. IT MUST BE DISPOSED OF PROPERLY. CONTACT LOCAL ENVIRONMENTAL AGENCIES FOR INFORMATION ON RECYCLING AND DISPOSAL PLANS IN YOUR AREA.

CLASS 1 LASER PRODUCT

LASERSCHUTZKLASSE 1 PRODUKT TO EN60825

CAUTION: THIS APPLIANCE CONTAINS A LASER SYSTEM AND IS CLASSIFIED AS A "CLASS 1 LASER PRODUCT." TO USE THIS MODEL PROPERLY, READ THE INSTRUCTION MANUAL CAREFULLY AND KEEP THIS MANUAL FOR FUTURE REFERENCE. IN CASE OF ANY TROUBLE WITH THIS MODEL, PLEASE CONTACT YOUR NEAREST "AUTHORIZED SERVICE STATION." TO PREVENT DIRECT EXPOSURE TO THE LASER BEAM, DO NOT TRY TO OPEN THIS ENCLOSURE.

ANNEX IV

Symbol for the marking of electrical and electronic equipment

The symbol indicating separate collection for electrical and electronic equipment consists of the crossed-out wheeled bin, as shown below. The symbol must be printed visibly, legibly and indelibly.



CAUTION FOR ADAPTER

THIS TABLET PC IS FOR USE WITH DEDICATED AC ADAPTER.

BATTERY SAFETY

DANGER OF EXPLOSION IF BATTERY IS INCORRECTLY REPLACED.
REPLACE ONLY WITH THE SAME OR EQUIVALENT TYPE RECOMMENDED BY THE
MANUFACTURER. DISPOSE OF USED BATTERIES ACCORDING TO THE
MANUFACTURER'S INSTRUCTIONS.

CAUTION FOR RJ-45

The RJ-45 jack is not used for telephone line connection.

Before You Start

Congratulations on your purchase of this tablet PC.

This rugged tablet PC is portable and provides users with maximum mobile computing experience in a wide range of working environments. Before you begin using your tablet PC, read this chapter to familiarize yourself with the main components installed in the system.

Package Contents

If any of following items is damaged, please contact your retailer.



T1200 Tablet PC



Power adapter



Power cord



Stylus Pen

Hand-strap

Back Strap



NOTE

- The pictures are for reference only, actual items may slightly differ.

Features

- Intel "Ivy Bridge" 3rd Generation i-Core Series CPU
- Rugged feature: 5 feet drop and dust/waterproof IP 65
- 10.4" XGA LCD with Multi-touch function
- Two battery packs support 9~10 hrs battery life and hot swapping
- Support LTE and 3G WWAN USB Modules via add on enclosure
- Optional barcode scanner (support 1D/2D barcode reading)
- Optional Integrated GPS

Components

Front View

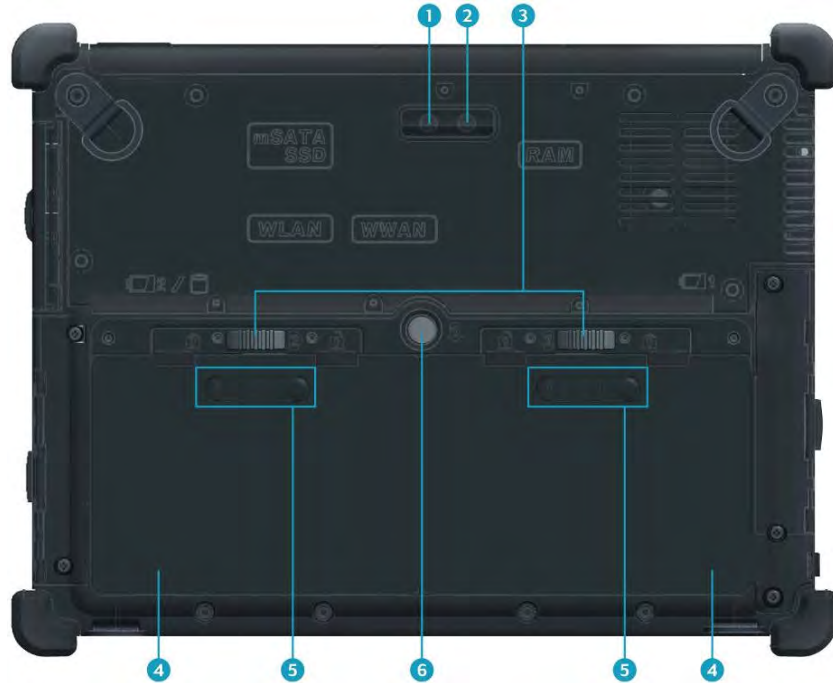


No.	Item	Description
1	Status Indicators (Power, Battery, HDD, Wireless)	Indicate the corresponding function status. See "Status Indicators" on page 15.
2	Camera	Use to take pictures.
3	Speaker	Emit sound.
4	Power button	Press to power on and off the tablet PC.
5	Scanner button	Press to trigger the Barcode scan function if the barcode scanner is on. It can also be assigned to launch a specific Windows-based program via Quick Menu.
6	Number (0~9) button	Press to enter 0~9.
7	Decimal or Dot button	Press to emulate the <i>Decimal/Dot</i> key.
8	Enter button	Press to emulate the <i>Enter</i> key.
9	Backspace button	Press to emulate the <i>Backspace</i> key.
10	Tab button	Press to emulate the <i>Tab</i> key.

Before You Start

No.	Item	Description
11	Camera button	Shutter button for camera utility
12	Function button	<p>Use with other key combinations to perform special functions.</p> <ul style="list-style-type: none"> • <Fn> + <▲>: Increase audio volume. • <Fn> + <▼>: Decrease audio volume. • <Fn> + <▶>: Increase screen brightness. • <Fn> + <◀>: Decrease screen brightness. • <Fn> + <1>: Emulate F1 key. • <Fn> + <2>: Emulate F2 key. • <Fn> + <3>: Emulate F3 key. • <Fn> + <4>: Toggle keypad backlight . • <Fn> + <5>: Emulate F5 key. • <Fn> + <6>: Emulate "y" key. • <Fn> + <8>: Activate/Deactivate RF (WLAN, WWAN, Bluetooth, GPS) communication. <ol style="list-style-type: none"> 1. RF (Including WLAN, WWAN, Bluetooth, GPS) Off 2. WWAN, BT, GPS on; WLAN off 3. WLAN, BT GPS on; WWAN off • <Fn> + <9>: Emulate the <i>Escape</i> key. • <Fn> + <. .>: Emulate "Ctrl+C" (Copy). • <Fn> + <tab>: Emulate "Ctrl+P" (Paste). • <Fn> + <Enter>: Emulate F8 key. • <Fn> + <Backspace>: Emulate "," key. • <Fn> + <+>: Emulate "*" key. • <Fn> + <->: Emulate "/" key.
13	Arrow (up) button	Press to emulate the <i>Up</i> key.
14	Minus (-) button	Press to emulate the <i>Minus(-)</i> key.
15	Plus (+) button	Press to emulate the <i>Plus (+)</i> key.
16	Arrow (left) button	Press to emulate the <i>Left</i> key.
17	Arrow (right) button	Press to emulate the <i>Right</i> key.
18	Security button	Press to exit Windows and enter SAS (Secure Attention Sequence) mode.
19	Stealth mode button	Press to disable all emitting lights and sound.
20	Arrow (down) button	Press to emulate the <i>Down</i> key.

Back View



No.	Item	Description
1	Camera LED flash	Provide additional lighting when taking pictures under low light environment.
2	Camera	Use to take pictures.
3	Battery latch	Lock the battery in place.
4	Battery compartment	Contain the battery.
5	Battery LED indicator	Press the button to display the remaining battery power level.
6	Battery latch release button	Press and hold the button to slide the battery latch to the unlock position.

Bottom View



No.	Item	Description
1	Docking station port	Connect the tablet PC to a docking station.

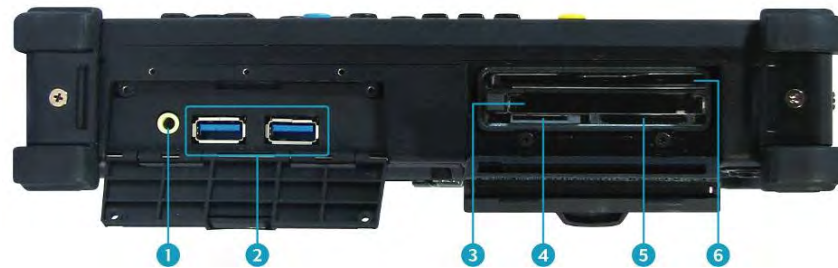
Before You Start

Left View



No.	Item	Description
1	Kensington lock slot	Connect to a Kensington-compatible tablet PC security lock.
2	Mini USB port	Connect USB peripheral devices.
3	Serial port (RS-232)	Connect a peripheral device, such as a printer or other device with serial port.
4	LAN (RJ-45) port	Connect to a local area network (LAN) using an Ethernet cable.
5	DC-in jack	Connect the power adapter.

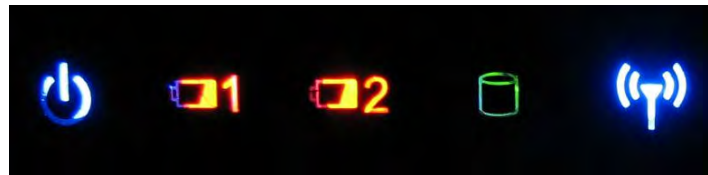
Right View








No.	Item	Description
1	Earphone jack	Connect headphones or external speakers.
2	USB 3.0 ports	Connect USB peripheral devices.
3	PC Card slot	Use to insert Type II PC Card
4	SIM card slot	Not applicable
5	SDHC Card reader	Use to insert SD memory Card
6	Smart card reader	Use to insert smart cards.

Status Indicators

The status indicators in the upper left corner of the tablet PC light up when a particular function of the tablet PC is active. Each indicator is marked with a symbol.



Icon	Item	Description
	Power	The LED always lights on (blue) when the system is running. When the system is in sleep mode, the LED blinks.
 	Battery	Indicate the battery status: <ul style="list-style-type: none"> • Green light means the battery is fully charged or the charging current is 0 for more than 3 minutes with the battery capacity higher than 95%. • Blinking green light means the system is calibrating the battery. • Orange light means the battery is being charged. • Blinking orange light means the battery is being charged but the battery temperature is out of charging range (0~60°C), the battery is being charged for more than 10 hours, or the charging current is 0 for more than 3 minutes with the battery capacity lower than 85%. • Blinking red light means the battery power is low (less than 7%).
	HDD	Indicate the HDD or HDD heater status: <ul style="list-style-type: none"> • Green light indicates the HDD activity (data is being read or written). • Blinking orange light means the heater of 2.5" HDD is heating.
	RF	Indicate the status of RF (WLAN, WWAN, Bluetooth, or GPS) communication. The LED always lights on (blue) when the function is enabled.

Getting Started

This chapter will guide you on how to use your tablet PC.

Powering Up Your Tablet PC

Your tablet PC can be powered up using the AC adapter or the Lithium-ion battery.

Connecting the AC Adapter

The AC adapter powers up your tablet PC and charges the battery.



1. Connect the AC adapter to the DC-in jack of your tablet PC.
2. Connect the AC adapter to the power cord.
3. Plug the power cord to an electrical outlet.

Using Battery Power

1. Install a charged battery in the battery compartment.
2. Remove the AC adapter (if plugged). Your tablet PC will automatically use the battery power.



NOTE

- If your tablet PC is connected to an electrical outlet and the battery is installed, your tablet PC uses power from the electrical outlet.

Installing the Batteries

To install the batteries, follow the steps below:

1. Align and insert the first battery to the battery compartment.
2. Push completely until the battery locks into place.



3. Slide the battery latch to the lock position to secure the battery.



4. Repeat Step 1 to 3 to insert the second battery.



Charging the Battery

The Lithium-ion battery is not fully-charged upon purchase.

To charge the battery, follow the steps below:

1. Install the battery to your tablet PC. See procedures above.
2. Connect the AC adapter to the DC-in jack of your tablet PC.
3. Connect the AC adapter to the power cord.
4. Plug the power cord to an electrical outlet.

Getting Started

Charging Time

Number of battery pack	Charging duration (at 25°C)
1	3 hours
2	6 hours



NOTE

- The charging time may be longer if you are using your tablet PC while charging the battery.

CAUTION

- DO NOT charge the battery if the temperature is below 0°C or higher than 60°C.
- Use only the supplied AC adapter. Using other AC adapters may damage the battery or your tablet PC.

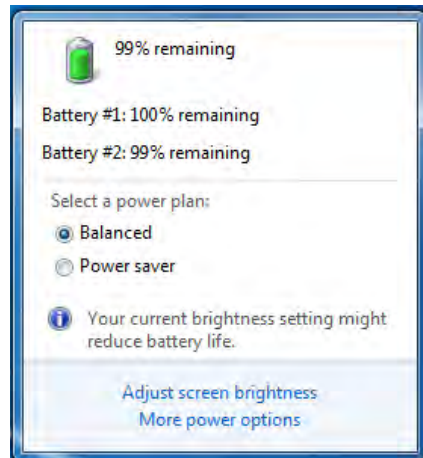
Checking the Battery Level

It is important that you monitor the battery status regularly to ensure you do not run out of power at a critical moment.

To check the remaining battery power, double tap the battery icon in the system tray.



The battery screen appears:



When to replace the Battery Pack

The battery performance gradually decreases over time and usage. We recommend you to replace your battery pack after 18 to 24 months of usage.

Removing the Batteries

To remove the batteries, follow the steps below:

1. Press and hold the battery latch release button to slide the second battery latch to the unlock position.



2. Remove the second battery out of the battery compartment.




3. Repeat Step 1 and 2 to remove another battery.



Starting Your Tablet PC

Turning On Your Tablet PC

Press the  button until the Power LED lights up.

Changing the Display Orientation

You can rotate the display orientation to suit your preference.

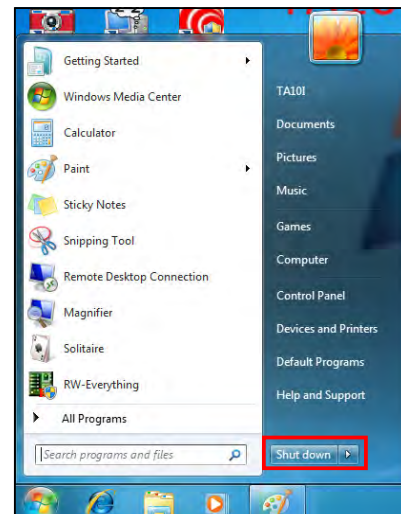


Shutting Down Your Tablet PC

It is important to properly shut down your tablet PC to avoid the loss of unsaved data. To shut down your tablet PC, do the following:

Tap **Start** > **Shut down**.

Wait for your tablet PC to turn off power completely before removing the power source (if necessary).



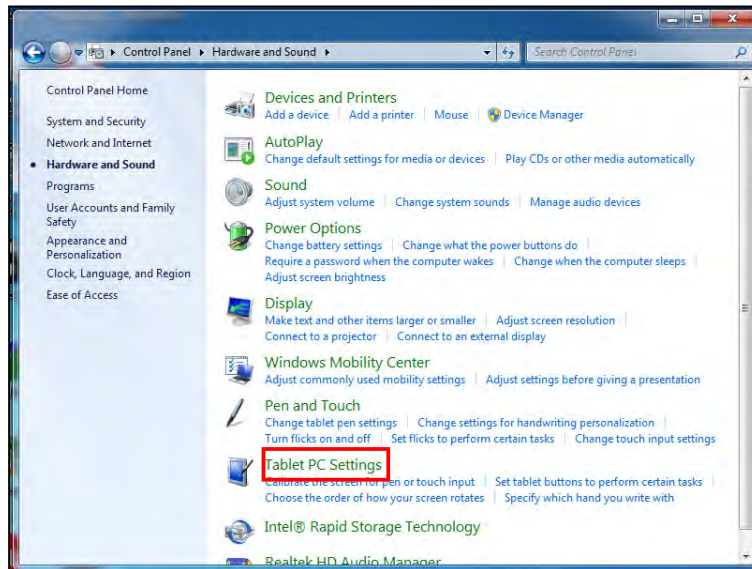
Using the Stylus

This tablet PC comes with an integrated stylus for accurate control input to the LCD touch panel and digitizer. You can use the stylus to point, select, or drag items or objects on the screen.

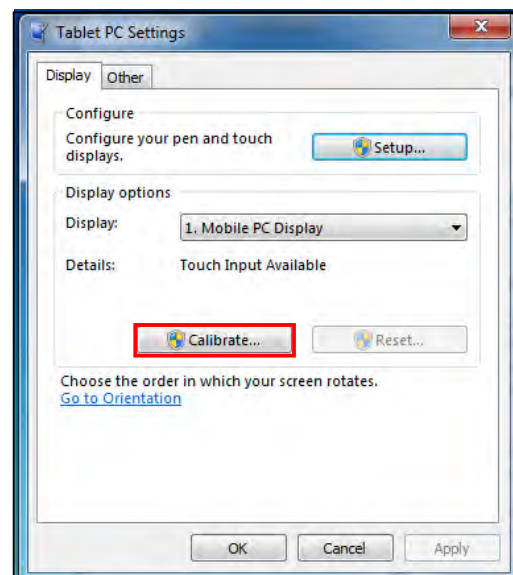
Calibrate the Screen

To ensure touch accuracy, calibrate the screen.

1. Tap **Start** > **Control Panel**.
2. Select **Hardware and Sound** > **Tablet PC Settings**.



3. Tap **Calibrate**.
4. Follow the on-screen instructions to complete screen calibration.



Using the Memory Cards

Your tablet PC supports different types of memory cards to provide faster data transfer. Supported types are as follows:

- SD card
- SDHC card
- Mini-SD card (with adapter)

Inserting a Memory Card

With the label side down, push the memory card into the memory card slot until it clicks into place.

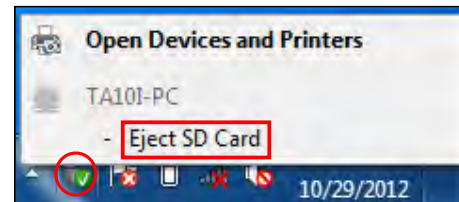


Removing a Memory Card

It is important to remove the memory card properly. Improper removal may cause the data in the memory card to be corrupted and your tablet PC to malfunction.

To properly remove the memory card, follow the steps below:

1. Tap the removable disk icon on the system tray.
2. Tap **Eject SD Card**.
The system confirms that the device can be safely removed.
3. Push the memory card to eject it.
4. Pull the card out from the slot.



Using the Smart Card

Your tablet PC is equipped with a built-in smart card reader that allows you to make secure purchases, store security information, and provide identification and information using a smart card.

Inserting a Smart Card

Insert a smart card into the smart card slot.



Using the SIM Card

You can use a SIM card for wireless internet access.



NOTE

- Check the availability of service and plan rates of data connection with your network service provider.

Inserting a SIM Card

Insert a valid SIM card into the SIM card slot until it clicks into place.



Using the PC Cards

Your tablet PC supports Type II PC Card, which can perform a variety of functions.



NOTE

- Refer to the PC Card manual for specific instructions on the card installation.

Inserting a PC Card

Insert a PC card firmly into the PC card slot until it clicks into the connector.

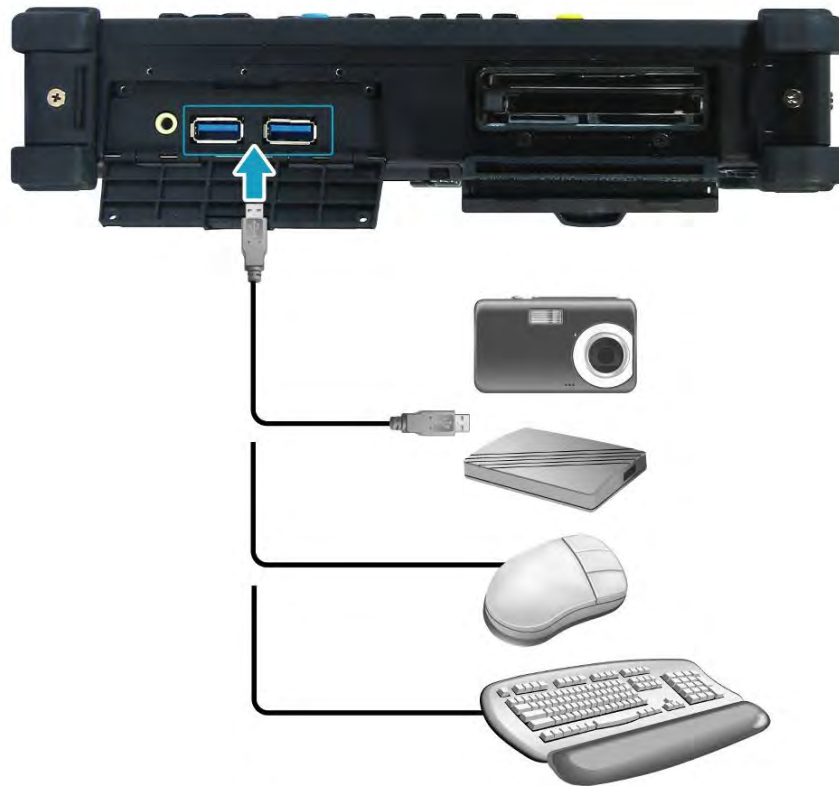


Making Connections

This chapter will guide you on installing peripheral devices to maximize the use of your tablet PC.

Connecting USB Devices

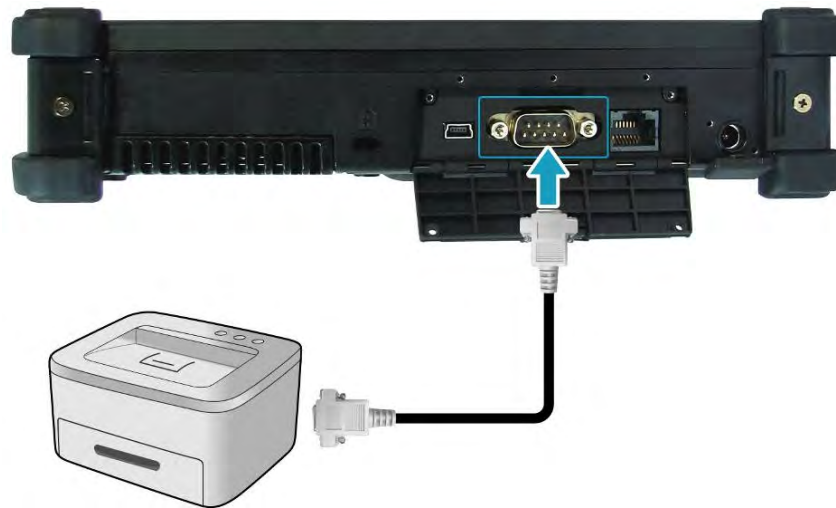
You can connect your tablet PC to other USB devices, such as a mouse, keyboard, digital camera, printer, or an external hard disk drive.



1. Connect one end of a USB cable to the USB port of your tablet PC.
2. Connect the other end to the USB device (if necessary).

Connecting Peripheral Devices

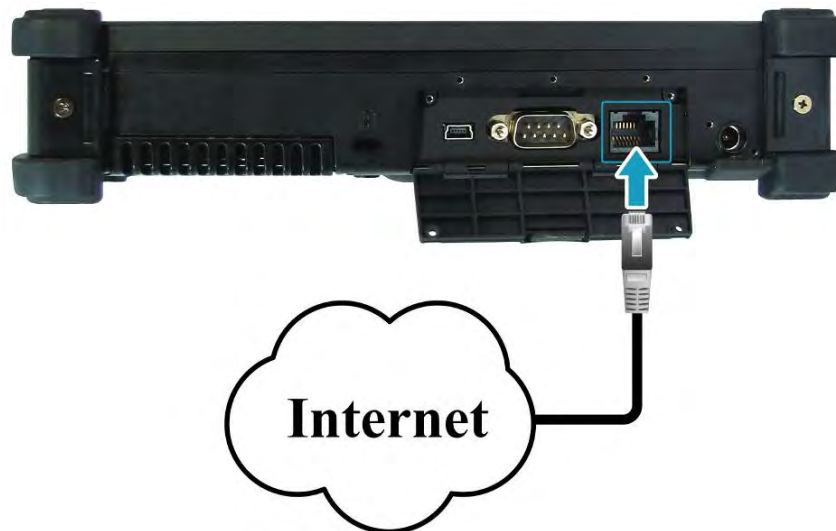
You can connect your tablet PC to other peripheral devices, such as a printer or other device with serial port.



1. Connect one end of an RS-232 cable to the RS-232 port of your tablet PC.
2. Tighten the two screws on the side of the cable plug.
3. Connect the other end to the RS-232 port of a printer or other peripheral device.

Connecting to a Local Area Network (LAN)

You can connect your notebook to a local area network (LAN) using the RJ-45 LAN port.



1. Connect one end of an RJ-45 cable to the LAN port of your tablet PC.
2. Connect the other end to a network hub or a wall socket.

Connecting Headphones

You can connect your tablet PC to a headphone or external speakers. Plug the audio jack of the headphone or speakers to the Headphone jack of your tablet PC.



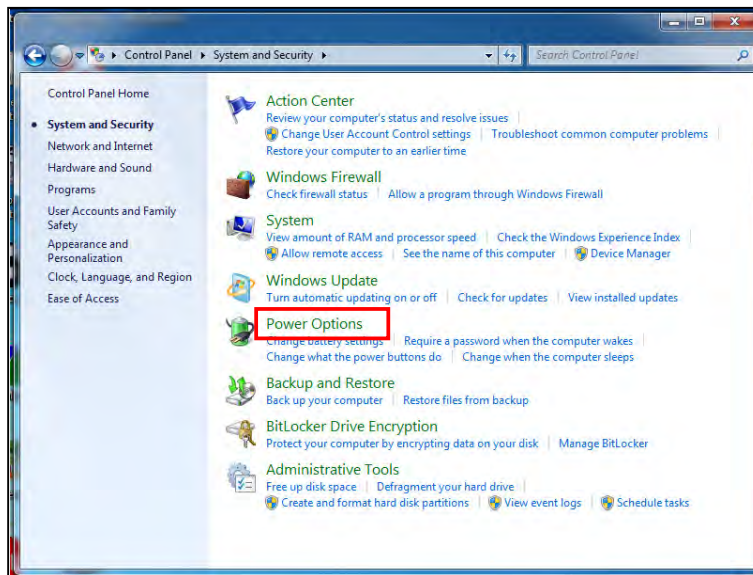
Power Management

This chapter will guide you on how to manage the system power.

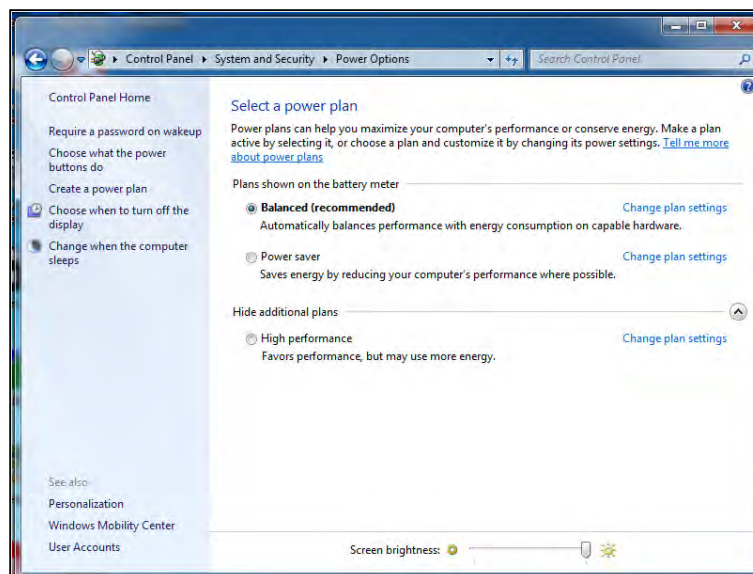
Using the Power Plan

To improve energy efficiency, you can use the power plan to reduce the amount of power your tablet PC uses, maximize the performance, or balance the two.

1. Tap **Start > Control Panel**.
2. Select **System and Security > Power Options**.



3. Select a power plan.



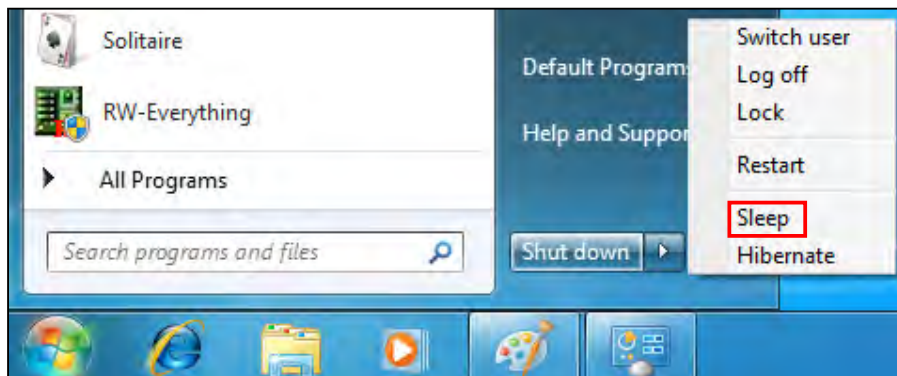
4. To adjust the selected power plan settings, tap **Change plan settings**.

Using the Power Saving Mode


When you are not using the tablet PC, turn off the tablet PC or set the tablet PC to enter sleep mode.

To set the tablet PC to enter sleep mode, follow the steps below:

1. Tap **Start**.
2. Select **Shut down > Sleep**.



To wake up the tablet PC from sleep mode, do one of the following:

- Press the  button.
- Press any key on the external keyboard.

Using the BIOS Setup Utility


Your tablet PC has a BIOS setup utility which allows you to configure important system settings, including settings for various optional functions of the tablet PC. This chapter explains how to use the BIOS setup utility.

BIOS Setup Menu

The BIOS Setup Utility allows you to configure your tablet PC basic settings. When you turn your tablet PC on, the system reads this information to initialize the hardware so that it can operate correctly. Use the BIOS setup utility to change your tablet PC start-up configuration. For example, you can change the security and power management routines of your system.

Starting the BIOS Setup Utility

You can only enter the BIOS setup utility as the tablet PC is booting, that is between the time you turn on the tablet PC and before the Windows interface appears.

If your tablet PC is already on, shut down your tablet PC completely (power off) and restart it and then press the  button to enter the setup utility.

Navigating and Entering Information in BIOS

Use the following keys to move between fields and to enter information:

Tablet Keypad	External Keyboard	Description
◀ / ▶	← →	Selects screen.
▲ / ▼	↓ ↑	Moves up/down to select items.
↵	Enter	Confirms the selection and enters the selected menu screen.
+ / -	+ / -	Changes an option for the selected items.
-	F1	Displays the Help screen.
-	F2	Invokes the previous values.
-	F3	Loads optimized default values.
-	F4	Saves the changes and exits Setup.
<Fn> + <9>	Esc	Exits any section. If you wish to exit the BIOS utility without saving changes or go to the main menu, then press this key.

Users are allowed to enter new values to replace the default settings in certain fields, and the rest of the fields are specified by system default parameters and cannot be modified by users. Reverse the attribute of the main options and press the ↵ button to enter into the submenu. Press both <Fn> + <9> buttons to return to the previous configuration page.

Main Menu

The Main menu displays the system overview information about BIOS version, CPU features, and total memory size. You can also set the system date and time.



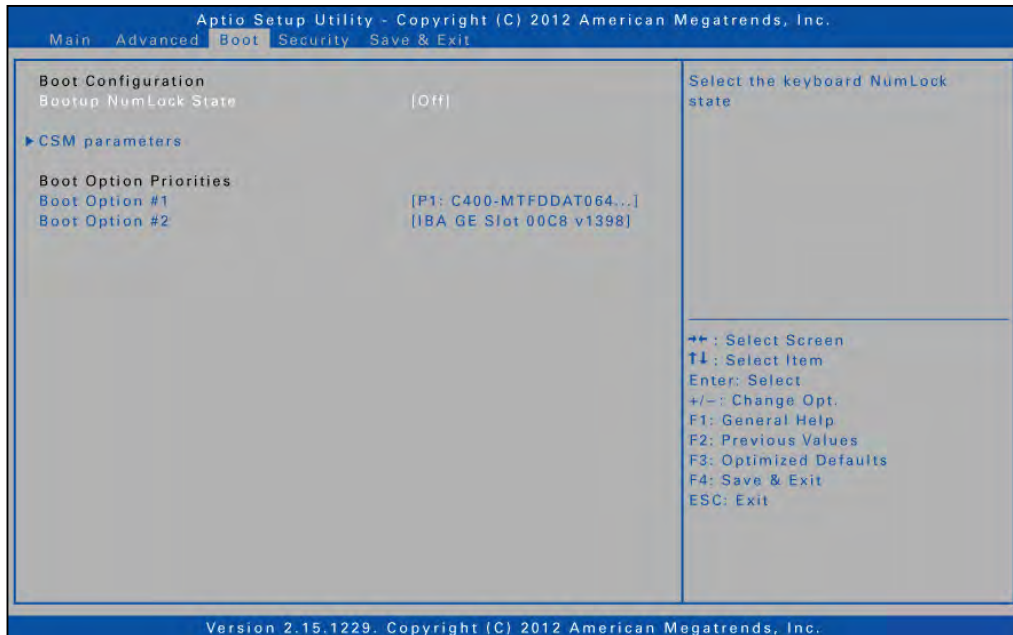
Advanced Menu

The Advanced menu allows you to select SATA mode, set the keypad backlight timer, BIOS hotkey press, calibrate fan and battery, and configure devices, power management, Intel Rapid Start Technology, and Trusted Computing settings.



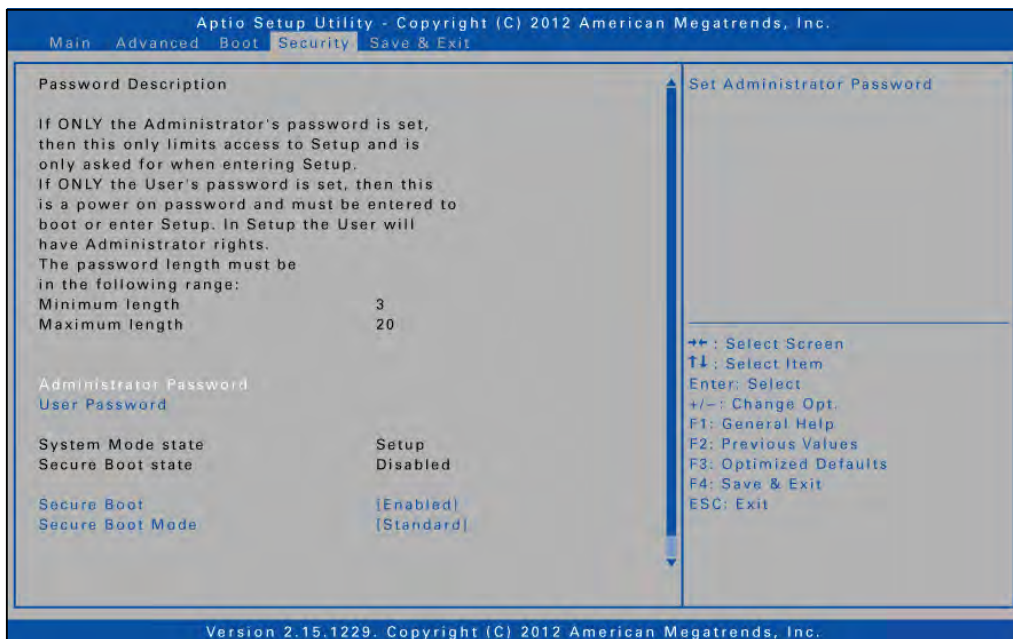
Boot Menu

The Boot menu allows you to configure the boot type and boot sequence.



Security Menu

The Security menu allows you to set or change the Administrator and User passwords, and configure Secure Boot settings.



Save & Exit Menu

The Save & Exit menu allows you to save or discard the changes, or restore the default values for all setup options before leaving the BIOS Setup Menu.



Specifications

Features		Specifications
Processor	Type	<ul style="list-style-type: none"> 3rd Generation Intel i-Core Series
Chipset		QM77
System Memory	Type	Two 204-pin SODIMM sockets each for DDRIII1600 2GB, 4GB, 8GB
	Maximum Memory	16GB
Display	Display	Standard : <ul style="list-style-type: none"> 10.4" XGA (1024x768) LCD with resistive multi-touch panel Sunlight readable: <ul style="list-style-type: none"> 10.4" XGA (1024x768) High brightness LCD with sunlight readable resistive multi-touch panel
	Light Sensor	Built-in ambient light sensor-
	Digitizer	Optional 10.4" Digitizer with active stylus Auto switch between digitizer and touch input
	SSD	<ul style="list-style-type: none"> mSATA SSD 64/128/256 Optional 2.5" 9.5mm SATA HDD 320/500/750GB
Storage	Expansion Slot	<ul style="list-style-type: none"> PCMCIA Optional Smart card reader SD card slot (SDHC)
I/O Devices	Camera	<ul style="list-style-type: none"> Front facing 1.3M pixel camera Optional rear facing 5M pixel auto-focus camera
	Barcode scanner	<ul style="list-style-type: none"> Optional Barcode scanner, support 1D, 1D/2D barcode
	Communications	Internal 10/100/1000M bit Ethernet LAN
	Communications I/O Ports	Intel WiFi 6235 module that supports 802.11a/b/g/n and Bluetooth 4.0
Communications I/O Ports HD Audio One speaker Analog Mic. Array (With 2 Microphones)		Optional WWAN (Via USB WWAN expansion enclosure)
		Optional Integrated GPS <ul style="list-style-type: none"> Left Side I/O: RS-232x1(Support 5 Voltage when jumper is set), RJ 45x1,mini USB 2.0x1, DC-inx1 Right Side I/O: USB 3.0x2,

Features		Specifications
		<ul style="list-style-type: none"> ▪ Audio out (For headphone)x1 ▪ Optional RF connectors for external WWAN, WLAN, or GPS antennas
	AC/DC Adapter	AC power input:100V-240V,50Hz-60Hz, 65W ;output:19V <ul style="list-style-type: none"> ▪ Compliant with Energy Star 5.2
Battery Life	One 6 cells battery pack (5200mAh, 57.72 W) is 4~5 hr.	
Power	Second Battery	Support optional second Battery 2nd battery is available if main-storage is mSATA
	Operating Temperature	-20°C ~ 60°C
	Storage Temperature	-51~71°C
Environment	Operating Humidity	5% ~ 95%
	Drop	26 drops with 5 feet high to 2" plywood over concrete, unit on with SSD
	Dust Proof/Water Sealing	IP65
	Vibration	Mil Std 810G 514.6 Procedure I category 24 Figure 514.6E-1 (Transportation) General Minimal Integrity, unit on with SSD
	Salt fog	Mil Std 810G 509.5
	TPM 1.2 Kensington Lock slot Intel AT or Computrace	
Operating System	Supports Windows 7 32 & 64 bit version Window 8 32 & 64 bit version	
Security	Weight: 2.27 Kg/5 Pound	
Dimensions	285(W)x215(H)x41.5(D)mm/11.2(W)x8.5(H)x1.63(D) inch	

Specifications are subject to change without prior notice.