

PTT-U

<Product Descriptions>

- Bluetooth PTT button for iOS and Android
- Embedded power switch extends battery life.
- CR2032 battery provides at least 1 year battery life
- Intended function: control your cell phone through Bluetooth technology.

<Specification>

- Type: Bluetooth PTT button
- Operating Temp: $-20^{\circ}\text{C} \pm 2^{\circ}\text{C} \sim 50^{\circ}\text{C} \pm 2^{\circ}\text{C}$
- Approx. Weight: 10g (PTT-U1)
- Bluetooth version: Bluetooth V4.0 (BLE only)
- Battery: CR2032
- Battery life: at least 1 year
- Accessory:
 - a. None (PTT-U1)
 - b. Vecro fastener strap (PTT-U2)
 - c. Rubber ring (PTT-U3)

<Compatibility>

- Zello iOS



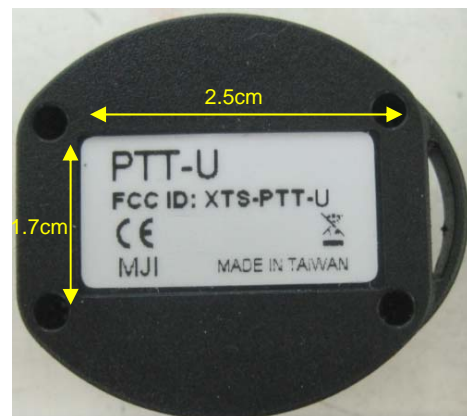
PTT-U1



PTT-U2



PTT-U3



Federal Communication Commission Interference Statement

This equipment has been tested and found to comply with the limits for a Class B digital device, pursuant to Part 15 of the FCC Rules. These limits are designed to provide reasonable protection against harmful interference in a residential installation. This equipment generates uses and can radiate radio frequency energy and, if not installed and used in accordance with the instructions, may cause harmful interference to radio communications. However, there is no guarantee that interference will not occur in a particular installation. If this equipment does cause harmful interference to radio or television reception, which can be determined by turning the equipment off and on, the user is encouraged to try to correct the interference by one of the following measures:

- Reorient or relocate the receiving antenna.
- Increase the separation between the equipment and receiver.
- Connect the equipment into an outlet on a circuit different from that to which the receiver is connected.
- Consult the dealer or an experienced radio/TV technician for help.

FCC Caution: Any changes or modifications not expressly approved by the party responsible for compliance could void the user's authority to operate this equipment.

This device complies with Part 15 of the FCC Rules. Operation is subject to the following two conditions:

- (1) This device may not cause harmful interference, and
- (2) This device must accept any interference received, including interference that may cause undesired operation.

This equipment complies with FCC RF radiation exposure limits set forth for an uncontrolled environment. To maintain compliance with FCC RF exposure compliance requirements, please avoid direct contact to the transmitting antenna during transmitting.

Notice : The changes or modifications not expressly approved by the party responsible for compliance could void the user's authority to operate the equipment.

IMPORTANT NOTE: To comply with the FCC RF exposure compliance requirements, no change to the antenna or the device is permitted. Any change to the antenna or the device could result in the device exceeding the RF exposure requirements and void user's authority to operate the device.

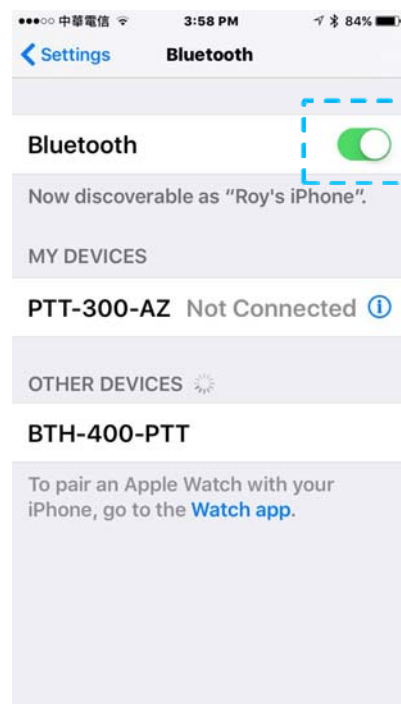
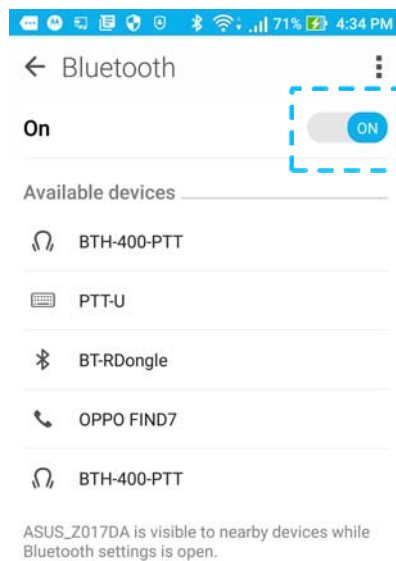


Start pairing PTT-U1/U2/U3 with your smart phone

1. Power PTT-U1/U2/U3

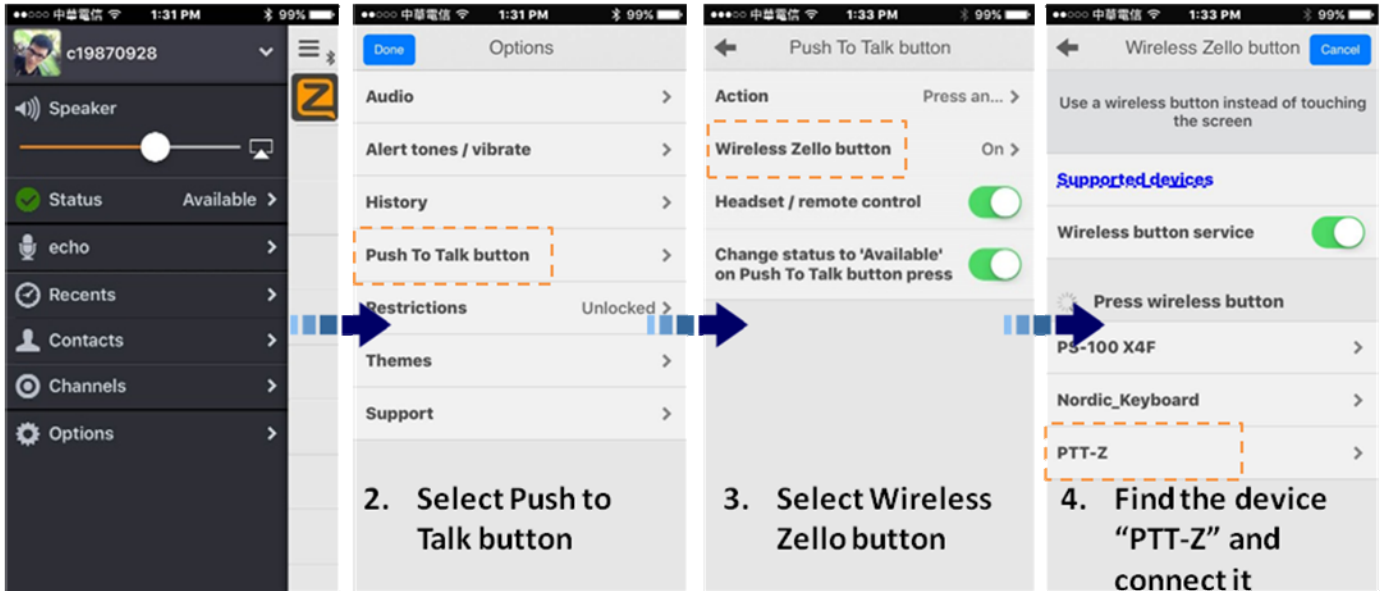


2. Start Bluetooth function on your smart phone

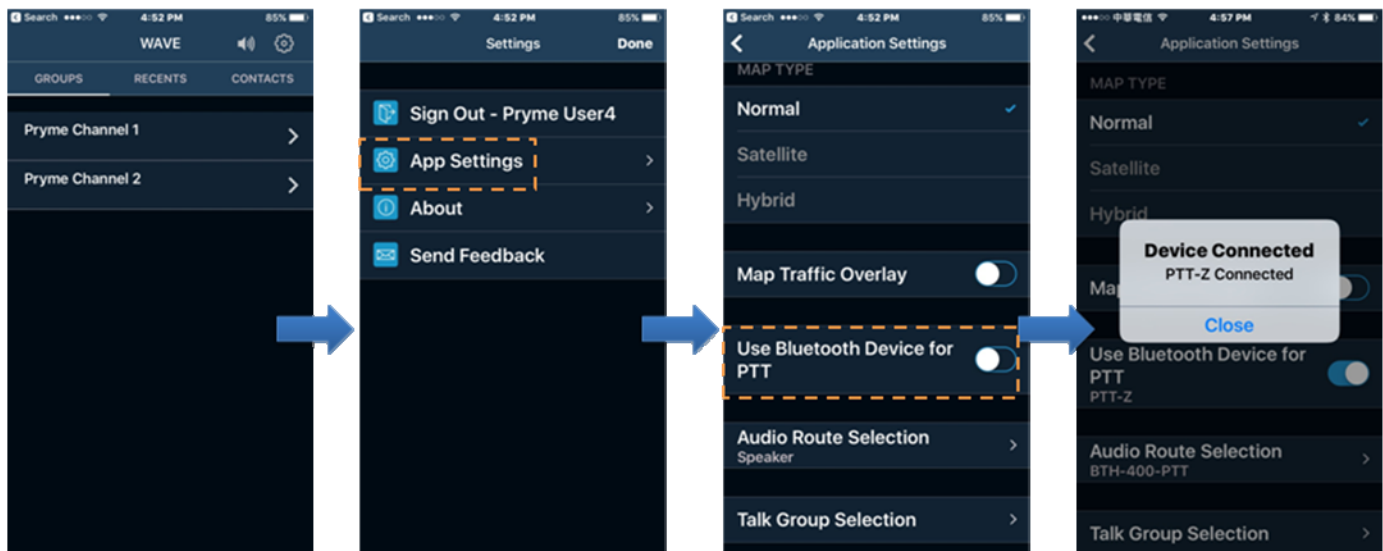


Pairing procedure for Zello iOS

Start Zello, go to options, tap Push-To-Talk button, tap Wireless Zello button, start Wireless button service, find the device PTT-Z and connect it.



Pairing procedure for WAVE iOS



1. Start WAVE and tap "Options"

2. Tap "App Settings"

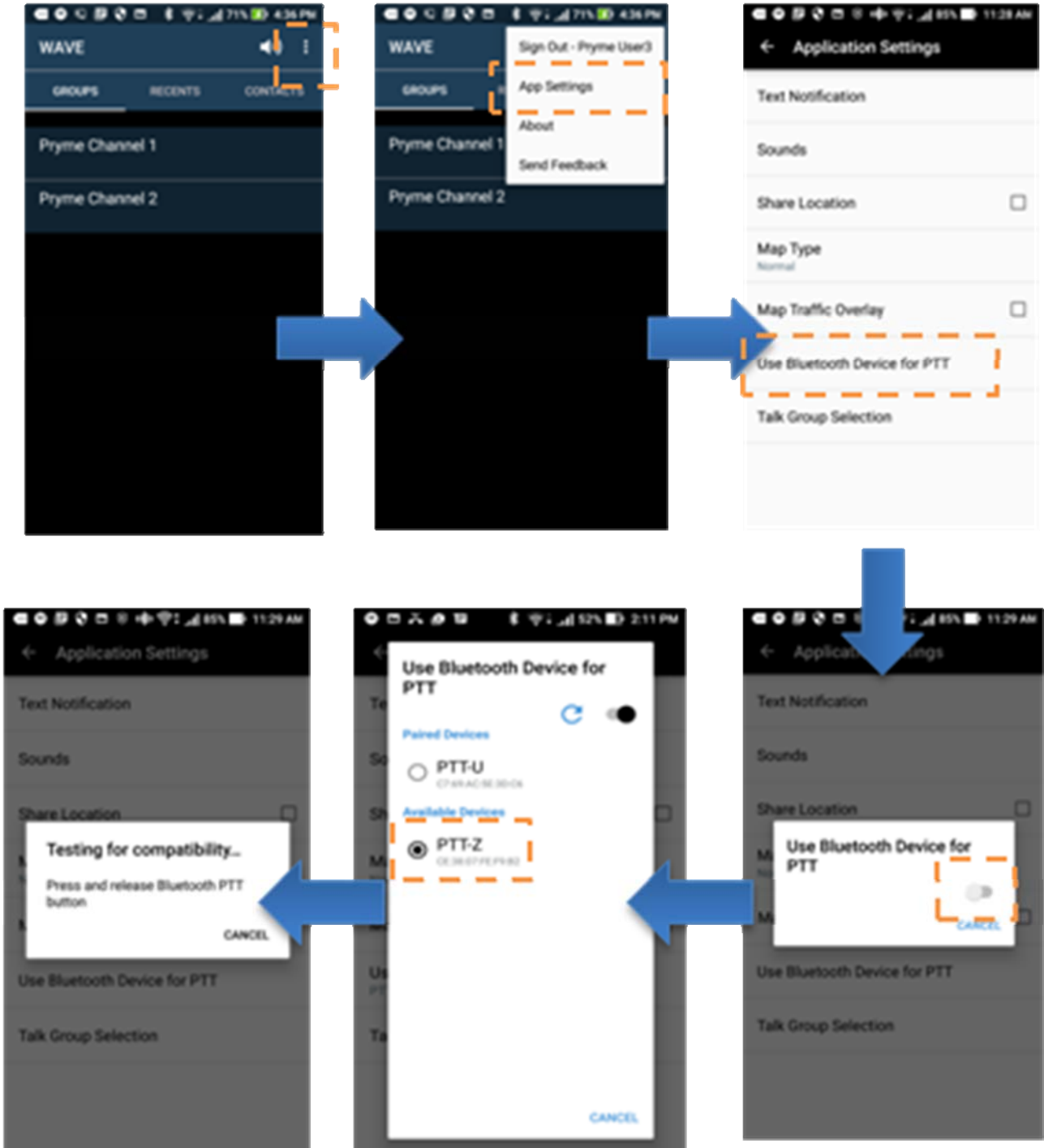
3. Start "Use Bluetooth Device for PTT"

4. Press the button on PTT-U1/U2/U3 and then BT PTT will link to WAVE



Pairing procedure for WAVE Android

Start WAVE, go to settings, tap “App Settings”, tap and start “Use Bluetooth Device for PTT”, select available device “PTT-Z”, and then connect PTT-Z.





Using EP31-P12-CEL or EP31-P12N-CEL with PTT-UX

Mobility Sound releases 2 types acoustic tube earphone respectively for iPhone and Android phone. The difference between these 2 solutions is the pickup phone button on the earphone. Both models are for POC APP only.

