

Select your country



_select your country 

- Welcome** >
- Operation >
- Getting started >
- Call functions >
- In-call functions >
- Music >
- Settings >
- Care >
- Support >
- Safety & disposal >
- Certification & safety approvals >
- Glossary >
- Index >

Welcome

Congratulations on your new **TheTrulyOne Universal Bluetooth Display Car Kit** by novero.

TheTrulyOne is designed to serve as an in-car extension of your regular mobile phone, only easier to operate while in the car.

TheTrulyOne offers several features which will satisfy many different user-needs. After a quick and easy set-up, it is easy to make and receive handsfree calls and play your favourite music on either your phone or music player.

This user guide will help you get started as we present you with all the great features and conveniences that provide a truly customized user experience.

Enjoy!



Box contents

[_read more](#)

Installation

[_read more](#)

Welcome >

Operation >

Getting started >

Call functions >

In-call functions >

Music >

Settings >

Care >

Support >

Safety & disposal >

Certification &
safety approvals >

Glossary >

Index >

Back <

Box contents

Handsfree unit

Remote control

Display unit

Microphone

System cable with DIN / ISO car connectors

Quick user guide

Quick installation guide

CD with full user guide and installation guide

- Welcome** >
- Operation >
- Getting started >
- Call functions >
- In-call functions >
- Music >
- Settings >
- Care >
- Support >
- Safety & disposal >
- Certification & safety approvals >
- Glossary >
- Index >

Back <

Installation

To put safety first, always have a qualified professional install **TheTrulyOne** in your car. Please refer to the installation guide for more information.

To ensure optimal performance with **TheTrulyOne**, make sure to adjust the microphone after installation so that it points towards you. You may safely do this yourself.



Operation

Welcome >

Operation >

Getting started >

Call functions >

In-call functions >

Music >

Settings >

Care >

Support >

Safety & disposal >

Certification & safety approvals >

Glossary >

Index >

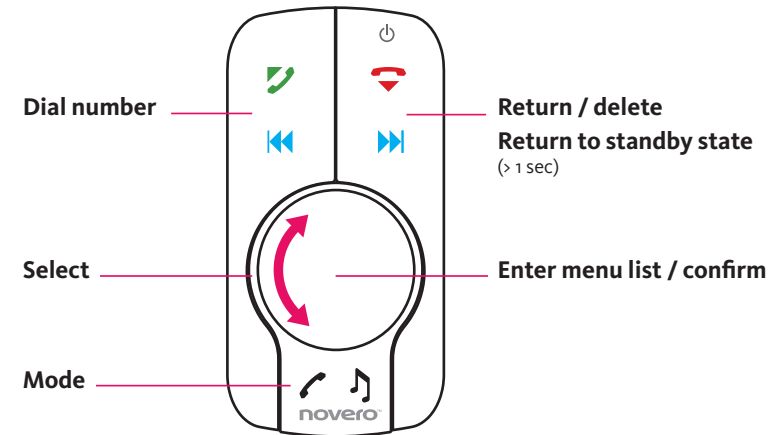
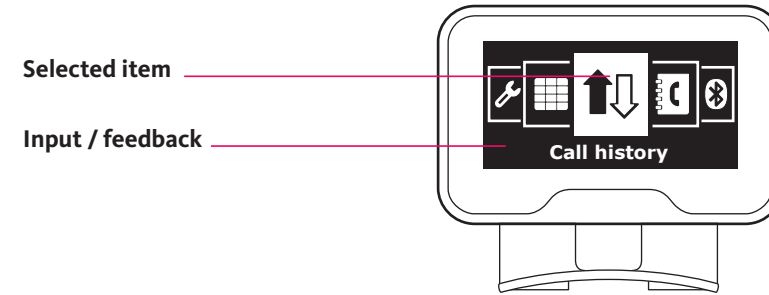
Back <

TheTrulyOne has an intuitive interface that is easy to operate without taking your eyes or mind off traffic. The display provides visual input and feedback for all operations.

The remote has two large keys which make it easy to perform basic actions. You can dial or redial a number by pressing the left key . You can press the right key to exit a menu, go back to the pervious menu, or to delete your typed input.

With the center wheel , you can enter the menu and access several functionalities by pressing it – or you can turn it to select from a list of options or to adjust the volume.

The mode key enables you to switch between music or phone mode, by simply pressing it. The symbols on the left and right keys change depending on the mode.



For your safety
Please remember that driving a car safely requires your full attention. Use your car kit with consideration and only when traffic conditions allow for safe use.

Shortcuts
[_read more](#)

Menu overview
[_read more](#)

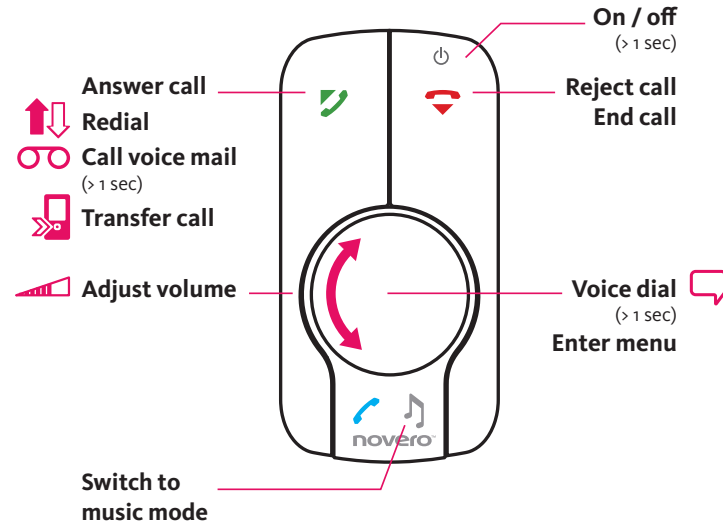


Shortcuts

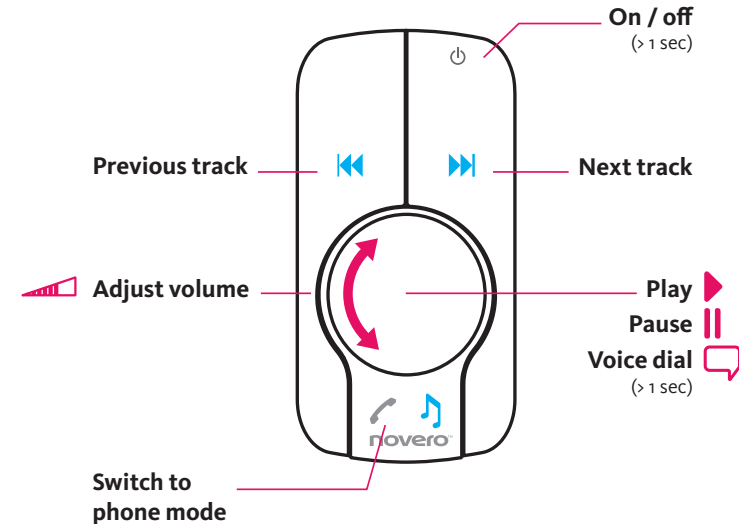
TheTrulyOne has a number of shortcuts making daily use easy.



Phone mode



Music mode



Welcome >

Operation >

Getting started >

Call functions >

In-call functions >

Music >

Settings >

Care >

Support >

Safety & disposal >

Certification & safety approvals >

Glossary >

Index >

Back <

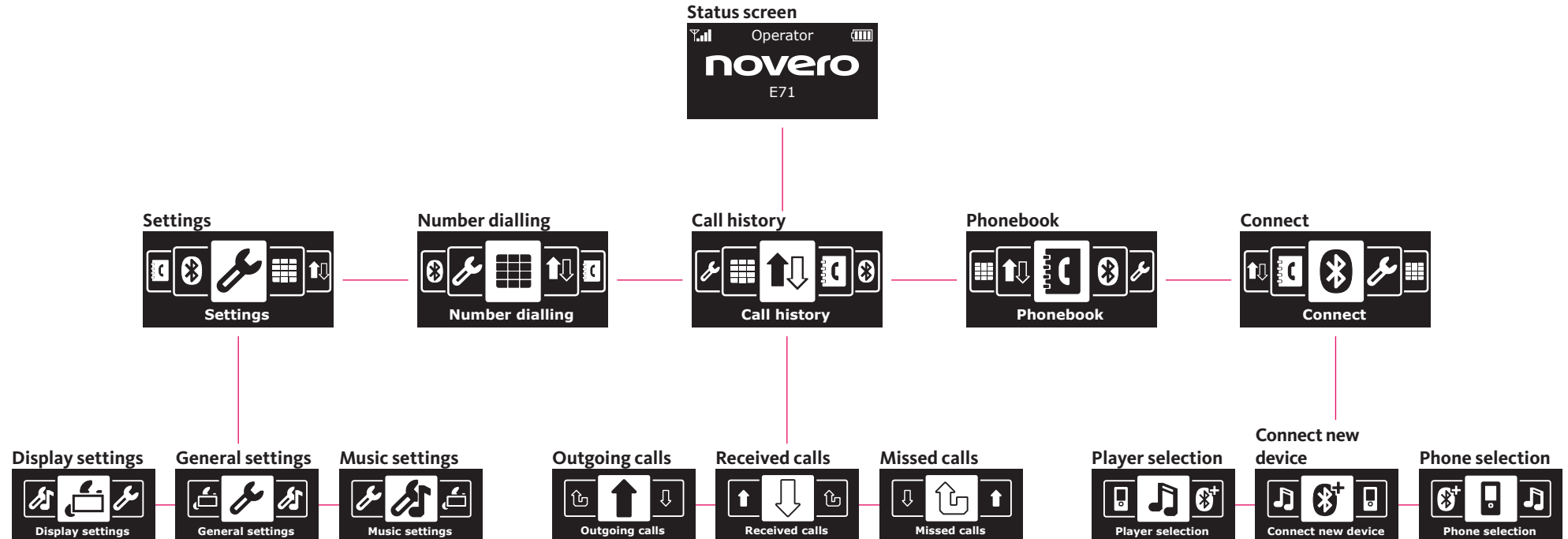
Operation

[_read more](#)



Menu overview

TheTrulyOne has a simple and user-friendly menu structure that gives you easy access to all features.



Welcome >

Operation >

Getting started >

Call functions >

In-call functions >

Music >

Settings >

Care >

Support >

Safety & disposal >

Certification & safety approvals >

Glossary >

Index >

Back <

Getting started

Welcome >

Operation >

Getting started >

Call functions >

In-call functions >

Music >

Settings >

Care >

Support >

Safety & disposal >

Certification &
safety approvals >

Glossary >

Index >

Back <



Turn power on / off

[_read more](#)



Connect new device

[_read more](#)



Switch mode

[_read more](#)

- Welcome >
- Operation >
- Getting started** >
- Call functions >
- In-call functions >
- Music >
- Settings >
- Care >
- Support >
- Safety & disposal >
- Certification & safety approvals >
- Glossary >
- Index >

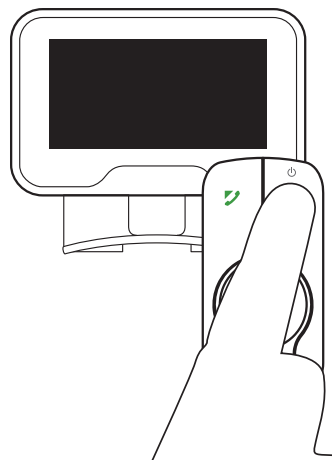
Back <


Turn power on / off



TheTrulyOne will automatically turn on when you start your car, and turn off when you switch off the ignition. If the ignition signal is not connected to your car, the integrated motion sensor will automatically turn on the car kit once you start driving.- You can also manually turn the power of **TheTrulyOne** on and off.

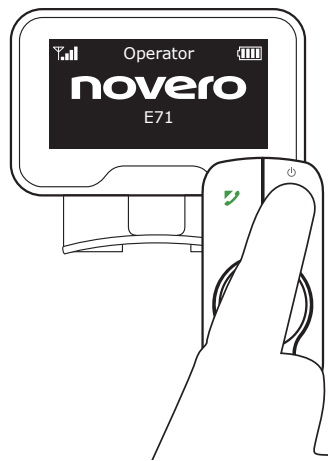
Turn power on




Press and hold  to turn on the car kit.

The first time you turn on the car kit, you will be asked to select display language.

Turn power off



Press and hold  to turn off the car kit.

Tip

If you have previously paired with a phone or player, **TheTrulyOne** will automatically try to connect with it when it is turned on.

If connection is successful you will hear a short beep. If connection is not successful you will hear a warning tone.

Language settings

[_read more](#)

Getting started

[_read more](#)

- Welcome >
- Operation >
- Getting started** >
- Call functions >
- In-call functions >
- Music >
- Settings >
- Care >
- Support >
- Safety & disposal >
- Certification & safety approvals >
- Glossary >
- Index >

Back <

Connect new device



To pair the car kit with your mobile device, activate the Bluetooth feature of the device and search for **novero TheTrulyOne**. See the user guide for your mobile device for instructions.

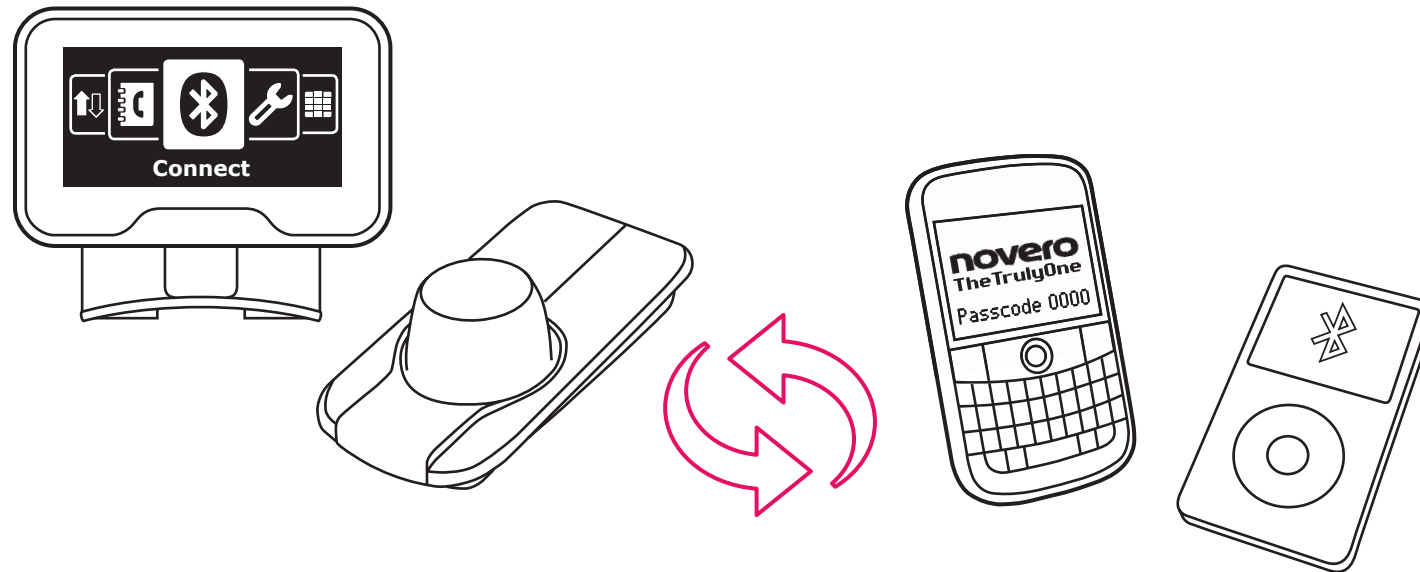
When your mobile device recognizes **novero TheTrulyOne**, select it and confirm your choice with passcode or PIN=0000. Your mobile device will confirm when pairing is complete.

Tip
You can also connect through the Connect menu, and switch to or delete already connected mobile devices.

If you mark **TheTrulyOne** as trusted or authorized on your phone, **TheTrulyOne** will automatically connect without having to confirm on your phone.

Switch / delete device
[_read more](#)

Getting started
[_read more](#)

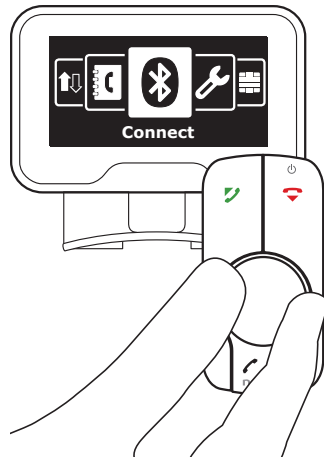




Switch / delete device

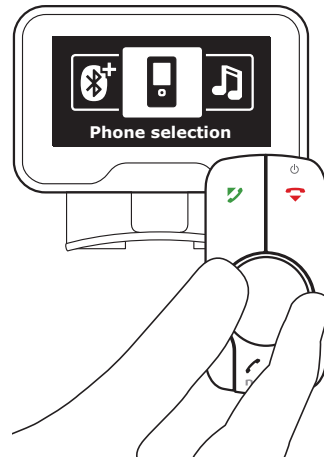
When turned on, **TheTrulyOne** will automatically try to connect with the last connected mobile device. If this device is not available, **TheTrulyOne** will search for other previously connected devices. – If you want to switch manually to another connected device, simply go through the Connect menu.

Go to Connect



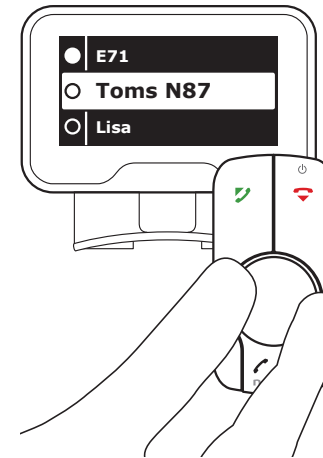
Enter the menu list, turn ⌚ to select Connect, and press ⌚ to confirm.

Select list



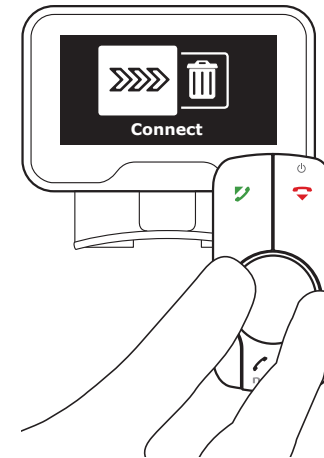
Turn ⌚ to select Phone selection or Player selection, and press ⌚ to confirm.

Select device



Turn ⌚ to select device, and press ⌚ to confirm.

Switch / delete device



Turn ⌚ to select Connect or Delete from list, and press ⌚ to confirm.

Connect new device

[_read more](#)

Getting started

[_read more](#)

- Welcome >
- Operation >
- Getting started >**
- Call functions >
- In-call functions >
- Music >
- Settings >
- Care >
- Support >
- Safety & disposal >
- Certification & safety approvals >
- Glossary >
- Index >

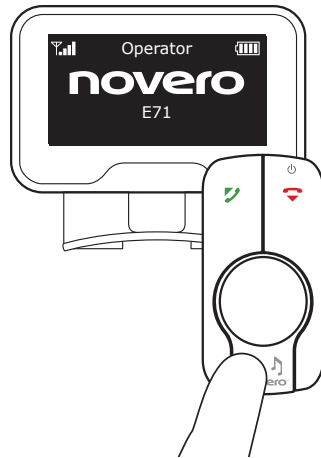
Back <




Switch mode

TheTrulyOne automatically starts up in phone mode when turned on. If the connected phone is also a music player – or both a phone and a music player are connected to **TheTrulyOne** – it is very simple to switch between the two modes.

Switch mode



Press  to switch from phone mode to music mode or vice versa.

Getting started
[_read more](#)

Welcome >

Operation >

Getting started >

Call functions >

In-call functions >

Music >

Settings >

Care >

Support >

Safety & disposal >

Certification & safety approvals >

Glossary >

Index >

Back <

Call functions

Welcome >

Operation >

Getting started >

Call functions >

In-call functions >

Music >

Settings >

Care >

Support >

Safety & disposal >

Certification &
safety approvals >

Glossary >

Index >

Back <



Basic call functions
[_read more](#)



Call history
[_read more](#)



Voice-dial
[_read more](#)



Call from phonebook
[_read more](#)



Call VIPs
[_read more](#)



Dial number
[_read more](#)



Call voice mail
[_read more](#)



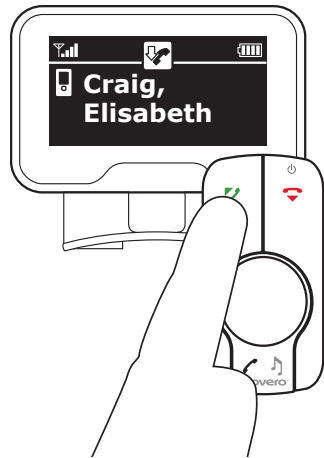
Handle multiple calls
[_read more](#)




Basic call functions

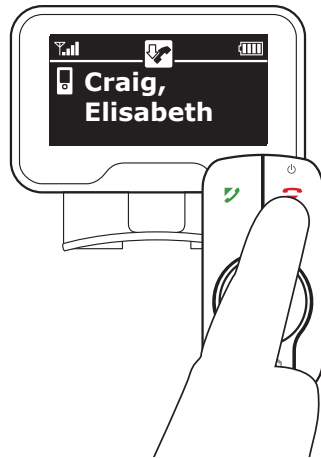
With the basic call functions of **TheTrulyOne**, you can manage incoming calls with only the push – or turn – of a button.

Answer call



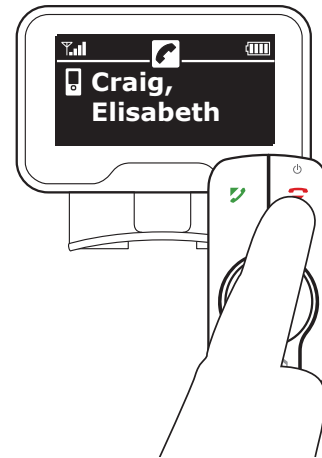
Press  to answer a new call.


Reject call



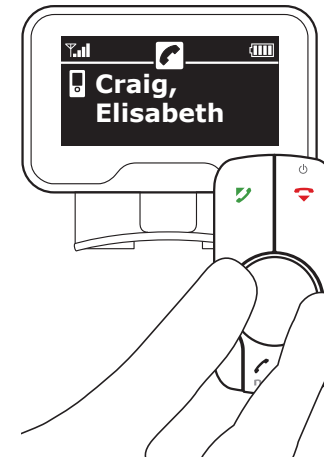
Press  to reject a new call.


End call



Press  to end an active call.

Adjust volume



Turn  to:

- adjust the ring tone volume of an incoming call
- adjust the loudspeaker volume during an active call.

Call functions

[_read more](#)

Welcome >

Operation >

Getting started >

Call functions >

In-call functions >

Music >

Settings >

Care >

Support >

Safety & disposal >

Certification & safety approvals >

Glossary >



Index >

Back <

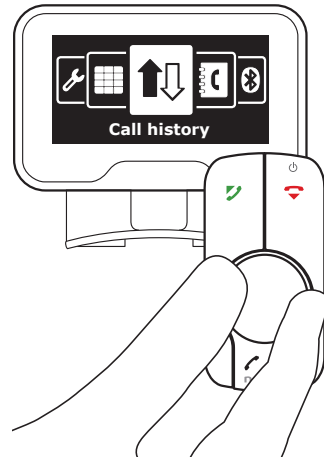




Call history

In the call history you can see a list of recent outgoing, incoming and missed call. – You can also see call information or add a number to your VIPs.

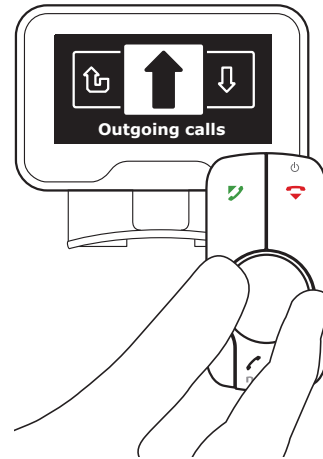
Tip
In idle mode you can redial last outgoing call by pressing  twice or access outgoing call history by pressing  once.



Go to Call history



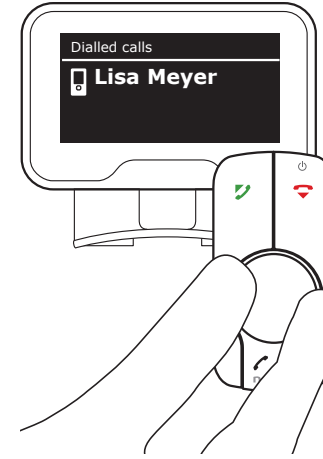
Enter the menu list, turn  to select Call history, and press  to confirm.




Select call type



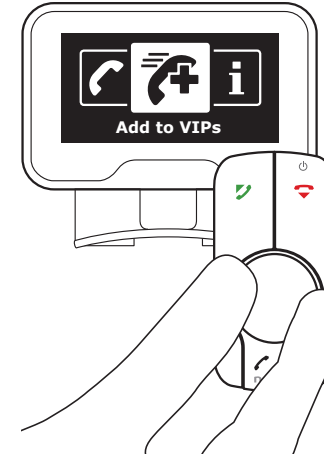
Turn  to select call type, and press  to confirm.



Select number



Turn  to select call. Press  to call number or press  to select call options.

Call options



Turn  to select call options and press  to confirm.

VIP settings

[_read more](#)

Call functions

[_read more](#)

Welcome >

Operation >

Getting started >

Call functions >

In-call functions >

Music >

Settings >

Care >

Support >

Safety & disposal >

Certification & safety approvals >

Glossary >

Index >

Back <

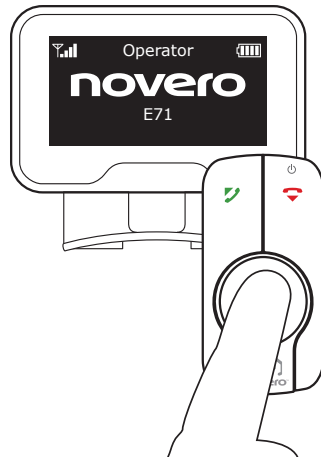



Voice-dial

With **TheTrulyOne**, you can easily activate the voice-recognition function of your phone, e.g. to make a call.

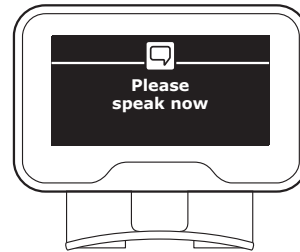
Voice-recognition
Please refer to the user guide for your phone for information about voice-recognition features.

Activate voice dial



Press and hold  in any mode to activate voice dialling.

Say voice tag



Say the voice tag of the number that you want to call to make the call.

Call functions
[_read more](#)

- Welcome >
- Operation >
- Getting started >
- Call functions** >
- In-call functions >
- Music >
- Settings >
- Care >
- Support >
- Safety & disposal >
- Certification & safety approvals >
- Glossary >
- Index >

Back <



Call from phonebook

When you connect **TheTrulyOne** with your phone, your contacts are automatically downloaded onto car kit.

Tip
Through the Settings menu, you can choose if you want your contacts sorted by first or last name.

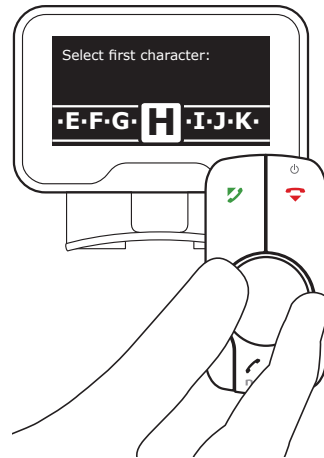
Go to Phonebook



Enter the menu list, turn ⌚ to select Phonebook, and press ⌚ to confirm.

If your car kit supports Arabic, you must select Arabic or Western name search before entering the specific name.

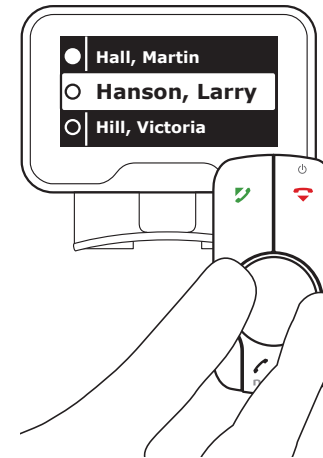
Enter name



Alternately turn and press ⌚ to enter the relevant name letter-by-letter.

At any point, press 🟢 to begin a search among your contacts.

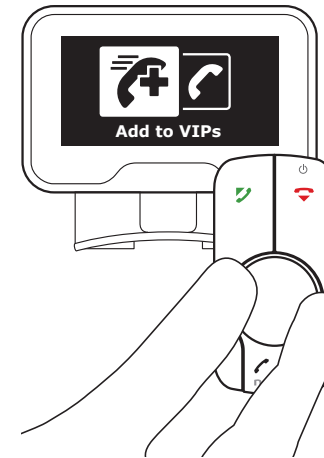
Select contact



Turn ⌚ to select the contact you want to call, and press ⌚ to confirm.

Press 🟢 to call number or press ⌚ to select options.

Call options



Turn ⌚ to select call option and press ⌚ to confirm.

VIP settings
[_read more](#)

Name sorting
[_read more](#)

Call functions
[_read more](#)

- Welcome ➤
- Operation ➤
- Getting started ➤
- Call functions** ➤
- In-call functions ➤
- Music ➤
- Settings ➤
- Care ➤
- Support ➤
- Safety & disposal ➤
- Certification & safety approvals ➤
- Glossary ➤
- Index ➤

Back ◀

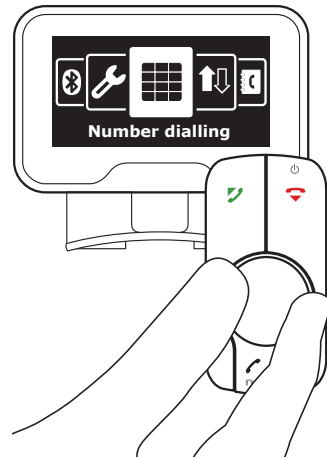




Call VIPs

With **TheTrulyOne** you can speed-dial the numbers of your favourite contacts, if you have added them to your VIP list.

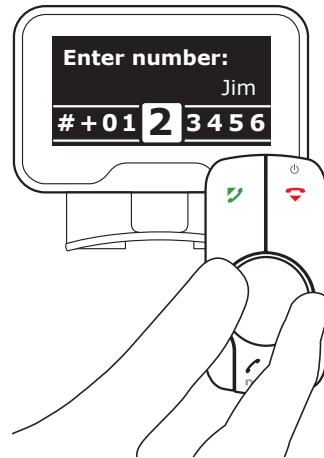
Tip
Through both Settings, Phonebook and Call history, you can assign VIP numbers to your favourite contacts.



Go to Number dialling



Enter the menu list, turn  to select Number dialling, and press  to confirm.

Enter and call VIP



Turn  to select the VIP you want to call, and press  to call.

- Welcome >
- Operation >
- Getting started >
- Call functions** >
- In-call functions >
- Music >
- Settings >
- Care >
- Support >
- Safety & disposal >
- Certification & safety approvals >
- Glossary >
- Index >

Back <

VIP settings

[_read more](#)

Call functions

[_read more](#)

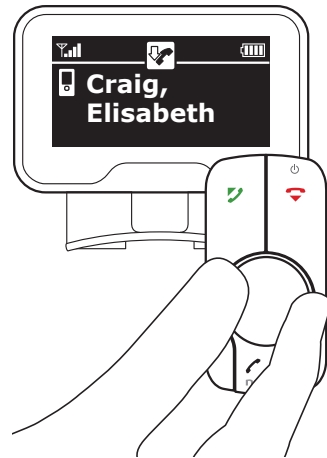




Dial number

You can use the display and remote control of **TheTrulyOne** as a simplified extension of your regular phone, only easier to operate while in the car.

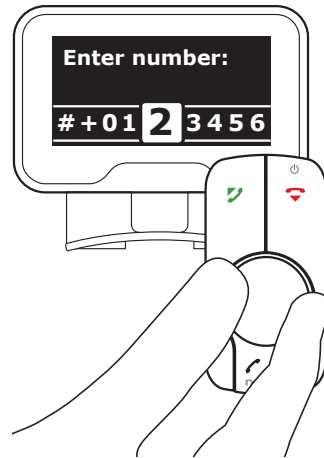
For your safety
Please remember that driving a car safely requires your full attention. Use the Number dialling menu in your car kit with consideration.


Go to Number dialling



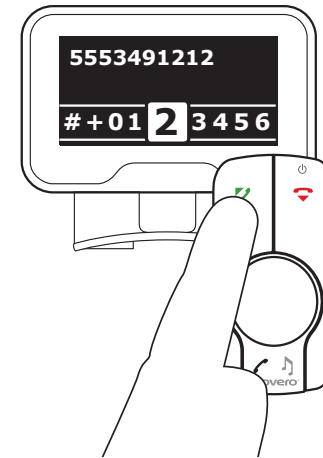
Enter the menu list, turn  to select Number dialling, and press  to confirm.

Enter number



Alternately turn and press  to enter the number.

Call number



Press  to call number.

- Welcome >
- Operation >
- Getting started >
- Call functions** >
- In-call functions >
- Music >
- Settings >
- Care >
- Support >
- Safety & disposal >
- Certification & safety approvals >
- Glossary >
- Index >

Back <

Call functions
[_read more](#)

- Welcome >
- Operation >
- Getting started >
- Call functions >**
- In-call functions >
- Music >
- Settings >
- Care >
- Support >
- Safety & disposal >
- Certification & safety approvals >
- Glossary >
- Index >
- Back <

Call voice mail




With **TheTrulyOne**, you can speed-dial your voice mail, if supported by your service provider, and you have entered the voice mail number in the car kit settings.

Tip
If you have a voice mail, VIP number 1 is automatically assigned to this voice mail.

Call voice mail



Press and hold  to call your voice mail.

Voice mail number
[_read more](#)

Call functions
[_read more](#)



Handle multiple calls

If you receive a second call during an active call, the display will show this, and you can either:

Put the active call on hold
and answer the new call
[_read more](#)

End the active call
and answer the new call
[_read more](#)

Reject the new call
and continue the active call
[_read more](#)

Welcome >

Operation >

Getting started >

Call functions >

In-call functions >

Music >

Settings >

Care >

Support >

Safety & disposal >

Certification &
safety approvals >

Glossary >

Index >

Back <



Put the active call on hold

Welcome >

Operation >

Getting started >

Call functions >

In-call functions >

Music >

Settings >

Care >

Support >

Safety & disposal >

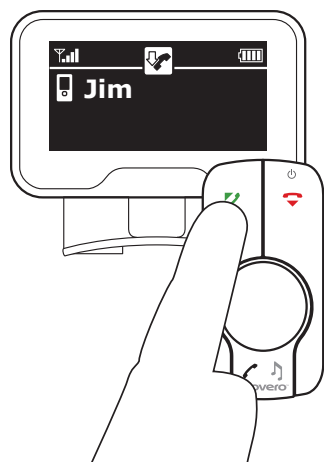
Certification & safety approvals >


Glossary >

Index >

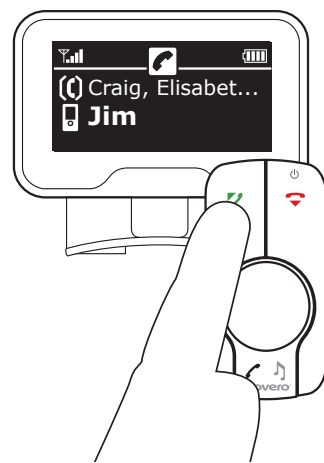
Back <


Put active call on hold



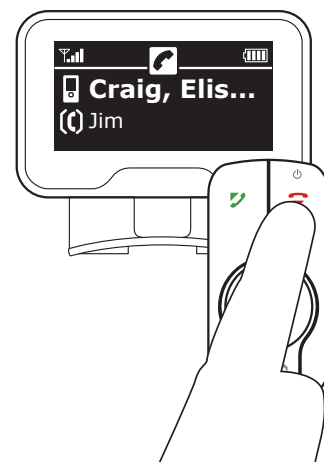
Press  to answer the new call and put the active call on hold.


Toggle between calls



Press  to toggle between the two calls.

End active call



Press  to end the active call and continue with the call on hold.

Handle multiple calls

[_read more](#)

Call functions

[_read more](#)



End the active call

Welcome >

Operation >

Getting started >

Call functions >

In-call functions >

Music >

Settings >

Care >

Support >

Safety & disposal >

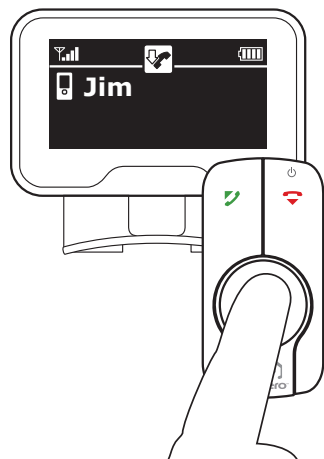
Certification & safety approvals >


Glossary >

Index >

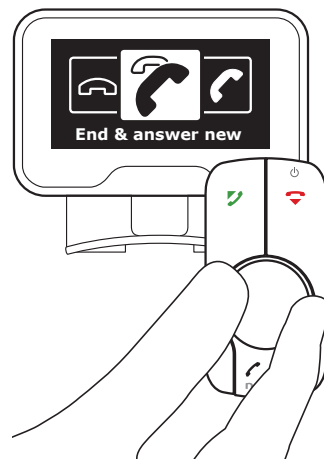
Back <



Enter menu



During the active call, press  to enter the menu.

Select End & answer new



Turn  to select End & answer new, press  to confirm, and continue with the new call.

Tip

Through the menu, you can also respond to a third call by choosing between:

- End & answer new
- Reject.

Handle multiple calls

[_read more](#)

Call functions

[_read more](#)



Reject the new call

Welcome >

Operation >

Getting started >

Call functions >

In-call functions >

Music >

Settings >

Care >

Support >

Safety & disposal >

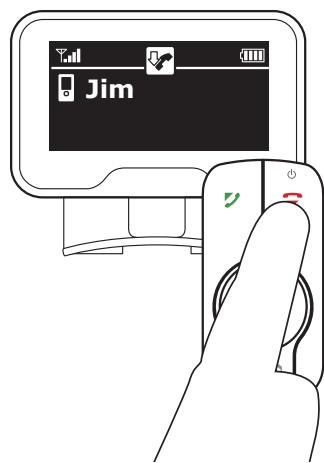
Certification & safety approvals >


Glossary >

Index >

Back <

Reject new call



Press  to reject the new call and continue with the active call.

Handle multiple calls

[_read more](#)

Call functions

[_read more](#)

In-call functions

Welcome >

Operation >

Getting started >

Call functions >

In-call functions >

Music >

Settings >

Care >

Support >

Safety & disposal >

Certification &
safety approvals >

Glossary >

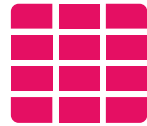
Index >

Back <



**Mute / unmute
microphone**

[_read more](#)



Send digits

[_read more](#)



Transfer call

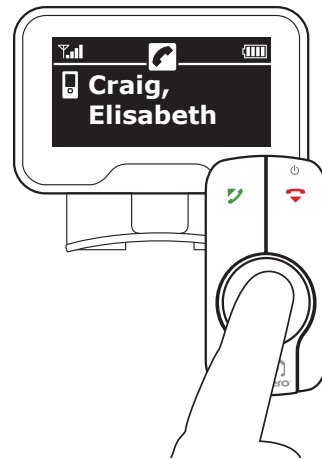
[_read more](#)




Mute / unmute microphone

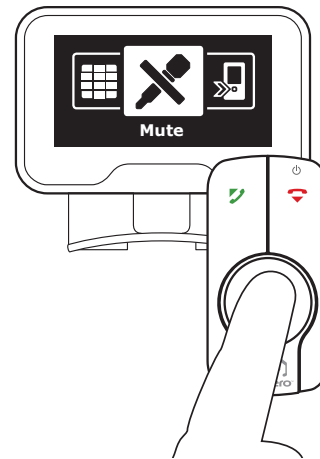
If you are mainly listening during a call, you can mute the microphone. To activate the microphone again simply unmute.

Enter menu



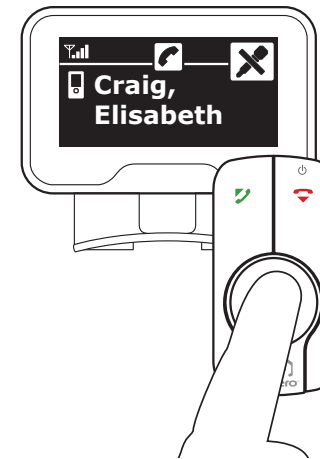
During an active call, press  to enter the menu.

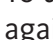
Mute microphone



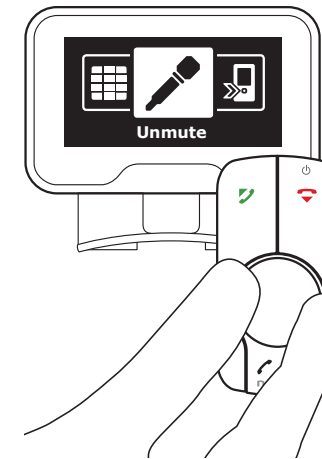
Press  to mute.

Enter menu



To unmute the microphone again, press  to re-enter the menu.

Unmute microphone



Press  to unmute.

In-call functions
[_read more](#)

- Welcome >
- Operation >
- Getting started >
- Call functions >
- In-call functions >**
- Music >
- Settings >
- Care >
- Support >
- Safety & disposal >
- Certification & safety approvals >
- Glossary >
- Index >

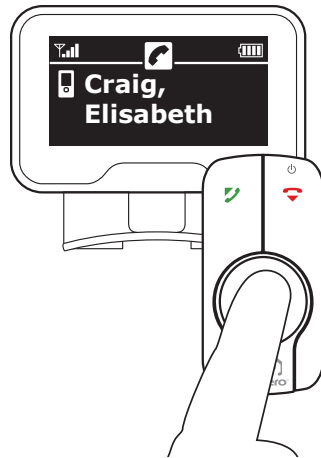
Back <




Send digits

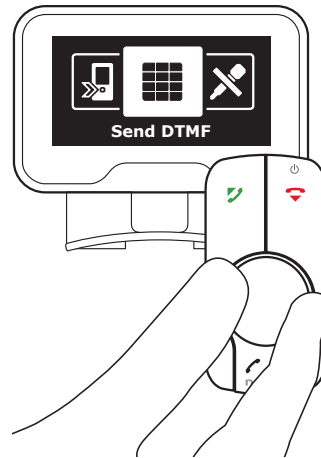
With **TheTrulyOne**, you can send digits (DTMF tones) during an active call to e.g. dial an extension number.



Enter menu



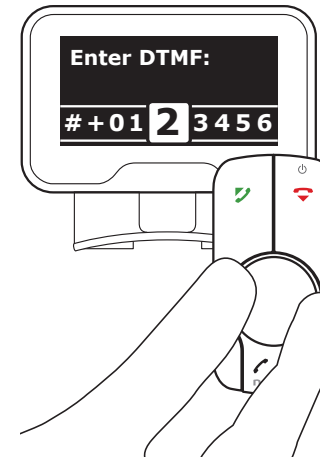
During an active call, press  to enter the menu.


Select Send DTMF




Turn  to select Send DTMF, and press  to confirm.

Enter digits



Alternately turn and press  to enter the digits you want to send.

Press  to finish and go back to status screen.

DTMF tones

[_read more](#)

In-call functions

[_read more](#)

Welcome >

Operation >

Getting started >

Call functions >

In-call functions >

Music >

Settings >

Care >

Support >

Safety & disposal >

Certification & safety approvals >

Glossary >

Index >

Back <

- Welcome >
- Operation >
- Getting started >
- Call functions >
- In-call functions** >
- Music >
- Settings >
- Care >
- Support >
- Safety & disposal >
- Certification & safety approvals >
- Glossary >
- Index >
- Back <

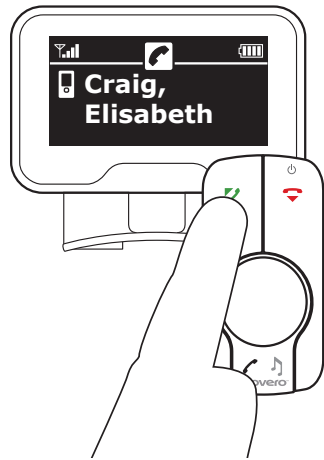
Transfer call




For maximum flexibility, you can transfer an active call from your phone to **TheTrulyOne** or vice versa, if e.g. you need to leave the car. A call can be transferred using **TheTrulyOne** as well as your phone.

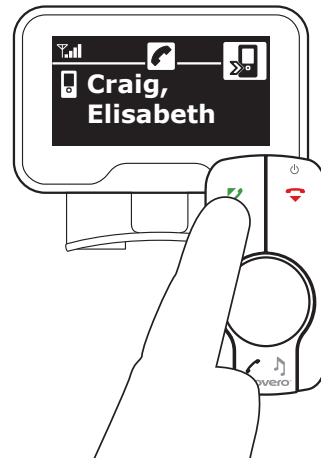
Tip
You can also transfer calls through your phone. Follow the instructions on your phone.

Transfer call to phone



During an active call via **TheTrulyOne**, press  to transfer the call to your phone.

Transfer call back to TheTrulyOne



Press  to transfer the call back to **TheTrulyOne**.

In-call functions
[_read more](#)

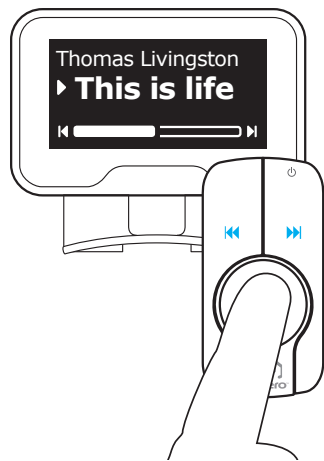
- Welcome >
- Operation >
- Getting started >
- Call functions >
- In-call functions >
- Music** >
- Settings >
- Care >
- Support >
- Safety & disposal >
- Certification & safety approvals >
- Glossary >
- Index >

Music

With **TheTrulyOne** in music mode, you have all the essential tools to play your favourite music right at hand. When entering music mode **TheTrulyOne** automatically starts the music player.

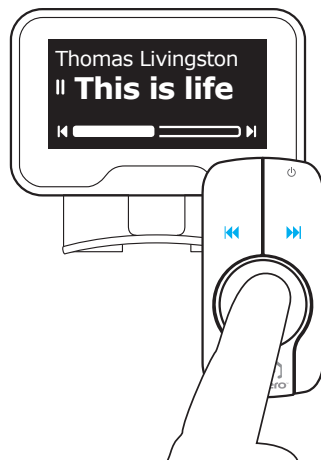
Tip
Selection of titles or playlists has to be made through your music player.

Play



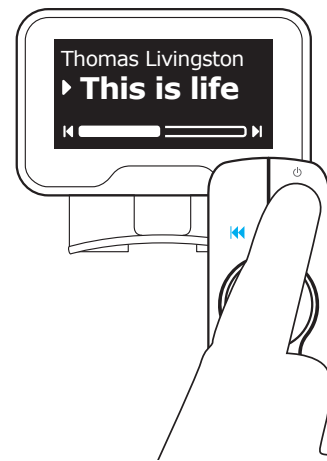
Press  to play.

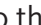

Pause



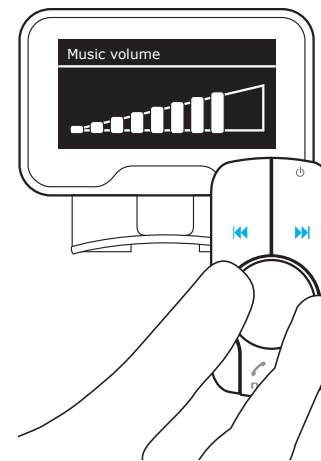
Press  to pause.


Next / previous



Press  to skip to the next track, or press  twice to skip to the previous track.

Adjust volume



Turn  to adjust the volume.

- Welcome >
- Operation >
- Getting started >
- Call functions >
- In-call functions >
- Music >
- Settings >**
- Care >
- Support >
- Safety & disposal >
- Certification & safety approvals >
- Glossary >
- Index >
- Back <

Settings

In the Settings menu, you can change the basic settings or restore the factory settings of **TheTrulyOne**. The menu is divided into General settings, Display settings, and Music settings.



General settings
[_read more](#)



Display settings
[_read more](#)



Music settings
[_read more](#)

General settings



Welcome >

Operation >

Getting started >

Call functions >

In-call functions >

Music >

Settings >

Care >

Support >

Safety & disposal >

Certification &
safety approvals >

Glossary >

Index >

Back <

Language

[_read more](#)

VIPs

[_read more](#)

**Phone
sounds**

[_read more](#)

**Voice mail
number**

[_read more](#)

Service info

[_read more](#)

**Factory
settings**

[_read more](#)

Audio test

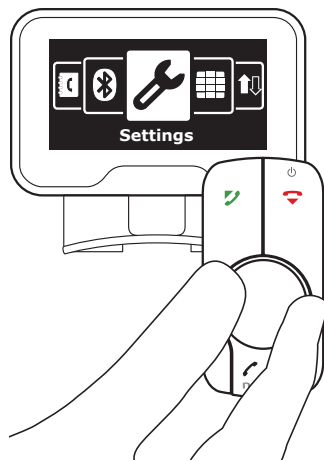
[_read more](#)





Language

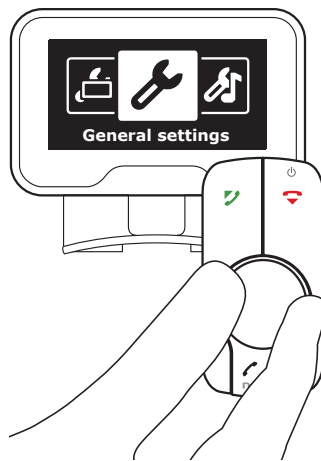
TheTrulyOne can operate in a wide range of display languages.



Go to Settings



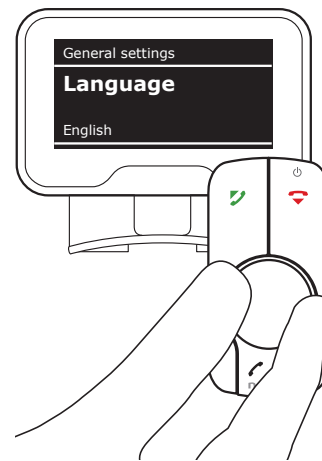
Enter the menu list, turn , and press  to confirm.



Go to General settings



Turn  to select General settings, and press  to confirm.



Go to Language



Turn  to select Language, and press  to confirm.

Select display language



Turn  to select language, and press  to confirm.

General settings

[_read more](#)

Welcome >

Operation >

Getting started >

Call functions >

In-call functions >

Music >

Settings >

Care >

Support >

Safety & disposal >

Certification & safety approvals >

Glossary >

Index >

Back <



VIPs

With **TheTrulyOne** you can assign VIP numbers to your favourite contacts. If they change, you can replace or delete the numbers again.

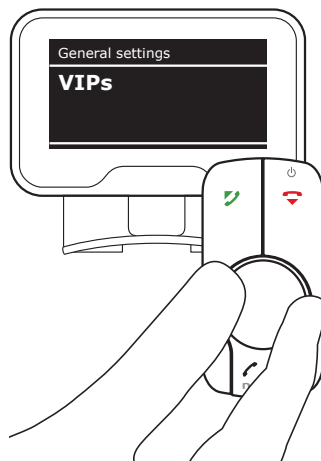
Go to General settings



Enter the menu list, turn ⌚ to select Settings, and press ⌚ to confirm.

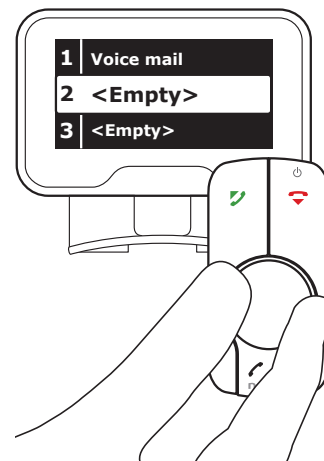
Turn ⌚ to select General settings, and press ⌚ to confirm.

Go to VIPs



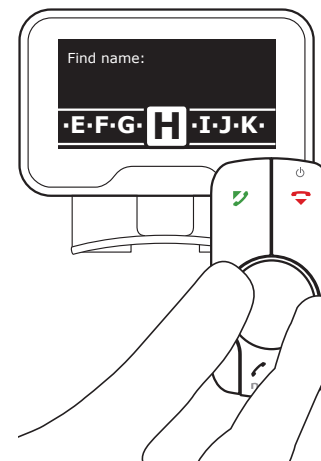
Turn ⌚ to select VIPs, and press ⌚ to confirm.

Select VIP number



Turn ⌚ to select the VIP number you want to assign to and press ⌚ to confirm.

Assign VIP



Search among your phonebook contacts and press ⌚ to select and assign to VIP number.

Tip

If you have a voice mail, VIP number 1 is automatically assigned to this voice mail.

Through the menu you can also delete or replace assigned VIPs.

Phonebook

[_read more](#)

Call VIPs

[_read more](#)

Voice mail

[_read more](#)

General settings

[_read more](#)

Welcome >

Operation >

Getting started >

Call functions >

In-call functions >

Music >

Settings >

Care >

Support >

Safety & disposal >

Certification & safety approvals >

Glossary >

Index >

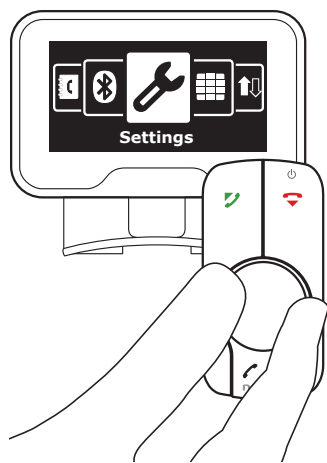
Back <





Phone sounds

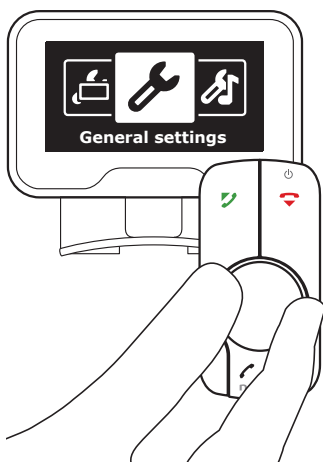
With **TheTrulyOne** you can choose between audio feedback on all actions or only on calls.



Go to Settings



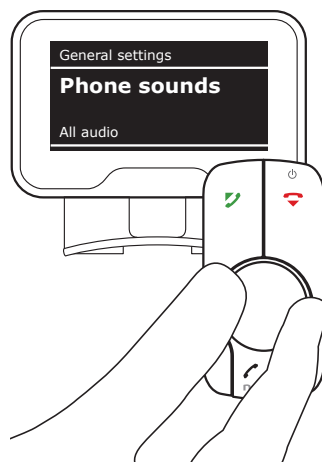
Enter the menu list, turn  to select Settings, and press  to confirm.



Go to General settings



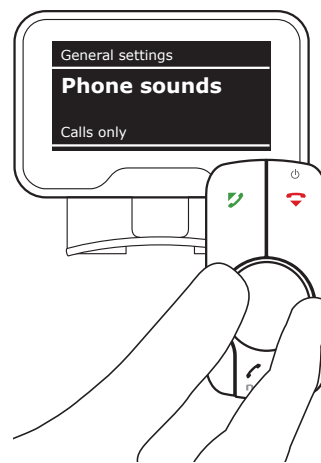
Turn  to select General settings, and press  to confirm.


Go to Phone sounds



Turn  to select Phone sounds, and press  to confirm.

Select phone sounds



Turn  to select setting, and press  to confirm.

General settings

[_read more](#)

Welcome >

Operation >

Getting started >

Call functions >

In-call functions >

Music >

Settings >

Care >

Support >

Safety & disposal >

Certification & safety approvals >

Glossary >

Index >

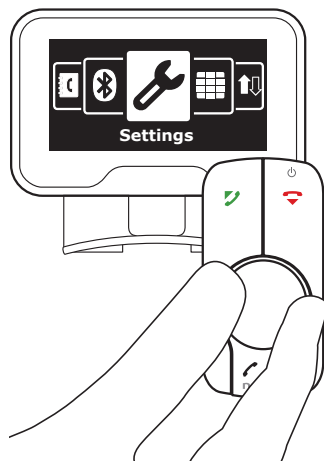
Back <





Voice mail number

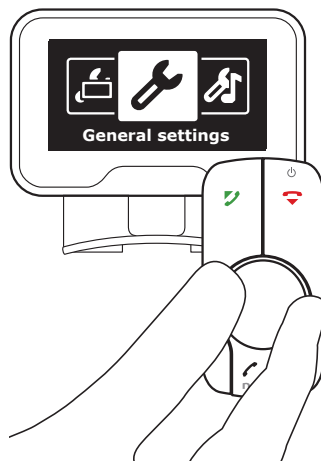
If your service provider offers a voice mail service, you can enter the number of this voice mail in your car kit settings. VIP number 1 will automatically be assigned to this number.



Go to Settings



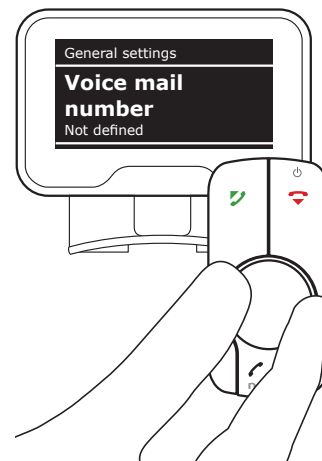
Enter the menu list, turn  to select Settings, and press  to confirm.



Go to General settings



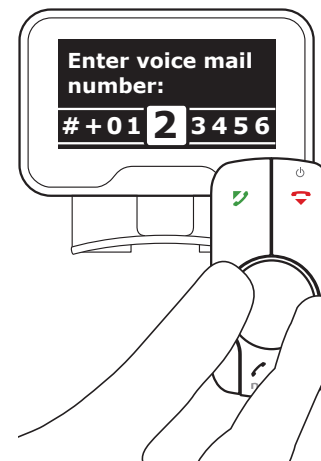
Turn  to select General settings, and press  to confirm.



Go to Voice mail number



Turn  to select Voice mail number, and press  to confirm.

Enter voice mail number



Alternately turn and press  to enter the number, and press  to confirm.

Call Voice mail
[_read more](#)

General settings
[_read more](#)

Welcome >

Operation >

Getting started >

Call functions >

In-call functions >

Music >

Settings >

Care >

Support >

Safety & disposal >

Certification & safety approvals >

Glossary >

Index >

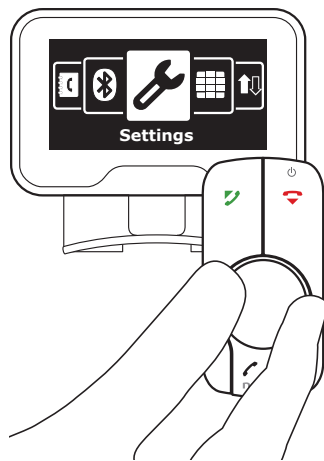
Back <



Service info

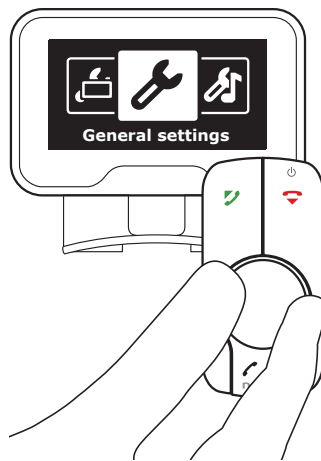
If you need information about **TheTrulyOne** for service purposes, you will find it in the Settings menu.

Go to Settings



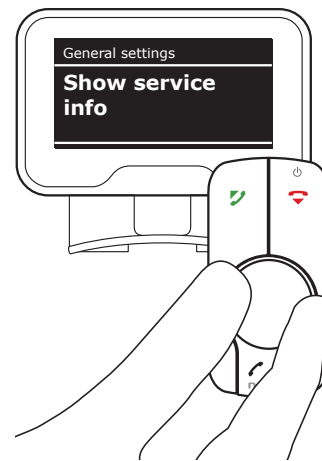
Enter the menu list, turn ⌚ to select Settings, and press ⌚ to confirm.

Go to General settings



Turn ⌚ to select General settings, and press ⌚ to confirm.

Go to Show service info



Turn ⌚ to select Show service info, and press ⌚ to confirm.

Service info screen



General settings
[_read more](#)

- Welcome >
- Operation >
- Getting started >
- Call functions >
- In-call functions >
- Music >
- Settings** >
- Care >
- Support >
- Safety & disposal >
- Certification & safety approvals >
- Glossary >
- Index >

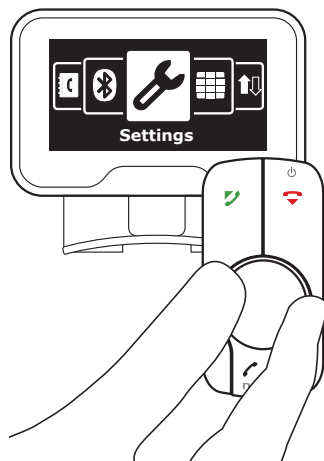
Back <



Factory settings

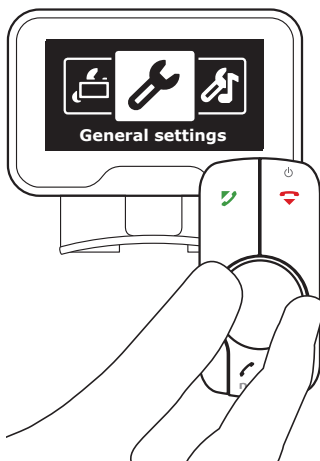
If you need to delete all your personal settings, including the list of connected devices, you can restore factory settings. **TheTrulyOne** will then restart and the settings will return to the original factory settings.

Go to Settings



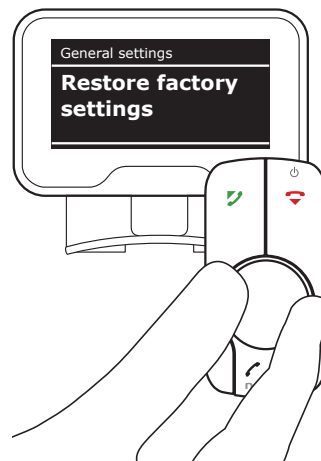
Enter the menu list, turn ⌚ to select Settings, and press ⌚ to confirm.

Go to General settings



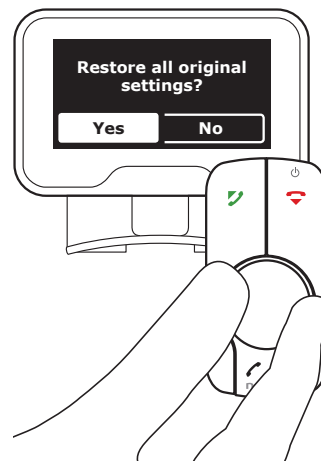
Turn ⌚ to select General settings, and press ⌚ to confirm.

Go to Restore factory settings



Turn ⌚ to select Restore factory settings, and press ⌚ to confirm.

Restore factory settings



Turn ⌚ to select Yes, and press ⌚ to confirm.

General settings

[_read more](#)

Welcome >

Operation >

Getting started >

Call functions >

In-call functions >

Music >

Settings >

Care >

Support >

Safety & disposal >

Certification & safety approvals >

Glossary >

Index >

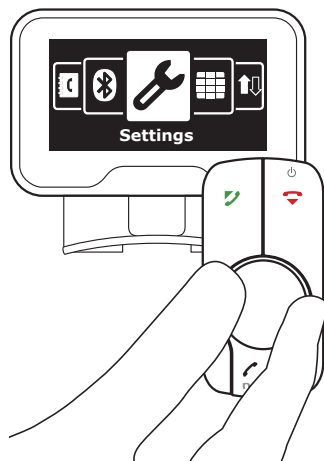
Back <



Audio test

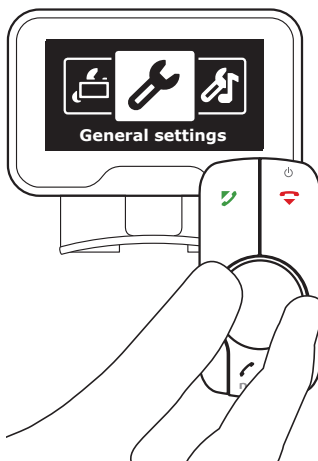
If you want to test the audio installation to see if **TheTrulyOne** is installed properly or for troubleshooting, you can do it through the Settings menu.

Go to Settings



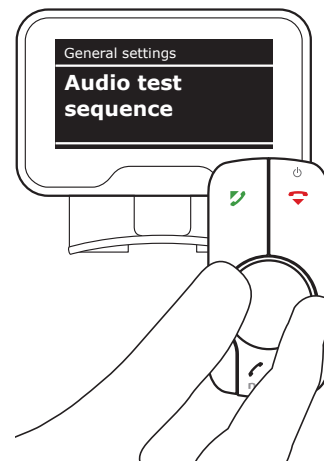
Enter the menu list, turn ⌚ to select Settings, and press ⌚ to confirm.

Go to General settings



Turn ⌚ to select General settings, and press ⌚ to confirm.

Go to Audio test sequence



Turn ⌚ to select Audio test sequence, and press ⌚ to perform the test.

General settings
[_read more](#)

Welcome >

Operation >

Getting started >

Call functions >

In-call functions >

Music >

Settings >

Care >

Support >

Safety & disposal >

Certification & safety approvals >

Glossary >

Index >

Back <

Display settings

Welcome >

Operation >

Getting started >

Call functions >

In-call functions >

Music >

Settings >

Care >

Support >

Safety & disposal >

Certification &
safety approvals >

Glossary >

Index >

Back <

Brightness
[_read more](#)

Name sorting
[_read more](#)

Colour
[_read more](#)

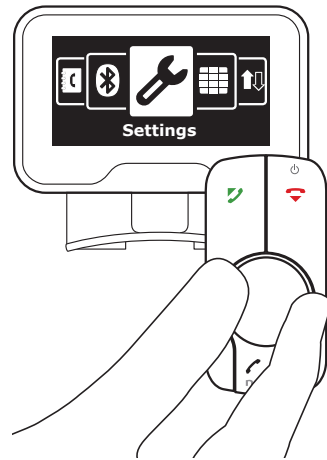
**Turn
direction**
[_read more](#)



Brightness

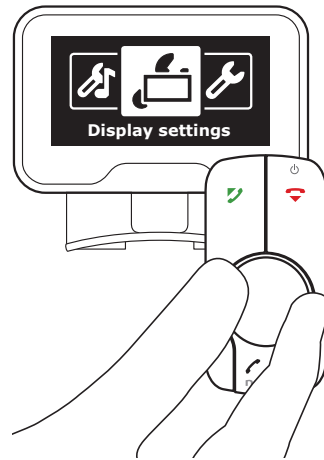
To ensure optimal visual performance at any time of day, you can very easily adjust the brightness of your car kit display.

Go to Settings



Enter the menu list, turn ⌚ to select Settings, and press ⌚ to confirm.

Go to Display settings



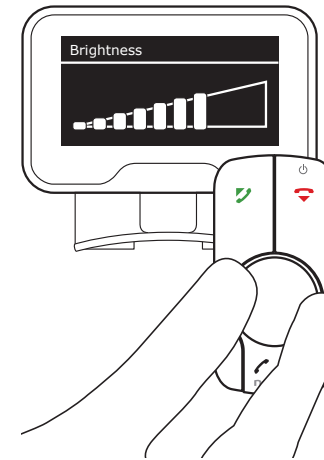
Turn ⌚ to select Display settings, and press ⌚ to confirm.

Go to Brightness



Turn ⌚ to select Brightness, and press ⌚ to confirm.

Select level of brightness



Turn ⌚ to select level of brightness, and press ⌚ to save the new setting.

Display settings
[_read more](#)

Welcome >

Operation >

Getting started >

Call functions >

In-call functions >

Music >

Settings >

Care >

Support >

Safety & disposal >

Certification & safety approvals >

Glossary >

Index >

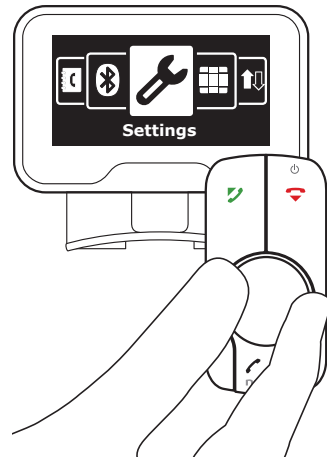
Back <



Name sorting

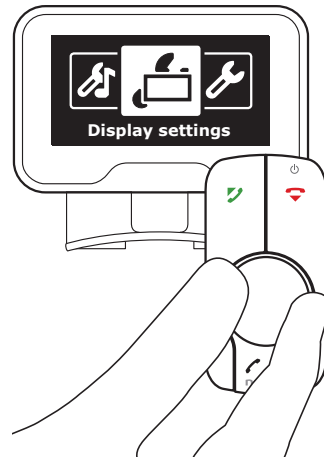
With **TheTrulyOne** you can choose if you want your contacts sorted by first or last name.

Go to Settings



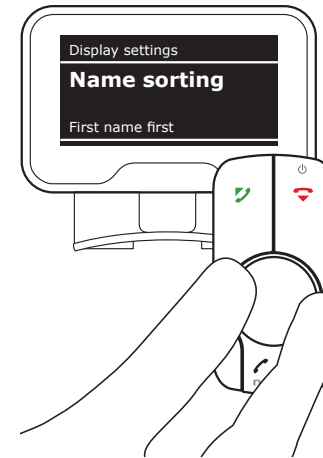
Enter the menu list, turn ⌚ to select Settings, and press ⌚ to confirm.

Go to Display settings



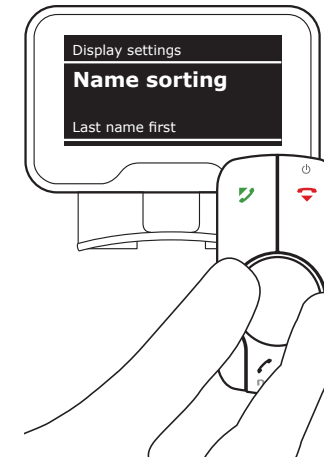
Turn ⌚ to select Display settings, and press ⌚ to confirm.

Go to Name sorting



Turn ⌚ to select Name sorting, and press ⌚ to confirm.

Sort names



Turn ⌚ to select order, and press ⌚ to save the new setting.

Display settings

[_read more](#)

Welcome >

Operation >

Getting started >

Call functions >

In-call functions >

Music >

Settings >

Care >

Support >

Safety & disposal >

Certification & safety approvals >

Glossary >

Index >

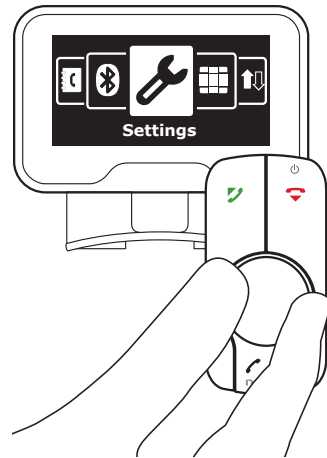
Back <



Colour

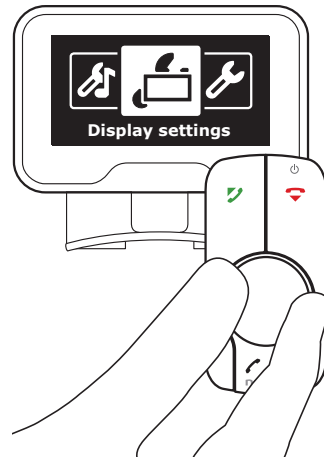
With **TheTrulyOne** you can adjust the colour of the display to fit your personal taste.

Go to Settings



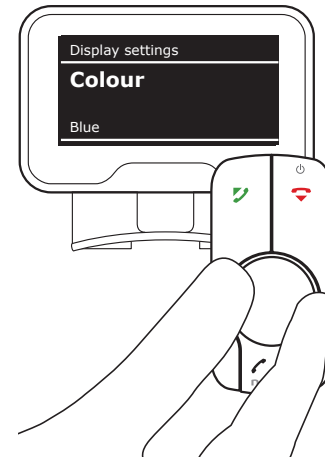
Enter the menu list, turn ⌚ to select Settings, and press ⌚ to confirm.

Go to Display settings



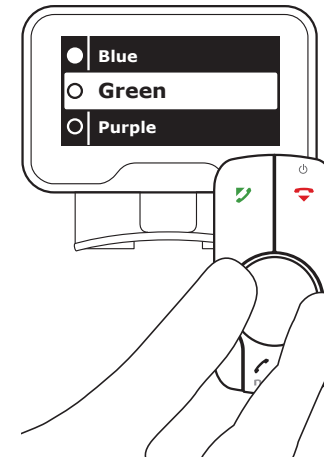
Turn ⌚ to select Display settings, and press ⌚ to confirm.

Go to Colour



Turn ⌚ to select Colour, and press ⌚ to confirm.

Select colour



Turn ⌚ to select colour, and press ⌚ to save the new setting.

Display settings

[_read more](#)

Welcome >

Operation >

Getting started >

Call functions >

In-call functions >

Music >

Settings >

Care >

Support >

Safety & disposal >

Certification & safety approvals >

Glossary >

Index >

Back <

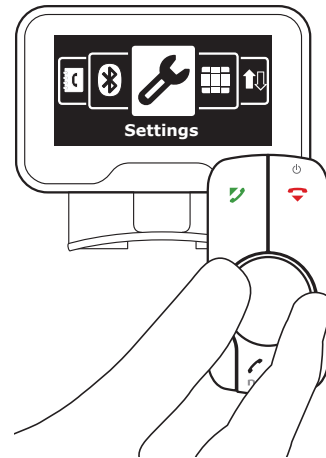


Turn direction

With **TheTrulyOne** you can customize the remote control by adjusting the turning direction of the wheel to fit your personal preferences.

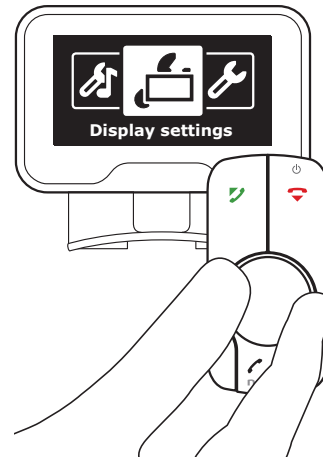
Tip
By default, turning right selects the next item on a list.

Go to Settings



Enter the menu list, turn ⌚ to select Settings, and press ⌚ to confirm.

Go to Display settings



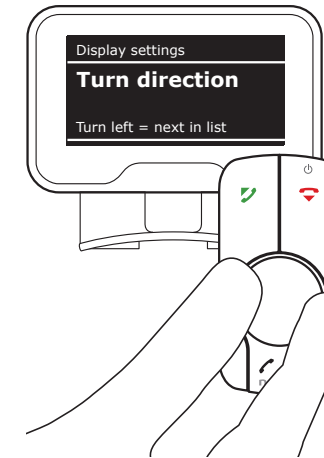
Turn ⌚ to select Display settings, and press ⌚ to confirm.

Go to Turn direction



Turn ⌚ to select Turn direction, and press ⌚ to confirm.

Select turn direction



Turn ⌚ to select turn direction, and press ⌚ to save the new setting.

Display settings
[_read more](#)

- Welcome >
- Operation >
- Getting started >
- Call functions >
- In-call functions >
- Music >
- Settings** >
- Care >
- Support >
- Safety & disposal >
- Certification & safety approvals >
- Glossary >
- Index >

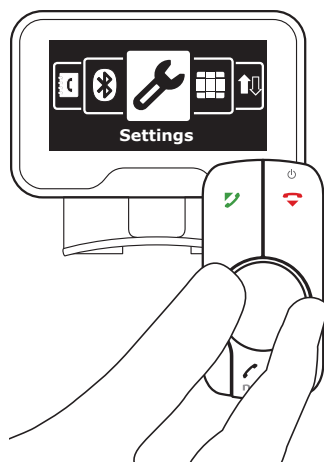
Back <





Music settings

For the optimal audio experience with **TheTrulyOne**, you can customize the music settings to support your favourite music. You can select between default, bass booster, classic, jazz, pop and rock.



Go to Settings



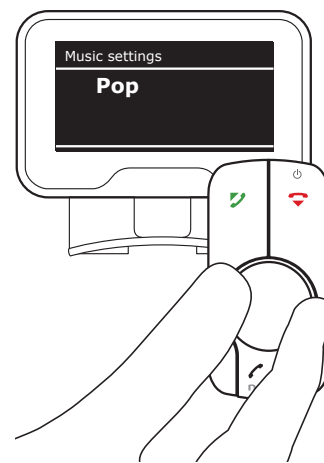
Enter the menu list, turn  to select Settings, and press  to confirm.



Go to Music settings



Turn  to select Music settings, and press  to confirm.

Select music setting



Turn  to select music setting, and press  to save the new setting.

- Welcome >
- Operation >
- Getting started >
- Call functions >
- In-call functions >
- Music >
- Settings** >
- Care >
- Support >
- Safety & disposal >
- Certification & safety approvals >
- Glossary >
- Index >

Back <

Welcome	➤
Operation	➤
Getting started	➤
Call functions	➤
In-call functions	➤
Music	➤
Settings	➤
Care	➤
Support	➤
Safety & disposal	➤
Certification & safety approvals	➤
Glossary	➤
Index	➤

Care

- Make sure that the power is turned off, when not in use.
- Handle your car kit with care. – Do not knock it or expose it to extreme temperatures, heavy dust, dirt, moisture or any kind of liquid.
- Dispose of all product parts in accordance with local standards and regulations to spare the environment and promote sustainability.

Support

Go through the list of suggestions below if you experience any inconvenience with **TheTrulyOne Universal Bluetooth Car Kit**.

- **If your phone does not connect automatically when you turn the ignition key:**
Go to the Bluetooth menu of your phone and set **TheTrulyOne** as authorized or trusted device to allow automatic connections without user confirmation.
- **If you do not hear a ringing tone:**
Please make sure that your phone is not in silent mode.
- **If the person on the other side complains about the audio quality:**
Check that the microphone is pointing towards your mouth.
- **If you have problems using the voice dial:**
TheTrulyOne provides one-click access to the voice recognition functions of your phone. Please check the user

guide of your phone regarding its voice recognition features. If you do not hear a tone, please try the feature without driving and look at the phone display to determine the recognition window.

- **If you want to update the software of your car kit?**
Go to www.novero.com and install the Novero SW updater. Please install it on a PC and then connect **TheTrulyOne** with a USB cable through the micro-USB connector on the remote control.
- **If you want to get help, if you don't find an answer for your question?**
Please go to www.novero.com and look for help to your problem on the WEB. And if you wish to call our helpline, you will find the number for your country. Please be prepared to provide the model and the SW version of your phone, as this information will be helpful to identify the root cause and a solution to the problem.

Technical specifications
[_read more](#)

Welcome	➤
Operation	➤
Getting started	➤
Call functions	➤
In-call functions	➤
Music	➤
Settings	➤
Care	➤
Support	➤
Safety & disposal	➤
Certification & safety approvals	➤
Glossary	➤
Index	➤

Technical specifications

- Bluetooth V2.0 + EDR, Handsfree Profile (HFP) V1.5, Advanced Audio Distribution Profile (A2DP) V1.2, Audio Video Remote Control Profile (AVRCP) V1.3, Phonebook Access Profile (PBAP) V1.0
- Monochrome Graphics Display with 128x64 pixel
- Adjustable directional microphone
- DSP with echo cancellation and noise reduction for full duplex communications
- Stereo Amplifier, 20Hz ... 20KHz, max. output power 4 x 2.5W@8Ω / 4 x 4.6W@4Ω / 4 x 7.2W@2Ω
- Internal mute relays and system cable with DIN/ISO connectors
- USB 2.0 Full Speed

Support
[_read more](#)

Welcome >

Operation >

Getting started >

Call functions >

In-call functions >

Music >

Settings >

Care >

Support >

Safety & disposal >

Certification & safety approvals >

Glossary >

Index >

Back <

Safety & disposal

1. Installation

- Always have a qualified professional handle the installation or any repairs on your car kit. Please refer to the installation guide for more information.
- Make sure that the car kit components are fastened in places where
 - 1) they are not close to an airbag or area where they could harm you in case of a collision
 - 2) they are in arm's reach from the driver's seat
 - 3) they do not impair the operation of the vehicle.

2. Using TheTrulyOne

- Always be cautious about using your car kit or phone while engaging in any activity that requires your full attention. Turn off your car kit and phone to keep you from being distracted and avoid accidents.
- Always focus on road safety and obey all local laws while operating a motor vehicle. Do not use your car kit if it, in any way, interferes with your driving.
- Always switch off your car kit if it may otherwise cause interference or danger. Please respect official recommendations and restrictions.
- If you use a pacemaker, hearing aid or other electronic medical device, please consult your physician before using the car kit.
- Never try to dismantle the product yourself. None of the internal components can be replaced or repaired by users. – Only authorized dealers or service centres may open the product. If any parts of your product require replacement for any reason, including normal wear and tear or breakage, contact your dealer.

3. Keep out of reach of children

- The plastic bags, which this product and its parts are wrapped in, are not toys for children. The bags themselves or the many small parts they contain may cause choking if ingested.

4. ACA TSoz8 – Ignition of flammable atmospheres

- Do not use your car kit in environments with risk of ignition of flammable gases.

5. Disposing of TheTrulyOne

- Dispose of all product parts in accordance with local regulations. If in doubt, please consult your local authorities.

- The product must be taken to separate collection at the product end-of-life. Do not dispose components of this product as unsorted municipal waste.

6. Warranty

- novero offers a limited manufacturer's warranty of 12 months from the date of purchase. In some cases / countries the warranty time can be extended to 24 months. Please visit www.novero.com to find more details for warranty extension and warranty return options.

Reproduction, transfer, distribution or storage of part or all of the contents in this document in any form without the prior written permission of novero is prohibited. novero® is a registered trademark. Other product and company names mentioned herein may be trade marks or trade names of their respective owners.

novero products are trademarks or registered trademarks of novero GmbH.

©2009 novero
All rights reserved

For more information, please go to www.novero.com

Welcome >

Operation >

Getting started >

Call functions >

In-call functions >

Music >

Settings >

Care >

Support >

Safety & disposal >

**Certification &
safety approvals >**

Glossary >

Index >

Back <

Certification & safety approvals

Declaration of Conformity

novero GmbH hereby declares that this NCUN-4 product is in compliance with the essential requirements and other relevant provisions of Directive 1999/5/EC. The Product is in conformity with the limits defined in Directive 2004/104/EC (amending Directives 72/245/EC), Annex I, paragraph 6.5, 6.6, 6.8 and 6.9. A copy of the Declaration of Conformity can be found at www.novero.com/declaration_of_conformity

CE 0560

FCC/Industry Canada notice

This device complies with Part 15 of the FCC Rules. Operation is subject to the following two conditions:

1. This device may not cause harmful interference; and
2. This device must accept any interference received, including interference that may cause undesired operation.

FCC ID: WJLNCUN-4
IC: 7847A-NCUN4

NOTE: FCC Radiation Exposure Statement: This equipment complies with FCC radiation exposure limits set forth for an uncontrolled environment. End users must follow the specific operating instructions for satisfying exposure compliance. This transmitter must not be co-located or operating in conjunction with any other antenna or transmitter.

NOTE: Changes or modifications not expressly approved by novero could void the user's authority to operate the equipment.

Bluetooth® is a registered trademark of Bluetooth SIG, Inc.

The Bluetooth car kit supports Bluetooth Specification 2.0 with EDR, Handsfree Profile 1.5, Advanced Audio Distribution Profile (A2DP) V1.2, Audio Video Remote Control Profile (AVRCP) V1.3 and Phonebook Access Profile (PBAP) V1.0

Display Unit = NDUN-1
Remote Control = NIDE-1
Microphone = NMIC-1
System Cable = NCAB-2

The availability of particular products may vary by region. Please check with your novero dealer nearest you. Unauthorized changes or modifications to this device may void the user's authority to operate the equipment.

Export controls: This device may contain commodities, technology or software subject to export laws and regulations from the US and other countries. Diversion contrary to law is prohibited.

Welcome	➤
Operation	➤
Getting started	➤
Call functions	➤
In-call functions	➤
Music	➤
Settings	➤
Care	➤
Support	➤
Safety & disposal	➤
Certification & safety approvals	➤
Glossary	➤
Index	➤

Glossary

Bluetooth is a radio technology that connects devices, such as mobile phones and car kits, without wires or cords over a short distance (approx. 10 meters / 33 feet). Bluetooth is safe to use and secure, too. Once two Bluetooth devices have been paired, no one can listen in and no other Bluetooth devices can interfere without authorisation. Get more information at www.bluetooth.com

Bluetooth profiles are the different ways that Bluetooth devices communicate with other devices. Bluetooth phones support the car kit profile, the handsfree profile or both. In order to support a certain profile, a phone manufacturer must implement certain mandatory features within the software of the phone.

Call history is a record of outgoing, incoming and missed calls.

Code or PIN is the code required to pair a Bluetooth device (e.g. a mobile phone) with your car kit.

Device refers to both a telephone or music player which can be paired with **TheTrulyOne**.

DTMF (Dual Tone Multi-Frequency) tones are the audio signals that are used to communicate digits 0–9 as well as the * and # keys when dialling from a touch-tone device like **TheTrulyOne**.

Mode is the state **TheTrulyOne** is in, either telephone or music. The functions and options vary according to the state **TheTrulyOne** is in.

Multiple call is a function which enables you to receive and handle more than one incoming call.

Pairing creates a unique and encrypted connection between two Bluetooth devices. Bluetooth devices will not work together if they have not been paired.

Standby is the state where your car kit is turned on, paired and ready for outgoing or incoming calls. When a call is ended, the display automatically returns to the standby state.

VIPs is a status which can be applied to certain contacts and allows you to speed-dial (dial the number by pressing fewer numbers) these contacts.

Voice dial enables you to dial a contact through speech recognition (saying the contact name aloud). May not be supported by all mobile phones.

Voice mail is voice messaging – a service which manages telephone messages. May not be supported by all mobile phone operators.

- Welcome >
- Operation >
- Getting started >
- Call functions >
- In-call functions >
- Music >
- Settings >
- Care >
- Support >
- Safety & disposal >
- Certification & safety approvals >
- Glossary >
- Index >**

Back <

Index

Basic call functions

[_go to page](#)

Box content

[_go to page](#)

Call from phonebook

[_go to page](#)

Call functions

[_go to page](#)

Call history

[_go to page](#)

Call VIPs

[_go to page](#)

Call voice mail

[_go to page](#)

Care

[_go to page](#)

Certification and safety approvals

[_go to page](#)

Connect new device

[_go to page](#)

Dial number

[_go to page](#)

Display settings

[_go to page](#)

Brightness

[_go to page](#)

Colour

[_go to page](#)

Name sorting

[_go to page](#)

Turn direction

[_go to page](#)

General settings

[_go to page](#)

Audio test

[_go to page](#)

Factory settings

[_go to page](#)

Language

[_go to page](#)

Phone sounds

[_go to page](#)

Service info

[_go to page](#)

VIPs

[_go to page](#)

Voice mail number

[_go to page](#)

Getting started

[_go to page](#)

Glossary

[_go to page](#)

Handle multiple calls

[_go to page](#)

End active call

[_go to page](#)

Put active call on hold

[_go to page](#)

Reject new call

[_go to page](#)

In-call functions

[_go to page](#)

Installation

[_go to page](#)

Menu overview

[_go to page](#)

Music

[_go to page](#)

Music settings

[_go to page](#)

Mute / unmute microphone

[_go to page](#)

Operation

[_go to page](#)

Safety and disposal

[_go to page](#)

Send digits

[_go to page](#)

Settings

[_go to page](#)

Support

[_go to page](#)

Switch / delete device

[_go to page](#)

Switch mode

[_go to page](#)

Technical specifications

[_go to page](#)

Transfer call

[_go to page](#)

Turn power on / off

[_go to page](#)

Voice-dial

[_go to page](#)

Welcome

[_go to page](#)