

User's Manual

MONIT Smart Baby Monitor

www.goodmonit.com

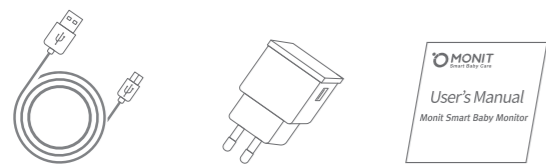
Thank you for purchasing MONIT. Fully read the user's manual before you start using MONIT and follow its instructions.

Product Components

MONIT Diaper Sensor / MONIT Air Quality Monitor Hub / Diaper Cradle / Micro USB Cable / Charger / User's Manual

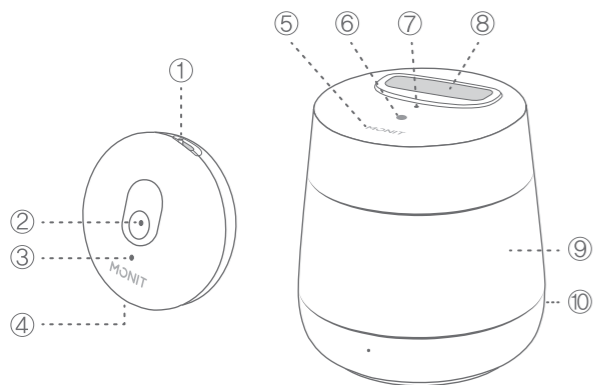


MONIT Diaper Sensor MONIT Air Quality Monitor Hub Diaper Cradle



Micro USB Cable Charger User's Manual

Product Parts



- ① Power Switch ② Sensing Hole ③ Status LED
- ④ USB Charger Terminal ⑤ Touch Button
- ⑥ Status LED ⑦ Sensing Hole ⑧ Port for Sensor
- ⑨ Nursing Lamp Lighting Area ⑩ USB Charger Terminal

Product Function

MONIT Diaper Sensor

| Function | Notification | Action |
|-------------------------|--|--|
| Sensing urine and feces | Clean / Urine / Feces Farts / Abnormality | Notification sent to the App connected via Bluetooth |

MONIT Air Quality Monitor Hub

| Function | Notification | Action |
|----------------------------|--|---|
| Interior Temperature Check | °C / °F | Wireless network / Notification sent to the App connected via Bluetooth |
| Interior Humidity Check | % | |
| VOC Gas Check | Good / Average / Bad / Very Bad (※Activates as soon as the MONIT Diaper Sensor is inserted) | |
| Nursing Lamp | Brightness: Minimal / Medium / Maximum | |

Getting Started

- Fully charge your battery before using the MONIT Sensor for the first time.
- Search for "MONIT" on Google Play Store or iOS App Store and download the application.



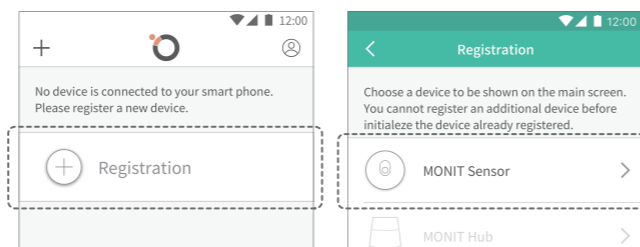
- Register and Log-in after turning on the MONIT App.
- Install the MONIT Sensor and the Air Quality Monitor Hub using the following instructions.

Settings

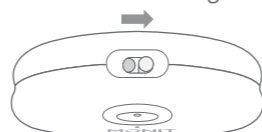
Please make sure your Internet connection is good before starting the initial setup process.

MONIT Diaper Sensor

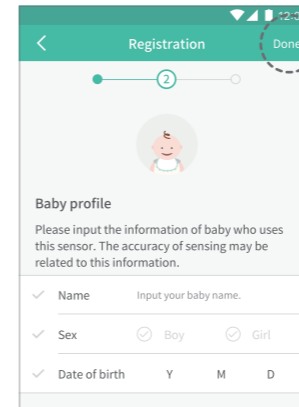
- Check the Bluetooth status on your Smart Phone.
- Press "Register Device" on the main screen, and select "MONIT Sensor"



- Turn on the power switch on the side of the Sensor, and make sure the blue LED light on the front is blinking.



- Press "Start Connection" button on the app. Then the Sensor will initiate the connection.
- Register your baby's information. The accuracy of the sensor may depend on the information you provide.



- Once you finish registering your baby's information, the Sensor registration is complete. Then press the "Done" button in the upper right corner and your Sensor will be ready for use.

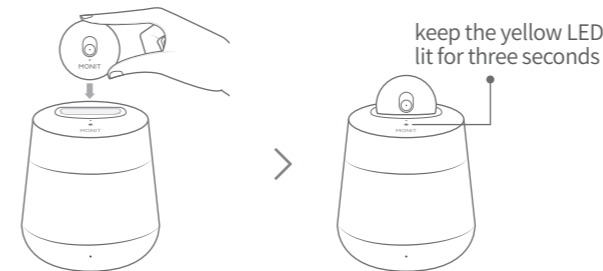
MONIT Air Quality Monitor Hub

- You must connect the Sensor prior to connecting the Hub. Follow the instructions above to connect the Sensor.
- Follow the same steps as the Sensor. Press "Register Device" and select "Hub"
- Connect the Hub to its power source and check if the blue LED light is blinking.

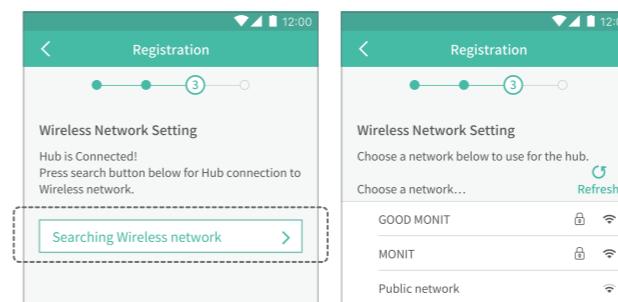


Connect to power

- Insert the connected Sensor to the Port of the Sensor on the top of the Hub. The Hub connects through the Sensor when you press "Start Connection" button.



- Once the Sensor is connected to the Hub, the yellow LED light on the top of the Hub will be on for three seconds.
- Search and select the proper wireless network to connect the Hub to the server. If the network is password protected enter the password to connect the Hub to the network.



- You will see the registration complete page when the Hub is connected to the network. Press the "Done" button on the upper right side and your Hub will be ready for use. Upon the completion of registration, the LED light on the top of the Hub will show a color to display the air quality.

※ Q: What do the colors of the LED light signify?

- A: Blinking blue: connection in progress
Yellow: confirmed connection between the Sensor and the Hub
Blue: good air quality
Green: average air quality

User's Guide

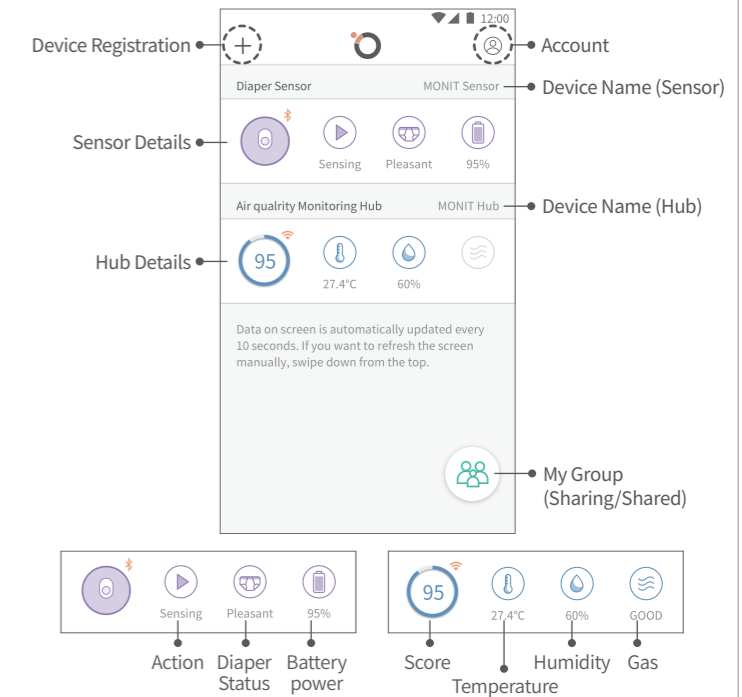
- In case of an app force stop, you may not receive push notifications.
- This device is not waterproof. When wet, it may cause device failure. (Do not use it on cloth diapers.)

1. How to charge the MONIT Sensor

Option① : Insert your Sensor in the Port for the Sensor on the top of the Hub. Once it is inserted, the Sensor will automatically charge.

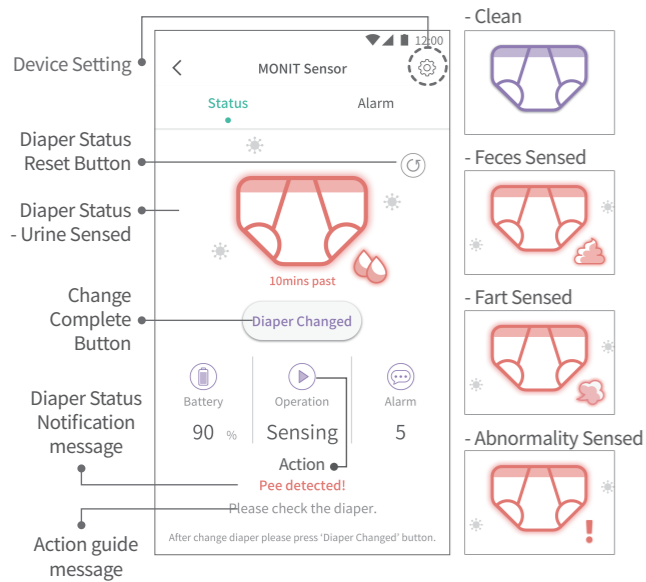
Option② : Plug the cable from the USB Charger Terminal into the Sensor.

- This is the screen shown on your app when all devices are connected.



| Mark | Connection Status |
|------|---|
| | The Sensor is connected directly to the smartphone via Bluetooth. Connection may be cut off when the distance between the Sensor and the smartphone increases. |
| | The Sensor is connected to the Hub via Bluetooth. The device status is transmitted from the Hub to the smartphone over a wireless network. Connection will remain even when the distance between the Sensor and the smartphone increases as the Sensor will automatically connect with the Hub. |

3. Checking the information on the MONIT Diaper Sensor



① Change Complete Button

Press the “Done” button after changing the diaper. It will increase the accuracy of your next sensing.

② Sensor Action Status

- Sensing : Sensing urine and feces status
- Charging : Connected to either Hub or charging cable. Charging is in process.

③ Number of Notifications

It displays how many notifications are made for the day.

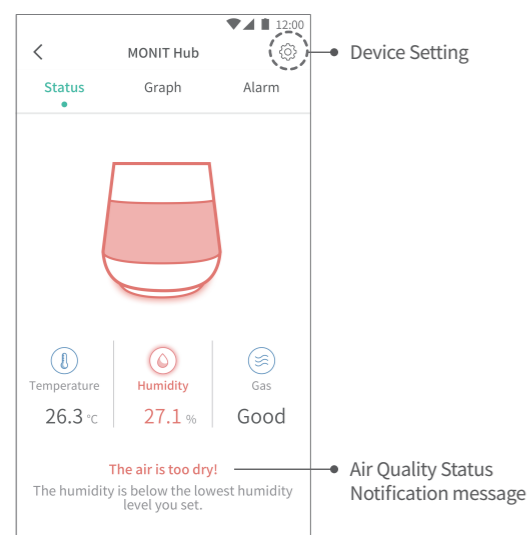
④ Abnormality Status

Sensor has been exposed to an abnormal environment. Check the diaper and re-start the Sensor.

⑤ Diaper Status Reset Button

The diaper status may be reset to the “Clean” screen.

4. Checking the information on the MONIT Air Quality Monitor Hub



① VOC Gas

VOC gas can be monitored once the Sensor is connected to the Hub. If the Sensor is not attached to the Hub, it monitors only the temperature and humidity.

※ Q: VOC Gas

A : VOC gases are the Volatile Organic Compounds found in the air. These are released by toys and the finishing materials of interior walls. Over exposure to VOC can cause skin diseases and respiratory problems.

5. Adhere the Sensor to the Diaper

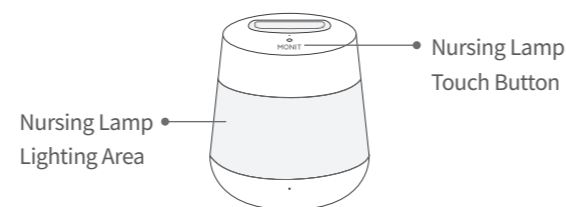
- ① The Diaper Sensor must be inserted into the Diaper Cradle so that it can adhere to the diaper.
- ② Make sure the MONIT logo on the sensor faces inside the diaper cradle.



- ③ Swivel the sensor slightly from side to side to attach it more strongly. When the Velcro's hooks are firmly interlocked with the diaper, the sensor will be more firmly connected. (The Diaper Cradle is compatible with most of disposable diapers.)

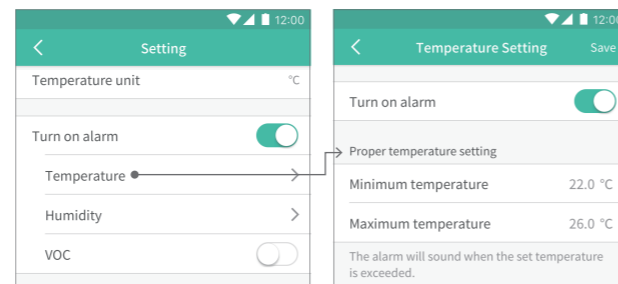
6. Using the Hub as Nursing Lamp

The MONIT Logo located at the top of the Hub is a touch button. - Brightness Control (3 levels) : Short touch on the MONIT logo.



6. Setting optimal temperature and humidity

The MONIT Air Quality Monitoring Hub will send you an alert when the temperature and humidity are not within set parameters.



8. Other guidance

If you need further information regarding the registration and use of our product, please visit our website or scan the QR code on the bottom.

- Creating a Group (with sharing feature)
- Set the Device Name
- Change the Hub network
- Set the device push notifications
- Update the device firmware <http://support.goodmonit.com>
- Set LED on/off time of the Hub



Product Warranty Period and Policy

- 1-year warranty
- Warranty service is available if the product is found defective within the product warranty period. Please attach the proof of purchase (to check the purchase date)
- Devices with deficiencies due to user's improper handling, including but not limited to fall, submergence, and disassembly of the product, will not be eligible for replacement.
- Opened boxes without a legitimate reason cannot be refunded.
- Do not attempt to disassemble or repair the product. Altered products will not be eligible for warranty services.

Size and Specification

MONIT Diaper Sensor

| | |
|------------------------|--------------------------------|
| Power Supply | DC 5V 150mA (Micro USB) |
| Communication | Bluetooth 5.0 |
| Battery | Li - Poly DC 3.7V 170mAh |
| Charging Time | 3hours |
| Operating Temperature | -10 ~ 50 °C |
| Support Platform | Android 5.0 & iOS 9.0 or above |
| Size | D40.6 x 10.3 (mm) |
| Weight | 12 g |
| Recommended age of use | 0 to 3 years |

MONIT Air Quality Monitoring Hub

| | |
|------------------------|--|
| Power Supply | DC 5V 1500mA (Micro USB) |
| Communication | Bluetooth 4.2 Wireless network: 802.11b/g/n |
| Power | 7.5 W |
| Operating Temperature | -10 ~ 50 °C |
| Color Temperature | 3000K |
| Support Platform | Android 5.0 & iOS 9.0 or above |
| Size | D93 x 100.4 (mm) |
| Weight | 181 g |
| Recommended age of use | 0 to 3 years |

Safety Precautions

The following information is for your safety and the safety of those around you. To prevent any property loss, make sure to fully read and follow the following instructions.

Warning

- Do not attempt to disassemble or repair the product. Altered products will not be eligible for warranty services.
- Keep the product away from humidity and dust.
- Prevent falls, water immersion and shock. It can cause damage to the electrical board.
- Do not place or use the product in direct sunlight or high temperatures. It can cause exterior deformation and malfunction.
- In case of water contact be careful of electric shock. Immediately remove the product from its power supply. This product is for indoor use and is not water and/or humidity proof.
- Do not use a high-speed charger. It may cause abnormal operation and/or burden on the product.
- Do not let infants or pets chew or lick the product.
- Keep cables away from infant's reach. Children have STRANGLED in cords.
- Check the appropriate operating temperature of the product (located in the size and specification section). Higher or lower temperatures can cause breakdowns or battery life problems.
- This device is recommended for infants aged 0 to 3. To use it for toddlers 3 years or older, caution is required, such as impact and disassembly.

Risk of Fire, Explosion and burns.

- Do not expose the product to shock or damage.
- Use only the specified charger to recharge the product.
- Do not let conductive materials near the charger terminal.

About the AC adapter

- Use only the MONIT AC adapter. Using unapproved adapters may cause overheating, resulting in fire and electric shock.
- Do not disassemble, alter or touch the AC with wet hands. This can result in electric shock, malfunction and/or fire.
- Do not pull or place heavy items on top of the AC adapter cable. This can result in electric shock and/or fire.
- Use only the specified power voltage on the AC adapter. Doing otherwise may result in electric shock and/or fire.

Product Certifications

- Product Name : Monit Diaper Sensor, Monit Air quality monitor Hub
- FCC ID : (Sensor) 2AQNN-SBM-S100U
(Hub) 2AQNN-SBM-H100U
- Model : SBM-S100U , SBM-H100U
- Manufacturer | Country of Origin : MONIT Corp. | Republic of Korea
- This device cannot be used in human safety related services due to its risk of interference
- This product complies with household use (rated B) level electromagnetic wave limits and it may be used in all regions.



FCC Warning Statement

FCC Part 15.19
This device complies with part 15 of the FCC Rules. Operation is subject to the following two conditions:
(1) this device may not cause harmful interference, and (2) this device must accept any interference received, including interference that may cause undesired operation.

FCC Part 15.21
Any changes or modifications (including the antennas) to this device that are not expressly approved by the manufacturer may void the user's authority to operate the equipment.

FCC Radiation Exposure Statement

This equipment complies with FCC Radiation exposure limits set forth for an uncontrolled environment.
This device and its antenna must not be co-located or operating in conjunction with any other antenna or transmitter.
This equipment should be installed and operated with a minimum distance of 10cm between the radiator and your body.

Declaration of Conformity

MONIT Corp. declares that this device complies with the essential requirements and relevant provisions of Directive 2014/53/EU
Go to "support.goodmonit.com" to view the Declaration of Conformity

Before Requesting Customer Service

Before requesting customer service, read the following trouble shooting procedures.

It does not turn on.

- The product will not turn on when the battery is not charged. Make sure to fully charge your battery before use.

It stops in the middle of use.

- If the product stops or slows down during use, restart the device. If the condition continues attempt to reconnect the devices.

The alarm does not go off.

- If you are an iOS user, check to see if notifications for the MONIT App have been allowed. Settings > Notification > Select MONIT App > Allow Notifications

I can't find the device on the Bluetooth connection list.

- Make sure your product is on Bluetooth standby status.
- Search for devices after the product has been reset.
- Make sure the product and the device are within 10 meters of each other.

The Battery Life is shorter than before.

- Exposure to high and low temperature can cause battery life shortening.
- Batteries are consumables; therefore, their life shortens with use.

- The content of this user's manual can vary depending on the software versions.
- The design, specifications and service, etc. of the product are subject to change without prior notice to improve performance.
- The provided product components and available items sold separately are subject to change due to MONIT's circumstances.

A / S Inquiry

- support@goodmonit.com

Registered Trademark Rights

- Android is a trademark of Google Inc.
- iOS is a trademark of Apple Inc. and is registered in all countries including USA.
- Bluetooth® watermark and logo are property of Bluetooth SIG, Inc. MONIT Corp. is using these under authorization of the same company.