

# MONSTER

## iEZClick™ Wireless Remote Control

### 2-Piece RF Transmitter-Receiver System for iPod®

#### iEZClick™ Wireless Remote Control Features/Contents

- Easy-to-use, familiar iPod®-style button layout with tactile control
- Controls for Volume, Track, Hold, Previous and Next Playlists
- Wireless RF technology offers up to 30-foot range\*
- Operates through walls, doors, bags, jackets, etc.\*
- Convenient belt clip and wrist strap for on-the-go use
- Water-resistant design with rugged rubberized holder

\*Range determined by product specifications and other environmental variables

#### Remote Control of Your iPod

**THANK YOU** for purchasing Monster's iEZClick™ 2-piece RF Transmitter-Receiver System. Using wireless RF (radio frequency) technology, the iEZClick lets you control your iPod when it's buried in a pocket, bag, or jacket during travel, or when you're engaging in outdoor activities.

The iEZClick controls are large and widely spaced so you can easily control your iPod with gloves on or simply by touch without looking. The iEZClick RF signals can also travel through walls, floors and doors\* so you can remotely control your iPod from a different room or through backpacks, pockets, jackets, etc.\*

The Monster iEZClick can switch your iPod on and off, skip tracks, adjust volume, change playlist and pause and resume playback. The large center button (showing the Monster® "M" logo) is a multi-purpose control. With iEZClick, wireless remote control has never been easier or more effective.

\*Range determined by product specifications and other environmental variables

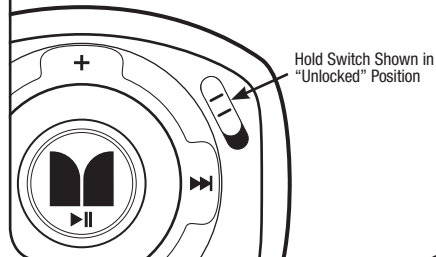
#### INSTRUCTIONS

##### Unlock Remote (Hold Switch)

Your new iEZClick Remote comes supplied with the battery pre-installed and the Hold switch on.

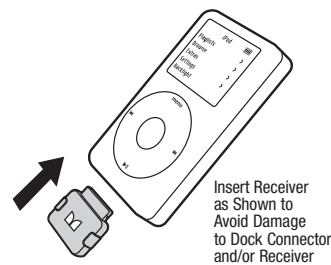
(Note: The iEZClick wireless receiver does not use a battery, as power is supplied from the iPod.)

- To begin use, slide the Hold switch on the iEZClick remote to hide the red-colored indicator under the Hold switch.



##### Connect the Wireless Receiver

- You can plug the iEZClick wireless receiver to your iPod docking connector while the iPod is on or off without any risk of damage.
- Make sure iPod power is on.



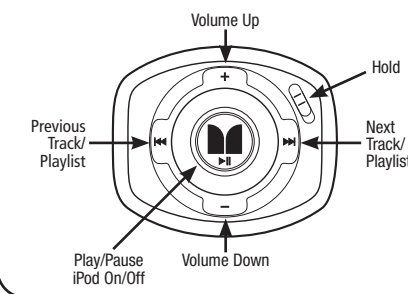
- Navigate to your first song of choice using your iPod controls. (Note: To begin using iEZClick, your iPod must already be in a playlist.)

##### To Turn iPod Power On or Off

- Press and hold the **II** button to turn iPod off.
- Press and hold the **II** button to turn iPod on.

##### To Play/Pause Music

- Press the center button briefly to begin playback.
- Press the center button briefly again. Playback will pause.



##### To Skip to Next/Previous Track

- Press the **II** or **II** button once briefly to skip a single track.

##### To Fast Forward/Rewind Track

- Press and hold the **II** or **II** button.

##### To Skip to Next/Previous Playlist

- Press the **II** button and the **II** button simultaneously to skip to Next Playlist.
- To skip to Previous Playlist, press the **II** button and the **II** button simultaneously.

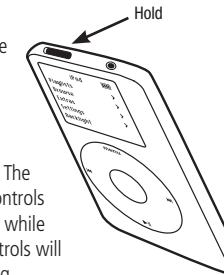
##### To Adjust Volume

- Press the **+** button to increase or the **-** button to decrease volume.

##### To Disable iPod Controls (iPod Hold)

When carrying your iPod in a pocket or purse, disabling its click wheel controls by activating the iPod's Hold switch function will prevent accidental button pushing. This ensures that only the iEZClick Remote can control the iPod.

- To activate Hold on the iPod, slide the Hold switch down to display the red-colored indicator under the Hold switch. The iPod's built-in controls will be disabled, while the iEZClick controls will continue working.



- Slide the Hold switch back to resume use of iPod controls.

#### MONSTER SAFETY TIP

Do not wear headphones or attempt to operate the iEZClick during potentially dangerous activities. Please be aware of your surroundings at all times.

We invite you to visit the Monsters at: [MonsterCable.com](http://MonsterCable.com)

**MONSTER**  
Get All the Performance You Paid For™

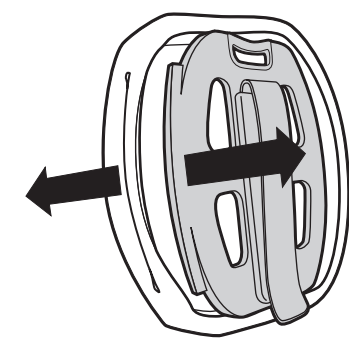
Monster Cable Products, Inc.  
455 Valley Drive Brisbane, CA 94005 USA  
1-877-800-8989

Engineered in the USA and manufactured for Monster to its quality specifications.  
Made in China.

rm 162822

##### To Detach Belt Clip

- Hold iEZClick sideways in both hands.
- Press one side of the clip free from iEZClick tab with both thumbs and pull outward.
- Reverse process to re-attach.

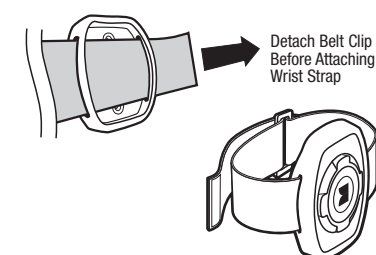


##### To Attach Wrist Strap

Your iEZClick Remote Control comes supplied with a wrist strap for convenient operation.

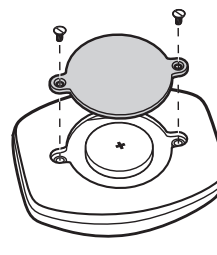
- Slide the wrist strap through the slots on the iEZClick casing as shown.
- Position the iEZClick Remote Control on your arm in a comfortable spot, and tighten the wrist strap.

(CAUTION: DO NOT OVERTIGHTEN! Setting the wrist strap too tight can cut off blood circulation.)



##### To Change Remote Battery

- Unscrew both screws on the iEZClick's battery compartment and remove the cover.
- Remove the button-size battery.
- Replace with a fresh CR2032 Lithium battery. Pay careful attention to polarity (the **+** and **-** sides of the battery). The remote will only work when properly oriented. Return the battery compartment cover to its usual position and screw in.

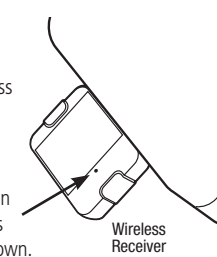


##### Interference from Other iEZClick Remotes

Your iEZClick remote and wireless receiver are designed to work together seamlessly. If you're experiencing interference or unwanted commands from other iEZClick remote users, the following should help resolve the problem:

##### Pairing

- Plug iEZClick wireless receiver into iPod dock connector.
- Insert end of paper clip into small hole in the iEZClick wireless receiver and hold down.
- Press and release any button on the iEZClick remote to activate pairing.
- Use remote normally and check if any unwanted interference or commands occur.



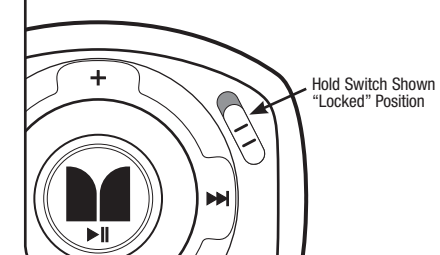
##### Un-Pairing

If you paired your iEZClick remote and wireless receiver due to interference, you can also un-pair them to return them to original factory settings if needed by doing the following:

- Plug iEZClick wireless receiver into iPod dock connector.
- Insert end of paper clip into small hole in the iEZClick wireless receiver and hold down for 10 seconds.
- DO NOT PRESS any button on the iEZClick remote during the 10 seconds.
- After 10 seconds, your iEZClick remote and receiver will have been restored to factory settings.

##### To Disable iEZClick Controls (Remote Hold)

- To activate Hold on the iEZClick, slide the Hold switch on the iEZClick remote to display the red-colored indicator under the Hold switch. The iEZClick's buttons will be disabled, while the iPod's click wheel controls will continue working.
- Slide the Hold switch back up to resume normal iEZClick control.



**FCC Notice:** This device complies with Part 15 of the FCC rules. Operation is subject to the following two conditions: (1) this device may not cause harmful interference, and (2) this device must accept any interference received, including interference that may cause undesired operation.

**Caution:** Changes or modifications not expressly approved by Monster Cable Products, Inc. may void the users authority to operate this device.

**Note:** This equipment has been tested and found to comply with the limits for a Class B digital device pursuant to Part 15 of the FCC rules. These limits are designed to provide reasonable protection against harmful interference in a residential installation. This equipment generates, uses, and can radiate radio frequency energy and, if not installed and used in accordance with the instructions, may cause harmful interference to radio communications. However, there is no guarantee that interference will not occur in a particular installation. If this equipment does cause harmful interference to radio or television reception, which can be determined by tuning the equipment off and on, the user is encouraged to try to correct the interference by one or more of the following measures:

- Reorient or relocate the receiving antenna
- Increase the separation between the equipment and receiver
- Connect the equipment into an outlet on a circuit different from that to which the receiver is connected
- Consult the dealer or an experienced radio/TV technician for help

FCC ID : RJE169213-00

#### LIMITED WARRANTY FOR CONSUMERS

##### United States

Monster Cable Products, Inc., 455 Valley Drive Brisbane, CA 94005 (415) 840-2000. ("Monster") extends You this Limited Warranty. Statutory or common law may provide You with additional rights or remedies, which shall not be affected by this Limited Warranty.

##### DEFINITIONS

**"Adequate Use"** means use of the Product (i) within a home or dwelling, (ii) for private (as opposed to commercial) purposes, (iii) in conformance with all applicable local, state or federal law, code or regulations (including without limitation building and/or electrical codes), (iv) in accordance with manufacturer recommendations and/or instructions in the materials and documentation that accompany the Product, (v) with proper electrical grounding.

**"Authorized Dealer"** means any distributor, re-seller or retailer that (i) was duly authorized to do business in the jurisdiction where it sold the Product to You, (ii) was permitted to sell You the Product under the laws of the

jurisdiction where You bought the Product, and (iii) sold You the Product new and in its original packaging.

**"Formal Warranty Claim"** means a claim made in accordance with the section "Formal Warranty Claims" herein.

**"Product"** means a Product listed in the Specifications Table below, and (iii) You bought from new from an Authorized Dealer new and in its original packaging.

**"Product Defect"** means an inadequacy of the Product that existed at the time when You received the Product from an Authorized Dealer and that causes a failure of the Product to perform in accordance with Monster's documentation accompanying the Product, unless such failure has been caused completely or partly by (a) any use other than Adequate Use, (b) transportation, neglect, misuse or abuse by anyone other than Monster's employees; (c) alteration, tampering or modification of the product by anyone; (e) accident; (f) maintenance or service of the Product by anyone other than a Monster employee or authorized service technician; (g) exposure of the Product to heat, bright light, sun, liquids, sand or other contaminants; or (h) acts outside the control of Monster, including without limitation acts of God, fire, storms, earthquake or flood.

**"Warranty Period"** means the time period during which Monster must have received Your Formal Warranty Claim. The different Warranty Periods related to Product Defects are defined in the Specifications Table below. The Warranty Period commences on the date when You purchased or received (whichever occurs later) the Product from an Authorized Dealer as evidenced by the Authorized Dealer's invoice, sales receipt, or packing slip. If You do not have written proof of the date of purchase or receipt, then the Warranty Period commences three (3) months after the date when the Product left Monster's or its factory as evidenced by Monster's records. The Warranty Period ends after the time defined in the Specifications Table has expired or after You have transferred ownership of the Product, whichever occurs earlier.

**"You"** means the first individual person that purchased the Product in its original packaging from an Authorized Dealer. This Limited Warranty does not apply to persons or entities that bought the Product (i) in used or un packaged form, (ii) for resale, lease or other commercial use, or (iii) from someone other than an Authorized Dealer.

##### SCOPE OF THIS LIMITED WARRANTY

**Products.** If a Product contained a Product Defect when You bought it from an Authorized Dealer and Monster receives a Formal Warranty Claim from You before the end of the Warranty Period for Product Defects applicable to the affected Product, then Monster will provide You with one of the following remedies: Monster will (1) repair or, at Monster's sole discretion, replace the Product, or (2) refund to You the purchase price paid for the affected

Product from an Authorized Dealer if repair or replacement is not commercially practicable or cannot be timely made. NOTE: MONSTER does not assume any liability for ANY INCIDENTAL, CONSEQUENTIAL OR INDIRECT DAMAGES.

##### GENERAL PROVISIONS

**Choice of Law/Jurisdiction.** This Limited Warranty and any disputes arising out of or in connection with this Limited Warranty ("Disputes") shall be governed by the laws of the State of California, USA, excluding conflicts of law principles and excluding the Convention for the International Sale of Goods. The courts located in the State of California, USA shall have exclusive jurisdiction over any Disputes.

**Serial number.** If this Product contains a serial number, this Limited Warranty is void if the label on the Product bearing the serial number has been removed, altered, or defaced.

**No Liability for Advice.** Any technical or other advice offered before or after delivery with respect to the use and application of the Product is furnished without charge and subject to the understanding that such advice is issued at the purchaser's sole risk without any limitation or modifications of any disclaimer or other provision contained herein.

**Other Rights.** THIS LIMITED WARRANTY GIVES YOU SPECIFIC LEGAL RIGHTS, AND YOU MAY ALSO HAVE OTHER RIGHTS, WHICH VARY FROM STATE TO STATE AND WHICH SHALL NOT BE AFFECTED BY THIS LIMITED WARRANTY. THIS WARRANTY EXTENDS ONLY TO YOU AND CANNOT BE TRANSFERRED OR ASSIGNED.

**Registration.** Please register Your Product at [www.MonsterCable.com/Warranty](http://www.MonsterCable.com/Warranty). Failure to register will not diminish Your warranty rights.

##### SPECIFICATIONS TABLE

Product Model No.	Warranty Period for Product
Monster® iEZClick™	One (1) Year

##### FORMAL WARRANTY CLAIM

**How To Make A Claim.** In the event of a Product Defect, You must follow these instructions: (1) Call 1-877-800-8989; (2) Give a detailed explanation of the Product Defect; (3) Obtain a Return Authorization Number; (4) Return the Products, shipping prepaid by You, to Monster for verification of Product Defect, along with a copy of Your original sales receipts and proof of purchase (UPC label) for such Products, and printed Return Authorization Number on the outside of the return package (the claim form will include instructions for return). IMPORTANT: IN ORDER TO EXERCISE YOUR RIGHTS UNDER THIS LIMITED WARRANTY YOU MUST SUBMIT YOUR ORIGINAL SALES RECEIPTS AND A PROOF OF PURCHASE (UPC LABEL OR PACKING SLIP FOR THE PRODUCTS).

**Further Proceedings.** Monster will reimburse You for any shipping costs that You incurred in accordance with Monster's instructions and, at its discretion, either (a) direct You to obtain a repair estimate at a service center for the Product; or, (b) make a payment to You in accordance with the scope of this Limited Warranty.

**Timing.** If You bring a Formal Warranty Claim and fully comply with all terms and conditions of this Limited Warranty, Monster will use its best efforts to provide You with a remedy within thirty (30) days after receipt of Your Formal Warranty Claim (if You reside in the United States - forty-five (45) days if You reside elsewhere), unless obstacles outside Monster's control delay the process.

Ver. 112003 – ©2004-2006 Monster Cable Products, Inc.

##### MONSTER SAFETY TIP

Do not wear headphones or attempt to operate the iEZClick during potentially dangerous activities. Please be aware of your surroundings at all times.