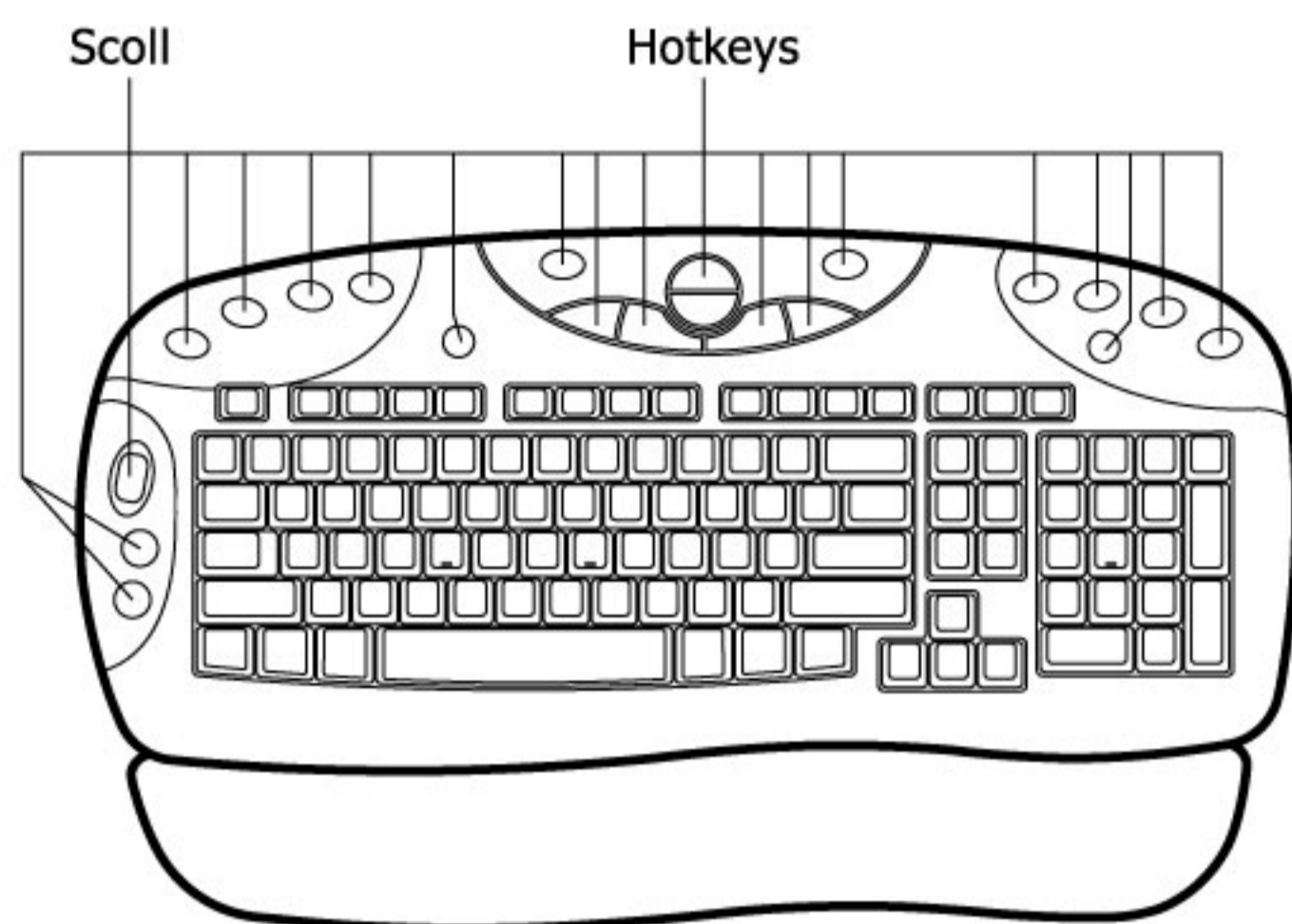


# QUICK GUIDE

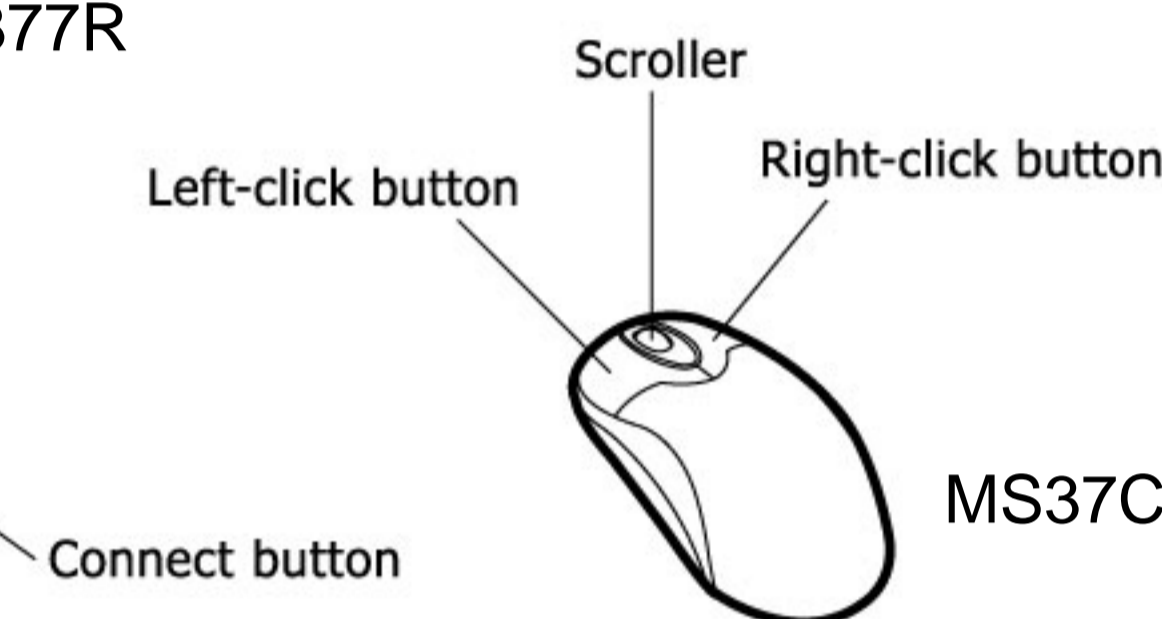
## Keyboard & Mouse RF Combo



K377R



R06



MS37C

### 1. Package Contents:

- Keyboard.
- Mouse.
- CD Driver.
- Receiver.
- USB to PS/2 adapter.
- Batteries

#### System Requirements

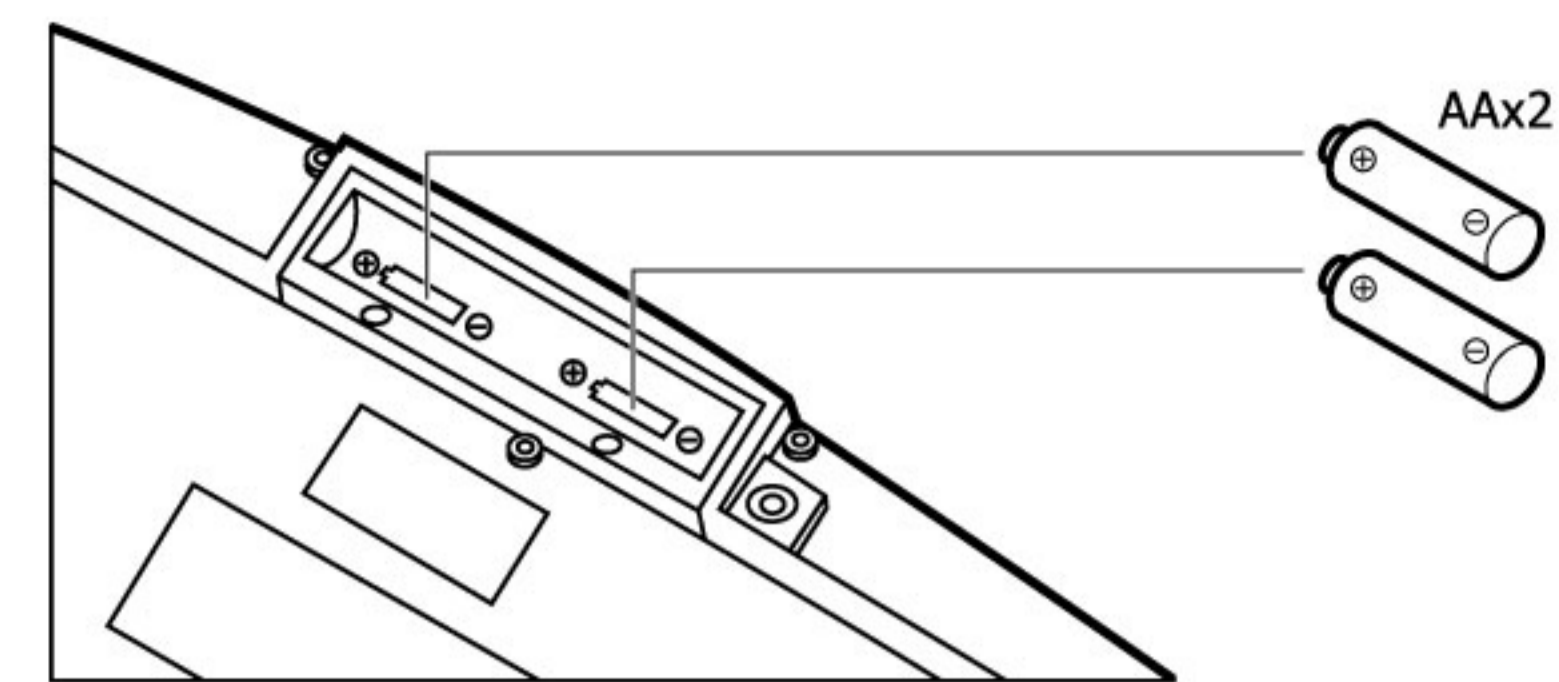
USB the CD-Driver for the mouse and hotkeys on your multimedia keyboard, you need the following:

- Windows XP/ME/2000/98SE/NT 4.0 or later.
- PS/2 mouse and keyboard ports.
- Sound Blaster compatible sound card (for CD/VCD/DVD, and MPEG operation).
- CD-ROM drive (for software installation and CD/VCD operation).

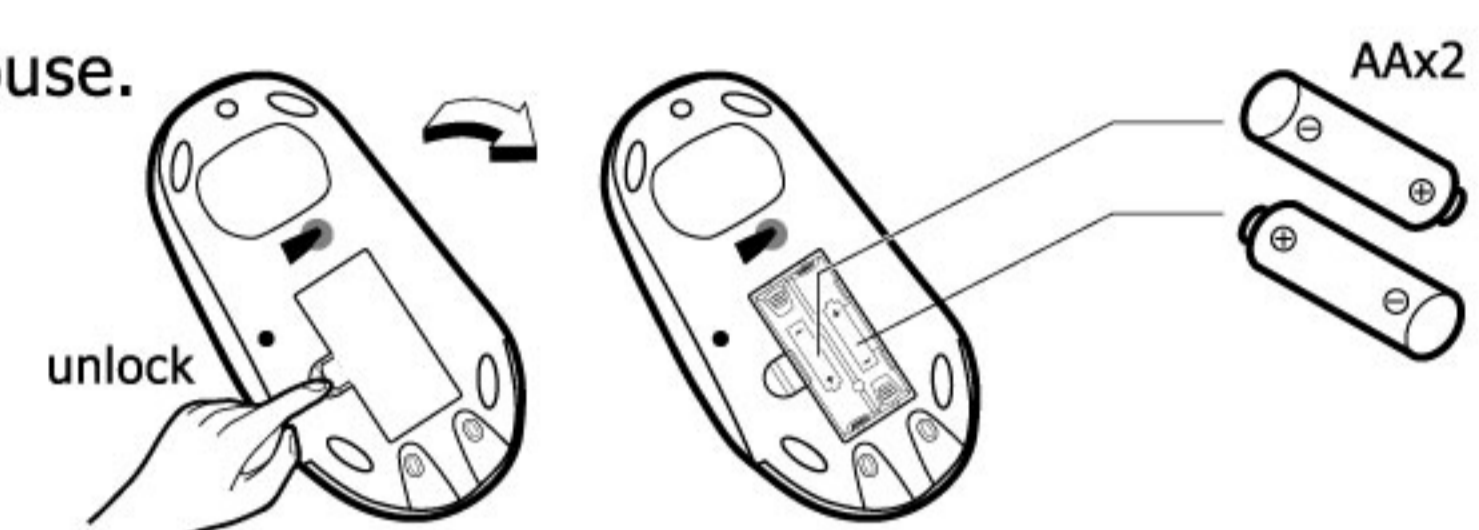
1

### 2. Install the Batteries:

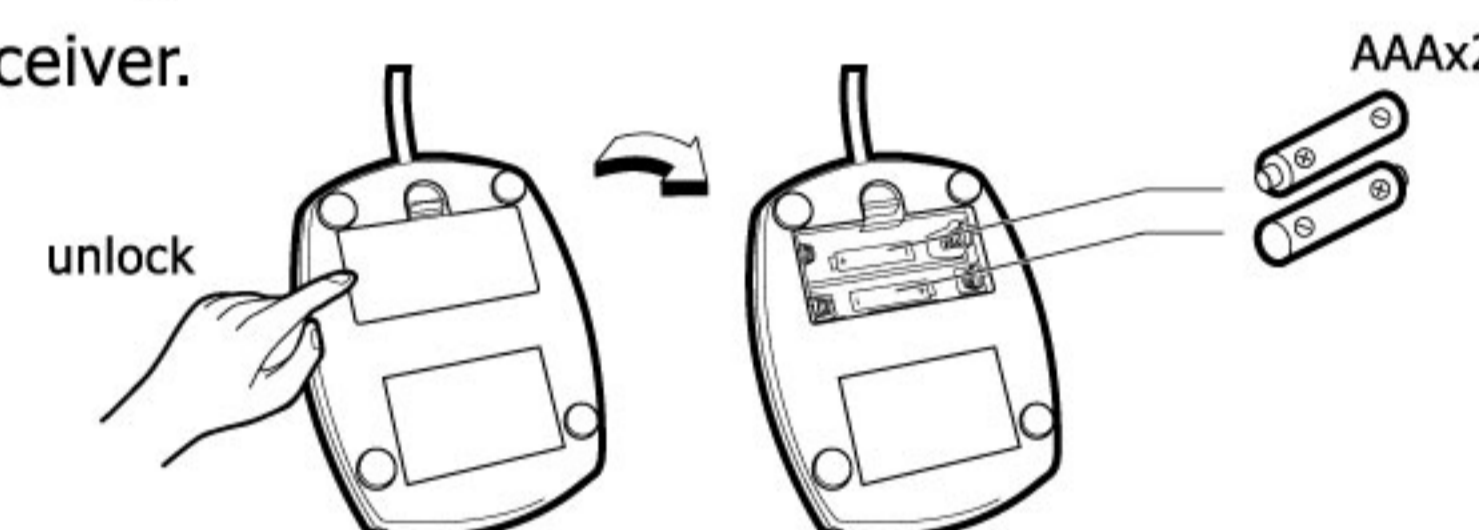
- Keyboard.



- Mouse.



- Receiver.

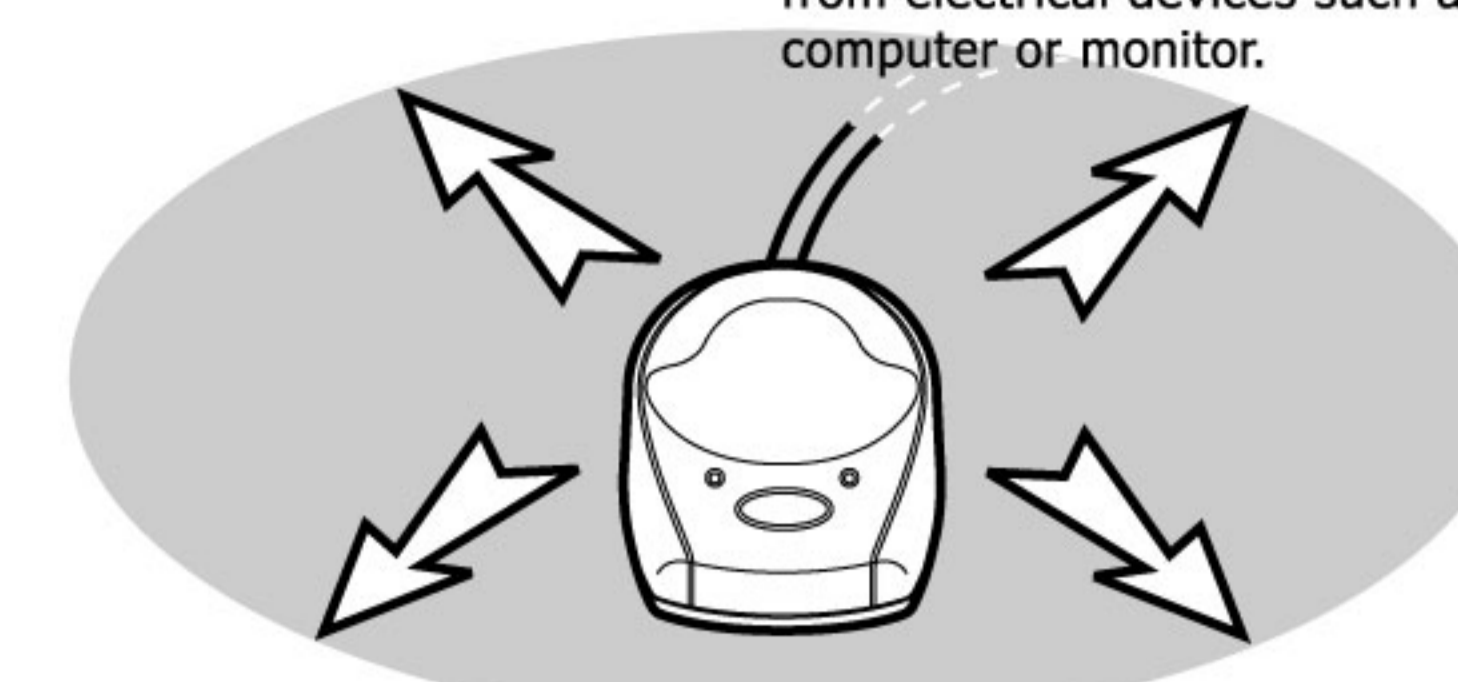


2

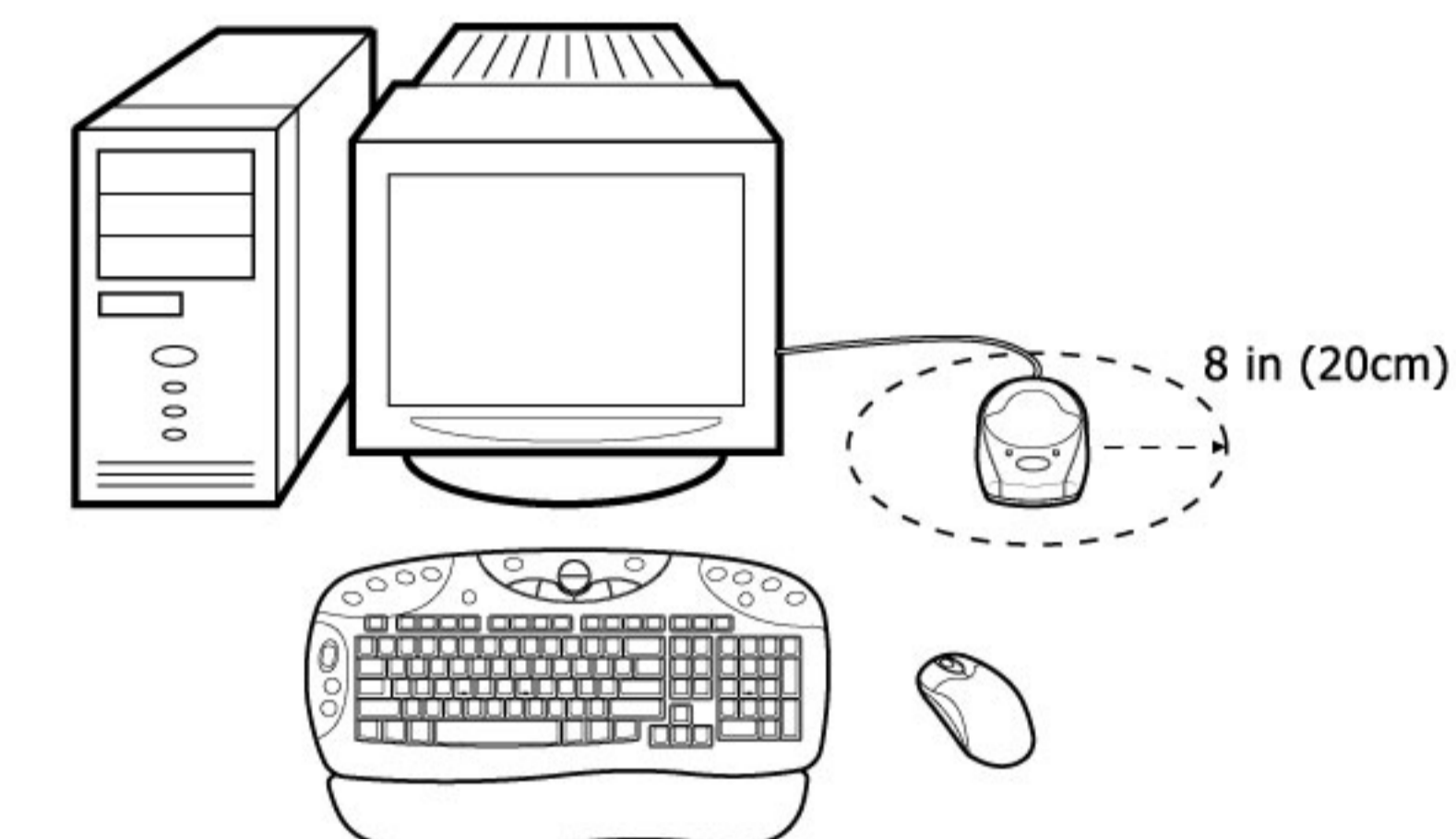
### 3. Notice Important

- Place the RF receiver on a good location.

Keep the receiver at least 8 inches (20cm) from electrical devices such as the computer or monitor.



- Place the keyboard and the mouse on the proper location for your computer.



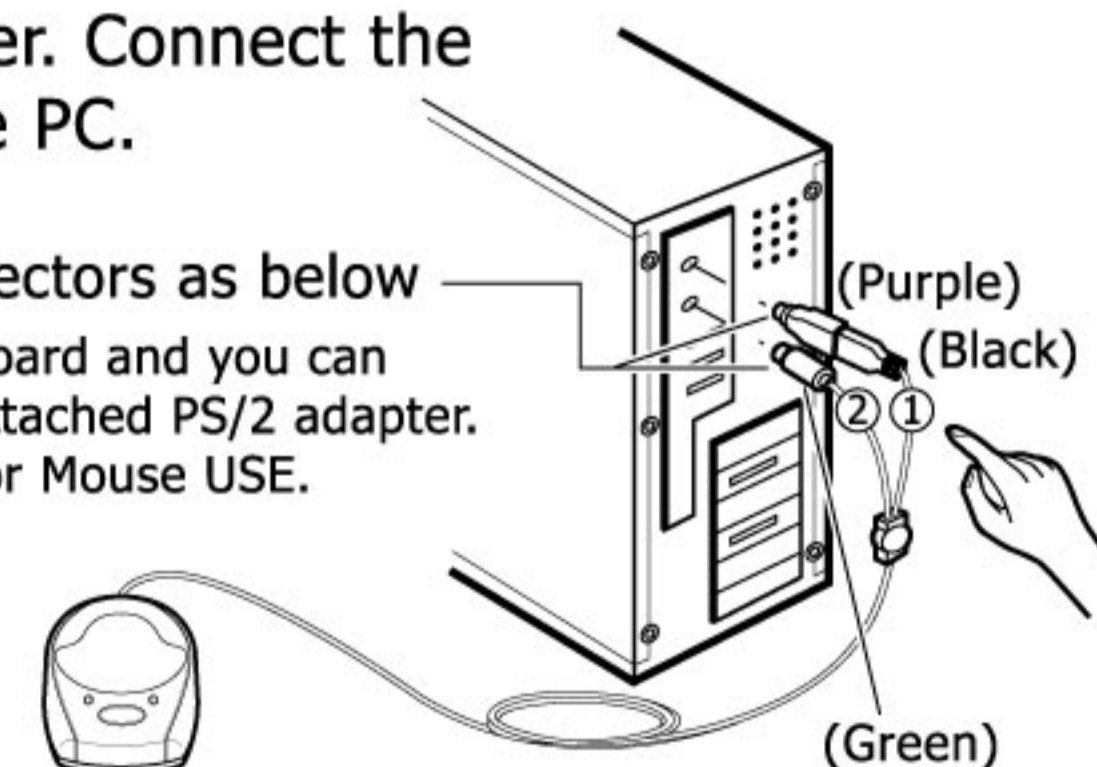
3

### 4. Installation:

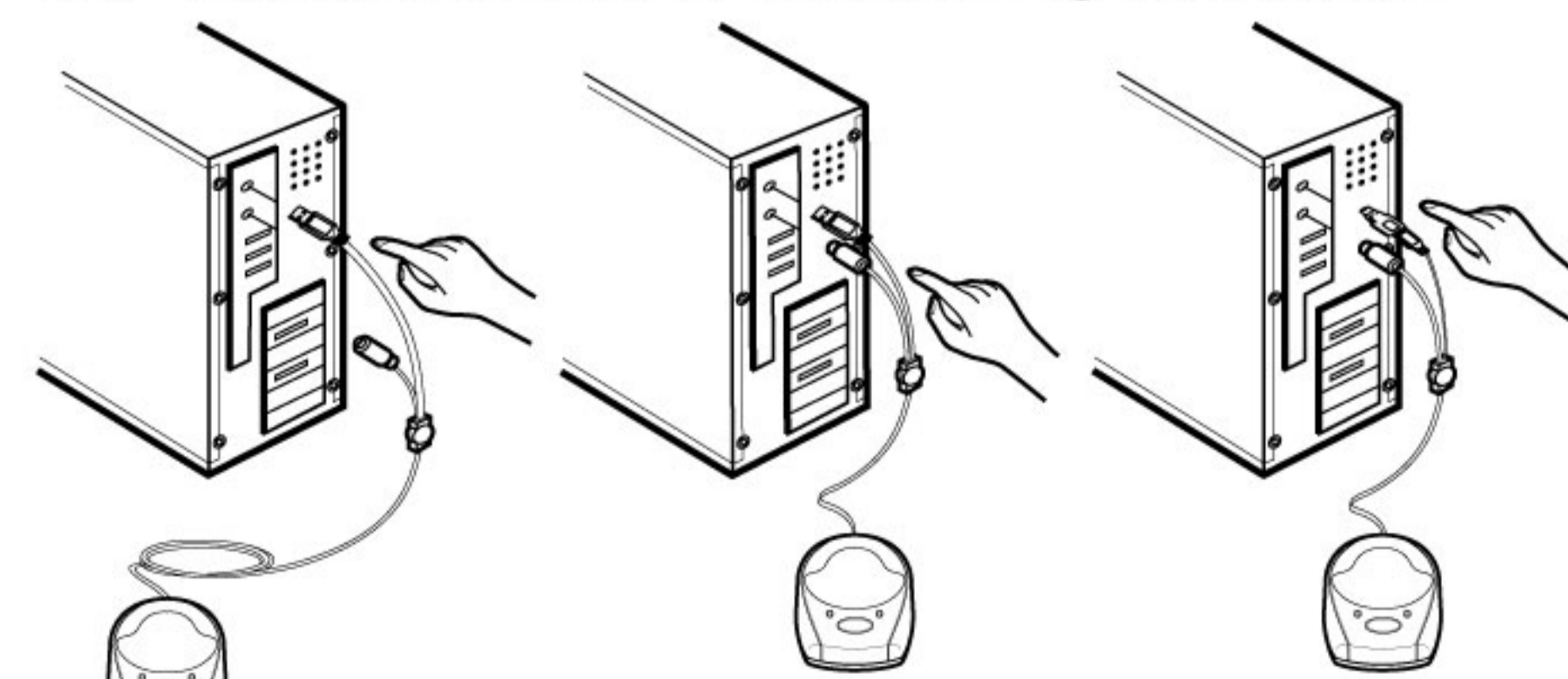
- Turn off the computer. Connect the receiver cable to the PC.

There is two kinds of connectors as below

- ① The USB Pin-head is for keyboard and you can change it into PS/2 pin with attached PS/2 adapter.
- ② The green PS/2 Pin-head is for Mouse USE.



You could choose one of the following 3 condition.



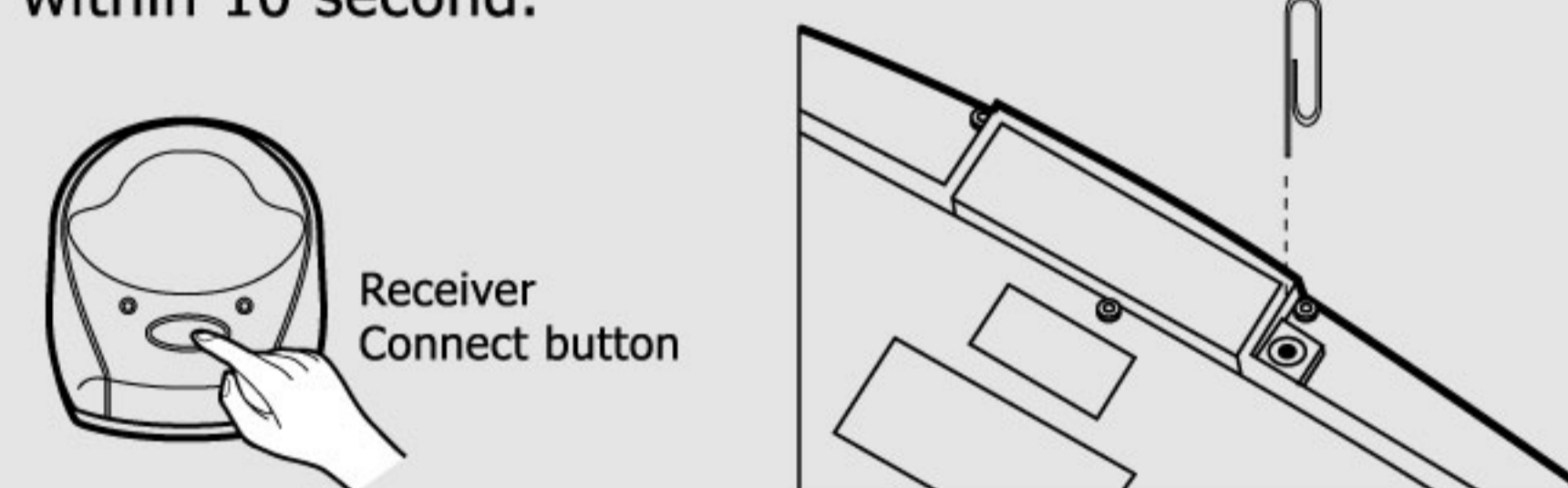
- 1) Use only the usb interface.
- 2) Use the usb+ps/2 interface.
- 3) Use the ps/2+ps/2 interface with an adaptor.

2. Turn on the computer and connect with Mouse and keyboard. Proceed ID select (Page 5)

4

### 5. ID Select Important

- (1) Corresponding ID connect for keyboard  
Press ID select switch on Receiver and then Keyboard within 10 second.



- (2) Corresponding ID connect for mouse  
Press ID select switch on Receiver and then Mouse within 10 second.



Note! Repeat this Step when un-connecting the Wireless RF Keyboard & Mouse for the first time or after replacing the batteries.

5

### 6. Install Device Drivers

1. After you have installed and connected Wireless RF Keyboard & Mouse, insert the Installation CD into the CD-ROM drive. The CD supports Windows Autoplay and starts running automatically. If not, access the CD from Windows Explorer, and then click the relevant CD-ROM drive. Double click the Setup.exe file.
2. Select the driver and application that you want to install, and then click the OK button.
3. Follow the onscreen instructions to complete this installation.

### 7. Troubleshooting

#### Wireless RF Keyboard & Mouse not detected

If the Keyboard and mouse don't respond to activity, follow these steps:

1. Ensure that the receiver cable is properly connected to the PS/2 mouse and keyboard ports. Ensure that the purple connector is connected to the keyboard port, and the green connector is connected to the mouse port.
2. Ensure that the batteries have been installed correctly.
3. Ensure that there are no IRQ or I/O address conflicts. Refer to your operating system user's manual for information on resolving IRQ and I/O address conflicts.

6

This device complies with part 15 of the FCC rules. Operation is subject to the following two conditions:  
(1) This device may not cause harmful interference and  
(2) This device must accept any interference received, including interference that may cause undesired operation.

Federal Communications Commission Requirements The equipment has been tested and found to comply with the limits for Class B Digital Device, pursuant to part 15 of the FCC Rules. These limits are designed to provide reasonable protection against harmful interference in a residential installation. This equipment generates, uses and can radiate radio frequency energy and, if not installed and used in accordance with the instruction, may cause harmful interference to radio communication. However, there is no guarantee that interference will not occur in a particular installation. If this equipment does cause harmful interference to radio or television reception, which can be determined by turning the equipment off and on, the user is encouraged to try to correct the interference by one or more of the following measures:

- Reorient or relocate the receiving antenna.
- Increase the separation between the equipment and receiver.
- Connect the equipment into an outlet on a circuit different from that to which the receiver is connected.
- Consult the dealer or an experienced radio/TV technician for help.

The changes or modifications not expressly approved by the party responsible for compliance could void the user's authority to operate the equipment.

7