

Quick Start

MOTOROLA MB886

smart meets life.



Start

When you're up and running, be sure to explore what you can do.

Note: This device supports apps and services that use a lot of data, so make sure your data plan meets your needs. Contact your service provider for details.



Let's get you up and running. After you power up, create or log into your Google™ account to access Play Store™ and more.

Caution: Before assembling, charging, or using your phone for the first time, please read the important safety, regulatory and legal information provided with your product.



Control & customize

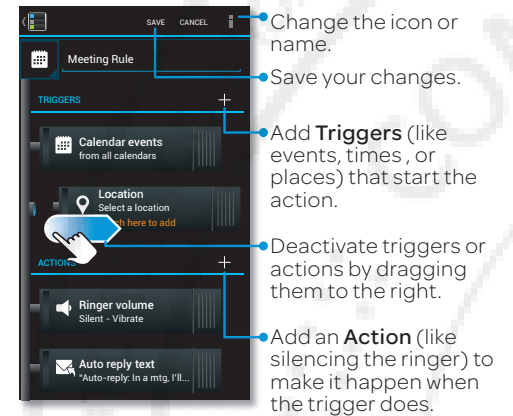
Touch, hold, drag, or flick to open shortcuts, widgets, menus, and more.

To change ringtones, notifications, or display settings, touch Apps > Settings > Sound or Display.



Wish you could automatically change your ring style at work, or reply to texts when you're driving? You can. **Smart Actions** can do things automatically at certain times, places, battery levels, and more.

Find it: Apps > Smart Actions > + to create one.



AT&T Features & Services

- AT&T Navigator®**—Get voice-guided, turn-by-turn, GPS-enabled directions. It is the fastest way to get where you are going—whether across town or across the country.
- AT&T Code Scanner**—AT&T Code Scanner reads UPC, QR and Data Matrix barcodes that you find on products, in ads or on-line, allowing you to compare prices, reviews, web sites, videos, coupons or learn more about products.

Data usage and subscription charges may apply.

More Information

For information on setting up or using these services, visit att.com/Tutorials. To add these services, contact your local AT&T store or call 1-800-331-0500.

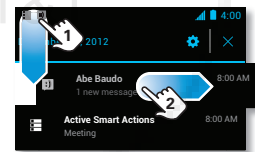
Home screen & apps

Use your home screen for quick access to your favorite apps and information.

To get apps, touch Apps > Play Store. To disable apps, touch Apps > touch and hold an app, then drag it to More options and choose **Disable**.



At the top of the screen, icons on the left notify you about new messages or events (flick the bar down for details). Icons on the right tell you about phone status:



network service	battery charging/full
Wi-Fi in range/connected	Smart Action active
Bluetooth™ on/connected	vibrate
GPS active	missed call
airplane mode	new voicemail
downloading	new text

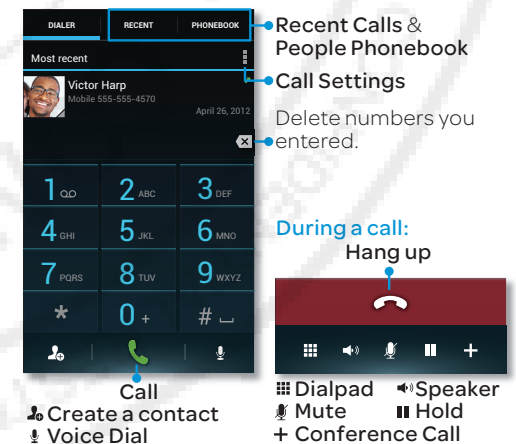
Tip: Network and Wi-Fi icons turn blue () when your phone exchanges data with your Google™ account.

Calls

Dial numbers, recent calls, or contacts, all from one place.

Find it: Dialer

For help with AT&T voicemail, visit www.att.com/esupport.



Contacts

Combine information from your Google™ contacts and social networks for quick access to everyone.

Find it: Apps > People

For help with transferring contacts, go to www.motorola.com/TransferContacts.

