
Temporary Confidentiality Requested

Exhibit 8: Draft User's Manual -- 47 CFR 2.1033(b)(3)

The attached User's Manual is the final production-intended version of the generic Motorola International English User Manual. This guide will be adapted to carrier-specific versionsⁱ, but the key information herein will be retained. Translations into other languages will also be done to support the needs of other markets. Minor revisions may be made to these manuals, prior to and subsequent to, placing this product onto the market. Selected portions of the User Guide can be found as indicated below:

8.1 Safety and Regulatory Section: Part 2, Page 48

8.2 Specific Absorption Rate (SAR) Data: Part 2, Page 50

ⁱ Motorola Mobility attests that the User's Guide provided with product shipping into Canada will provide any required Industry Canada notices and/or statements in both English and French, per the requirements of RSS-Gen.



MOTOROLA XOOM™ 2

MENU

- AT A GLANCE
- ESSENTIALS
- APPS & UPDATES
- TOUCH TYPING
- MOTOCAST
- WEB
- PHOTOS & VIDEOS
- CONTROL
- MUSIC
- CHAT
- EMAIL
- GOOGLE EBOOKS™
- LOCATION
- TIPS & TRICKS
- CONTACTS
- WIRELESS
- CONNECTIONS
- MANAGEMENT
- SECURITY
- TROUBLESHOOTING
- SAFETY, REGULATORY & LEGAL

Tip: Select a link above or use Bookmarks in your Acrobat™ Reader™ to jump to a topic.



More

Support



Back

Next



DRAFT - MOTOROLA CONFIDENTIAL
& PROPRIETARY INFORMATION





MOTOROLA XOOM™ 2

LIFE. POWERED.

MENU

- AT A GLANCE
- ESSENTIALS
- APPS & UPDATES
- TOUCH TYPING
- MOTOCAST
- WEB
- PHOTOS & VIDEOS
- CONTROL
- MUSIC
- CHAT
- EMAIL
- GOOGLE EBOOKS™
- LOCATION
- TIPS & TRICKS
- CONTACTS
- WIRELESS
- CONNECTIONS
- MANAGEMENT
- SECURITY
- TROUBLESHOOTING
- SAFETY, REGULATORY & LEGAL

More

Support

Back

Next

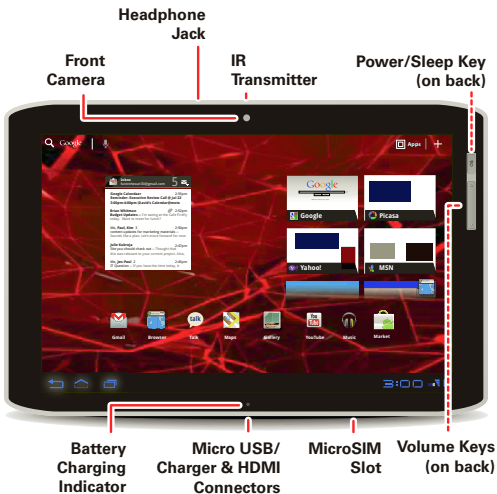
At a glance

AT A GLANCE

quick, simple, brief

DRAFT - MOTOROLA CONFIDENTIAL & PROPRIETARY INFORMATION
WELCOME

MOTOROLA XOOM™ 2 means multimedia fun and entertainment for the whole family.



TIPS & TRICKS

- Once you're up and running, check out "**WANT MORE?**"—more help, more accessories, more free stuff.
- For updates, online help, and more, see www.motorola.com/myxoom.

Notes:

- All screen images in this guide are simulated. Actual displays may vary.
- This device supports data-intensive apps and services. It is strongly recommended that you purchase a data plan that meets your needs. Contact your service provider for details.



MOTOROLA XOOM™ 2

LIFE. POWERED.

MENU

- AT A GLANCE
- ESSENTIALS
- APPS & UPDATES
- TOUCH TYPING
- MOTOCAST
- WEB
- PHOTOS & VIDEOS
- CONTROL
- MUSIC
- CHAT
- EMAIL
- GOOGLE EBOOKS™
- LOCATION
- TIPS & TRICKS
- CONTACTS
- WIRELESS
- CONNECTIONS
- MANAGEMENT
- SECURITY
- TROUBLESHOOTING
- SAFETY, REGULATORY & LEGAL

YOUR TABLET

That all important touchscreen.

TIPS & TRICKS

- For more details, see “**ESSENTIALS**”.
- Press and hold Power/Lock on the side of your tablet to turn it on.
- To put the screen to sleep, press Power/Lock . To wake it, press Power/Lock again, then drag left or right.
- Touch Menu to see options.



DRAFT - MOTOROLA CONFIDENTIAL & PROPRIETARY INFORMATION



DRAFT - MOTOROLA CONFIDENTIAL & PROPRIETARY INFORMATION



More

Support



Back

Next



At a glance



Notifications & Quick Settings



MOTOROLA XOOM™ 2

LIFE. POWERED.

MENU

- AT A GLANCE
- ESSENTIALS
- APPS & UPDATES
- TOUCH TYPING
- MOTOCAST
- WEB
- PHOTOS & VIDEOS
- CONTROL
- MUSIC
- CHAT
- EMAIL
- GOOGLE EBOOKS™
- LOCATION
- TIPS & TRICKS
- CONTACTS
- WIRELESS
- CONNECTIONS
- MANAGEMENT
- SECURITY
- TROUBLESHOOTING
- SAFETY, REGULATORY & LEGAL

More

Support

Back

Next



At a glance

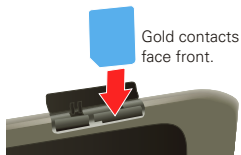
INSERT MICROSIM CARD

Prepare your tablet for the fourth generation of wireless.

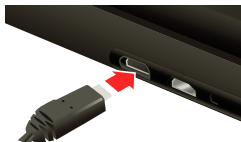
- 1 Open the microSIM cover at the bottom of the device..
- 2 Insert the microSIM card.



- 3 Close the microSIM cover..



- 4 Charge up.



TIPS & TRICKS

- In the unlikely event that your device becomes unresponsive, try a forced reboot: Press and hold both Power/Lock and the up volume key for three seconds.
- For location of the microSIM slot and other key features of your tablet, see “**WELCOME**”.

Caution: Before assembling, charging, or using your device for the first time, please read the important legal and safety information packaged with your product.



MOTOROLA XOOM™ 2

LIFE. POWERED.

MENU

AT A GLANCE
ESSENTIALS
APPS & UPDATES
TOUCH TYPING
MOTOCAST
WEB
PHOTOS & VIDEOS
CONTROL
MUSIC
CHAT
EMAIL
GOOGLE EBOOKS™
LOCATION
TIPS & TRICKS
CONTACTS
WIRELESS
CONNECTIONS
MANAGEMENT
SECURITY
TROUBLESHOOTING
SAFETY, REGULATORY & LEGAL

More

Back



At a glance

Support

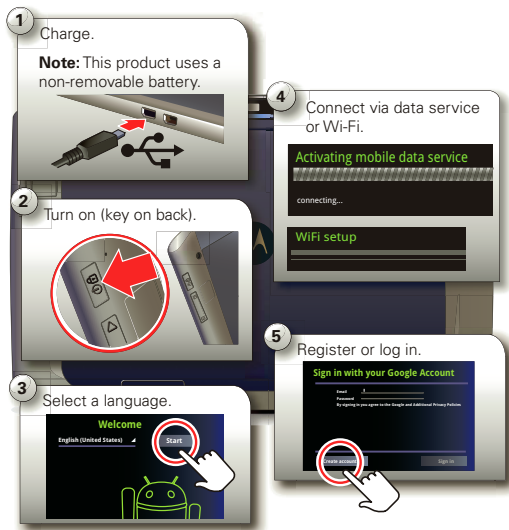
Next

REGISTER

Before assembling, charging, or using your device for the first time, please read the important safety, regulatory and legal information provided with your product.

Note: This device supports apps and services that use a lot of data, so make sure your data plan meets your needs. Contact your service provider for details.

Tip: In the unlikely event that your tablet becomes unresponsive, try a forced reboot—press and hold both Power/Sleep and the up volume key for three seconds.



TIPS & TRICKS

- If you sign in with an existing Google account, all your contacts and calendar events will automatically sync with your tablet.
- You can create a Google account online at mail.google.com/mail/signup, then use that account for your tablet login.
- Make a note of your Google account name and password.
- In the unlikely event that your device becomes unresponsive, try a forced reboot: Press and hold both Power/Lock and the up volume key for three seconds.



MOTOROLA XOOM™ 2

MENU

- AT A GLANCE
- ESSENTIALS
- APPS & UPDATES
- TOUCH TYPING
- MOTOCAST
- WEB
- PHOTOS & VIDEOS
- CONTROL
- MUSIC
- CHAT
- EMAIL
- GOOGLE EBOOKS™
- LOCATION
- TIPS & TRICKS
- CONTACTS
- WIRELESS
- CONNECTIONS
- MANAGEMENT
- SECURITY
- TROUBLESHOOTING
- SAFETY, REGULATORY & LEGAL



More

Support



Back

Next



At a glance

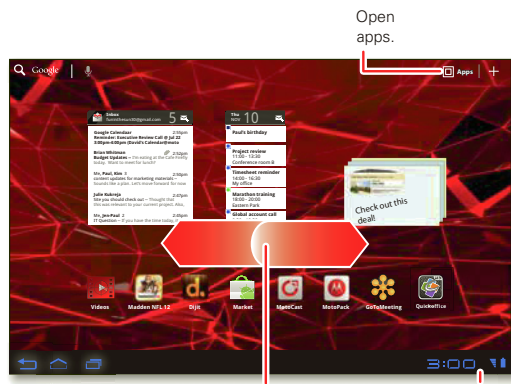
NAVIGATION TIPS

The basics to find your way around:

- **Home** : Return to the home screen.
- **Menu** : See a menu for the screen you're on.
- **Back** : Return to the previous screen.
- **Recent Apps** : See recent apps.
- **Notifications**: App notifications, tablet status, and quick settings.
- **App menu** : See all your tablet's apps.

TIPS & TRICKS

- For more details, see “**ESSENTIALS**”.
- Flick left and right to see more home screen panels.
- Touch the **X** on a notification to delete it.
- Touch in the notifications panel to see and modify quick settings such as **Airplane mode** and **Wi-Fi**.



Open apps.

Check out this deal!

Flick left or right to see more panels.

Notifications & Quick Settings

- Back
- Home
- Recent Apps



MOTOROLA XOOM™ 2

LIFE. POWERED.

MENU

- AT A GLANCE
- ESSENTIALS
- APPS & UPDATES
- TOUCH TYPING
- MOTOCAST
- WEB
- PHOTOS & VIDEOS
- CONTROL
- MUSIC
- CHAT
- EMAIL
- GOOGLE EBOOKS™
- LOCATION
- TIPS & TRICKS
- CONTACTS
- WIRELESS
- CONNECTIONS
- MANAGEMENT
- SECURITY
- TROUBLESHOOTING
- SAFETY, REGULATORY & LEGAL



More

Support



Back

Next



At a glance

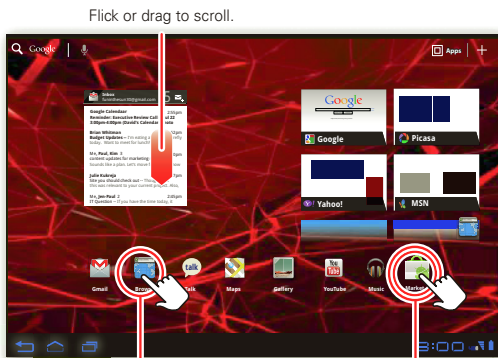
TOUCH ENTRY

It's all in the touch:

- **Touch:** Choose an icon or option.
- **Touch & Hold:** Open options.
- **Drag/Flick:** Scroll or move slowly (drag) or quickly (flick).
- **Pinch or Double-tap:** Zoom in and out.



DRAFT - MOTOROLA CONFIDENTIAL & PROPRIETARY INFORMATION



Touch to open.

Touch & hold to move.

TIPS & TRICKS

- For more details, see “**ESSENTIALS**”.
- If your screen goes to sleep, press Power/Lock to wake it up.
- When you flick a long list, touch the screen to stop it from scrolling.
- When viewing a map, touch it with two fingers to rotate and tilt your viewing angle.



DRAFT - MOTOROLA CONFIDENTIAL & PROPRIETARY INFORMATION



MOTOROLA XOOM™ 2

MENU

- AT A GLANCE
- ESSENTIALS
- APPS & UPDATES
- TOUCH TYPING
- MOTOCAST
- WEB
- PHOTOS & VIDEOS
- CONTROL
- MUSIC
- CHAT
- EMAIL
- GOOGLE EBOOKS™
- LOCATION
- TIPS & TRICKS
- CONTACTS
- WIRELESS
- CONNECTIONS
- MANAGEMENT
- SECURITY
- TROUBLESHOOTING
- SAFETY, REGULATORY & LEGAL



More

Support



Back

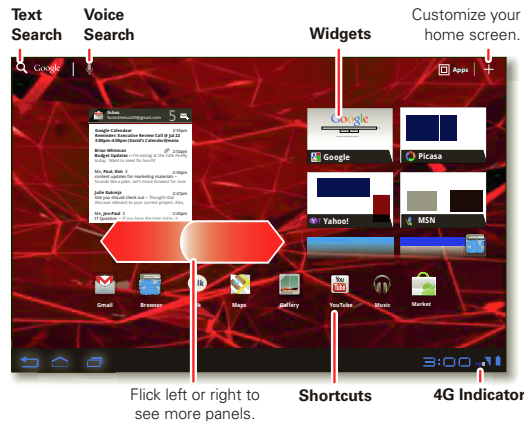
Next



At a glance

HOME SCREEN

The home screen gives you all your latest information in one place. Use the widgets, shortcuts and panels to see what's important to you—whether it's home, work, or play.



TIPS & TRICKS

- For more details, see “**ESSENTIALS**”.
- Flick left and right to see more home screen panels.
- Use panels to organize your widgets and shortcuts.
- To return to the center panel, touch Home .

DRAFT - MOTOROLA CONFIDENTIAL & PROPRIETARY INFORMATION



MOTOROLA XOOM™ 2

MENU

- AT A GLANCE
- ESSENTIALS
- APPS & UPDATES
- TOUCH TYPING
- MOTOCAST
- WEB
- PHOTOS & VIDEOS
- CONTROL
- MUSIC
- CHAT
- EMAIL
- GOOGLE EBOOKS™
- LOCATION
- TIPS & TRICKS
- CONTACTS
- WIRELESS
- CONNECTIONS
- MANAGEMENT
- SECURITY
- TROUBLESHOOTING
- SAFETY, REGULATORY & LEGAL

STREAM

Stream or download music and videos from your computer directly to your tablet. Download documents and files to your tablet, and upload them back to your computer. The free MotoCast app gives you nearly instant, secure remote access to your files.

TIPS & TRICKS

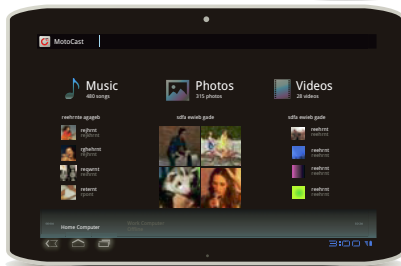
- For more details, see “**MOTOCAST**”.
- Be sure your Wi-Fi settings allow file sharing—see “**WI-FI**”.



DRAFT - MOTOROLA CONFIDENTIAL & PROPRIETARY INFORMATION



DRAFT - MOTOROLA CONFIDENTIAL & PROPRIETARY INFORMATION



More

Support



Back

Next



At a glance



MOTOROLA XOOM™ 2

LIFE. POWERED.

MENU

AT A GLANCE
ESSENTIALS
APPS & UPDATES
TOUCH TYPING
MOTOCAST
WEB
PHOTOS & VIDEOS
CONTROL
MUSIC
CHAT
EMAIL
GOOGLE EBOOKS™
LOCATION
TIPS & TRICKS
CONTACTS
WIRELESS
CONNECTIONS
MANAGEMENT
SECURITY
TROUBLESHOOTING
SAFETY, REGULATORY & LEGAL

More

Back



At a glance

Support

Next

PERSONALIZE

Go ahead, add your personal touch. Change your widgets, wallpaper, and more—make it yours.

- **Home screen:** Touch to add widgets and shortcuts, and to change your wallpaper.
- **Sounds and volume:** Touch **Apps** > **Settings** > **Sound**.



Drag the widget, shortcut, or other item to the home screen panel you want.

TIPS & TRICKS

- For more details, see “**CUSTOMIZE YOUR HOME SCREEN**”.
- To move or delete something on the home screen, touch and hold it, then drag it to another spot, another panel, or the trash can.
- Want a brighter view? For screen settings, touch **Apps** > **Settings** > **Screen**.