

MEMO

A large, light green rounded rectangular area with ten horizontal dotted lines for writing.



08 My Moto

01 Camera	112
02 Bluetooth	127
03 Subway Map	134
04 Dictionary	136
05 File Viewer	138
06 E-book	139
07 Stopwatch	139
08 Astro/Yoga/Acupress	140
09 USB Mass Storage	142

1. Camera

Before using camera

- Have the object stand still when you taking a photo.
- Hold the phone with both hands to prevent shaking.
- Rub the camera lens from time to time with soft cloth.
 - Camera lens can be damaged

Precautions

- Do not take a photo or video when you are not permitted or which may intrude other person's privacy.
 - You may have to compensate for violation of portrait or intrusion of privacy.
- Taking and distribution of a candid photo via internet is a criminal act and is subject to civil/criminal punishment.
- Do not take a photo or video where it is forbidden.
- In order to prevent the misuse of camera phones, this product is designed to sound the camera tone in accordance with the relative regulations.
- Observe the camera etiquette, and do not modify the camera tone at your own discretion.

- Battery consumption increases when using the camera.
- It is recommended to take a photo outdoor or inside the room with light. If you take the photo at night or dark place, set the brightness maximum.

CAUTIONS

- Place and use the phone in the safe place.
 - Keep the phone away from the magnetic components.
- Be careful that dust or sand should not infiltrate into the phone.
- The camera lens is weak to impact. Do not drop the phone or give strong impact.
- Do not face the lens to the sun or strong light.
 - The camera lens can be damaged.
- Avoid the place where there is sudden fluctuation of temperature and humidity.
 - In this case, turn off the power and dry the phone.

1 Recording with the folder closed

- When you close the folder, menu displayed in horizontal.



Note

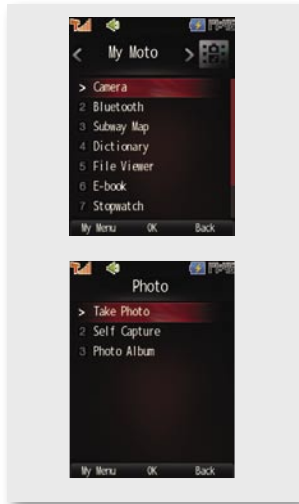
- Recording/Capturing photo or movie screen is set to vertical.
- Multi-Access function is unavailable during recording/capturing.

2 Recording with the folder opened.

- When you open the folder, menu displayed in vertically.



1. Camera (Cont'd)



Photo

You can manage captured photo.

1 Taking photos

Press (Left) ▶ Press ▶ Press ▶ Press ▶ Press ▶
or Press and hold (Camera)

- ➔ With the folder closed, press and hold (Camera) to take a photo.
(Only when lock is released.)
- ➔ When saving the photo, press (Left) to use i's box, send message, and visual expression menu.
- ➔ Press (Right) to change the file name, you can send it through MMS.
-You can press (Right) to change the text mode when renaming the file.
- ➔ You can receive a call during capturing the photo. It automatically switch to incoming call screen.
(However you cannot go back to camera mode after the call.)

Note

- Press or (Camera) to take a photo.
- To set the record/capture functions, press (Volume key).

■ Icons description

- Zoom** : Enlarge an object captured at a long distance.
(You cannot use 1200x1600 and 960x1280)
- Bright** : You can adjust brightness of the photo.
- Contrast** : You can adjust sharpness of the photo.
- Effect** : You can use various colors and filtering effects.
- Frame** : You can put the photo in various photo frames.
(Supported size: 240x320, 320x240)
- Flip** : You can reverse up/down or left/right of the photo.

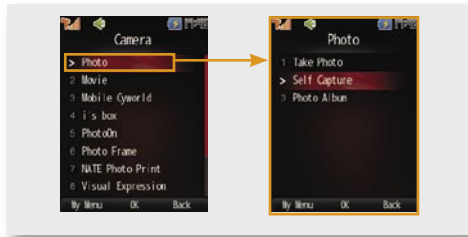
■ Setting camera menu

- Camera** : Switch between front and rear camera.
- Mode** : If you select photo, video or video mail, the phone switches into the preview mode of the selected function.
- Size** : You can set the photo size.
Rear camera: 640x480, 400x300, 320x240, 176x144
Front camera: 1200x1600, 960x1280, 480x640, 300x400, 240x320, 144x176
- Quality** : You can set the resolution of the photo.
-High: for printing
-Normal: for downloading to PC or for E-mail
-Low: for saving in the phone
- Setting** : You can set day/night mode.
- Serial** : Auto continued shooting (You cannot use 1600x1200 and 1280x960)
- Timer** : You can use the timer 3 sec., 5 sec., 10 sec.
- Select Memory** : You can check the total memory and the remaining free space.

1. Camera (Cont'd)

2 Self-Camera

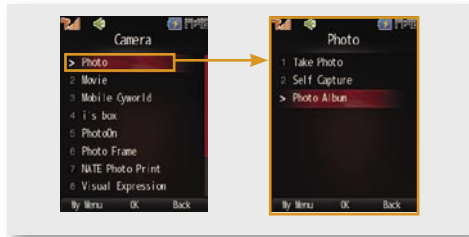
Press **Left** ▶ Press **5** ▶ Press **1** ▶ Press **1** ▶ Press **2**



- You can take a self photo using front camera.
- When the folder is closed, you cannot take a self photo.

3 Photo Album

Press **Left** ▶ Press **5** ▶ Press **1** ▶ Press **1** ▶ Press **3**



- You can view and manage the photos.
- If you press **Right** in the photo preview mode, you can access Photo Album.
- Some functions (Display, Move/Copy files, Sort files, and Select all) are restricted in the external memory folder.
- You cannot use some functions (send to message, send/register, set as display, edit photo) when using Chg_img menu.

■ Using Photo Album Menu

Send to Message : Attach the photo and transfer through MMS message.

Send/Register : Send the photo to various services.

- e-mail : Attach photo and send via e-mail.
- Cyworld : Send photo to the mobile cyworld homepage.
- i's box : Connect to i's box service and send the photo.
- Visual Expression : Set the video coloring and lettering service.
- PhotoOn : Use additional services using the photo.
- Send via Bluetooth : Send the photo using wireless bluetooth.
- Bluetooth Print : Connect and set the bluetooth between the phone and computer and print the photo.

Delete : Delete the selected photo (excluding protected photos).

Set as Display : Set the photo as a default display.

Edit Photo : Edit photos (This menu is only available for photo sizes less than 640x480.)

Move/Copy : Move/Copy the photos in the current folder to other folder.

File Info/Manager : Check the photo information, and rename the file.
- Set the file lock/unlock.

Folder Manager : Edit the folder, rename it, and set lock/unlock.

File view : View the photos stored in the selected folder.

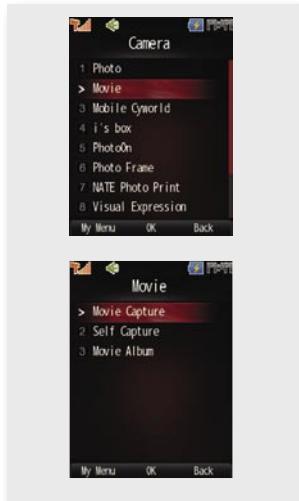
File sort : Sort the photos in the selected folder.

Select All : Select all photos stored in the selected folder and use various menu.

Delete All : Delete all photos stored in the folder except protected ones.

※ Note that information fee or additional data fee is imposed on photos attached to an MMS messenger or image call service.

1. Camera (Cont'd)



Movie

You can capture movies and manage the captured movies.

1 Movie Capture

Press **[Left]** ▶ Press **[5]** ▶ Press **[1]** ▶ Press **[Z]** ▶ Press **[1]**

- Select **[Right]** to cancel movie capturing and choose **[Left]** to pause.
- When saving the movie, press **[Left]** to use i's box, send message, and visual expression menu. Also after renaming the movie, press **[More]** to save it. (You can change the text mode by pressing **[Right]**.)
- Depends on the memory capacity, the recording time may vary.
- If you close the folder when capturing the movie, captured movie file will stop and does not save into your phone.

Note

- To capture a movie, press **[More]** or **[Camera]**.
- To set the record/capture functions, press **[Volume key]** to move and select.
- If an incoming call arrives while capturing movies, press **[Call]** to connect the call. The captured movie is automatically stored in the movie album.
- After the call, the screen is switched to the movie preview status.
- To send a movie message, press **[Left]** and select movie mail in capture mode.
The cell phone is optimized for sending a message MMS. Note that additional data service charge is imposed on the transmitted MMS message.

■ Icons description

- Zoom** : Enlarge an object captured at a long distance.
(You cannot use 1200x1600 and 960x1280)
- Bright** : You can adjust brightness of the photo.
- Contrast** : You can adjust sharpness of the photo.
- Effect** : Apply various colors and filtering effects.

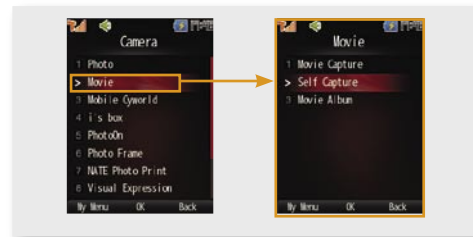
■ Setting camera menu

- Camera** : Switch between front and rear camera.
- Mode** : Select one of Photo, Movie, Movie Mail, and VT movie to move to preview mode of the selected item.
- Size** : Set size of movie screen. (176x144, 320x240)
- Select Memory** : Select saving folder between the phone and external memory.

2 Self Capture

You can take a self capture using the front camera of the phone.

Press **[Left]** ▶ Press **[5]** ▶ Press **[1]** ▶ Press **[Z]** ▶ Press **[Z]**

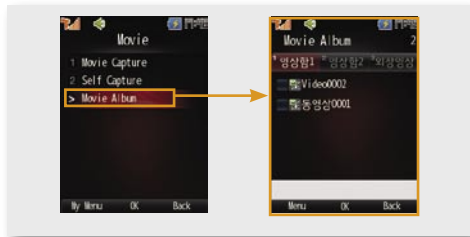


1. Camera (Cont'd)

3 Movie Album

You can preview and manage the captured movie.

Press **Left** ▶ Press **5** ▶ Press **1** ▶ Press **2** ▶ Press **3**



- To move to Movie Album, press **Left** in preview mode.
- Some functions (i's box, preferences, ringtone, copy/move, sort, select all) are not available for external movie folders.

Using Movie Album Menu

Send to Message : Attach the movie and transfer through MMS message.

Send/Register : Send the movie using i's box service and bluetooth.

- i's box : Connect to i's box service and send the photo
- Visual Expression : Register as video coloring and lettering.
- Send via Bluetooth : Send the movie using wireless bluetooth.

Delete : Delete the selected movie (excluding protected movies).

Set as Standby : Set the movie as a default display.

Set as Ringtone : Set as ringtone for selected movie.

Move/Copy : Move/Copy the movies in the current folder to other folder.

Info. Manager : Manage the movie file and folder.

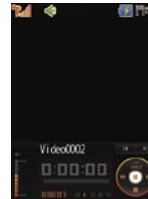
- **File Info/Manager** : Check the movie information, and rename the file.
- Set the file lock/unlock.

- **Folder Manager** : Edit the folder, rename it, and set lock/unlock.

File view : View 9 movies at a page.

File sort : Sort the movies in the selected folder.

Icons used for playing movie



- Movie OK** : Pause/Play
- Repeat** : Set Repeat
- Stop** : Stop(Move to the previous page)
- Rewind** : Rewind
- Play** : Forward
- Volume key** : Adjust Volume
- Left** : Move to previous movie
- Right** : Move to next movie



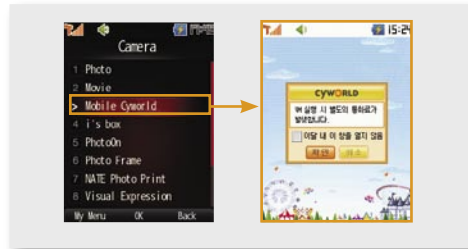
Note

- When etiquette mode is not released, volume key does not activated.
- If you reset the etiquette mode for a movie during capturing, your mobile phone does not recover etiquette mode after movie capturing is completed.
- If a call is received during playing, the mobile phone returns to the receive screen and the play screen is automatically recovered after the call is completed.



You can connect to the mobile cyworld using the phone.

Press **Left** ▶ Press **5** ▶ Press **1** ▶ Press **3** ▶ Press **3**



- ※ A service fee is charged when you use the service. Contact the service provider or visit Cyworld mobile homepage (<http://cymobile.cyworld.com>) for the service and further information.

1. Camera (Cont'd)

i's box

You can edit and manage the saved movie file as UCC.

Press **Left** ▶ Press **5** ▶ Press **1** ▶ Press **4**



PhotoOn

You can check additional services regarding the photo contents.

Press **Left** ▶ Press **5** ▶ Press **1** ▶ Press **5**

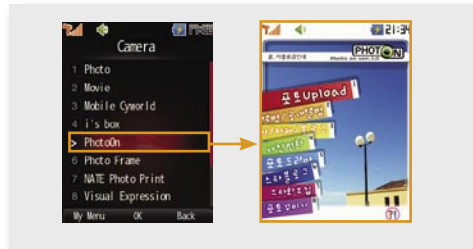
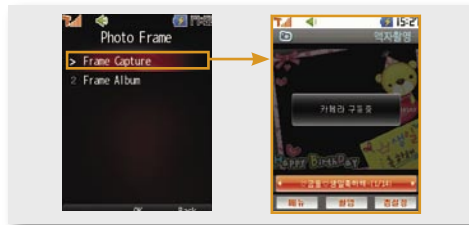


Photo Frame

You can manage and view the captured photos and use all different types of services using the frame.

1 Frame Capture

Press **Left** ▶ Press **5** ▶ Press **1** ▶ Press **6** ▶ Press **1**



- The photo frames are updated monthly without charge. You can download the new frame from NATE.
 - Press **Up/Down** to select a photo frame.
 - Press **Right** and adjust distance with **Up/Down** and the brightness with **Left/Right**.
- ※ If you use the updated frames without purchasing them, a call rate and an additional information service fee are charged every time you save the photo with the frames.
- A service fee is charged when you download the frames.

■ Menu while using photo frames



Menu description

Frame box	You can store and manage the frames downloaded from NATE.
Frame photo album	You can store and manage the photos.
Save frame	You can save the selected frame.
Up/Down reversion	Reverse the photo up side down.
Download frame	You can download frames from NATE.
Help	You can view guidelines on the photo frame service.
Receiving agreement	You can agree or block the updating frame service.

1. Camera (Cont'd)

Photo Frame (cont'd)

You can manage and view the captured photos and use all different types of services using the frame.

2 Frame Album

Press **Left** ▶ Press **5** ▶ Press **1** ▶ Press **4** ▶ Press **2**



- Press **Left** to use Delete, Delete all, Rename photo file, Send photo, Send my album or Set Standby Screen.

NATE Photo Print

You can request printing of the photos selected from 'Photo album' and receive the printed photos from the service provider.

Press **Left** ▶ Press **5** ▶ Press **1** ▶ Press **7**

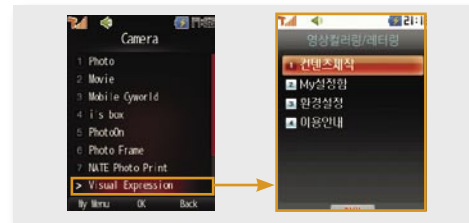


- ※ Contact the service provider or visit NATE Photo homepage (<http://photo.nate.com>) for further information.

Visual Expression

You can use various functions when you place a video call.

Press **Left** ▶ Press **5** ▶ Press **1** ▶ Press **8**

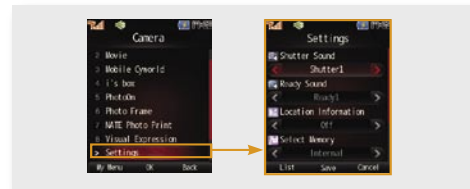


- Video coloring is the service that you can display the predefined image or characters and emotion on the receiver's phone when you place a video call.
- Lettering is the service that you can display the predefined name or nickname on the receiver's phone when you place a call.

Settings

You can set various functions of camera.

Press **Left** ▶ Press **5** ▶ Press **1** ▶ Press **9**



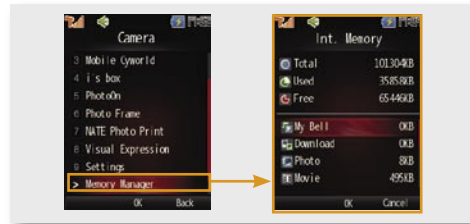
- Shutter Sound : Set a sound generated at an instant of capturing.
- Ready Sound : Set a sound generated during capturing.
- Location Information : Set or release to view the information of the captured photo and movie location.
- Select Memory : Set saving location. (phone/external memory)
- Autosave : Set a method of saving the captured photos or movies. (manual/auto)

1. Camera (Cont'd)

Memory Manager

You can check and manage the information on total memory size, used memory size, and available memory size of your phone.

Press **Left** ▶ Press **5** ▶ Press **1** ▶ Press **0**

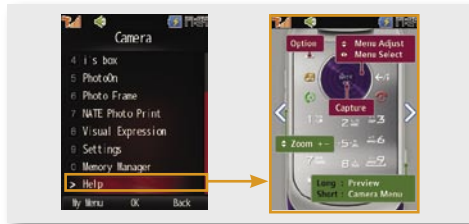


- Select an item you want and press **New** to move to the selected item. (Excluding June, map, and others)

Help

Help shows instructions for using various keypad buttons assigned to the functions of phone camera.

Press **Left** ▶ Press **5** ▶ Press **1** ▶ Press *****



2. Bluetooth

Bluetooth

Bluetooth is a standard for wireless communications at short distances 2.45GHz and performs a wireless connection between various devices within a certain distance.

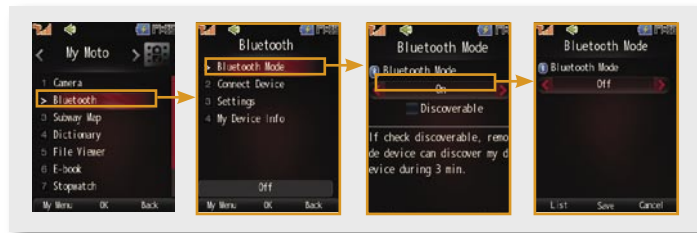
- ➔ Please use only Motorola-designated products or authorized goods.
 - VU20 bluetooth functions are best suitable for Motorola's bluetooth headsets or accessories.
- ➔ Bluetooth devices of other manufacturers may not be compatible with VU20.
 - Please see the user manuals of each manufacturer and contact a manufacturer when troubles occur.
- ➔ Bluetooth related products like bluetooth headset and handsfree are for separate sale.
 - You can buy it at your agency or nearest Motorola service center.
- ➔ To learn an accurate method of using bluetooth, see the user manual of bluetooth besides this manual.
- ➔ When registering a bluetooth unit to the phone, please do it within near distances.
- ➔ When making a call with bluetooth unit, farther its distance from the phone is, the lower the speech quality is.
 - If the unit is more than a certain distance away from the phone, a call may be disconnected.
- ➔ When making a call in a noisy indoor or outdoor, surrounding noises may interrupt the call.
- ➔ If you make a call in interrupted areas or a part of the body like hands touches the receiving/sending part of the phone, the phone may work abnormally or generate some noise.
- ➔ Out of VU20 bluetooth functions, the communication with mobile handsets is optimized for VU20 mobile phones, so it cannot be compatible with those of other manufacturers.
- ➔ Bluetooth may generate some different performances according to applicable rules. This device is low in transmission output, but signal decrease is so large as to minimize the battery consumption. Therefore, general rules are applied to this unit for long-term use.

2. Bluetooth (Cont'd)

Bluetooth Mode

You can set the connection between the phone and other devices via bluetooth.

Press **Left** ▶ Press **5** ▶ Press **2** ▶ Press **1**



- You can search for new bluetooth devices in 3 min. and add them to your phone's list of paired devices. (Once the device is paired up with the phone, you can search them from the list)
- If you run the bluetooth menu such as connection to bluetooth or allow access when the bluetooth mode is not enabled, a mode selection guide popup window is displayed. Select 'Yes' on this window, and press **Left**.
- If the phone is set to bluetooth mode, its battery consumption will be larger than ordinary times.
 - If bluetooth functions are not used, please clear the bluetooth mode setting.

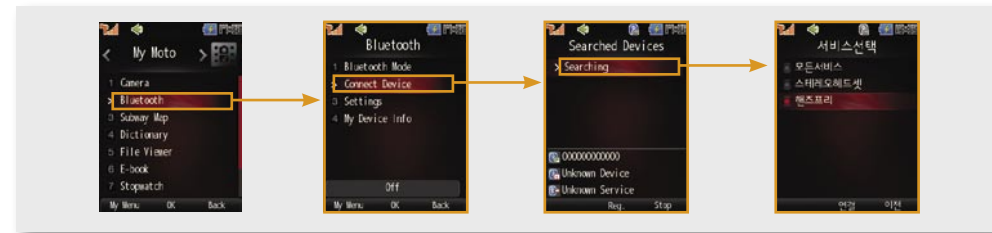
Menu description

	Bluetooth mode setting
	Hide internal device
	Connect handsfree
	Connect stereo handsfree
	Connect headset
	Connect stereo headset
	Stereo
	Dial-up network and FTP connection status

Connect Device

You can use bluetooth functions by registering or connecting the bluetooth device to the phone.

Press **Left** ▶ Press **5** ▶ Press **2** ▶ Press **2**



- If the cell phone is connected to bluetooth device, an icon of connected device will be displayed on the standby screen.
- After selecting a connected device from a list, press **Left** to check a name/device, and perform the functions like Delete and Delete all.
- Bluetooth can be connected only one at a time. To connect other equipment besides paired up devices, select a current paired up device, and press **Left** to disconnect.

2. Bluetooth (Cont'd)

■ How to connect non-registered devices

- 1) Check if a target device is waiting for registration to bluetooth.
 - See the manual of the device concerned for how to set the bluetooth device to standby mode.
- 2) Press **[Left]** ▶ Press **[5]** ▶ Press **[2]** ▶ Press **[1]** and set bluetooth mode.
- 3) If there is no registered bluetooth from bluetooth device connection, press **[Right]** to select the functions like Search All, Search Audio Only, Search Mobile Phone Only, Search Computer Only, and Search Printer Only.
- 4) After selecting a desired search, press **[Search]** to search the bluetooth devices automatically.
 - If there are no registered devices, the list of connectable devices is displayed.
- 5) If the bluetooth device is searched, the information on searched devices is displayed on the screen.
- 6) Select a device and press **[Enter]**. Enter the PIN CODE, and the device is automatically registered to the phone.
 - For PIN CODE of the equipment concerned, see the user manual of the equipment concerned.
- 7) After selecting a registered device service, press **[Enter]** to connect the phone with bluetooth device.
 - Upon connection, an icon of the connected device is displayed on the standby screen.

■ How to connect a registered device

- 1) Press **[Left]** ▶ Press **[5]** ▶ Press **[2]** ▶ Press **[1]** and set bluetooth mode.
2. Press **[Left]** ▶ Press **[5]** ▶ Press **[2]** ▶ Press **[2]** and select device to connect. Press **[Enter]** to connect the phone with bluetooth device automatically.
 - If you want other connections than a current one, select a currently connected device first, and press **[Enter]** to disconnect. (When connected, the connected device icon is displayed on the standby screen.)

■ Using bluetooth printer

- The bluetooth printer must be connected to the phone.
- You can select the photos and print out wirelessly.
- Refer to the user manual of the printer for the detail.

■ Using bluetooth headset/handsfree kit/stereo headset

- To place a call on the headset, dial the phone number, and then press Call button on the headset.
- You can switch the call to the phone from headset/handsfree kit, press and hold **[Phone]**. In order to switch the call back to headset/handsfree kit, you should press and hold **[Phone]** again.
- To receive a call or end a call on the headset, press Call button on the headset.
- If you press Call button on the headset, the call is placed to the latest call number.

Note

- The bluetooth headset/handsfree kit/stereo head set must be connected to the phone.

■ Using bluetooth PC

- By connecting the phone with the bluetooth PC, you can use the phone as a wireless communication modem, or you can easily send files from the phone to PC.
- You can copy the photos in the phone to PC using PC Sync program for bluetooth communication between PC and VU20.

Note

- Because the computer and the VU20 phone communicate with each other via OPP (Object Push Profile), there is a case that the function is not supported depending on the PC manufacturer.
- Use the PC Sync program for bluetooth communication between PC and VU20.
- Since the function works differently depending on the software installed in the PC, read the bluetooth manual of each vendor.

1) Using the phones as a PC wireless communication modem

- Run the bluetooth control program on the PC.
- If you select Dial-up Networking in Access setting in bluetooth preferences, you can use the bluetooth device as a wireless communication modem. However, if you connect the 5PIN USB data cable, wireless modem is disconnected. (Dial-up Networking, see p.132)

2) Sending files to PC

- You can search files in the phone and send them to PC.
- Run the bluetooth control program (PC sync) on the PC.
- Set the bluetooth communication (Send file) on the phone. After setting the communication function, you can select and send files to PC.

2. Bluetooth (Cont'd)



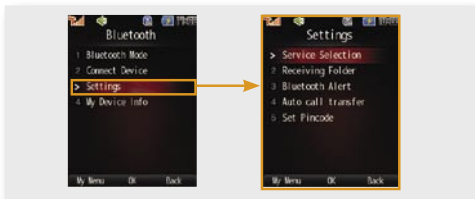
Note

- While connecting the phone to bluetooth communication device, you can still make a call via headset or handsfree, or play various contents.
- To use a connected device, you must stay within 10m from the phone.
- When using bluetooth FTP(File Transfer Profile) or OPP(Object Push Profile), the receiver phone must be in the standby mode.
- Description of bluetooth device functions and the method of using them described in this user manual may vary depending on bluetooth device.
- For more information, please see the user manual of the device concerned.

Settings

You can set preferences for bluetooth functions.

Press **Left** ▶ Press **5** ▶ Press **2** ▶ Press **3**



- Service Selection** : Set a reception mode from other devices.
- Audio Devices : Make a connection from a registered bluetooth audio device to the phone.
 - Dial Up Networking : Search the phone from bluetooth PC, and use it for PC wireless modem.
 - Receive Data : You can exchange data with a near by bluetooth device.
 - File Transfer : You can send files from the phone to other devices.
 - PC-Sync : Use the PC-Sync program for bluetooth between the phone and PC.

- Receiving Folder** : When saving data received from bluetooth-supporting devices to the phone, you can designated a folder.
- Phonebook Group : You can save groups by pressing and designating a folder (others, workplaces, friends, families).
 - Photo Album : You can save albums by pressing and designating a folder (photo box1, photo box2).
 - Movie Album : You can save albums by pressing and designating a folder (movie box1, movie box2).
- Bluetooth Alert** : The phone alerts when the bluetooth successfully attempts connection or found abnormal, interrupted connection.
- Auto call transfer** : When the user place a call using the phone, auto call transfer automatically connects to the bluetooth headset.
- Set Pincode** : When you connect the bluetooth device, press to set the PIN Code automatically inserted.

My Device Info

You can check the bluetooth name address, and type.

Press **Left** ▶ Press **5** ▶ Press **2** ▶ Press **4**



- ➔ When checking my device information, you can rename the device by pressing . When changing the name, you can change the text input mode by pressing **Left** (Right).