

MOTOROKR S7-HD
Bluetooth
Headphones Quick
Start Guide
DRAFT 4 - 8/15/08

Temp Page - To be discarded before printing
use this template with A7MotoQSG StructApps



MOTOROKR™ S7-HD

Quick Start Guide



welcome

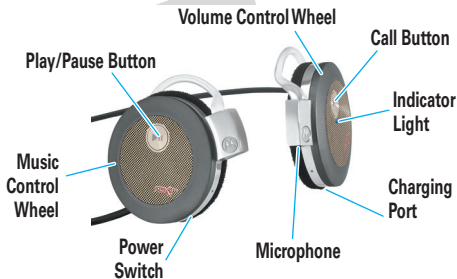
The MOTOROKR™ S7-HD Wireless Headphones deliver a high-definition listening experience in a sleek design. Perfect for streaming music from your MP3 player, computer, or music phone.

- **Goodbye wires**—Move freely with wireless control of your music and calls from the rotating controls on the S7-HD headphones.
- **Chill out in comfort**—The S7-HD's comfortable on-ear wearing style makes it your ideal partner for total music immersion.
- **Music to your ears**—High-quality speakers and enhanced acoustic design for a high-definition wireless listening experience.
- **Stay connected**—Communicate hands-free, with clear conversations in stereo.

Note: Before using your headphones for the first time, be sure to review the important safety and legal pamphlet and follow instructions. Periodically review this information so you remember how to safely use your headphones.

before you begin

Take a moment to familiarize yourself with the components of your headphones.



charge it

You'll need to charge your headphone's battery for a minimum of 2 hours using the Motorola charger.

- 1 Plug the charger into the charging port on your headphones.



The Charging indicator light turns red when the battery is charging. When the battery is fully charged, the indicator light turns green.

- 2 Disconnect the charger.

Note: This product uses a lithium ion, rechargeable, non-replaceable battery. Under normal use, expected life of the rechargeable battery is approximately 500 charges.

Note: Your battery is designed to last the life of the product. It should only be removed by a recycling facility. ANY ATTEMPT TO REMOVE OR REPLACE YOUR BATTERY WILL DAMAGE THE PRODUCT.

turn it on & off

To turn your headphones on and off, slide the Power switch to the ON position. The main indicator light flashes blue 3 times when turned on (or purple when turned off).



Note: Your headphones will not turn on while charging.

connect wirelessly

To listen to your music via Bluetooth® wireless connection, as well as make and receive handsfree calls, you need to pair (link) your headphones with your Bluetooth phone and/or music player.

- 1 Turn off any Bluetooth devices previously paired with your headphones.
- 2 Turn on the Bluetooth feature on your Bluetooth phone or music player.
- 3 Turn on your headphones.

The main indicator light is steadily lit in blue to indicate the headphones are in discoverable mode.

- 4 Place phone or music player in Bluetooth search mode.

The phone or music player searches for your headphones.

- 5 Select **Motorola S7-HD** from the search results on your phone or music player.
- 6 Select **OK** or **Yes** to pair your headphones with your phone or music player.
- 7 If prompted, enter **0000** for passkey.

connect wirelessly

When your headphones successfully pair and connect with your phone or music player, the main indicator light flashes blue and purple. Music playing from your connected music source is heard on your headphones.

Notes:

- After successfully pairing your headphones and Bluetooth device, you don't need to repeat these steps. For each use, make sure that your headphones are turned ON, and your device's Bluetooth feature is ON.
- Some music devices will automatically attempt to play music when the S7-HD re-connects to it.

control your tunes

Playback controls on your headphones can be used when listening to wireless music streaming from a Bluetooth-enabled music player that also provides remote control capabilities (AVRCP).

Press—play/pause music

Press and hold—stop music



Rotate forward and release—skip to next track

Rotate backward and release—skip to previous track

Rotate forward and hold—fast-forward track

Rotate backward and hold—rewind track

When remote control capabilities are not supported by your music player, the S7-HD simply acts as headphones, and music should be controlled from your music player.

With some music players, previous track must be rotated twice to go back to the previous song. Refer to your music player's manual for specific music control features.

crank it up

To adjust music volume, use the Volume Control Wheel on your headphones.



Rotate forward and release—increase volume (step)

Rotate backward and release—decrease volume (step)

Rotate forward and hold—increase volume (continuous)

Rotate backward and hold—decrease volume (continuous)

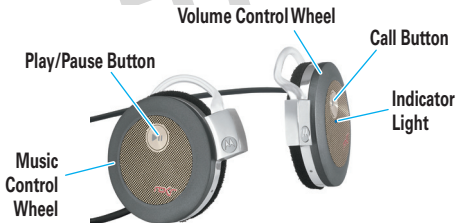
You'll hear a tone when maximum or minimum volume is reached on your headphones.

Note: The volume setting on your music player may impact volume on your headphones.

handsfree calls

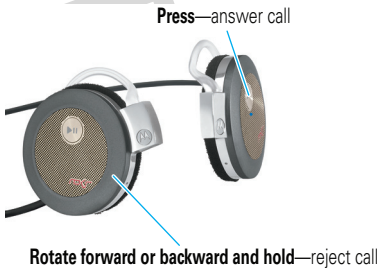
To make and receive calls using the headphones, a Bluetooth handsfree (HFP) connection must be established with your phone (see “connect wirelessly” on page 6 for details).

You'll use these controls and indicators on your headphones when making and receiving handsfree calls.



receive a call

When there's an incoming call, the main indicator light flashes quickly in blue on your headphones, and you hear a ring tone over your headphones. If music is playing when a call is received, the music pauses or mutes, depending on your music player and connection setup.



while on a call

When a call is active, the main indicator light slowly pulses in blue on your headphones.

Press—mute/unmute call
(indicator light pulses
in purple while muted)

Press—end call



Rotate forward and release—increase call volume (step)

Rotate backward and release—decrease call volume (step)

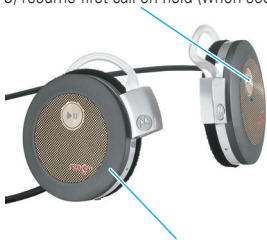
Rotate forward and hold—increase call volume (continuous)

Rotate backward and hold—decrease call volume (continuous)

while on a call

When there's a second incoming call, the main indicator light flashes quickly in blue on your headphones and you hear an alert.

Press—1) answer second call (first call is placed on hold),
2) end second call (first call resumes), or
3) resume first call on hold (when second caller hangs up)



Rotate forward or backward and hold—reject second incoming call*

* If your phone supports this feature

On most phones, if you end the second call using your phone or headphones, the call on hold instantly resumes. If the remote side of the second call ends the call, the original call remains on hold until you resume the call, either by pressing and releasing the Call button on your headphones or by using the phone to resume the call.

make a call

Using the headphones to make a call, you can redial the last dialed number or make a voice dial call (if your phone supports this feature). When making a voice dial call, the microphone on the headphones is enabled, and you hear a prompt from your phone.

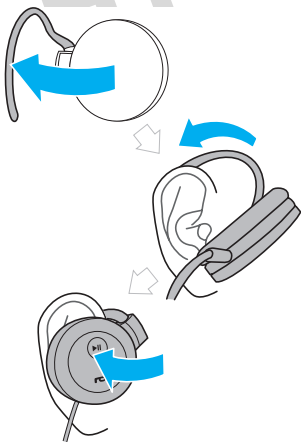
Press—make a voice dial call (you hear a prompt from your phone)

Press and hold—redial last number



wear your headphones

To wear your headphones, first pull open ear clip, then slide the bottom of the ear clip above the top of your ear and rotate it around your ear until it fits comfortably, and finally rotate headphones gently towards your ear. Adjust the back of the customizable ear clip to fit the shape of your ear..



check your battery

To check your headphone's battery charge level, rotate and hold Volume Control Wheel in either direction and press the Call button. The indicator light displays charge status until the Volume wheel is released.

Main Indicator Light	Battery Charge Status
Red	Less than 30% charge
Yellow	Between 30% and 70% charge
Green	More than 70% charge

When your headphones are in a low battery charge state, the main indicator light flashes quickly in red, and a tone is repeated every minute.

headphones status

The main indicator light on your speaker displays current status of Bluetooth wireless connection(s) to your phone and/or music player.

Main Indicator Light	Wireless Status
steady blue	pairing mode
long blue flash	standby (handsfree connection only)
long yellow flash	standby (streaming music connection only)
long green flash	standby (both handsfree and streaming music connection)
quick blue flash	incoming/outgoing call
long blue pulse	connected on a call
long purple pulse	connected call muted
three green flashes	started/paused music player
long green pulse	music streaming (with handsfree connection active)

headphones status

Main Indicator Light	Wireless Status
long yellow pulse	music streaming (without handsfree connection active)
two yellow flashes	SRS WOW HD on/off
three yellow flashes	stopped music player
slow red flash	idle (not connected to a device)

tips & tricks

multi-point (two device) connection

To connect to a phone and music device at the same time:

- 1** Pair and connect to your phone first (see page 6).
- 2** Turn off your phone and your headphones.
- 3** Turn your headphones back on.

The Bluetooth indicator flashes to indicate the headphones are in discoverable mode.

- 4** Turn on your music device. Make sure the Bluetooth feature is turned on in the device.

The music device searches for your headphones.

- 5** Complete steps 5 through 7 on page 6 to pair and connect your music device and headphones.
- 6** Turn off your headphones.
- 7** Turn your phone back on, and make sure the Bluetooth feature is turned on in both the phone and music device.
- 8** Turn your headphones back on. It should now connect to both devices.

tips & tricks

pairing tips

- **To initiate pairing (discoverable) mode manually** when your headphones are already powered on, press and hold both Call and Play/Pause buttons at the same time.
- **To clear the paired devices list in your headphones**, press and hold Play/Pause button while sliding Power switch on. This also **turns SRS WOW HD on** and **reinitializes volume to default level**.

audio enhancements

enhance audio with SRS WOW HD

SRS WOW HD is an audio enhancement technology that provides better width and improved bass and definition control. This feature is enabled on your headphones at purchase.

If your music player also has SRS or any other sound enhancement technology, best audio results may be achieved if the audio enhancement feature is enabled on only either the music source or the headphones (but not both).

Note: It is recommended to turn off the equalizer feature on your music player.

To disable the SRS WOW HD audio enhancement feature on your headphones, press and hold the Play/Pause and rotate to Rewind at the same time until you hear a tone and the main indicator light flashes yellow twice. To re-enable the SRS feature, perform the same action.

tech speak

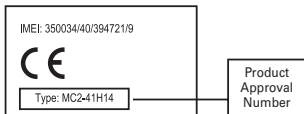
Here are some helpful Bluetooth terms to know:

Profile	An application (or use case) through which different Bluetooth devices can communicate with each other. Both devices must support the same profile in order to communicate with one another for the application.
A2DP (Advanced Audio Distribution Profile)	Profile for streaming dual-channel stereo audio from a stereo music player to your headphones.
AVRCP (Audio Video Remote Control Profile)	Profile for controlling streaming audio/video playback on remote devices. Typically used with A2DP devices for next/previous track selection and pause/play functions.
HFP (Hands-Free Profile)	Profile for making and receiving calls from a hands-free device.

European Union Directives Conformance Statement

CE Hereby, Motorola declares that this product is in compliance with:

- The essential requirements and other relevant provisions of Directive 1999/5/EC.
- All other relevant EU Directives.



The above gives an example of a typical Product Approval Number.

You can view your product's Declaration of Conformity (DoC) to Directive 1999/5/EC (to R&TTE Directive) at www.motorola.com/rtte. To find your DoC, enter the product Approval Number from your product's label in the "Search" bar on the web site.

Motorola, Inc.
Consumer Advocacy Office
1307 East Algonquin Road
Schaumburg, IL 60196

www.motorola.com

www.motorola.com/bluetoothsupport

1-877-MOTOBLU (Motorola Bluetooth Support)

1-800-331-6456 (United States)

1-888-390-6456 (TTY/TDD United States for hearing impaired)

1-800-461-4575 (Canada)

The use of wireless devices and their accessories may be prohibited or restricted in certain areas. Always obey the laws and regulations on the use of these products.

MOTOROLA and the Stylized M Logo are registered in the US Patent & Trademark Office. The Bluetooth trademarks are owned by their proprietor and used by Motorola, Inc. under license. SRS and WOW HD are trademarks of SRS Labs, Inc. All other product and service names are the property of their respective owners.

© 2008 Motorola, Inc. All rights reserved.

Bluetooth QD ID: Bxxxxxx

Manual Number: 68000201611-A

www.motorola.com

