

MOTOROLA WX292 & WX294

LIFE. M. POWERED.

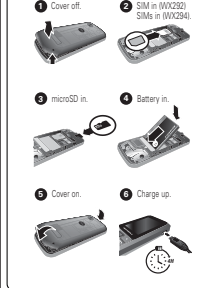
WELCOME

Whether you're a talker, a texter, or just love listening to music or taking photos and videos on the move, the WX292 & WX294 does it all.
Note: WX292 uses a single SIM card, WX294 can be used with one or two SIM cards.
 We've crammed all the main features of your phone into this handy guide—you can even take the guide with you. If you'd like even more information about how to use your new WX292 or WX294, visit www.motorola.com/support. So, let's go.
Note: Your phone may not appear exactly as the images in this guide. However, all key locations, sequences, and functions are the same.
Caution: Before assembling, charging, or using your phone for the first time, please read the important safety, regulatory and legal information in this guide.

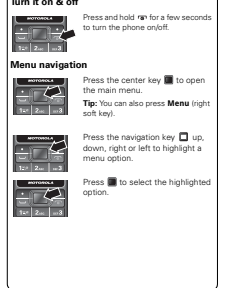
YOUR PHONE



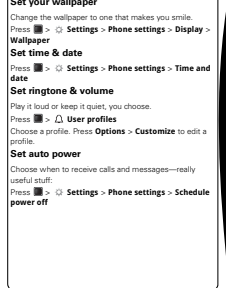
LET'S GO



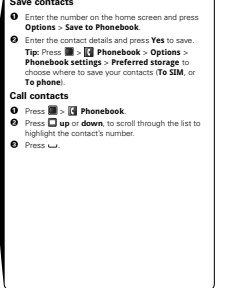
BASICS



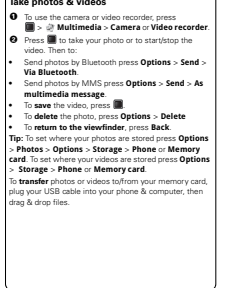
PERSONALIZE



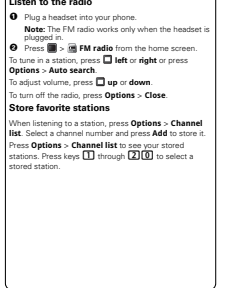
CONTACTS



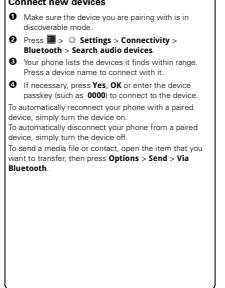
PHOTOS & VIDEOS



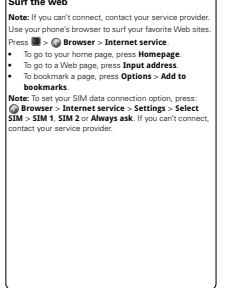
RADIO



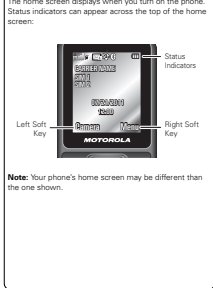
BLUETOOTH™



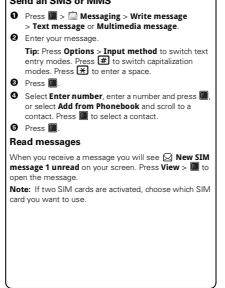
WEB



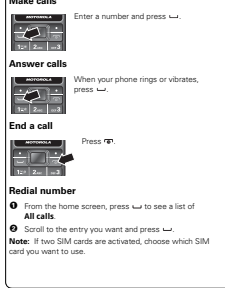
DISPLAY



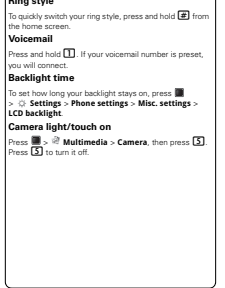
MESSAGES



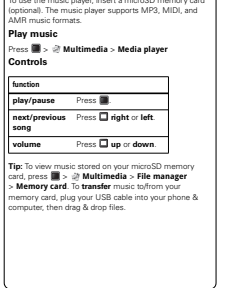
CALLS



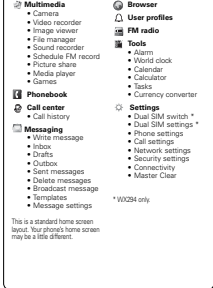
TIPS & TRICKS



MUSIC



MENU MAP



SAR

This product meets the applicable SAR limits of 1.6 W/kg (SAR) and 2.0 W/kg (EIRP). The limits and guidelines include a substantial safety margin designed to assure the safety of all persons, regardless of age and health. The highest SAR values measured for this device are listed in the legal and safety information packaged with your product.
Note: When carrying the product or using it while worn on your body, either use an approved accessory such as a holster or otherwise maintain a minimum of 2.5 cm (1 inch) with the body to ensure compliance with RF exposure requirements. Note that the product may be transmitting even if you are not making a phone call.

68015687A01-A

