

## AT A GLANCE

Your MOTOROLA RAZR™ M—surfs faster, displays bigger, in a super compact 4G LTE smartphone.

- **Display:** Edge to edge, 4.3" display in compact design.
- **Speed:** 4G LTE speeds and Chrome browser.
- **Design:** Premium protective materials—DuPont™ KEVLAR® fiber, Corning® Gorilla® Glass 2.
- **Best of Google:** Google Maps with Navigation™ Beta, Google Play™, Voice Action.

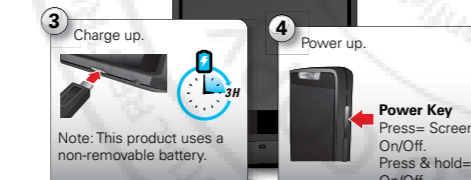
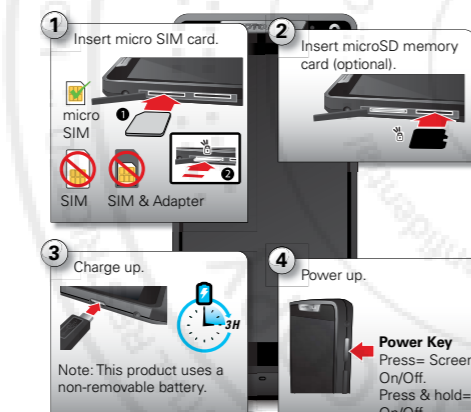


## CHARGE UP

SIM in, memory card in (optional), charge up, then power up.

**Caution:** Before using your phone, please read the safety, regulatory and legal information provided with your product.

**Note:** Certain apps and features may not be available in all countries.

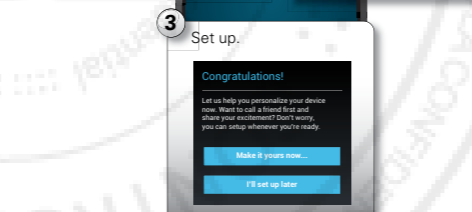


## REGISTER

After you power up, create or log into a Google™ account to access all of your Google Mobile™ services. Registration is secure and only takes a few minutes.

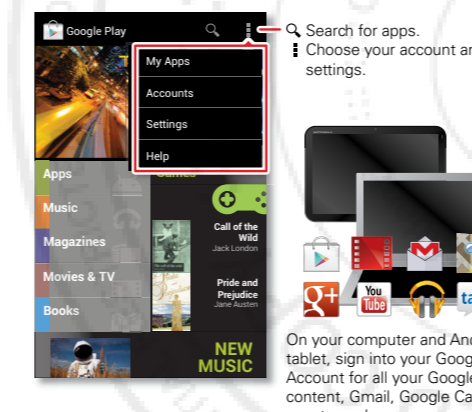
**Tip:** To get your contacts, visit [www.motorola.com/transfercontacts](http://www.motorola.com/transfercontacts).

**Note:** This phone supports apps and services that use a lot of data, so make sure your data plan meets your needs. Contact your service provider for details.



## THE BEST OF GOOGLE™

Your whole world, organized and accessible. Browse, locate, watch, shop, play, work...Google has you covered. One account, access everywhere—phone, tablet, computer.



## HOME SCREEN & APPS

Start from the home screen to explore apps and more.

- **Home screen:** You'll see the home screen when you turn on your phone or touch Home.
- **App & widget list:** To show all of your apps and widgets, touch Apps.
- **More:** To download more apps and widgets, touch Apps > Play Store.



## CONTROL & CUSTOMIZE

Take control of your phone:

- **Touch:** It's all in the touch. Simple gestures and touch keys to move about.
- **Speak:** Tell your phone what you want—touch Apps > Voice Commands.
- **Customize:** Change notifications, or display settings—flick the status bar down and touch.

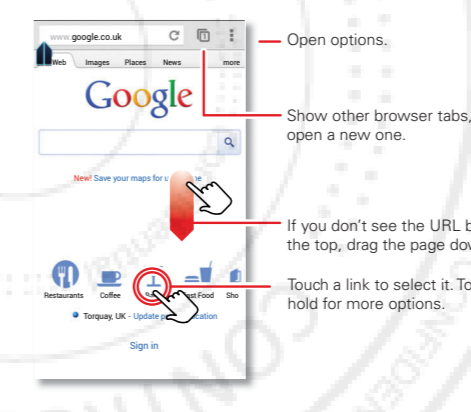


## CHROME

A browser that combines minimal design with sophisticated technology to make the web faster, safer, and easier.

**Find it:** Apps > Chrome

- **Go to a website:** Touch the address bar at the top of a page and enter an address.
- **Add or open bookmarks:** Open the address bar (flick down), then touch Menu > Bookmarks.



## GET MORE!

There's more help, updates, and information right here:

- **Tutorials & answers:** Touch Apps > Guide Me to get walk-through tutorials. For **HELP TOPICS**, touch the tab.
- **Updates:** Get phone updates, PC software, online help, guides, and more at [www.motorola.com/myrazrm](http://www.motorola.com/myrazrm).
- **Accessories:** Find accessories for your phone at [www.motorola.com/mobility](http://www.motorola.com/mobility).
- **Apps:** Touch Apps > Play Store.
- **News:** Get the latest news, apps, tips & tricks, videos and so much more—join us on:
  - YouTube™ [www.youtube.com/motorola](http://www.youtube.com/motorola)
  - Facebook™ [www.facebook.com/motorola](http://www.facebook.com/motorola)
  - Twitter [www.twitter.com/motomobile](http://www.twitter.com/motomobile)
  - Google+ [www.google.com/+](http://www.google.com/+)



Grab a barcode scanner from Google Play, and scan this code.



This product meets the applicable SAR limits of 1.6 W/kg (FCC & IC) and 2.0 W/kg (ICNIRP). The limits and guidelines include a substantial safety margin designed to assure the safety of all persons, regardless of age and health. The highest SAR values measured for this device are listed in the regulatory information packaged with your product.

**Note:** When carrying the product or using it while worn on your body, either use an approved accessory such as a holster or otherwise maintain a distance of 2.5 cm (1 inch) from the body to ensure compliance with RF exposure requirements. Note that the product may be transmitting even if you are not making a phone call.



## Regulatory Information

### For Your Safety

Before assembling, charging or using your mobile device for the first time, please read the important product safety and legal information provided with your product.

### Specific Absorption Rate (FCC & IC)

#### YOUR MOBILE DEVICE MEETS FCC AND IC LIMITS FOR EXPOSURE TO RADIO WAVES.

Your mobile device is a radio transmitter and receiver. It is designed not to exceed the limits for exposure to radio waves (radio frequency electromagnetic fields) adopted by the Federal Communications Commission (FCC) and Industry Canada (IC). These limits include a substantial safety margin designed to assure the safety of all persons, regardless of age and health. The radio wave exposure guidelines use a unit of measurement known as the Specific Absorption Rate, or SAR. The SAR limit for mobile devices is 1.6 W/kg. Tests for SAR are conducted using standard operating positions with the device transmitting at its highest certified power level in all tested frequency bands. The highest SAR values under the FCC and IC guidelines for your device model are listed below.

Head SAR	2.4 GHz, Wi-Fi, Bluetooth	1.06 W/kg
Body-worn SAR	GSM 850, Wi-Fi, Bluetooth	0.40 W/kg

During use, the actual SAR values for your device are usually well below the values stated. This is because, for purposes of system efficiency and to minimize interference on the network, the operating power of your mobile device is automatically decreased when full power is not needed for the call. The lower the power output of the device, the lower its SAR value. If you are interested in further reducing your RF exposure then you can easily do so by limiting your usage or simply using a hands-free kit to keep the device away from the head and body. Additional information can be found at [www.motorola.com/rfhealth](http://www.motorola.com/rfhealth).

### Specific Absorption Rate (ICNIRP)

#### YOUR MOBILE DEVICE MEETS INTERNATIONAL GUIDELINES FOR EXPOSURE TO RADIO WAVES.

Your mobile device is a radio transmitter and receiver. It is designed not to exceed the limits for exposure to radio waves (radio frequency electromagnetic fields) recommended by international guidelines. The guidelines were developed by an independent scientific organization (ICNIRP) and include a substantial safety margin designed to assure the safety of all persons, regardless of age and health. The radio wave exposure guidelines use a unit of measurement known as the Specific Absorption Rate, or SAR. The SAR limit for mobile devices is 2 W/kg. Tests for SAR are conducted using standard operating positions with the device transmitting at its highest certified power level in all tested frequency bands. The highest SAR values under the ICNIRP guidelines for your device model are listed below.

Head SAR	2.4 GHz, Wi-Fi, Bluetooth	0.47 W/kg
Body-worn SAR	GSM 850, Wi-Fi, Bluetooth	0.30 W/kg

During use, the actual SAR values for your device are usually well below the values stated. This is because, for purposes of system efficiency and to minimize interference on the network, the operating power of your mobile device is automatically decreased when full power is not needed for the call. The lower the power output of the device, the lower its SAR value. If you are interested in further reducing your RF exposure then you can easily do so by limiting your usage or simply using a hands-free kit to keep the device away from the head and body. Additional information can be found at [www.motorola.com/rfhealth](http://www.motorola.com/rfhealth).

## European Union Directives Conformance Statement

The following CE compliance information is applicable to Motorola mobile devices that carry one of the following CE marks:

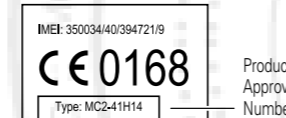
CE 0168

CE 0168

Hereby, Motorola declares that this product is in compliance with:

- The essential requirements and other relevant provisions of Directive 1999/5/EC
- All other relevant EU Directives

For products that support Wi-Fi 802.11a (as defined in your product information): This device is restricted to indoor use when operating in the 5.15 to 5.25 GHz (802.11a) Wi-Fi frequency band. The following gives an example of a typical Product Approval Number:



Product Approval Number

You can view your product's Declaration of Conformity (DoC) to Directive 1999/5/EC (to R&TTE Directive) at [www.motorola.com/rte](http://www.motorola.com/rte) (in English only). To find your DoC, enter the Product Approval Number from your product's label in the "Search" bar on the website.

## FCC Notice to Users

The following statement applies to all products that bear the FCC logo and/or FCC ID on the product label.

This equipment has been tested and found to comply with the limits for a Class B digital device, pursuant to part 15 of the FCC Rules. See 47 CFR Sec. 15.105(b). These limits are designed to provide reasonable protection against harmful interference in a residential installation. This equipment generates, uses and can radiate radio frequency energy and, if not installed and used in accordance with the instructions, may cause harmful interference to radio communications. However, there is no guarantee that interference will not occur in a particular installation. If this equipment does cause harmful interference to radio or television reception, which can be determined by turning the equipment off and on, the user is encouraged to try to correct the interference by one or more of the following measures:

- Reorient or relocate the receiving antenna.
- Increase the separation between the equipment and the receiver.
- Connect the equipment to an outlet on a circuit different from that to which the receiver is connected.
- Consult the dealer or an experienced radio/TV technician for help.

This device complies with part 15 of the FCC Rules. Operation is subject to the following two conditions: (1) This device may not cause harmful interference, and (2) this device must accept any interference received, including interference that may cause undesired operation. See 47 CFR Sec. 15.19(a)(3).

Motorola has not approved any changes or modifications to this device by the user. Any changes or modifications could void the user's authority to operate the equipment. See 47 CFR Sec. 15.21. For products that support Wi-Fi 802.11a (as defined in product information): In the United States, do not use your device outdoors while connected to an 802.11a Wi-Fi network. The FCC prohibits such outdoor use since frequencies 5.15-5.25 GHz can cause interference with Mobile Satellite Services (MSS). Public Wi-Fi access points in this range are optimized for indoor use.

## Software Notices

**Warning against unlocking the bootloader or altering a product's operating system software:** Motorola strongly recommends against altering a product's operating system, which includes unlocking the bootloader, rooting a device or running any operating software other than the approved versions issued by Motorola and its partners. Such alterations may permanently damage your product, cause your product to be unsafe and/or cause your product to malfunction. In such cases, neither the product nor any damage resulting therefrom will be covered by warranty.

**Important FCC information:** You must not make or enable any changes to the product that will impact its FCC grant of equipment authorization. The FCC grant is based on the product's emission, modulation, and transmission characteristics, including: power levels, operating frequencies and bandwidths, SAR levels, duty-cycle, transmission modes (e.g., CDMA, GSM), and intended method of using the product (e.g., how the product is held or used in proximity to the body). A change to any of these factors will invalidate the FCC grant. It is illegal to operate a transmitting product without a valid grant.

## Copyright & Trademarks

Certain features, services and applications are network dependent and may not be available in all areas; additional terms, conditions and/or charges may apply. Contact your service provider for details.

All features, functionality, and other product specifications, as well as the information contained in this guide, are based upon the latest available information and believed to be accurate at the time of printing. Motorola reserves the right to change or modify any information or specifications without notice or obligation.

**Note:** The images in this guide are examples only. MOTOROLA and the Stylized M Logo are trademarks or registered trademarks of Motorola Trademark Holdings, LLC. Android, Google and other trademarks are owned by Google Inc. All other product or service names are the property of their respective owners. © 2012 Motorola Mobility LLC. All rights reserved. Manual Number: 68XXXX605-A



MOTOROLA

MOTOROLA  
RAZR™ M

EN