
Temporary Confidentiality Requested

Exhibit 8: Draft User's Manual -- 47 CFR 2.1033(b)(3) and RSP100, Section 5.

The attached User's Manual is the final production-intended version of the generic Motorola International English User Manual. This guide will be adapted to carrier-specific versionsⁱ, but the key information herein will be retained. Translations into other languages will also be done to support the needs of other markets. Minor revisions may be made to these manuals, prior to and subsequent to, placing this product onto the market.

Note that this device is not intended for distribution into the United States or its territories. The device may roam into the US. The User Guide provided is the English language version of the guide that will be distributed with this device. It does not include the IEEE SAR.

ⁱ Motorola Mobility attests that the User's Guide provided with product shipping into Canada will provide any required Industry Canada notices and/or statements in both English and French, per the requirements of RSS-Gen.

At a glance

Your new Moto G has pretty much everything—a big, brilliant display, stereo speakers, camera, Internet, and more. You can even change the back cover for a new look with Motorola Shells.

Note: You can purchase additional Motorola Shells separately, availability varies by country.

Caution: Before using your phone, please read the safety, regulatory and legal information provided with your product.

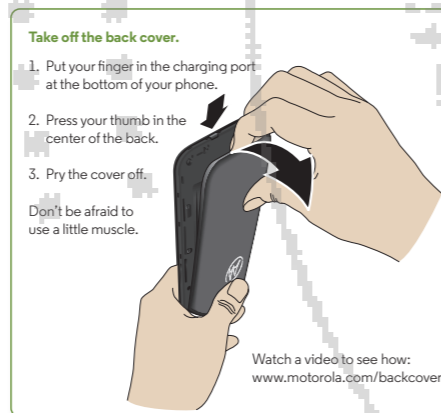
Note: Your phone may look a little different.



Remove the back cover

Take off the back cover to insert the SIM and memory cards.

Caution: Don't use tools to remove the cover—doing so may damage the battery and could cause burning or injury.

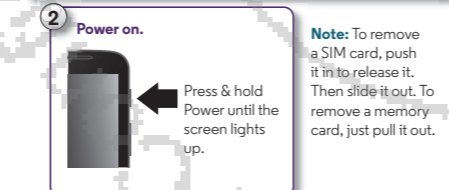
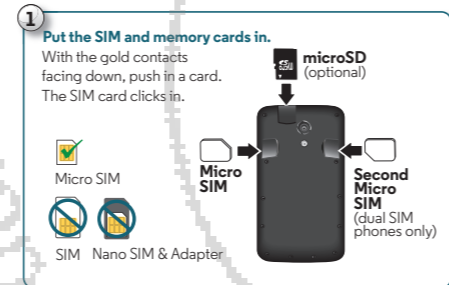


Put in the SIM & memory cards, then power on

Caution: Make sure you use the correct size SIM card, and don't use adapters with your SIM card.

Dual SIM settings (for Dual SIM phones only)

To set up a dual SIM phone, insert both SIM cards, turn on your phone, and follow the prompts. To finish dual SIM setup, drag down the status bar at the top of the home screen and touch **Welcome to your dual SIM**.



Set up

Just select your language and follow the screen prompts to get started.

You'll be asked to connect to a WLAN network. Then to accept privacy settings, give your consent to data usage and finally the option to start migrate.

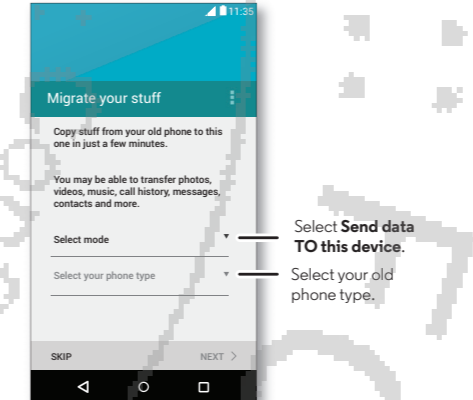


Migrate

Copying your personal stuff from your old phone to your new phone with Motorola Migrate is easy.

Touch Apps (⋮) → **Migrate** and select mode and your old phone type. Then follow the screen prompts to migrate.

Tip: You'll be asked to download the Motorola Migrate app on to your old phone.



Help & more

Get answers, updates, and info:

- Help is here:** Touch Apps (⋮) → **Help** to get walk-through tutorials, how-tos, and FAQs, right on your phone.
- All about Moto G:** Get software, user guides, and more at www.motorola.com/mymotog.
- Accessories:** Get accessories for your phone at www.motorola.com/mobility.
- More apps:** Touch Apps (⋮) → **Store** to download apps.



let's get started



SAR This product meets the applicable national or international RF exposure guidance (SAR guideline) when used normally against your head or, when worn or carried, at a distance of 1.5 cm from the body. The SAR guideline includes a considerable safety margin designed to assure the safety of all persons, regardless of age and health.

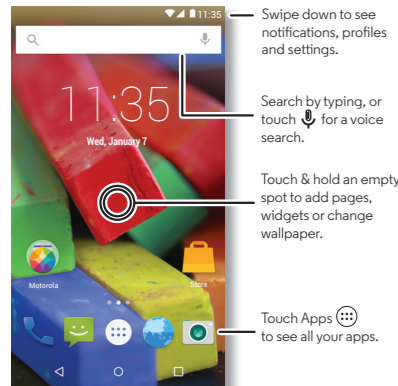


Home screen & settings

From the home screen, you can explore apps, check notifications, speak commands, and more.

- **Add a shortcut to a home screen page:** Touch Apps (⋮), touch and hold an app, then drag it to your home screen, or to the right side of the home screen to add a new page.
- **Customize:** To change your WLAN, brightness, and more, drag the status bar down with two fingers. For even more settings, touch ⚙️.

Note: To get more apps, touch 🛒 Store.



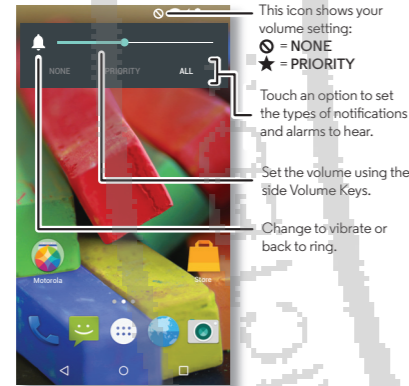
Volume

Press the side Volume Key up or down to select a ringer volume from high to vibrate 📴.

Touch an option for more settings:

- **All:** Receive all notifications and alarms.
- **Priority:** Touch ⚙️ to select which interruptions to receive. You will always hear alarms. Set when you want to be in this mode, or choose indefinitely.
- **None:** Turn off all sounds and alarms. Override sound settings from other apps. Set how long to stay in this mode, or choose indefinitely. You stay in a mode until you select a different one.

Tip: Touch 🔔 to switch to vibrate or 📴 to switch to ringer on.



Motorola Assist

Motorola Assist recognizes when you shouldn't be bothered and gives you hands-free options.

When you see a notification in the status bar, flick down to learn more.

Find it: Apps (⋮) → 🗨️ Assist

Note: Adjusting your volume setting to **None** will effect certain Assist features.



Camera

Take clear photos and share them easily.

Find it: Apps (⋮) → 📷 Camera

- **See it:** Swipe left for your photo gallery (🖼️ Gallery).
- **Share it:** View a photo or video from your gallery, then touch Share (🔗).

Tip: Drag up or down with one finger to zoom.

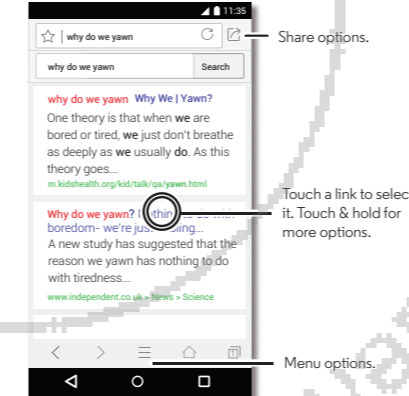


Browser

Find the info you want, whenever you want.

Find it: Apps (⋮) → 🌐 Browser

- **Go to a webpage:** Touch the address bar at the top of a page and enter an address.
- **Add a bookmark:** Touch Menu (☰) → Add bookmark.
- **Open a bookmark:** Touch Menu (☰) → Bookmarks.



Store

Store is a digital content experience where you can find and enjoy your favorite Android apps and games.

Find it: Apps (⋮) → 🛒 Store

For Your Safety

Before assembling, charging or using your mobile device for the first time, please read the important product safety and legal information provided with your product.
Warning: Don't try to remove or replace the battery yourself—doing so may damage the battery and could cause burning and injury. If your phone becomes unresponsive, try a reboot—press and hold the Power key until the screen goes dark and your phone restarts.

Specific Absorption Rate (ICNIRP)

YOUR MOBILE DEVICE MEETS INTERNATIONAL GUIDELINES FOR EXPOSURE TO RADIO WAVES.

Your mobile device is a radio transmitter and receiver. It is designed not to exceed the limits for exposure to radio waves (radio frequency electromagnetic fields) recommended by international guidelines. The guidelines were developed by an independent scientific organization (ICNIRP) and include a substantial safety margin designed to assure the safety of all persons, regardless of age and health. The radio wave exposure guidelines use a unit of measurement known as the Specific Absorption Rate, or SAR. The SAR limit for mobile devices is 2 W/kg. Tests for SAR are conducted using standard operating positions with the device transmitting at its highest certified power level in all tested frequency bands*. The highest SAR values under the ICNIRP guidelines for your device model are listed below:

Model XT1077

Head SAR	xxxxxxx, Wi-Fi, Bluetooth	x.xx W/kg
Body-worn SAR	xxxxxxx, Wi-Fi, Bluetooth	x.xx W/kg

Model XT1079

Head SAR	xxxxxxx, Wi-Fi, Bluetooth	x.xx W/kg
Body-worn SAR	xxxxxxx, Wi-Fi, Bluetooth	x.xx W/kg

This data is in compliance with GB21288-2007 requirements. During use, the actual SAR values for your device are usually well below the values stated. This is because, for purposes of system efficiency and to minimize interference on the network, the operating power of your mobile device is automatically decreased when full power is not needed for the call. The lower the power output of the device, the lower its SAR value. If you are interested in further reducing your RF exposure then you can easily do so by limiting your usage or simply using a hands-free kit to keep the device away from the head and body. Additional information can be found at www.motorola.com/rfhealth. * The tests are carried out in accordance with [CENELEC EN50360] [IEC standard PT62209-1].

Usage

This phone supports apps and services that may use a lot of data, so make sure your data plan meets your needs. Contact your service provider for details. Certain apps and features may not be available in all countries.

Copyright & Trademarks

Certain features, services and applications are network dependent and may not be available in all areas; additional terms, conditions and/or charges may apply. Contact your service provider for details. All features, functionality, and other product specifications, as well as the information contained in this guide, are based upon the latest available information and believed to be accurate at the time of printing. Motorola reserves the right to change or modify any information or specifications without notice or obligation. **Note:** The images in this guide are examples only. MOTOROLA and the Stylized M Logo are trademarks or registered trademarks of Motorola Trademark Holdings, LLC. Google, Android, Google Play and other marks are trademarks of Google Inc. The Android robot is reproduced or modified from work created and shared by Google and used according to terms described in the Creative Commons 3.0 Attribution License. All other product or service names are the property of their respective owners. The manufacture of this product is authorized by Motorola Mobility LLC. © 2014 Motorola Mobility LLC. All rights reserved. Product ID: Moto X (Model XT1077/XT1079) Manual Number: 68XXXXXX660-A