

en



read me

At a glance

Let's get started. We'll guide you through startup and tell you about your phone.

Note: Software updates happen frequently, so your phone may look a little different.



Remove the back cover

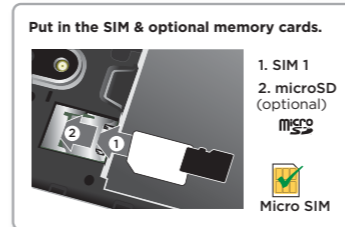
If you need to insert SIM and memory cards, remove the back cover.

Caution: Don't use tools to remove the cover—doing so may damage your phone.



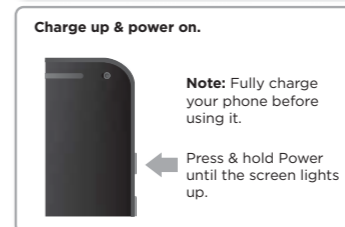
Remove the battery & put in cards

Caution: Make sure you use the correct size SIM card and don't cut the SIM card. Don't use tools to remove the battery—doing so may damage your battery or your phone.



Put on the cover & power on

Put on the back cover. Charge your phone fully and turn the power on. Select your language and follow the screen prompts to get started.



Protect your phone with Moto Care Protection.

Visit motorola.com/protectmydevice for more information. (U.S. only)



This product meets the applicable national or international RF exposure guidance (SAR guideline) when used normally against your head or, when worn or carried, at a distance of 10 cm from the body. The SAR guideline includes a considerable safety margin designed to assure the safety of all persons, regardless of age and health.

To view the SAR values for your phone, visit <https://motorola.com/sar>. To view additional SAR information on your phone, tap **Apps > Settings > Legal information > RF information**. To view the information on the web, visit www.motorola.com/rfhealth

motorola.com

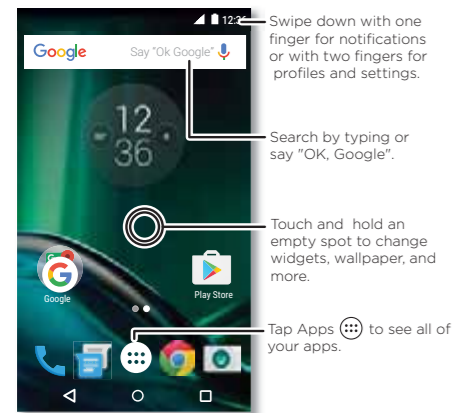


Caution: Before using your phone, please read the safety, regulatory and legal information provided with your product.

Home screen & settings

From the home screen, you can explore apps, check notifications, speak commands, and more.

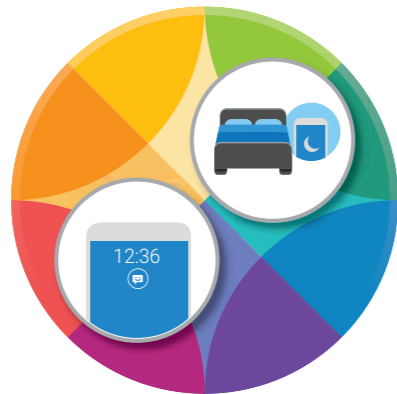
- **Add a shortcut:** Tap Apps (☰), tap and hold an app, then drag it to your home screen.
- **Settings:** To change your Wi-Fi, display brightness, and more, swipe the status bar down with two fingers. To open more settings, tap ⚙️.
- **Share your phone:** To add a guest user, swipe the status bar down with two fingers and tap 👤.



Discover your Moto app

Find it: Apps (☰) > > **Display**

See messages, calls, and other notifications—even if your phone is asleep using **Moto Display**.



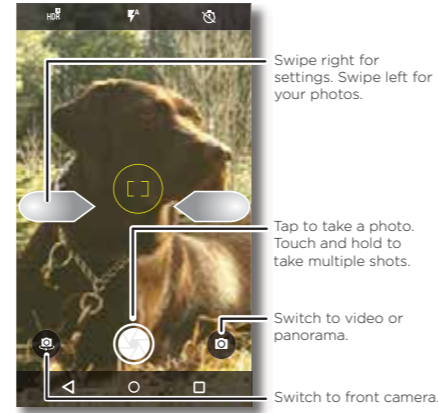
Note: Your phone may not have all features.

Photos

Take crisp, clear photos.

- **Launch it:** Tap **Camera**.
- **Take a photo:** Tap to take a photo.
- **See it:** Swipe left for your photo gallery.
- **Share it:** View a photo or video from your gallery, then tap .

Tip: Swipe right for effects and settings, like resolution.



Help & more

Get answers, updates, and info:

- **Help is here:** Tap Apps (☰) > **Help** to get walk-through tutorials, how-tos, or FAQs, right on your phone.
- **Everything Moto G:** Get software, user guides, and more at www.motorola.com/mymotog.
- **Get apps:** Tap Apps (☰) > **Play Store** to buy and download apps.
- **News:** Here's how to find us:
 - ▶ YouTube™ www.youtube.com/motorola
 - ▶ Facebook™ www.facebook.com/motorola
 - ▶ Twitter www.twitter.com/moto
 - ▶ Google+™ www.google.com/+Motorola/posts

Where is my legal, safety and regulatory information?

In order to provide you with better access to this important information, we've made the materials accessible from the phone's settings menu and on the web. Review these materials prior to using your device. To access the materials from a connected phone, go to **Settings** > **Legal information**, and select a topic. To access the materials on the web, visit www.motorola.com/device-legal.

Battery Safety

Before assembling, charging or using your mobile device for the first time, please read the important product safety and legal information provided with your product. If your mobile device becomes unresponsive, try a reboot—press and hold the Power button until the screen goes dark and your device restarts. Your mobile device uses a removable battery. Only use Motorola Original batteries for safety and best performance.

Warning:

- Don't use tools, sharp objects, or excessive force to insert or remove the battery. This may damage the battery and may cause burning and injury.
- Don't try to take apart or fix your battery. This may damage the battery and may cause burning and injury.
- Don't crush, bend, or expose your battery or mobile device to heat or liquid. This may damage the battery and may cause burning and injury.

Caution about High Volume Usage

Warning: To prevent possible hearing damage, do not listen at high volume levels for long periods.



Disposal & Recycling

Help do your part! Please don't dispose of mobile devices or electrical accessories (such as chargers, headsets, or batteries) with your household waste. Product packaging and product guides should only be disposed of in accordance with national collection and recycling requirements. For details on approved national recycling schemes and Motorola recycling activities, go to: www.motorola.com/recycling.



Usage

This phone supports apps and services that may use a lot of data, so make sure your data plan meets your needs. Contact your service provider for details. Certain apps and features may not be available in all countries.

Regulatory Information

To view the Regulatory ID (such as FCC ID) for this device, on the phone, go to **Settings** > **Legal information** > **Regulatory ID/Markings**, or visit www.motorola.com/device-legal.

Warranty

This product is covered by Motorola's limited warranty. To review the warranty on your phone, go to **Settings** > **Legal information** > **Warranty**, or visit motorola.com/device-legal. You may also obtain a copy of the warranty by contacting Motorola at: Motorola Mobility LLC, Attention Customer Service—Warranty Request, 222 West Merchandise Mart Plaza, Suite 1800, Chicago, IL 60654.

Arbitration & opt-out

Any controversy or claim arising out of or relating to any Motorola product will be resolved by binding arbitration, instead of in court, unless you opt-out. To opt-out, send a written rejection notice within 30 days of purchase that includes your name, address, phone number, device, and device serial number, and tells Motorola that you are rejecting this Arbitration provision to: Motorola Mobility LLC, 222 West Merchandise Mart Plaza, Suite 1800, Attn: Arbitration Provision Opt-Out, Chicago, IL 60654 or arbitrat@motorola.com. For more information on this arbitration provision, on your phone, go to **Settings** > **Legal information** > **Arbitration and Opt-out**, or visit www.motorola.com/device-legal.

Copyright & Trademarks

Certain features, services and applications are network dependent and may not be available in all areas; additional terms, conditions and/or charges may apply. Contact your service provider for details. All features, functionality, and other product specifications, as well as the information contained in this guide, are based upon the latest available information and believed to be accurate at the time of printing. Motorola reserves the right to change or modify any information or specifications without notice or obligation.

Note: The images in this guide are examples only. MOTOROLA, the stylized M logo, MOTO, and the MOTO family of marks are trademarks or registered trademarks of Motorola Trademark Holdings, LLC. Google, Android, Google Play and other marks are trademarks of Google Inc. microSD Logo is a trademark of SD-3C, LLC. All other product or service names are the property of their respective owners. © 2016 Motorola Mobility LLC. Product ID: Moto G⁺ Play (XT1607) Manual Number: 68018202001-A