



en

At a glance

Let's get started. We'll guide you through startup and tell you about your phone.

Note: Software updates happen frequently, so your phone may look a little different.

Put in the cards

Your phone might support using two SIM cards.

Caution: Make sure you use the correct size SIM cards and don't cut the SIM cards.



Nano SIM

Finish up

Connect your charger to charge your phone fully and turn the power on. Then select your language and follow the screen prompts to get started.

For phones that use two SIM cards, follow the prompts to set them up.

Control with one touch

Lock and unlock your phone, navigate your phone and make mobile purchases with just one touch.

- To find lock/unlock settings, swipe up ^ > **Settings > Security > Fingerprint.**
- To find navigation settings, swipe up ^ > **Moto > Moto Actions > One button nav.**

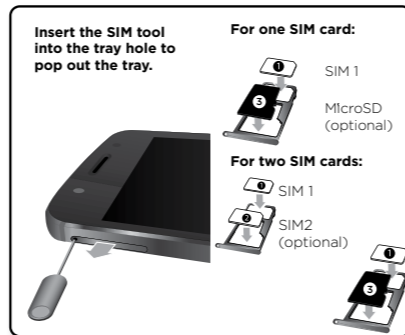
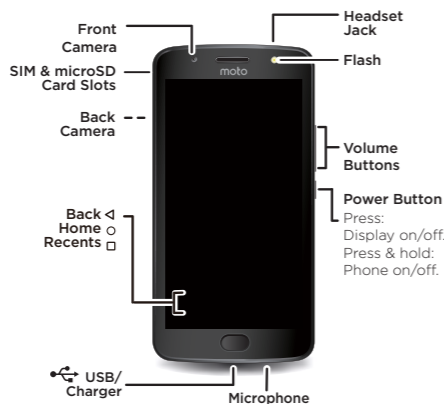
Note: Authorizing in-store purchases is not available in all areas (NFC and a mobile payment app are both required).



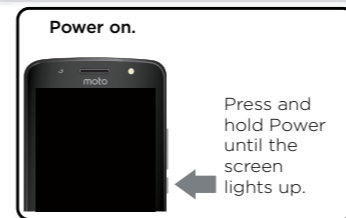
motog^{5S}

read me

Lenovo



Note: For two SIM cards devices, you need to choose either insert a SIM2 or MicroSD in the tray.



This product meets the applicable national or international RF exposure guidance (SAR guideline) when used normally against your head or, when worn or carried, at a distance of 1.0 cm from the body. The SAR guideline includes a considerable safety margin designed to assure the safety of all persons, regardless of age and health.




To view the SAR values for your phone, visit <https://motorola.com/sar>. To view additional SAR information on your phone, swipe up ^ > **Settings > Legal information > RF information.** To view the information on the web, visit www.motorola.com/rfhealth.

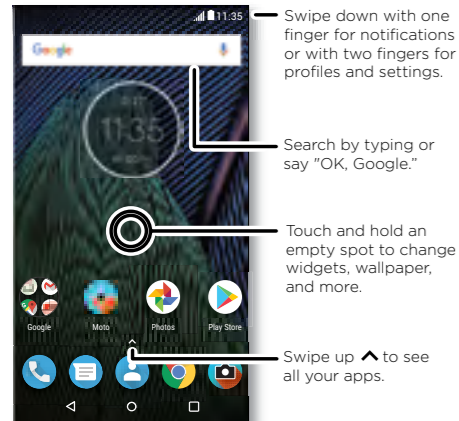
motorola.com



Home screen & settings

From the home screen, you can explore apps, check notifications, speak commands, and more.

- **Add a shortcut:** Swipe up , tap and hold an app, then drag it to your home screen.
- **Settings:** To change your Wi-Fi, display brightness, and more, swipe the status bar down with two fingers. To open more settings, tap .
- **Share your phone:** To add a guest user, swipe the status bar down with two fingers and tap .



Discover your Moto app

Explore special features designed to save you time and make your day easier.

Find it:  **Moto**


- **Moto Actions:** Use gestures as phone shortcuts.
- **Moto Display:** See your notifications at a glance.
- **Moto Key:** Securely log into your apps and websites with your fingerprint.

Note: Your phone may not have all features.

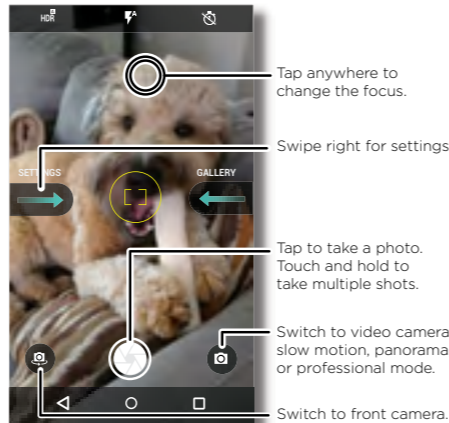


Photos

With two twists of the wrist and a tap on the screen, take crisp, clear photos.









- **Launch it:** Even when your phone is asleep, open your camera with two twists of your wrist.
- **See it:** Swipe left for your photo gallery.
- **Share it:** View a photo or video from your gallery, then tap .

Tip: Swipe right for camera settings and help information.



Help & more

Get answers, updates, and info:

- **Help is here:** Swipe up  >  **Device Help** to get walk-through tutorials, how-tos, or FAQs, right on your phone.
- **Everything Moto G⁵⁵** Get software, user guides, and more at www.motorola.com/mymoto
- **Get apps:** Swipe up  >  **Play Store** to buy and download apps.
- **News:** Here's how to find us:
 -  YouTube™ www.youtube.com/motorola
 -  Facebook™ www.facebook.com/motorola
 -  Twitter www.twitter.com/moto
 -  Google+™ www.google.com/+moto

Where is my legal, safety and regulatory information?

In order to provide you with better access to this important information, we've made the materials accessible from the phone's settings menu and on the web. Review these materials prior to using your device. To access the materials from a connected phone, go to **Settings > Legal information**, and select a topic. To access the materials on the web, visit www.motorola.com/device-legal.

Battery Safety

Before assembling, charging or using your mobile device for the first time, please read the important product safety and legal information provided with your product.

If your mobile device becomes unresponsive, try a reboot—press and hold the Power button until the screen goes dark and your device restarts.

For your safety, the battery in your mobile device should only be removed by a Motorola approved service center or independent qualified professional. Don't try to remove or replace the battery yourself—doing so may damage the battery and could cause burning and injury. Don't crush, bend, or expose your mobile device to heat or liquid. This may damage the battery and could cause burning and injury. Don't try to dry your mobile device using a microwave oven, conventional oven, or dryer.

Warning about High Volume Usage

To prevent possible hearing damage, do not listen at high volume levels for long periods.



Disposal & Recycling

Help do your part! Please don't dispose of mobile devices or electrical accessories (such as chargers, headsets, or batteries) with your household waste. Product packaging and product guides should only be disposed of in accordance with national collection and recycling requirements. For details on approved national recycling schemes and Motorola recycling activities, go to: www.motorola.com/recycling.



Usage

This phone supports apps and services that could use a lot of data, so make sure your data plan meets your needs. Contact your service provider for details. Certain apps and features may not be available in all countries.

Regulatory Information

To view the Regulatory ID (such as FCC ID) for this device, on the phone, go to **Settings > Legal information > Regulatory information**, or visit www.motorola.com/device-legal.

Warranty

This product is covered by Motorola's limited warranty. To review the warranty on your phone, go to **Settings > Legal information > Warranty**, or visit www.motorola.com/device-legal. You may also obtain a copy of the warranty by contacting Motorola at: Motorola Mobility LLC, Attention Customer Service--Warranty Request, 222 West Merchandise Mart Plaza, Suite 1800, Chicago, IL 60654.

Arbitration & Opt-out

Except where prohibited by law, any controversy or claim arising out of or relating to any Motorola product will be resolved by binding arbitration, instead of in court, unless you opt-out. To opt-out, send a written rejection notice within 30 days of purchase that includes your name, address, phone number, device, and device serial number, and tells Motorola that you are rejecting this Arbitration provision to: Motorola Mobility LLC, 222 West Merchandise Mart Plaza, Suite 1800, Attn: Arbitration Provision Opt-Out, Chicago, IL 60654 or arbitrat@motorola.com. For more information on this arbitration provision, on your phone, go to **Settings > Legal information > Arbitration and opt-out**, or visit www.motorola.com/device-legal.

Legal Disclaimers

Certain features, services and applications are network dependent and might not be available in all areas; additional terms, conditions and/or charges might apply. Contact your service provider for details. All features, functionality, and other product specifications, as well as the information contained in this guide, are based upon the latest available information and believed to be accurate at the time of printing. Motorola reserves the right to correct, change or modify any information or specifications without notice or obligation.

Copyright & Trademarks

MOTOROLA, the stylized M logo, MOTO, and the MOTO family of marks are trademarks or registered trademarks of Motorola Trademark Holdings, LLC. LENOVO is a trademark of Lenovo. Google, Android, Google Play and other marks are trademarks of Google Inc. microSD Logo is a trademark of SD-3C, LLC. All other product or service names are the property of their respective owners.

© 2017 Motorola Mobility LLC. All rights reserved.

Product ID: **Moto G⁵⁵** (Model XT1790, XT1791, XT1793, XT1794, XT1795,

XT1797)

Manual Number: XXXXXXXXXX

Motorola Mobility LLC
222 W. Merchandise Mart Plaza
Chicago, IL 60654
www.motorola.com