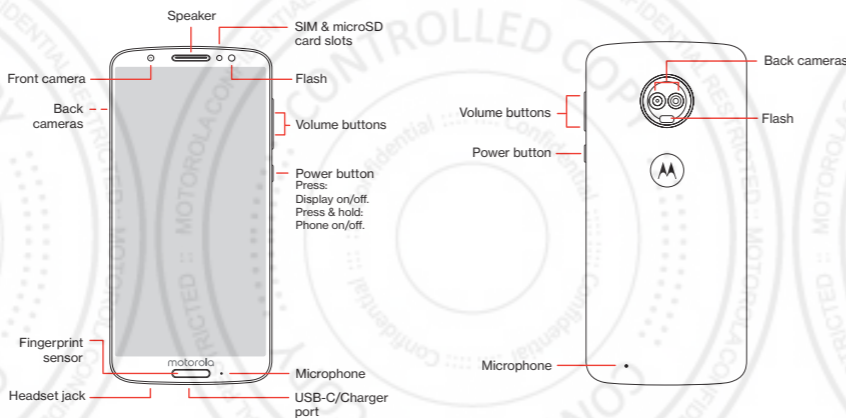


Meet your phone.

moto g⁶

Para la versión en español, visite verizonwireless.com/Support

About your phone

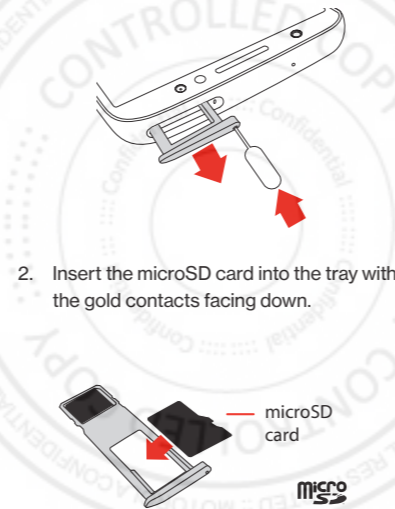


NOTE: Devices and software are constantly evolving—the screen images and icons you see here are for reference only.

Setting up your phone

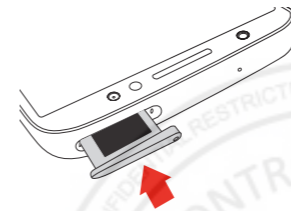
Your phone already has a SIM card installed.

- Optional:** Insert the microSD card
1. With the phone facing up, insert the tool that comes with your phone into the small hole on the card tray and pop out the tray.



NOTE: The microSD card is sold separately.

3. Carefully insert the tray back into the phone and make sure it closes securely.

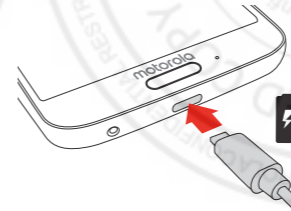


Caution: Handle the tray with care to avoid twisting and bending.

Charge your phone

Before turning on your phone, charge it fully.

Insert the small end of the USB-C cable into the charger port. Insert the other end into the power adapter, and plug the power adapter into an electrical outlet.



WARNING: Only use approved chargers with your device. Incompatible chargers or tampering with the charger port could damage your device and void the warranty.


Using your phone

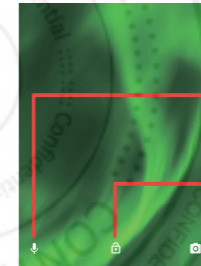
Turning your phone on/off

To turn your phone on, press and hold the **Power/Lock** button on the side of your phone until the screen turns on.

Press and hold the **Power/Lock** button again to turn it off.

Locking/unlocking the screen

To turn on your screen, press the **Power/Lock** button. Then drag the lock icon  up to unlock it.



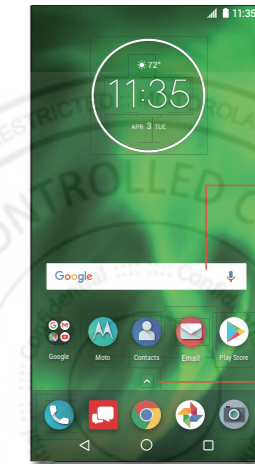
Touch and hold, then swipe right for voice assist.

Drag up to unlock your screen.

Touch and hold, then swipe left to open the camera.


To turn off your screen and prevent accidental key presses, press the **Power/Lock** button. Your phone will also lock automatically if you don't use it for awhile.

Home screen



Swipe down with one finger for notifications or with two fingers for settings.

Search by typing or say "OK, Google."

Swipe up  to see all your apps.

Learning more



The Help app gives you tips, videos and other information on how to use your phone, including:



Making calls



Voicemail



Sending texts



Getting apps



Taking photos



Accessibility settings



From your computer, visit: verizonwireless.com/Support.



Download a User Guide from verizonwireless.com/Support, or call **800.734.5870** to order a copy.

Managing your account



My Verizon Mobile app

Manage your account, track your usage, edit account information, pay your bill and more.



International travel

For features and rates when outside the US, visit verizonwireless.com/International.



Customer service

Call **800.922.0204**
Twitter [@VZWSupport](https://twitter.com/VZWSupport)

Additional information

Your wireless device and third-party services

Verizon Wireless is the mobile carrier associated with this wireless device, but many services and features offered through this device are provided by or in conjunction with third parties. Verizon Wireless is not responsible for your use of this device or any non-Verizon Wireless applications, services and products, including any personal information you choose to use, submit or share with others. Specific third-party terms and conditions, terms of use and privacy policies apply. Please review carefully all applicable terms, conditions and policies prior to using this wireless device and any associated application, product or service.

Hearing aid compatibility information

This phone has been tested and rated for use with hearing aids for some of the wireless technologies that it uses. However, there may be some newer technologies that have not been tested yet for use with hearing aids. It is important to try the different features of this phone thoroughly and in different locations, using your hearing aid or cochlear implant, to determine if you hear any interfering noise. Ask your service provider or the manufacturer of this phone for information on hearing aid compatibility. If you have questions about return or exchange policies, ask your service provider or phone retailer.

FCC and IC Compliance

This device complies with part 15 of the FCC rules. Operation is subject to the following two conditions: (1) this device may not cause harmful interference, and (2) this device must accept any interference received, including interference that may cause undesired operation. This device complies with Industry Canada license-exempt RSS standard(s). Operation is subject to the following two conditions: (1) this device may not cause interference, and (2) this device must accept any interference received, including interference that may cause undesired operation.

Battery safety

Before assembling, charging or using your mobile device for the first time, please read the important product safety and legal information provided with your product.

If your mobile device becomes unresponsive, try a reboot – press and hold the **Power** button until the screen goes dark and your device restarts.

For your safety, the battery in your mobile device should only be removed by a Motorola approved service center or independent qualified professional. Don't try to remove or replace the battery yourself – doing so may damage the battery and could cause burning and injury. Don't crush, bend, or expose your mobile device to heat or liquid. This may damage the battery and could cause burning and injury. Don't try to dry your mobile device using a microwave oven, conventional oven, or dryer.

Warning about high volume usage

To prevent possible hearing damage, do not listen at high volume levels for long periods.



Disposal & recycling

Help do your part! Please don't dispose of mobile devices or electrical accessories (such as chargers, headsets, or batteries) with your household waste. Product packaging and product guides should only be disposed of in accordance with national collection and recycling requirements. For details on approved national recycling schemes and Motorola recycling activities, go to: Motorola.com/Recycling.



Usage

This phone supports apps and services that could use a lot of data, so make sure your data plan meets your needs. Contact your service provider for details. Certain apps and features may not be available in all countries.

Regulatory information

To view the Regulatory ID (such as FCC ID) for this device, on the phone, go to **Settings > System > Regulatory information**, or visit: Motorola.com/Device-Legal.

Warranty

This product is covered by Motorola's limited warranty. To review the warranty on your phone, go to **Settings > System > Legal information > Warranty**, or visit: Motorola.com/Device-Legal. You may also obtain a copy of the warranty by contacting Motorola at: Motorola Mobility LLC, Attention Customer Service-Warranty Request, 222 West Merchandise Mart Plaza, Suite 1800, Chicago, IL 60654.

Arbitration & opt-out

Any controversy or claim arising out of or relating to any Motorola product will be resolved by binding arbitration, instead of in court, unless you opt-out. To opt-out, send a written rejection notice within 30 days of purchase that includes your name, address, phone number, device, and device serial number, and tells Motorola that you are rejecting this Arbitration provision to: Motorola Mobility LLC, 222 West Merchandise Mart Plaza, Suite 1800, Attn: Arbitration Provision Opt-Out, Chicago, IL 60654 or arbitrat@motorola.com. For more information on this arbitration provision, on your phone, go to **Settings > System > Legal information > Arbitration and opt-out**, or visit: Motorola.com/Device-Legal.

Copyright & trademarks

MOTOROLA, the stylized M logo, MOTO, and the MOTO family of marks are trademarks or registered trademarks of Motorola Trademark Holdings, LLC. LENOVO is a trademark of Lenovo. Google, Android, Google Play and other marks are trademarks of Google Inc. microSD Logo is a trademark of SD-3C, LLC. Manufactured under license from Dolby Laboratories. Dolby, Dolby Audio, and the double-D symbol are trademarks of Dolby Laboratories. All other product or service names are the property of their respective owners.

© 2018 Motorola Mobility LLC. All rights reserved.

Product ID: **moto g⁵** (Model XT1925-12)
Manual Number: HQ60113824000-A

© 2018 Verizon Wireless. All Rights Reserved.



SAR

This product meets the applicable national or international RF exposure guidance (SAR guideline) when used normally against your head or, when worn or carried, at a distance of 5 mm from the body. The SAR guideline includes a considerable safety margin designed to assure the safety of all persons, regardless of age and health.

To view the SAR values for your phone, visit <https://Motorola.com/SAR>. To view additional SAR information on your phone, swipe up . Then tap **Settings > System > Legal information > RF information**. To view the information on the web, visit Motorola.com/RFHealth.

HQ60113824000-A



Printed in China

