

Welcome

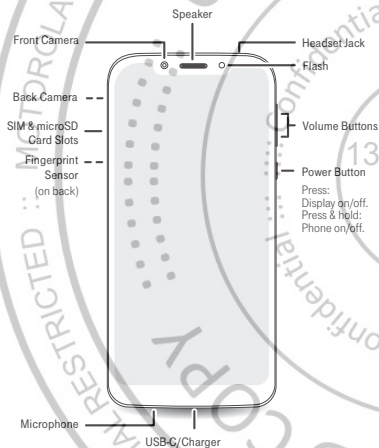
Start Guide



REVVL

At a Glance

Let's get started. We'll guide you through startup and tell you where to find more information about your phone and its great features.



Put in the cards

Caution: Make sure you use the correct size SIM card and don't cut the SIM card.



Nano SIM

Insert the nano SIM and memory cards.

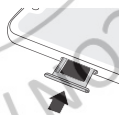
Insert the SIM tool into the tray hole to pop out the tray.



Insert the SIM card with the gold contacts down. Insert an optional microSD card (sold separately).



Push the tray back into your phone.



Caution: Handle the tray with care to avoid damage.



SAR

To view the SAR values for your phone, visit <https://motorola.com/sar>. This product meets the applicable national or international RF exposure guidance (SAR guideline) when used normally against your head or, when worn or carried, at a distance of 5 mm from the body. The SAR guideline includes a considerable safety margin designed to assure the safety of all persons, regardless of age and health.

To view additional SAR information on your phone, swipe up > **Settings** > **System** > **Legal information** > **RF information**. To view the information on the web, visit www.motorola.com/rfhealth.

motorola.com

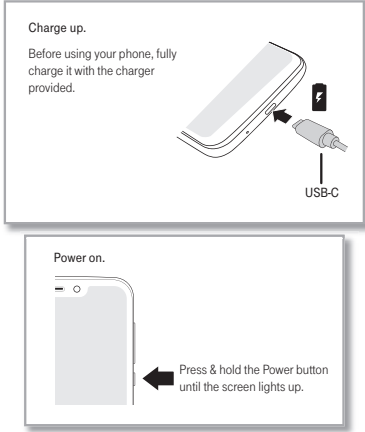


BC

Finish up

Connect your charger to charge your phone fully, then turn on the power. Follow the screen prompts to get started.

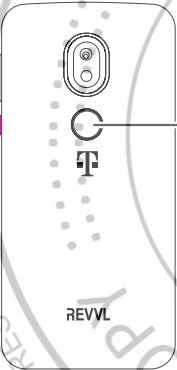
Note: Your phone comes with a rapid charger. Use of other chargers is not recommended.



Security & convenience

Lock, unlock, and more with ease.

- **Fingerprint and screen lock:** Swipe up > **Settings** > **Security & location**.
- **Face unlock:** Swipe up > **Settings** > **Security & location** > **Face unlock**.



Useful apps

When you're up and running, try these apps to see what you can do with your new phone.

Find it: Swipe up from the home screen to see all your apps.

Camera:	Your camera takes crisp, clear photos and videos, but that's not all. See features, like Google Lens™, group selfie, and spot color.
Play Music:	Stream it, buy it, save it, or play it. Listen and create playlists anytime.
Google Chrome™:	Access the internet to shop, search, learn or just browse.
Gmail:	Connect to all your email accounts and manage them in one easy place.
Google Duo:	Make and receive video or audio calls—over Wi-Fi when it's available.

Note: Software updates happen frequently, so your phone may not have all the listed apps or features.

Help & more

Get answers, updates, and info:

- **Help is here:** Swipe up > **Settings** > **Help** to learn how to use your phone and get support.
- **Get more:** Review your phone's User Manual and troubleshooting FAQs. View the latest troubleshooting solutions in the Support Forums or ask a question of your own at www.t-mobile.com/support.
- **Get apps:** Tap **Play Store** to buy and download apps.
- **Join the conversation:** Find us on YouTube™, Facebook™, and Twitter.

Where is my legal, safety, and regulatory information?

In order to provide you with better access to this important information, we've made the materials accessible from the phone's Settings menu and on the web. Review these materials prior to using your phone. To access the materials from a connected phone, Swipe up > **Settings** > **System** > **Legal information**, and select a topic.

Copyright & Trademarks

Google, Android, Google Play and other marks are trademarks of Google LLC. microSD Logo is a trademark of SD-3C, LLC. T-Mobile and the magenta color are registered trademarks of Deutsche Telekom AG. The Visual Voicemail and Name ID icons are trademarks of T-Mobile USA, Inc. All other product or service names are the property of their respective owners.
© 2019 Motorola Mobility LLC. All rights reserved.

Product ID: Model XT1952-T
Manual Number: TBD-A