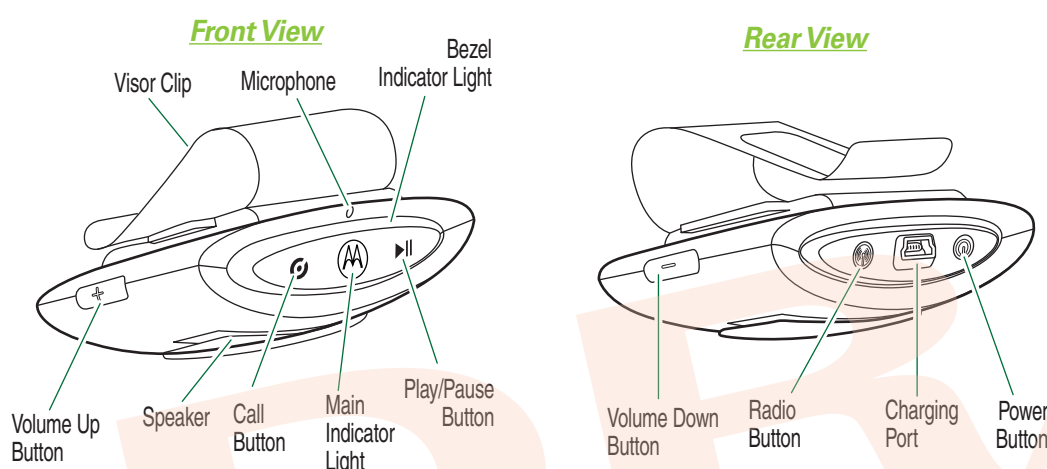




## BEFORE YOU BEGIN

Before using this product, read the Important Safety and Legal Information pamphlet and follow its instructions.

Take a moment before you get started to familiarize yourself with your new MOTOROKR™ T3 Bluetooth® Wireless Music and Handsfree Car Speaker.



**START HERE >**

## 1 SET UP Your MOTOROKR T3

To get started, your MOTOROKR T3 must be set up with initial configuration settings.

- Press and hold Power button to enter setup mode. You hear a voice prompt to select appropriate language for remaining voice prompts.
- Select **language** for voice prompts as follows:
  - Press Volume buttons to change current selection.
  - Press Play/Pause button to make selection. You hear a confirmation tone.

- Select whether to **enable/disable the auto caller ID feature**:
  - Press Volume buttons to select enable or disable.
  - Press Play/Pause button to confirm selection. You hear a confirmation tone.
- Press Play/Pause button again to complete setup. You hear a confirmation tone.

When setup is complete, you hear the voice prompt "Setup is complete. Device is ready."

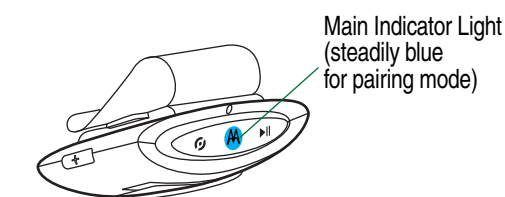
After a few moments, your MOTOROKR T3 enters Bluetooth pairing mode.

## 2 PAIR Your MOTOROKR T3 and Bluetooth Device

Before you can use your MOTOROKR T3, you must pair (link) it with your phone and/or music device.

### Step A - ENSURE MOTOROKR T3 IS IN PAIRING MODE

When setup is complete (step 1), your MOTOROKR T3 is automatically placed in Bluetooth pairing mode. The main indicator light will be steadily lit in blue to indicate handsfree speaker is in pairing mode.



If the handsfree speaker is not pairing mode, see **TROUBLESHOOTING** for help.

### Step B - TURN ON BLUETOOTH FEATURE ON YOUR DEVICE

To use your MOTOROKR T3, you must turn on the Bluetooth feature in your phone or music device.

For most Motorola phones:

- Press **[Menu] > Settings > Connection > Bluetooth Link > Setup.**
- Scroll to **Power.**
- Select **Change.**
- Scroll to **On.**

- Press **Select** to turn on the Bluetooth feature. The Bluetooth feature remains on until you turn the feature off.

*Note: These steps are for most Motorola phones. For other phones, see your phone's user's guide.*

### Step C - SET YOUR DEVICE TO LOOK FOR YOUR MOTOROKR T3

While the MOTOROKR T3 is in pairing mode, use your phone or music device to perform a device discovery. Refer to your device's manual for detailed instructions on accessing Bluetooth and putting it in device discovery mode.

For most Motorola phones:

- Press **[Menu] > Settings > Connection > Bluetooth Link > Handsfree > Look for Devices.** The phone lists Bluetooth devices it finds.
- Select **Motorola T3.**
- Select **OK** or **Yes** to pair your MOTOROKR T3 with your phone.
- Enter the passkey: **0000**
- Select **OK.**

*Note: These steps are for most Motorola phones. For other phones, see your phone's user's guide.*

When your MOTOROKR T3 successfully pairs and connects with your phone or music device, the main indicator light flashes purple and blue.

## 3 TEST AND USE

Your MOTOROKR T3 and phone or music device are now paired and connected. Do the following to verify proper operation:

- To verify handsfree calling operation,** dial the number you want to call on the phone and press **SEND** key on your phone. If your phone and MOTOROKR T3 are successfully paired, you will hear ringing on your T3.
- To verify streaming audio listening operation,** play music on your streaming music device. If your music source and MOTOROKR T3 are successfully paired and connected for streaming music, you hear music on your T3.

## YOU'RE FINISHED!

After you have successfully set up your MOTOROKR T3, you don't need to repeat these steps.

For daily use, ensure that your T3 is turned ON and your phone and/or music device's Bluetooth feature is ON.

To modify T3 configuration settings, you can reenter setup mode by pressing and holding the Power and Call buttons when powering up.

To use the T3 with your FM car radio, see "Using With Your FM Car Radio" on the reverse side.

## CHECKING BATTERY LEVEL

To check your T3's battery charge level while turned on and not on a call, you can by pressing and holding both Volume buttons until you hear a beep (about 5 seconds). The main indicator light displays charge status for a few seconds (see "Indicator Light" on reverse side for details).

To charge your T3, see "Charging Battery" on the reverse side for details.

## USING YOUR MOTOROKR T3

See **Features and Functions Guide** on the reverse side for information on using your T3



## TROUBLESHOOTING

**My MOTOROKR T3 will not enter pairing mode.** Make sure that any devices previously paired with the T3 are turned off. If the main indicator light is pulsing in blue, first turn off the other device, then turn your T3 off and on. The main indicator light becomes steadily lit in blue indicating the T3 is now in pairing mode.

**My phone/music device doesn't find my MOTOROKR T3.**

Make sure the indicator light on your T3 is on (lit in blue) and steady when your phone/music device is searching for devices (see step 2a).

**My MOTOROKR T3 worked before but now it's not working.**

Make sure your phone/music device is on and the Bluetooth feature is turned on in your device (see step 2b). If the Bluetooth feature was turned off or was turned on only temporarily, you may need to restart the Bluetooth feature (see step 2b) and pair your device and T3 again (see step 2c).

### Support

If you need more help, contact us at **1-877-MOTOBLU** or visit us at [www.hellomoto.com/Bluetoothsupport](http://www.hellomoto.com/Bluetoothsupport)

Motorola, Inc.  
Consumer Advocacy Office  
1307 East Algonquin Road  
Schaumburg, IL 60196

[www.hellomoto.com](http://www.hellomoto.com)  
1-877-MOTOBLU  
1-888-390-6456 (TTY/TDD United States for hearing impaired)

Guide Number: 6809503A46-O

Bluetooth ID: xxxxxx

MOTOROLA and the Stylized M Logo are registered in the US Patent & Trademark Office. The use of wireless devices and their accessories may be prohibited or restricted in certain areas. Always obey the laws and regulations on the use of these products. The Bluetooth trademarks are owned by their proprietor and used by Motorola, Inc. under license. All other product or service names are the property of their respective owners.

© Motorola, Inc. 2007.

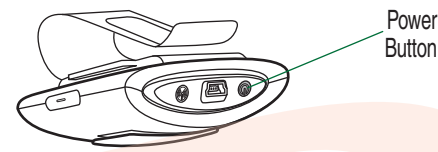
# Features and Functions Guide

**IMPORTANT:** Be sure to first follow the **Quick Start Guide** on the reverse side of this guide to complete initial setup of your MOTOROKR T3.

## TURNING MOTOROKR T3 ON AND OFF

**To turn your T3 on,** press and hold the Power button until you hear the voice prompt "Device is ready", and the main indicator light flash blue three times.

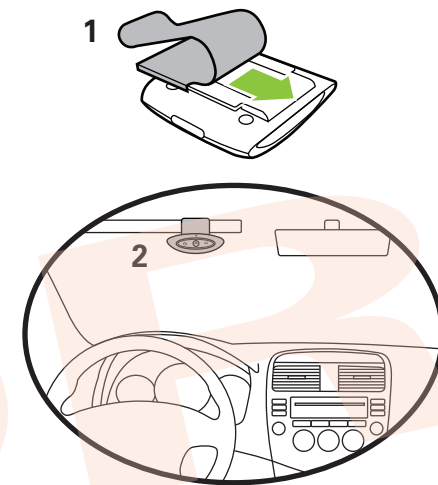
**To turn your T3 off,** press and hold the Power button until you hear the voice prompt "Powering off", and the main indicator light flash blue three times.



When idle (not connected to a Bluetooth device) or not active for 30 minutes, the T3 powers down automatically.

## INSTALLING IN CAR

To install the T3 in your car, first slide metal visor clip onto T3, then secure T3 to the sun visor in your car as shown below.



## USING WITH YOUR FM CAR RADIO

When your MOTOROKR T3 is connected and operating with your phone and/or music device, you can route call and music audio to your car's FM radio.

To hear calls and streaming music over your FM car radio:

- 1 Press Radio button on rear of your MOTOROKR T3. After a few moments, the bezel indicator light is lit and voice prompt states the currently set frequency (default is "88.1MHz").
- 2 Turn on your car's FM radio and tune to broadcast frequency. Call and streaming music audio is broadcast on your FM.

To turn off FM transmitter, press and hold Radio button until the bezel indicator turns off.

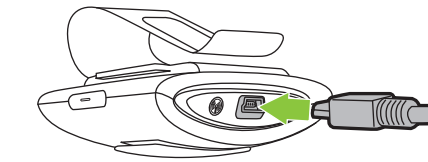
## SETTING FM CAR RADIO FREQUENCY

You can set the frequency used by the T3 to broadcast calls and streaming music to your FM car radio.

To do this, tap the Radio button. The T3 searches for another clear frequency. When found, the voice prompts states the new frequency. (For example, if the new frequency is 96.1MHz, the voice prompt states "96.1MHz.")

[How do you save/confirm the new frequency?]

## CHARGING BATTERY



- 1 Plug the Motorola charger into the charging port on the rear of the T3.

The main indicator light turns red or yellow when the battery is charging. It may take up to 1 minute for the indicator light to turn on. When the T3's battery is fully charged (about [x] hours), the indicator light turns green.

- 2 Disconnect the charger.

*Note: T3 is not functional while charging.*

## LISTENING TO MUSIC

Function	Action
Play/Pause music	Tap Play/Pause button
Skip to next track	Tap Volume Up button
Skip to previous track	Tap Volume Down button
Fast-forward track	Press and hold Volume Up button
Rewind track	Press and hold Volume Down button
Stop music player	Press and hold the Play/Pause button until you hear a beep

## MAKING CALLS

Function	Action
Make a voice dial call	Tap the Call button and speak the name after the tone
End a call	Tap the Call button
Answer a call	Tap the Call button
Ignore a call	Tap either Volume button
Reject a call	Press and hold either Volume button until incoming call stops ringing
Redial last call	Press and hold the Call button for at least 2 seconds until you hear a beep

*Note: Some features are phone/network dependent.*

*Note: Your T3 supports both Handsfree and Headset Profiles. Accessing call functions depends upon which profile your phone supports. See your phone's user's guide for more information.*

## MAKING CALLS *CONTINUED*

Function	Action
Mute or unmute a call	Tap Play/Pause button
Answer a second incoming call	Tap the Call button
End an active call and resume a call on hold	Tap the Call button
Ignore a second incoming call	Tap either Volume button

*Note: Some features are phone/network dependent.*

## MAIN INDICATOR LIGHT

With the Charger Plugged In

Indicator	Status
Red	Charging (battery level less than 80% charge)
Yellow	Charging (battery level more than 80% charge)
Blue	Charging complete

When Checking Battery Level

Indicator	Status
Red	Battery at less than 10% charge
Yellow	Battery at between 10% and 80% charge
Green	Battery at more than 80% charge

## MAIN INDICATOR LIGHT

With No Charger Plugged In

Indicator	Status
Off	Power off
Three blue flashes	Powering on/off
Steady blue	Pairing mode
Rapid blue/purple flashes	Pairing successful
Quick blue flash	Incoming/outgoing call
Slow blue pulse	Connected (on a call)/ Standby (not on a call)
Slow red pulse	Idle (not connected to Bluetooth device)
Slow purple pulse	Connected call muted
Quick red flash	Low battery
Slow green pulse	Music streaming

*Note: After [xx] minutes on a call or of inactivity, the light stops flashing to conserve power, but the headset remains on.*

## BEZEL INDICATOR LIGHT

With No Charger Plugged In

Indicator	Status
Off	FM transmitter off
On	FM transmitter on

*Note: After [xx] minutes on a call or of inactivity, the light stops flashing to conserve power, but the headset remains on.*

## AUDIO TONES

Audio Tone	Status
Ascending tone	Powering on
Two descending tones	Powering off
Four ascending tones	Charger connected
Four descending tones	Charger disconnected
Three ascending tones	Connected call
Three descending tones	Disconnected call
Two short tones when pressing Volume button	Volume at minimum or maximum

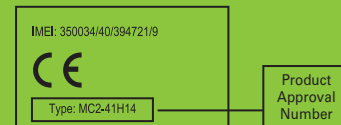
## AUDIO TONES *(CONTINUED)*

Audio Tone	Status
Series of ascending tones	Volume increasing
Series of descending tones	Volume decreasing
Two rapid ascending tones	Mute enabled
Two rapid descending tones	Mute disabled
Two short tones when pressing Volume Up button when music playing	Track forward
Two short tones when pressing Volume Down button when music playing	Track backward
High/low tones repeated every 60 sec.	Low battery
No audio indications; deteriorating quality	Out of range

### European Union Directives Conformance Statement

Hereby, Motorola declares that this product is in compliance with:

- The essential requirements and other relevant provisions of Directive 1999/5/EC.
- All other relevant EU Directives.



The above gives an example of a typical Product Approval Number.

You can view your product's Declaration of Conformity (DoC) to Directive 1999/5/EC (to R&TTE Directive) at [www.motorola.com/rte](http://www.motorola.com/rte). To find your DoC, enter the product Approval Number from your product's label in the "Search" bar on the web site.

## FCC Caution

1. The device complies with Part 15 of the FCC rules. Operation is subject to the following two conditions:
  - (1) This device may not cause harmful interference.
  - (2) This device must accept any interference received, including interference that may cause undesired operation.
2. FCC RF Radiation Exposure Statement: The equipment complies with FCC RF radiation exposure limits set forth for an uncontrolled environment. This equipment should be installed and operated with a minimum distance of 20 centimeters between the radiator and your body.
3. This Transmitter must not be co-located or operating in conjunction with any other antenna or transmitter.
4. Changes or modifications to this unit not expressly approved by the party responsible for compliance could void the user authority to operate the equipment.

## Europe - EU Declaration of Conformity 0984

This device complies with the essential requirements of the R&TTE Directive 1999/5/EC with essential test suites as per standards:

### **EN 300 328 V1.7.1:**

Electromagnetic compatibility and Radio Spectrum Matters (ERM); Wideband Transmission systems; Data transmission equipment operating in the 2,4 GHz ISM band and using spread spectrum modulation techniques

### **EN 301 489-17 V1.2.1:**

Electromagnetic compatibility and Radio Spectrum Matters (ERM); ElectroMagnetic Compatibility (EMC) standard for radio equipment and services; Part 17: Specific conditions for 2,4 GHz wideband transmission systems and 5 GHz high performance RLAN equipment

---

### **ETSI EN 301 357-2 V1.3.1:**

Electromagnetic compatibility and Radio spectrum matters (ERM); Cordless audio devices in the range 25MHz to 2000 MHz; Consumer radio microphones and in-ear monitoring systems operating in the CEPT harmonized band 863MHz to 865MHz; Part 2: Harmonized EN covering essential requirements under article 3.2 of the R&TTE Directive

### **EN 301 489-9 V1.3.1:**

Electromagnetic compatibility and Radio spectrum Matters (ERM); ElectroMagnetic Compatibility (EMC) standard for radio equipment and services; Part 9: Specific conditions for wireless microphones, similar Radio Frequency (RF) audio link equipment, cordless audio and in-ear monitoring devices

### **EN 60950-1:**

Safety of information technology equipment, including electrical business equipment

Hereby, J-LINK CO., LTD, declares that this BTF-01 is in compliance with the essential requirements and other relevant provisions of Directive 1999/5/EC.
J-LINK CO., LTD vakuuttaa täten että BTF-01 tyyppinen laite on direktiivin 1999/5/EY oleellisten vaatimusten ja sitä koskevien direktiivin muiden ehtojen mukainen.
Hierbij verklaart J-LINK CO., LTD dat het toestel BTF-01 in overeenstemming is met de essentiële eisen en de andere relevante bepalingen van richtlijn 1999/5/EG

In addition to the requirements of Section 7.1.5 in RSS-Gen, the device's shall also contain the following or equivalent statement: “Privacy of communications may not be ensured when using this telephone”.

If privacy is provided as a standard feature, the privacy notice may be omitted provided that full justification accompanies the equipment certification application for evaluation by Industry Canada.