

Wireless Wheels User's Guide

DRAFT



NNTN6704A

Contents

Safety and General Information	ii
Electromagnetic Interference/Compatibility	ii
Industry Canada Notice to Users	iii
FCC Notice to Users	iii
Getting Started.....	1
Package Contents.....	2
Battery Requirements.....	2
Customer Service.....	3
Technical Support	3

Battery Installation	9
Joystick Controller	9
Vehicle	9
Motorola Wireless Remote Control Adapter Installation	11
Operating Your Vehicle.....	15
Using The Joystick Controller	15
Adjusting Steering Alignment	19
Patent and Trademark Information	20
Index	21

Safety and General Information

Product Name: *Wireless Wheels*

Kit Number **NASCAR: NNTN6401A**

Kit Number **Maserati: NNTN6402A**

IMPORTANT INFORMATION ON SAFE AND EFFICIENT OPERATION. READ THIS INFORMATION BEFORE USING YOUR DEVICE.

Users are not permitted to make changes or modify the device in any way. Changes or modifications not expressly approved by the party responsible for compliance could void the user's authority to operate the equipment. See 47 CFR Sec. 15.21.

This device complies with part 15 of the FCC Rules. Operation is subject to the following two conditions: (1) This device may not cause harmful interference, and (2) this device must accept any interference received, including interference that may cause undesired operation. See 47 CFR Sec. 15.19(3).

Electromagnetic Interference/Compatibility

Note: Nearly every electronic device is susceptible to electromagnetic interference (EMI) if inadequately shielded, designed, or otherwise configured for electromagnetic compatibility.

Facilities

To avoid electromagnetic interference and/or compatibility conflicts, turn off your device in any facility where posted notices instruct you to do so. Hospitals or health care facilities may be using equipment that is sensitive to external RF energy.

Aircraft

When instructed to do so, turn off your device when on board an aircraft. Any use of a device must be in accordance with applicable regulations per airline crew instructions.

Medical Devices

Hearing Aids

Some devices may interfere with some hearing aids. In the event of such interference, you may want to consult with your hearing aid manufacturer to discuss alternatives.

Other Medical Devices

If you use any other personal medical device, consult the manufacturer of your device to determine if it is adequately shielded from RF energy. Your physician may be able to assist you in obtaining this information.

Industry Canada Notice to Users

Operation is subject to the following two conditions: (1) This device may not cause interference and (2) This device must accept any interference, including interference that may cause undesired operation of the device Ref IC RSS 210 Sec. 5.11. The term "IC:" before the certification/registration number only signifies that registration was performed based on a Declaration of Conformity indicating that Industry Canada technical specifications were met. It does not imply that Industry Canada approved the equipment. See Ref IC Self-Marking 6(f) and RSP-100 Sec. 4.

FCC Notice to Users

This equipment has been tested and found to comply with the limits for a Class B digital device, pursuant to part 15 of the FCC Rules. These limits are designed to provide reasonable protection against harmful interference in a residential installation. This equipment generates, uses and

can radiate radio frequency energy and, if not installed and used in accordance with the instructions, may cause harmful interference to radio communications. However, there is no guarantee that interference will not occur in a particular installation.

If this equipment does cause harmful interference to radio or television reception, which can be determined by turning the equipment off and on, the user is encouraged to try to correct the interference by one or more of the following measures:

- Reorient or relocate the receiving antenna.
- Increase the separation between the equipment and the receiver.
- Connect the equipment to an outlet on a circuit different from that to which the receiver is connected.
- Consult the dealer or an experienced radio/TV technician for help.

Getting Started

Recommended:For ages 6 and up.

Getting Started

Package Contents

Your Wireless Wheels R/C car package contains the following:

- 1-9V battery
- 4-AA alkaline batteries(1.5V)
- Wireless Wheels remote control car
- Wireless Wheels joystick controller
- Motorola Wireless Remote Control Adapter

Battery Requirements

- Vehicle : 4 x AA alkaline(1.5V)
- Transmitter : 1 x 9V battery

Customer Service

For customer service, contact Nikko Customer Service toll-free at 1-800-736-4556.

Additional information can be found on the Nikko America web site at: <http://www.nikkoamerica.com>

Technical Support

For technical support, contact Nikko Technical Support toll-free at 1-800-736-4556. Before you call, make a note of the exact problems and error messages you encountered.

Additional information can be found on the Nikko America web site at: <http://www.nikkoamerica.com>

Battery Installation

Joystick Controller

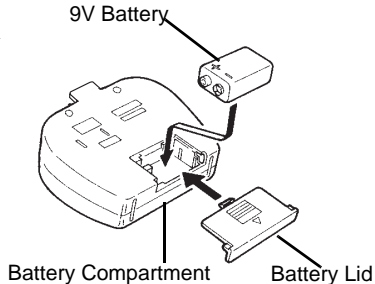
Install batteries making sure that the + and - poles of the batteries are positioned accurately.

- Make sure vehicle's on-off switch is turned OFF when installing batteries.

Note: Do not use Ni-Cd batteries.

To Open the Battery Compartment Lid

- 1 Press and slide off the battery compartment lid.



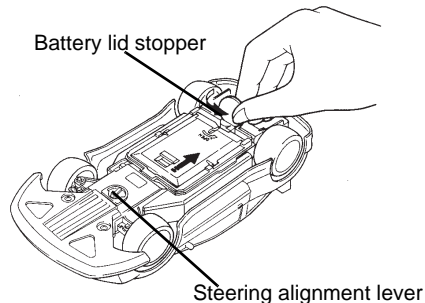
Vehicle

- Make sure vehicle's on-off switch is turned OFF when installing batteries.
- Avoid combined use of new dry batteries and old ones.

Note: Do not use Ni-Cd batteries.

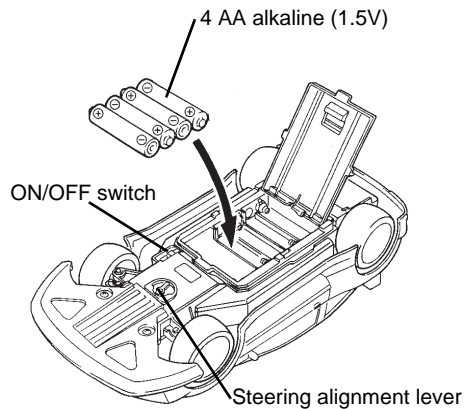
To Open the Battery Compartment Lid

- 1 Use coin to turn the battery lid stopper to the OPEN position.
- 2 Slide the battery compartment lid forward a little, applying pressure on to the latch.



Battery Installation

- 3 Then, the battery compartment lid can be pulled and open.

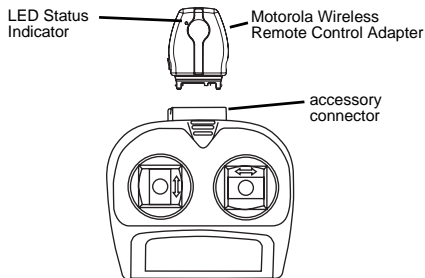


Motorola Wireless Remote Control Adapter Installation

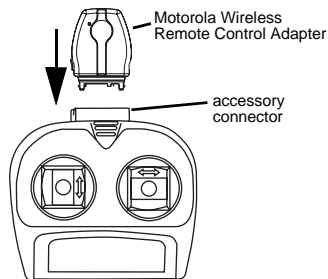
Attaching the Motorola Wireless Remote Control Adapter to your Joystick Controller

Your Wireless Wheels package contains a Motorola Wireless Remote Control Adapter.

- 1 Locate the accessory connector on your joystick controller.



- 2 Plug the end of the Motorola Wireless Remote Control Adapter into the accessory connector.



- 3 The joystick controller will automatically connect to an available car when one or more cars are turned on and not controlled by other users. The system will search for the last car that was controlled by the Motorola Wireless Remote Control Adapter. If the last car that was controlled is found, it will immediately connect to it. Otherwise, it will connect to the available car with the strongest radio signal.

Tip: To remove the Motorola Wireless Remote Control Adapter from the accessory connector: Press the buttons on the sides of the Adapter. Pull the Adapter straight out.

Wireless Remote Control Adapter Status Indicator

The wireless remote control adapter has a green light emitting diode (LED) to let you know what it is doing. The blinking pattern will let the user know when the car is ready to drive.

The status LED blink pattern will blink a pattern of short (0.1 second) on-off blinks and then turn off the LED for one second and then repeat the blink pattern again.

When you first connect the wireless remote control adapter, it will blink one time to indicate that it is powered by the joystick controller.

Next the status indicator will blink two times to indicate that it is trying to connect to a car.

The normal operation for driving a car is called the connected state would be a three blink pattern. It would be three 0.1 sec LED light flashes then no flashes for one second and then it would repeat the pattern.

The value below is the number of blinks in each pattern.

Value	State	Description
1 Blink	Standby	Power saving - Not controlling the RC car
2 Blinks	Discoverable or Discovery	RC car or wireless remote control adapter is looking for each other
3 Blinks	Connected	The wireless remote control adapter or joystick controller is controlling an RC car

Motorola Wireless Remote Control Adapter Installation

4 Blinks	Disconnected	The wireless remote control adapter or Joystick controller was controlling a RC car but has lost the signal.
5 Blinks	Scan	The RC car is looking for a clear channel to begin operation. This state is not used all that often and will rarely be noticed.

Operating Your Vehicle

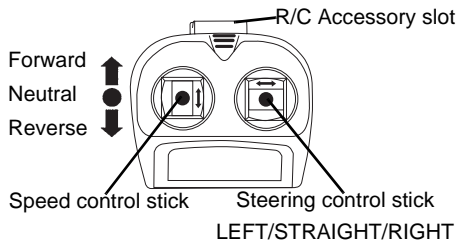
Using The Joystick Controller

- 1 Turn ON the vehicle.
- 2 Attach the Motorola Wireless Remote Control Adapter to the joystick controller. A blinking LED indicates that the Motorola Wireless Remote Control Adapter is working. See “Wireless Remote Control Adapter Status Indicator” on page 13.

Note: The Motorola Wireless Remote Control Adapter will connect to the last car driven, if present. Otherwise, it will connect to the car with the strongest signal at the time.

- 3 Operate the vehicle with joystick controller.
- 4 Turn OFF the vehicle after operating.
- 5 Detach the Motorola Wireless Remote Control Adapter from the joystick controller when not in use to conserve battery life.

Important: Please follow the above sequence of operation.



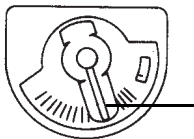
Powering the Joystick Controller On and Off

The transmitter is powered ON automatically when the Motorola Wireless Remote Control Adapter is attached. See “Attaching the Motorola Wireless Remote Control Adapter to your Joystick Controller” on page 12.

Adjusting Steering Alignment

Adjust the steering alignment lever on the underside of the vehicle when the vehicle doesn't run straight forward.

Adjusting Steering Alignment



To Adjust Steering Alignment

Patent and Trademark Information

MOTOROLA, the Stylized M Logo and all other trademarks indicated as such herein are trademarks of Motorola, Inc. © Reg. U.S. Pat. & Tm. Off. © 2005 Motorola, Inc. All rights reserved.

Microsoft and Microsoft Internet Explorer are registered trademarks of Microsoft Corporation.

T9 is a trademark owned by Tegic Communications.

T9® Text Input Patent and Trademark Information

This product is covered by U.S. Pat. 5,818,437, U.S. Pat. 5,953,541, U.S. Pat. 6,011,554 and other patents pending.

All other product names or services mentioned in this manual are the property of their respective trademark owners.

Software Copyright Notice

The Motorola products described in this manual may include copyrighted Motorola and third party software stored in semiconductor memories or other media. Laws in the United States and other countries preserve for Motorola and third party software providers certain exclusive rights for copyrighted software, such as the exclusive rights to distribute or reproduce the copyrighted software.

Accordingly, any copyrighted software contained in

the Motorola products may not be modified, reverse-engineered, distributed, or reproduced in any manner to the extent allowed by law. Furthermore, the purchase of the Motorola products shall not be deemed to grant either directly or by implication, estoppel, or otherwise, any license under the copyrights, patents, or patent applications of Motorola or any third party software provider, except for the normal, non-exclusive, royalty-free license to use that arises by operation of law in the sale of a product.