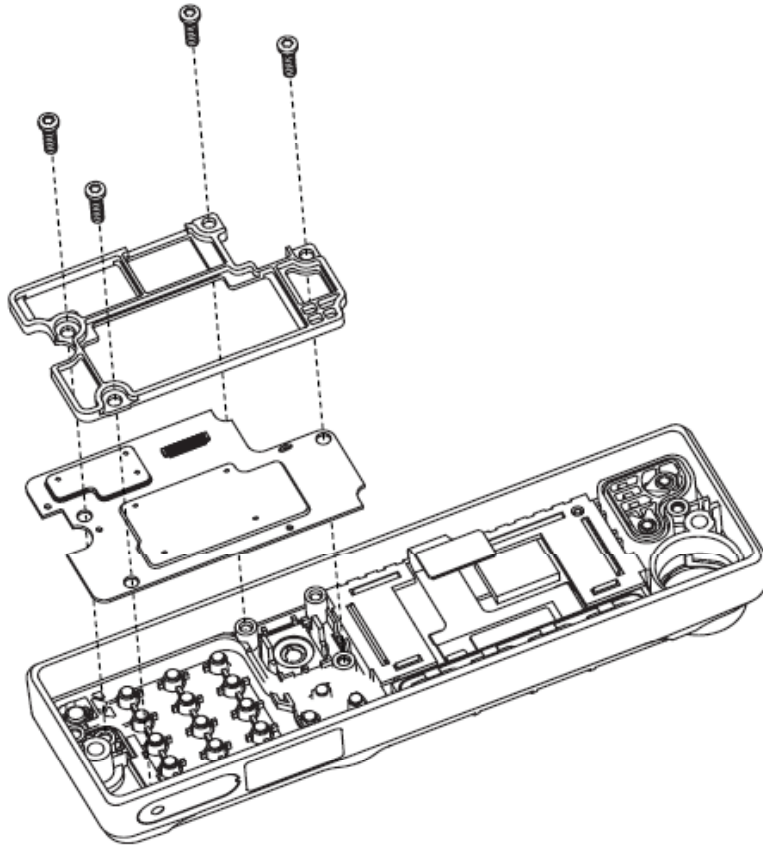


# O7 BT Board Assembly



1. Place the Bluetooth PCB and Bluetooth PCB retainer in the front housing, seating the PCB surface on the screw bosses. Ensure that the aligning bosses protrude through the PCB and retainer.

2. Using a Torx T10 screwdriver, fasten the four Bluetooth PCB retention screws following the sequence . (torque to 6 in. lbs.).