

Quickstart



Welcome to AT&T

Please use this quickstart to get a brief overview of the major features and services available with your MOTOROLA **FLIPOUT** with MOTOBLUR.

You can also use our interactive web tutorial available at

att.com/Tutorials

for the most complete and up to date information available for setting up and using your new smartphone and all the services available. The online tutorials include step-by-step instructions and screen shots to assist your learning as well as providing an easy search function.

Your Phone



Tip: Your phone can automatically switch to vibrate mode whenever you place it face-down. To change this, touch Menu [⌘] > **Settings** > **Sound & display** > **Smart Profile: Face Down to Vibrate**.

Note: Your phone might look a little different.

Device Setup



Caution: Before assembling, charging or using your phone for the first time, please read the *Safety, Regulatory, & Legal Information* provided with your phone.

When you first turn on your phone, you need to create or log into **your MOTOBLUR account**. MOTOBLUR syncs your contacts, posts, feeds, messages, emails, and photos from your other accounts. Registration is secure and should only take a few minutes:

- Press and hold Power [⏻] on the side of your phone to turn it on.
- Select a language.
- Log in or register: Enter your name, your current email address (where MOTOBLUR can send account information), and a new MOTOBLUR account password.
- To add an account to MOTOBLUR, touch the account type, then enter the account's user name (or email) and password.
- When you're done, touch **Done adding accounts**.

Tip: To see the accounts you added, touch Menu [⌘] > **Settings** > **Accounts**.

You can log into your MOTOBLUR account from a computer to upload contacts, reset your password, get help, or even locate your phone: www.motorola.com/mymotoblur

My MOTOBLUR Account Login

User ID (my valid email address)

Password Hint

Ringtones & Settings

You can customize sound and display settings:

- To set your ringtone and notifications, touch Menu [⌘] > **Settings** > **Sound & display**. To use a song as a ringtone, touch [🎵] > **Music** > **My Music**, touch and hold the song name, then touch **Use as phone ringtone**.
- To switch to silent mode when you have **Screen lock** turned on, you can slide the silence switch on the unlock screen.

You can also try Menu [⌘] > **Settings** > **Sound & display** > **Double-Tap to Silence** or **Smart Profile: Face Down to Vibrate**.

- To set notifications for different message types, touch [📧] > **Messaging** > Menu [⌘] > **Messaging Settings** > **Text Messaging**, **Email**, or **Social Messaging**.
- To set your display brightness, orientation, wallpaper, and more, touch Menu [⌘] > **Settings** > **Sound & display**.

More Information

On your phone—Touch [📎] > **Help Center**.

On the web—You can also get support online:

- Interactive web tutorials are available at att.com/Tutorials. Select Manufacturer: **Motorola** and Model: **FLIPOUT** from the drop-down menus.
- For help with MOTOBLUR go to www.motorola.com/mymotoblur
- For detailed support information including device specifications, the user manual, troubleshooting, user forums and knowledgebase articles, go to att.com/DeviceSupport
- For information about your wireless account, service plan or network, go to att.com/Wireless

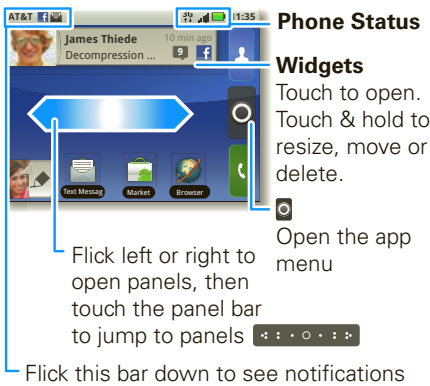
On any phone—Call AT&T Customer Care at 1-800-331-0500 or dial 611 from any AT&T mobile phone for assistance with your service or device.

Find Accessories

You can find accessories for your phone at att.com/WirelessAccessories or visit your local AT&T store.

Home Screen

The home screen gives you all your latest information in one place. It's what you see when you turn on the phone or touch Home [🏠] from a menu.



In your home screen:

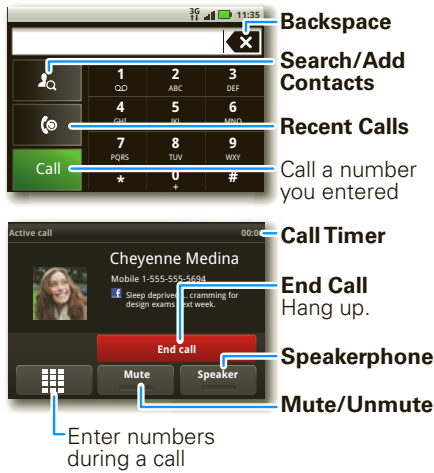
- To **open** something, touch it. Touch Home [🏠] to return to the home screen.
- To **change** widget options (if available), open the widget and touch Menu [⌘]. You can choose a calendar in calendar widgets.
- To **resize** a **Motorola widget**, touch and hold a corner until you feel a vibration, then drag.
- To **add** something to the screen, touch and hold an empty spot until the menu opens—you can add shortcuts, widgets, or folders, or change wallpaper.
- To **move** or **delete** something, touch and hold it until you feel a vibration, then drag it to another place, another panel, or to the trash can.



Calls

You need to open your phone to place a call unless you connect a headset or car kit.

Find it: [📞] **Dialer**

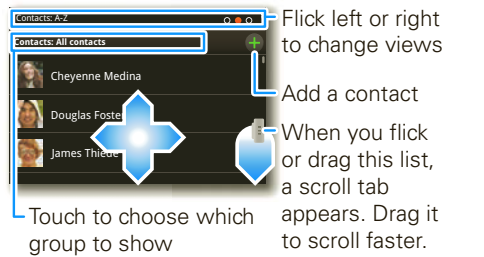


Tip: You can touch Home [🏠] or Back [⏮] to hide the active call display. To reopen it, touch [📞] **Dialer**.

When you have a new voicemail, 📞 shows at the top of your screen. To hear the voicemail, flick down the notification bar and touch the 📞.

Contacts

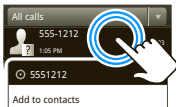
Find it: [👤] **Contacts**



In your contacts list:

- To edit a contact, open it and touch Menu [⌘] > **Edit**.
- To quickly send an email, delete, and more, touch and hold a contact.
- To search, just type a name.

To save a recent call as a contact, touch [📞] **Dialer** > [📞] touch and hold the call, then choose **Add to contacts**.



Social Networking

You can add your **Facebook**, **MySpace**, **Twitter**, or other accounts to your phone at any time. If you don't have accounts, you can visit their websites to set them up.

Find it: Menu [⌘] > **Settings** > **Accounts** > **Add account**

Sign into your account with the user name or email and password you set up on that account (the same as on your computer).

When you sign into social networking accounts, you'll see your friends and contacts in your **Contacts** list, and your status and updates can appear in **Social Status** and **Happenings** widgets.

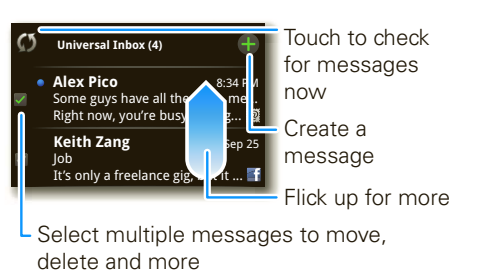
Twitter and **MySpace** messages will always appear as "read" on your phone, but your phone notifies you when you receive a new message. MySpace marks your messages as "read" online.

After you add a social networking account, you can see and respond to friends' updates with a **Happenings** widget on your home screen.



Email & Text Messages

Find it: > **Messaging** > **Universal Inbox**



In your inbox:

- To create an email, text, or other message, touch . Choose the message type, then enter the recipient and message. In text messages and emails, touch Menu for options.
- To forward, save attachments, or use other options, open a message, then **touch and hold** it.



Please don't text and drive.

To add email accounts, touch Menu > **Settings** > **Accounts** > **Add account**.

- Email** is for most personal and other accounts that aren't on a Microsoft® Exchange Server.

To sign into your account, use the user name or email and password that you set up on that account (the same as on your computer). For account details, contact the account provider.

When you sign into your account, you may see your friends and contacts in your **Contacts** list.

- Corporate Sync** is for work email accounts on a Microsoft® Exchange Server. Enter your user and server details from your business IT department.

Note: This requires an enterprise data plan. Some work accounts might require you to add a password lock to your phone for security.

To change your settings, touch > **Messaging** > Menu , then touch:

- Manage accounts** to change your user name or password (or server settings for email).
- Edit Universal Inbox** to choose which accounts show messages in the **Universal Inbox**.
- Messaging Settings** to set the notification for each account type (along with other preferences for email).

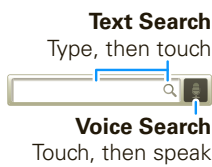
Voice Input & Search

If you open a new message or other text box when your phone is closed, you can touch the **voice** icon on the display keypad to speak text or names.

To use voice dial, touch **Dialer** > Menu > **Voice dial**. Then, say a phone number or a name from your **Contacts**.

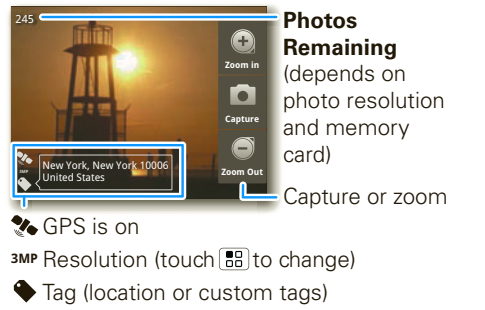
To use Google Voice Search™, touch the voice icon on a Search widget or open your phone to press and hold Search on the keypad.

Your phone searches your apps, **Contacts**, and the Web. To change search settings, touch Menu > **Settings** > **Search**.



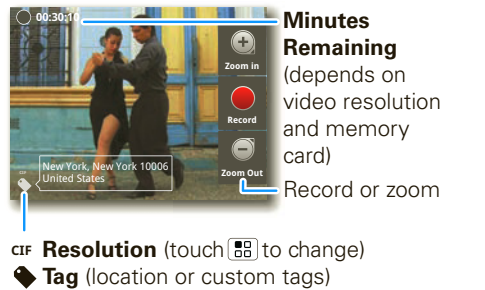
Photos & Videos

Find it: > **Camera**



To open your camera's **Settings**, touch Menu . Photos are stored on your memory card.

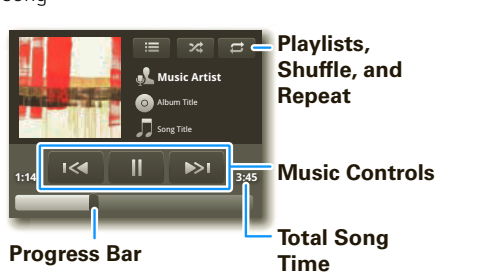
Find it: > **Camcorder**



Before you record a video to send in a message, touch Menu > **Settings** > **Video Resolution** > **Small**.

Music Player & Radio

Find it: > **Music** > **My Music** then choose a song



Tip: When a song is playing, you can add it to a playlist by touching Menu > **Add to playlist**.

Find it: > **AT&T Radio**



AT&T Radio lets you bring 400+ stations anywhere you go. Enjoy all the best in music, from Hip-Hop and R&B to Rock, Pop, Latin and more, PLUS the best in talk radio.

Note: AT&T Radio requires a subscription and data plan.

Apps & Updates

Find it: > **Market**



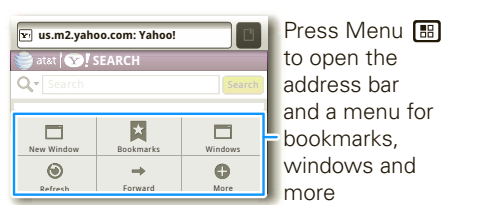
In **Market**:

- To find an app, touch the search icon or Menu > **Search**. To download, touch the app.
- To reinstall downloaded apps or load your apps on a new device, touch **Downloads**.
- To get help, touch Menu > **Help**.

To manage or remove apps on your phone, touch Menu > **Settings** > **Applications** > **Manage applications**. Touch an app in the list, then touch **Uninstall** (for apps you downloaded), **Clear cache**, or other options.

Web

Find it: > **Browser**



To go to a web page, just open your phone and type the URL address.



Zoom

To zoom in or out, slide two fingers apart or together

AT&T Features & Services

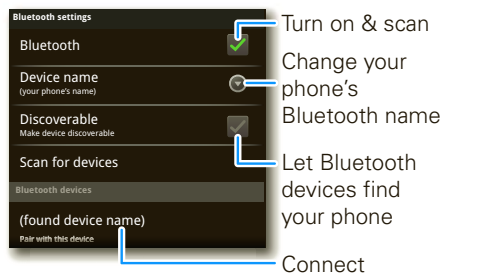
Note: To use AT&T services, you need to turn off Wi-Fi® power.

- AT&T Maps & Navigator**—Check maps and get driving directions quickly and conveniently. AT&T Navigator requires a separate subscription.
- Instant Messaging (IM)**—Send IMs to your buddy list using your favorite service.
- Mobile Video**—Watch news, sports, weather, and entertainment video clips.
- MobiTV**—Transform your phone into a wireless TV. MobiTV requires a subscription and data plan, and is not available in all areas. Programs are subject to change.
- Mobile Banking**—Check your account balances, transfer funds between eligible accounts, view and pay bills. To find out if your bank supports Mobile Banking, visit att.com/mobilebanking, or contact your financial institution.

For information on setting up or using these services, visit att.com/Tutorials. To add these services, contact your local AT&T store or call 1-800-331-0500.

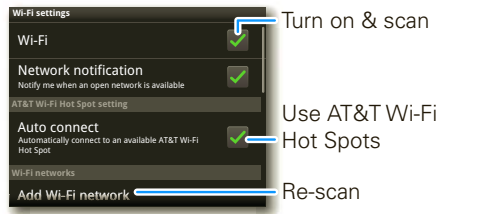
Bluetooth® & Wi-Fi® Connections

To connect a **Bluetooth headset** or car kit, touch Menu > **Settings** > **Wireless & networks** > **Bluetooth settings**.



Note: Using a mobile device or accessory while driving may cause distraction and may be illegal. Always obey the laws and drive safely.

To connect to a **Wi-Fi network** for fast Internet access and to download data, touch Menu > **Settings** > **Wireless & networks** > **Wi-Fi settings**.



See www.attwifi.com for terms and conditions.

Tip: Airplane mode turns off your Bluetooth, Wi-Fi, and network connections—useful when flying. Press and hold Power > **Airplane mode**.

Memory Card & USB

Your phone comes with a removable memory card already installed. You need it for some features on your phone, like **Camera**.

To manage memory card files, touch > **File Manager** > **Memory card**. Touch a file or folder to open, touch and hold a file to **Delete** or **Share**.

You can transfer your pictures, videos, music, ringtones and more, from your computer to the memory card in your phone:

- Connect a Motorola micro USB data cable from your phone's micro USB port to a USB port on your computer.
- Your phone should show in the notification bar. Flick down the notification bar and touch to choose a memory card connection. You should be able to access the memory card from your computer.

Icons & Battery Life

At the top of the screen, icons on the left notify you about new messages or events (flick the bar down for details). Icons on the right tell you about phone status:

	Bluetooth® active		network (full signal)
	GPS active		network (roaming)
	Wi-Fi active		GPRS (fast data)
	downloading		EDGE (faster data)
	vibrate		3G (fastest data)
	silent		flight mode
	mute call		battery (charging)
	speakerphone active		battery (full charge)
	alarm set		Google™ sync active

To get the most out of your battery, touch Menu > **Settings** > **Battery Manager** > **Battery Profile**, then choose:

- Performance Mode** for constant data transfer and battery use.
- Battery Saver Mode** when your battery is low.
- Smart Mode** if you want to set **Battery Profile Options** that limit your data and wireless connections during off-peak hours.

Be aware that the following could reduce battery life between charges:

- recording or watching videos, listening to music or taking pictures.
- widgets that stream information to your home screen, like news or weather.

Motorola Mobility, Inc.
Consumer Advocacy Office
600 N US Hwy 45
Libertyville, IL 60048
www.hellomoto.com
Note: Do not ship your product to the above address. If you need to return your product for repairs, replacement, or warranty service, please contact the Motorola Customer Support Center at:
1-800-734-5870 (United States - Android products)
1-800-331-6456 (United States - all other products)
1-888-390-6456 (TTY/TDD United States for hearing impaired - all products)
1-800-461-4575 (Canada - all products)
Certain features, services and applications are network dependent and may not be available in all areas; additional terms, conditions and/or charges may apply. Contact your service provider for details.
All features, functionality, and other product specifications, as well as the information contained in this guide, are based upon the latest available information and believed to be accurate at the time of printing. Motorola reserves the right to change or modify any information or specifications without notice or obligation.
MOTOROLA, the Stylized M Logo, MOTOBLUR and the MOTOBLUR logo are trademarks or registered trademarks of Motorola Trademark Holdings, LLC. © 2010 AT&T Intellectual Property. Service provided by AT&T Mobility. All rights reserved. AT&T, the AT&T logo and all other AT&T marks contained herein are trademarks of AT&T Intellectual Property and/or AT&T affiliated companies. The Bluetooth trademarks are owned by their proprietor and used by Motorola Mobility, Inc. under license. **Wi-Fi** is a Certification Mark of the Wireless Fidelity Alliance, Inc. Google, YouTube, Picasa, Gmail, and the Google logo are trademarks of Google, Inc. Facebook is a registered trademark of Facebook, Inc. Microsoft, Windows, Windows Me, and Windows Vista are registered trademarks of Microsoft Corporation in the United States and other countries. All other product or service names are the property of their respective owners.
© 2010 Motorola Mobility, Inc. All rights reserved.
Caution: Changes or modifications made in the radio phone, not expressly approved by Motorola, will void the user's authority to operate the equipment.
Product ID: MOTOROLA **FLIPOUT** with MOTOBLUR (MB511)
Manual Number: 68000202724-A