



MOTOROLA

Bluetooth® USB Adapter
And Making VoIP Calls

MOTOSTART



6809495A86-A

READ THIS

You MUST install software before connecting the Bluetooth adapter to your computer. Do NOT insert the Bluetooth adapter into a USB port until prompted by the software during installation.

For additional assistance, visit www.hellomoto.com

or call the Motorola Help desk at: 1-877-MOTOBLU

DO THIS FIRST

Install the software before connecting the Bluetooth PC adapter to a USB port until prompted by the software during installation.

For more information, please visit our website at: www.hellomoto.com/bluetooth
or call 1-877-MOTOBLU (1-877-668-6258)

START HERE >

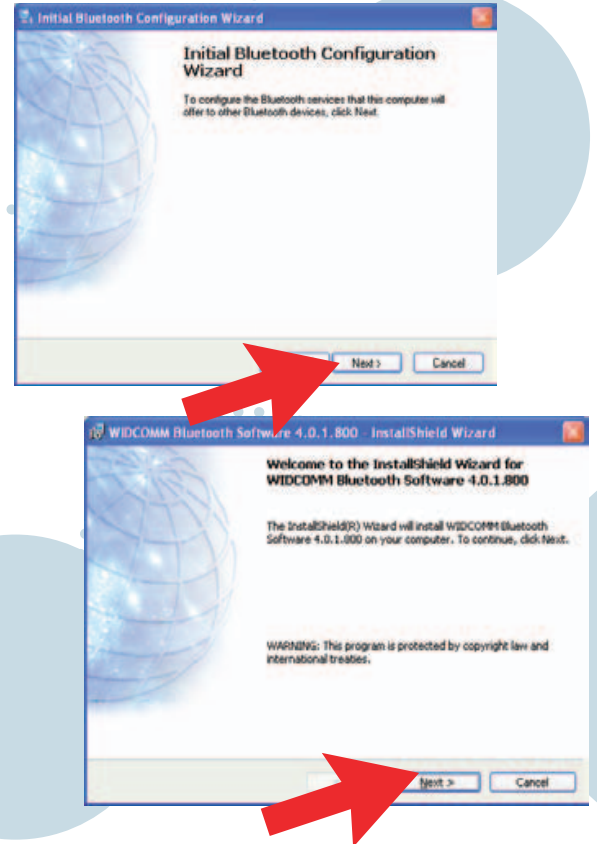
The following steps describe how to install the software on a computer running the Microsoft Windows® XP operating system. Minor differences exist when installing this software on other Windows operating systems.

1

Stop all running programs and insert the installation CD into the CD-ROM drive. The installation starts automatically and guides you through the installation. If the installation does not start automatically, find the SETUP.exe file on the CD and double click it to start the installation.

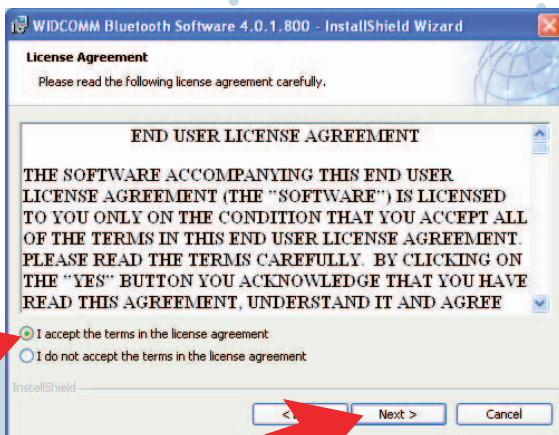
2

Welcome to Bluetooth® software.



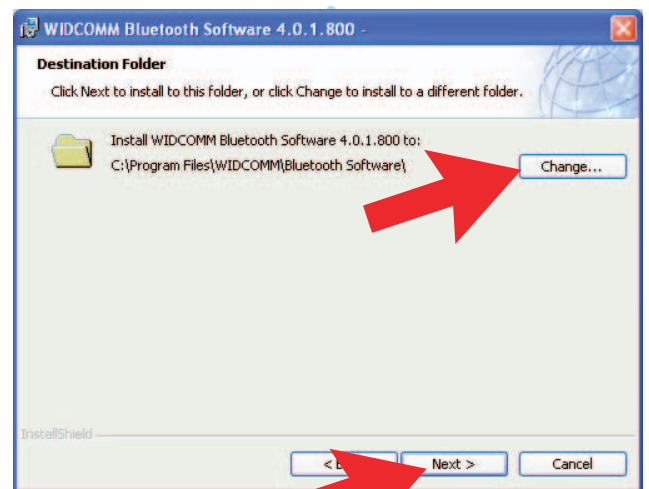
3

Accept license agreement.

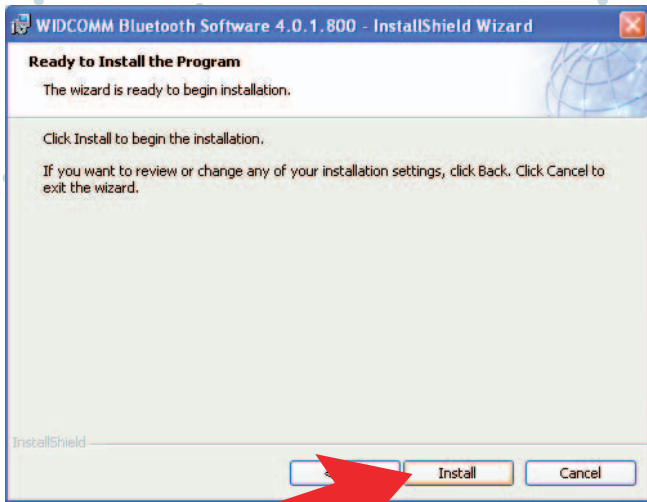


4

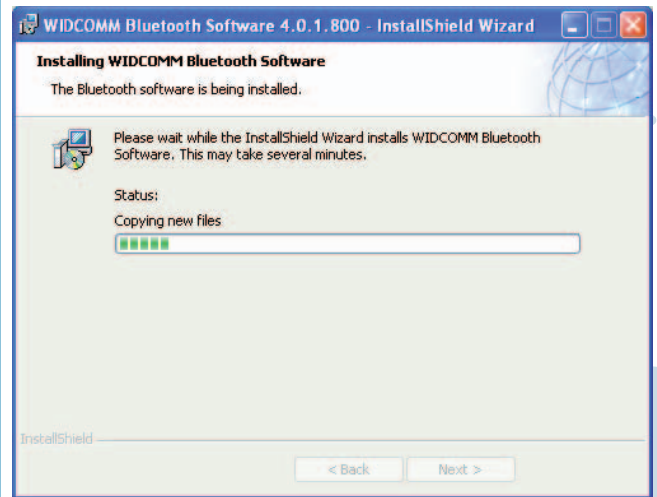
Confirm or change software destination location.



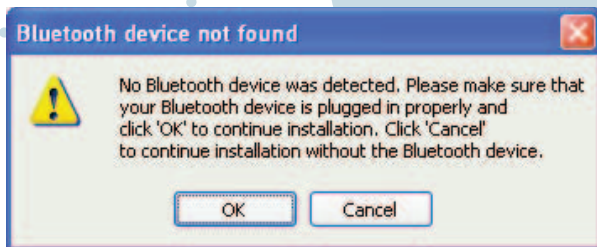
5 Start installation.



6 Installation begins.



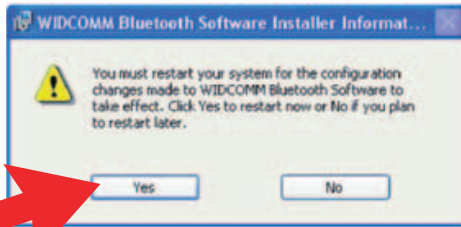
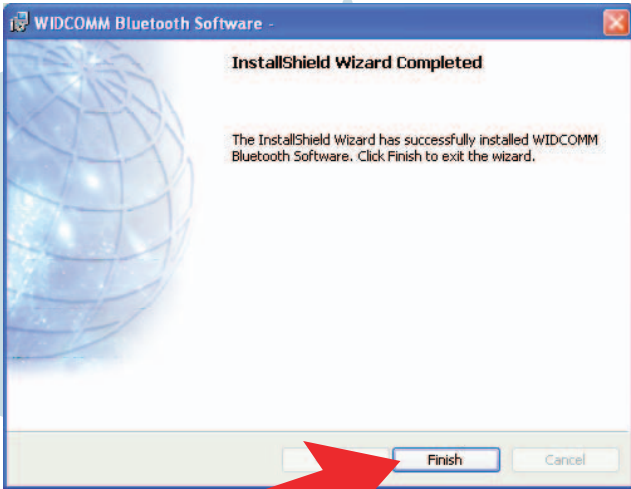
7 Bluetooth device not found message displays. Do NOT respond until you install the adapter.



8 Insert adapter into USB port. Click OK in Bluetooth device message (see step 7) if installation does not continue.




9 Complete the installation and restart your computer.



10 Verify Bluetooth adapter is ready to receive and transmit data (LED is solid blue).



11 Right click  and select Start Using Bluetooth.



MOTOROLA and the Stylized M Logo are registered in the US Patent & Trademark Office.

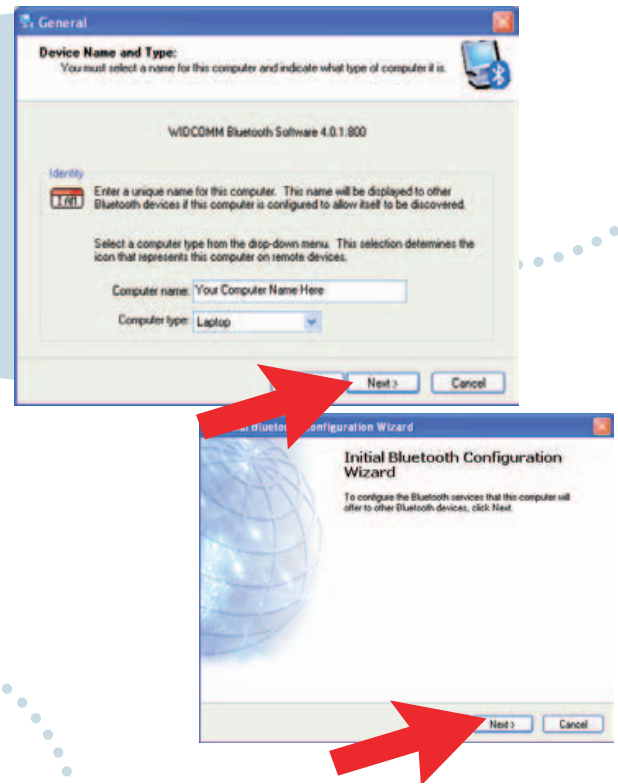
The Bluetooth trademarks are owned by their proprietor and used by Motorola, Inc. under license. Microsoft, Windows, ActiveSync, Windows Media, and MSN are registered trademarks of Microsoft Corporation; and Windows XP, Windows Mobile and Microsoft.net are trademarks of Microsoft Corporation. All other product or service names are the property of their respective owners.

www.hellomoto.com

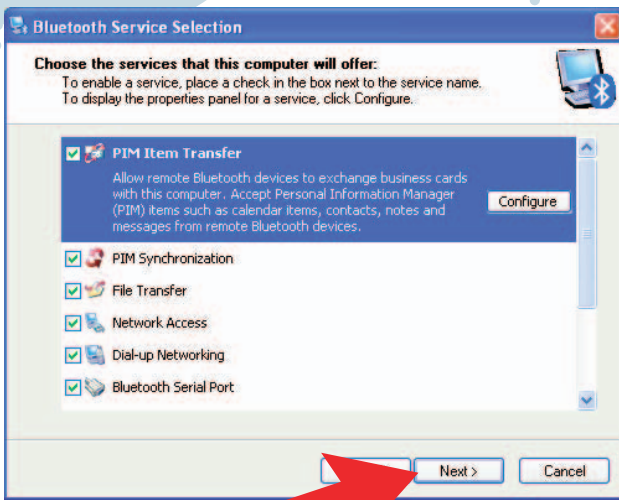
12

 Complete the initial Bluetooth configuration wizard.

13

 Enter computer information and click Next. On the Initial Bluetooth Configuration wizard window, click Next.

14

 Select and configure services.

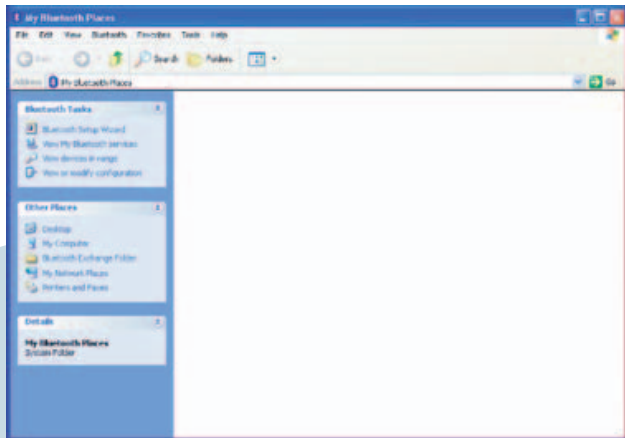
15

 To configure another device, click Next. Otherwise, click Skip. Click Finish.

Continue steps on other side >

16 Pairing with your Bluetooth Device

Open Bluetooth Explorer by double clicking My Bluetooth Places on your computer desktop.



17 Make sure your Bluetooth device is powered on and can be found.

For the H500 Headset: To prepare the H500 headset to be found, make sure it is powered off. Then press and hold the Call (center) button until the blue light remains solidly lit .

Press and Hold until light remains solidly lit.

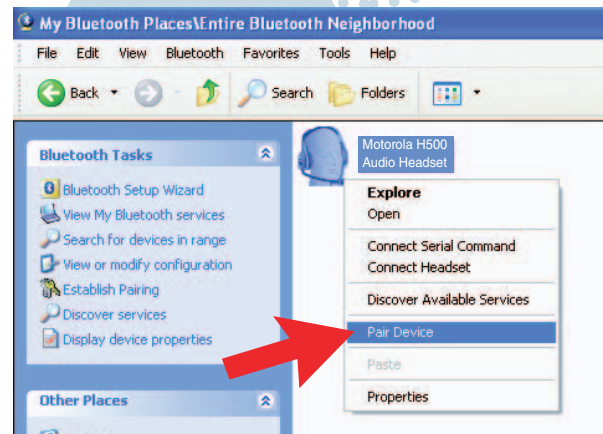


For other Bluetooth devices: Refer to the devices User Guide for detailed information about making the device discoverable (putting it in Pairing Mode).

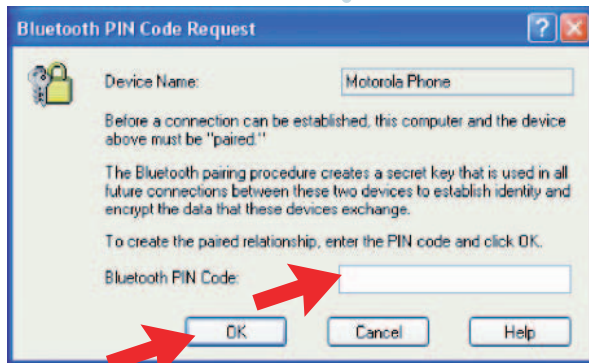
18 On your computer, search for Bluetooth devices. Make sure the device you want to communicate with is on and can be found. (i.e. H500 headset).



19 Right click the device and select Pair Device.

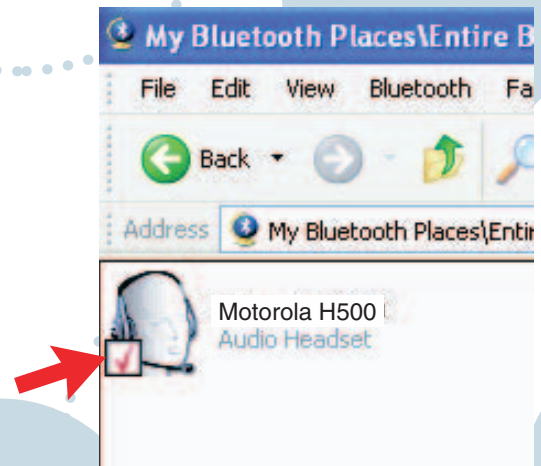


20 For Motorola headsets: Enter the 4-digit PIN code 0000 and click OK.



For all other devices: Follow the prompts for the device. When prompted for a PIN code, enter the code specified in the device User Guide (for Motorola devices, this code is usually 0000 or 1234). The code **must** be the same on both paired (bonded) devices.

21 A check mark displays next to the device icon indicating a successful pairing (bond). Bluetooth services are now ready to be used.

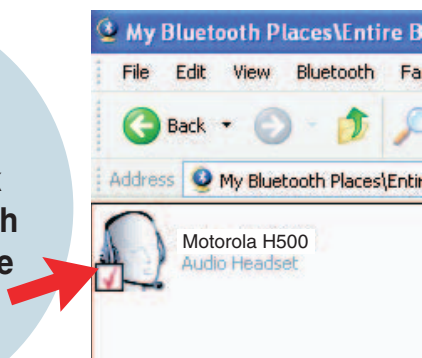


22 Making VoIP Calls

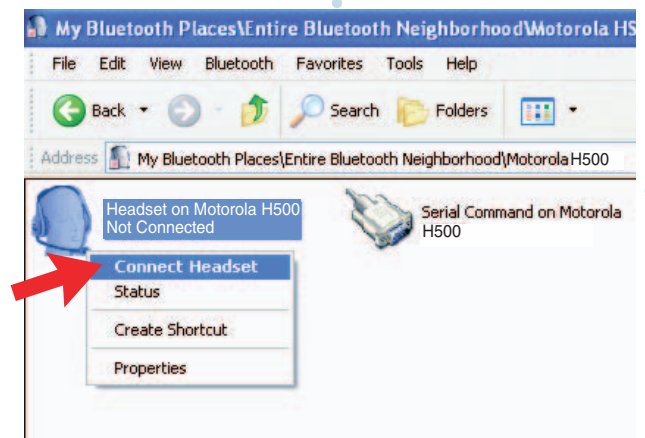
Using a Bluetooth Headset or audio device and computer, you can make Voice over IP (VoIP) calls. The following steps describe how to make VoIP calls.

Double-click the Bluetooth audio device icon (that was paired with the computer in step 21).

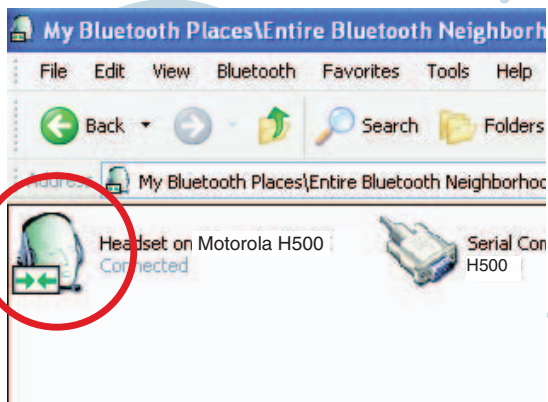
Double-click the Bluetooth Audio Device Icon.



23 Right click the audio device icon and select Connect Headset.



24 When the device is successfully connected, the icon turns green.



Note: The headset will beep. Press the Call (center) button once to complete the connection.

25

Launch the VoIP program and initiate a call. The VoIP call audio is routed to your Bluetooth headset.


Note: If no audio is heard through the Bluetooth headset then, manually set the audio settings of the VoIP program to be Bluetooth Audio.

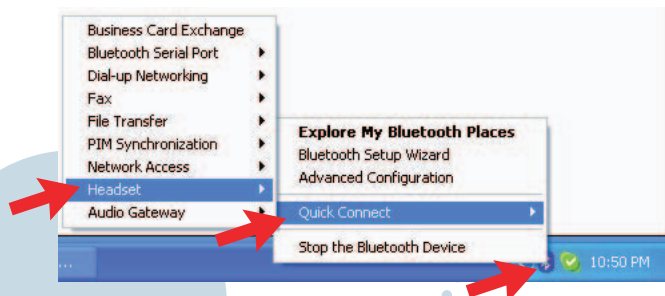
To set Bluetooth Audio manually when using Skype: Go to the Tools menu, select Options, and then Sound Devices.

Not all features of Bluetooth headset may be available during VoIP calls.


Note: Pressing the headset Call (center) button disconnects the headset from the computer but may not end the call.

26 When reconnecting your Bluetooth headset to the computer, turn the headset on. The headset will beep. Press the Call (center) button once to complete the connection.

If the headset does not automatically connect: On the computer system tray, right click the  symbol and select Quick Connect and then Headset.



Bluetooth Explorer Quick Tips

To open Bluetooth Explorer, click **My Bluetooth Places** on your desktop, or double click  in the system tray.

Bluetooth Setup Wizard

Configures devices, connections, and local services.

Entire Bluetooth Neighborhood

Displays Bluetooth adapter devices.

Find Bluetooth Devices

Looks for other Bluetooth devices.

My Device

Displays services on this computer.

Bluetooth Exchange Folder

Contains files and folders available to remote Bluetooth adapter devices.

For more information on how to use this software, see the product Help files for each screen of the software.

For additional assistance

www.hellomoto.com

or call the Motorola
1-877-MOTOBLU

For additional assistance

<http://support.motorola.com>

For more information, please visit our website at:

www.motorola.com/bluetooth

or call the Motorola Help desk at:

(1-877-668-6258)

For more information using Skype visit:

www.skype.com



MOTOROLA and the Stylized M Logo are registered in the US Patent & Trademark Office.

The Bluetooth trademarks are owned by Motorola, Inc. under license. Microsoft, Windows, ActiveSync, Windows Media, and MSN are registered trademarks of Microsoft Corporation; and Windows XP, Windows Mobile and Microsoft.net are trademarks of Microsoft Corporation. All other product or service names are the property of their respective owners.

www.hellomoto.com

© 2005 Motorola Inc.



are registered in the US Patent &

by their proprietor and used by Windows, ActiveSync, Windows Media, Microsoft Corporation; and Microsoft.net are trademarks of Microsoft Corporation. All other product or service names are the property of their