

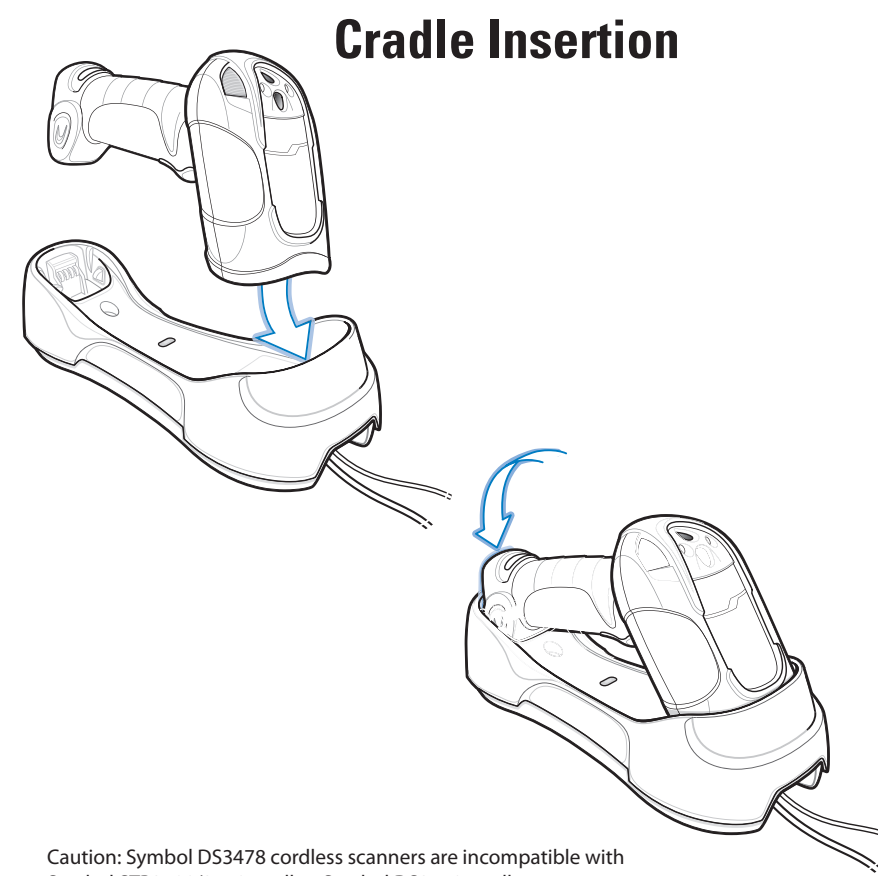
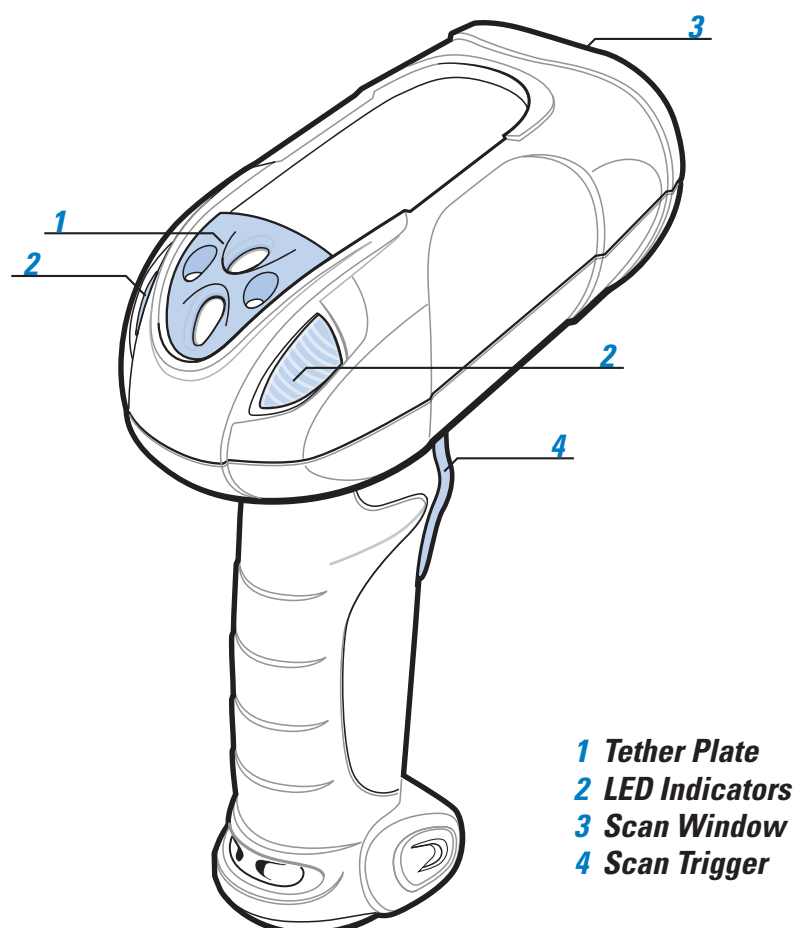
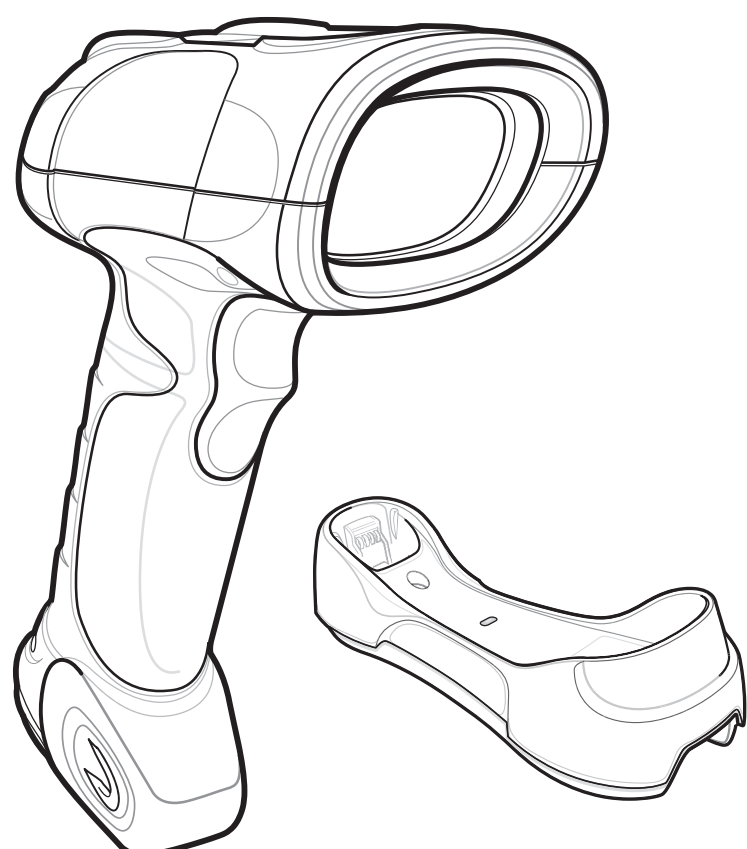
# SYMBOL DS3578

## Quick Start Guide



See Product Reference Guide for more information

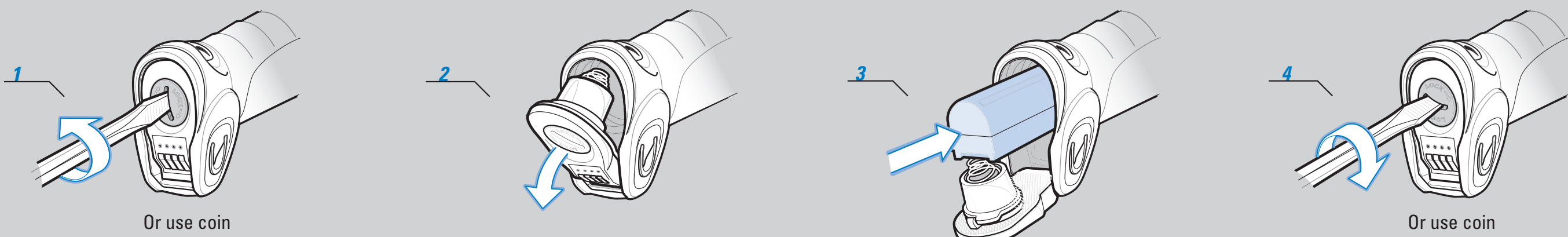
POST IN WORK AREA



### Cradle Insertion

Caution: Symbol DS3478 cordless scanners are incompatible with Symbol STB3508/3578 cradles. Symbol DS3578 cordless scanners are incompatible with Symbol STB3408/3478 cradles.

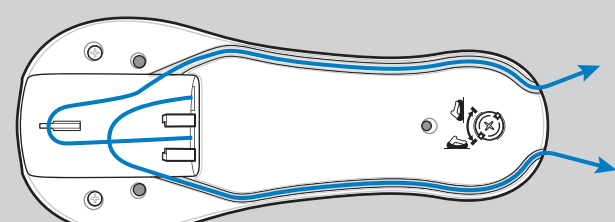
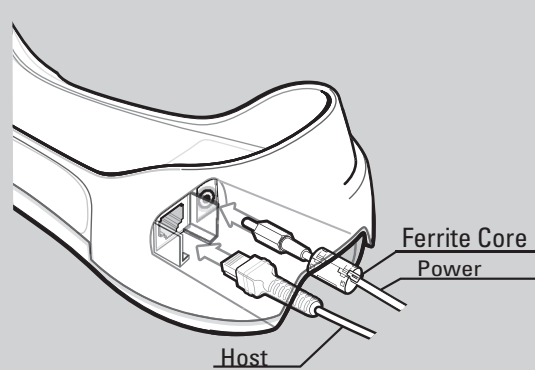
## BATTERY INSERTION/REMOVAL



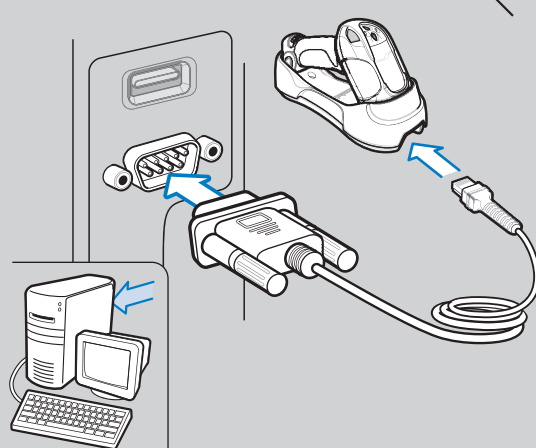
## HOST INTERFACES

NOTE: Cables may vary depending on configuration. When using an external power supply, place the ferrite core on the power cable, insert the power supply cable into the cradle, then insert the host cable. Connect AC power last.

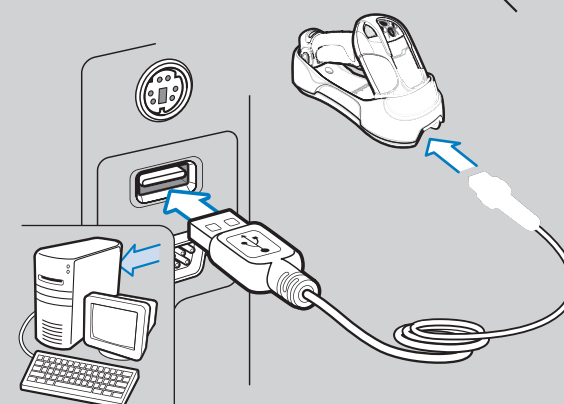
### Cable Connection at Cradle



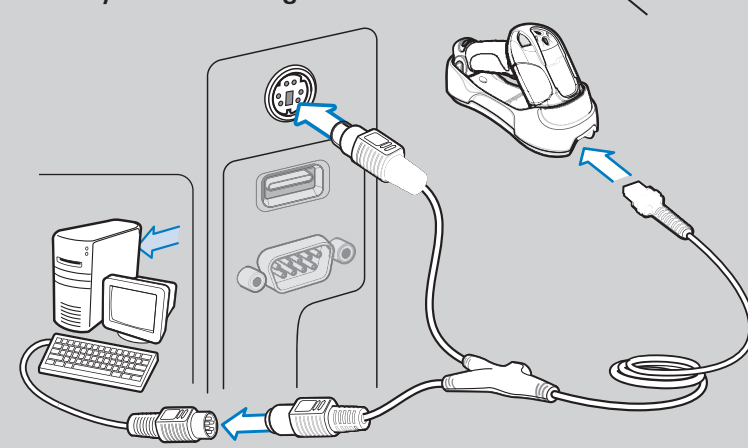
### RS-232



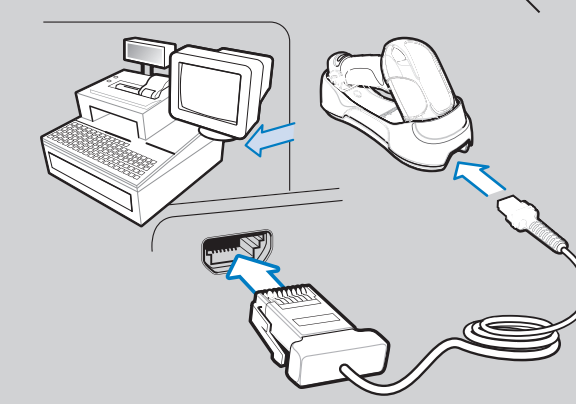
### USB



### Keyboard Wedge



### IBM 46XX



## TROUBLESHOOTING

Please refer to the Symbol DS3578 Product Reference Guide Troubleshooting section for further information.

### Scanner not working

- No power to scanner: Check battery
- End cap not secured correctly: Turn end cap to secure

### Scanner not decoding bar code

- Scanner not programmed for bar code type: Ensure scanner is programmed to read type of bar code being scanned
- Bar code unreadable: Ensure bar code is not defaced; try scanning test bar code of same bar code type

### Scanner decoding bar code, but data not transmitting to host

- Scanner not paired to host-connected cradle: Pair the scanner to the cradle (using the PAIR bar code on the cradle)
- Cradle not programmed for correct host interface: Check scanner host parameters or edit options
- Interface cable is loose: Check for loose cable connections

### Scanned data incorrectly displayed on host

- Paired cradle host communication parameters do not match the host's parameters: Check cradle host parameters or edit options

If data is still not transmitting to host, it may be necessary to recycle power on the cradle.

## SYMBOL DS3578 PROGRAMMING BAR CODES

### Set Defaults

Note: The scanner connection to the cradle is dissolved when Set Defaults is scanned.



SET DEFAULTS

### Unpairing/Disconnection



UNPAIR/DISCONNECT

### USB Host Types



HID KEYBOARD EMULATION



IBM HAND-HELD USB

### IBM 46XX Host Types



PORT 5B



PORT 9B

### Keyboard Wedge Host Types



IBM PC/AT and IBM PC COMPATIBLE

### Carriage Return/Line Feed



SCAN OPTIONS



<DATA><SUFFIX>



ENTER

### Radio Communications Host Types



CRADLE HOST



SERIAL PORT PROFILE (SLAVE)



BLUETOOTH KEYBOARD EMULATION (HID SLAVE)



SERIAL PORT PROFILE (MASTER)

### RS-232 Host Types



STANDARD RS-232



NIXDORF RS-232 MODE B



NIXDORF RS-232 MODE A



ICL RS-232



FUJITSU RS-232



OPOS/JPOS

