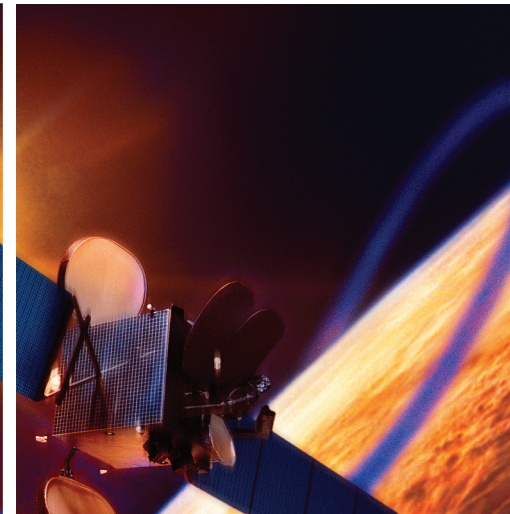
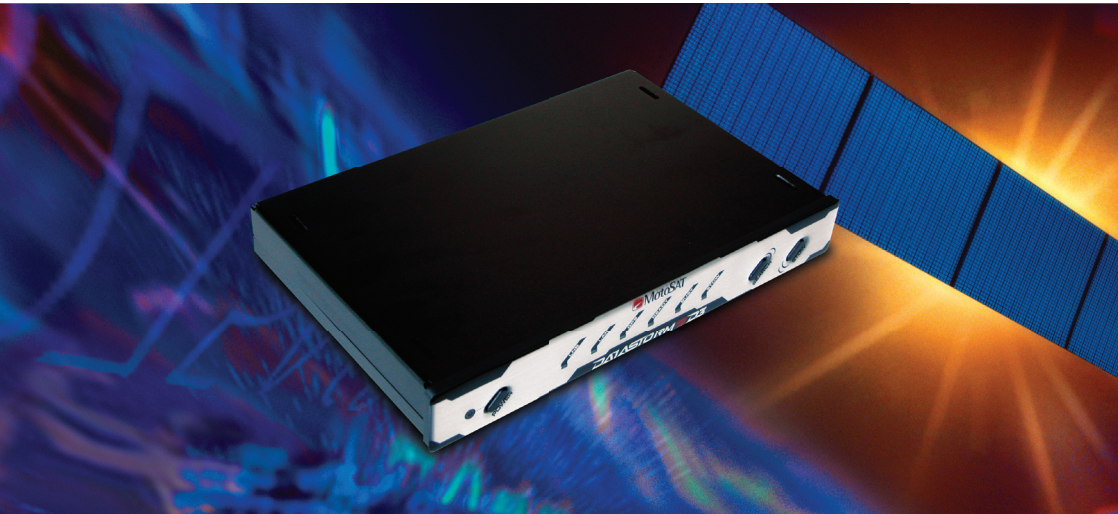


# DATASTORM D3™

UNIVERSAL DVB CONTROLLER



## DATASTORM D3™

**Mobile Internet anywhere is the legacy of the DataStorm product line.** The DataStorm D3 Universal DVB Controller's acquisition routine enables the DataStorm mobile Internet system to move, peak and connect online faster than ever. The D3's integrated DVB circuit uses a dynamic table of satellites to identify virtually any satellite in the sky without the need of a compass calibration or manual pointing procedures. This unique ability, coupled with new aesthetic design elements such as a 33% reduction in chassis depth and a new all-access button array on the front panel, move true push-button operation into the forefront of mobile satellite Internet. The DataStorm D3 powers not only the DataStorm F Series consumer product line, but also the DataStorm XF Series commercial line. The DataStorm XF series includes a .98 and 1.2 meter configuration comparable to the DataStorm F series. The XF Series boasts a revolutionary motors and gears configuration with electronic limit sensors and precise pointing tolerances. The DataStorm D3 utilizes these new mounts along with its new feature set for a complete go-anywhere mobile Internet package.

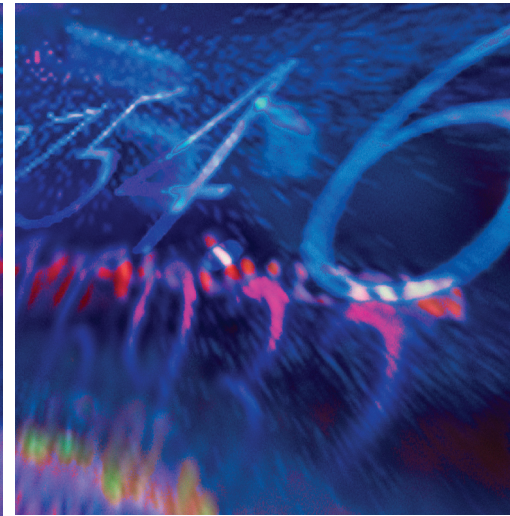
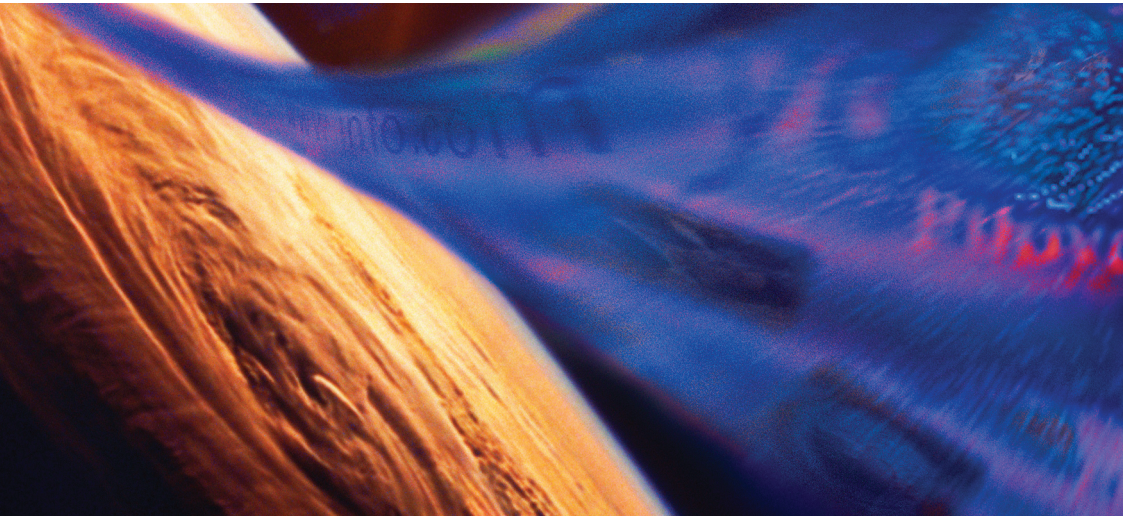
### Benefits of the DataStorm D3 are:

- | Seamless integration with a broad range of satellite platforms
- | No compass calibration or reading needed for operation
- | Advanced mobile features for industrial applications [DVB Identification, Push-button Operation, Global On-Demand Pointing, Etc.]
- | Compatible with all DataStorm F Series and XF Series mounts



# **DATASTORM** **D3**™

UNIVERSAL DVB CONTROLLER



## **DIMENSIONS OF D3**

Length: 10 Inches  
Width: 7 Inches  
Height: 2 Inches  
Weight: 2.5 lbs

## **DVB TUNER**

DVB Tuner Technology: Direct Satellite Identification via DVB

## **CABLING**

Receive cable from dish [outermost coax], Receive Cable to Modem [innermost coax]  
RJ-45 Ethernet Port  
Electrical Data Interface Cable [Control Cable]: 9 conductor 18 AWG 30'

## **ENVIRONMENTAL**

Temperature: Operational from 32°F to 95°F

## **INTERFACE**

Manual: Three-button operation: Power, Search, Stow  
Virtual: Web interface commands; telnet commands also available

## **SOFTWARE**

D3 Software: Embedded firmware  
Maintenance: Via web interface upload

## **MODEM COMPATIBILITY**

Virtually any satellite platform  
DiRECWAY: DiRECWAY DW4020, DW6000, DW7000, DW7700 [no DW4000];  
iDirect: NetModem 2 Plus, Infinity 3100 & 5100  
UNASAT VIASAT Surfbeam

