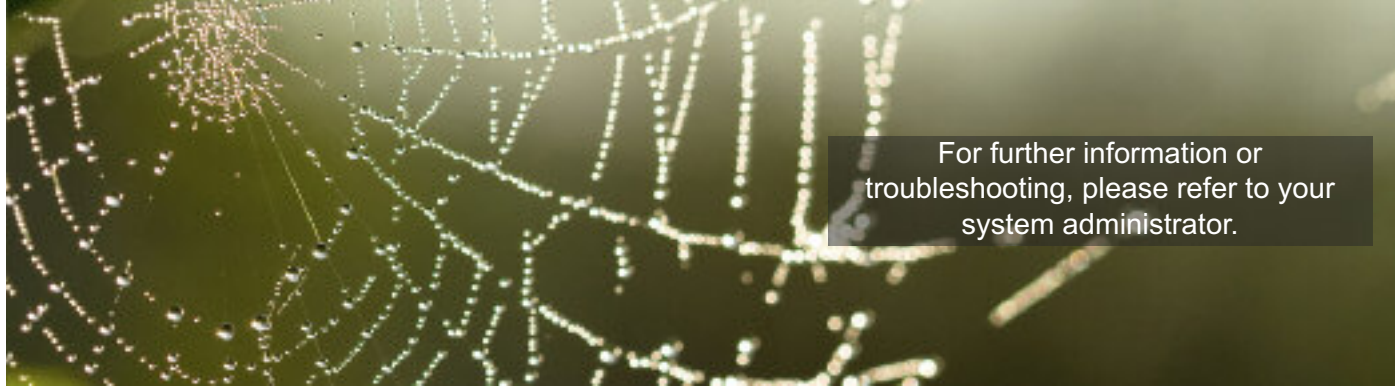


Further instructions are
available from the
multitone support site
www.multitone.com



For further information or
troubleshooting, please refer to your
system administrator.

1.



Buttons

(from top to bottom):

Grey button: on/off and alarm
cancel

Blue button: assist alarm

Red button: emergency alarm

2.

Turning on the device

To turn the fob on for the first time, place the device in the
charger and remove after the recommended 12 hours.
The pager may take a few minutes to charge before
turning on. Otherwise, to turn the device on press the
grey button for up to 3 seconds, the device will beep to
acknowledge the action

Turning off the device

To turn the device off, press and hold the grey button for
up to 3 seconds, the device will beep to acknowledge the
action

3.

Charging the battery

- The fob is fitted with a AAA Ni-Mh rechargeable battery
- To charge the battery, place the device in the charger,
the LED will flash to acknowledge charging:
1 flash every 3 seconds – charging
2 flashes every 3 seconds – charged

Do NOT attempt to remove the battery.
Opening the device will invalidate any warranty. Please give
the device to your administrator for return to a Multitone
Agent for service.

4.

Emergency Alarm (red button): (if enabled)

- Send Emergency Assist call (1 or 2 pushes as
configured by supervisor)
- When the Emergency Alert button pressed you will see
the following:
Alarm being sent: Slow flash
Alarm delivered: 2 Fast flashes
Alarm accepted: 3 Fast flashes (only when
accepted by another user)
- To clear a raised alarm press the grey button (short
press)

5.

Assist Alarm (blue button): (if enabled)

- 1 push raises assist alarm (alarm automatically
cleared)
- When pressed you will see the following:
Alarm being sent: Slow flash
Alarm delivered: 2 Fast flashes

Wander Alarm: Upon entering a restricted zone, the fob
activates an alert.

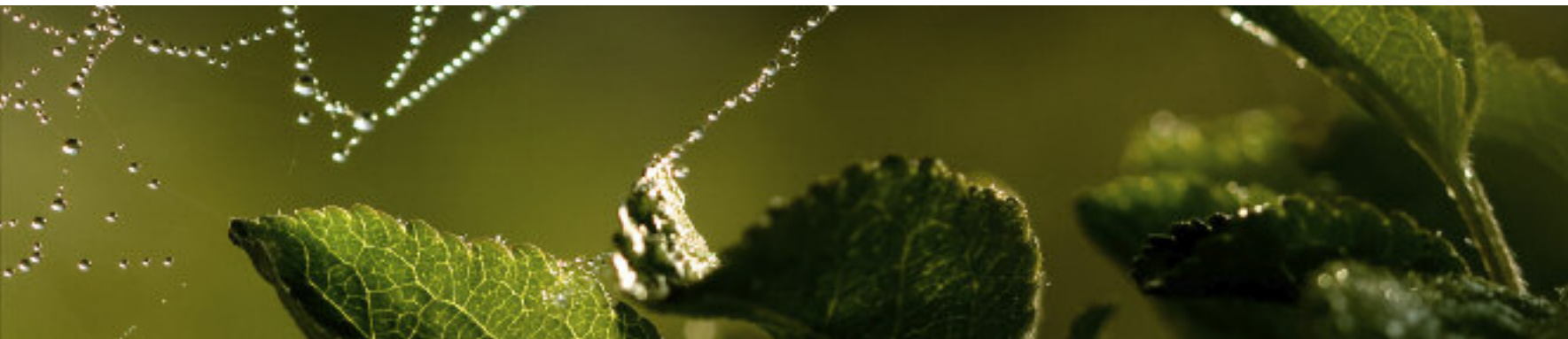
Man-Down Alarm: If unit is tilted more than 45 degrees
for longer than the configured trigger period

Dead-Man Alarm: If a response is not entered to the
periodic prompt

6.

Status Indicators

- To check if the device is on the network press grey
button (short press)
(LED : one flash = off network, two flashes = on network)
- A low battery status alarm will be activated when the
battery reaches less than 25% (audible and vibrate)
- When the fob is out of range of the EkoTek network,
an alarm will be activated to notify the user





EU Declaration of Conformity In Accordance With Article 6.3 of the EU Radio & Telecommunication Terminal Equipment R & TTE Directive 99/5/EC.

As the manufacturer, we declare under our sole responsibility that the EKOF0B equipment conforms to all the applicable essential requirements of the EU Directive 99/5/EC, in accordance with the procedures of Annex II of the Directive and the following technical standards:-

ETSI EN 300 328 (Directive article 3.2);
ETSI EN 301 489-1; ETSI EN 301 489-3 (Directive article 3.1{b});
EN 60950 (Directive article 3.1{a}).

These equipments are designated as Class 1, Sub Class 21 (non-specific short range device) under the terms of the Directive and TCAM (Telecommunication Conformity Assessment and Market Surveillance Committee) classification scheme.

A full copy of the Declaration of Conformity may be obtained from www.multitone.com , or upon application to Multitone.

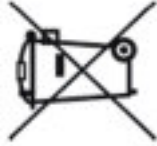
FCC & Industry Canada Statement of Compliance

This device complies with Part 15 of the FCC Rules and Industry Canada Standards RSS GEN & RSS210.

Operation is subject to the following two conditions: (1) this device may not cause harmful interference and (2) this device must accept any interference that may cause undesired operation.

Unauthorised modification to this equipment will void the user's authority to continue to operate the device within the scope of the Industry Canada and FCC Part 15 Rules.

WEEE Directive & Product Disposal



At the end of its serviceable life, this product should not be treated as household or general waste. It should be handed over to the applicable collection point for the recycling of electrical and electronic equipment, or returned to Multitone or their agent, for disposal.

