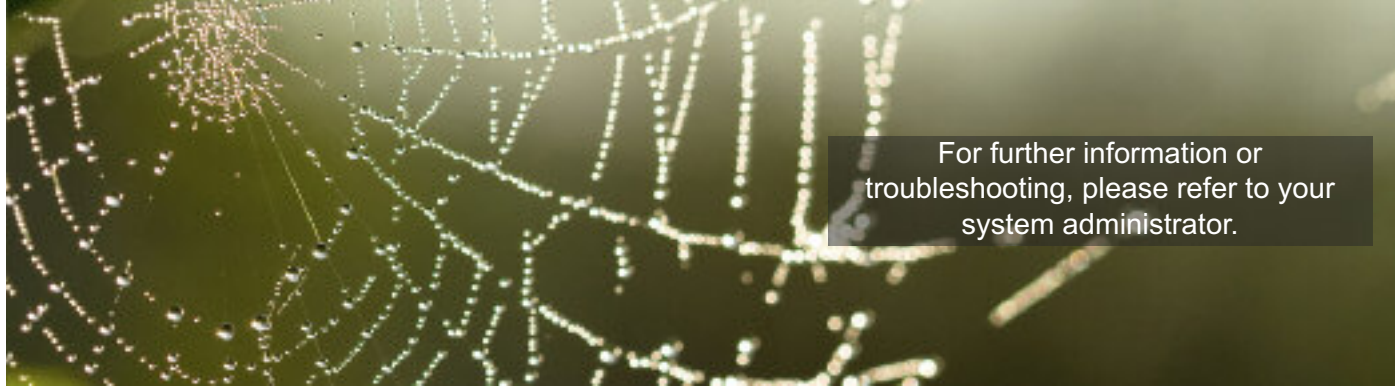


Welcome to your EkoTek Pager Quick Guide

Further instructions are
available from the
multitone support site
www.multitone.com



For further information or
troubleshooting, please refer to your
system administrator.

1.



Buttons (from left to right):

Navigation keys: left arrow, down arrow, right arrow

Blue button: assist alarm

Red button: emergency alarm

2.

Turning on the device

To switch the device on for the first time, place the unit in the charger and charge for a minimum of 12 hours. Otherwise press and hold the ◀ button

Charging the battery

The pager is fitted with an AAA Ni-Mh rechargeable battery. To charge the battery, place the device in the charger.

Do NOT attempt to remove the battery. Opening the device will invalidate any warranty. Please give the device to your administrator for return to a Multitone Agent for service.

3.

Raising and clearing alarms

- When an alarm is raised a text message is sent to configured group of pagers
- The text includes the raising device's identity, the alarm type that has been activated and the current location of the device
- On clearance of an alarm, a text message is sent with the device's identity stating the alarm has been cleared

4.

Emergency Alarm (red button): (if enabled)

- Single click or double click, depending on configuration raises emergency alarm
- The alarm is sent out to the pagers/users configured by the administrator
- Press and hold the ◀ button to clear the alarm
- The alarm will be re-sent at an interval configured by administrator, until the alarm is cleared

5.

Assist Alarm (blue button): (if enabled)

- Single click raises assist alarm and automatically returns to normal state (no alarm clear necessary)
- The alarm is sent out to the pagers/users configured by the administrator

Man-Down Alarm: If unit is tilted more than 45 degrees for longer than the configured trigger period

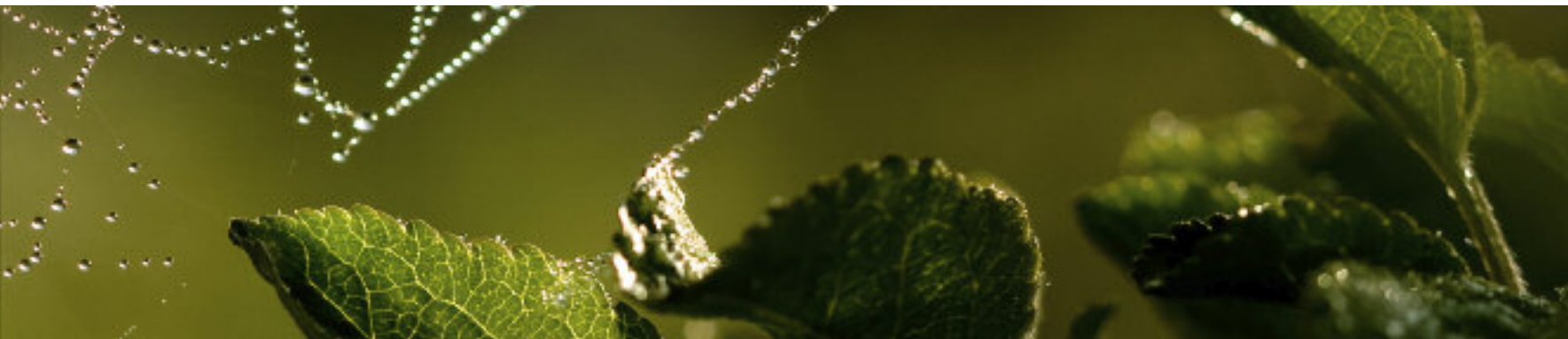
Dead-Man Alarm: If a response is not entered to the periodic prompt

Snatch Cord Alarm: If the pager is snatched, the cord disengages from the body of the pager and sends alarm

6.

Receiving Messages

- Upon receiving a message, the pager will sound an alert, vibrate and activate the backlight depending on profile settings and the message will be displayed
- If multiple messages, use the ▼ and ► buttons to select
- Select the ▼ button to see the available responses (accept and reject or delete)
- Use the ▼ button to scroll to the desired option
- Select the ► button to send the response or delete
- Accept responses will be sent to the user that raised the alarm to show help is on its way





EU Declaration of Conformity In Accordance With Article 6.3 of the EU Radio & Telecommunication Terminal Equipment R & TTE Directive 99/5/EC.

As the manufacturer, we declare under our sole responsibility that the EKOPAG equipment conforms to all the applicable essential requirements of the EU Directive 99/5/EC, in accordance with the procedures of Annex II of the Directive and the following technical standards:-

ETSI EN 300 328 (Directive article 3.2);
ETSI EN 301 489-1; ETSI EN 301 489-3 (Directive article 3.1{b});
EN 60950 (Directive article 3.1{a}).

These equipments are designated as Class 1, Sub Class 21 (non-specific short range device) under the terms of the Directive and TCAM (Telecommunication Conformity Assessment and Market Surveillance Committee) classification scheme.

A full copy of the Declaration of Conformity may be obtained from www.multitone.com, or upon application to Multitone.

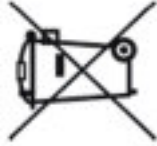
FCC & Industry Canada Statement of Compliance

This device complies with Part 15 of the FCC Rules and Industry Canada Standards RSS GEN & RSS210.

Operation is subject to the following two conditions: (1) this device may not cause harmful interference and (2) this device must accept any interference that may cause undesired operation.

Unauthorised modification to this equipment will void the user's authority to continue to operate the device within the scope of the Industry Canada and FCC Part 15 Rules.

WEEE Directive & Product Disposal



At the end of its serviceable life, this product should not be treated as household or general waste. It should be handed over to the applicable collection point for the recycling of electrical and electronic equipment, or returned to Multitone or their agent, for disposal.

