



Module



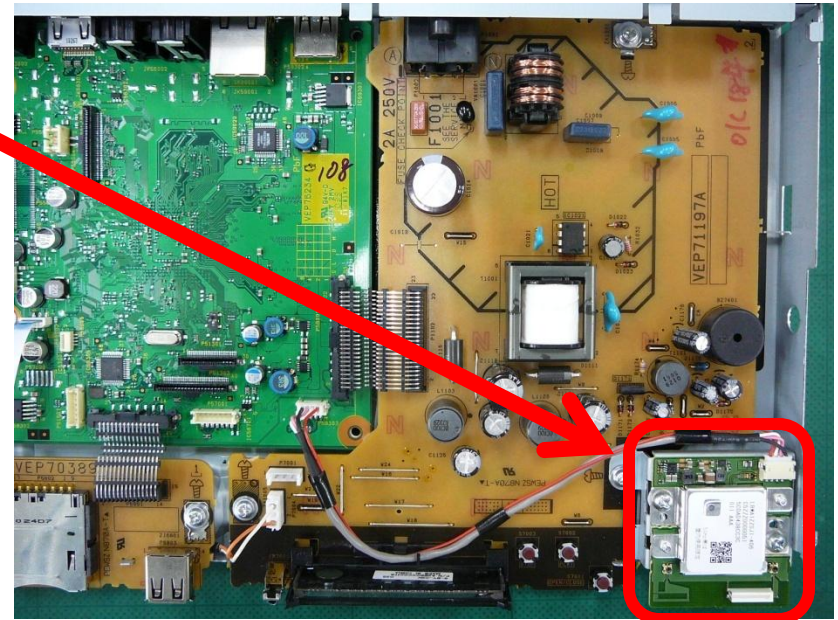
Attachment

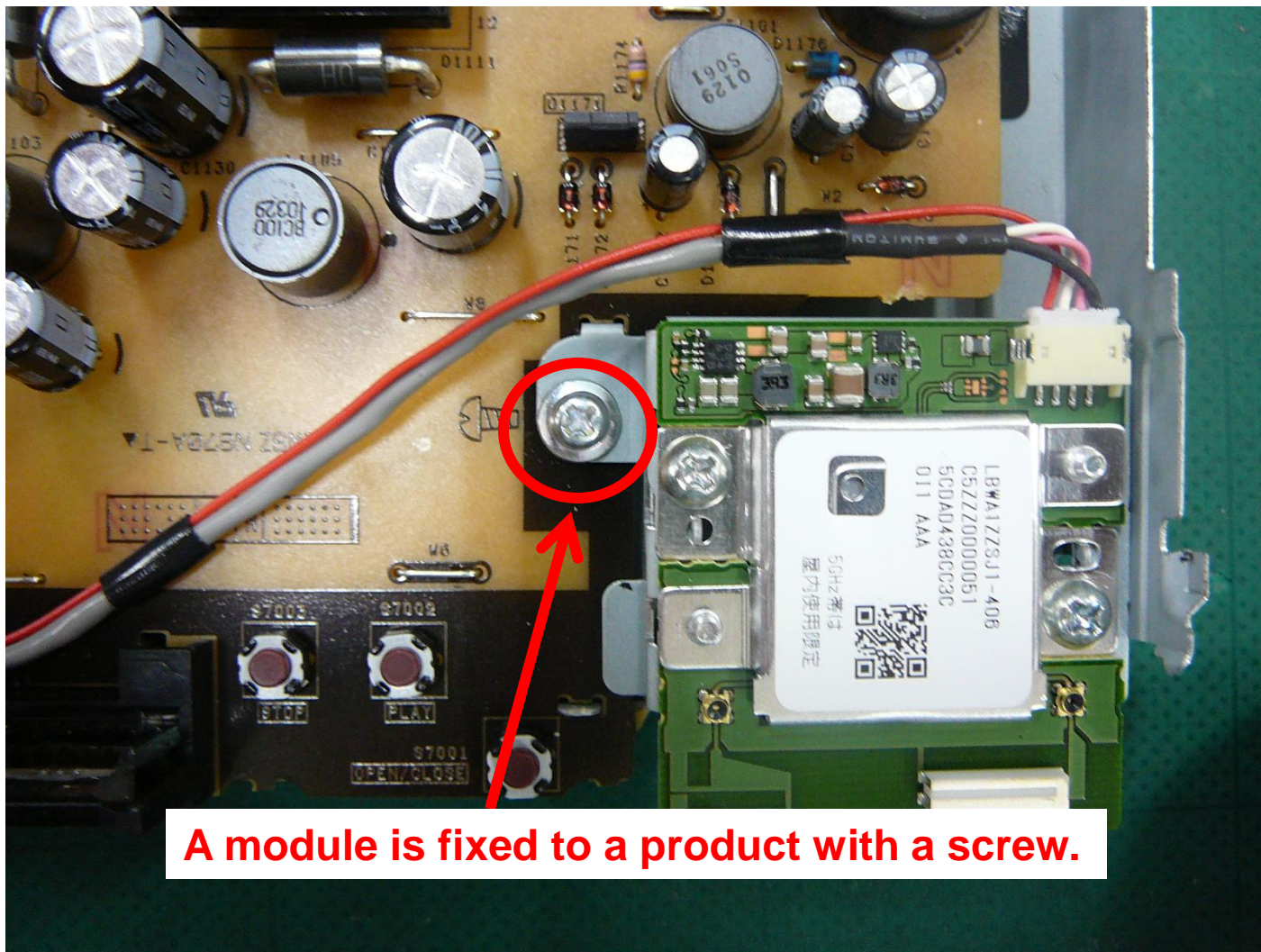


Mount a module on an attachment.
After that, a module is fixed to an attachment by screw.



A module with an attachment is arranged inside a product.





A module is fixed to a product with a screw.

Note:

The following description is indicated on a product.

『Contains Transmitter Module FCC ID: VPY-LBSJ /IC: 772C-LBSJ』