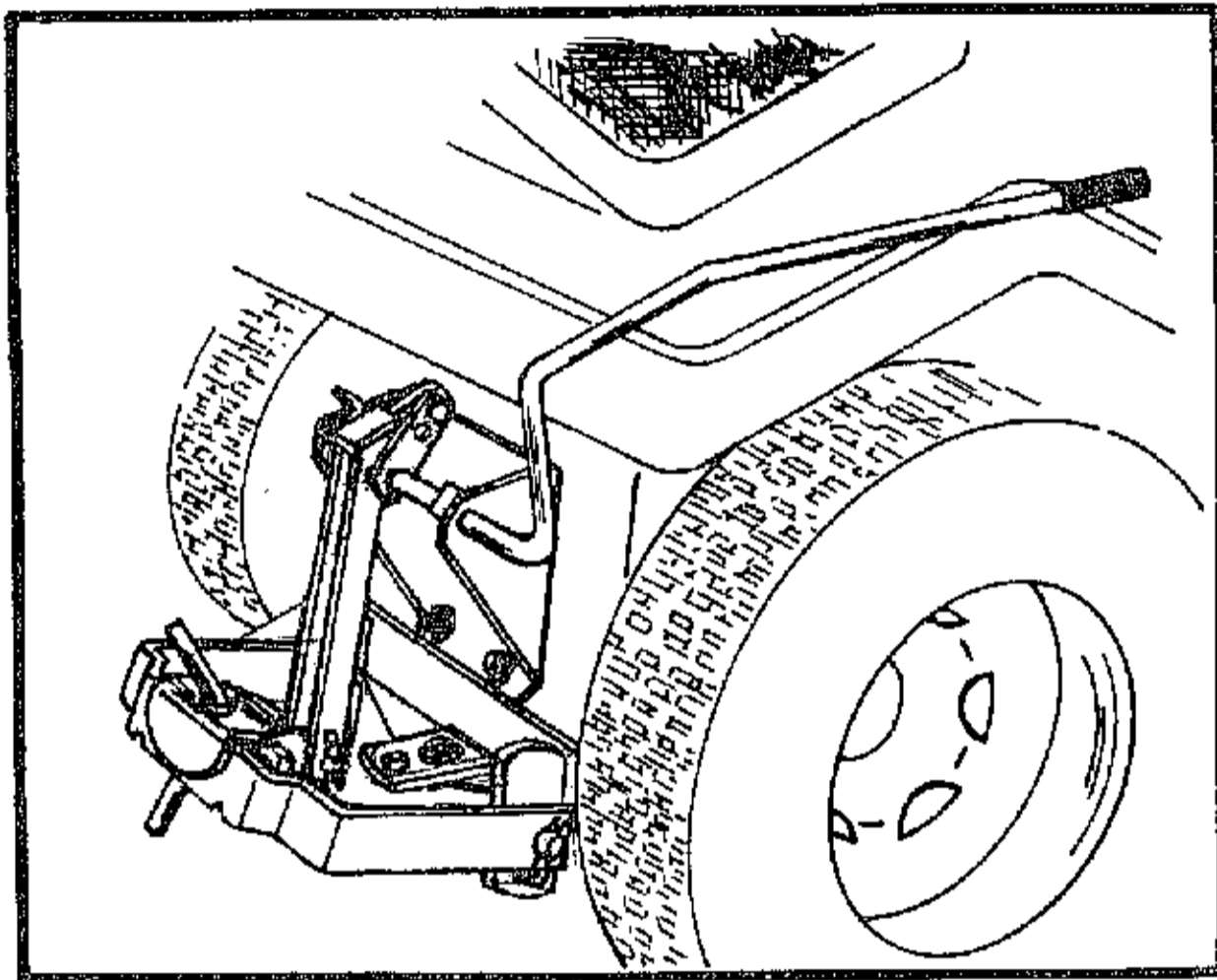


# IMPLEMENT HITCH

## MODEL NO. 2480I

### OWNER'S MANUAL



- Assembly
- Installation
- Operation
- Repair Parts

FOR USE WITH ALL MURRAY  
YARD AND GARDEN TRACTORS FROM  
1985 TO PRESENT

- USE WITH:
- Disc Harrow
  - 10" Plow
  - Cultivator
  - 8 H.P. Tiller
  - Rear Blade

**Caution:** Read Rules for Safe Operation  
and Instructions Carefully

#### LIMITED WARRANTY

We warrant this product to be free from manufacturing defects in normal service for a period of one (1) year commencing with delivery to the original retail user.

Our obligation under this warranty is expressly limited, at our option, of such part or parts as inspection shall disclose to have been defective. This warranty does not apply to defects caused by damage or unreasonable use (including failure to provide reasonable and necessary maintenance) while in the possession of the consumer.

WE SHALL NOT BE LIABLE FOR CONSEQUENTIAL

DAMAGES OF ANY KIND, including but not limited to, consequential labor costs or transportation charges in connection with the replacement or repair of defective parts.

ANY IMPLIED OR STATUTORY WARRANTIES, INCLUDING ANY WARRANTY OF MERCHANTABILITY OR FITNESS FOR A PARTICULAR PURPOSE, ARE EXPRESSLY LIMITED TO THE DURATION OF THIS WRITTEN WARRANTY. We make no other express warranty, nor is anyone authorized to make any in our behalf.

For parts and service, see your local dealer. Use part NAME and NUMBER when ordering.



## RULES FOR SAFE OPERATION

- Know controls and how to stop quickly, READ THE OWNER'S MANUAL.
- Do not allow children to operate the vehicle, do not allow adults to operate without proper instruction and without having read the owner's manual.
- Do not carry passengers. Keep children and pets a safe distance away.
- Always wear substantial footwear. Do not wear loose fitting clothing that can get caught in moving parts.
- Keep your eyes and mind on your tractor/attachment and area being covered. Don't let other interests distract you.
- Stay alert for holes in the terrain and other hidden hazards.
- Keep the vehicle and attachments in good operating condition and keep safety devices in place.
- Keep all nuts, bolts and screws tight to be sure the equipment is in safe working condition.
- The vehicle and attachments should be stopped and inspected for damage after striking a foreign object. The damage should be repaired before restarting and operating the equipment.
- See tractor equipment owner's manual for safe operation of the equipment.
- Do not drive close to creeks, ditches and public highways.
- Watch out for traffic when crossing or near roadways.
- When using any attachments, don't allow anyone near the vehicle while in operation.



### WARNING!

- Assembled Hitch has various pivoting points. Keep Hands away when raising and lowering Hitch.
- Always lower Hitch when Mounting or Removing Attachments.

## TABLE OF CONTENTS

WARRANTY.....	2	OPERATION.....	4
SAFETY RULES.....	2	MAINTENANCE.....	4
ASSEMBLY.....	3-4	REPAIR PARTS.....	5
PRE-USE HINTS.....	4		

## ASSEMBLY

Note: This Sleeve Hitch can be used with several different model Tractors. Included with the Sleeve Hitch are two "U" Nuts (5). Some Tractors do not require use of these "U" Nuts, the Nuts are welded to the back of the Frame on the inside. Tractors requiring use of the "U" Nuts will have two Square holes.

To Assemble your Sleeve Hitch you will need:  
 (2) 9/16" Wrenches  
 (2) 3/4" Wrenches  
 (1) 15/16" wrench

### FOR TRACTORS WITH SQUARE HOLES AT REAR.

Refer to Fig. 1

- Insert the two "U" nuts (5-with nut portion in back) into the Square until Nut aligns with the Round Hole.

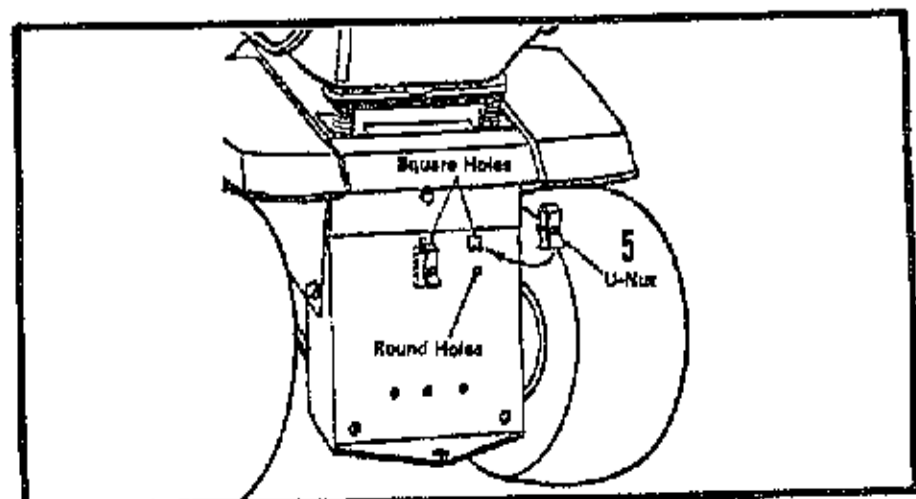


Fig. 1

**FOR ALL MOUNTINGS**

Refer to Fig. 2

- Attach the Mounting Plate of the Lift Handle Assembly (3) to back of Tractor using two 1/2" x 1-1/4" Hex Bolts (6), and Lock Washers (7). Thread the Bolts into existing "Tapped" Holes or the previously assembled "U" Nuts.
- Secure the bottom of the Mounting Plate with 3/8" x 1" Hex Bolts (9), Lock Washers (10), and Hex Nuts (11).
- Tighten all bolts securely.
- Place Handle Grip (22) over end of Lift Handle.

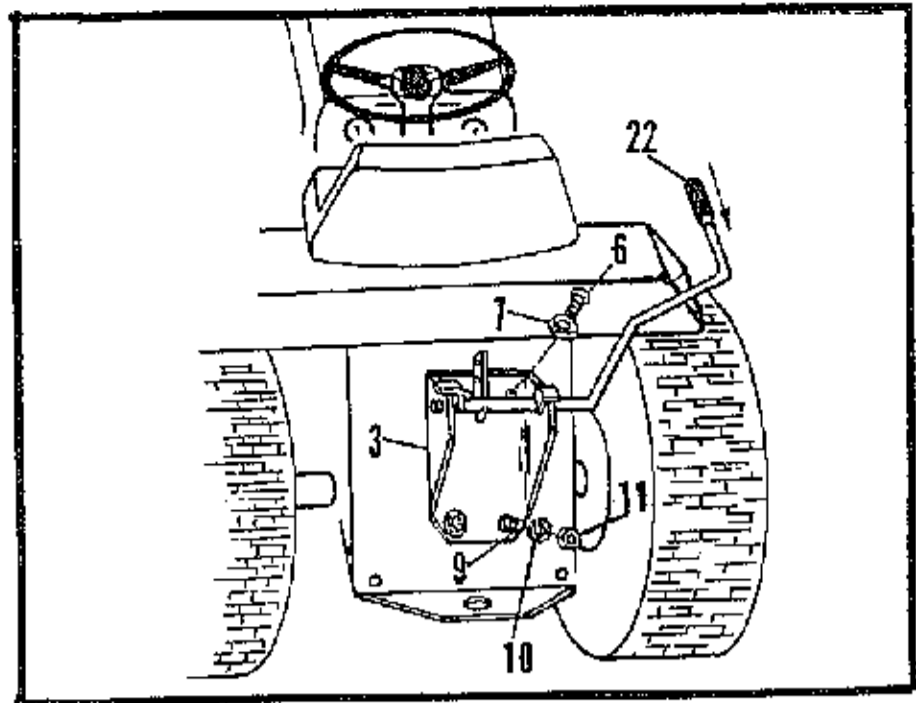


Fig. 2

Refer to Fig. 3

- Attach the Hitch Ball Mounting Bracket (1) to Tractor (resting on top of Tractor Drawbar).
- Secure with three 1/2" x 1-1/4" Hex Bolts (6), Flat Washers (13), Lock Washers (7) and Hex Nuts (8).
- NOTE: Mounting Tabs must be DOWN.
- TIGHTEN SECURELY.
- Attach Short Strap (17) to Lifting Strap (B) on Lift Handle in OUTER hole. Notch in Short Strap must be facing down.
- NOTE: When operating heavier Attachments, such as the engine driven Tiller, position the Short Strap in the Link Assembly into the inner hole of Lift Handle Strap.
- Secure with 1/2" x 1-1/2" Hex Bolt (15) and two 1/2" Hex Nuts (8).
- NOTE: Tighten nuts snugly, but allow for free movement of parts.
- Attach the Lift Link Assembly (4) to the Short Strap (17).
- Secure with 3/8" x 1" Hex Bolt (9) and 3/8" Hex Lock Nut (21). Tighten only snugly - Link must be free to pivot.

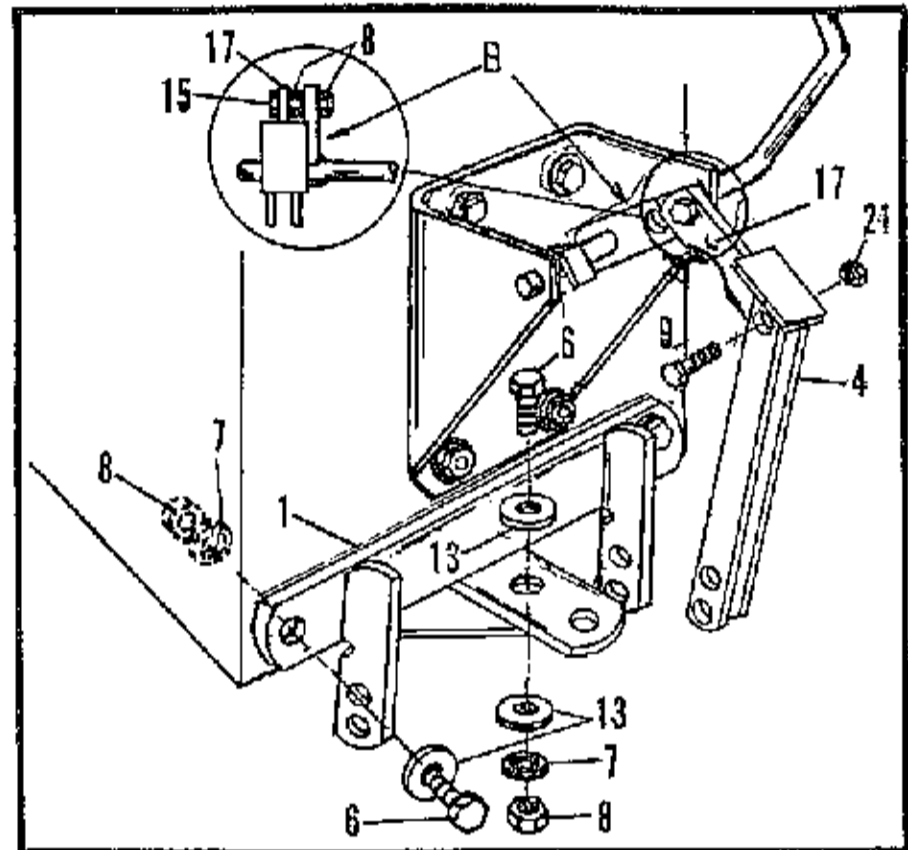


Fig. 3

Refer to Fig. 4

- NOTE: Determine Mounting Holes required for Hitch Ball and Link Assembly, ("A" or "B"). Measure Diameter (height) of rear tires:  
 20" Diameter (height) Tires—Use Holes "A" in Mounting Bracket and Link Assembly.  
 23" Diameter (height) Tires—Use Holes "B" in Mounting Bracket and Link Assembly.
- Mount the Hitch Ball (2) to the Hitch Ball Mounting Bracket (1), using two 1/2" Drilled Pins (12), two 1/2" Plain Washers (13), and Hairpin Cotter (14).
  - Attach Link Assembly (4) to Lift Tab (C), on Hitch Ball (2); using, a 1/2" Drilled Pin (12), a 1/2" Flat Washer (13), and a Hairpin Cotter (14).
  - Thread 5/8" Jam Nuts (20) on two 5/8" x 2" Stabilizer Bolts (16).
  - Thread these two bolts into welded nuts on inside of Hitch Ball (2) until flush with outside of nuts.
  - Install Stabilizer Plate (18) and Hitch Pin (19) as shown.

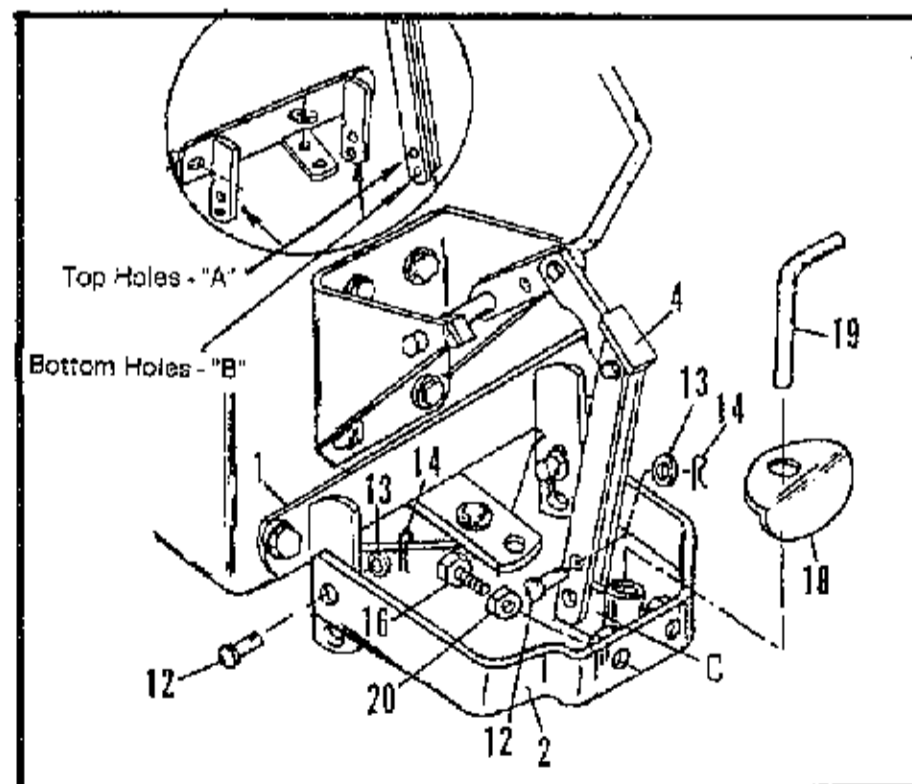


Fig. 4

**PRE-USE HINTS**



**WARNING!**

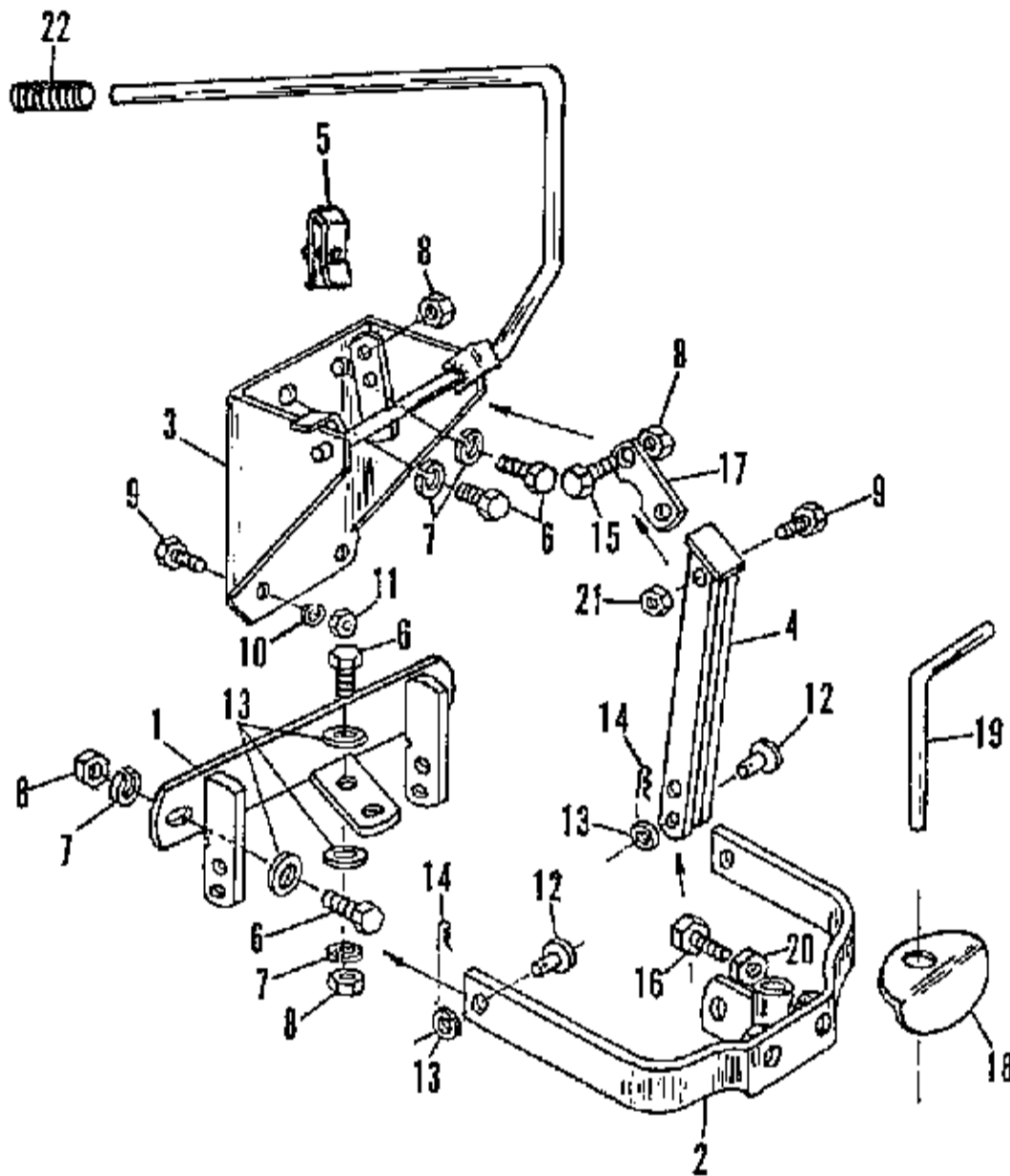
- Assembled Hitch has various pivoting points. Keep hands away when raising and lowering attachments.

- The Mower Deck must be removed when using Sleeve Hitch Attachments. Hitch may remain on mower when using Mower.
- Tire Chains and/or Wheel Weights are required for most Sleeve Hitch Attachments.
- Make sure all Bolts and Nuts are tightened securely.

# OPERATION

## ATTACHING

- Attachments are mounted to Hitch using the "L" pin furnished. Refer to your Attachment Manual for proper Mounting Procedure and Operation of Attachments.
- Attachments are Raised and Lowered by making use of the Hitch Lift Handle. Pull forward to Raise, push Back to Lower.
- Lift Attachments out of ground when turning corners or reversing.



MODEL NUMBER 24801

## STABILIZING

- NOTE:** Most Attachments require Stabilization (elimination of "side to side" movement).
- Turn the 5/8" x 2" (16) Stabilizer Bolts Clockwise against Stabilizer Plate (18) until side to side motion is eliminated. Tighten Jam Nuts against Welded Nuts.
  - Stabilizer Bolts will have to be loosened before Attachment can be removed.
- NOTE:** Important-- Do not stabilize Plow or Disc Harrow Attachments.

## SPECIAL OPERATION

- NOTE:** When operating heavier Attachments, such as the engine driven Tiller, reposition the Link Assembly as follows:
- Refer to Fig. 3.
- Attach Short Strap (17) to Lifting Strap on Lift Handle in INNER hole.
  - Heavier Attachments (engine driven Tiller) will be furnished with a Lift Assist Spring, which mounts to the Sleeve Hitch. Refer to the Attachments Manual.

## MAINTENANCE

- Apply a light coat of grease or oil to Stabilizer Bolts and to all Pivoting Points on Hitch.
- Clean and store in a weatherproof, dry area.
- Touch up any scratches with enamel paint to avoid rusting.

## PARTS LIST

REF. NO.	PART NO.	DESCRIPTION	QTY.	REF. NO.	PART NO.	DESCRIPTION	QTY.
1	H-502-10	Hitch Ball Mounting Bracket	1	12	V-219P	Drilled Pin	3
2	H-190-10	Hitch Bail	1	13	45M1717P	Flat Washer, 1/2"	7
3	H-731-10	Lift Handle Assembly	1	14	D-146P	Hairpin Cotter	3
4	H-629-10	Lift Link	1	15	1M1624P	Hex Bolt, 1/2" x 1-1/2"	1
5	H-632	"U" Nut	2	16	H-293P	Hex Bolt, 5/8" x 2"	2
6	1M1620P	Hex Bolt, 1/2" x 1-1/4"	5	17	H-510-10	Short Strap	1
7	40M1600P	Lock Washer, 1/2"	5	18	H-158-10	Stabilizer Plate	1
8	30M1600P	Hex Nut, 1/2"	5	19	H-130P-01	Hitch Pin	1
9	1M1216P	Hex Bolt, 3/8" x 1"	3	20	31M2000P	Jam Nut, 5/8"	2
10	40M1200P	Lock Washer, 3/8"	2	21	B-1675P	Hex Lock Nut, 3/8"	1
11	30M1200P	Hex Nut, 3/8"	2	22	B-672	Handle Grip	1