

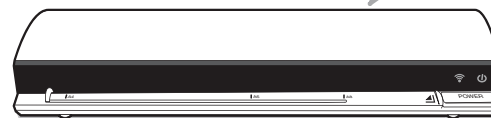


All trademarks are the property of their respective owners and all rights are acknowledged.

Wireless Scanner

For mobile devices. and computers

839692



User Guide



Compatible with iOS, Mac OS X,
Android OS, and Windows 8



Safety and Precautions

- Never store the unit in hot, or very cold, or humid or dusty places.
- For an extended storage period, we recommend storing the unit in a cool and dry place.
- To help keep the scanning area clean, store the unit in a proper case when not in use.
- If the unit is left in extreme cold or hot conditions, allow to adjust to normal room temperatures before use.
- Only use accessories included with the unit.
- When left unused for a long period of time, the unit should be disconnected from the power supply.
- Always handle the unit with care. Avoid dropping and strong impact.
- Keep the lens and roller clean and free from scratches.
- Do not scan sharp objects or hard abrasive surfaces to avoid damage to the lens and other parts
- Operate the unit on a level, well-grounded work surface, and free of excessive vibration.
- Don't open the unit. Risk of electric shock.
- Use only a soft damp cloth to clean the exterior areas of the unit.
- Do not leave the unit within the reach of children.



Discarded electrical and electronic appliance are recyclable and should separate from the household waste. Please actively support in conserving resources and protecting the environment by returning this appliance to the collection centers (if available).



Contents

Safety and Precautions	2	From Android mobile devices	19
Contents	3	From Mac computers	20
Supported Devices	4	From Windows 8 devices	21
Unpack	5	Clean Rollers	22
Scanner Parts	6	From iPad, iPhone, and iPod touch	22
Charge the Battery	7	From Android mobile devices	23
Download and Install iScan Air	8	From Mac computers	24
From iPad, iPhone, and iPod touch	8	From Windows 8 devices	25
From Android mobile devices	9	Clean Lens	26
From Mac computers	9	Helpful Hints	27
From Windows 8 devices	10	Specifications	28
Connect via Wi-Fi Network	11		
Scan and Save	13		
From iPad, iPhone, and iPod touch	13		
From Android mobile devices	14		
From Mac computers	15		
From Windows 8 devices	16		
Use the Photo Sleeve	17		
Calibrate	18		
From iPad, iPhone, and iPod touch	18		



Supported Devices

Wireless Scanner is compatible with following devices:

- iPad (3rd generation), iPad 2, iPad, iPad mini with iOS 5.0 or later.
- iPhone 5, iPhone 4S, iPhone 4, iPod touch with iOS 5.0 or later.
- Android mobile devices (including tablets and smartphones) with OS 4.0 or later.
- Mac computers with OS X 10.7 or later.
- Windows 8 devices (including computers, tablets and smartphones).

Unpack

Make sure following items are included.



Wireless Scanner



USB Cable



Calibration Card



Cleaning Board



Cleaning Strip



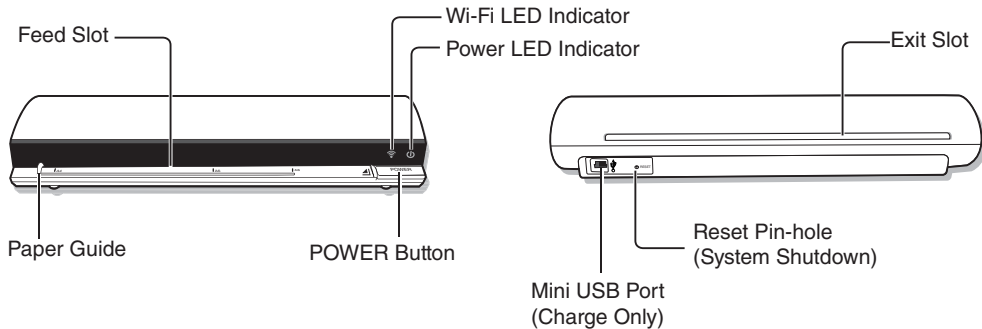
Photo Sleeve



User Guide



Scanner Parts





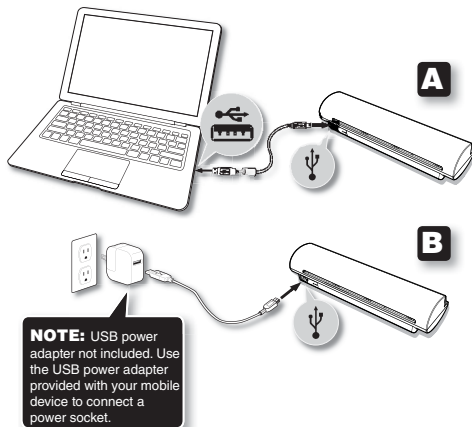
Charge the Battery

Wireless Scanner has a built-in rechargeable battery to provide power, make sure it has been fully charged before use.

1. Press POWER button to turn Off the Scanner.
* The Power LED indicator shall turn off.
2. Connect the USB cable to the Scanner at small end and to a computer (A) or to USB power adapter (B) at the other end.
* The Power LED indicator shall emit red light to indicate the battery is charging.
3. Once the battery is fully charged, the Power LED shall turn off, then disconnect the USB cable from the Scanner.

NOTES

- Charge the Scanner for approximately 4 hours or until the Power LED indicator turns off.
- When a low battery alerts (a green Power LED blinks), charge the Scanner immediately.
- **Scanner will not charge while operating.** Ensure Scanner's power is off when charging battery.
- The rechargeable battery is consumable. The battery capacity will decreased gradually.







Download and Install iScan Air

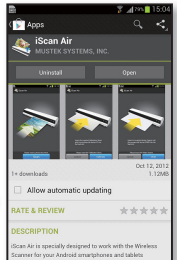
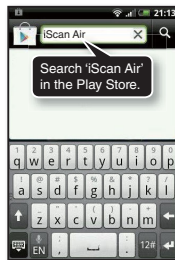
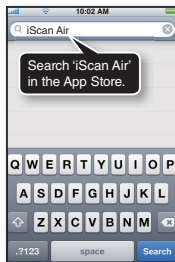
Wireless Scanner includes free iScan Air apps to work on iPad, iPhone, iPod touch, Android mobile devices, Windows 8 devices, and Mac computers. You need to download and install iScan Air from Internet on your device before use.

✓ From iPad, iPhone, and iPod touch

1. Open the  App Store from your mobile device.
2. Type 'iScan Air' in the search field.
3. Select **iScan Air** and follow on-screen instruction to download and install it to your device.

✓ From Android mobile devices


1. Open the  Play Store from your mobile device.
2. Type 'iScan Air' in the search field.
3. Select **iScan Air** and download it to your device.





Download and Install iScan Air (Continued)

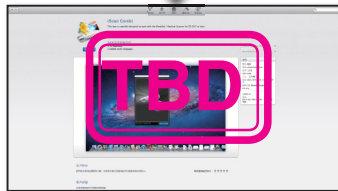
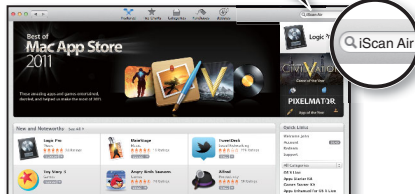
✓ From Mac computers

1. Open the  App Store from your Mac.
2. Type 'iScan Air' in the search field.
3. Select **iScan Air** and follow on-screen instruction to download and install it to Mac.

NOTES

- Ensure that your device has Internet access via your service provider or wireless connection.
- Do not perform other activities on your device while downloading **iScan Air** app.

Search 'iScan Air' in the Mac's App Store.





Download and Install iScan Air (Continued)

From Windows 8 devices

1. Open the  Windows Store from your devices.
- 2.





Connect via Wi-Fi Network

Wireless Scanner incorporates Wi-Fi capabilities with soft AP (access point) function which enables to share it to multiple devices. Follow below steps to connect Wireless Scanner to your iPad, iPhone, iPod touch, Android mobile devices, Windows 8 devices, and Mac computers via an existing Wi-Fi network in your location.

1. Press and hold **POWER** button for **2 seconds** to turn **Wireless Scanner** on.
 - * The Power LED indicator shall emit green. Wait approximately 20 seconds for Wireless Scanner to initialize, and then the Wi-Fi LED indicator shall blink blue light to indicate Wi-Fi function is enabled.
2. **Enable the Wi-Fi mode on your device**, and search for available wireless networks. Find the network name "**DIRECT-xxxxxx_iScanAir**" for Wireless Scanner.
 - * The "xxxxxx" in the network name is a 6-digit code randomly assigned for your Wireless Scanner.
3. Input 8-digit password "**12345678**" to connect to Wireless Scanner.
 - * The Wi-Fi indicator shall stop blinking and remain a steady blue light after connected.



ON - Press **POWER** 2 secs, the Power LED will emit a steady green light.
OFF - Press **POWER** 4 secs, the Power LED will turn off.



Blinking Blue LED - Wi-Fi function is enabled.
Steady Blue LED - Wireless Scanner is connected to a device.



Connect via Wi-Fi Network (Continued)

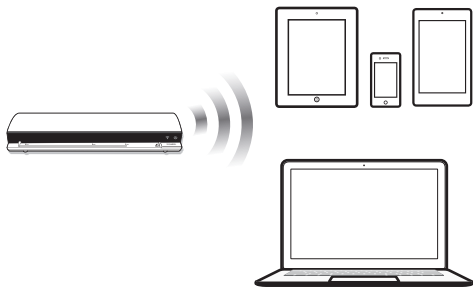
4. Now, Wireless Scanner has been connected to your device successfully and is ready for use.

NOTES

- Connection and communication errors may occur during operations due to unexpected factors. If you encounter an error, restart Wireless Scanner and reconnect it via your device again.
- The signal strength, network traffic, network environments and other conditions may affect Wireless transmission performance. If you find your Wireless Scanner is behaving abnormally we recommend that you shutdown Wireless Scanner by placing a pin into the RESET pin-hole located on the back of Wireless Scanner, and gently push until you feel a soft click. Wireless Scanner shall perform a system shutdown. Please turn it on and try your connection again.



Place a pin into the RESET pin-hole.






Scan and Save

NOTES

Ensure Wi-Fi function is enabled on Wireless Scanner and connected to your device prior to use.

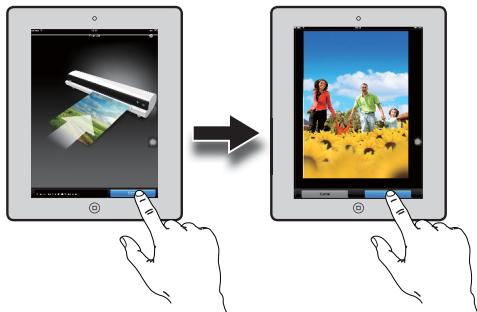
✓ From iPad, iPhone and iPod touch

1. Tap  iScan Air on your device to open it.
2. Place a photo/document facing up, adjust the Paper Guide, slightly push photo/document in until it is gripped by the rollers and pulled into the Feed Slot.
3. Tap the **Scan** button. The device's screen shall show a real-time preview while scanning.
4. Tap the **Save** button to save the scan result to the device's photo library.

* If you want to scan it again press **Cancel** button and repeat the above steps.

IMPORTANT


When using Scanner the first time with devices running on iOS 6 or later, a message 'iScan Air Would Like to Access Your Photos' shall appear after pressing **SAVE** button. You **must** tap '**OK**' in order to save image to your Photos library. If you select '**Don't Allow**', no image will be saved in your device, and you will get an Error message for next scan. **Please follow on-screen message to solve the problem by selecting [Settings > Privacy > Photos > iScan Air > "ON"](#) to allow the iScan Air to access your photos.**

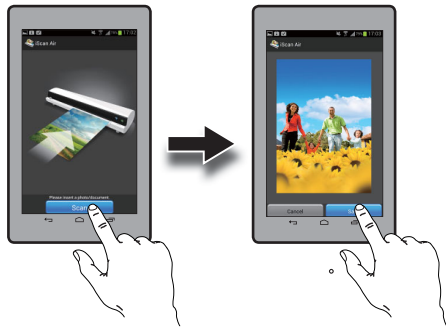




Scan and Save (Continued)

✓ From Android mobile devices


1. Tap  **iScan Air** on your device to open it.
2. Place a photo/document facing up, adjust the Paper Guide, slightly push photo/document in until it is gripped by the rollers and pulled into the Feed Slot.
3. Tap the **Scan** button. The device's shall show a real-time preview while scanning.
4. Tap the **Save** button to save the scan result to the device's gallery.
* If you want to scan it again press **Cancel** button and repeat the above steps.

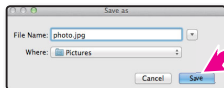




Scan and Save (Continued)

✓ From Mac computers



1. Tap  **iScan Air** on your device to open it.
 2. Place a photo/document facing up, adjust the Paper Guide, slightly push photo/document in until it is gripped by the rollers and pulled into the Feed Slot.
 3. Press the **Scan** button. The device's shall show a real-time preview while scanning.
 4. Press the **Save** button to bring up a '**Save as**' dialog box, save the scan result with a chosen file name and directory, or press the **Export to iPhoto** to export it to the iPhoto.
- * If you want to scan it again press **Cancel** button and repeat the above steps.





Scan and Save (Continued)

From Windows 8 devices

1. Press  on your device to open it.
 2. Place a photo/document facing up, adjust the Paper Guide, slightly push photo/document in until it is gripped by the rollers and pulled into the Feed Slot.
 3. Tap the **Scan** button. The device's shall show a real-time preview while scanning.
 4. Tap the **Save** button to save the scan result to the device's gallery.

- * If you want to scan it again press **Cancel** button and repeat the above steps.





Use the Photo Sleeve

Use the Photo Sleeve when photos are fragile or small to avoid damage or jams, and get the best result.

1. Remove the plastic foil on the Sleeve, place the photo inside of it, insert the tongue into the slot at the open end.
2. Insert the sealed end of the Sleeve facing up into the Feed Slot, adjust the Paper Guide, then follow the '**Scan and Save**' procedures to start scanning to a device.





If dark lines or stripes appeared on the scanned image, please perform the calibration of Wireless Scanner.

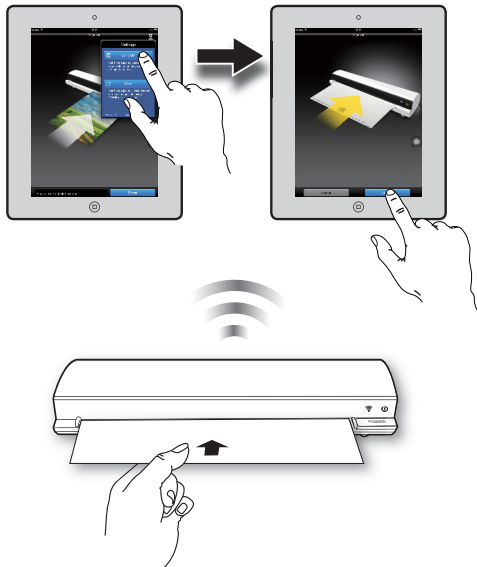
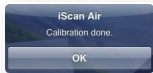
NOTES

- To get the best scan quality, perform the calibration periodically.
- Make sure the Calibration Card is clean and free of dust before use.

From iPad, iPhone and iPod touch



1. Tap  **iScan Air** app. Tap the  (Settings) at the top-right corner of the app to bring up the menu, then select the **Calibrate** setting.
2. Remove the plastic foil on the Calibration Card, insert it in the Feed Slot with the arrow marking facing up and pointing to the Scanner.
3. Tap the **Calibrate** button.

- * The Calibration Card will be automatically pulled into Wireless Scanner, wait until the Card is ejected with a 'Calibration done.' message. Tap the **OK** button.





✓ From Android mobile devices

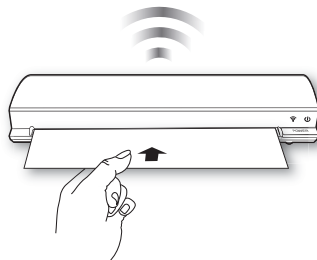
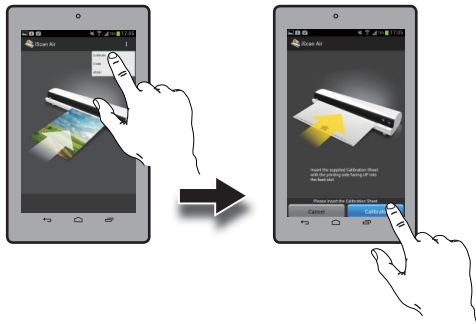
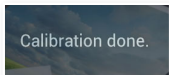
1. Tap  **iScan Air** app. Tap the  (Settings) at the top-right corner of the app to bring up the menu, then select the **Calibrate** setting.

* If your Android device has a 'Menu' button press it to bring up the menu.


2. Remove the plastic foil on the Calibration Card, insert it in the Feed Slot with the arrow mark facing up and pointing to Wireless Scanner.

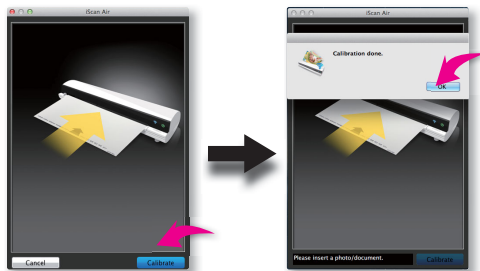
3. Tap the **Calibrate** button.

* The Calibration Card will be automatically pulled into Wireless Scanner, wait until the Card is ejected with a 'Calibration done.' message.




✓ From Mac computers

1. Press  iScan Air app. Press the **Settings** at the top-left corner of the Mac's screen, select the **Calibrate** setting.
2. Remove the plastic foil on the Calibration Card, insert it in the Feed Slot with the arrow mark facing up and pointing to Wireless Scanner.
3. Tap the **Calibrate** button.
 - * The Calibration Card will be automatically pulled into Wireless Scanner, wait until the Card is ejected with a 'Calibration done.' message. Tap the **OK** button.





From Windows 8 devices

1. Press  on your device to open it.
2. Press the XXX on the device. Tap XXX at the top-right corner of the app to bring up the menu, and then select the **Calibrate** setting.
3. Remove the plastic cover of the Calibration Card, insert it in the Feed Slot with the arrow mark facing up and pointing to Wireless Scanner.
4. Tap the **Calibrate** button.

* The Calibration Card will be automatically pulled into Wireless Scanner, wait until the Card is ejected.







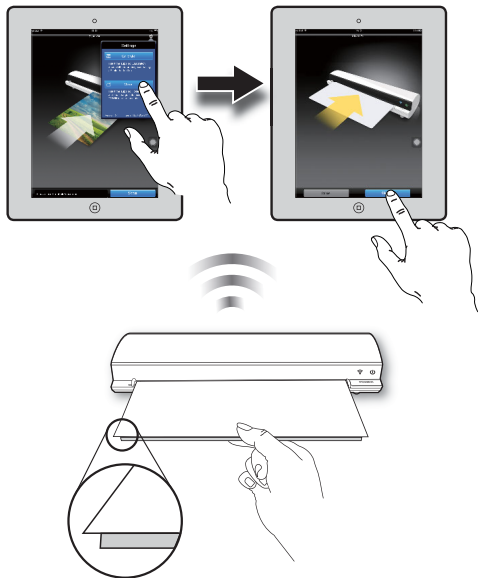
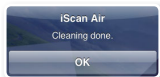
Clean Rollers

Dirt and dust can build up inside Wireless Scanner and affect image quality, please clean Wireless Scanner periodically to get the best result. Use the Cleaning Board included with Wireless Scanner to clean rollers.

✓ From iPad, iPhone and iPod touch

1. Tap  **iScan Air** app. Tap the  (Settings) at the top-right corner of the app to bring up the menu, then select the **Clean** setting.
2. Hold the Cleaning Board with the sponge stopper strip facing down towards you.
3. Tap the **Clean** button.



* The Cleaning Board will be automatically pulled into Wireless Scanner, wait until the Board is ejected with a 'Cleaning done.' message. Tap the **OK** button.

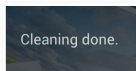




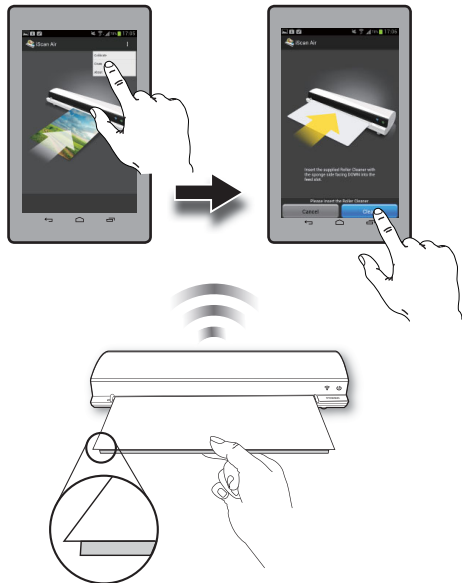
Clean Rollers (Continued)

☑ From Android mobile devices


1. Tap  iScan Air app. Tap the  (Settings) at the top-right corner of the app to bring up the menu, then select the **Clean** setting.
 - * If your Android device has a 'Menu' button press it to bring up the menu.
2. Hold the Cleaning Board with the sponge stopper strip facing down towards you.
3. Tap the **Clean** button.
 - * The Cleaning Board will be automatically pulled into Wireless Scanner, wait until the Board is ejected with a 'Cleaning done' message.



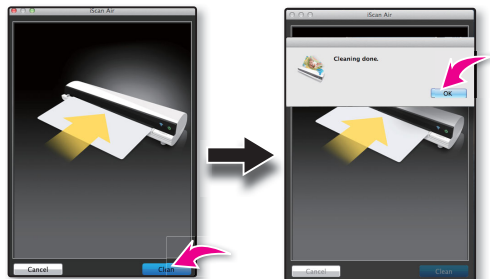
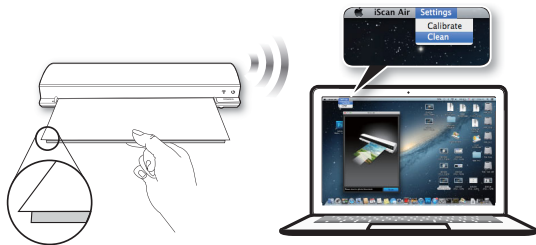
Cleaning done.



From Mac computers

1. Press  iScan Air app. Tap the Settings at the top-left corner of the device's screen, select the **Clean** setting.
2. Hold the Cleaning Board with the sponge stopper strip facing down towards you.
3. Tap the **Clean** button.


* The Cleaning Board will be automatically pulled into Wireless Scanner, wait until the Board is ejected with a 'Cleaning done.' message. Tap the **OK** button.





Clean Rollers (Continued)

From Windows 8 devices

1. Press  on your device to open it.
2. Press the XXX on the device. Tap XXX at the top-right corner of the app to bring up the menu, and then select the **Clean** setting.
3. Hold the Cleaning Board with the sponge stopper strip facing down towards you.
4. Tap the **Clean** button.

* The Cleaning Board will be automatically pulled into Wireless Scanner, wait until the Board is ejected with a success message.

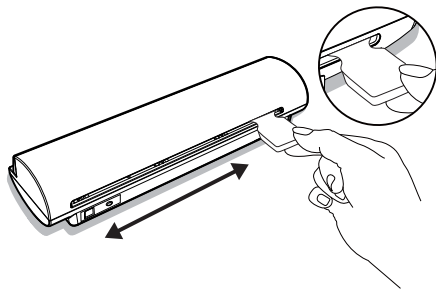




Clean Lens

Dirt and dust can build up inside Wireless Scanner and affect image quality, please clean Wireless Scanner periodically to get the best result. Please use the Cleaning Strip included with Wireless Scanner to clean the lens.

1. Turn off Wireless Scanner.
2. Hold the Cleaning Strip with the sponge grip handle facing down.
3. Insert the thinner end into the Exit Slot at the rear of Wireless Scanner.
4. Move the Strip from side to side few times, then remove it.





Helpful Hints

Scanner does not turn on.

- Check if the POWER button is pressed on.
- Check if Wireless Scanner is charged.

Scanner cannot connect to a mobile device or computer.

- Check if the Wi-Fi signal strength is sufficient. Try moving closer to the Wi-Fi router or base station.
- Make sure the Wi-Fi LED indicator of Wireless Scanner is flashing blue.
- Check that the network settings on your device is matched to Wireless Scanner.
- Check if Wireless Scanner is being used by another user, please wait and try again later.

No output from Scanner.

- Check if the Wi-Fi connection is disconnected. Re-connect it and try again.
- Check if connection and/or communication errors occurred while scanning. Restart your Scanner and re-connect it.
- Reset Wireless Scanner, then turn power back on and try again.

Scanner behaves abnormally

- Place a pin into the RESET pin-hole located on the back of the Scanner to shutdown system, then restart the Scanner.

Cannot save scan results to a mobile device or computer.

- Check if the storage memory of the device or computer is full.
- Check if Wireless Scanner and the mobile device has a low power. Charge them to a full power capacity.

Scan result is poor.

- Calibrate and clean Wireless Scanner when the scan result is poor.
- Do not use the Photo Sleeve when the photo is laminated.

Cannot feed the paper.

- Make sure the photo/document is gripped and slightly pulled into the feed slot prior to scanning.
- Remove the photo/document from the feed slot and insert it again.
- Check if the paper thickness is exceeded the limit. Acceptable paper thickness is 0.08mm ~ 0.6mm.
- Do not scan more than one page at a time; otherwise the extra pages may not feed properly.

FCC Notices

This device complies with Part 15 of the FCC Rules. Operation is subject to the following two conditions: (1) this device may not cause harmful interference, and (2) this device must accept any interference received, including interference that may cause undesired operation.

CAUTION: Change or modification not expressly approved by the party responsible for compliance could void the user's authority to operate this equipment.

This equipment has been tested and found to comply with the limits for a Class B digital device, pursuant to Part 15 of the FCC Rules. These limits are designed to provide reasonable protection against harmful interference in a residential installation. This equipment generates, uses and can radiate radio frequency energy and, if not installed and used in accordance with the instructions, may cause harmful interference to radio communications. However, there is no guarantee that interference will not occur in a particular installation. If this equipment does cause harmful interference to radio or television reception, which can be determined by turning the equipment off and on, the user is encouraged to try to correct the interference by one or more of the following measures:

- Reorient or relocate the receiving antenna.
- Increase the separation between the equipment and receiver.
- Connect the equipment into an outlet on a circuit different from that to which the receiver is connected.
- Consult the dealer or an experienced radio/TV technician for help.

CAUTION:

Any changes or modifications not expressly approved by the grantee of this device could void the user's authority to operate the equipment.

RF exposure warning

This equipment must be installed and operated in accordance with provided instructions and the antenna(s) used for this transmitter must be installed to provide a separation distance of at least 20 cm from all persons and must not be co-located or operating in conjunction with any other antenna or transmitter. End-users and installers must be provide with antenna installation instructions and transmitter operating conditions for satisfying RF exposure compliance."



Specifications

Scanner Type	A4 color sheetfed scanner	
Image Sensor	Color CIS (Contact Image Sensor)	
Light Source	LED (R, G, B)	
Scan Size (Max.)	W 216mm x L 356 mm (W 8.5" x L 14")	
Scan Thickness	0.08mm ~ 0.6mm	
Scan Resolution	300 dpi	
Scan Speed	12 seconds per page (A4 color) at 300 dpi	
Interface	USB mini-B port (charge only); Reset pin-hole (system shutdown)	
File Format	JPEG	
Power	5Vdc	
Power Consumption	4.2W (Max.)	
Battery	Lithium polymer battery 1500mAh (built-in)	
Battery Capacity	Approx. 1.5 hours of continuous use after fully charged.	
Scans per Charge	Approx. 300 pages of continuous use after fully charged.	
Power Saving	Auto power off in 5 minutes when not in use.	
Charge Time	Approx. 4 hours.	
Wi-Fi Capability	Radio Frequency	2.4GHz~2.472GHz compliant 802.11g/n protocol
	Configuration	Soft AP (access point) supported
	Security	WPA2
Dimensions	273 x 70 x 50 mm (10.6" x 2.8" x 2") (W x D x H)	
Weight	574g (1.27lbs)	
Operating Conditions	5°C ~ 35°C (41°F ~ 95°F), humidity range 35% ~ 80% RH; Non-condensing	