

FCC Compliance Statement

This equipment has been tested and found to comply with limits for a Class B digital device, pursuant to Part 15 of the FCC rules. These limits are designed to provide reasonable protection against harmful interference in residential installations. This equipment generates, uses, and can radiate radio frequency energy, and if not installed and used in accordance with the instructions, may cause harmful interference to radio communications. However, there is no guarantee that interference will not occur in a particular installation. If this equipment does cause interference to radio or television equipment reception, which can be determined by turning the equipment off and on, the user is encouraged to try to correct the interference by one or more of the following measures:

- Reorient or relocate the receiving antenna
- Move the equipment away from the receiver
- Plug the equipment into an outlet on a circuit different from that to which the receiver is connected
- Consult the dealer or an experienced radio/television technician for additional suggestions

Only equipment certified to comply with Class B should be attached to this equipment to continuing compliance with FCC emission limit, and must have shielded interface cables.

You are cautioned that any change or modifications to the equipment not expressly approved by the party responsible for compliance could void your authority to operate such equipment.

A3 II T Transparency Adapter Installation Guide



1

Unpacking the Transparency Adapter

Unpack the package and inspect the items closely to make sure no item is damaged.

The package should include:

- Transparency Adapter
- Power Supply Adapter
- Manual
- Installation CD

2

Installing the Transparency Adapter

1. Remove the Scanner's Cover.
2. Remove the protective film from the Transparency Adapter glass.
3. Insert the Transparency Adapter hinge posts into the scanner's hinge slots.
4. Connect the Power Adapter to the Transparency Adapter, and plug it into an appropriate power outlet.
5. Turn the transparency adapter power on.
6. Install the Driver by referring to the next section.



Power Switch

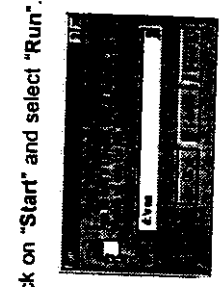
Power Adapter

Hardware installation is complete

3

Driver Installation

1. Insert the Driver Installation Disk into your disk drive.



2. Click on "Start" and select "Run".

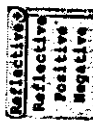
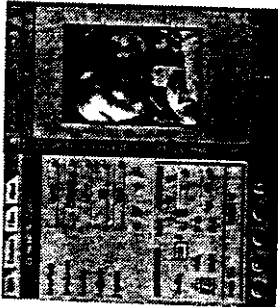
3. In the "Run" dialog box, type "drive:\run" where drive is your floppy disk drive and click "OK."

4. Follow all on-screen instructions.

4 Using the Transparency Adapter

Use the transparency adapter the same way you would normally when scanning. Just remember to select the proper Scan Source.

- Open an image editing application, and acquire the TWAIN interface as you normally do.
- Place your image (slide, film, negative etc.) on the scanner.



- Click **Scan Source** and select the appropriate transparency type (Positive or Negative).
- Select the desired **Scan Mode** and **Resolution**.
- Click **Scan**.

The scan appears on the screen of your image editing software.

5 Specifications

Scan Area	25.4cm x 35.6 cm (10" x 14")
Brightness	2300 cd/m ²
Uniformity	90%
Power Consumption	15 Watt (15V, 1A)
Operating Temperature	5°C ~ 40°C (40°F ~ 104°F)
Operating Humidity	20% ~ 80% RH
Storage Temperature	-20°C ~ 60°C (-4°F ~ 150°F), Gradient: 20°C (68°F) per hour
Storage Humidity	10°C ~ 90°C (50°F ~ 194°F), Gradient: 20°C (68°F) per hour
Lamp Type	Cold Cathode Fluorescent
Lamp Life	10,000 hours
Lamp Voltage	1300 ~ 1400 Vrms
Dimensions	554 x 360 x 40 mm 21.8 x 14.2 x 1.6 inches (L x W x H)
Weight	2.8 Kg (6.2 Lbs.)